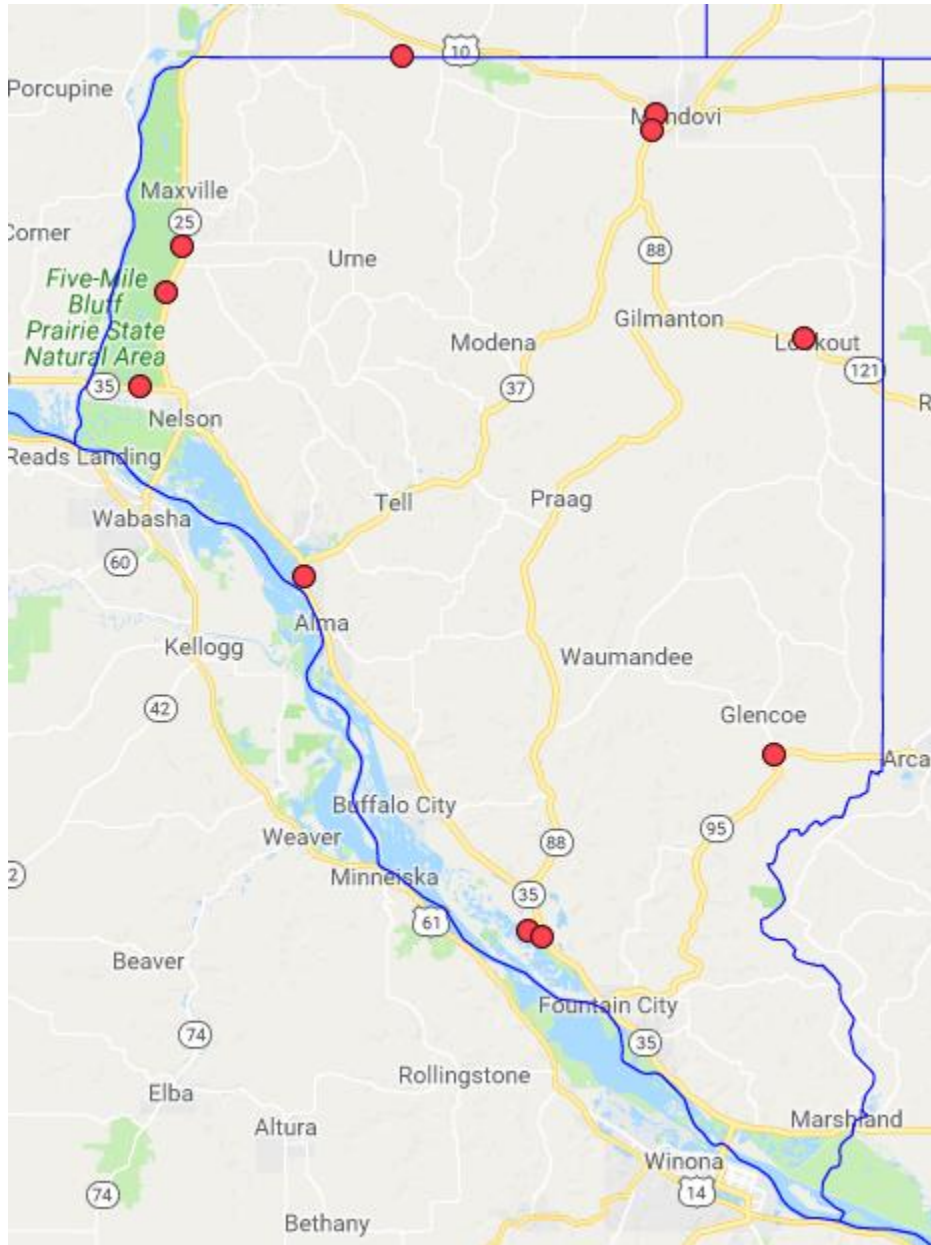


# ANATOMY OF BUFFALO COUNTY: A TRAFFIC SAFETY SUMMARY



There were 11 fatal crashes in Buffalo County from 2012 to 2016.

## **THE PLACE**

### *Section Summary*

Incorporated municipalities in Buffalo County are along the Mississippi River and STH 35, except for Mondovi. It is the top county in the state for miles of county highways per capita. It is the top ten counties for miles of state highways per VMT and per capita. It is in the bottom ten counties for total miles of highway, miles of local roads, and for number of registered vehicles. The entire county is rural.

### *Urbanization*

Buffalo County is adjacent to the Eau Claire and Rochester metropolitan areas. The entire county is rural.<sup>1</sup> The western boundary of the county is the Mississippi River, along which is Merrick State Park and a portion of Trempealeau National Wildlife Refuge. Other significant natural features include the Chippewa, Buffalo, and Trempealeau Rivers.

### *Road Network*

U.S. Highway (USH) 10 runs east to west through the northern part of the county, running through Mondovi. To the east, the highway carries traffic to and from Eleva, Strum, Osseo, and I-94. To the west, USH 10 carries traffic to and from Durand and Ellsworth.

State Trunk Highway (STH) 25 runs north to south along the western part of the county through Nelson. To the north, STH 25 carries traffic to and from Durand and Menomonie. To the south, STH 25 carries traffic to Wabasha, Minnesota, where the highway is signed as Minnesota State Highway 60. STH 35 runs along the Mississippi River and is a portion of the Great River Road National Scenic Byway. STH 35 is designated as a north-south highway, and it travels through Nelson, Alma, Cochrane, and Fountain City. Buffalo City is adjacent to Cochrane, and is connected to STH 35 via County Trunk Highway (CTH) OO. To the southeast, STH 35 carries traffic to and from Trempealeau, Holmen, and La Crosse. To the northwest, STH 35 heads toward Pepin and Prescott. STH 54 is an east-west highway that is co-signed with STH 35 as it enters from the east from Trempealeau County. In the town of Buffalo, STH 54 diverges from STH 35 and crosses the Mississippi River heading into Winona, Minnesota, where the highway is signed as Minnesota State Highway 43.

STH 37 is a north-south highway that begins in Alma and heads northeast along the Buffalo River to Mondovi. In Mondovi, STH 37 has a short concurrency with USH 10, and then it heads northeast, carrying traffic to and from La Crosse. STH 88 begins at STH 35 in the community of Czechville and heads north through rural Buffalo County, ending at STH 37 in the town of Mondovi. STH 121 begins at STH 88 in the community of Gilmanton and heads east toward Independence and Whitehall. STH 95 is an east-west highway that begins at STH 35 in Fountain City and heads northeast toward Arcadia.

---

<sup>1</sup> United States Census Bureau. "Percent urban and rural in 2010 by state and county." Accessed Sept. 29, 2017. <https://www.census.gov/geo/reference/ua/urban-rural-2010.html>

### *Miles of Roadway*

There are 1,042 miles of roadway in the county, including 148 (14.2%) miles of state roads, 318 (30.5%) miles of county roads, 573 (55.0%) miles of local roads, and three miles of roads of another type.<sup>2</sup>

### *Vehicle Registrations and Vehicle Miles of Travel (VMT)*

In 2016, there were 5,445 autos, 1,087 cycles, 1,929 trailers, and 9,796 trucks registered in Buffalo County.<sup>3</sup> VMT in 2016 was 211,184,620.<sup>4</sup>

### *Traffic Volume*

As can be seen, traffic volumes in the county are highest along the intersection of Highways 37 and 10, near the community of Mondovi, along the Great River Road near Nelson, and along the Great River Road in the southern portion of the county (near Winona).

---

<sup>2</sup> Wisconsin Department of Transportation. "County Maps." Accessed Sept. 29, 2017. <http://wisconsindot.gov/Pages/travel/road/hwy-maps/county-maps/default.aspx>

<sup>3</sup> Wisconsin Department of Transportation. "Facts and Figures 2016, Vehicles Registered by County." Accessed Nov. 6, 2017. <http://wisconsindot.gov/Documents/about-wisdot/newsroom/statistics/factsfig/vehregcounty.pdf>

<sup>4</sup> Wisconsin Department of Transportation. "2016 Vehicles Miles of Travel (VMT) by County." Accessed Nov. 6, 2017. <http://wisconsindot.gov/Documents/projects/data-plan/veh-miles/vmt2016-c.pdf>

**FIGURE 1:**

**TRAFFIC VOLUME ON THE STATE TRUNK NETWORK  
BUFFALO COUNTY, WI**



**Miles**  
0 5 10

Map produced by Evan Mooman  
Bureau of Transportation Safety (BOTS)  
Data from the Wisconsin DOT wbasemaps  
from ESRI (2017)

**Traffic Volume (Measured in  
Daily Vehicle-Miles Traveled)**

- 0 - 1836
- 1837 - 3306
- 3307 - 4956
- 4957 - 6850
- 6851 - 9812
- 9813 - 26794

### Commuting Flows

As seen below in Figure 2, the majority of workers who reside in Buffalo County also work in Buffalo County, and vice versa.

**FIGURE 2: COMMUTING FLOWS AMONG COUNTIES**

Workers who Reside in Buffalo County Work in:		People who Work in Buffalo County Reside in:	
Buffalo County	3,113	Buffalo County	3,113
Winona County, MN	1,269	Eau Claire County	295
Trempealeau County	834	Pepin County	203
Eau Claire County	618	Trempealeau County	179
Pepin County	271	Winona County, MN	126
Wabasha County, MN	256	Wabasha County, MN	60
La Crosse County	70	Dunn County	60
Dunn County	68		
Chippewa County	49		
Olmsted County, MN	39		
Pierce County	32		
Dakota County, MN	27		
Others	152	Others	450

5

As seen below in Figure 3, the most common commuting flow between two different municipalities is between residences in Buffalo City and workplaces in Winona, Minnesota.

**FIGURE 3: COMMUTING FLOWS BETWEEN MUNICIPALITIES (TOP 15)**

Residence	Place of Work	Number
Buffalo City	Winona, Minnesota	228
Buffalo (Town)	Winona, Minnesota	224
Mondovi	Eau Claire	224
Fountain City	Winona, Minnesota	206
Milton (Town)	Winona, Minnesota	145
Naples (Town)	Mondovi	112
Mondovi (Town)	Mondovi	94
Cross (Town)	Winona, Minnesota	90
Glencoe (Town)	Arcadia	86
Cochrane	Winona, Minnesota	84
Naples (Town)	Eau Claire	70
Eau Claire	Mondovi	68
Mondovi	Whitehall	57
Glencoe (Town)	Whitehall	55
Albany (Town), Pepin Co.	Mondovi	53

6

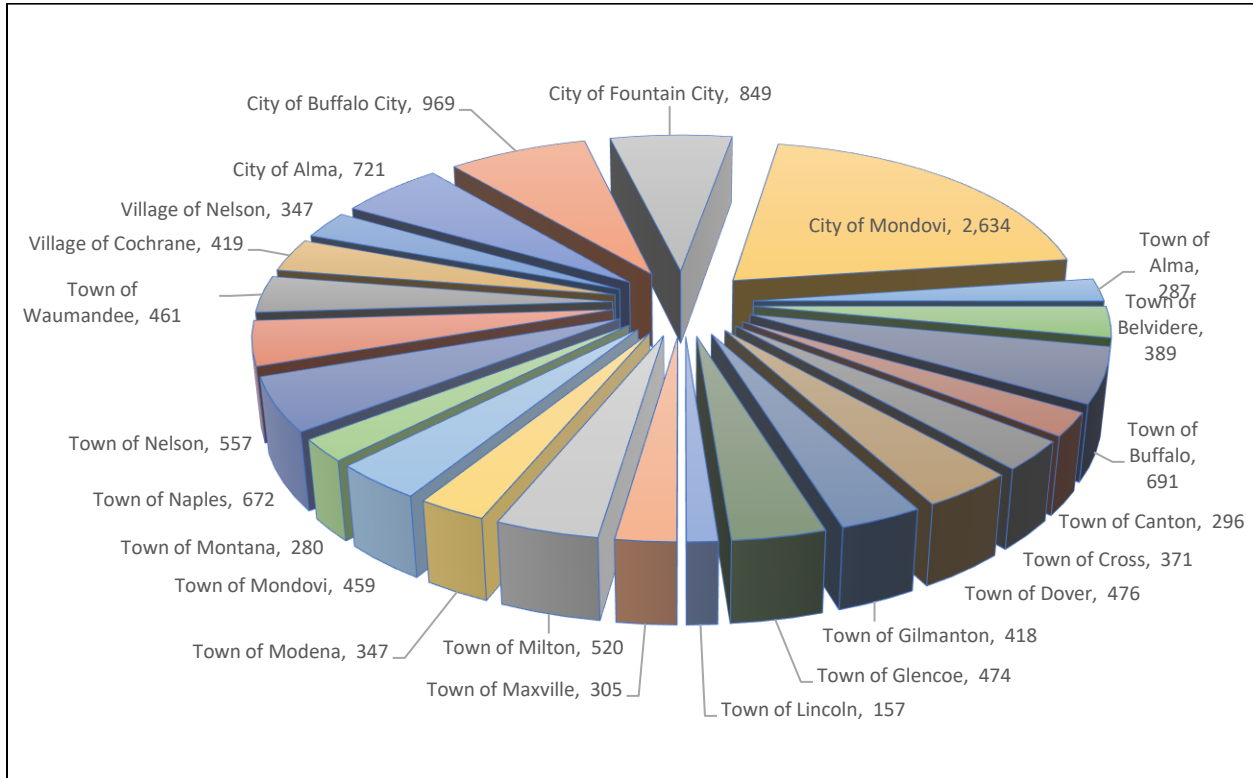
<sup>5</sup>United States Census Bureau. 2009-2013 5-Year American Community Survey Commuting Flows. <https://www.census.gov/data/tables/time-series/demo/commuting/commuting-flows.html> Accessed Sept. 29, 2017.

<sup>6</sup>United States Census Bureau. 2009-2013 5-Year American Community Survey Commuting Flows. <https://www.census.gov/data/tables/time-series/demo/commuting/commuting-flows.html> Accessed Oct. 5, 2017.

## **THE POPULATION**

The population of Buffalo County—about 13,000 individuals—is highly dispersed through 23 jurisdictions (the largest city in the county, the city of Mondovi, comprises a mere 20% of the county’s population).

**FIGURE 4: POPULATION OF BUFFALO COUNTY MUNICIPALITIES (2016)**



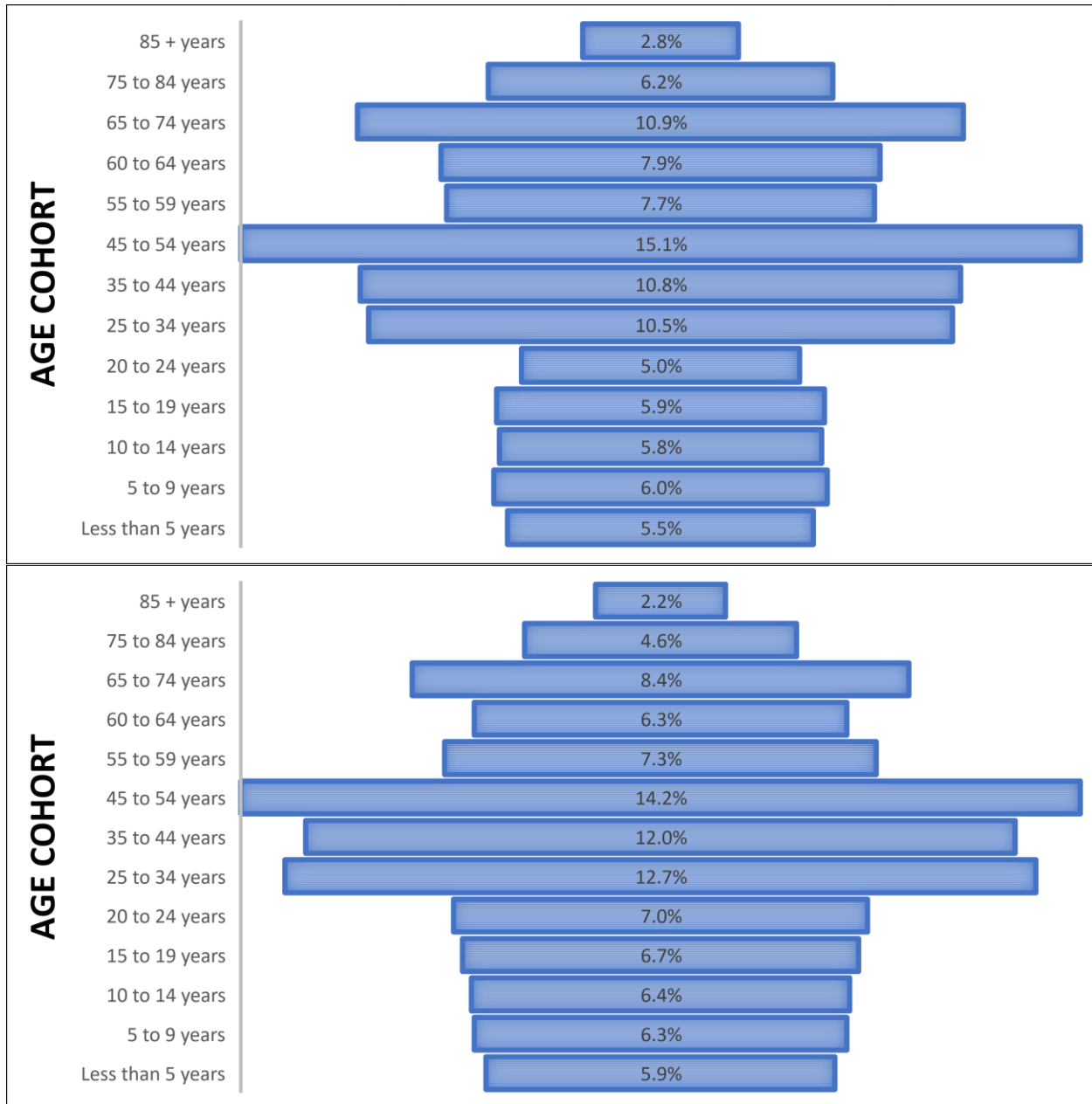
7

### *Population Trends*

Between 2010 and 2016, the county’s population decreased considerably (by about 3.8%). Overall, the population of Buffalo County is somewhat older than the state (the median age of the county is 45.4 while the comparable figure for the state is 39). In comparison to the state, the county is home to a somewhat lower percentage of children and teenagers and a higher percentage of elderly individuals.

<sup>7</sup> United States Census Bureau. “Selected Economic Characteristics DP03, Employment Status.” 2012-2016 American Community Survey 5-Year Estimates. [https://factfinder.census.gov/faces/tableservices/jsf/pages/productview.xhtml?pid=ACS\\_15\\_5YR\\_DP03&src=pt](https://factfinder.census.gov/faces/tableservices/jsf/pages/productview.xhtml?pid=ACS_15_5YR_DP03&src=pt) Accessed November 4th, 2017.

**FIGURE 5<sup>8</sup>: POPULATION PYRAMIDS (BUFFALO COUNTY ABOVE AND STATE BELOW)**



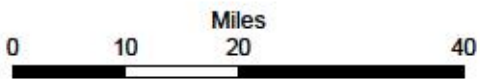
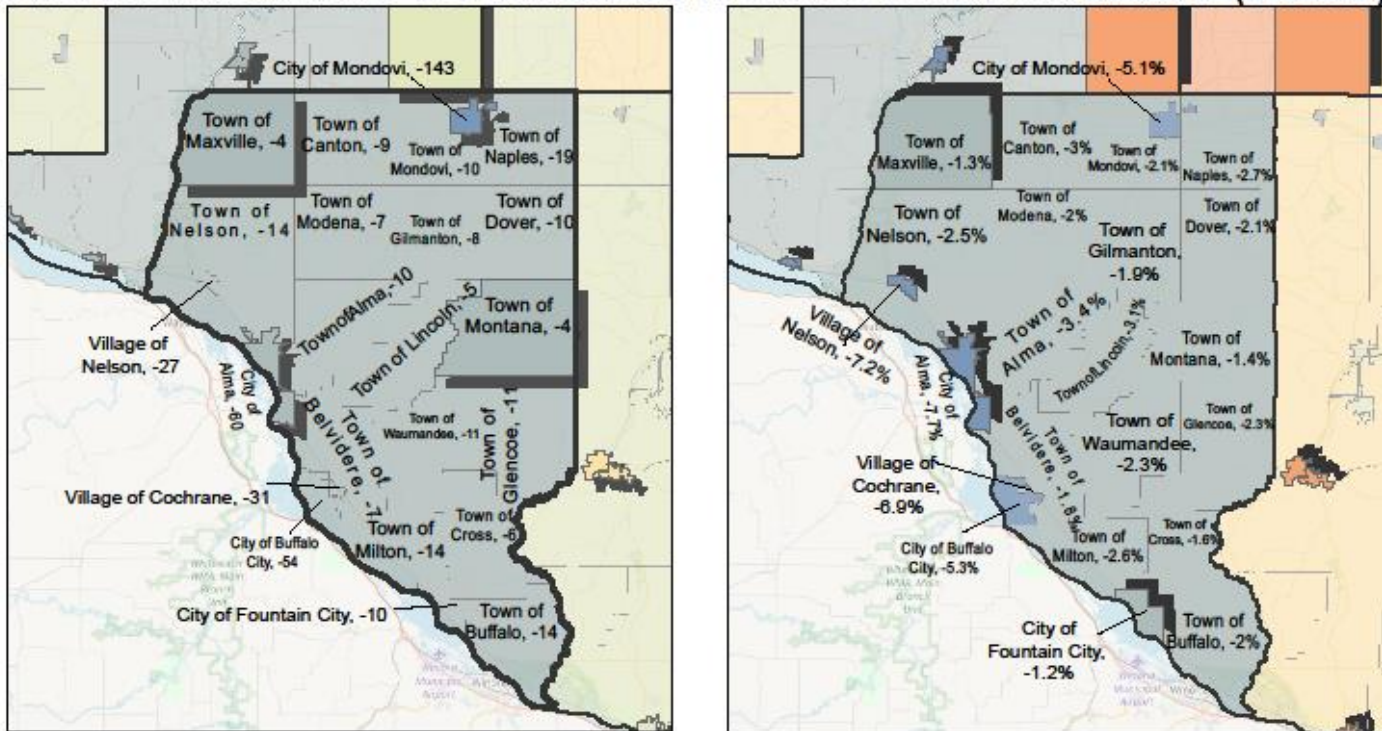
With only a few exceptions, most jurisdictions in the county are losing population, with most places experiencing relative decreases of between 2 and 5% (in the images, the measure of absolute population change merely shows the raw population changes between 2010 and 2016, while the measure of relative population change weights such absolute changes by the base population figures of 2010).<sup>9</sup> No clear geographical pattern emerges regarding population change, with population decline spread fairly evenly throughout the county.

<sup>8</sup> United States Census Bureau. "Selected Economic Characteristics DP03, Employment Status." 2012-2016 American Community Survey 5-Year Estimates. [https://factfinder.census.gov/faces/tableservices/jsf/pages/productview.xhtml?pid=ACS\\_15\\_5YR\\_DP03&src=pt](https://factfinder.census.gov/faces/tableservices/jsf/pages/productview.xhtml?pid=ACS_15_5YR_DP03&src=pt) Accessed November 6th, 2017.

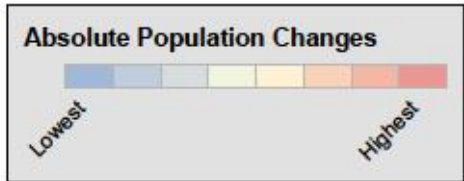
<sup>9</sup> The highlighted jurisdiction in the image shows the two jurisdictions that are growing fastest and the two jurisdictions growing the slowest.

FIGURE 6:

**ABSOLUTE AND RELATIVE POPULATION CHANGES BUFFALO COUNTY MUNICIPALITIES (2010-2016)**



Produced by E. Moorman, Bureau of Transportation Safety and the Division of State Patrol, Data from ESRI and the US Census Bureau, 2016

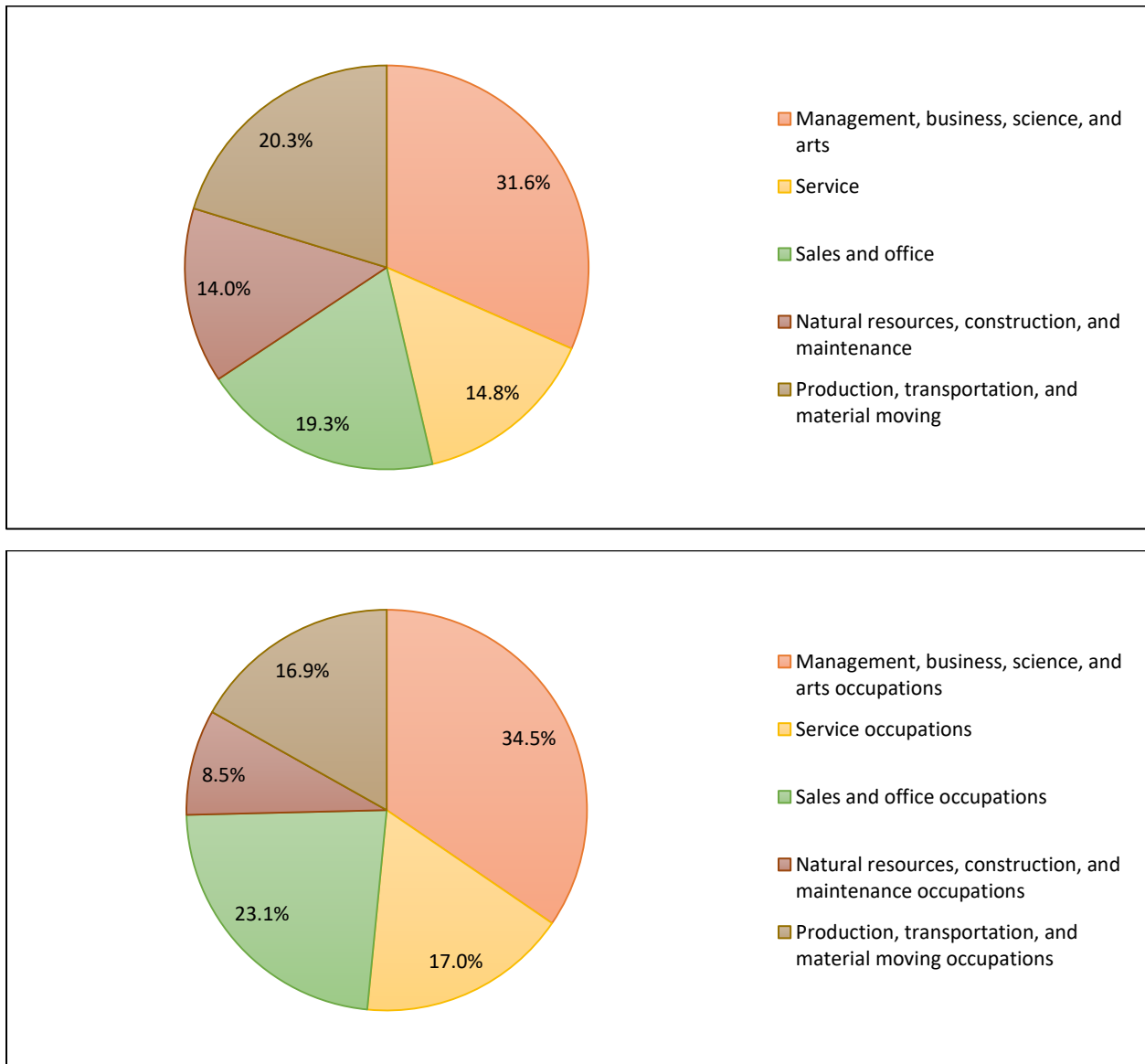


## THE ECONOMY

### Section Summary

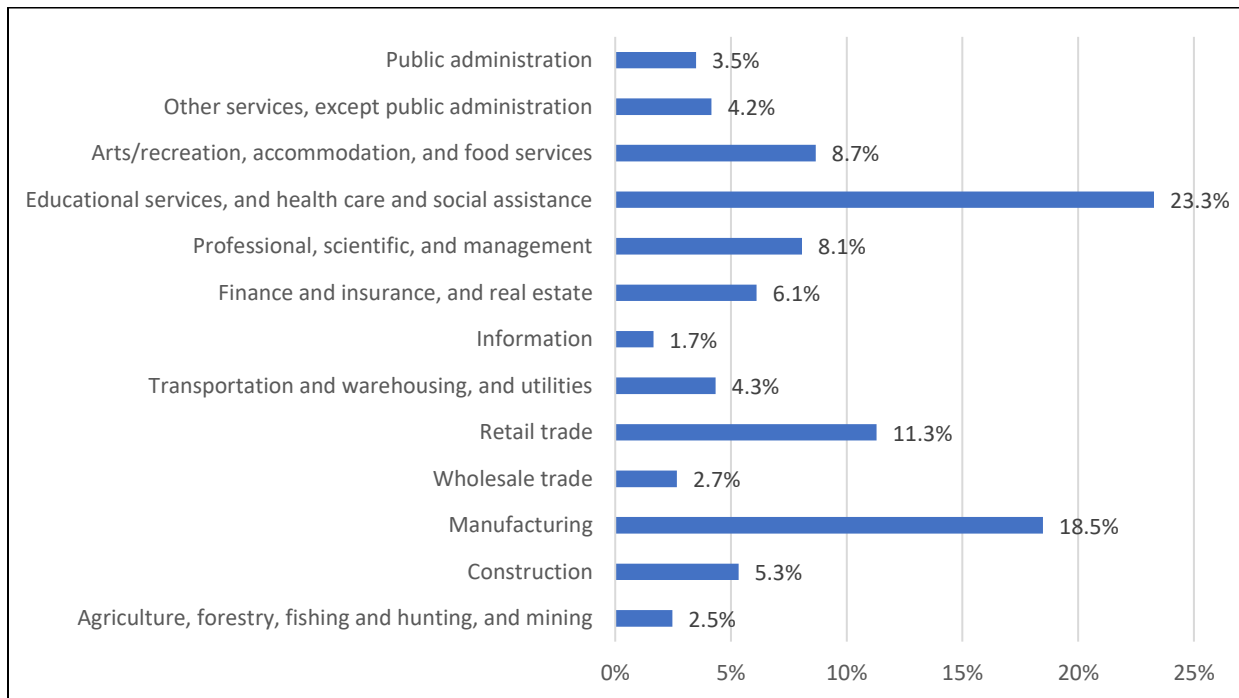
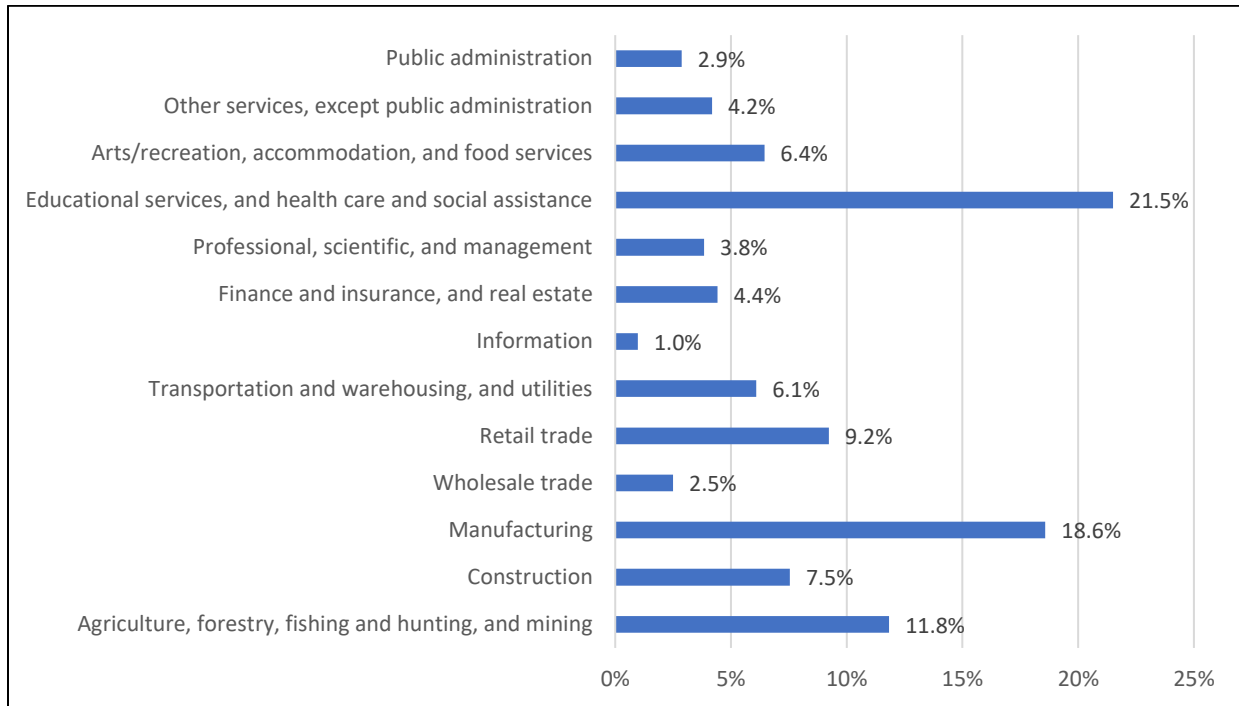
The unemployment rate in Buffalo County has been, on average, 0.5% lower than that of the state over the last decade. Generally, the county has a comparatively high number of jobs in natural resources, construction, or maintenance. The proportion of the population that works in the professional, scientific, or management industries is fairly small, while the more people work in the construction industry or the agriculture, forestry, fishing and hunting, or mining industries.

**FIGURE 7: EMPLOYMENT BY OCCUPATION (BUFFALO ON TOP AND THE STATE BELOW)** <sup>10</sup>



<sup>10</sup> United States Census Bureau. "Selected Economic Characteristics DP03, Employment Status." 2011-2015 American Community Survey 5-Year Estimates. [https://factfinder.census.gov/faces/tableservices/jsf/pages/productview.xhtml?pid=ACS\\_15\\_5YR\\_DP03&src=pt](https://factfinder.census.gov/faces/tableservices/jsf/pages/productview.xhtml?pid=ACS_15_5YR_DP03&src=pt) Accessed September 29, 2017.

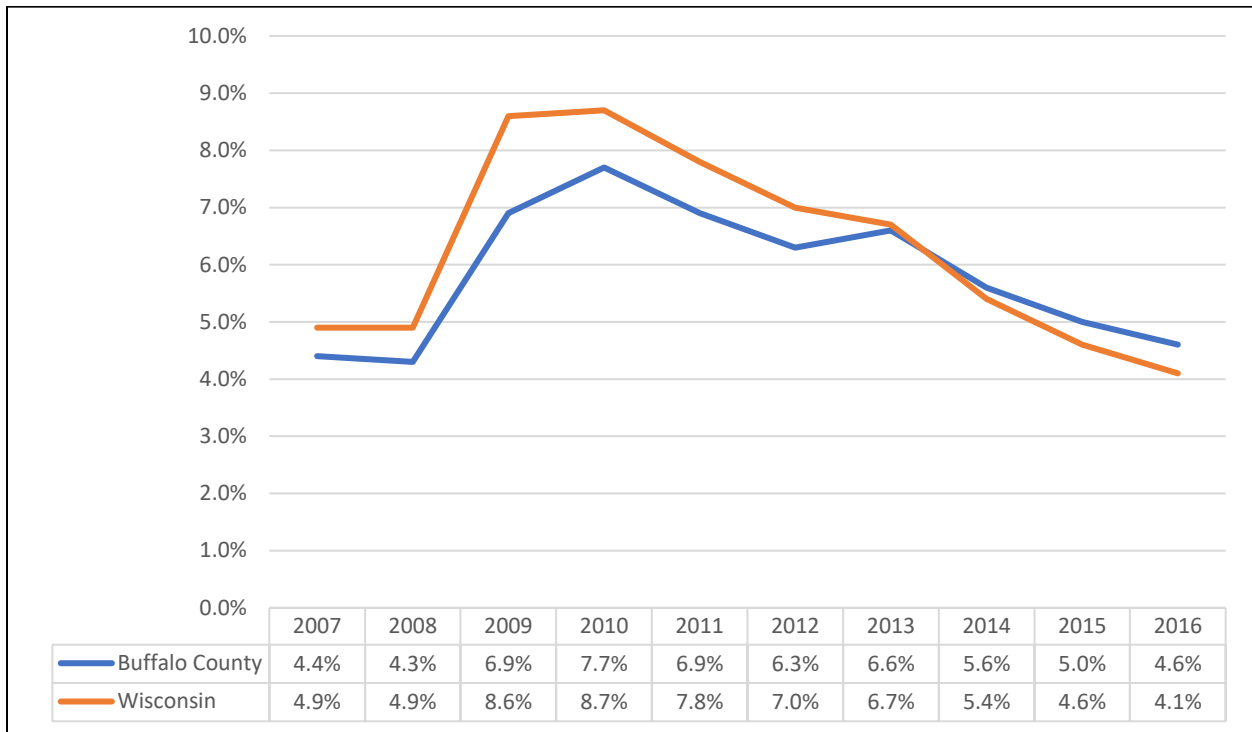
**FIGURE 8: EMPLOYED POPULATION BY INDUSTRY (BUFFALO ON TOP AND STATE BELOW)**



11

<sup>11</sup> United States Census Bureau. "Selected Economic Characteristics DP03, Employment Status." 2011-2015 American Community Survey 5-Year Estimates. [https://factfinder.census.gov/faces/tableservices/jsf/pages/productview.xhtml?pid=ACS\\_15\\_5YR\\_DP03&src=pt](https://factfinder.census.gov/faces/tableservices/jsf/pages/productview.xhtml?pid=ACS_15_5YR_DP03&src=pt) Accessed September 29, 2017.

**FIGURE 9: UNEMPLOYMENT RATES, BUFFALO COUNTY AND WISCONSIN, 2007-2016**



12

<sup>12</sup> United States Department of Labor, Bureau of Labor Statistics. Local Area Unemployment Statistics. "Labor Force Data by County," annual averages. <https://www.bls.gov/lau/#tables> Accessed Sept. 29, 2017.

**ALCOHOL RISK FACTORS**

*Section Summary*

Sixty-six percent of licensees have liquor for sale for consumption on site. Seventeen percent of licenses are in Alma, 15% are in Mondovi, 9% are in Cochrane, 9% are in Fountain City, 9% are in Nelson, and 38% are in towns.

**FIGURE 10: ALCOHOL BEVERAGE LICENSES BY JURISDICTION, BUFFALO COUNTY**

	Alma	Buffalo City	Cochrane	Fountain City	Mondovi	Nelson	Towns	Total (By Liq. License)
AB or AC					2	1	1	4
AL or ALB	3	1	1	1	4	3	2	15
BB or CW	2		2	2	1		5	12
BL or BLB	11	2	5	5	7	4	27	61
Others								0
<b>Total (By Municipality)</b>	<b>16</b>	<b>3</b>	<b>8</b>	<b>8</b>	<b>14</b>	<b>8</b>	<b>35</b>	<b>92</b>

13

Establishments within a municipality but outside the county are not included in the table.

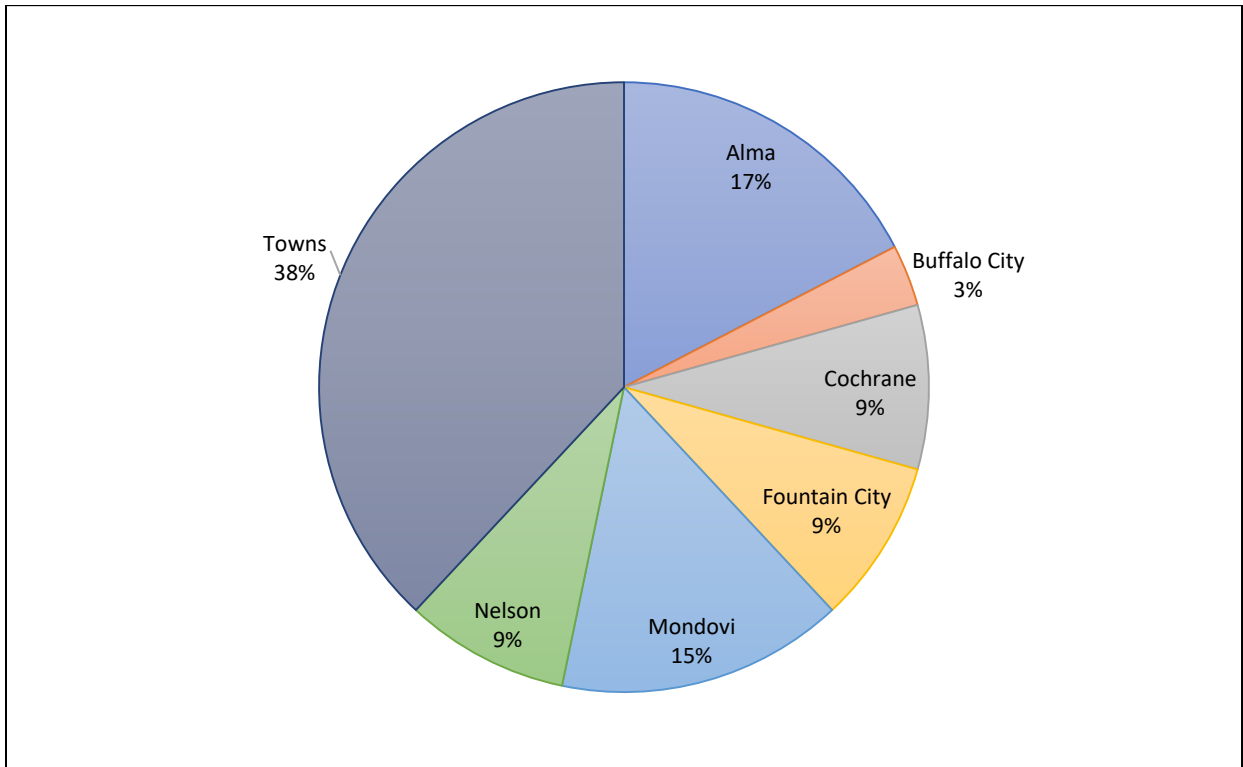
CODE	DESCRIPTION
AB	Beer for sale off site (convenience stores, grocery stores)
AC	Cider for sale off site (convenience stores, grocery stores)
AL	Liquor for sale off site (drug stores, wineries)
ALB	Beer, wine, or liquor for sale off site
BB	Beer for sale on site or off site
BL	Liquor for sale on site (winery)
BLB	Beer or liquor for sale on site (taverns, supper clubs)
CW	Wine for sale on site (restaurants) (usually in conjunction with BB)

14

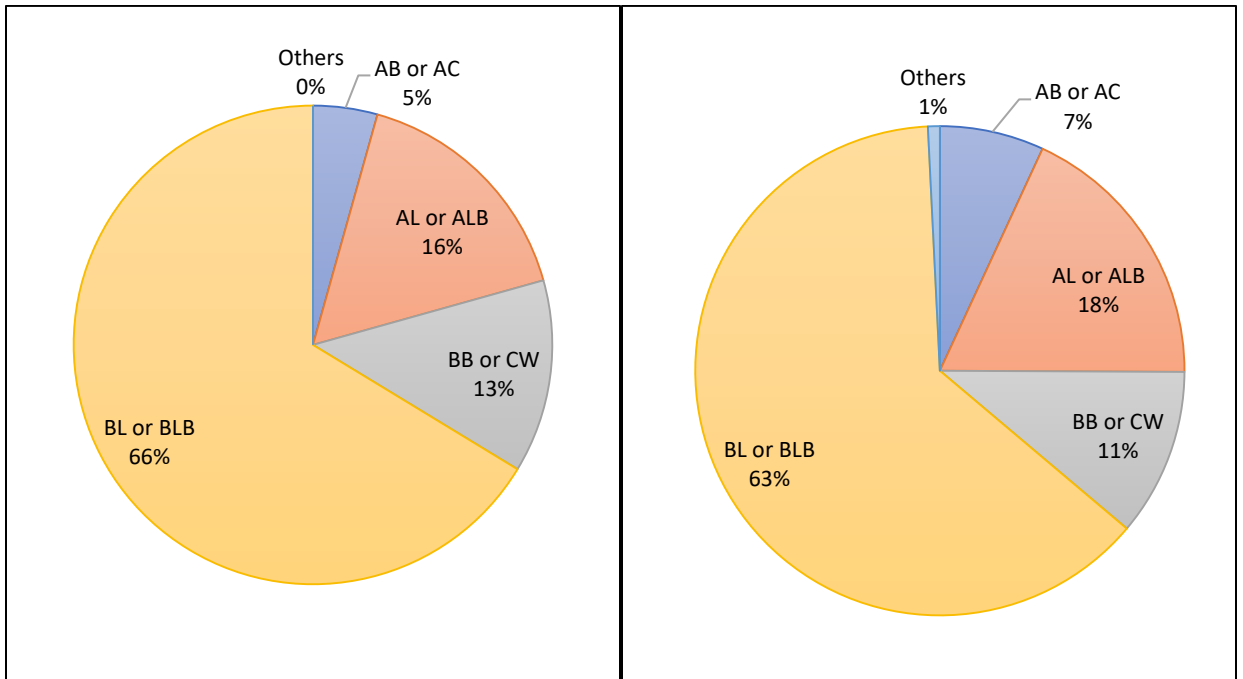
<sup>13</sup> Wisconsin Department of Revenue. Oct. 4, 2017. "WI Liquor Licenses 2017-18."

<sup>14</sup> Wisconsin Department of Revenue. "Liquor License Report, Liquor License Codes." <https://www.revenue.wi.gov/Pages/OnlineServices/liqlicrpt.aspx>. Accessed Oct. 25, 2017.

**FIGURE 10.2: ALCOHOL LICENSES IN BUFFALO COUNTY BY JURISDICTION**



**FIGURE 11: ALCOHOL BEVERAGE LICENSES BY TYPE, 2017-2018 (BUFFALO COUNTY ON THE LEFT, STATE ON THE RIGHT)**



## **HEALTH INFRASTRUCTURE**

### *Injury-to-Death Ratios*

Injury-to-death ratios are computed by dividing the total number of crash injuries by the crash fatalities. Higher rates are positive in that fatalities comprise a smaller percentage of crash victims. In general, higher rates are found in the state's urbanized southeastern and south-central regions and the Fox Valley, where crashes are more likely to occur in more developed areas (and thus at slower speeds). In rural areas, the converse is true (highways and county roads predominate, with crashes occurring at higher average speeds). Generally, rural areas also suffer from a relative lack of proximate hospitals and emergency response services, which means that some crashes which would be survivable in urban areas correspond to fatalities in more rural areas.

Between 2012 and 2017, as can be seen in Figure 12, Buffalo County reported a below-average (worse) injury-to-death ratio than the state generally (41 vs. 73.1).

### *Emergency Services*

As can be seen in Figure 13, Buffalo County doesn't contain a single classified hospital within county borders. Other hospitals surround the county's edges, however, with the Chippewa Valley Hospital—a level IV trauma center—lying 20 miles to the north.<sup>15</sup> A level II trauma center is slightly farther, about 40 miles to the northeast (the May Clinic Health System- Eau Claire). The closest level I trauma center is located about 75 miles to northwest in Saint Paul.

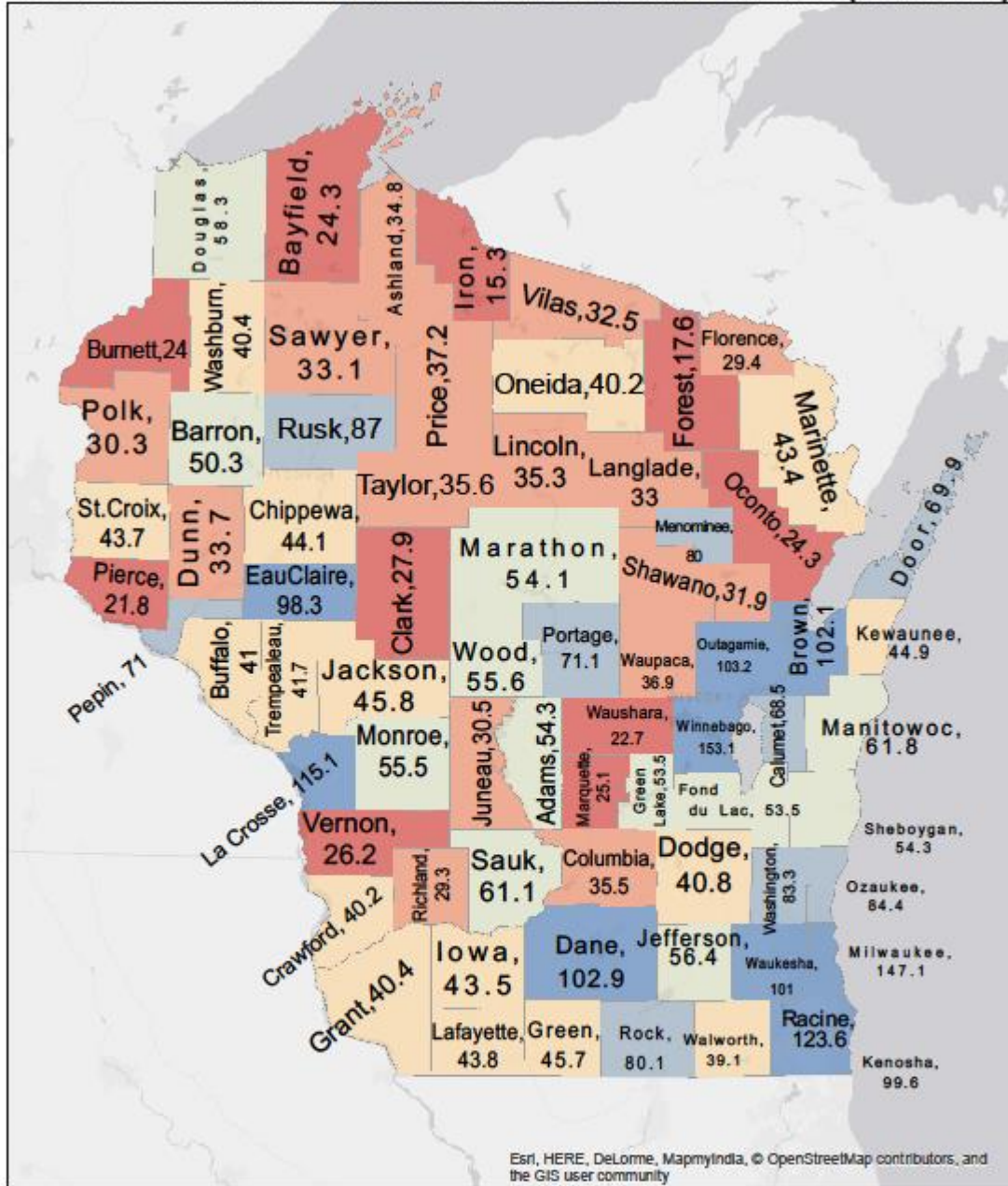
Buffalo County maintains 5 different emergency providers (Figure 14). These companies employ 103 emergency personnel. Consequently, the county is the site of 7.77 emergency response personnel per 1,000 residents. This is significantly higher than the state figure of 4.02 emergency response personnel per 1,000 residents, and somewhat counteracts the negative effects of low hospital proximity.

---

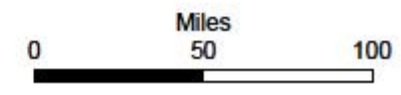
<sup>15</sup> The trauma capacities of hospitals are rated on a I-IV scale, with some remaining unrated; Level I hospitals have the greatest capacity.

FIGURE 12:

**INJURY TO FATALITY RATIOS FOR WISCONSIN COUNTIES (2012-2017)**



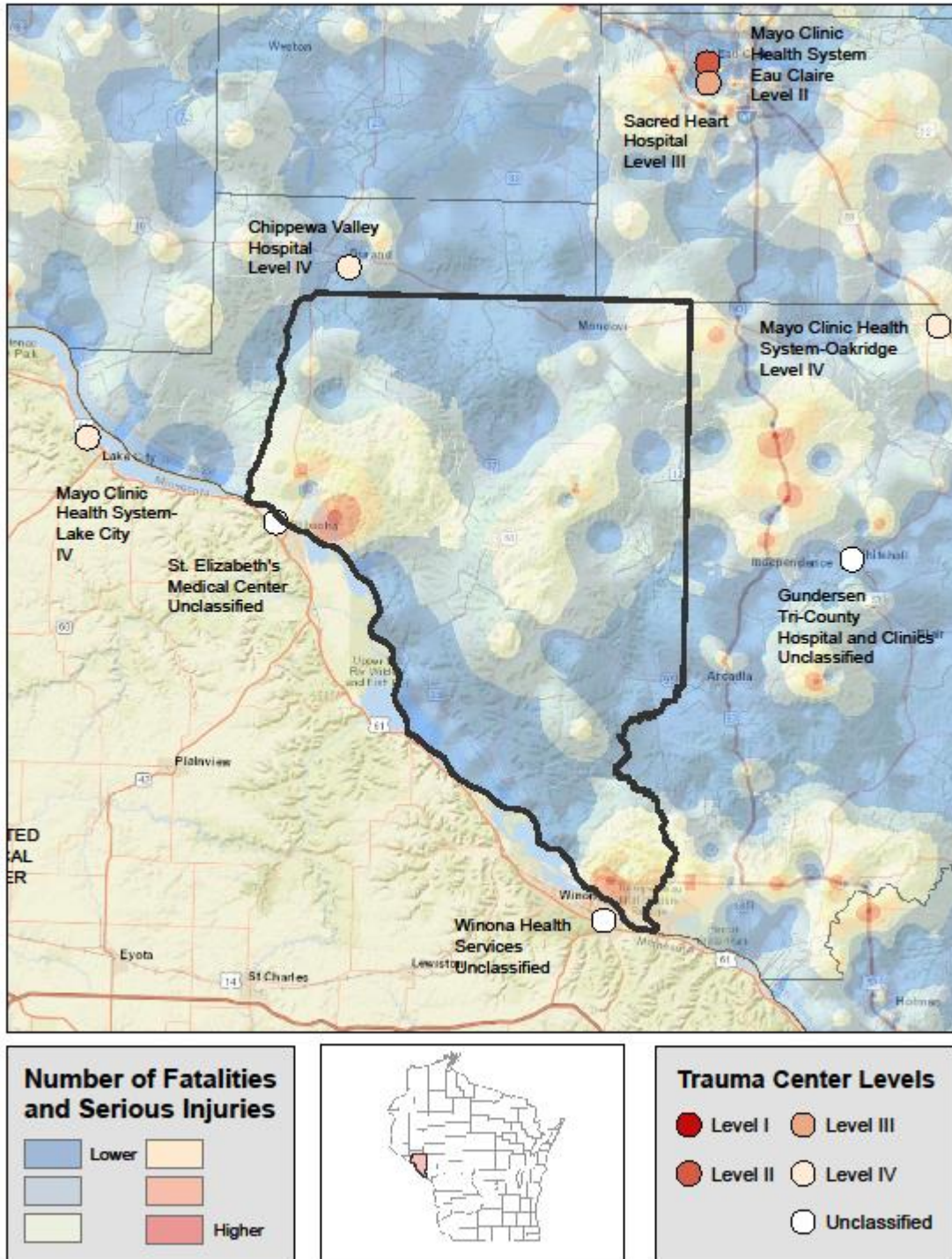
Injury to Fatality Ratios		
15.3 - 27.9	28.0 - 37.2	37.3 - 45.8
45.9 - 61.8	61.9 - 87.0	87.1 - 153.0



Prepared by Evan Moorman, 2017  
 Bureau of Transportation Safety, Division of State Patrol  
 Data from WisTransPortal and ESRI

FIGURE 13:

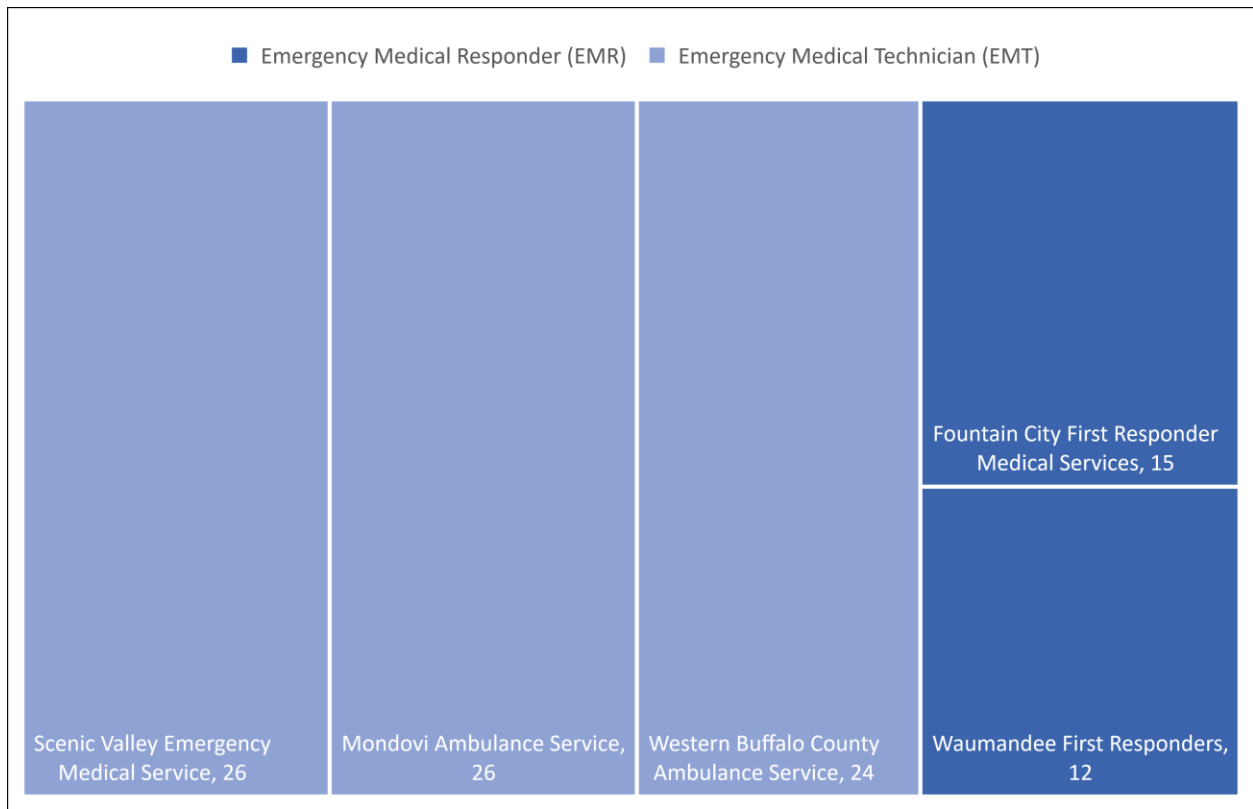
### BUFFALO COUNTY FATALITIES AND SERIOUS INJURIES (2014-2017) WITH MAP OF HOSPITALS



**FIGURE 14: NUMBER OF EMT PERSONNEL/JURISDICTION <sup>16</sup>**

Service License Level	Service Name	Number of Personnel
Emergency Medical Responder (EMR)	Fountain City First Responder Medical Services	15
Emergency Medical Responder (EMR)	Waumandee First Responders	12
Emergency Medical Technician (EMT)	Scenic Valley Emergency Medical Service	26
Emergency Medical Technician (EMT)	Mondovi Ambulance Service	26
Emergency Medical Technician (EMT)	Western Buffalo County Ambulance Service	24

**FIGURE 14.2: NUMBER AND LEVEL OF EMERGENCY RESPONDERS PER JURISDICTION**



<sup>16</sup> Department of Health Services, 2017, Received through Happel, C.

## **THE CRASHES**

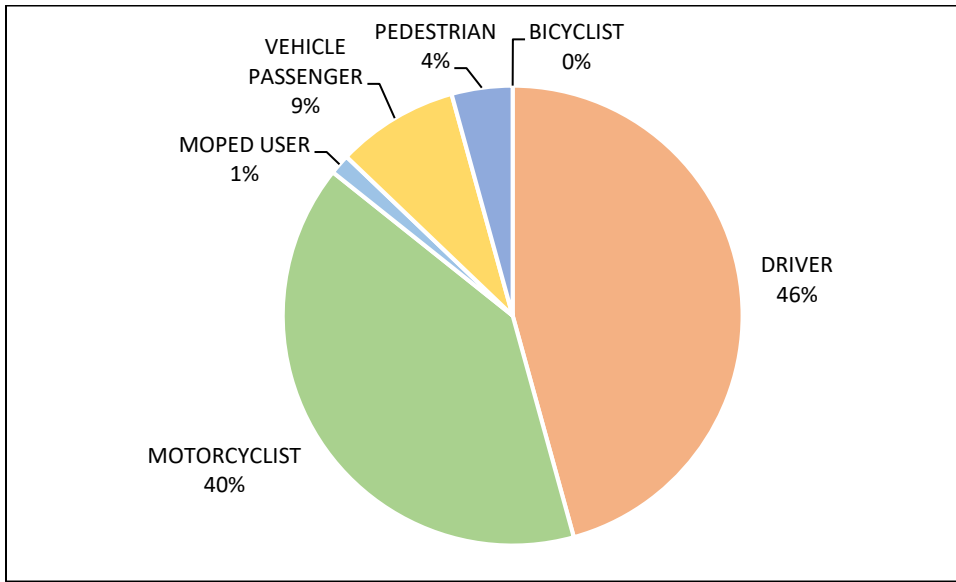
*The State of Wisconsin, in a months-long process, solicited input from a diverse variety of stakeholders to create the most recent version of our Strategic Highway Safety Plan (SHSP), a document that guides investment and safety decisions for three years. The plan has ten different issue areas. General crash-related statistics for Buffalo County are listed below, and then facts and figures are organized to correspond with these ten issue areas.*

### **GENERAL CRASH-RELATED STATISTICS**

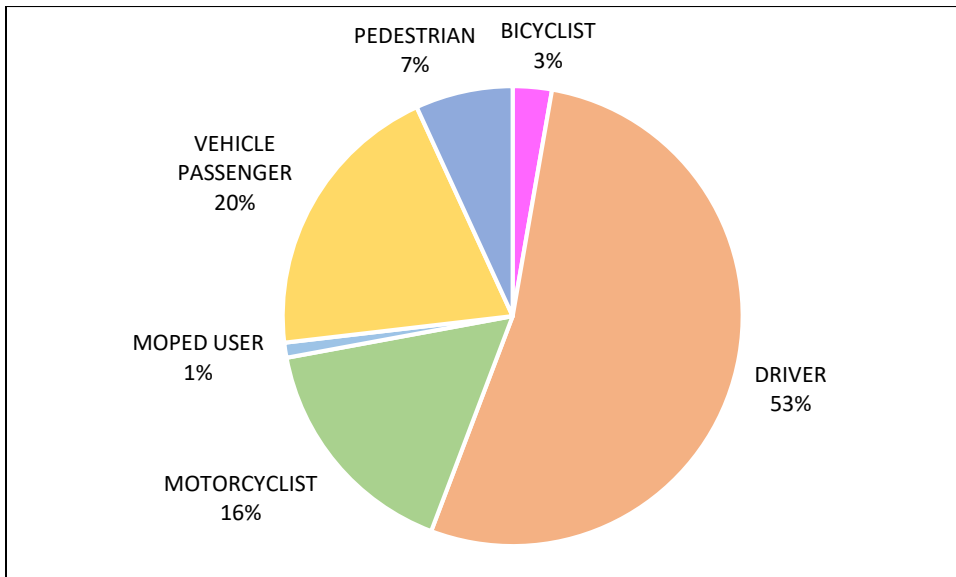
**FIGURE 15: NUMBER OF CRASHES BY MOST SEVERE INJURY IN THE CRASH AND PERSONS INVOLVED IN CRASHES BY INJURY SEVERITY**

	2012		2013		2014		2015		2016		2012-2016 Average	
	Crashes	Persons	Crashes	Persons	Crashes	Persons	Crashes	Persons	Crashes	Persons	Crashes	Persons
Fatality	2	2	1	1	3	3	2	2	3	3	2.2	2.2
Incapacitating Injury	16	22	10	10	8	11	9	10	6	6	9.8	11.8
Non-Incapacitating Injury	16	22	27	37	28	39	28	37	33	39	26.4	34.8
Possible Injury	19	31	25	29	24	33	26	32	23	32	23.4	31.4
No Apparent Injury	167	283	153	294	177	307	158	292	195	303	170.0	295.8
Totals	220	360	216	371	240	393	223	373	260	383	231.8	376.0

**FIGURE 16: FATALITIES AND INCAPACITATING INJURIES BY ROLE, BUFFALO COUNTY, 2012-2016**

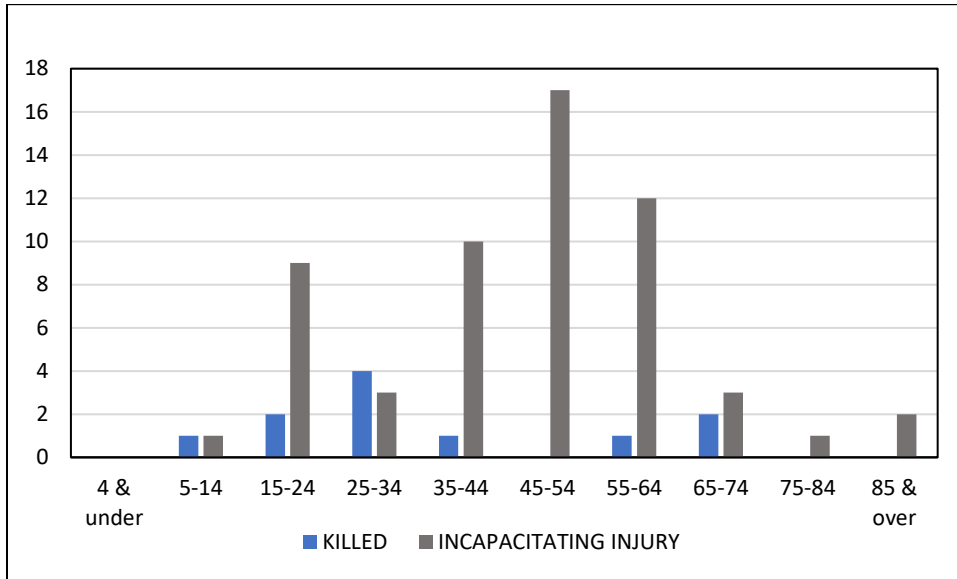


**FIGURE 17: FATALITIES AND INCAPACITATING INJURIES BY ROLE, WISCONSIN, 2012-2016**

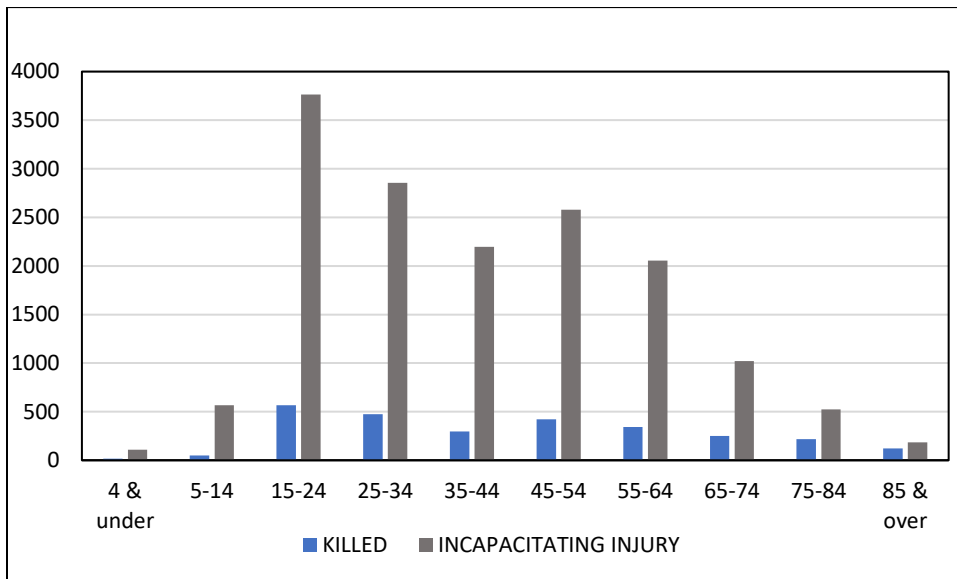


Vehicle drivers make up the highest percentage of fatalities and incapacitating injuries within Buffalo County and the state of Wisconsin.

**FIGURE 18: FATAL AND INCAPACITATING INJURIES BY AGE IN BUFFALO COUNTY, 2012-2016**

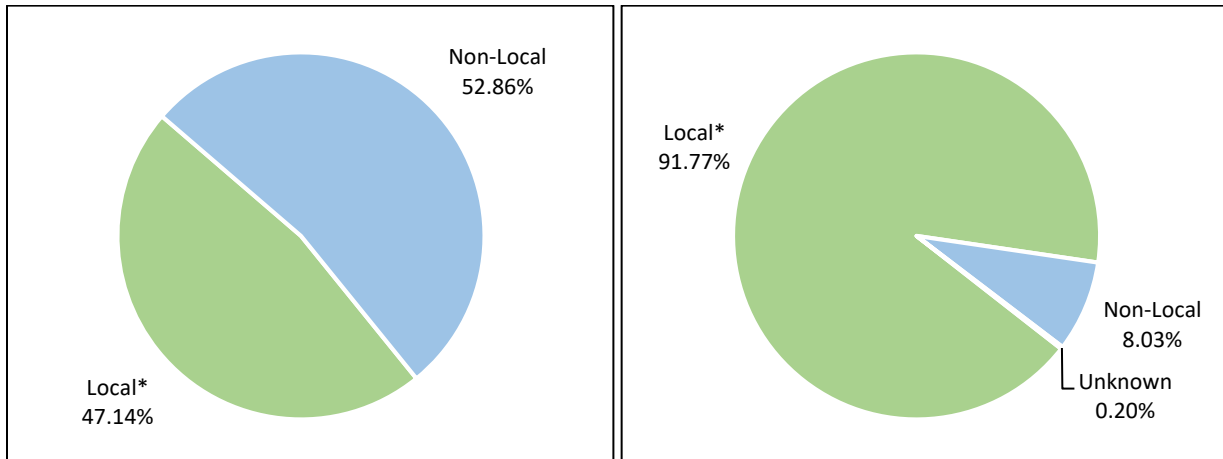


**FIGURE 19: FATAL AND INCAPACITATING INJURIES BY AGE IN WISCONSIN, 2012-2016**



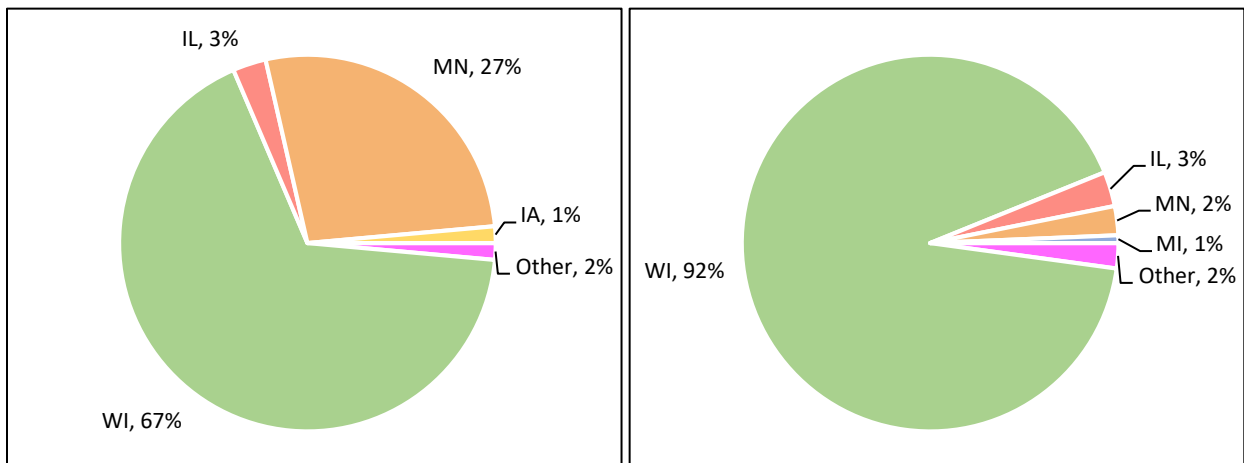
The highest number of incapacitating injuries occurred in the age group 45-54 within Buffalo County, compared to 15-24 for the state of Wisconsin. The highest number of fatalities occurred in the age group 25-34 in Buffalo County, compared to 15-24 for the state of Wisconsin.

**FIGURE 20: TOTAL FATALITIES AND INCAPACITATING INJURIES BY PLACE OF RESIDENCE (BUFFALO COUNTY ON LEFT AND STATE OF WISCONSIN ON RIGHT), 2012-2016**



\*Local is defined as persons with addresses that have ZIP codes fully or partially within the county. Over 1/2 of the fatalities and injuries in Buffalo County occurred to non-local individuals.

**FIGURE 21: FATALITIES AND INCAPACITATING INJURIES BY STATE OF RESIDENCE (BUFFALO COUNTY ON LEFT AND STATE OF WISCONSIN ON RIGHT), 2012-2016**



Over 1/4 of fatality and injury crashes in Buffalo County occurred to Minnesota residents.

**FIGURE 22: LOCATION OF CRASHES BY ROAD TYPE IN BUFFALO COUNTY, 2012-2016**

	Total Fatal Crashes	Total Non-Fatal Injury Crashes
Interstate Highways	N/A	N/A
US/State Highways	81.8%	56.0%
County Highways	9.1%	23.5%
Local Roads	9.1%	20.5%

The highest percentage of fatal crashes occurred on US/state highways within Buffalo County.

**FIGURE 23: REPORTING OF FATAL AND SERIOUS INJURY CRASHES BY AGENCY, 2012-2016**

LEA	TOTAL
BUFFALO COUNTY SHERIFF	50
FOUNTAIN CITY POLICE DEPARTMENT	1
MONDOVI POLICE DEPARTMENT	4
TREMPEALEAU COUNTY SHERIFF	1
WISCONSIN STATE PATROL	4
TOTAL	60

Buffalo County Sheriff’s Office has the highest reporting of fatal and serious injury crashes within Buffalo County.

**ISSUE AREA: IMPROVE SAFETY CULTURE, SAFETY DATA, AND DATA TECHNOLOGY**

Because this information is difficult to quantify and visualize, we recommend that readers view the most recent edition of the Wisconsin Strategic Highway Safety Plan at the following location: <http://wisconsin.gov/Documents/safety/education/frms-pubs/strategichwy-17-20.pdf>

**ISSUE AREA: REDUCE DRIVER DISTRACTION/IMPROVE DRIVER ALERTNESS**

**FIGURE 24: INATTENTION-RELATED FATAL AND INJURY-CAUSING CRASHES BY LOCATION, 2012-2016**

	Inattention-Related Fatal Crashes	Inattention-Related Non-Fatal Injury Crashes
Interstate Highways	N/A	N/A
US/State Highways	0.0%	65.9%
County Highways	100.0%	17.1%
Local Roads	0.0%	17.1%

The most common location for inattention-related fatal crashes in Buffalo County was on county highways.

**ISSUE AREA: REDUCE ALCOHOL & DRUG-IMPAIRED DRIVING**

**FIGURE 25: ALCOHOL OR DRUG-RELATED CRASHES BY LOCATION, 2012-2016**

	Alcohol or Drug-Related Fatal Crashes	Alcohol or Drug-Related Non-Fatal Injury Crashes
Interstate Highways	N/A	N/A
US/State Highways	80.0%	39.0%
County Highways	0.0%	34.1%
Local Roads	20.0%	26.8%

The most common location for alcohol/drug-related fatal crashes in Buffalo County is on US/state highways.

**FIGURE 26: IMPAIRED DRIVING STATISTICS IN BUFFALO COUNTY, 2012-2016**

Average Total Fatal Crashes	Average Non-Fatal Injury Crashes	Average Alcohol or Drug-Related Fatal Crashes	Average Alcohol or Drug-Related Non-Fatal Injury Crashes
2.2	59.6	1.0	8.2

<b>Buffalo County</b>	% of alcohol or drug-related fatal crashes to all fatal crashes	45.5%
<b>Wisconsin</b>	% of alcohol or drug-related fatal crashes to all fatal crashes	45.0%

Buffalo County had a higher percentage of alcohol or drug-related fatal crashes than the state of Wisconsin.

**ISSUE AREA: REDUCE THE INCIDENCE AND SEVERITY OF MOTORCYCLE CRASHES**

**FIGURE 27: BUFFALO COUNTY MOTORCYCLISTS KILLED OR SERIOUSLY INJURED, 2012-2016**

	% Killed	% Seriously Injured	5-Yr Ave Killed	5-Yr Ave Seriously Injured
County	27.3%	42.4%	0.6	5.0
State	15.3%	16.5%	84.8	525.6

Buffalo County had much higher percentages of motorcyclists killed and seriously injured when compared to the state.

**ISSUE AREA: IMPROVE NON-MOTORIST SAFETY**

**FIGURE 28: BUFFALO COUNTY PEDESTRIANS KILLED OR SERIOUSLY INJURED, 2012-2016**

	% Killed	% Seriously Injured	5-Yr Ave Killed	5-Yr Ave Seriously Injured
County	0.0%	5.1%	0.0	0.6
State	8.1%	6.6%	44.8	211.2

Buffalo County had a lower percentage of crashes where pedestrians seriously injured, compared to the state. There were zero pedestrian fatalities from 2012 to 2016.

**FIGURE 29: PEDESTRIANS INVOLVED IN CRASHES BY ACTION AND LOCATION, 2012-2016**

PEDESTRIAN ACTION	PEDESTRIAN LOCATION			TOTAL
	BLANK	IN CROSSWALK	IN ROADWAY	
BLANK	1	0	3	4
WALKING NOT FACING TRAFFIC	0	1	0	1
DARK CLOTHING	0	1	0	1
WALKING FACING TRAFFIC	0	0	1	1
TOTAL	1	2	4	7

**FIGURE 30: BUFFALO COUNTY BICYCLISTS KILLED OR SERIOUSLY INJURED, 2012-2016**

	% Killed	% Seriously Injured	5-Yr Ave Killed	5-Yr Ave Seriously Injured
County	0.0%	0.0%	0.0	0.0
State	1.8%	2.9%	10.2	92.4

No bicyclists were killed or seriously injured within Buffalo County from 2012 to 2016.

**ISSUE AREA: IMPROVE SAFETY OF INTERSECTIONS**

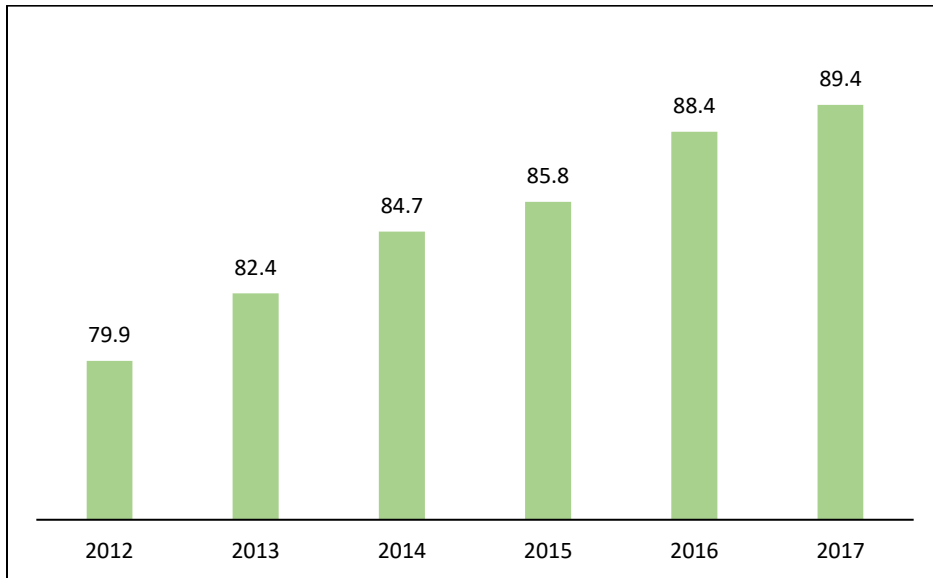
**FIGURE 31: BUFFALO COUNTY TOTAL CRASHES BY LOCATION, 2012-2016**

	County	State
% Intersection	23.0%	37.8%
% Non-Intersection	77.0%	62.8%

There were fewer crashes at intersections in Buffalo County, compared to the state of Wisconsin.

**ISSUE AREA: INCREASE OCCUPANT PROTECTION**

**FIGURE 32: SEATBELT USE STATEWIDE, 2012-2017**



Seatbelt usage statewide has increased over the past six years.

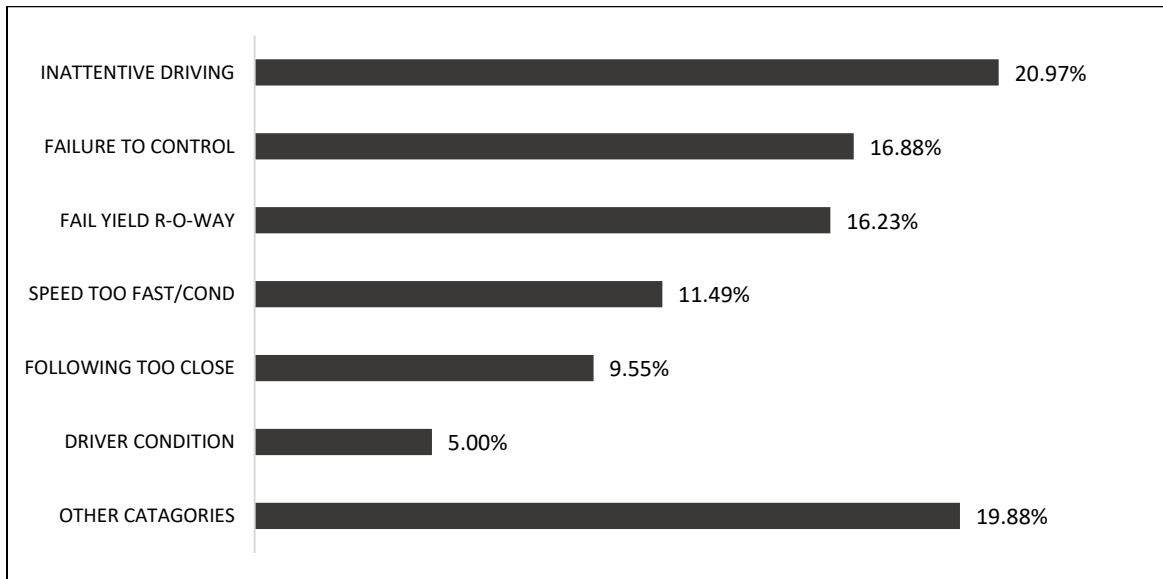
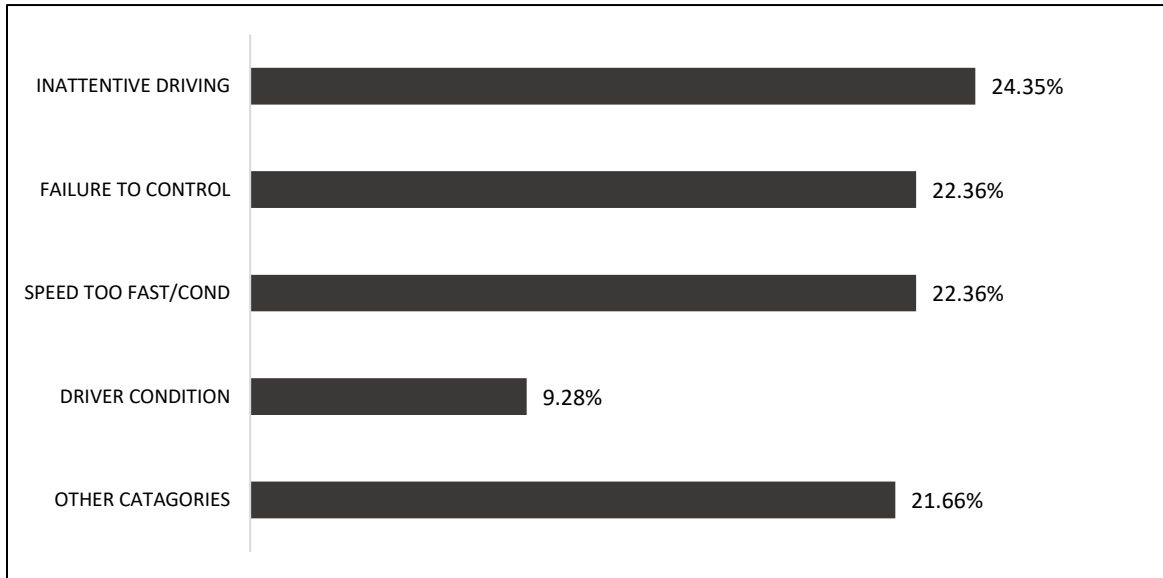
**FIGURE 32.2: SAFETY EQUIPMENT USAGE IN PASSENGER CAR AND LIGHT TRUCKS DURING CRASHES, 2012-2016**

	Belted	Unbelted
Fatalities and Serious Injuries	80.6%	19.4%

19% of the people killed or seriously injured in crashes in Buffalo County were not wearing a seatbelt.

**ISSUE AREA: CURB AGGRESSIVE DRIVING/REDUCE SPEED-RELATED CRASHES**

**FIGURE 33: DRIVER POSSIBLE CONTRIBUTING CIRCUMSTANCES FOR CRASHES IN BUFFALO COUNTY (TOP) AND STATEWIDE (BOTTOM), 2012-2016**



**Inattentive driving** was the most significant contributing factor for all crashes within Buffalo County.

**FIGURE 34: SPEEDING STATISTICS IN BUFFALO COUNTY, 2012-2016**

Average Speed-Related Fatal Crashes	Average Speed-Related Non-Fatal Injury Crashes
0.6	17.2

<b>Buffalo County</b>	% of speed-related fatal crashes to all fatal crashes	27.3%
<b>Wisconsin</b>	% of speed-related fatal crashes to all fatal crashes	28.9%

	Speed-Related Fatal Crashes	Speed-Related Non-Fatal Injury Crashes
Interstate Highways	N/A	N/A
US/State Highways	66.7%	37.2%
County Highways	0.0%	36.0%
Local Roads	33.3%	26.7%

Buffalo County had a lower percentage of speed-related fatal crashes than the state. The most common location for speed-related fatal crashes in Buffalo County was on US/state highways.

**ISSUE AREA: REDUCE LANE DEPARTURE CRASHES**

**FIGURE 35: BUFFALO COUNTY RUN-OFF-THE-ROAD CRASHES, 2012-2016**

	5 Year Average of Run-Off-the-Road crashes	% of Run-Off-the-Road crashes to total crashes
County	102.8	44.3%
State	30,395.6	25.4%

Buffalo County had a greater percentage of run-off-the-road crashes when compared to the state.

## **THE IMPACT**

The number of persons involved in traffic crashes is low, and the number of crash-related emergency room visits is very low. Medical costs from crashes are high, comparatively.

### ***2011-2015 Annual Averages***

	Buffalo County	Wisconsin
Average Annual Population	13,533	5,716,883
Persons in Crashes (per 1,000 residents)	26.3	46.0
Crash-Related Emergency Room Visits (per 100,000 residents)	186.6	407.3
Crash-Related Hospitalizations (per 100,000 residents)	69.5	49.3
Quality of Life Costs (per 100,000 residents)	\$49,150,632	\$36,819,900
Lost Years of Life (per 1,000 residents)	3.62	3.04
Medical Costs (per 100,000 residents)	\$14,451,337	\$10,482,526

<sup>17,18</sup>

---

<sup>17</sup>University of Wisconsin-Madison, Center for Health Systems Research & Analysis. Wisconsin Crash Outcome Data Evaluation System Project. "Wisconsin CODES Report Builder Custom Reporting System," <http://www.chsra.wisc.edu/codes/query/overview.htm> Accessed Oct. 2, 2017.

<sup>18</sup>University of Wisconsin-Madison, Center for Health Systems Research & Analysis. Wisconsin Crash Outcome Data Evaluation System Project. "Community Crash Reports," <http://www.chsra.wisc.edu/codes/community/default.htm> Accessed Oct. 3, 2017.

**THE GRANTS**

The Bureau of Transportation Safety targets counties throughout the state based on crash frequency and severity, considering their size, location, and contributing behavioral factors as indicated on crash forms received from local law enforcement agencies. Overtime enforcement grants are offered to the law enforcement agencies of a county to form a high-visibility enforcement task force that will coordinate efforts with each other and locals to change the driving behavior in their county. If a county makes the targeting list for an enforcement grant to address a behavioral highway safety issue, all law enforcement agencies within the county are eligible to participate on a task force to address the problem. National priority issue areas include impaired driving, seat belt use, speeding, and distracted driving.

*2016 Grant Participation*

	Impaired Driving	Occupant Protection	Speed
Buffalo Co. Sheriff's Office	\$8,415.36		\$12,379.83
Alma Police Dept			
Fountain City Police Dept			
Mondovi Police Dept	\$9,600		

The Buffalo County Sheriff's Office and Mondovi Police Department participated on the Buffalo/Pepin Countywide Traffic Safety Task Force for OWI.

*2017 Task Force Participation and 2018 Task Force Eligibility*

	Impaired Driving	Occupant Protection	Speed
Buffalo County Law Enforcement Agencies	not eligible	not eligible	not eligible

*Agency Mobilizations 2016-2017*

	FY2016 Drive Sober or Get Pulled Over- Winter Holidays	2016 Click It or Ticket	2016 Drive Sober or Get Pulled Over – Labor Day	FY2017 Drive Sober or Get Pulled Over- Winter Holidays	2017 Click It or Ticket	2017 Drive Sober or Get Pulled Over – Labor Day
Buffalo Co. Sheriff's Office	yes	yes	yes	yes	yes	yes
Alma Police Dept						
Fountain City Police Dept					yes	
Mondovi Police Dept	yes	yes	yes	yes	yes	yes

The Wisconsin State Patrol participates in all three mobilizations each year. Law enforcement agencies should participate for the chance to receive an equipment grant for ongoing high-visibility enforcement.