

<b>IH 39/90: USH 14 TO STATE LINE (ROCK COUNTY)</b> <b>NIGHTTIME CLOSURE</b> <b>DIVERSION ROUTE: IH 43 - STH 140 - USH 14 - USH 11</b>	<b>MAY</b>
	Analyzed for 2009 Construction Season

**SUMMARY OF TRAFFIC MODEL OUTPUT**

SUNDAY WESTBOUND DIRECTION

TIME OF DAY	FLOWS AND CAPACITY IN VEH/HR								AVERAGE SPEEDS IN MPH						
	MAIN ROUTE		ALTERNATE ROUTE		SITE CAPA CITY	FLOW MAIN ROUTE	FLOW DIVER -TING	TOTAL DIVN FLOW	AV.DEL PER VEH (MINS)	AVERAGE QUEUE (VEH)	MAIN ROUTE		ALTERNATE ROUTE		
	DEMAND FLOW	PCT HEAVY	NORMAL FLOW	PCT HEAVY							WITHOUT WORK ZN	WITH WORK ZN	SITE	WITHOUT WORK ZN	WITH WORK ZN
MID-1 AM	250	0.0	36	0.0	1500	250	0	36	0.45	0	65.9	62.8	44.5	39.3	39.3
1-2 AM	171	0.0	25	0.0	1500	171	0	25	0.44	0	66.1	63.0	44.8	39.4	39.4
2-3 AM	153	0.0	23	0.0	1500	153	0	23	0.44	0	66.1	63.0	44.9	39.4	39.4
3-4 AM	142	0.0	21	0.0	1500	142	0	21	0.44	0	66.1	63.1	44.9	39.5	39.5
4-5 AM	149	0.0	22	0.0	1500	149	0	22	0.44	0	66.1	63.1	44.9	39.5	39.5
5-6 AM	257	0.0	37	0.0	1500	257	0	37	0.45	0	65.9	62.8	44.5	39.3	39.3
6-7 AM	386	0.0	56	0.0	1500	386	0	56	0.46	0	65.6	62.5	44.0	39.1	39.1
7-8 AM	601	0.0	87	0.0	1500	601	0	87	0.48	0	65.3	62.0	43.1	38.7	38.7
8-9 AM	870	0.0	127	0.0	1500	870	0	127	0.51	0	64.8	61.4	42.2	38.2	38.2
9-10 AM	1166	0.0	170	0.0	OFF	1166	0	170	0.00	0	64.2	64.2	64.2	37.6	37.6
10-11 AM	1482	0.0	215	0.0	OFF	1482	0	215	0.00	0	63.7	63.7	63.7	37.1	37.1
11A-NOON	1572	0.0	229	0.0	OFF	1572	0	229	0.00	0	63.5	63.5	63.5	36.9	36.9
NOON-1PM	1595	0.0	232	0.0	OFF	1595	0	232	0.00	0	63.4	63.4	63.4	36.9	36.9
1-2 PM	1573	0.0	229	0.0	OFF	1573	0	229	0.00	0	63.5	63.5	63.5	36.9	36.9
2-3 PM	1572	0.0	229	0.0	OFF	1572	0	229	0.00	0	63.5	63.5	63.5	36.9	36.9
3-4 PM	1553	0.0	225	0.0	OFF	1553	0	225	0.00	0	63.5	63.5	63.5	36.9	36.9
4-5 PM	1568	0.0	227	0.0	OFF	1568	0	227	0.00	0	63.5	63.5	63.5	36.9	36.9
5-6 PM	1448	0.0	210	0.0	OFF	1448	0	210	0.00	0	63.7	63.7	63.7	37.1	37.1
6-7 PM	1292	0.0	187	0.0	OFF	1292	0	187	0.00	0	64.0	64.0	64.0	37.4	37.4
7-8 PM	1144	0.0	166	0.0	1500	1144	0	166	0.56	0	64.3	60.6	40.4	37.7	37.7
8-9 PM	1012	0.0	147	0.0	1500	1012	0	147	0.52	0	64.5	61.1	41.6	37.9	37.9
9-10 PM	743	0.0	108	0.0	1500	743	0	108	0.49	0	65.0	61.7	42.6	38.4	38.4
10-11 PM	566	0.0	82	0.0	1500	566	0	82	0.48	0	65.3	62.1	43.3	38.8	38.8
11PM-MID	392	0.0	57	0.0	1500	392	0	57	0.46	0	65.6	62.5	43.9	39.1	39.1

"OFF" INDICATES NO ROAD WORK (ALL LANES OPEN TO TRAFFIC)

*----- SITE BREAKDOWN DELAYS -----*	
BREAKDOWN DURATION (MINS)	0
RANGE OF QUEUE DELAY - MIN	0.0
(VEH-H) MAX	0.0
RANGE OF DIVN DELAY - MIN	0.0
(VEH-H) MAX	0.0
AV BREAKDOWNS PER DAY	0.00
AV QUEUE DELAY/DAY (VEH-H)	0.0
AV DIVN DELAY/DAY (VEH-H)	0.0
AV TOTAL DELAY/DAY (VEH-H)	0.0

*----- SITE ACCIDENT DELAYS -----*	
ACCIDENT DURATION (MINS)	0
RANGE OF QUEUE DELAY - MIN	0.0
(VEH-H) MAX	0.0
RANGE OF DIVN DELAY - MIN	0.0
(VEH-H) MAX	0.0
AV ACCIDENTS PER DAY	0.00
AV QUEUE DELAY/DAY (VEH-H)	0.0
AV DIVN DELAY/DAY (VEH-H)	0.0
AV TOTAL DELAY/DAY (VEH-H)	0.0

AVERAGE ACCIDENT NUMBERS (PIA/DAY)	
MAIN ROUTE WITHOUT WORKS	0.0345
MAIN ROUTE WITH WORKS	0.0340
DIVERSION	0.0702

PIA: Personal Injury Accidents

IMPACTS ON ROAD USERS	
ROAD USER COSTS PER DAY ( DOLLARS)	\$808
CONGESTED HOURS PER DAY*	0

\*Delays Exceeding 15 Minutes

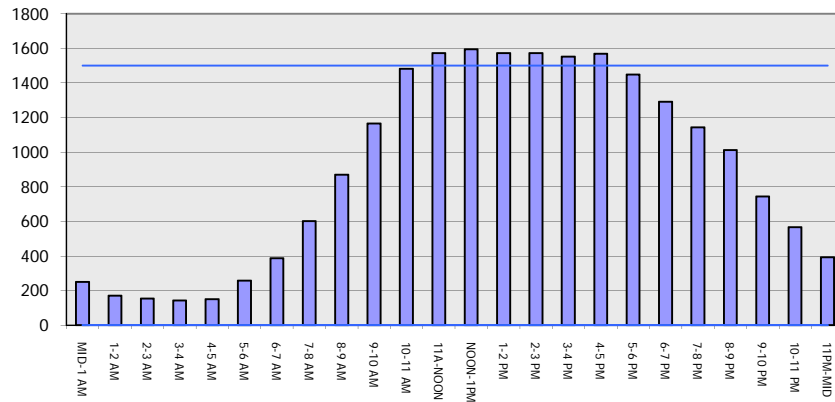
**IH 39/90: USH 14 TO STATE LINE (ROCK COUNTY)**  
**NIGHTTIME CLOSURE**  
**DIVERSION ROUTE: IH 43 - STH 140 - USH 14 - USH 11**

**MAY**  
 Analyzed for 2009  
 Construction Season

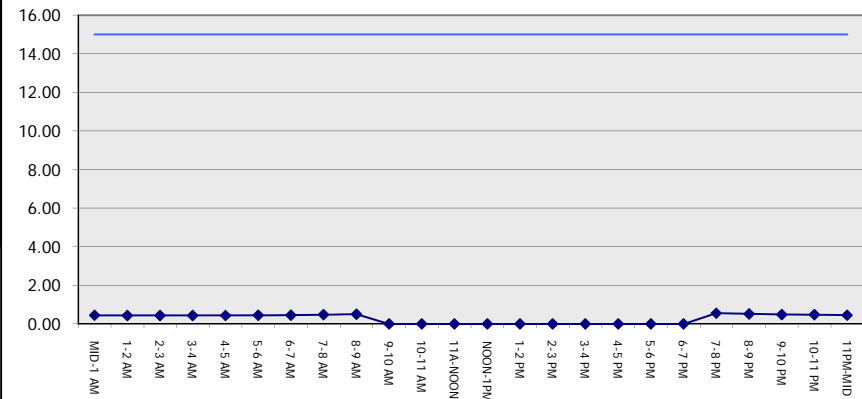
**GRAPHICAL REPRESENTATION OF TRAFFIC MODEL INPUT AND OUTPUT**

**SUNDAY WESTBOUND DIRECTION**

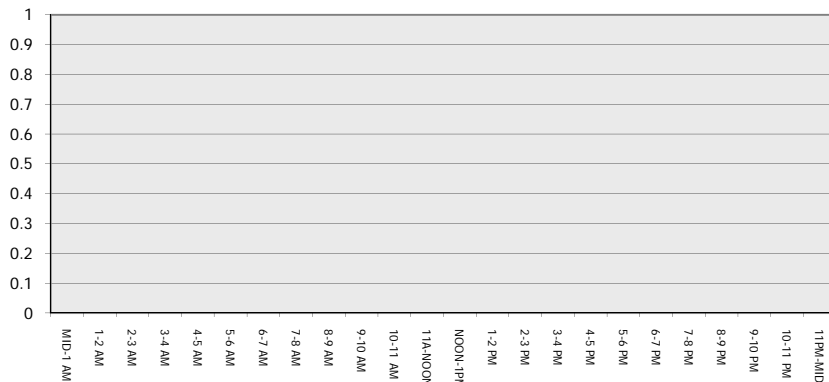
**Main Route - Traffic Demand (Vehicles Per Hour)**



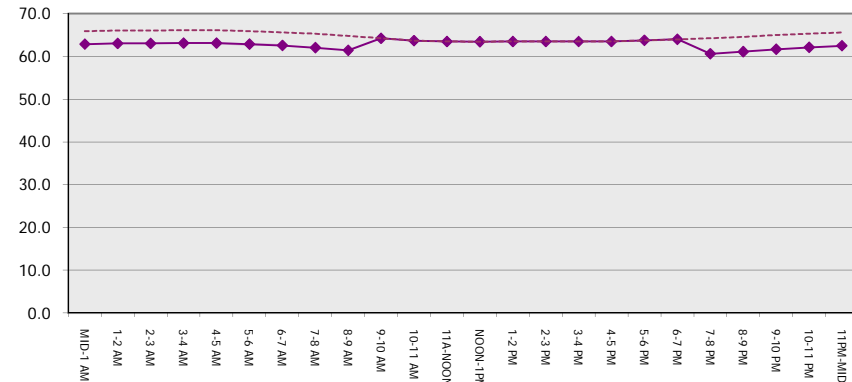
**Main Route Average Delay Per Vehicle (Minutes)**



**Main Route - Average Queue Length (Vehicles)**



**Main Route - Average Speed (MPH)**



<b>IH 39/90: USH 14 TO STATE LINE (ROCK COUNTY)</b> <b>NIGHTTIME CLOSURE</b> <b>DIVERSION ROUTE: IH 43 - STH 140 - USH 14 - USH 11</b>	<b>MAY</b>
	Analyzed for 2009 Construction Season

**SUMMARY OF TRAFFIC MODEL OUTPUT**

SUNDAY EASTBOUND DIRECTION

TIME OF DAY	FLOWS AND CAPACITY IN VEH/HR									AVERAGE SPEEDS IN MPH					
	MAIN		DIVERSION		SITE CAPA CITY	FLOW MAIN ROUTE	FLOW DIVER -TING	TOTAL DIVN FLOW	AV.DEL PER VEH (MINS)	AVERAGE QUEUE (VEH)	MAIN ROUTE		SITE	ALTERNATE ROUTE	
	DEMAND FLOW	PCT HEAVY	NORMAL FLOW	PCT HEAVY							WITHOUT WORK ZN	WITH WORK ZN		WITHOUT WORK ZN	WITH WORK ZN
MID-1 AM	276	0.0	40	0.0	1500	276	0	40	0.45	0	65.9	62.8	44.4	39.2	39.2
1-2 AM	186	0.0	27	0.0	1500	186	0	27	0.44	0	66.0	63.0	44.7	39.4	39.4
2-3 AM	152	0.0	23	0.0	1500	152	0	23	0.44	0	66.1	63.0	44.9	39.4	39.4
3-4 AM	130	0.0	19	0.0	1500	130	0	19	0.44	0	66.1	63.1	45.0	39.5	39.5
4-5 AM	136	0.0	20	0.0	1500	136	0	20	0.44	0	66.1	63.1	45.0	39.5	39.5
5-6 AM	186	0.0	27	0.0	1500	186	0	27	0.44	0	66.0	63.0	44.7	39.4	39.4
6-7 AM	327	0.0	47	0.0	1500	327	0	47	0.45	0	65.8	62.7	44.2	39.2	39.2
7-8 AM	553	0.0	80	0.0	1500	553	0	80	0.48	0	65.3	62.1	43.3	38.8	38.8
8-9 AM	885	0.0	129	0.0	1500	885	0	129	0.51	0	64.7	61.4	42.1	38.1	38.1
9-10 AM	1252	0.0	182	0.0	OFF	1252	0	182	0.00	0	64.0	64.0	64.0	37.5	37.5
10-11 AM	1502	0.0	218	0.0	OFF	1502	0	218	0.00	0	63.6	63.6	63.6	37.0	37.0
11A-NOON	1699	0.0	247	0.0	OFF	1699	0	247	0.00	0	63.2	63.2	63.2	36.7	36.7
NOON-1PM	1722	0.0	250	0.0	OFF	1722	0	250	0.00	0	63.2	63.2	63.2	36.6	36.6
1-2 PM	1762	0.0	256	0.0	OFF	1762	0	256	0.00	0	63.1	63.1	63.1	36.6	36.6
2-3 PM	1864	0.0	271	0.0	OFF	1864	0	271	0.00	0	62.9	62.9	62.9	36.4	36.4
3-4 PM	1846	0.0	268	0.0	OFF	1846	0	268	0.00	0	63.0	63.0	63.0	36.4	36.4
4-5 PM	1791	0.0	260	0.0	OFF	1791	0	260	0.00	0	63.0	63.0	63.0	36.5	36.5
5-6 PM	1764	0.0	256	0.0	OFF	1764	0	256	0.00	0	63.1	63.1	63.1	36.6	36.6
6-7 PM	1646	0.0	239	0.0	OFF	1646	0	239	0.00	0	63.3	63.3	63.3	36.8	36.8
7-8 PM	1528	0.0	222	0.0	1499	1528	0	222	2.06	28	63.5	52.2	30.8	37.0	37.0
8-9 PM	1188	0.0	173	0.0	1500	1188	0	173	0.68	1	64.1	59.8	38.9	37.6	37.6
9-10 PM	970	0.0	141	0.0	1500	970	0	141	0.52	0	64.6	61.2	41.8	38.0	38.0
10-11 PM	646	0.0	94	0.0	1500	646	0	94	0.49	0	65.2	61.9	43.0	38.6	38.6
11PM-MID	441	0.0	64	0.0	1500	441	0	64	0.47	0	65.6	62.4	43.7	38.9	38.9

"OFF" INDICATES NO ROAD WORK (ALL LANES OPEN TO TRAFFIC)

*----- SITE BREAKDOWN DELAYS -----*	
BREAKDOWN DURATION (MINS)	0
RANGE OF QUEUE DELAY - MIN	0.0
(VEH-H) MAX	0.0
RANGE OF DIVN DELAY - MIN	0.0
(VEH-H) MAX	0.0
AV BREAKDOWNS PER DAY	0.00
AV QUEUE DELAY/DAY (VEH-H)	0.0
AV DIVN DELAY/DAY (VEH-H)	0.0
AV TOTAL DELAY/DAY (VEH-H)	0.0

*----- SITE ACCIDENT DELAYS -----*	
ACCIDENT DURATION (MINS)	0
RANGE OF QUEUE DELAY - MIN	0.0
(VEH-H) MAX	0.0
RANGE OF DIVN DELAY - MIN	0.0
(VEH-H) MAX	0.0
AV ACCIDENTS PER DAY	0.00
AV QUEUE DELAY/DAY (VEH-H)	0.0
AV DIVN DELAY/DAY (VEH-H)	0.0
AV TOTAL DELAY/DAY (VEH-H)	0.0

AVERAGE ACCIDENT NUMBERS (PIA/DAY)	
MAIN ROUTE WITHOUT WORKS	0.0389
MAIN ROUTE WITH WORKS	0.0384
DIVERSION	0.0793

PIA: Personal Injury Accidents

IMPACTS ON ROAD USERS	
ROAD USER COSTS PER DAY ( DOLLARS)	\$1,505
CONGESTED HOURS PER DAY*	0

\*Delays Exceeding 15 Minutes

**IH 39/90: USH 14 TO STATE LINE (ROCK COUNTY)**  
**NIGHTTIME CLOSURE**  
**DIVERSION ROUTE: IH 43 - STH 140 - USH 14 - USH 11**

**MAY**  
 Analyzed for 2009  
 Construction Season

**GRAPHICAL REPRESENTATION OF TRAFFIC MODEL INPUT AND OUTPUT**  
**SUNDAY EASTBOUND DIRECTION**

