

IH 90: USH 14/61 TO USH 53 NIGHTTIME CLOSURE DIVERSION ROUTE: USH 53 TO USH 14/61	OCTOBER Analyzed for 2009 Construction Season
--	--

SUMMARY OF TRAFFIC MODEL OUTPUT

FRIDAY WESTBOUND DIRECTION

TIME OF DAY	FLOWS AND CAPACITY IN VEH/HR										AVERAGE SPEEDS IN MPH				
	MAIN ROUTE		ALTERNATE ROUTE		SITE CAPA CITY	FLOW MAIN ROUTE	FLOW DIVER -TING	TOTAL DIVN FLOW	AV.DEL PER VEH (MINS)	AVERAGE QUEUE (VEH)	MAIN ROUTE		ALTERNATE ROUTE		
	DEMAND FLOW	PCT HEAVY	NORMAL FLOW	PCT HEAVY							WITHOUT WORK ZN	WITH WORK ZN	SITE	WITHOUT WORK ZN	WITH WORK ZN
MID-1 AM	246	0.0	211	7.0	1500	246	0	211	0.45	0	66.0	57.8	44.5	15.5	15.5
1-2 AM	177	0.0	151	7.0	1500	177	0	151	0.44	0	66.1	58.0	44.8	17.5	17.5
2-3 AM	178	0.0	153	7.0	1500	178	0	153	0.44	0	66.1	58.0	44.8	17.4	17.4
3-4 AM	176	0.0	151	7.0	1500	176	0	151	0.44	0	66.1	58.0	44.8	17.5	17.5
4-5 AM	224	0.0	193	7.0	1500	224	0	193	0.44	0	66.0	57.9	44.6	16.1	16.1
5-6 AM	341	0.0	293	7.0	OFF	341	0	293	0.00	0	65.8	65.8	65.8	12.8	12.8
6-7 AM	489	0.0	420	7.0	OFF	489	0	420	0.00	0	65.5	65.5	65.5	9.1	9.1
7-8 AM	737	0.0	632	7.0	OFF	737	0	632	0.00	0	65.0	65.0	65.0	7.5	7.5
8-9 AM	911	0.0	782	7.0	OFF	911	0	782+	0.00	0	64.7	64.7	64.7	6.3	6.3
9-10 AM	1009	0.0	865	7.0	OFF	1009	0	865+	0.00	0	64.5	64.5	64.5	5.7	5.7
10-11 AM	1125	0.0	966	7.0	OFF	1125	0	966+	0.00	0	64.3	64.3	64.3	5.6	5.6
11A-NOON	1218	0.0	1045	7.0	OFF	1218	0	1045+	0.00	0	64.1	64.1	64.1	5.6	5.6
NOON-1PM	1239	0.0	1063	7.0	OFF	1239	0	1063+	0.00	0	64.1	64.1	64.1	5.6	5.6
1-2 PM	1357	0.0	1165	7.0	OFF	1357	0	1165+	0.00	0	63.8	63.8	63.8	5.6	5.6
2-3 PM	1639	0.0	1406	7.0	OFF	1639	0	1406+	0.00	0	63.3	63.3	63.3	5.6	5.6
3-4 PM	1695	0.0	1456	7.0	OFF	1695	0	1456+	0.00	0	63.2	63.2	63.2	5.6	5.6
4-5 PM	1710	0.0	1468	7.0	OFF	1710	0	1468+	0.00	0	63.2	63.2	63.2	5.6	5.6
5-6 PM	1530	0.0	1313	7.0	OFF	1530	0	1313+	0.00	0	63.5	63.5	63.5	5.6	5.6
6-7 PM	1377	0.0	1182	7.0	OFF	1377	0	1182+	0.00	0	63.8	63.8	63.8	5.6	5.6
7-8 PM	1112	0.0	955	7.0	1500	1112	0	955+	0.53	0	64.3	55.3	41.3	5.6	5.6
8-9 PM	844	0.0	724	7.0	1500	844	0	724+	0.50	0	64.8	56.1	42.2	6.8	6.8
9-10 PM	662	0.0	568	7.0	1500	662	0	568	0.49	0	65.1	56.6	42.9	8.0	8.0
10-11 PM	549	0.0	471	7.0	1500	549	0	471	0.48	0	65.4	56.9	43.3	8.8	8.8
11PM-MID	305	0.0	263	7.0	1500	305	0	263	0.45	0	65.8	57.6	44.3	13.8	13.8

"OFF" INDICATES NO ROAD WORK (ALL LANES OPEN TO TRAFFIC)

+ INDICATES DIVERSION FLOW EXCEEDS USER-SPECIFIED WARNING LIMIT

----- SITE BREAKDOWN DELAYS -----	
BREAKDOWN DURATION (MINS)	0
RANGE OF QUEUE DELAY - MIN (VEH-H) MAX	0.0
RANGE OF DIVN DELAY - MIN (VEH-H) MAX	0.0
AV BREAKDOWNS PER DAY	0.00
AV QUEUE DELAY/DAY (VEH-H)	0.0
AV DIVN DELAY/DAY (VEH-H)	0.0
AV TOTAL DELAY/DAY (VEH-H)	0.0

----- SITE ACCIDENT DELAYS -----	
ACCIDENT DURATION (MINS)	0
RANGE OF QUEUE DELAY - MIN (VEH-H) MAX	0.0
RANGE OF DIVN DELAY - MIN (VEH-H) MAX	0.0
AV ACCIDENTS PER DAY	0.00
AV QUEUE DELAY/DAY (VEH-H)	0.0
AV DIVN DELAY/DAY (VEH-H)	0.0
AV TOTAL DELAY/DAY (VEH-H)	0.0

AVERAGE ACCIDENT NUMBERS (PIA/DAY)	
MAIN ROUTE WITHOUT WORKS	0.0116
MAIN ROUTE WITH WORKS	0.0113
DIVERSION	0.1979

PIA: Personal Injury Accidents

IMPACTS ON ROAD USERS	
ROAD USER COSTS PER DAY (DOLLARS)	\$461
CONGESTED HOURS PER DAY*	0

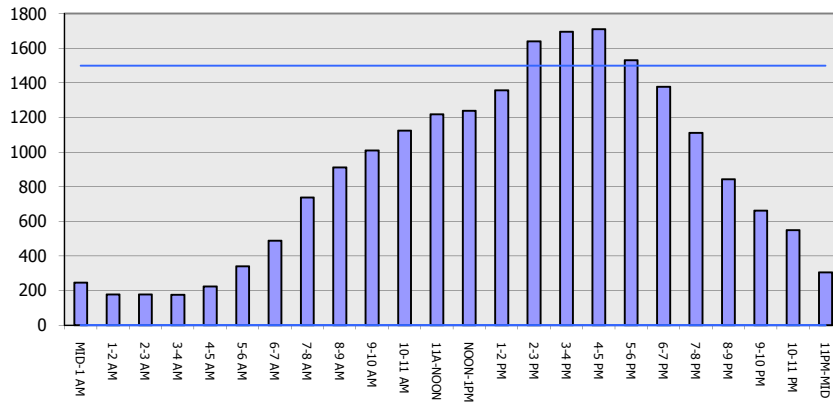
*Delays Exceeding 15 Minutes

**IH 90: USH 14/61 TO USH 53
NIGHTTIME CLOSURE
DIVERSION ROUTE: USH 53 TO USH 14/61**

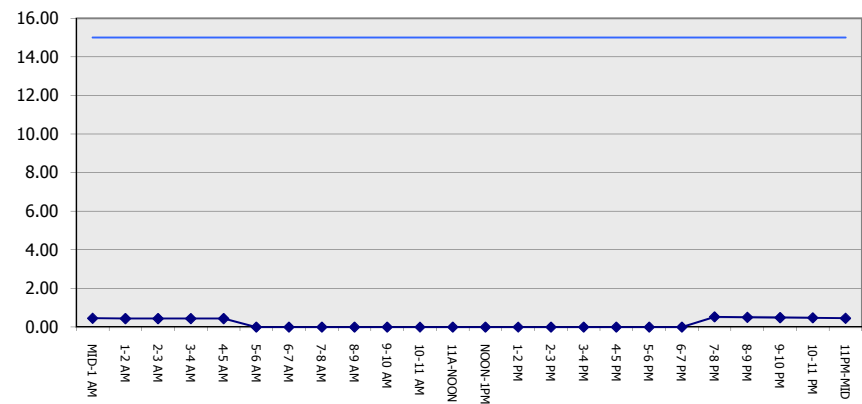
OCTOBER
Analyzed for 2009
Construction Season

GRAPHICAL REPRESENTATION OF TRAFFIC MODEL INPUT AND OUTPUT
FRIDAY WESTBOUND DIRECTION

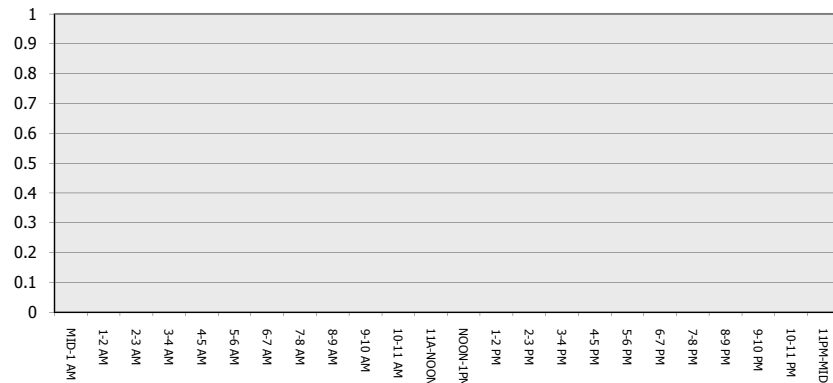
Main Route - Traffic Demand (Vehicles Per Hour)



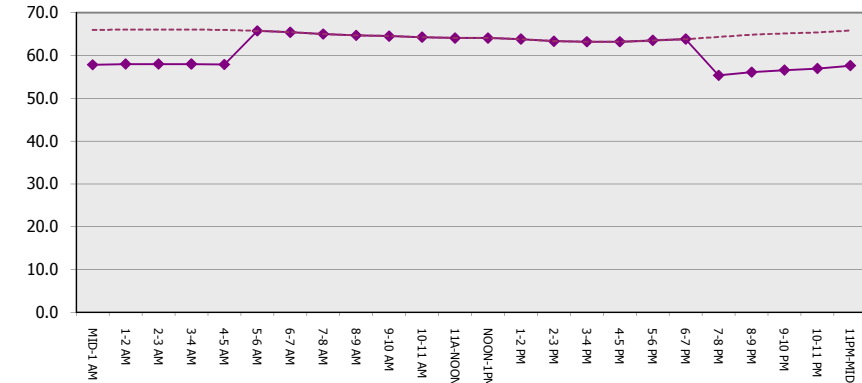
Main Route Average Delay Per Vehicle (Minutes)



Main Route - Average Queue Length (Vehicles)



Main Route - Average Speed (MPH)



IH 90: USH 14/61 TO USH 53 NIGHTTIME CLOSURE DIVERSION ROUTE: USH 53 TO USH 14/61	OCTOBER
	Analyzed for 2009 Construction Season

SUMMARY OF TRAFFIC MODEL OUTPUT

FRIDAY EASTBOUND DIRECTION

TIME OF DAY	FLOWS AND CAPACITY IN VEH/HR								AVERAGE SPEEDS IN MPH						
	MAIN		DIVERSION		SITE CAPA CITY	FLOW MAIN ROUTE	FLOW DIVER -TING	TOTAL DIVN FLOW	AV.DEL PER VEH (MINS)	AVERAGE QUEUE (VEH)	MAIN ROUTE		ALTERNATE ROUTE		
	DEMAND FLOW	PCT HEAVY	NORMAL FLOW	PCT HEAVY							WITHOUT WORK ZN	WITH WORK ZN	SITE	WITHOUT WORK ZN	WITH WORK ZN
MID-1 AM	183	0.0	156	7.0	1500	183	0	156	0.44	0	66.1	58.0	44.8	17.3	17.3
1-2 AM	154	0.0	133	7.0	1500	154	0	133	0.44	0	66.1	58.1	44.9	18.0	18.0
2-3 AM	175	0.0	149	7.0	1500	175	0	149	0.44	0	66.1	58.0	44.8	17.5	17.5
3-4 AM	198	0.0	169	7.0	1500	198	0	169	0.44	0	66.0	57.9	44.7	16.8	16.8
4-5 AM	245	0.0	210	7.0	1500	245	0	210	0.45	0	66.0	57.8	44.5	15.5	15.5
5-6 AM	327	0.0	280	7.0	OFF	327	0	280	0.00	0	65.8	65.8	65.8	13.2	13.2
6-7 AM	628	0.0	540	7.0	OFF	628	0	540	0.00	0	65.2	65.2	65.2	8.3	8.3
7-8 AM	793	0.0	682	7.0	OFF	793	0	682	0.00	0	64.9	64.9	64.9	7.1	7.1
8-9 AM	854	0.0	732	7.0	OFF	854	0	732+	0.00	0	64.8	64.8	64.8	6.7	6.7
9-10 AM	967	0.0	830	7.0	OFF	967	0	830+	0.00	0	64.6	64.6	64.6	6.0	6.0
10-11 AM	1146	0.0	984	7.0	OFF	1146	0	984+	0.00	0	64.3	64.3	64.3	5.6	5.6
11A-NOON	1259	0.0	1081	7.0	OFF	1259	0	1081+	0.00	0	64.0	64.0	64.0	5.6	5.6
NOON-1PM	1352	0.0	1161	7.0	OFF	1352	0	1161+	0.00	0	63.8	63.8	63.8	5.6	5.6
1-2 PM	1599	0.0	1373	7.0	OFF	1599	0	1373+	0.00	0	63.4	63.4	63.4	5.6	5.6
2-3 PM	1755	0.0	1507	7.0	OFF	1755	0	1507+	0.00	0	63.1	63.1	63.1	5.6	5.6
3-4 PM	1797	0.0	1542	7.0	OFF	1797	0	1542+	0.00	0	63.0	63.0	63.0	5.6	5.6
4-5 PM	1782	0.0	1529	7.0	OFF	1782	0	1529+	0.00	0	63.1	63.1	63.1	5.6	5.6
5-6 PM	1601	0.0	1374	7.0	OFF	1601	0	1374+	0.00	0	63.4	63.4	63.4	5.6	5.6
6-7 PM	1318	0.0	1131	7.0	OFF	1318	0	1131+	0.00	0	63.9	63.9	63.9	5.6	5.6
7-8 PM	932	0.0	800	7.0	1500	932	0	800+	0.51	0	64.6	55.8	41.9	6.2	6.2
8-9 PM	638	0.0	548	7.0	1500	638	0	548	0.48	0	65.2	56.7	43.0	8.2	8.2
9-10 PM	570	0.0	490	7.0	1500	570	0	490	0.48	0	65.3	56.9	43.2	8.6	8.6
10-11 PM	398	0.0	341	7.0	1500	398	0	341	0.46	0	65.6	57.4	43.9	11.2	11.2
11PM-MID	265	0.0	227	7.0	1500	265	0	227	0.45	0	65.9	57.8	44.4	15.0	15.0

"OFF" INDICATES NO ROAD WORK (ALL LANES OPEN TO TRAFFIC)

+ INDICATES DIVERSION FLOW EXCEEDS USER-SPECIFIED WARNING LIMIT

----- SITE BREAKDOWN DELAYS -----	
BREAKDOWN DURATION (MINS)	0
RANGE OF QUEUE DELAY - MIN	0.0
(VEH-H) MAX	0.0
RANGE OF DIVN DELAY - MIN	0.0
(VEH-H) MAX	0.0
AV BREAKDOWNS PER DAY	0.00
AV QUEUE DELAY/DAY (VEH-H)	0.0
AV DIVN DELAY/DAY (VEH-H)	0.0
AV TOTAL DELAY/DAY (VEH-H)	0.0

----- SITE ACCIDENT DELAYS -----	
ACCIDENT DURATION (MINS)	0
RANGE OF QUEUE DELAY - MIN	0.0
(VEH-H) MAX	0.0
RANGE OF DIVN DELAY - MIN	0.0
(VEH-H) MAX	0.0
AV ACCIDENTS PER DAY	0.00
AV QUEUE DELAY/DAY (VEH-H)	0.0
AV DIVN DELAY/DAY (VEH-H)	0.0
AV TOTAL DELAY/DAY (VEH-H)	0.0

AVERAGE ACCIDENT NUMBERS (PIA/DAY)	
MAIN ROUTE WITHOUT WORKS	0.0117
MAIN ROUTE WITH WORKS	0.0114
DIVERSION	0.1987

PIA: Personal Injury Accidents

IMPACTS ON ROAD USERS	
ROAD USER COSTS PER DAY (DOLLARS)	\$377
CONGESTED HOURS PER DAY*	0

*Delays Exceeding 15 Minutes

**IH 90: USH 14/61 TO USH 53
 NIGHTTIME CLOSURE
 DIVERSION ROUTE: USH 53 TO USH 14/61**

OCTOBER
 Analyzed for 2009
 Construction Season

GRAPHICAL REPRESENTATION OF TRAFFIC MODEL INPUT AND OUTPUT
FRIDAY EASTBOUND DIRECTION

