

<b>IH 90: USH 14/61 TO USH 53</b> <b>NIGHTTIME CLOSURE</b> <b>DIVERSION ROUTE: USH 53 TO USH 14/61</b>	<b>AUGUST</b>
	Analyzed for 2009 Construction Season

**SUMMARY OF TRAFFIC MODEL OUTPUT**

SUNDAY WESTBOUND DIRECTION

TIME OF DAY	FLOWS AND CAPACITY IN VEH/HR							AVERAGE SPEEDS IN MPH							
	MAIN ROUTE		ALTERNATE ROUTE		SITE CAPA CITY	FLOW MAIN ROUTE	FLOW DIVER -TING	TOTAL DIVN FLOW	AV.DEL PER VEH (MINS)	AVERAGE QUEUE (VEH)	MAIN ROUTE		ALTERNATE ROUTE		
	DEMAND FLOW	PCT HEAVY	NORMAL FLOW	PCT HEAVY							WITHOUT WORK ZN	WITH WORK ZN	SITE	WITHOUT WORK ZN	WITH WORK ZN
MID-1 AM	205	0.0	187	7.0	1500	205	0	187	0.44	0	66.0	57.9	44.6	16.3	16.3
1-2 AM	138	0.0	125	7.0	1500	138	0	125	0.44	0	66.1	58.1	45.0	18.3	18.3
2-3 AM	109	0.0	99	7.0	1500	109	0	99	0.43	0	66.2	58.2	45.1	19.1	19.1
3-4 AM	96	0.0	88	7.0	1500	96	0	88	0.43	0	66.2	58.2	45.1	19.5	19.5
4-5 AM	87	0.0	80	7.0	1500	87	0	80	0.43	0	66.2	58.3	45.1	19.7	19.7
5-6 AM	99	0.0	91	7.0	1500	99	0	91	0.43	0	66.2	58.2	45.1	19.4	19.4
6-7 AM	131	0.0	120	7.0	1500	131	0	120	0.44	0	66.1	58.2	45.0	18.4	18.4
7-8 AM	294	0.0	269	7.0	1500	294	0	269	0.45	0	65.8	57.7	44.3	13.6	13.6
8-9 AM	440	0.0	403	7.0	1500	440	0	403	0.47	0	65.6	57.3	43.7	9.3	9.3
9-10 AM	693	0.0	634	7.0	OFF	693	0	634	0.00	0	65.1	65.1	65.1	7.5	7.5
10-11 AM	1078	0.0	986	7.0	OFF	1078	0	986+	0.00	0	64.4	64.4	64.4	5.6	5.6
11A-NOON	1447	0.0	1324	7.0	OFF	1447	0	1324+	0.00	0	63.7	63.7	63.7	5.6	5.6
NOON-1PM	1503	0.0	1375	7.0	OFF	1503	0	1375+	0.00	0	63.6	63.6	63.6	5.6	5.6
1-2 PM	1604	0.0	1468	7.0	OFF	1604	0	1468+	0.00	0	63.4	63.4	63.4	5.6	5.6
2-3 PM	1688	0.0	1545	7.0	OFF	1688	0	1545+	0.00	0	63.2	63.2	63.2	5.6	5.6
3-4 PM	1751	0.0	1602	7.0	OFF	1751	0	1602+	0.00	0	63.1	63.1	63.1	5.6	5.6
4-5 PM	1730	0.0	1582	7.0	OFF	1730	0	1582+	0.00	0	63.2	63.2	63.2	5.6	5.6
5-6 PM	1546	0.0	1414	7.0	OFF	1546	0	1414+	0.00	0	63.5	63.5	63.5	5.6	5.6
6-7 PM	1346	0.0	1231	7.0	OFF	1346	0	1231+	0.00	0	63.9	63.9	63.9	5.6	5.6
7-8 PM	1137	0.0	1041	7.0	1500	1137	0	1041+	0.56	0	64.3	54.9	40.6	5.6	5.6
8-9 PM	865	0.0	791	7.0	1500	865	0	791+	0.51	0	64.8	56.0	42.2	6.3	6.3
9-10 PM	697	0.0	638	7.0	1500	697	0	638	0.49	0	65.1	56.5	42.8	7.5	7.5
10-11 PM	459	0.0	419	7.0	1500	459	0	419	0.47	0	65.5	57.2	43.7	9.2	9.2
11PM-MID	283	0.0	258	7.0	1500	283	0	258	0.45	0	65.9	57.7	44.3	13.9	13.9

"OFF" INDICATES NO ROAD WORK (ALL LANES OPEN TO TRAFFIC)

+ INDICATES DIVERSION FLOW EXCEEDS USER-SPECIFIED WARNING LIMIT

*----- SITE BREAKDOWN DELAYS -----*	
BREAKDOWN DURATION (MINS)	0
RANGE OF QUEUE DELAY - MIN	0.0
(VEH-H) MAX	0.0
RANGE OF DIVN DELAY - MIN	0.0
(VEH-H) MAX	0.0
AV BREAKDOWNS PER DAY	0.00
AV QUEUE DELAY/DAY (VEH-H)	0.0
AV DIVN DELAY/DAY (VEH-H)	0.0
AV TOTAL DELAY/DAY (VEH-H)	0.0

*----- SITE ACCIDENT DELAYS -----*	
ACCIDENT DURATION (MINS)	0
RANGE OF QUEUE DELAY - MIN	0.0
(VEH-H) MAX	0.0
RANGE OF DIVN DELAY - MIN	0.0
(VEH-H) MAX	0.0
AV ACCIDENTS PER DAY	0.00
AV QUEUE DELAY/DAY (VEH-H)	0.0
AV DIVN DELAY/DAY (VEH-H)	0.0
AV TOTAL DELAY/DAY (VEH-H)	0.0

AVERAGE ACCIDENT NUMBERS (PIA/DAY)	
MAIN ROUTE WITHOUT WORKS	0.0108
MAIN ROUTE WITH WORKS	0.0105
DIVERSION	0.1966

PIA: Personal Injury Accidents

IMPACTS ON ROAD USERS	
ROAD USER COSTS PER DAY ( DOLLARS)	\$590
CONGESTED HOURS PER DAY*	0

\*Delays Exceeding 15 Minutes

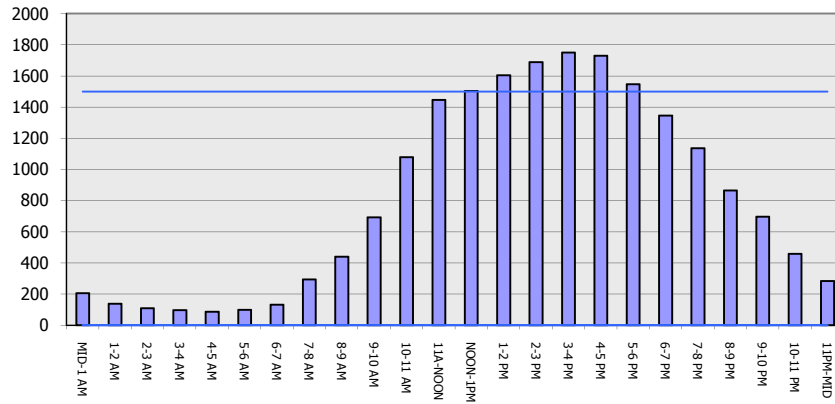
**IH 90: USH 14/61 TO USH 53  
NIGHTTIME CLOSURE  
DIVERSION ROUTE: USH 53 TO USH 14/61**

**AUGUST**  
Analyzed for 2009  
Construction Season

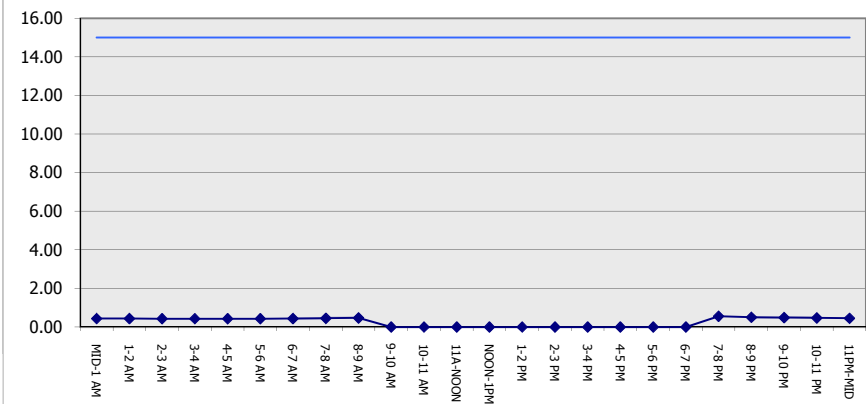
**GRAPHICAL REPRESENTATION OF TRAFFIC MODEL INPUT AND OUTPUT**

**SUNDAY WESTBOUND DIRECTION**

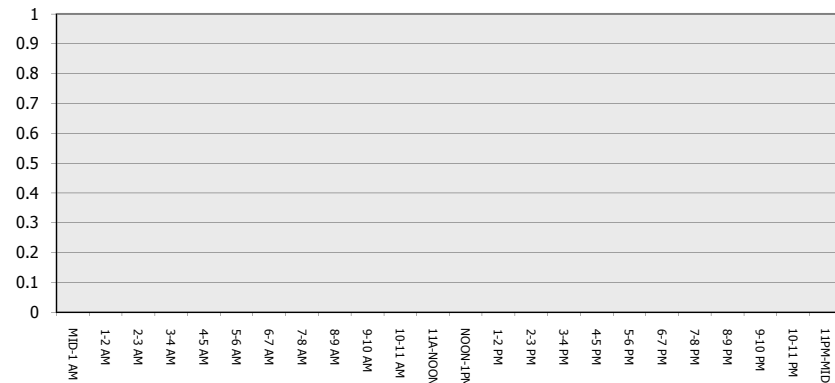
**Main Route - Traffic Demand (Vehicles Per Hour)**



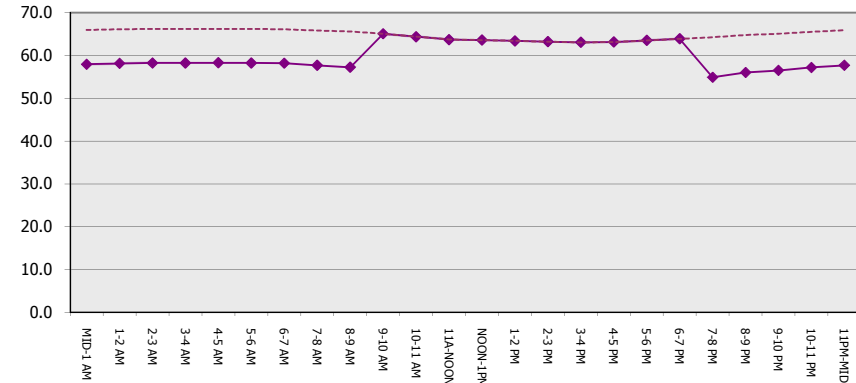
**Main Route Average Delay Per Vehicle (Minutes)**



**Main Route - Average Queue Length (Vehicles)**



**Main Route - Average Speed (MPH)**



<b>IH 90: USH 14/61 TO USH 53</b> <b>NIGHTTIME CLOSURE</b> <b>DIVERSION ROUTE: USH 53 TO USH 14/61</b>	<b>AUGUST</b>
	Analyzed for 2009 Construction Season

**SUMMARY OF TRAFFIC MODEL OUTPUT**

SUNDAY EASTBOUND DIRECTION

TIME OF DAY	FLOWS AND CAPACITY IN VEH/HR							TOTAL DIVN FLOW	AV.DEL PER VEH (MINS)	AVERAGE QUEUE (VEH)	AVERAGE SPEEDS IN MPH				
	MAIN		DIVERSION		SITE CAPA CITY	FLOW MAIN ROUTE	FLOW DIVER -TING				MAIN ROUTE		SITE	ALTERNATE ROUTE	
	DEMAND FLOW	PCT HEAVY	NORMAL FLOW	PCT HEAVY							WITHOUT WORK ZN	WITH WORK ZN		WITHOUT WORK ZN	WITH WORK ZN
MID-1 AM	155	0.0	143	7.0	1500	155	0	143	0.44	0	66.1	58.1	44.8	17.7	17.7
1-2 AM	122	0.0	111	7.0	1500	122	0	111	0.43	0	66.1	58.2	45.0	18.8	18.8
2-3 AM	95	0.0	88	7.0	1500	95	0	88	0.43	0	66.2	58.2	45.1	19.5	19.5
3-4 AM	120	0.0	109	7.0	1500	120	0	109	0.43	0	66.1	58.2	45.0	18.8	18.8
4-5 AM	123	0.0	112	7.0	1500	123	0	112	0.43	0	66.1	58.2	45.0	18.7	18.7
5-6 AM	146	0.0	134	7.0	1500	146	0	134	0.44	0	66.1	58.1	44.9	18.0	18.0
6-7 AM	216	0.0	198	7.0	1500	216	0	198	0.44	0	66.0	57.9	44.6	15.9	15.9
7-8 AM	370	0.0	338	7.0	1500	370	0	338	0.46	0	65.7	57.4	44.0	11.3	11.3
8-9 AM	618	0.0	565	7.0	1500	618	0	565	0.48	0	65.2	56.7	43.0	8.0	8.0
9-10 AM	956	0.0	875	7.0	OFF	956	0	875+	0.00	0	64.6	64.6	64.6	5.7	5.7
10-11 AM	1301	0.0	1190	7.0	OFF	1301	0	1190+	0.00	0	64.0	64.0	64.0	5.6	5.6
11A-NOON	1514	0.0	1385	7.0	OFF	1514	0	1385+	0.00	0	63.6	63.6	63.6	5.6	5.6
NOON-1PM	1603	0.0	1467	7.0	OFF	1603	0	1467+	0.00	0	63.4	63.4	63.4	5.6	5.6
1-2 PM	1709	0.0	1563	7.0	OFF	1709	0	1563+	0.00	0	63.2	63.2	63.2	5.6	5.6
2-3 PM	1705	0.0	1560	7.0	OFF	1705	0	1560+	0.00	0	63.2	63.2	63.2	5.6	5.6
3-4 PM	1643	0.0	1503	7.0	OFF	1643	0	1503+	0.00	0	63.3	63.3	63.3	5.6	5.6
4-5 PM	1572	0.0	1438	7.0	OFF	1572	0	1438+	0.00	0	63.5	63.5	63.5	5.6	5.6
5-6 PM	1368	0.0	1251	7.0	OFF	1368	0	1251+	0.00	0	63.8	63.8	63.8	5.6	5.6
6-7 PM	1194	0.0	1093	7.0	OFF	1194	0	1093+	0.00	0	64.1	64.1	64.1	5.6	5.6
7-8 PM	909	0.0	832	7.0	1500	909	0	832+	0.51	0	64.7	55.9	42.0	6.0	6.0
8-9 PM	739	0.0	676	7.0	1500	739	0	676	0.49	0	65.0	56.4	42.6	7.2	7.2
9-10 PM	536	0.0	490	7.0	1500	536	0	490	0.47	0	65.4	56.9	43.3	8.6	8.6
10-11 PM	323	0.0	295	7.0	1500	323	0	295	0.45	0	65.8	57.6	44.2	12.7	12.7
11PM-MID	269	0.0	246	7.0	1500	269	0	246	0.45	0	65.9	57.8	44.4	14.3	14.3

"OFF" INDICATES NO ROAD WORK (ALL LANES OPEN TO TRAFFIC)

+ INDICATES DIVERSION FLOW EXCEEDS USER-SPECIFIED WARNING LIMIT

*----- SITE BREAKDOWN DELAYS -----*	
BREAKDOWN DURATION (MINS)	0
RANGE OF QUEUE DELAY - MIN	0.0
(VEH-H) MAX	0.0
RANGE OF DIVN DELAY - MIN	0.0
(VEH-H) MAX	0.0
AV BREAKDOWNS PER DAY	0.00
AV QUEUE DELAY/DAY (VEH-H)	0.0
AV DIVN DELAY/DAY (VEH-H)	0.0
AV TOTAL DELAY/DAY (VEH-H)	0.0

*----- SITE ACCIDENT DELAYS -----*	
ACCIDENT DURATION (MINS)	0
RANGE OF QUEUE DELAY - MIN	0.0
(VEH-H) MAX	0.0
RANGE OF DIVN DELAY - MIN	0.0
(VEH-H) MAX	0.0
AV ACCIDENTS PER DAY	0.00
AV QUEUE DELAY/DAY (VEH-H)	0.0
AV DIVN DELAY/DAY (VEH-H)	0.0
AV TOTAL DELAY/DAY (VEH-H)	0.0

AVERAGE ACCIDENT NUMBERS (PIA/DAY)	
MAIN ROUTE WITHOUT WORKS	0.0107
MAIN ROUTE WITH WORKS	0.0104
DIVERSION	0.1953

PIA: Personal Injury Accidents

IMPACTS ON ROAD USERS	
ROAD USER COSTS PER DAY ( DOLLARS)	\$533
CONGESTED HOURS PER DAY*	0

\*Delays Exceeding 15 Minutes

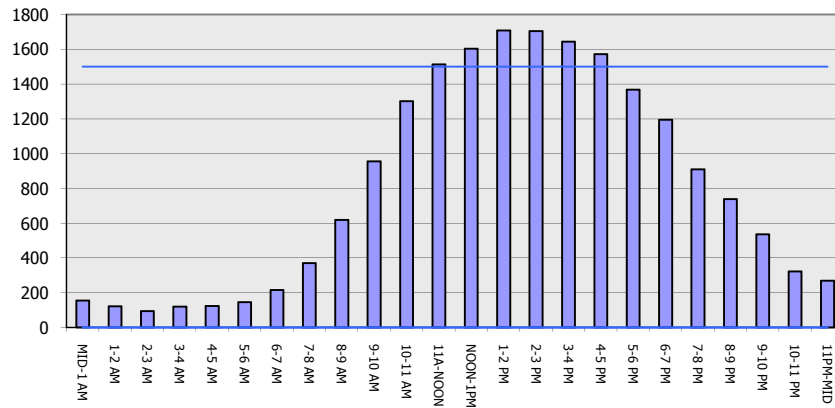
**IH 90: USH 14/61 TO USH 53  
NIGHTTIME CLOSURE  
DIVERSION ROUTE: USH 53 TO USH 14/61**

**AUGUST**  
Analyzed for 2009  
Construction Season

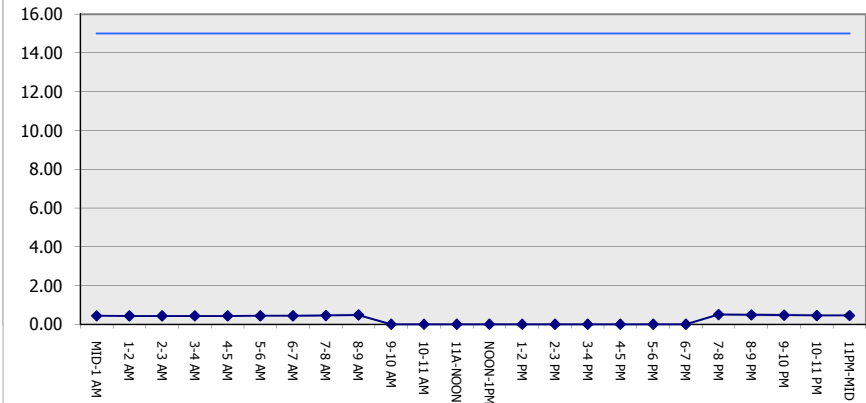
**GRAPHICAL REPRESENTATION OF TRAFFIC MODEL INPUT AND OUTPUT**

**SUNDAY EASTBOUND DIRECTION**

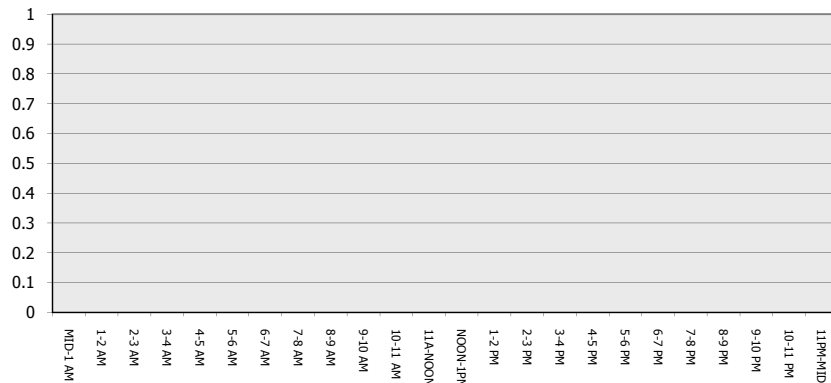
**Main Route - Traffic Demand (Vehicles Per Hour)**



**Main Route Average Delay Per Vehicle (Minutes)**



**Main Route - Average Queue Length (Vehicles)**



**Main Route - Average Speed (MPH)**

