

IH 90: USH 14/61 TO USH 53 NIGHTTIME CLOSURE DIVERSION ROUTE: USH 53 TO USH 14/61	AUGUST
	Analyzed for 2009 Construction Season

SUMMARY OF TRAFFIC MODEL OUTPUT

FRIDAY WESTBOUND DIRECTION

TIME OF DAY	FLOWS AND CAPACITY IN VEH/HR								AVERAGE SPEEDS IN MPH						
	MAIN ROUTE		ALTERNATE ROUTE		SITE CAPA CITY	FLOW MAIN ROUTE	FLOW DIVER -TING	TOTAL DIVN FLOW	AV.DEL PER VEH (MINS)	AVERAGE QUEUE (VEH)	MAIN ROUTE		ALTERNATE ROUTE		
	DEMAND FLOW	PCT HEAVY	NORMAL FLOW	PCT HEAVY							WITHOUT WORK ZN	WITH WORK ZN	SITE	WITHOUT WORK ZN	WITH WORK ZN
MID-1 AM	256	0.0	234	7.0	1500	256	0	234	0.45	0	65.9	57.8	44.5	14.7	14.7
1-2 AM	194	0.0	177	7.0	1500	194	0	177	0.44	0	66.0	58.0	44.7	16.6	16.6
2-3 AM	192	0.0	176	7.0	1500	192	0	176	0.44	0	66.0	58.0	44.7	16.6	16.6
3-4 AM	184	0.0	169	7.0	1500	184	0	169	0.44	0	66.0	58.0	44.8	16.8	16.8
4-5 AM	239	0.0	219	7.0	1500	239	0	219	0.45	0	66.0	57.8	44.5	15.2	15.2
5-6 AM	355	0.0	324	7.0	OFF	355	0	324	0.00	0	65.7	65.7	65.7	11.8	11.8
6-7 AM	499	0.0	456	7.0	OFF	499	0	456	0.00	0	65.5	65.5	65.5	8.9	8.9
7-8 AM	725	0.0	664	7.0	OFF	725	0	664	0.00	0	65.0	65.0	65.0	7.3	7.3
8-9 AM	896	0.0	820	7.0	OFF	896	0	820+	0.00	0	64.7	64.7	64.7	6.1	6.1
9-10 AM	1141	0.0	1044	7.0	OFF	1141	0	1044+	0.00	0	64.3	64.3	64.3	5.6	5.6
10-11 AM	1296	0.0	1185	7.0	OFF	1296	0	1185+	0.00	0	64.0	64.0	64.0	5.6	5.6
11A-NOON	1391	0.0	1273	7.0	OFF	1391	0	1273+	0.00	0	63.8	63.8	63.8	5.6	5.6
NOON-1PM	1454	0.0	1330	7.0	OFF	1454	0	1330+	0.00	0	63.7	63.7	63.7	5.6	5.6
1-2 PM	1529	0.0	1398	7.0	OFF	1529	0	1398+	0.00	0	63.5	63.5	63.5	5.6	5.6
2-3 PM	1664	0.0	1522	7.0	OFF	1664	0	1522+	0.00	0	63.3	63.3	63.3	5.6	5.6
3-4 PM	1750	0.0	1601	7.0	OFF	1750	0	1601+	0.00	0	63.1	63.1	63.1	5.6	5.6
4-5 PM	1782	0.0	1630	7.0	OFF	1782	0	1630+	0.00	0	63.1	63.1	63.1	5.6	5.6
5-6 PM	1523	0.0	1394	7.0	OFF	1523	0	1394+	0.00	0	63.5	63.5	63.5	5.6	5.6
6-7 PM	1305	0.0	1194	7.0	OFF	1305	0	1194+	0.00	0	64.0	64.0	64.0	5.6	5.6
7-8 PM	1234	0.0	1129	7.0	1500	1234	0	1129+	0.68	0	64.1	53.0	37.4	5.6	5.6
8-9 PM	996	0.0	911	7.0	1500	996	0	911+	0.52	0	64.5	55.6	41.7	5.6	5.6
9-10 PM	748	0.0	684	7.0	1500	748	0	684	0.49	0	65.0	56.3	42.6	7.1	7.1
10-11 PM	537	0.0	491	7.0	1500	537	0	491	0.47	0	65.4	56.9	43.3	8.6	8.6
11PM-MID	404	0.0	369	7.0	1500	404	0	369	0.46	0	65.6	57.4	43.9	10.3	10.3

"OFF" INDICATES NO ROAD WORK (ALL LANES OPEN TO TRAFFIC)

+ INDICATES DIVERSION FLOW EXCEEDS USER-SPECIFIED WARNING LIMIT

----- SITE BREAKDOWN DELAYS -----	
BREAKDOWN DURATION (MINS)	0
RANGE OF QUEUE DELAY - MIN	0.0
(VEH-H) MAX	0.0
RANGE OF DIVN DELAY - MIN	0.0
(VEH-H) MAX	0.0
AV BREAKDOWNS PER DAY	0.00
AV QUEUE DELAY/DAY (VEH-H)	0.0
AV DIVN DELAY/DAY (VEH-H)	0.0
AV TOTAL DELAY/DAY (VEH-H)	0.0

----- SITE ACCIDENT DELAYS -----	
ACCIDENT DURATION (MINS)	0
RANGE OF QUEUE DELAY - MIN	0.0
(VEH-H) MAX	0.0
RANGE OF DIVN DELAY - MIN	0.0
(VEH-H) MAX	0.0
AV ACCIDENTS PER DAY	0.00
AV QUEUE DELAY/DAY (VEH-H)	0.0
AV DIVN DELAY/DAY (VEH-H)	0.0
AV TOTAL DELAY/DAY (VEH-H)	0.0

AVERAGE ACCIDENT NUMBERS (PIA/DAY)	
MAIN ROUTE WITHOUT WORKS	0.0124
MAIN ROUTE WITH WORKS	0.0121
DIVERSION	0.2255

PIA: Personal Injury Accidents

IMPACTS ON ROAD USERS	
ROAD USER COSTS PER DAY (DOLLARS)	\$565
CONGESTED HOURS PER DAY*	0

*Delays Exceeding 15 Minutes

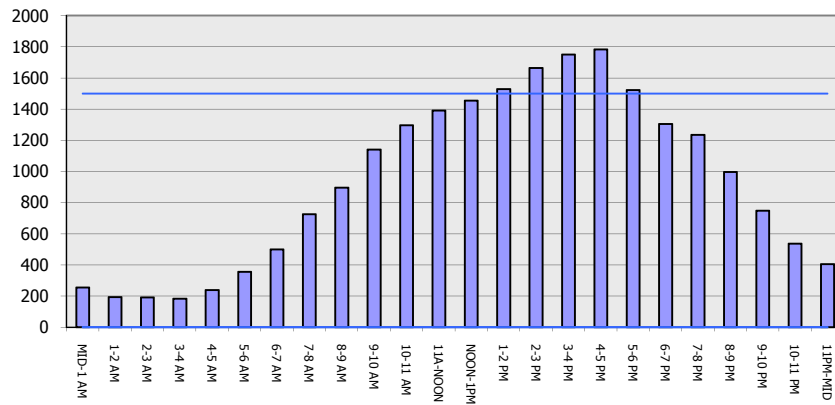
**IH 90: USH 14/61 TO USH 53
NIGHTTIME CLOSURE
DIVERSION ROUTE: USH 53 TO USH 14/61**

AUGUST
Analyzed for 2009
Construction Season

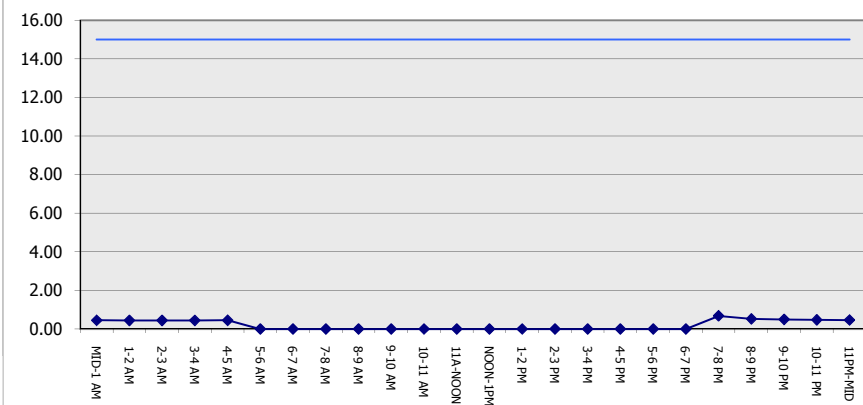
GRAPHICAL REPRESENTATION OF TRAFFIC MODEL INPUT AND OUTPUT

FRIDAY WESTBOUND DIRECTION

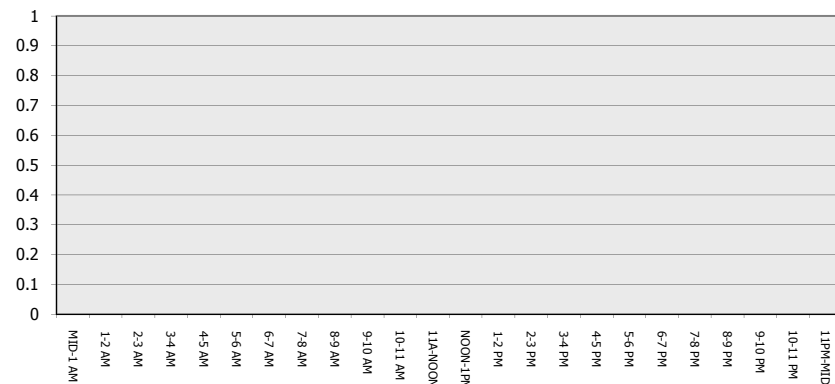
Main Route - Traffic Demand (Vehicles Per Hour)



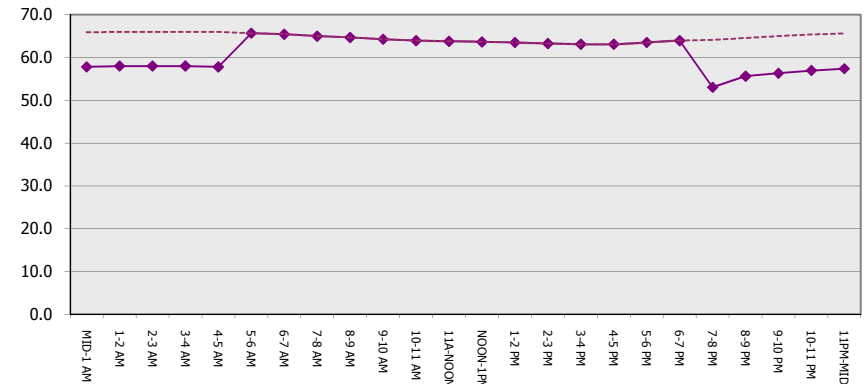
Main Route Average Delay Per Vehicle (Minutes)



Main Route - Average Queue Length (Vehicles)



Main Route - Average Speed (MPH)



IH 90: USH 14/61 TO USH 53 NIGHTTIME CLOSURE DIVERSION ROUTE: USH 53 TO USH 14/61	AUGUST
	Analyzed for 2009 Construction Season

SUMMARY OF TRAFFIC MODEL OUTPUT

FRIDAY EASTBOUND DIRECTION

TIME OF DAY	FLOWS AND CAPACITY IN VEH/HR								TOTAL DIVN FLOW	AV.DEL PER VEH (MINS)	AVERAGE QUEUE (VEH)	AVERAGE SPEEDS IN MPH				
	MAIN		DIVERSION		SITE CAPA CITY	FLOW MAIN ROUTE	FLOW DIVER -TING	MAIN ROUTE				SITE	ALTERNATE ROUTE			
	DEMAND FLOW	PCT HEAVY	NORMAL FLOW	PCT HEAVY				WITHOUT WORK ZN					WITH WORK ZN	WITHOUT WORK ZN	WITH WORK ZN	
MID-1 AM	198	0.0	181	7.0	1500	198	0	181	0.44	0	66.0	57.9	44.7	16.5	16.5	
1-2 AM	150	0.0	137	7.0	1500	150	0	137	0.44	0	66.1	58.1	44.9	17.9	17.9	
2-3 AM	178	0.0	162	7.0	1500	178	0	162	0.44	0	66.1	58.0	44.8	17.1	17.1	
3-4 AM	215	0.0	197	7.0	1500	215	0	197	0.44	0	66.0	57.9	44.6	16.0	16.0	
4-5 AM	241	0.0	221	7.0	1500	241	0	221	0.45	0	66.0	57.8	44.5	15.2	15.2	
5-6 AM	389	0.0	356	7.0	OFF	389	0	356	0.00	0	65.6	65.6	65.6	10.7	10.7	
6-7 AM	612	0.0	560	7.0	OFF	612	0	560	0.00	0	65.3	65.3	65.3	8.1	8.1	
7-8 AM	821	0.0	750	7.0	OFF	821	0	750+	0.00	0	64.8	64.8	64.8	6.6	6.6	
8-9 AM	917	0.0	839	7.0	OFF	917	0	839+	0.00	0	64.6	64.6	64.6	5.9	5.9	
9-10 AM	1132	0.0	1036	7.0	OFF	1132	0	1036+	0.00	0	64.3	64.3	64.3	5.6	5.6	
10-11 AM	1313	0.0	1201	7.0	OFF	1313	0	1201+	0.00	0	64.0	64.0	64.0	5.6	5.6	
11A-NOON	1419	0.0	1298	7.0	OFF	1419	0	1298+	0.00	0	63.7	63.7	63.7	5.6	5.6	
NOON-1PM	1473	0.0	1347	7.0	OFF	1473	0	1347+	0.00	0	63.7	63.7	63.7	5.6	5.6	
1-2 PM	1650	0.0	1509	7.0	OFF	1650	0	1509+	0.00	0	63.3	63.3	63.3	5.6	5.6	
2-3 PM	1753	0.0	1603	7.0	OFF	1753	0	1603+	0.00	0	63.1	63.1	63.1	5.6	5.6	
3-4 PM	1777	0.0	1626	7.0	OFF	1777	0	1626+	0.00	0	63.1	63.1	63.1	5.6	5.6	
4-5 PM	1739	0.0	1590	7.0	OFF	1739	0	1590+	0.00	0	63.2	63.2	63.2	5.6	5.6	
5-6 PM	1654	0.0	1514	7.0	OFF	1654	0	1514+	0.00	0	63.3	63.3	63.3	5.6	5.6	
6-7 PM	1425	0.0	1304	7.0	OFF	1425	0	1304+	0.00	0	63.7	63.7	63.7	5.6	5.6	
7-8 PM	1091	0.0	998	7.0	1500	1091	0	998+	0.53	0	64.3	55.4	41.4	5.6	5.6	
8-9 PM	845	0.0	773	7.0	1500	845	0	773+	0.50	0	64.8	56.1	42.2	6.4	6.4	
9-10 PM	631	0.0	577	7.0	1500	631	0	577	0.48	0	65.2	56.7	43.0	7.9	7.9	
10-11 PM	489	0.0	448	7.0	1500	489	0	448	0.47	0	65.5	57.1	43.5	8.9	8.9	
11PM-MID	328	0.0	299	7.0	1500	328	0	299	0.45	0	65.8	57.6	44.2	12.6	12.6	

"OFF" INDICATES NO ROAD WORK (ALL LANES OPEN TO TRAFFIC)

+ INDICATES DIVERSION FLOW EXCEEDS USER-SPECIFIED WARNING LIMIT

----- SITE BREAKDOWN DELAYS -----	
BREAKDOWN DURATION (MINS)	0
RANGE OF QUEUE DELAY - MIN	0.0
(VEH-H) MAX	0.0
RANGE OF DIVN DELAY - MIN	0.0
(VEH-H) MAX	0.0
AV BREAKDOWNS PER DAY	0.00
AV QUEUE DELAY/DAY (VEH-H)	0.0
AV DIVN DELAY/DAY (VEH-H)	0.0
AV TOTAL DELAY/DAY (VEH-H)	0.0

----- SITE ACCIDENT DELAYS -----	
ACCIDENT DURATION (MINS)	0
RANGE OF QUEUE DELAY - MIN	0.0
(VEH-H) MAX	0.0
RANGE OF DIVN DELAY - MIN	0.0
(VEH-H) MAX	0.0
AV ACCIDENTS PER DAY	0.00
AV QUEUE DELAY/DAY (VEH-H)	0.0
AV DIVN DELAY/DAY (VEH-H)	0.0
AV TOTAL DELAY/DAY (VEH-H)	0.0

AVERAGE ACCIDENT NUMBERS (PIA/DAY)	
MAIN ROUTE WITHOUT WORKS	0.0125
MAIN ROUTE WITH WORKS	0.0122
DIVERSION	0.2270

PIA: Personal Injury Accidents

IMPACTS ON ROAD USERS	
ROAD USER COSTS PER DAY (DOLLARS)	\$453
CONGESTED HOURS PER DAY*	0

*Delays Exceeding 15 Minutes

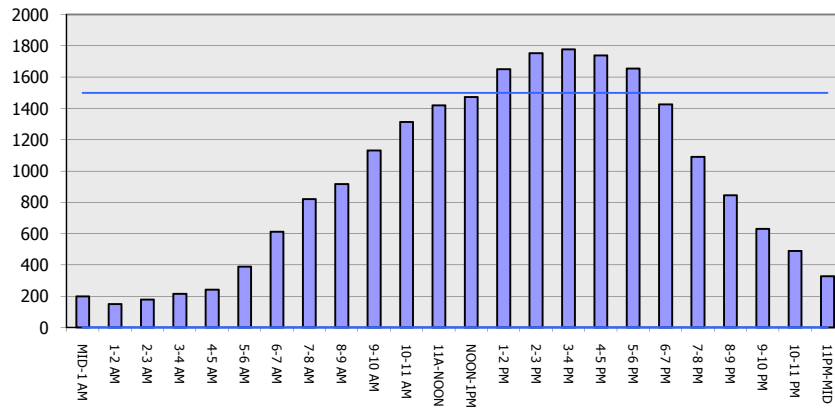
**IH 90: USH 14/61 TO USH 53
NIGHTTIME CLOSURE
DIVERSION ROUTE: USH 53 TO USH 14/61**

AUGUST
Analyzed for 2009
Construction Season

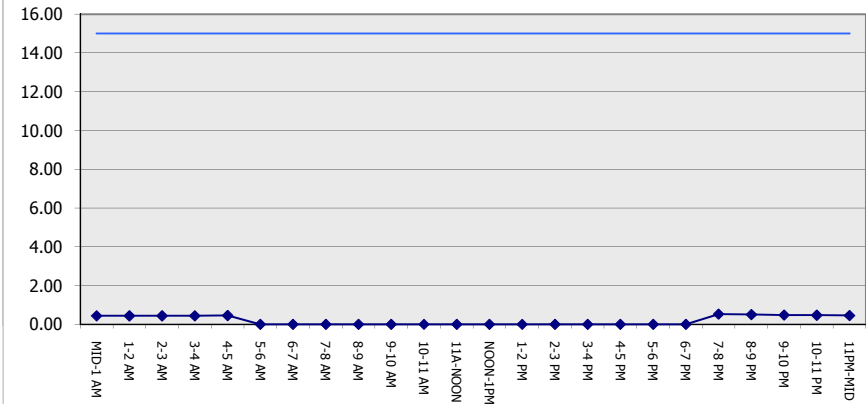
GRAPHICAL REPRESENTATION OF TRAFFIC MODEL INPUT AND OUTPUT

FRIDAY EASTBOUND DIRECTION

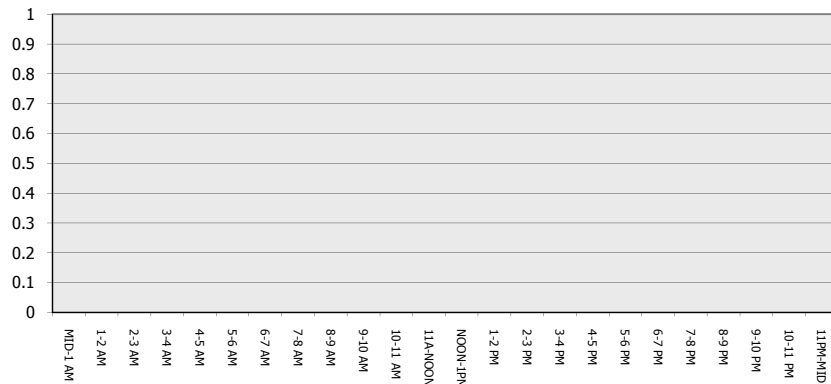
Main Route - Traffic Demand (Vehicles Per Hour)



Main Route Average Delay Per Vehicle (Minutes)



Main Route - Average Queue Length (Vehicles)



Main Route - Average Speed (MPH)

