

<b>IH 94: STH 73 TO STH 26 (DANE AND JEFFERSON COUNTIES)</b> <b>NIGHTTIME CLOSURE</b> <b>DIVERSION ROUTE: STH 73 - USH 12 - USH 18 - STH 89</b>	<b>MAY</b>
	Analyzed for 2009 Construction Season

**SUMMARY OF TRAFFIC MODEL OUTPUT**

**SUNDAY WESTBOUND DIRECTION**

TIME OF DAY	FLOWS AND CAPACITY IN VEH/HR						AVERAGE SPEEDS IN MPH								
	MAIN ROUTE		ALTERNATE ROUTE		SITE CAPA CITY	FLOW MAIN ROUTE	FLOW DIVER -TING	TOTAL DIVN FLOW	AV.DEL PER VEH (MINS)	AVERAGE QUEUE (VEH)	MAIN ROUTE		ALTERNATE ROUTE		
	DEMAND FLOW	PCT HEAVY	NORMAL FLOW	PCT HEAVY							WITHOUT WORK ZN	WITH WORK ZN	SITE	WITHOUT WORK ZN	WITH WORK ZN
MID-1 AM	183	0.0	24	0.0	1500	183	0	24	0.44	0	66.1	62.7	44.8	34.5	34.5
1-2 AM	104	0.0	14	0.0	1500	104	0	14	0.43	0	66.2	62.9	45.1	34.7	34.7
2-3 AM	77	0.0	10	0.0	1500	77	0	10	0.43	0	66.3	63.0	45.2	34.7	34.7
3-4 AM	71	0.0	9	0.0	1500	71	0	9	0.43	0	66.3	63.0	45.2	34.7	34.7
4-5 AM	80	0.0	10	0.0	1500	80	0	10	0.43	0	66.3	63.0	45.1	34.7	34.7
5-6 AM	173	0.0	23	0.0	1500	173	0	23	0.44	0	66.1	62.7	44.8	34.5	34.5
6-7 AM	281	0.0	38	0.0	1500	281	0	38	0.45	0	65.9	62.5	44.3	34.3	34.3
7-8 AM	510	0.0	68	0.0	1500	510	0	68	0.47	0	65.5	61.9	43.5	34.0	34.0
8-9 AM	778	0.0	104	0.0	1500	778	0	104	0.50	0	65.0	61.3	42.5	33.7	33.7
9-10 AM	1128	0.0	151	0.0	OFF	1128	0	151	0.00	0	64.3	64.3	64.3	33.1	33.1
10-11 AM	1410	0.0	187	0.0	OFF	1410	0	187	0.00	0	63.8	63.8	63.8	32.7	32.7
11A-NOON	1555	0.0	207	0.0	OFF	1555	0	207	0.00	0	63.5	63.5	63.5	32.5	32.5
NOON-1PM	1451	0.0	194	0.0	OFF	1451	0	194	0.00	0	63.7	63.7	63.7	32.7	32.7
1-2 PM	1384	0.0	184	0.0	OFF	1384	0	184	0.00	0	63.8	63.8	63.8	32.7	32.7
2-3 PM	1315	0.0	175	0.0	OFF	1315	0	175	0.00	0	64.0	64.0	64.0	32.9	32.9
3-4 PM	1308	0.0	174	0.0	OFF	1308	0	174	0.00	0	64.0	64.0	64.0	32.9	32.9
4-5 PM	1509	0.0	201	0.0	OFF	1509	0	201	0.00	0	63.6	63.6	63.6	32.6	32.6
5-6 PM	1562	0.0	208	0.0	OFF	1562	0	208	0.00	0	63.5	63.5	63.5	32.5	32.5
6-7 PM	1068	0.0	142	0.0	OFF	1068	0	142	0.00	0	64.4	64.4	64.4	33.2	33.2
7-8 PM	899	0.0	119	0.0	1500	899	0	119	0.51	0	64.7	61.0	42.0	33.5	33.5
8-9 PM	704	0.0	94	0.0	1500	704	0	94	0.49	0	65.1	61.5	42.7	33.7	33.7
9-10 PM	470	0.0	63	0.0	1500	470	0	63	0.47	0	65.5	62.0	43.6	34.1	34.1
10-11 PM	299	0.0	40	0.0	1500	299	0	40	0.45	0	65.8	62.4	44.3	34.3	34.3
11PM-MID	200	0.0	26	0.0	1500	200	0	26	0.44	0	66.0	62.7	44.7	34.5	34.5

"OFF" INDICATES NO ROAD WORK (ALL LANES OPEN TO TRAFFIC)

*----- SITE BREAKDOWN DELAYS -----*	
BREAKDOWN DURATION (MINS)	0
RANGE OF QUEUE DELAY - MIN	0.0
(VEH-H) MAX	0.0
RANGE OF DIVN DELAY - MIN	0.0
(VEH-H) MAX	0.0
AV BREAKDOWNS PER DAY	0.00
AV QUEUE DELAY/DAY (VEH-H)	0.0
AV DIVN DELAY/DAY (VEH-H)	0.0
AV TOTAL DELAY/DAY (VEH-H)	0.0

*----- SITE ACCIDENT DELAYS -----*	
ACCIDENT DURATION (MINS)	0
RANGE OF QUEUE DELAY - MIN	0.0
(VEH-H) MAX	0.0
RANGE OF DIVN DELAY - MIN	0.0
(VEH-H) MAX	0.0
AV ACCIDENTS PER DAY	0.00
AV QUEUE DELAY/DAY (VEH-H)	0.0
AV DIVN DELAY/DAY (VEH-H)	0.0
AV TOTAL DELAY/DAY (VEH-H)	0.0

AVERAGE ACCIDENT NUMBERS (PIA/DAY)	
MAIN ROUTE WITHOUT WORKS	0.0268
MAIN ROUTE WITH WORKS	0.0265
DIVERSION	0.0730

PIA: Personal Injury Accidents

IMPACTS ON ROAD USERS	
ROAD USER COSTS PER DAY ( DOLLARS)	\$556
CONGESTED HOURS PER DAY*	0

\*Delays Exceeding 15 Minutes

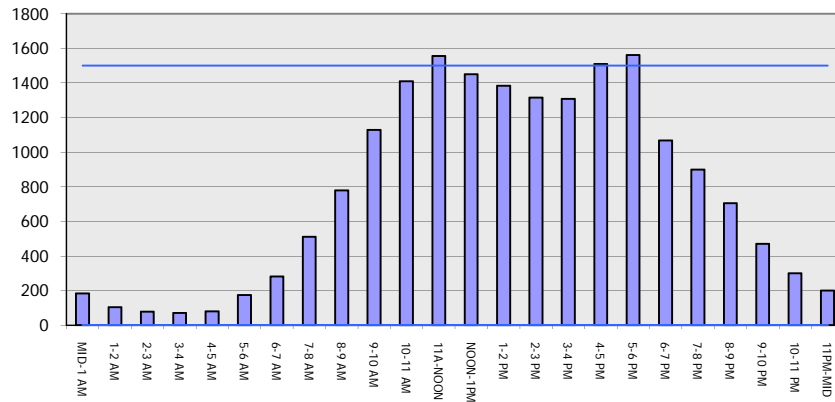
**IH 94: STH 73 TO STH 26 (DANE AND JEFFERSON COUNTIES)**  
**NIGHTTIME CLOSURE**  
**DIVERSION ROUTE: STH 73 - USH 12 - USH 18 - STH 89**

**MAY**  
 Analyzed for 2009  
 Construction Season

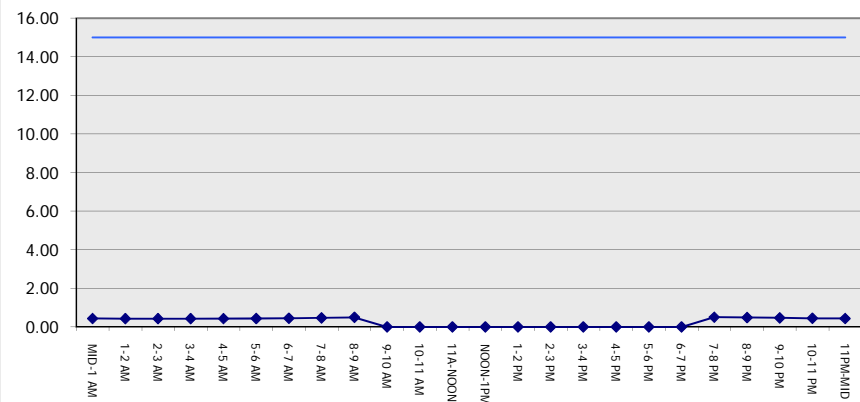
**GRAPHICAL REPRESENTATION OF TRAFFIC MODEL INPUT AND OUTPUT**

**SUNDAY WESTBOUND DIRECTION**

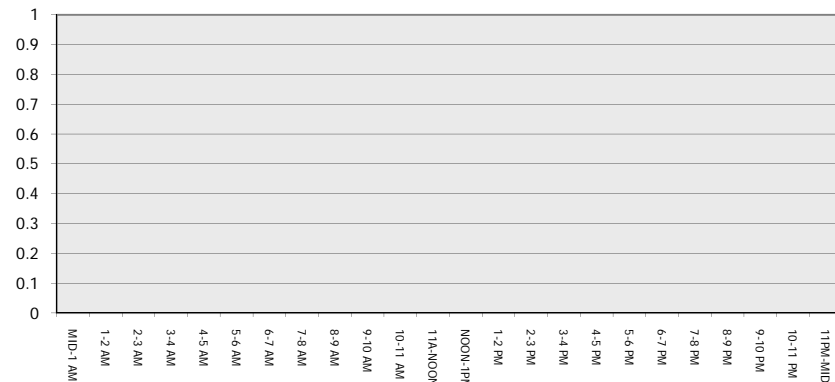
**Main Route - Traffic Demand (Vehicles Per Hour)**



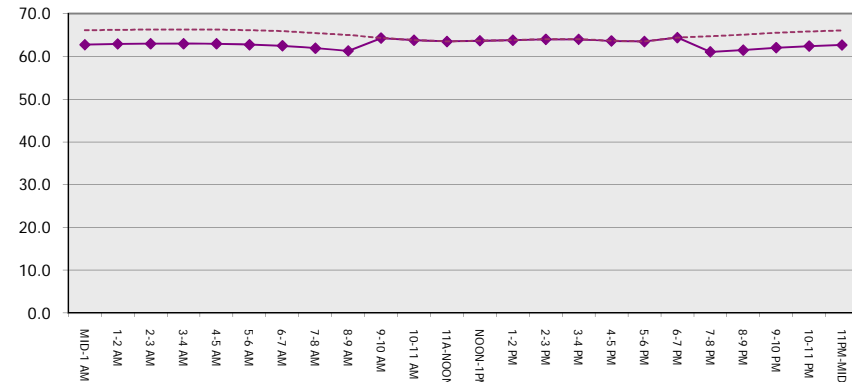
**Main Route Average Delay Per Vehicle (Minutes)**



**Main Route - Average Queue Length (Vehicles)**



**Main Route - Average Speed (MPH)**



<b>IH 94: STH 73 TO STH 26 (DANE AND JEFFERSON COUNTIES) NIGHTTIME CLOSURE DIVERSION ROUTE: STH 73 - USH 12 - USH 18 - STH 89</b>	<b>MAY</b>
	Analyzed for 2009 Construction Season

<b>SUMMARY OF TRAFFIC MODEL OUTPUT</b>	
SUNDAY	EASTBOUND DIRECTION

TIME OF DAY	FLOWS AND CAPACITY IN VEH/HR								AVERAGE SPEEDS IN MPH						
	MAIN		DIVERSION		SITE CAPA CITY	FLOW MAIN ROUTE	FLOW DIVER -TING	TOTAL DIVN FLOW	AV.DEL PER VEH (MINS)	AVERAGE QUEUE (VEH)	MAIN ROUTE		SITE	ALTERNATE ROUTE	
	DEMAND FLOW	PCT HEAVY	NORMAL FLOW	PCT HEAVY							WITHOUT WORK ZN	WITH WORK ZN		WITHOUT WORK ZN	WITH WORK ZN
MID-1 AM	178	0.0	24	0.0	1500	178	0	24	0.44	0	66.1	62.7	44.8	34.5	34.5
1-2 AM	110	0.0	15	0.0	1500	110	0	15	0.43	0	66.2	62.9	45.0	34.6	34.6
2-3 AM	87	0.0	12	0.0	1500	87	0	12	0.43	0	66.2	62.9	45.1	34.7	34.7
3-4 AM	65	0.0	8	0.0	1500	65	0	8	0.43	0	66.3	63.0	45.2	34.7	34.7
4-5 AM	83	0.0	12	0.0	1500	83	0	12	0.43	0	66.3	63.0	45.1	34.7	34.7
5-6 AM	119	0.0	16	0.0	1500	119	0	16	0.43	0	66.1	62.8	45.0	34.6	34.6
6-7 AM	194	0.0	26	0.0	1500	194	0	26	0.44	0	66.0	62.7	44.7	34.5	34.5
7-8 AM	340	0.0	45	0.0	1500	340	0	45	0.46	0	65.8	62.3	44.2	34.3	34.3
8-9 AM	584	0.0	77	0.0	1500	584	0	77	0.48	0	65.3	61.7	43.2	33.9	33.9
9-10 AM	1000	0.0	133	0.0	OFF	1000	0	133	0.00	0	64.5	64.5	64.5	33.3	33.3
10-11 AM	1455	0.0	194	0.0	OFF	1455	0	194	0.00	0	63.7	63.7	63.7	32.7	32.7
11A-NOON	1789	0.0	239	0.0	OFF	1789	0	239	0.00	0	63.0	63.0	63.0	32.2	32.2
NOON-1PM	1685	0.0	224	0.0	OFF	1685	0	224	0.00	0	63.2	63.2	63.2	32.3	32.3
1-2 PM	1729	0.0	230	0.0	OFF	1729	0	230	0.00	0	63.2	63.2	63.2	32.2	32.2
2-3 PM	1770	0.0	235	0.0	OFF	1770	0	235	0.00	0	63.1	63.1	63.1	32.2	32.2
3-4 PM	1752	0.0	233	0.0	OFF	1752	0	233	0.00	0	63.1	63.1	63.1	32.2	32.2
4-5 PM	1912	0.0	254	0.0	OFF	1912	0	254	0.00	0	62.8	62.8	62.8	32.0	32.0
5-6 PM	1771	0.0	235	0.0	OFF	1771	0	235	0.00	0	63.1	63.1	63.1	32.2	32.2
6-7 PM	1531	0.0	204	0.0	OFF	1531	0	204	0.00	0	63.5	63.5	63.5	32.5	32.5
7-8 PM	1412	0.0	188	0.0	1500	1412	0	188	0.91	0	63.8	57.6	32.7	32.7	32.7
8-9 PM	1023	0.0	136	0.0	1500	1023	0	136	0.52	0	64.5	60.7	41.6	33.3	33.3
9-10 PM	668	0.0	89	0.0	1500	668	0	89	0.49	0	65.1	61.5	42.8	33.8	33.8
10-11 PM	450	0.0	60	0.0	1500	450	0	60	0.47	0	65.6	62.1	43.7	34.1	34.1
11PM-MID	275	0.0	37	0.0	1500	275	0	37	0.45	0	65.9	62.5	44.4	34.4	34.4

"OFF" INDICATES NO ROAD WORK (ALL LANES OPEN TO TRAFFIC)

*----- SITE BREAKDOWN DELAYS -----*	
BREAKDOWN DURATION (MINS)	0
RANGE OF QUEUE DELAY - MIN	0.0
(VEH-H) MAX	0.0
RANGE OF DIVN DELAY - MIN	0.0
(VEH-H) MAX	0.0
AV BREAKDOWNS PER DAY	0.00
AV QUEUE DELAY/DAY (VEH-H)	0.0
AV DIVN DELAY/DAY (VEH-H)	0.0
AV TOTAL DELAY/DAY (VEH-H)	0.0

*----- SITE ACCIDENT DELAYS -----*	
ACCIDENT DURATION (MINS)	0
RANGE OF QUEUE DELAY - MIN	0.0
(VEH-H) MAX	0.0
RANGE OF DIVN DELAY - MIN	0.0
(VEH-H) MAX	0.0
AV ACCIDENTS PER DAY	0.00
AV QUEUE DELAY/DAY (VEH-H)	0.0
AV DIVN DELAY/DAY (VEH-H)	0.0
AV TOTAL DELAY/DAY (VEH-H)	0.0

AVERAGE ACCIDENT NUMBERS (PIA/DAY)	
MAIN ROUTE WITHOUT WORKS	0.0318
MAIN ROUTE WITH WORKS	0.0315
DIVERSION	0.0866

PIA: Personal Injury Accidents

IMPACTS ON ROAD USERS	
ROAD USER COSTS PER DAY ( DOLLARS)	\$792
CONGESTED HOURS PER DAY*	0

\*Delays Exceeding 15 Minutes

**IH 94: STH 73 TO STH 26 (DANE AND JEFFERSON COUNTIES)  
 NIGHTTIME CLOSURE  
 DIVERSION ROUTE: STH 73 - USH 12 - USH 18 - STH 89**

**MAY**  
 Analyzed for 2009  
 Construction Season

**GRAPHICAL REPRESENTATION OF TRAFFIC MODEL INPUT AND OUTPUT**  
**SUNDAY EASTBOUND DIRECTION**

