

<b>USH 12/14: USH 14 TO OLD SAUK RD (DANE COUNTY)</b> <b>NIGHTTIME CLOSURE</b> <b>NO DIVERSION ROUTE (MAX QUEUE METHOD)</b>	<b>AUGUST</b>
	Analyzed for 2009 Construction Season

**SUMMARY OF TRAFFIC MODEL OUTPUT**

SUNDAY WESTBOUND DIRECTION

TIME OF DAY	FLOWS AND CAPACITY IN VEH/HR						AVERAGE SPEEDS IN MPH			
	MAIN ROUTE		SITE CAPA CITY	FLOW		AV.DEL PER VEH (MINS)	AVERAGE QUEUE (VEH)	MAIN ROUTE		SITE
	DEMAND FLOW	PCT HEAVY		MAIN ROUTE	'DIVER TED'			WITHOUT WORK ZONE	WITH WORK ZONE	
MID-1 AM	272	0.0	1500	272	0	0.36	0	60.2	49.1	44.4
1-2 AM	133	0.0	1500	133	0	0.34	0	60.2	49.5	45.0
2-3 AM	114	0.0	1500	114	0	0.34	0	60.2	49.6	45.0
3-4 AM	60	0.0	1500	60	0	0.34	0	60.2	49.7	45.3
4-5 AM	50	0.0	1500	50	0	0.33	0	60.2	49.7	45.3
5-6 AM	78	0.0	1500	78	0	0.34	0	60.2	49.7	45.2
6-7 AM	155	0.0	1500	155	0	0.35	0	60.2	49.4	44.8
7-8 AM	330	0.0	1500	330	0	0.37	0	60.2	48.9	44.2
8-9 AM	572	0.0	1500	572	0	0.40	0	60.2	48.1	43.2
9-10 AM	748	0.0	OFF	748	0	0.00	0	60.2	60.2	60.2
10-11 AM	1080	0.0	OFF	1080	0	0.00	0	60.2	60.2	60.2
11AM-NOON	1318	0.0	OFF	1318	0	0.00	0	60.2	60.2	60.2
NOON-1PM	1437	0.0	OFF	1437	0	0.00	0	60.2	60.2	60.2
1-2 PM	1403	0.0	OFF	1403	0	0.00	0	60.2	60.2	60.2
2-3 PM	1465	0.0	OFF	1465	0	0.00	0	60.2	60.2	60.2
3-4 PM	1464	0.0	OFF	1464	0	0.00	0	60.2	60.2	60.2
4-5 PM	1457	0.0	OFF	1457	0	0.00	0	60.2	60.2	60.2
5-6 PM	1266	0.0	OFF	1266	0	0.00	0	60.2	60.2	60.2
6-7 PM	1047	0.0	OFF	1047	0	0.00	0	60.2	60.2	60.2
7-8 PM	823	0.0	1500	823	0	0.43	0	60.2	47.4	42.3
8-9 PM	655	0.0	1500	655	0	0.41	0	60.2	47.9	42.9
9-10 PM	529	0.0	1500	529	0	0.39	0	60.2	48.3	43.4
10-11 PM	311	0.0	1500	311	0	0.37	0	60.2	48.9	44.2
11PM-MID	224	0.0	1500	224	0	0.36	0	60.2	49.2	44.6

"OFF" INDICATES NO ROAD WORK (ALL LANES OPEN TO TRAFFIC)

*----- SITE BREAKDOWN DELAYS -----*	
BREAKDOWN DURATION (MINS)	0
RANGE OF QUEUE DELAY - MIN (VEH-H) MAX	0.0
AV BREAKDOWNS PER DAY	0.00
AV QUEUE DELAY/DAY (VEH-H)	0.0
AV TOTAL DELAY/DAY (VEH-H)	0.0

*----- SITE ACCIDENT DELAYS -----*	
BREAKDOWN DURATION (MINS)	0
RANGE OF QUEUE DELAY - MIN (VEH-H) MAX	0
AV BREAKDOWNS PER DAY	0
AV QUEUE DELAY/DAY (VEH-H)	0
AV TOTAL DELAY/DAY (VEH-H)	0

AVERAGE ACCIDENT NUMBERS (PIA/DAY)	
MAIN ROUTE WITHOUT WORKS	0.0043
MAIN ROUTE WITH WORKS	0.0040
'DIVERSION'	0.0000
PIA: Personal Injury Accidents	
IMPACTS ON ROAD USERS	
ROAD USER COSTS PER DAY	\$406
CONGESTED HOURS PER DAY*	0

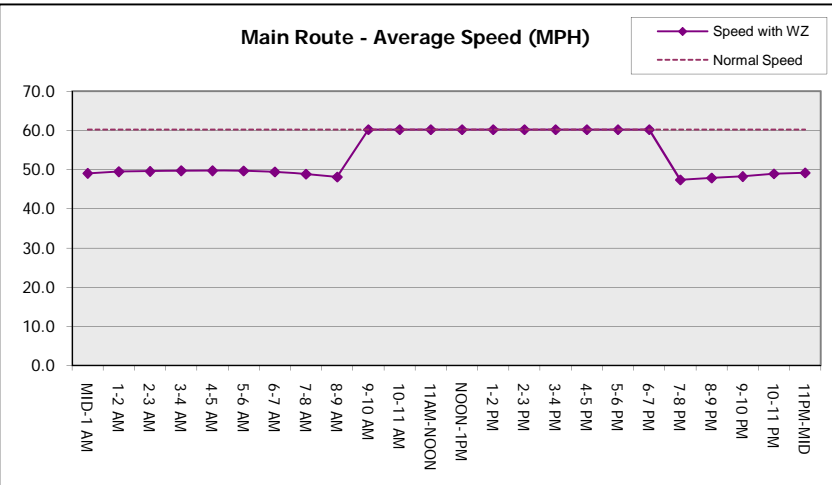
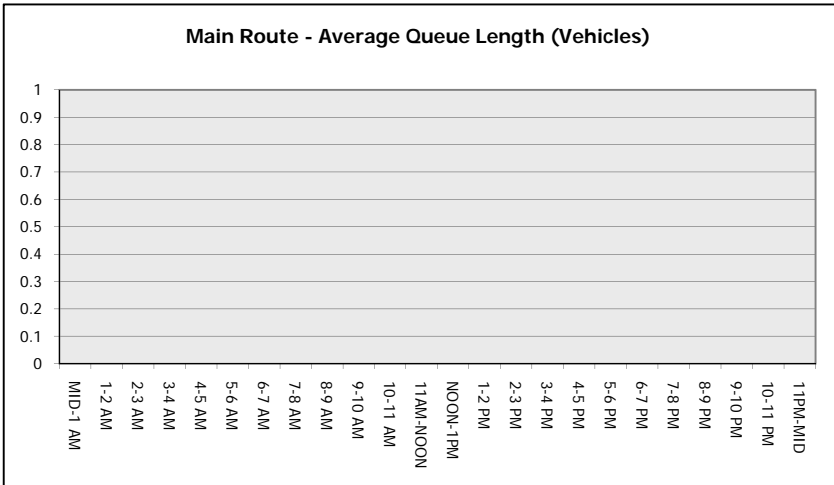
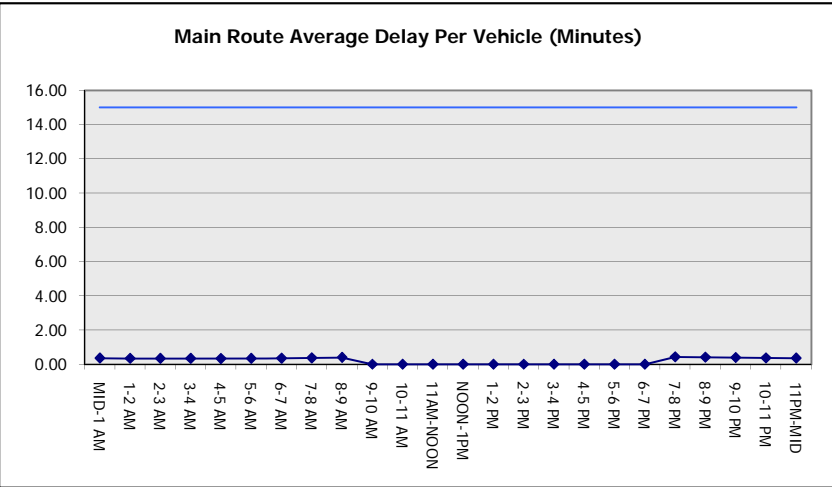
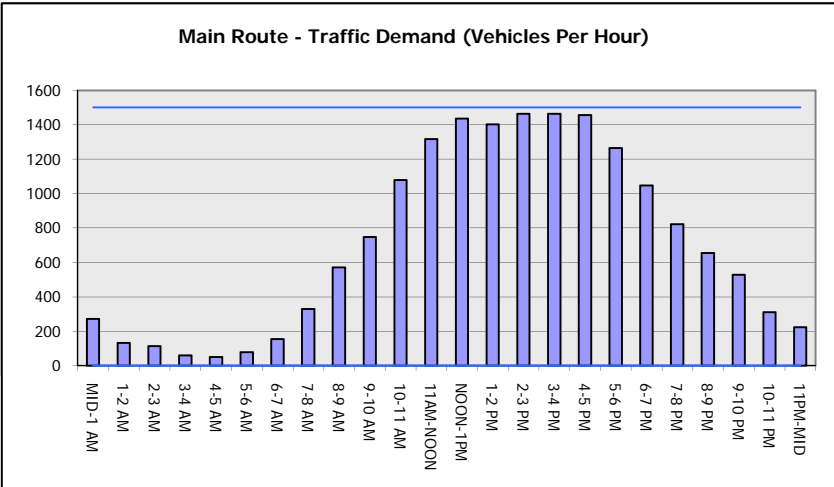
\*Delays Exceeding User-Specified Maximum

**USH 12/14: USH 14 TO OLD SAUK RD (DANE COUNTY)  
NIGHTTIME CLOSURE  
NO DIVERSION ROUTE (MAX QUEUE METHOD)**

**AUGUST**  
Analyzed for 2009  
Construction Season

**GRAPHICAL REPRESENTATION OF TRAFFIC MODEL INPUT AND OUTPUT**

**SUNDAY WESTBOUND DIRECTION**



<b>USH 12/14: USH 14 TO OLD SAUK RD (DANE COUNTY)</b> <b>NIGHTTIME CLOSURE</b> <b>NO DIVERSION ROUTE (MAX QUEUE METHOD)</b>	<b>AUGUST</b>
	Analyzed for 2009 Construction Season

**SUMMARY OF TRAFFIC MODEL OUTPUT**

SUNDAY EASTBOUND DIRECTION

TIME OF DAY	FLOWS AND CAPACITY IN VEH/HR						AVERAGE SPEEDS IN MPH			
	MAIN ROUTE		SITE CAPA CITY	FLOW		AV.DEL PER VEH (MINS)	AVERAGE QUEUE (VEH)	MAIN ROUTE		SITE
	DEMAND FLOW	PCT HEAVY		MAIN ROUTE	'DIVER TED'			WITHOUT WORK ZONE	WITH WORK ZONE	
MID-1 AM	281	0.0	1500	281	0	0.36	0	60.2	49.1	44.3
1-2 AM	181	0.0	1500	181	0	0.35	0	60.2	49.4	44.8
2-3 AM	191	0.0	1500	191	0	0.35	0	60.2	49.3	44.7
3-4 AM	75	0.0	1500	75	0	0.34	0	60.2	49.7	45.2
4-5 AM	67	0.0	1500	67	0	0.34	0	60.2	49.7	45.2
5-6 AM	95	0.0	1500	95	0	0.34	0	60.2	49.6	45.1
6-7 AM	197	0.0	1500	197	0	0.35	0	60.2	49.3	44.7
7-8 AM	297	0.0	1500	297	0	0.37	0	60.2	49.0	44.3
8-9 AM	557	0.0	1500	557	0	0.40	0	60.2	48.2	43.3
9-10 AM	850	0.0	OFF	850	0	0.00	0	60.2	60.2	60.2
10-11 AM	1205	0.0	OFF	1205	0	0.00	0	60.2	60.2	60.2
11AM-NOON	1590	0.0	OFF	1590	0	0.00	0	60.2	60.2	60.2
NOON-1PM	1721	0.0	OFF	1721	0	0.00	0	60.2	60.2	60.2
1-2 PM	1737	0.0	OFF	1737	0	0.00	0	60.2	60.2	60.2
2-3 PM	1728	0.0	OFF	1728	0	0.00	0	60.2	60.2	60.2
3-4 PM	1715	0.0	OFF	1715	0	0.00	0	60.2	60.2	60.2
4-5 PM	1694	0.0	OFF	1694	0	0.00	0	60.2	60.2	60.2
5-6 PM	1520	0.0	OFF	1520	0	0.00	0	60.2	60.2	60.2
6-7 PM	1396	0.0	OFF	1396	0	0.00	0	60.2	60.2	60.2
7-8 PM	1184	0.0	1500	1184	0	0.55	0	60.2	44.7	39.0
8-9 PM	917	0.0	1500	917	0	0.44	0	60.2	47.1	42.0
9-10 PM	680	0.0	1500	680	0	0.41	0	60.2	47.8	42.8
10-11 PM	386	0.0	1500	386	0	0.38	0	60.2	48.7	44.0
11PM-MID	199	0.0	1500	199	0	0.35	0	60.2	49.3	44.7

"OFF" INDICATES NO ROAD WORK (ALL LANES OPEN TO TRAFFIC)

*----- SITE BREAKDOWN DELAYS -----*	
BREAKDOWN DURATION (MINS)	0
RANGE OF QUEUE DELAY - MIN (VEH-H) MAX	0.0
AV BREAKDOWNS PER DAY	0.00
AV QUEUE DELAY/DAY (VEH-H)	0.0
AV TOTAL DELAY/DAY (VEH-H)	0.0

*----- SITE ACCIDENT DELAYS -----*	
BREAKDOWN DURATION (MINS)	0
RANGE OF QUEUE DELAY - MIN (VEH-H) MAX	0
AV BREAKDOWNS PER DAY	0
AV QUEUE DELAY/DAY (VEH-H)	0
AV TOTAL DELAY/DAY (VEH-H)	0

AVERAGE ACCIDENT NUMBERS (PIA/DAY)	
MAIN ROUTE WITHOUT WORKS	0.0052
MAIN ROUTE WITH WORKS	0.0049
'DIVERSION'	0.0000

PIA: Personal Injury Accidents

ECONOMIC IMPACT ON ROAD USERS	
ROAD USER COSTS PER DAY	\$548
CONGESTED HOURS PER DAY*	0

\*Delays Exceeding User-Specified Maximum

**USH 12/14: USH 14 TO OLD SAUK RD (DANE COUNTY)  
NIGHTTIME CLOSURE  
NO DIVERSION ROUTE (MAX QUEUE METHOD)**

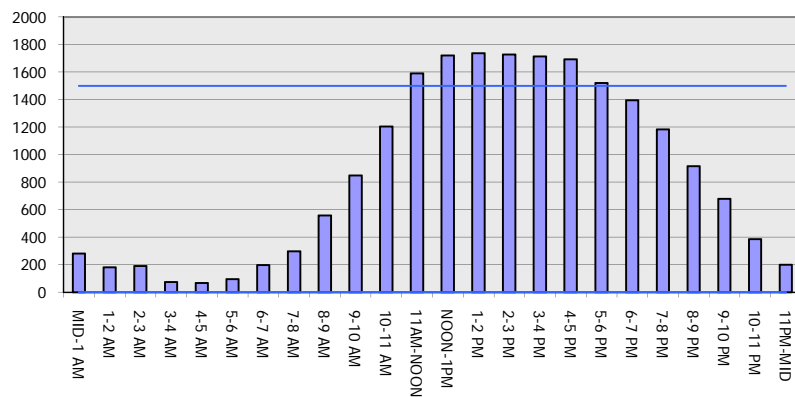
**AUGUST**

Analyzed for 2009  
Construction Season

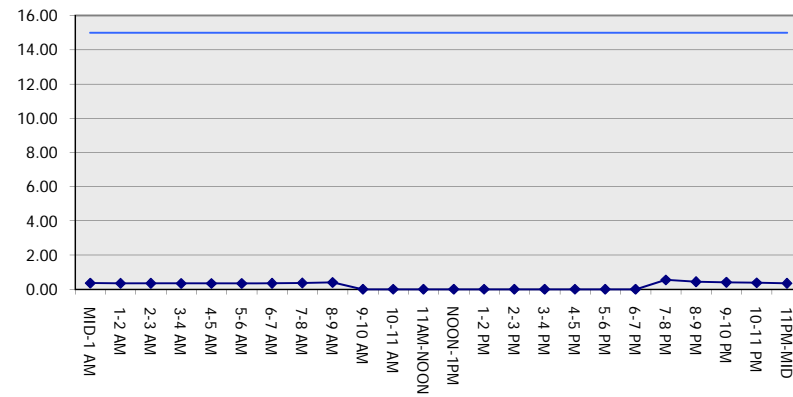
**GRAPHICAL REPRESENTATION OF TRAFFIC MODEL INPUT AND OUTPUT**

**SUNDAY EASTBOUND DIRECTION**

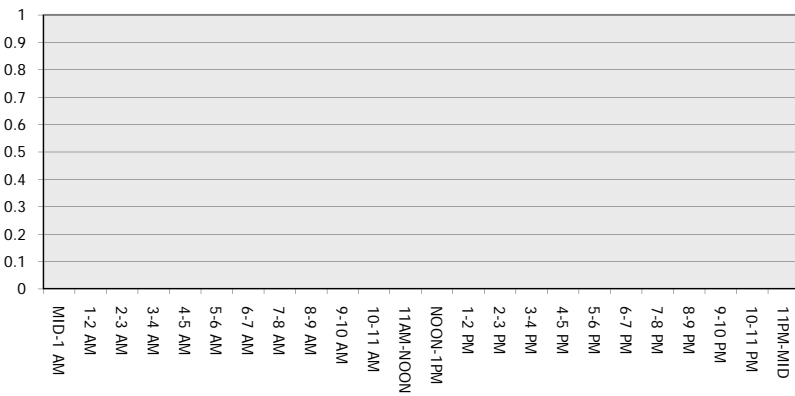
**Main Route - Traffic Demand (Vehicles Per Hour)**



**Main Route Average Delay Per Vehicle (Minutes)**



**Main Route - Average Queue Length (Vehicles)**



**Main Route - Average Speed (MPH)**

