

USH 12/14: USH 14 TO OLD SAUK RD (DANE COUNTY) NIGHTTIME CLOSURE NO DIVERSION ROUTE (MAX QUEUE METHOD)	MAY
	Analyzed for 2009 Construction Season

SUMMARY OF TRAFFIC MODEL OUTPUT

SATURDAY WESTBOUND DIRECTION

TIME OF DAY	FLOWS AND CAPACITY IN VEH/HR							AVERAGE SPEEDS IN MPH			
	MAIN ROUTE		SITE CAPA CITY	FLOW		AV.DEL PER VEH (MINS)	AVERAGE QUEUE (VEH)	MAIN ROUTE		SITE	
	DEMAND FLOW	PCT HEAVY		MAIN ROUTE	'DIVER TED'			WITHOUT WORK ZONE	WITH WORK ZONE		
MID-1 AM	212	0.0	1500	212	0	0.35	0	60.2	49.2	44.6	
1-2 AM	127	0.0	1500	127	0	0.34	0	60.2	49.5	45.0	
2-3 AM	98	0.0	1500	98	0	0.34	0	60.2	49.6	45.1	
3-4 AM	94	0.0	1500	94	0	0.34	0	60.2	49.6	45.1	
4-5 AM	87	0.0	1500	87	0	0.34	0	60.2	49.6	45.1	
5-6 AM	148	0.0	1500	148	0	0.35	0	60.2	49.4	44.9	
6-7 AM	299	0.0	1500	299	0	0.37	0	60.2	49.0	44.3	
7-8 AM	650	0.0	1500	650	0	0.41	0	60.2	47.9	43.0	
8-9 AM	957	0.0	OFF	957	0	0.00	0	60.2	60.2	60.2	
9-10 AM	1249	0.0	OFF	1249	0	0.00	0	60.2	60.2	60.2	
10-11 AM	1489	0.0	OFF	1489	0	0.00	0	60.2	60.2	60.2	
11AM-NOON	1639	0.0	OFF	1639	0	0.00	0	60.2	60.2	60.2	
NOON-1PM	1640	0.0	OFF	1640	0	0.00	0	60.2	60.2	60.2	
1-2 PM	1602	0.0	OFF	1602	0	0.00	0	60.2	60.2	60.2	
2-3 PM	1579	0.0	OFF	1579	0	0.00	0	60.2	60.2	60.2	
3-4 PM	1649	0.0	OFF	1649	0	0.00	0	60.2	60.2	60.2	
4-5 PM	1593	0.0	OFF	1593	0	0.00	0	60.2	60.2	60.2	
5-6 PM	1440	0.0	OFF	1440	0	0.00	0	60.2	60.2	60.2	
6-7 PM	1255	0.0	1500	1255	0	0.65	0	60.2	42.8	36.8	
7-8 PM	1016	0.0	1500	1016	0	0.45	0	60.2	46.9	41.6	
8-9 PM	890	0.0	1500	890	0	0.44	0	60.2	47.2	42.0	
9-10 PM	780	0.0	1500	780	0	0.42	0	60.2	47.6	42.5	
10-11 PM	510	0.0	1500	510	0	0.39	0	60.2	48.3	43.5	
11PM-MID	363	0.0	1500	363	0	0.37	0	60.2	48.8	44.0	

"OFF" INDICATES NO ROAD WORK (ALL LANES OPEN TO TRAFFIC)

----- SITE BREAKDOWN DELAYS -----	
BREAKDOWN DURATION (MINS)	0
RANGE OF QUEUE DELAY - MIN (VEH-H) MAX	0.0
AV BREAKDOWNS PER DAY	0.00
AV QUEUE DELAY/DAY (VEH-H)	0.0
AV TOTAL DELAY/DAY (VEH-H)	0.0

----- SITE ACCIDENT DELAYS -----	
BREAKDOWN DURATION (MINS)	0
RANGE OF QUEUE DELAY - MIN (VEH-H) MAX	0
AV BREAKDOWNS PER DAY	0
AV QUEUE DELAY/DAY (VEH-H)	0
AV TOTAL DELAY/DAY (VEH-H)	0

AVERAGE ACCIDENT NUMBERS (PIA/DAY)	
MAIN ROUTE WITHOUT WORKS	0.0054
MAIN ROUTE WITH WORKS	0.0050
'DIVERSION'	0.0000
PIA: Personal Injury Accidents	
IMPACTS ON ROAD USERS	
ROAD USER COSTS PER DAY	\$724
CONGESTED HOURS PER DAY*	0

*Delays Exceeding User-Specified Maximum

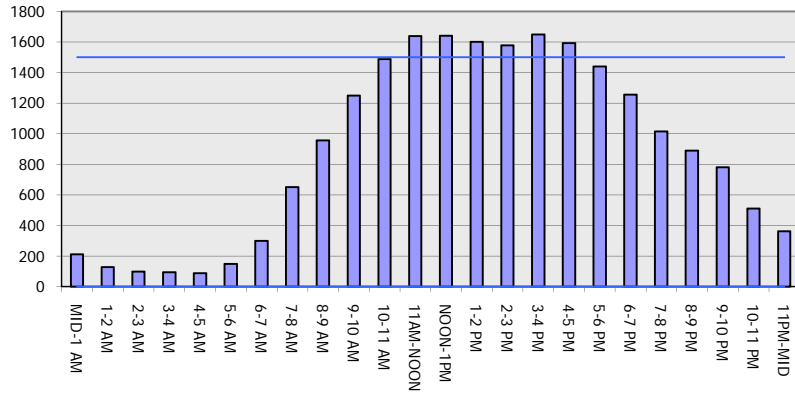
**USH 12/14: USH 14 TO OLD SAUK RD (DANE COUNTY)
 NIGHTTIME CLOSURE
 NO DIVERSION ROUTE (MAX QUEUE METHOD)**

MAY
 Analyzed for 2009
 Construction Season

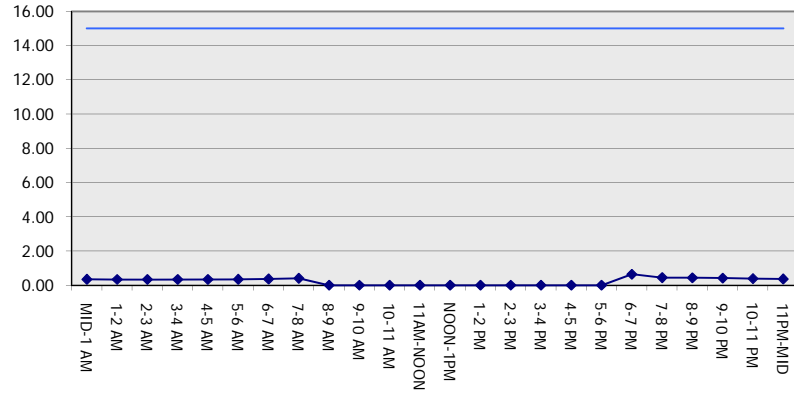
GRAPHICAL REPRESENTATION OF TRAFFIC MODEL INPUT AND OUTPUT

SATURDAY WESTBOUND DIRECTION

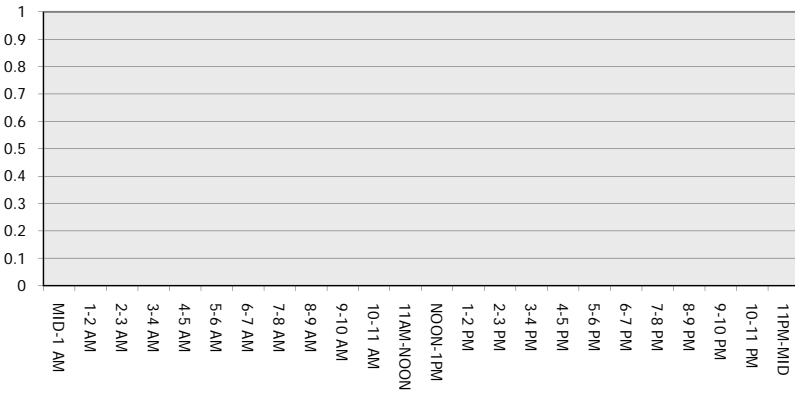
Main Route - Traffic Demand (Vehicles Per Hour)



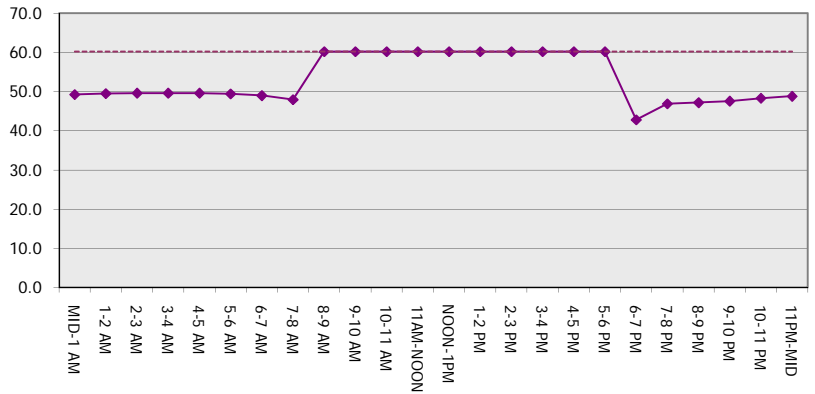
Main Route Average Delay Per Vehicle (Minutes)



Main Route - Average Queue Length (Vehicles)



Main Route - Average Speed (MPH)



USH 12/14: USH 14 TO OLD SAUK RD (DANE COUNTY) NIGHTTIME CLOSURE NO DIVERSION ROUTE (MAX QUEUE METHOD)	MAY
	Analyzed for 2009 Construction Season

SUMMARY OF TRAFFIC MODEL OUTPUT

SATURDAY EASTBOUND DIRECTION

TIME OF DAY	FLOWS AND CAPACITY IN VEH/HR						AVERAGE SPEEDS IN MPH			
	MAIN ROUTE		SITE CAPA CITY	FLOW		AV.DEL PER VEH (MINS)	AVERAGE QUEUE (VEH)	MAIN ROUTE		SITE
	DEMAND FLOW	PCT HEAVY		MAIN ROUTE	'DIVER TED'			WITHOUT WORK ZONE	WITH WORK ZONE	
MID-1 AM	255	0.0	1500	255	0	0.36	0	60.2	49.1	44.5
1-2 AM	163	0.0	1500	163	0	0.35	0	60.2	49.4	44.8
2-3 AM	110	0.0	1500	110	0	0.34	0	60.2	49.6	45.0
3-4 AM	73	0.0	1500	73	0	0.34	0	60.2	49.7	45.2
4-5 AM	100	0.0	1500	100	0	0.34	0	60.2	49.6	45.1
5-6 AM	152	0.0	1500	152	0	0.35	0	60.2	49.4	44.9
6-7 AM	360	0.0	1500	360	0	0.37	0	60.2	48.8	44.0
7-8 AM	621	0.0	1500	621	0	0.40	0	60.2	48.0	43.0
8-9 AM	1043	0.0	OFF	1043	0	0.00	0	60.2	60.2	60.2
9-10 AM	1302	0.0	OFF	1302	0	0.00	0	60.2	60.2	60.2
10-11 AM	1564	0.0	OFF	1564	0	0.00	0	60.2	60.2	60.2
11AM-NOON	1625	0.0	OFF	1625	0	0.00	0	60.2	60.2	60.2
NOON-1PM	1690	0.0	OFF	1690	0	0.00	0	60.2	60.2	60.2
1-2 PM	1633	0.0	OFF	1633	0	0.00	0	60.2	60.2	60.2
2-3 PM	1560	0.0	OFF	1560	0	0.00	0	60.2	60.2	60.2
3-4 PM	1509	0.0	OFF	1509	0	0.00	0	60.2	60.2	60.2
4-5 PM	1438	0.0	OFF	1438	0	0.00	0	60.2	60.2	60.2
5-6 PM	1339	0.0	OFF	1339	0	0.00	0	60.2	60.2	60.2
6-7 PM	1181	0.0	1500	1181	0	0.55	0	60.2	44.8	39.1
7-8 PM	986	0.0	1500	986	0	0.45	0	60.2	46.9	41.7
8-9 PM	829	0.0	1500	829	0	0.43	0	60.2	47.4	42.3
9-10 PM	694	0.0	1500	694	0	0.41	0	60.2	47.8	42.8
10-11 PM	527	0.0	1500	527	0	0.39	0	60.2	48.3	43.4
11PM-MID	357	0.0	1500	357	0	0.37	0	60.2	48.8	44.0

"OFF" INDICATES NO ROAD WORK (ALL LANES OPEN TO TRAFFIC)

----- SITE BREAKDOWN DELAYS -----	
BREAKDOWN DURATION (MINS)	0
RANGE OF QUEUE DELAY - MIN (VEH-H) MAX	0.0
AV BREAKDOWNS PER DAY	0.00
AV QUEUE DELAY/DAY (VEH-H)	0.0
AV TOTAL DELAY/DAY (VEH-H)	0.0

----- SITE ACCIDENT DELAYS -----	
BREAKDOWN DURATION (MINS)	0
RANGE OF QUEUE DELAY - MIN (VEH-H) MAX	0
AV BREAKDOWNS PER DAY	0
AV QUEUE DELAY/DAY (VEH-H)	0
AV TOTAL DELAY/DAY (VEH-H)	0

AVERAGE ACCIDENT NUMBERS (PIA/DAY)	
MAIN ROUTE WITHOUT WORKS	0.0054
MAIN ROUTE WITH WORKS	0.0049
'DIVERSION'	0.0000

PIA: Personal Injury Accidents

ECONOMIC IMPACT ON ROAD USERS	
ROAD USER COSTS PER DAY	\$672
CONGESTED HOURS PER DAY*	0

*Delays Exceeding User-Specified Maximum

**USH 12/14: USH 14 TO OLD SAUK RD (DANE COUNTY)
NIGHTTIME CLOSURE
NO DIVERSION ROUTE (MAX QUEUE METHOD)**

MAY
Analyzed for 2009
Construction Season

GRAPHICAL REPRESENTATION OF TRAFFIC MODEL INPUT AND OUTPUT
SATURDAY EASTBOUND DIRECTION

