

USH 151: IH 39 TO STH 19 (DANE COUNTY) NIGHTTIME 2 LANE CLOSURE NO DIVERSION ROUTE (MAX QUEUE SEGMENT)	OCTOBER
	Analyzed for 2009 Construction Season

SUMMARY OF TRAFFIC MODEL OUTPUT

SUNDAY SOUTHBOUND DIRECTION

TIME OF DAY	FLOWS AND CAPACITY IN VEH/HR						AVERAGE SPEEDS IN MPH			
	MAIN ROUTE		SITE CAPA CITY	FLOW		AV.DEL PER VEH (MINS)	AVERAGE QUEUE (VEH)	MAIN ROUTE		SITE
	DEMAND FLOW	PCT HEAVY		MAIN ROUTE	'DIVER TED'			WITHOUT WORK ZONE	WITH WORK ZONE	
MID-1 AM	202	0.0	1500	202	0	0.50	0	70.2	62.4	44.6
1-2 AM	225	0.0	1500	225	0	0.50	0	70.2	62.4	44.6
2-3 AM	162	0.0	1500	162	0	0.49	0	70.2	62.5	44.8
3-4 AM	205	0.0	1500	205	0	0.50	0	70.2	62.4	44.6
4-5 AM	171	0.0	1500	171	0	0.49	0	70.2	62.5	44.8
5-6 AM	168	0.0	1500	168	0	0.49	0	70.2	62.5	44.8
6-7 AM	204	0.0	1500	204	0	0.50	0	70.2	62.4	44.6
7-8 AM	282	0.0	1500	282	0	0.51	0	70.2	62.3	44.3
8-9 AM	375	0.0	1500	375	0	0.52	0	70.2	62.2	44.0
9-10 AM	541	0.0	OFF	541	0	0.00	0	70.0	70.0	70.0
10-11 AM	710	0.0	OFF	710	0	0.00	0	69.9	69.9	69.9
11AM-NOON	818	0.0	OFF	818	0	0.00	0	69.7	69.7	69.7
NOON-1PM	804	0.0	OFF	804	0	0.00	0	69.7	69.7	69.7
1-2 PM	772	0.0	OFF	772	0	0.00	0	69.8	69.8	69.8
2-3 PM	739	0.0	OFF	739	0	0.00	0	69.8	69.8	69.8
3-4 PM	801	0.0	OFF	801	0	0.00	0	69.7	69.7	69.7
4-5 PM	803	0.0	OFF	803	0	0.00	0	69.7	69.7	69.7
5-6 PM	776	0.0	OFF	776	0	0.00	0	69.7	69.7	69.7
6-7 PM	692	0.0	OFF	692	0	0.00	0	69.9	69.9	69.9
7-8 PM	503	0.0	1500	503	0	0.53	0	70.1	61.9	43.5
8-9 PM	533	0.0	1500	533	0	0.54	0	70.0	61.8	43.4
9-10 PM	501	0.0	1500	501	0	0.53	0	70.1	61.9	43.5
10-11 PM	330	0.0	1500	330	0	0.51	0	70.2	62.2	44.2
11PM-MID	298	0.0	1500	298	0	0.51	0	70.2	62.3	44.3

"OFF" INDICATES NO ROAD WORK (ALL LANES OPEN TO TRAFFIC)

----- SITE BREAKDOWN DELAYS -----	
BREAKDOWN DURATION (MINS)	0
RANGE OF QUEUE DELAY - MIN (VEH-H) MAX	0.0
AV BREAKDOWNS PER DAY	0.00
AV QUEUE DELAY/DAY (VEH-H)	0.0
AV TOTAL DELAY/DAY (VEH-H)	0.0

----- SITE ACCIDENT DELAYS -----	
BREAKDOWN DURATION (MINS)	0
RANGE OF QUEUE DELAY - MIN (VEH-H) MAX	0
AV BREAKDOWNS PER DAY	0
AV QUEUE DELAY/DAY (VEH-H)	0
AV TOTAL DELAY/DAY (VEH-H)	0

AVERAGE ACCIDENT NUMBERS (PIA/DAY)	
MAIN ROUTE WITHOUT WORKS	0.0087
MAIN ROUTE WITH WORKS	0.0084
'DIVERSION'	0.0000
PIA: Personal Injury Accidents	
IMPACTS ON ROAD USERS	
ROAD USER COSTS PER DAY	\$496
CONGESTED HOURS PER DAY*	0

*Delays Exceeding User-Specified Maximum

**USH 151: IH 39 TO STH 19 (DANE COUNTY)
NIGHTTIME 2 LANE CLOSURE
NO DIVERSION ROUTE (MAX QUEUE SEGMENT)**

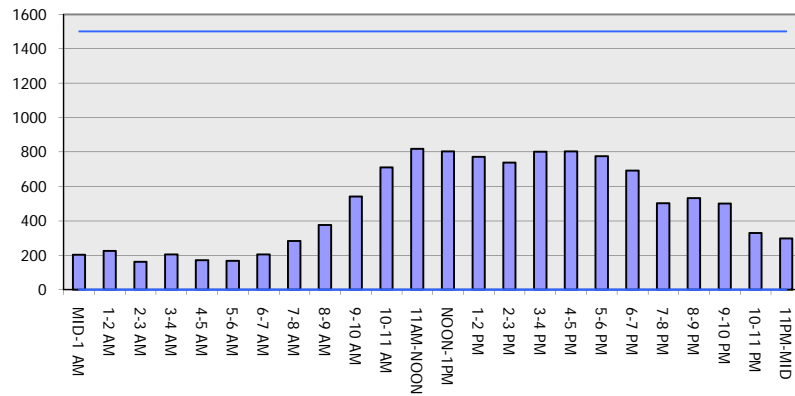
OCTOBER

Analyzed for 2009
Construction Season

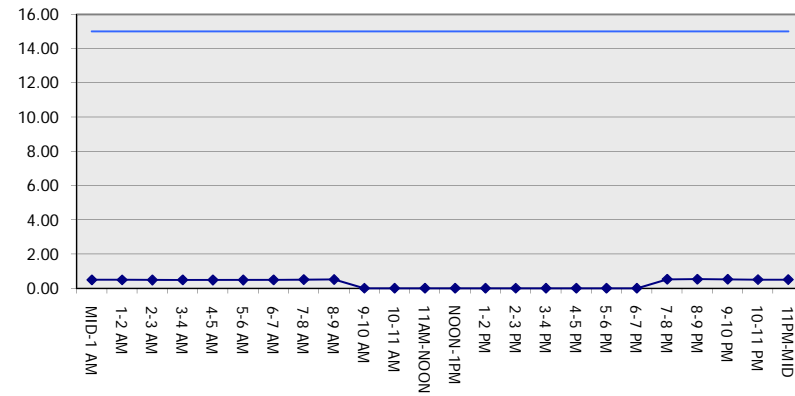
GRAPHICAL REPRESENTATION OF TRAFFIC MODEL INPUT AND OUTPUT

SUNDAY SOUTHBOUND DIRECTION

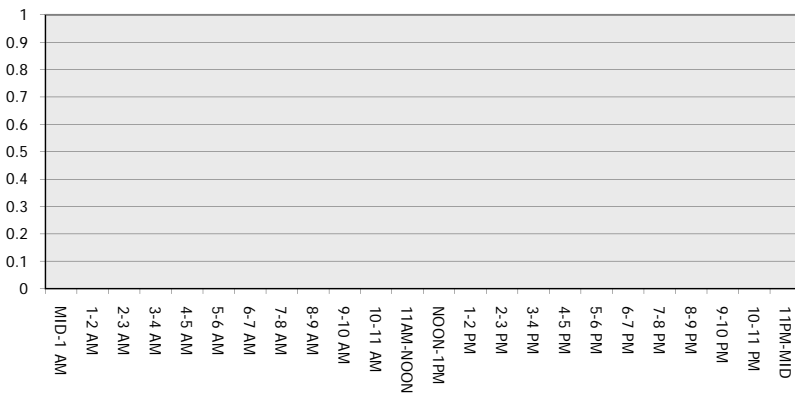
Main Route - Traffic Demand (Vehicles Per Hour)



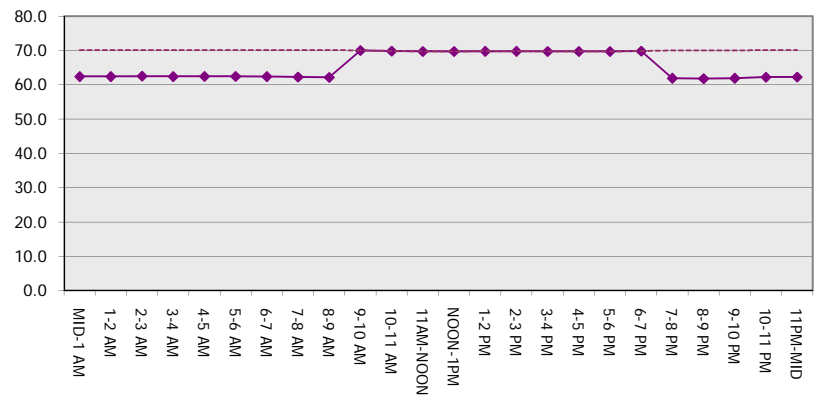
Main Route Average Delay Per Vehicle (Minutes)



Main Route - Average Queue Length (Vehicles)



Main Route - Average Speed (MPH)



USH 151: IH 39 TO STH 19 (DANE COUNTY) NIGHTTIME 2 LANE CLOSURE NO DIVERSION ROUTE (MAX QUEUE SEGMENT)	OCTOBER
	Analyzed for 2009 Construction Season

SUMMARY OF TRAFFIC MODEL OUTPUT

SUNDAY NORTHBOUND DIRECTION

TIME OF DAY	FLOWS AND CAPACITY IN VEH/HR						AVERAGE SPEEDS IN MPH			
	MAIN ROUTE		SITE CAPA CITY	FLOW		AV.DEL PER VEH (MINS)	AVERAGE QUEUE (VEH)	MAIN ROUTE		SITE
	DEMAND FLOW	PCT HEAVY		MAIN ROUTE	'DIVER TED'			WITHOUT WORK ZONE	WITH WORK ZONE	
MID-1 AM	395	0.0	1500	395	0	0.52	0	70.2	62.1	43.9
1-2 AM	289	0.0	1500	289	0	0.51	0	70.2	62.3	44.3
2-3 AM	263	0.0	1500	263	0	0.50	0	70.2	62.3	44.4
3-4 AM	172	0.0	1500	172	0	0.49	0	70.2	62.5	44.8
4-5 AM	133	0.0	1500	133	0	0.49	0	70.2	62.5	45.0
5-6 AM	131	0.0	1500	131	0	0.49	0	70.2	62.4	44.6
6-7 AM	214	0.0	1500	214	0	0.52	0	70.2	62.1	43.8
7-8 AM	414	0.0	1500	414	0	0.54	0	70.0	61.7	43.3
8-9 AM	559	0.0	1500	559	0	0.54	0	70.0	61.7	43.3
9-10 AM	831	0.0	OFF	831	0	0.00	0	69.7	69.7	69.7
10-11 AM	1185	0.0	OFF	1185	0	0.00	0	69.2	69.2	69.2
11AM-NOON	1490	0.0	OFF	1490	0	0.00	0	68.9	68.9	68.9
NOON-1PM	1596	0.0	OFF	1596	0	0.00	0	68.7	68.7	68.7
1-2 PM	1638	0.0	OFF	1638	0	0.00	0	68.7	68.7	68.7
2-3 PM	1657	0.0	OFF	1657	0	0.00	0	68.7	68.7	68.7
3-4 PM	1612	0.0	OFF	1612	0	0.00	0	68.7	68.7	68.7
4-5 PM	1720	0.0	OFF	1720	0	0.00	0	68.6	68.6	68.6
5-6 PM	1646	0.0	OFF	1646	0	0.00	0	68.7	68.7	68.7
6-7 PM	1413	0.0	OFF	1413	0	0.00	0	69.0	69.0	69.0
7-8 PM	1112	0.0	1500	1112	0	0.60	0	69.4	60.4	41.3
8-9 PM	822	0.0	1500	822	0	0.57	0	69.7	61.1	42.3
9-10 PM	642	0.0	1500	642	0	0.55	0	69.9	61.5	43.0
10-11 PM	448	0.0	1500	448	0	0.53	0	70.2	62.0	43.7
11PM-MID	285	0.0	1500	285	0	0.51	0	70.2	62.3	44.3

"OFF" INDICATES NO ROAD WORK (ALL LANES OPEN TO TRAFFIC)

----- SITE BREAKDOWN DELAYS -----	
BREAKDOWN DURATION (MINS)	0
RANGE OF QUEUE DELAY - MIN	0.0
(VEH-H) MAX	0.0
AV BREAKDOWNS PER DAY	0.00
AV QUEUE DELAY/DAY (VEH-H)	0.0
AV TOTAL DELAY/DAY (VEH-H)	0.0

----- SITE ACCIDENT DELAYS -----	
BREAKDOWN DURATION (MINS)	0
RANGE OF QUEUE DELAY - MIN	0
(VEH-H) MAX	0
AV BREAKDOWNS PER DAY	0
AV QUEUE DELAY/DAY (VEH-H)	0
AV TOTAL DELAY/DAY (VEH-H)	0

AVERAGE ACCIDENT NUMBERS (PIA/DAY)	
MAIN ROUTE WITHOUT WORKS	0.0154
MAIN ROUTE WITH WORKS	0.0151
'DIVERSION'	0.0000

PIA: Personal Injury Accidents

ECONOMIC IMPACT ON ROAD USERS	
ROAD USER COSTS PER DAY	\$740
CONGESTED HOURS PER DAY*	0

*Delays Exceeding User-Specified Maximum

**USH 151: IH 39 TO STH 19 (DANE COUNTY)
NIGHTTIME 2 LANE CLOSURE
NO DIVERSION ROUTE (MAX QUEUE SEGMENT)**

OCTOBER

Analyzed for 2009
Construction Season

GRAPHICAL REPRESENTATION OF TRAFFIC MODEL INPUT AND OUTPUT
SUNDAY NORTHBOUND DIRECTION

