

USH 151: IH 39 TO STH 19 (DANE COUNTY) NIGHTTIME 2 LANE CLOSURE NO DIVERSION ROUTE (MAX QUEUE SEGMENT)	OCTOBER
	Analyzed for 2009 Construction Season

SUMMARY OF TRAFFIC MODEL OUTPUT

MON-THUR SOUTHBOUND DIRECTION

TIME OF DAY	FLOWS AND CAPACITY IN VEH/HR						AVERAGE SPEEDS IN MPH			
	MAIN ROUTE		SITE CAPA CITY	FLOW		AV.DEL PER VEH (MINS)	AVERAGE QUEUE (VEH)	MAIN ROUTE		SITE
	DEMAND FLOW	PCT HEAVY		MAIN ROUTE	'DIVER TED'			WITHOUT WORK ZONE	WITH WORK ZONE	
MID-1 AM	162	0.0	1500	162	0	0.49	0	70.2	62.5	44.8
1-2 AM	226	0.0	1500	226	0	0.50	0	70.2	62.4	44.6
2-3 AM	200	0.0	1500	200	0	0.50	0	70.2	62.5	44.7
3-4 AM	217	0.0	1500	217	0	0.50	0	70.2	62.4	44.6
4-5 AM	297	0.0	1500	297	0	0.51	0	70.2	62.3	44.3
5-6 AM	564	0.0	OFF	564	0	0.00	0	70.0	70.0	70.0
6-7 AM	1242	0.0	OFF	1242	0	0.00	0	69.2	69.2	69.2
7-8 AM	1678	0.0	OFF	1678	0	0.00	0	68.6	68.6	68.6
8-9 AM	1218	0.0	OFF	1218	0	0.00	0	69.2	69.2	69.2
9-10 AM	937	0.0	OFF	937	0	0.00	0	69.6	69.6	69.6
10-11 AM	908	0.0	OFF	908	0	0.00	0	69.6	69.6	69.6
11AM-NOON	901	0.0	OFF	901	0	0.00	0	69.6	69.6	69.6
NOON-1PM	914	0.0	OFF	914	0	0.00	0	69.6	69.6	69.6
1-2 PM	763	0.0	OFF	763	0	0.00	0	69.8	69.8	69.8
2-3 PM	823	0.0	OFF	823	0	0.00	0	69.7	69.7	69.7
3-4 PM	976	0.0	OFF	976	0	0.00	0	69.5	69.5	69.5
4-5 PM	987	0.0	OFF	987	0	0.00	0	69.5	69.5	69.5
5-6 PM	952	0.0	OFF	952	0	0.00	0	69.6	69.6	69.6
6-7 PM	783	0.0	OFF	783	0	0.00	0	69.7	69.7	69.7
7-8 PM	578	0.0	1500	578	0	0.54	0	70.0	61.7	43.2
8-9 PM	424	0.0	1500	424	0	0.52	0	70.2	62.0	43.8
9-10 PM	392	0.0	1500	392	0	0.52	0	70.2	62.1	43.9
10-11 PM	262	0.0	1500	262	0	0.50	0	70.2	62.3	44.5
11PM-MID	200	0.0	1500	200	0	0.50	0	70.2	62.5	44.7

"OFF" INDICATES NO ROAD WORK (ALL LANES OPEN TO TRAFFIC)

----- SITE BREAKDOWN DELAYS -----	
BREAKDOWN DURATION (MINS)	0
RANGE OF QUEUE DELAY - MIN (VEH-H) MAX	0.0
AV BREAKDOWNS PER DAY	0.00
AV QUEUE DELAY/DAY (VEH-H)	0.0
AV TOTAL DELAY/DAY (VEH-H)	0.0

----- SITE ACCIDENT DELAYS -----	
BREAKDOWN DURATION (MINS)	0
RANGE OF QUEUE DELAY - MIN (VEH-H) MAX	0
AV BREAKDOWNS PER DAY	0
AV QUEUE DELAY/DAY (VEH-H)	0
AV TOTAL DELAY/DAY (VEH-H)	0

AVERAGE ACCIDENT NUMBERS (PIA/DAY)	
MAIN ROUTE WITHOUT WORKS	0.0124
MAIN ROUTE WITH WORKS	0.0122
'DIVERSION'	0.0000
<small>PIA: Personal Injury Accidents</small>	
IMPACTS ON ROAD USERS	
ROAD USER COSTS PER DAY	\$316
CONGESTED HOURS PER DAY*	0

*Delays Exceeding User-Specified Maximum

**USH 151: IH 39 TO STH 19 (DANE COUNTY)
NIGHTTIME 2 LANE CLOSURE
NO DIVERSION ROUTE (MAX QUEUE SEGMENT)**

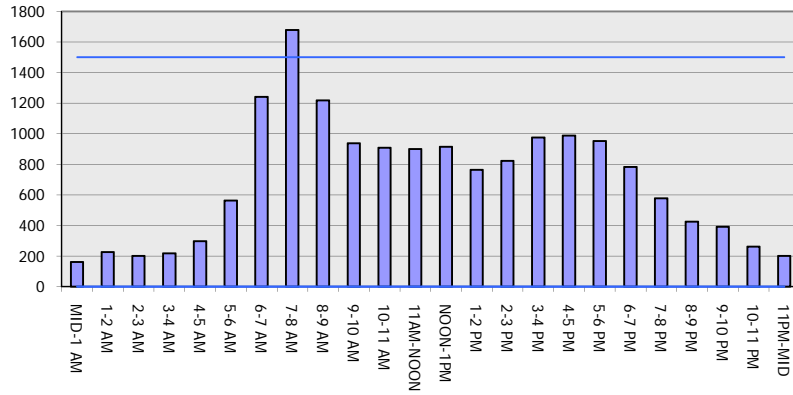
OCTOBER

Analyzed for 2009
Construction Season

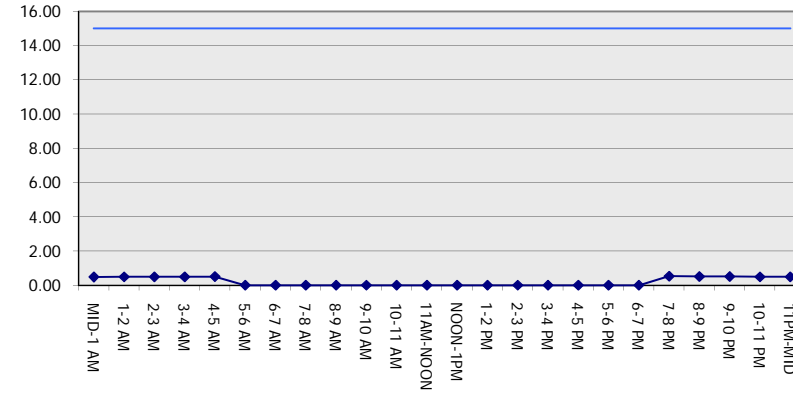
GRAPHICAL REPRESENTATION OF TRAFFIC MODEL INPUT AND OUTPUT

MON-THUR SOUTHBOUND DIRECTION

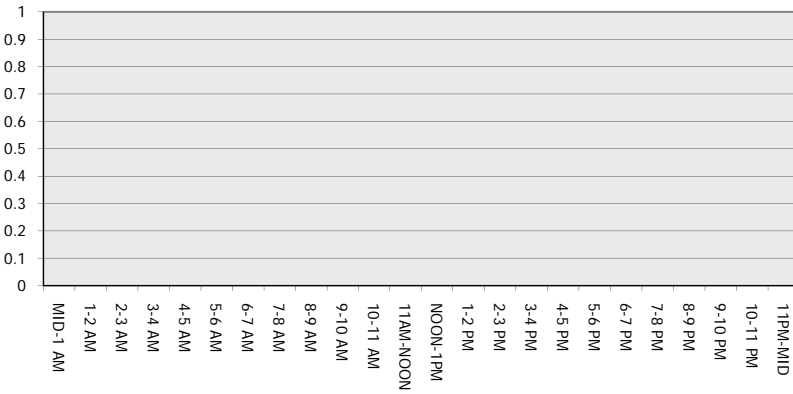
Main Route - Traffic Demand (Vehicles Per Hour)



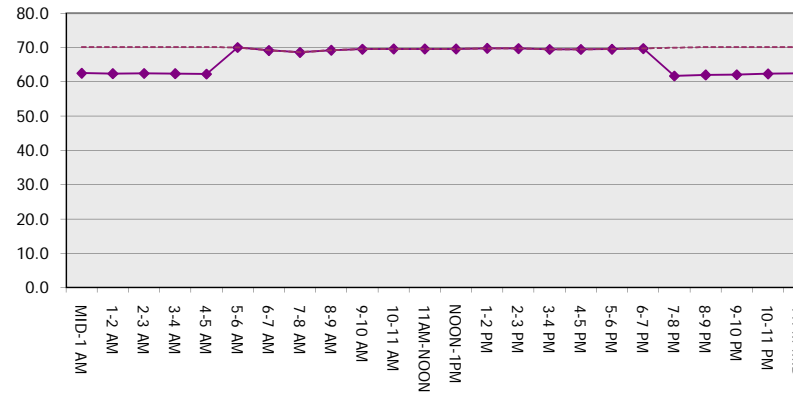
Main Route Average Delay Per Vehicle (Minutes)



Main Route - Average Queue Length (Vehicles)



Main Route - Average Speed (MPH)



USH 151: IH 39 TO STH 19 (DANE COUNTY) NIGHTTIME 2 LANE CLOSURE NO DIVERSION ROUTE (MAX QUEUE SEGMENT)	OCTOBER
	Analyzed for 2009 Construction Season

SUMMARY OF TRAFFIC MODEL OUTPUT

MON-THUR NORTHBOUND DIRECTION

TIME OF DAY	FLOWS AND CAPACITY IN VEH/HR						AVERAGE SPEEDS IN MPH			
	MAIN ROUTE		SITE CAPA CITY	FLOW		AV.DEL PER VEH (MINS)	AVERAGE QUEUE (VEH)	MAIN ROUTE		SITE
	DEMAND FLOW	PCT HEAVY		MAIN ROUTE	'DIVER TED'			WITHOUT WORK ZONE	WITH WORK ZONE	
MID-1 AM	202	0.0	1500	202	0	0.50	0	70.2	62.4	44.6
1-2 AM	125	0.0	1500	125	0	0.49	0	70.2	62.6	45.0
2-3 AM	98	0.0	1500	98	0	0.48	0	70.2	62.6	45.1
3-4 AM	90	0.0	1500	90	0	0.48	0	70.2	62.7	45.1
4-5 AM	126	0.0	1500	126	0	0.49	0	70.2	62.6	45.0
5-6 AM	333	0.0	OFF	333	0	0.00	0	70.2	70.2	70.2
6-7 AM	776	0.0	OFF	776	0	0.00	0	69.7	69.7	69.7
7-8 AM	1200	0.0	OFF	1200	0	0.00	0	69.2	69.2	69.2
8-9 AM	985	0.0	OFF	985	0	0.00	0	69.5	69.5	69.5
9-10 AM	952	0.0	OFF	952	0	0.00	0	69.6	69.6	69.6
10-11 AM	1080	0.0	OFF	1080	0	0.00	0	69.4	69.4	69.4
11AM-NOON	1350	0.0	OFF	1350	0	0.00	0	69.1	69.1	69.1
NOON-1PM	1594	0.0	OFF	1594	0	0.00	0	68.7	68.7	68.7
1-2 PM	1606	0.0	OFF	1606	0	0.00	0	68.7	68.7	68.7
2-3 PM	1915	0.0	OFF	1915	0	0.00	0	68.4	68.4	68.4
3-4 PM	2479	0.0	OFF	2479	0	0.00	0	67.6	67.6	67.6
4-5 PM	3159	0.0	OFF	3159	0	0.00	0	66.8	66.8	66.8
5-6 PM	2999	0.0	OFF	2999	0	0.00	0	67.0	67.0	67.0
6-7 PM	1884	0.0	OFF	1884	0	0.00	0	68.4	68.4	68.4
7-8 PM	1382	0.0	1500	1382	0	0.94	0	69.0	56.1	33.4
8-9 PM	1178	0.0	1500	1178	0	0.68	0	69.2	59.4	39.2
9-10 PM	1010	0.0	1500	1010	0	0.59	0	69.5	60.7	41.7
10-11 PM	596	0.0	1500	596	0	0.54	0	70.0	61.7	43.2
11PM-MID	379	0.0	1500	379	0	0.52	0	70.2	62.2	44.0

"OFF" INDICATES NO ROAD WORK (ALL LANES OPEN TO TRAFFIC)

----- SITE BREAKDOWN DELAYS -----	
BREAKDOWN DURATION (MINS)	0
RANGE OF QUEUE DELAY - MIN (VEH-H) MAX	0.0
AV BREAKDOWNS PER DAY	0.00
AV QUEUE DELAY/DAY (VEH-H)	0.0
AV TOTAL DELAY/DAY (VEH-H)	0.0

----- SITE ACCIDENT DELAYS -----	
BREAKDOWN DURATION (MINS)	0
RANGE OF QUEUE DELAY - MIN (VEH-H) MAX	0
AV BREAKDOWNS PER DAY	0
AV QUEUE DELAY/DAY (VEH-H)	0
AV TOTAL DELAY/DAY (VEH-H)	0

AVERAGE ACCIDENT NUMBERS (PIA/DAY)	
MAIN ROUTE WITHOUT WORKS	0.0206
MAIN ROUTE WITH WORKS	0.0202
'DIVERSION'	0.0000

PIA: Personal Injury Accidents

ECONOMIC IMPACT ON ROAD USERS	
ROAD USER COSTS PER DAY	\$734
CONGESTED HOURS PER DAY*	0

*Delays Exceeding User-Specified Maximum

**USH 151: IH 39 TO STH 19 (DANE COUNTY)
NIGHTTIME 2 LANE CLOSURE
NO DIVERSION ROUTE (MAX QUEUE SEGMENT)**

OCTOBER

Analyzed for 2009
Construction Season

**GRAPHICAL REPRESENTATION OF TRAFFIC MODEL INPUT AND OUTPUT
MON-THUR NORTHBOUND DIRECTION**

