

<b>USH 12/14: GAMMON RD TO VERONA RD (DANE COUNTY)</b> <b>NIGHTTIME CLOSURE</b> <b>NO DIVERSION ROUTE (MAX QUEUE METHOD)</b>	<b>OCTOBER</b>
	Analyzed for 2009 Construction Season

**SUMMARY OF TRAFFIC MODEL OUTPUT**

SUNDAY WESTBOUND DIRECTION

TIME OF DAY	FLOWS AND CAPACITY IN VEH/HR						AVERAGE SPEEDS IN MPH			
	MAIN ROUTE		SITE CAPA CITY	FLOW		AV.DEL PER VEH (MINS)	AVERAGE QUEUE (VEH)	MAIN ROUTE		SITE
	DEMAND FLOW	PCT HEAVY		MAIN ROUTE	'DIVER TED'			WITHOUT WORK ZONE	WITH WORK ZONE	
MID-1 AM	628	0.0	1500	628	0	0.41	0	60.2	52.6	43.0
1-2 AM	437	0.0	1500	437	0	0.38	0	60.2	53.0	43.7
2-3 AM	281	0.0	1500	281	0	0.36	0	60.2	53.3	44.3
3-4 AM	247	0.0	1500	247	0	0.36	0	60.2	53.3	44.5
4-5 AM	153	0.0	1500	153	0	0.35	0	60.2	53.6	44.9
5-6 AM	107	0.0	1500	107	0	0.34	0	60.2	53.7	45.1
6-7 AM	149	0.0	1500	149	0	0.35	0	60.2	53.6	44.9
7-8 AM	264	0.0	1500	264	0	0.36	0	60.2	53.3	44.4
8-9 AM	520	0.0	1500	520	0	0.39	0	60.2	52.8	43.4
9-10 AM	858	0.0	OFF	858	0	0.00	0	60.2	60.2	60.2
10-11 AM	1148	0.0	OFF	1148	0	0.00	0	60.2	60.2	60.2
11AM-NOON	1660	0.0	OFF	1660	0	0.00	0	60.2	60.2	60.2
NOON-1PM	1959	0.0	OFF	1959	0	0.00	0	60.2	60.2	60.2
1-2 PM	2240	0.0	OFF	2240	0	0.00	0	60.2	60.2	60.2
2-3 PM	2185	0.0	OFF	2185	0	0.00	0	60.2	60.2	60.2
3-4 PM	2089	0.0	OFF	2089	0	0.00	0	60.2	60.2	60.2
4-5 PM	2158	0.0	OFF	2158	0	0.00	0	60.2	60.2	60.2
5-6 PM	2060	0.0	OFF	2060	0	0.00	0	60.2	60.2	60.2
6-7 PM	1766	0.0	OFF	1766	0	0.00	0	60.2	60.2	60.2
7-8 PM	1474	0.0	1499	1474	0	1.39	13	60.2	40.2	31.9
8-9 PM	996	0.0	1500	996	0	0.45	0	60.2	51.9	41.7
9-10 PM	788	0.0	1500	788	0	0.43	0	60.2	52.3	42.4
10-11 PM	608	0.0	1500	608	0	0.40	0	60.2	52.6	43.1
11PM-MID	416	0.0	1500	416	0	0.38	0	60.2	53.0	43.8

"OFF" INDICATES NO ROAD WORK (ALL LANES OPEN TO TRAFFIC)

*----- SITE BREAKDOWN DELAYS -----*	
BREAKDOWN DURATION (MINS)	0
RANGE OF QUEUE DELAY - MIN (VEH-H) MAX	0.0
AV BREAKDOWNS PER DAY	0.00
AV QUEUE DELAY/DAY (VEH-H)	0.0
AV TOTAL DELAY/DAY (VEH-H)	0.0

*----- SITE ACCIDENT DELAYS -----*	
BREAKDOWN DURATION (MINS)	0
RANGE OF QUEUE DELAY - MIN (VEH-H) MAX	0
AV BREAKDOWNS PER DAY	0
AV QUEUE DELAY/DAY (VEH-H)	0
AV TOTAL DELAY/DAY (VEH-H)	0

AVERAGE ACCIDENT NUMBERS (PIA/DAY)	
MAIN ROUTE WITHOUT WORKS	0.0112
MAIN ROUTE WITH WORKS	0.0108
'DIVERSION'	0.0000
<small>PIA: Personal Injury Accidents</small>	
IMPACTS ON ROAD USERS	
ROAD USER COSTS PER DAY	\$1,131
CONGESTED HOURS PER DAY*	0

\*Delays Exceeding User-Specified Maximum

**USH 12/14: GAMMON RD TO VERONA RD (DANE COUNTY)  
NIGHTTIME CLOSURE  
NO DIVERSION ROUTE (MAX QUEUE METHOD)**

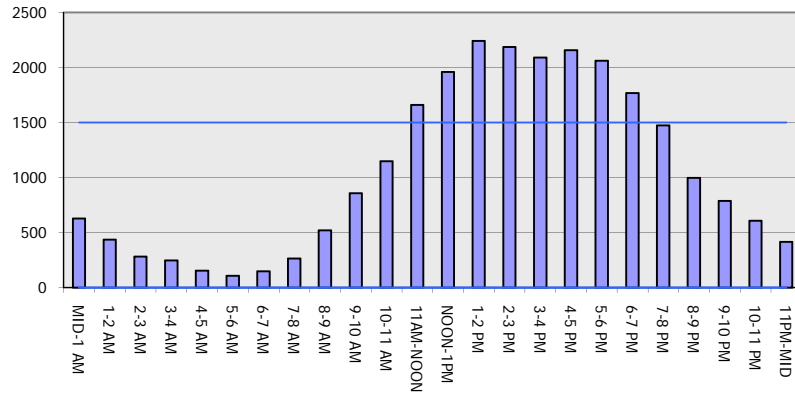
**OCTOBER**

Analyzed for 2009  
Construction Season

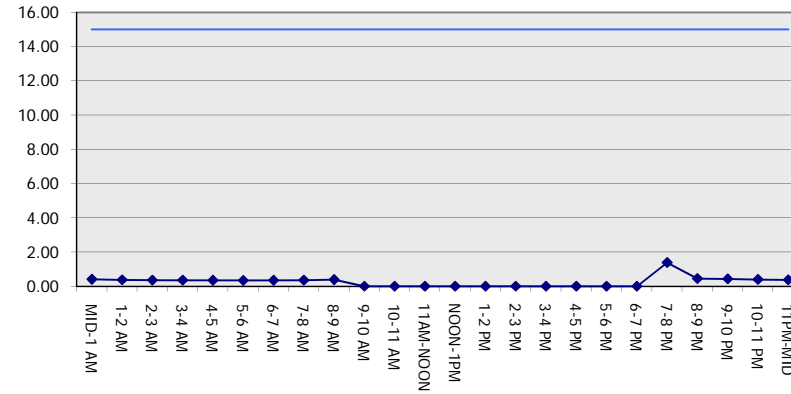
**GRAPHICAL REPRESENTATION OF TRAFFIC MODEL INPUT AND OUTPUT**

**SUNDAY WESTBOUND DIRECTION**

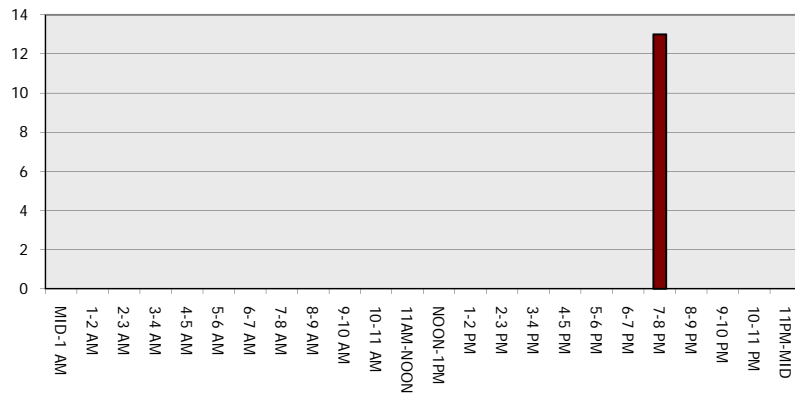
**Main Route - Traffic Demand (Vehicles Per Hour)**



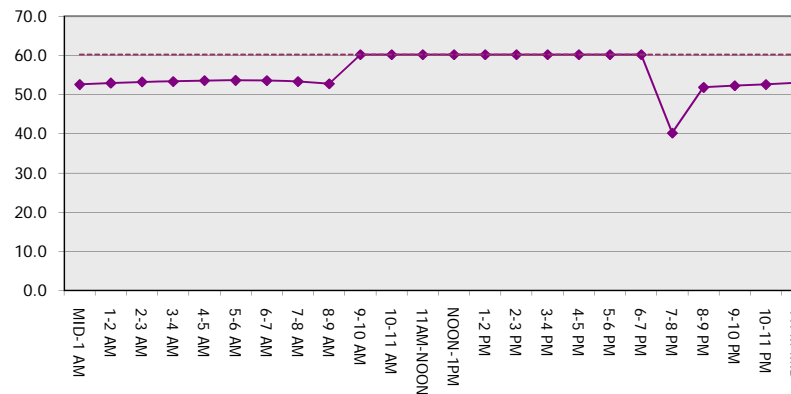
**Main Route Average Delay Per Vehicle (Minutes)**



**Main Route - Average Queue Length (Vehicles)**



**Main Route - Average Speed (MPH)**



<b>USH 12/14: GAMMON RD TO VERONA RD (DANE COUNTY)</b> <b>NIGHTTIME CLOSURE</b> <b>NO DIVERSION ROUTE (MAX QUEUE METHOD)</b>	<b>OCTOBER</b>
	Analyzed for 2009 Construction Season

**SUMMARY OF TRAFFIC MODEL OUTPUT**

SUNDAY EASTBOUND DIRECTION

TIME OF DAY	FLOWS AND CAPACITY IN VEH/HR						AVERAGE SPEEDS IN MPH			
	MAIN ROUTE		SITE CAPA CITY	FLOW		AV.DEL PER VEH (MINS)	AVERAGE QUEUE (VEH)	MAIN ROUTE		SITE
	DEMAND FLOW	PCT HEAVY		MAIN ROUTE	'DIVER TED'			WITHOUT WORK ZONE	WITH WORK ZONE	
MID-1 AM	689	0.0	1500	689	0	0.41	0	60.2	52.5	42.8
1-2 AM	413	0.0	1500	413	0	0.38	0	60.2	53.0	43.8
2-3 AM	265	0.0	1500	265	0	0.36	0	60.2	53.3	44.4
3-4 AM	323	0.0	1500	323	0	0.37	0	60.2	53.2	44.2
4-5 AM	159	0.0	1500	159	0	0.35	0	60.2	53.5	44.8
5-6 AM	98	0.0	1500	98	0	0.34	0	60.2	53.7	45.1
6-7 AM	125	0.0	1500	125	0	0.34	0	60.2	53.7	45.0
7-8 AM	273	0.0	1500	273	0	0.36	0	60.2	53.3	44.4
8-9 AM	494	0.0	1500	494	0	0.39	0	60.2	52.8	43.5
9-10 AM	809	0.0	OFF	809	0	0.00	0	60.2	60.2	60.2
10-11 AM	1294	0.0	OFF	1294	0	0.00	0	60.2	60.2	60.2
11AM-NOON	1718	0.0	OFF	1718	0	0.00	0	60.2	60.2	60.2
NOON-1PM	2108	0.0	OFF	2108	0	0.00	0	60.2	60.2	60.2
1-2 PM	2295	0.0	OFF	2295	0	0.00	0	60.2	60.2	60.2
2-3 PM	2345	0.0	OFF	2345	0	0.00	0	60.2	60.2	60.2
3-4 PM	2369	0.0	OFF	2369	0	0.00	0	60.2	60.2	60.2
4-5 PM	2470	0.0	OFF	2470	0	0.00	0	60.2	60.2	60.2
5-6 PM	2475	0.0	OFF	2475	0	0.00	0	60.2	60.2	60.2
6-7 PM	2085	0.0	OFF	2085	0	0.00	0	60.2	60.2	60.2
7-8 PM	1589	0.0	1499	1589	0	3.49	71	60.2	26.8	30.8
8-9 PM	1241	0.0	1499	1241	0	1.31	24	60.2	40.9	36.5
9-10 PM	811	0.0	1500	811	0	0.43	0	60.2	52.2	42.4
10-11 PM	649	0.0	1500	649	0	0.41	0	60.2	52.5	43.0
11PM-MID	418	0.0	1500	418	0	0.38	0	60.2	53.0	43.8

"OFF" INDICATES NO ROAD WORK (ALL LANES OPEN TO TRAFFIC)

*----- SITE BREAKDOWN DELAYS -----*	
BREAKDOWN DURATION (MINS)	0
RANGE OF QUEUE DELAY - MIN (VEH-H) MAX	0.0
AV BREAKDOWNS PER DAY	0.00
AV QUEUE DELAY/DAY (VEH-H)	0.0
AV TOTAL DELAY/DAY (VEH-H)	0.0

*----- SITE ACCIDENT DELAYS -----*	
BREAKDOWN DURATION (MINS)	0
RANGE OF QUEUE DELAY - MIN (VEH-H) MAX	0
AV BREAKDOWNS PER DAY	0
AV QUEUE DELAY/DAY (VEH-H)	0
AV TOTAL DELAY/DAY (VEH-H)	0

AVERAGE ACCIDENT NUMBERS (PIA/DAY)	
MAIN ROUTE WITHOUT WORKS	0.0123
MAIN ROUTE WITH WORKS	0.0118
'DIVERSION'	0.0000

PIA: Personal Injury Accidents

ECONOMIC IMPACT ON ROAD USERS	
ROAD USER COSTS PER DAY	\$2,378
CONGESTED HOURS PER DAY*	0

\*Delays Exceeding User-Specified Maximum

**USH 12/14: GAMMON RD TO VERONA RD (DANE COUNTY)  
NIGHTTIME CLOSURE  
NO DIVERSION ROUTE (MAX QUEUE METHOD)**

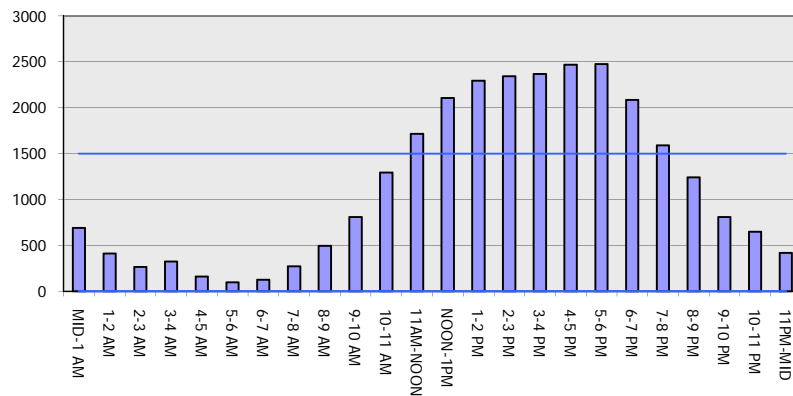
**OCTOBER**

Analyzed for 2009  
Construction Season

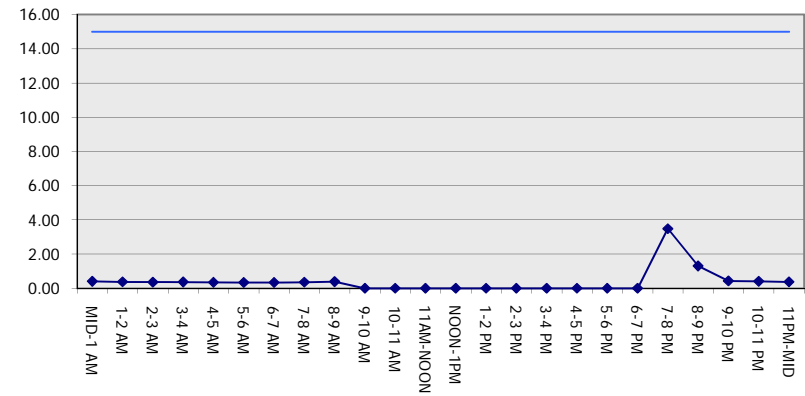
**GRAPHICAL REPRESENTATION OF TRAFFIC MODEL INPUT AND OUTPUT**

**SUNDAY EASTBOUND DIRECTION**

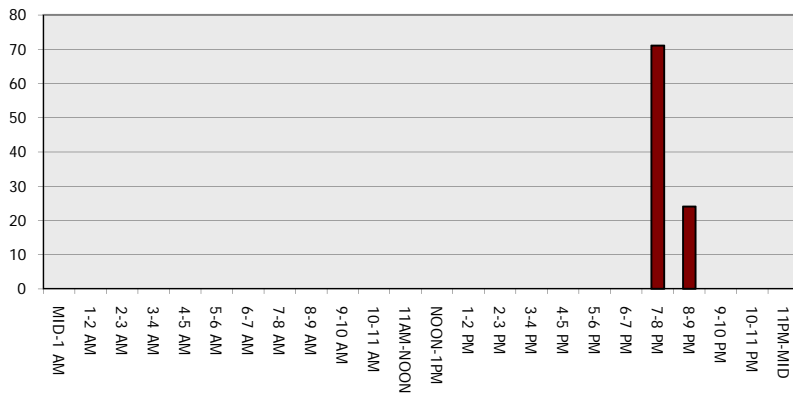
**Main Route - Traffic Demand (Vehicles Per Hour)**



**Main Route Average Delay Per Vehicle (Minutes)**



**Main Route - Average Queue Length (Vehicles)**



**Main Route - Average Speed (MPH)**

