

<b>USH 12/14: GAMMON RD TO VERONA RD (DANE COUNTY)</b> <b>NIGHTTIME CLOSURE</b> <b>NO DIVERSION ROUTE (MAX QUEUE METHOD)</b>	<b>OCTOBER</b>
	Analyzed for 2009 Construction Season

**SUMMARY OF TRAFFIC MODEL OUTPUT**

SATURDAY WESTBOUND DIRECTION

TIME OF DAY	FLOWS AND CAPACITY IN VEH/HR							AVERAGE SPEEDS IN MPH			
	MAIN ROUTE		SITE CAPA CITY	FLOW		AV.DEL PER VEH (MINS)	AVERAGE QUEUE (VEH)	MAIN ROUTE		SITE	
	DEMAND FLOW	PCT HEAVY		MAIN ROUTE	'DIVER TED'			WITHOUT WORK ZONE	WITH WORK ZONE		
MID-1 AM	622	0.0	1500	622	0	0.41	0	60.2	52.6	43.0	
1-2 AM	407	0.0	1500	407	0	0.38	0	60.2	53.0	43.8	
2-3 AM	250	0.0	1500	250	0	0.36	0	60.2	53.3	44.5	
3-4 AM	203	0.0	1500	203	0	0.35	0	60.2	53.5	44.6	
4-5 AM	145	0.0	1500	145	0	0.35	0	60.2	53.6	44.9	
5-6 AM	156	0.0	1500	156	0	0.35	0	60.2	53.6	44.8	
6-7 AM	271	0.0	1500	271	0	0.36	0	60.2	53.3	44.4	
7-8 AM	554	0.0	1500	554	0	0.40	0	60.2	52.7	43.3	
8-9 AM	1032	0.0	OFF	1032	0	0.00	0	60.2	60.2	60.2	
9-10 AM	1579	0.0	OFF	1579	0	0.00	0	60.2	60.2	60.2	
10-11 AM	1983	0.0	OFF	1983	0	0.00	0	60.2	60.2	60.2	
11AM-NOON	2439	0.0	OFF	2439	0	0.00	0	60.2	60.2	60.2	
NOON-1PM	2610	0.0	OFF	2610	0	0.00	0	59.7	59.7	59.7	
1-2 PM	2694	0.0	OFF	2694	0	0.00	0	58.9	58.9	58.9	
2-3 PM	2579	0.0	OFF	2579	0	0.00	0	60.1	60.1	60.1	
3-4 PM	2590	0.0	OFF	2590	0	0.00	0	60.0	60.0	60.0	
4-5 PM	2673	0.0	OFF	2673	0	0.00	0	59.1	59.1	59.1	
5-6 PM	2564	0.0	OFF	2564	0	0.00	0	60.2	60.2	60.2	
6-7 PM	2252	0.0	1499	1916	336	11.66+	310	60.2	12.3	30.8	
7-8 PM	1921	0.0	1500	1500	421	16.23+	413	60.2	9.9	30.8	
8-9 PM	1552	0.0	1500	1480	72	16.08+	409	60.2	9.9	30.8	
9-10 PM	1181	0.0	1499	1181	0	9.30	252	60.2	14.2	32.6	
10-11 PM	1012	0.0	1500	1012	0	0.62	6	60.2	49.2	41.6	
11PM-MID	848	0.0	1500	848	0	0.43	0	60.2	52.2	42.2	

"OFF" INDICATES NO ROAD WORK (ALL LANES OPEN TO TRAFFIC)

+ INDICATES QUEUEING EXCEEDS USER-SPECIFIED MAXIMUM LIMIT

*----- SITE BREAKDOWN DELAYS -----*	
BREAKDOWN DURATION (MINS)	0
RANGE OF QUEUE DELAY - MIN (VEH-H) MAX	0.0
AV BREAKDOWNS PER DAY	0.00
AV QUEUE DELAY/DAY (VEH-H)	0.0
AV TOTAL DELAY/DAY (VEH-H)	0.0

*----- SITE ACCIDENT DELAYS -----*	
BREAKDOWN DURATION (MINS)	0
RANGE OF QUEUE DELAY - MIN (VEH-H) MAX	0
AV BREAKDOWNS PER DAY	0
AV QUEUE DELAY/DAY (VEH-H)	0
AV TOTAL DELAY/DAY (VEH-H)	0

AVERAGE ACCIDENT NUMBERS (PIA/DAY)	
MAIN ROUTE WITHOUT WORKS	0.0152
MAIN ROUTE WITH WORKS	0.0141
'DIVERSION'	0.0009
<small>PIA: Personal Injury Accidents</small>	
IMPACTS ON ROAD USERS	
ROAD USER COSTS PER DAY	\$25,787
CONGESTED HOURS PER DAY*	3

\*Delays Exceeding User-Specified Maximum

**USH 12/14: GAMMON RD TO VERONA RD (DANE COUNTY)  
NIGHTTIME CLOSURE  
NO DIVERSION ROUTE (MAX QUEUE METHOD)**

**OCTOBER**

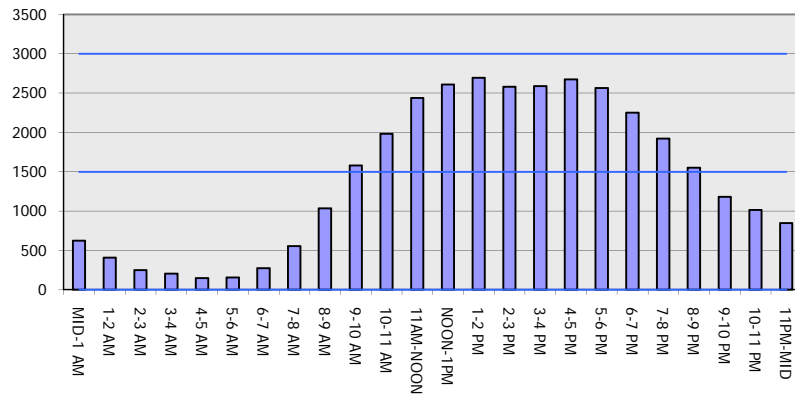
Analyzed for 2009  
Construction Season

**GRAPHICAL REPRESENTATION OF TRAFFIC MODEL INPUT AND OUTPUT**

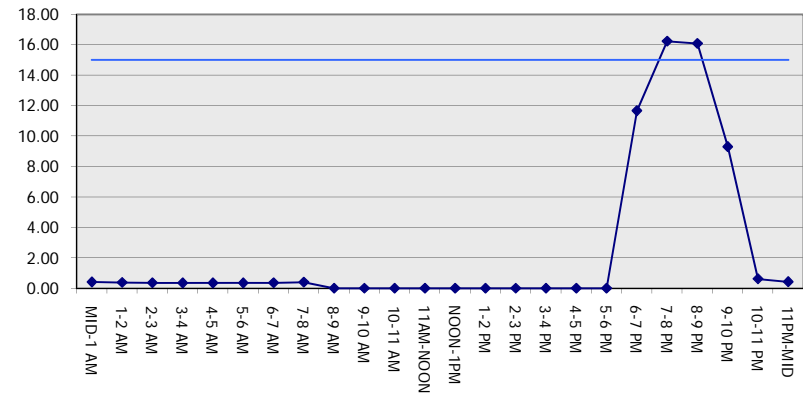
**SATURDAY**

**WESTBOUND DIRECTION**

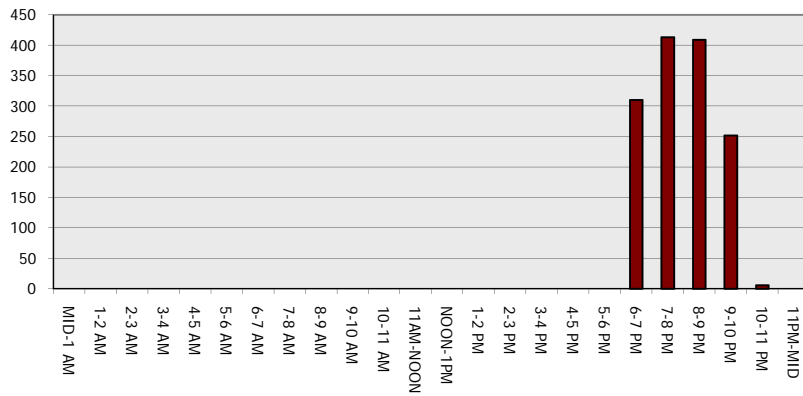
**Main Route - Traffic Demand (Vehicles Per Hour)**



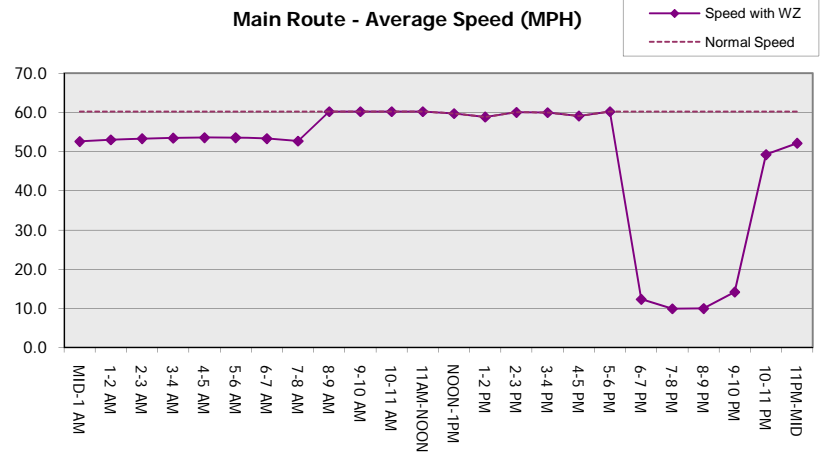
**Main Route Average Delay Per Vehicle (Minutes)**



**Main Route - Average Queue Length (Vehicles)**



**Main Route - Average Speed (MPH)**



<b>USH 12/14: GAMMON RD TO VERONA RD (DANE COUNTY)</b> <b>NIGHTTIME CLOSURE</b> <b>NO DIVERSION ROUTE (MAX QUEUE METHOD)</b>	<b>OCTOBER</b>
	Analyzed for 2009 Construction Season

**SUMMARY OF TRAFFIC MODEL OUTPUT**

SATURDAY EASTBOUND DIRECTION

TIME OF DAY	FLOWS AND CAPACITY IN VEH/HR						AVERAGE SPEEDS IN MPH			
	MAIN ROUTE		SITE CAPA CITY	FLOW		AV.DEL PER VEH (MINS)	AVERAGE QUEUE (VEH)	MAIN ROUTE		SITE
	DEMAND FLOW	PCT HEAVY		MAIN ROUTE	'DIVER TED'			WITHOUT WORK ZONE	WITH WORK ZONE	
MID-1 AM	807	0.0	1500	807	0	0.43	0	60.2	52.2	42.4
1-2 AM	404	0.0	1500	404	0	0.38	0	60.2	53.0	43.9
2-3 AM	226	0.0	1500	226	0	0.36	0	60.2	53.4	44.6
3-4 AM	229	0.0	1500	229	0	0.36	0	60.2	53.4	44.6
4-5 AM	150	0.0	1500	150	0	0.35	0	60.2	53.6	44.9
5-6 AM	143	0.0	1500	143	0	0.35	0	60.2	53.6	44.9
6-7 AM	236	0.0	1500	236	0	0.36	0	60.2	53.4	44.5
7-8 AM	504	0.0	1500	504	0	0.39	0	60.2	52.8	43.5
8-9 AM	971	0.0	OFF	971	0	0.00	0	60.2	60.2	60.2
9-10 AM	1512	0.0	OFF	1512	0	0.00	0	60.2	60.2	60.2
10-11 AM	1939	0.0	OFF	1939	0	0.00	0	60.2	60.2	60.2
11AM-NOON	2187	0.0	OFF	2187	0	0.00	0	60.2	60.2	60.2
NOON-1PM	2350	0.0	OFF	2350	0	0.00	0	60.2	60.2	60.2
1-2 PM	2390	0.0	OFF	2390	0	0.00	0	60.2	60.2	60.2
2-3 PM	2389	0.0	OFF	2389	0	0.00	0	60.2	60.2	60.2
3-4 PM	2489	0.0	OFF	2489	0	0.00	0	60.2	60.2	60.2
4-5 PM	2660	0.0	OFF	2660	0	0.00	0	59.2	59.2	59.2
5-6 PM	2485	0.0	OFF	2485	0	0.00	0	60.2	60.2	60.2
6-7 PM	2364	0.0	1499	1958	406	12.27+	321	60.2	11.8	30.8
7-8 PM	2036	0.0	1499	1496	540	16.24+	413	60.2	9.9	30.8
8-9 PM	1691	0.0	1499	1468	223	16.11+	410	60.2	9.9	30.8
9-10 PM	1361	0.0	1499	1361	0	14.46+	367	60.2	10.4	30.8
10-11 PM	1202	0.0	1499	1202	0	4.98	147	60.2	21.6	33.6
11PM-MID	955	0.0	1500	955	0	0.45	0	60.2	51.9	41.9

"OFF" INDICATES NO ROAD WORK (ALL LANES OPEN TO TRAFFIC)

+ INDICATES QUEUEING EXCEEDS USER-SPECIFIED MAXIMUM LIMIT

*----- SITE BREAKDOWN DELAYS -----*	
BREAKDOWN DURATION (MINS)	0
RANGE OF QUEUE DELAY - MIN (VEH-H) MAX	0.0
AV BREAKDOWNS PER DAY	0.00
AV QUEUE DELAY/DAY (VEH-H)	0.0
AV TOTAL DELAY/DAY (VEH-H)	0.0

*----- SITE ACCIDENT DELAYS -----*	
BREAKDOWN DURATION (MINS)	0
RANGE OF QUEUE DELAY - MIN (VEH-H) MAX	0
AV BREAKDOWNS PER DAY	0
AV QUEUE DELAY/DAY (VEH-H)	0
AV TOTAL DELAY/DAY (VEH-H)	0

AVERAGE ACCIDENT NUMBERS (PIA/DAY)	
MAIN ROUTE WITHOUT WORKS	0.0150
MAIN ROUTE WITH WORKS	0.0138
'DIVERSION'	0.0012

PIA: Personal Injury Accidents

ECONOMIC IMPACT ON ROAD USERS	
ROAD USER COSTS PER DAY	\$31,491
CONGESTED HOURS PER DAY*	4

\*Delays Exceeding User-Specified Maximum

**USH 12/14: GAMMON RD TO VERONA RD (DANE COUNTY)  
NIGHTTIME CLOSURE  
NO DIVERSION ROUTE (MAX QUEUE METHOD)**

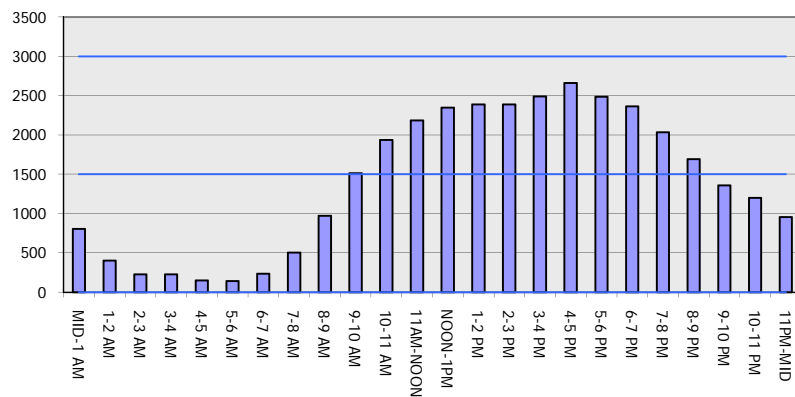
**OCTOBER**

Analyzed for 2009  
Construction Season

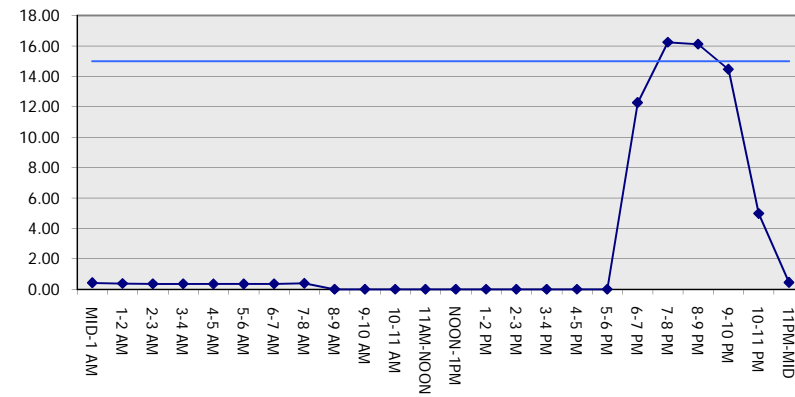
**GRAPHICAL REPRESENTATION OF TRAFFIC MODEL INPUT AND OUTPUT**

**SATURDAY EASTBOUND DIRECTION**

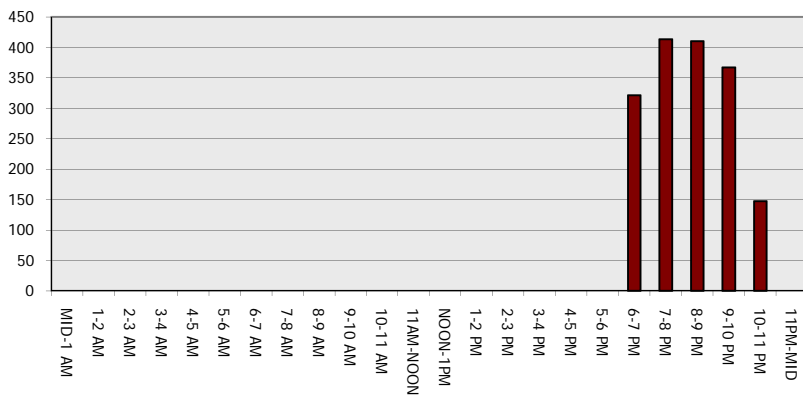
**Main Route - Traffic Demand (Vehicles Per Hour)**



**Main Route Average Delay Per Vehicle (Minutes)**



**Main Route - Average Queue Length (Vehicles)**



**Main Route - Average Speed (MPH)**

