

USH 12/14: GAMMON RD TO VERONA RD (DANE COUNTY) NIGHTTIME CLOSURE NO DIVERSION ROUTE (MAX QUEUE METHOD)	OCTOBER
	Analyzed for 2009 Construction Season

SUMMARY OF TRAFFIC MODEL OUTPUT

MON-THUR WESTBOUND DIRECTION

TIME OF DAY	FLOWS AND CAPACITY IN VEH/HR						AVERAGE SPEEDS IN MPH			
	MAIN ROUTE		SITE CAPA CITY	FLOW		AV.DEL PER VEH (MINS)	AVERAGE QUEUE (VEH)	MAIN ROUTE		SITE
	DEMAND FLOW	PCT HEAVY		MAIN ROUTE	'DIVER TED'			WITHOUT WORK ZONE	WITH WORK ZONE	
MID-1 AM	295	0.0	1500	295	0	0.36	0	60.2	53.3	44.3
1-2 AM	174	0.0	1500	174	0	0.35	0	60.2	53.5	44.8
2-3 AM	107	0.0	1500	107	0	0.34	0	60.2	53.7	45.1
3-4 AM	83	0.0	1500	83	0	0.34	0	60.2	53.7	45.1
4-5 AM	101	0.0	1500	101	0	0.34	0	60.2	53.7	45.1
5-6 AM	221	0.0	OFF	221	0	0.00	0	60.2	60.2	60.2
6-7 AM	680	0.0	OFF	680	0	0.00	0	60.2	60.2	60.2
7-8 AM	2264	0.0	OFF	2264	0	0.00	0	60.2	60.2	60.2
8-9 AM	4145	0.0	OFF	4145	0	0.00	0	44.0	44.0	44.0
9-10 AM	3436	0.0	OFF	3436	0	0.00	0	51.3	51.3	51.3
10-11 AM	2283	0.0	OFF	2283	0	0.00	0	60.2	60.2	60.2
11AM-NOON	2151	0.0	OFF	2151	0	0.00	0	60.2	60.2	60.2
NOON-1PM	2421	0.0	OFF	2421	0	0.00	0	60.2	60.2	60.2
1-2 PM	2685	0.0	OFF	2685	0	0.00	0	59.0	59.0	59.0
2-3 PM	2586	0.0	OFF	2586	0	0.00	0	60.0	60.0	60.0
3-4 PM	2761	0.0	OFF	2761	0	0.00	0	58.2	58.2	58.2
4-5 PM	3164	0.0	OFF	3164	0	0.00	0	54.1	54.1	54.1
5-6 PM	3926	0.0	OFF	3926	0	0.00	0	46.3	46.3	46.3
6-7 PM	3876	0.0	OFF	3876	0	0.00	0	46.8	46.8	46.8
7-8 PM	2550	0.0	1499	1726	824	14.00+	364	60.2	10.7	35.5
8-9 PM	1663	0.0	1499	1663	0	13.62+	347	60.2	10.9	30.8
9-10 PM	1290	0.0	1499	1290	0	11.91+	304	60.2	11.8	30.9
10-11 PM	1005	0.0	1500	1005	0	1.34	39	60.2	40.7	39.9
11PM-MID	607	0.0	1500	607	0	0.40	0	60.2	52.6	43.1

"OFF" INDICATES NO ROAD WORK (ALL LANES OPEN TO TRAFFIC)

+ INDICATES QUEUEING EXCEEDS USER-SPECIFIED MAXIMUM LIMIT

----- SITE BREAKDOWN DELAYS -----	
BREAKDOWN DURATION (MINS)	0
RANGE OF QUEUE DELAY - MIN (VEH-H) MAX	0.0
AV BREAKDOWNS PER DAY	0.00
AV QUEUE DELAY/DAY (VEH-H)	0.0
AV TOTAL DELAY/DAY (VEH-H)	0.0

----- SITE ACCIDENT DELAYS -----	
BREAKDOWN DURATION (MINS)	0
RANGE OF QUEUE DELAY - MIN (VEH-H) MAX	0
AV BREAKDOWNS PER DAY	0
AV QUEUE DELAY/DAY (VEH-H)	0
AV TOTAL DELAY/DAY (VEH-H)	0

AVERAGE ACCIDENT NUMBERS (PIA/DAY)	
MAIN ROUTE WITHOUT WORKS	0.0198
MAIN ROUTE WITH WORKS	0.0190
'DIVERSION'	0.0009
<small>PIA: Personal Injury Accidents</small>	
IMPACTS ON ROAD USERS	
ROAD USER COSTS PER DAY	\$17,191
CONGESTED HOURS PER DAY*	3

*Delays Exceeding User-Specified Maximum

**USH 12/14: GAMMON RD TO VERONA RD (DANE COUNTY)
NIGHTTIME CLOSURE
NO DIVERSION ROUTE (MAX QUEUE METHOD)**

OCTOBER

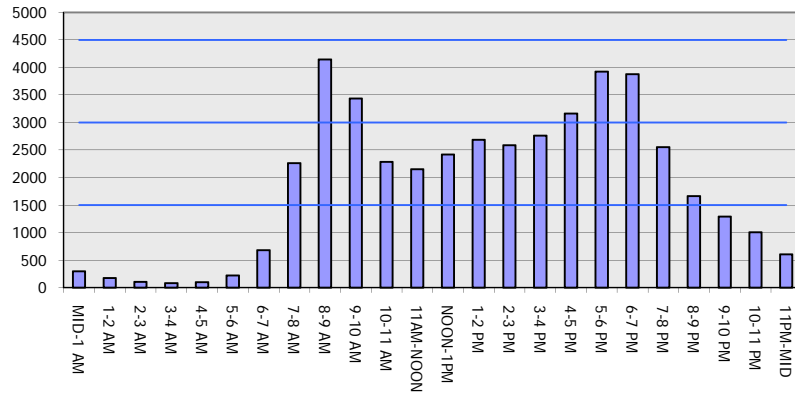
Analyzed for 2009
Construction Season

GRAPHICAL REPRESENTATION OF TRAFFIC MODEL INPUT AND OUTPUT

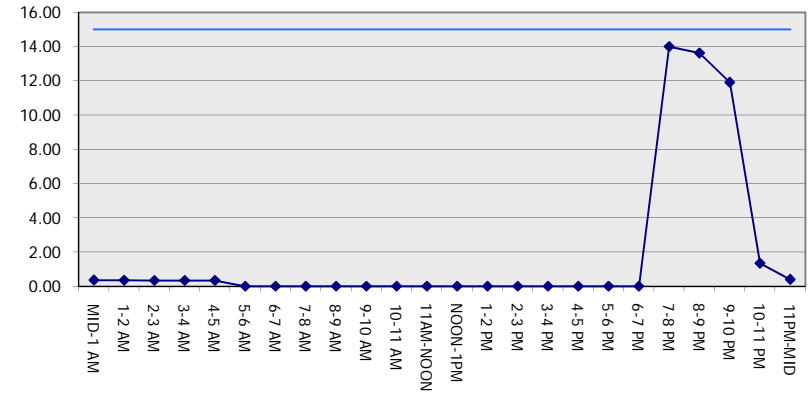
MON-THUR

WESTBOUND DIRECTION

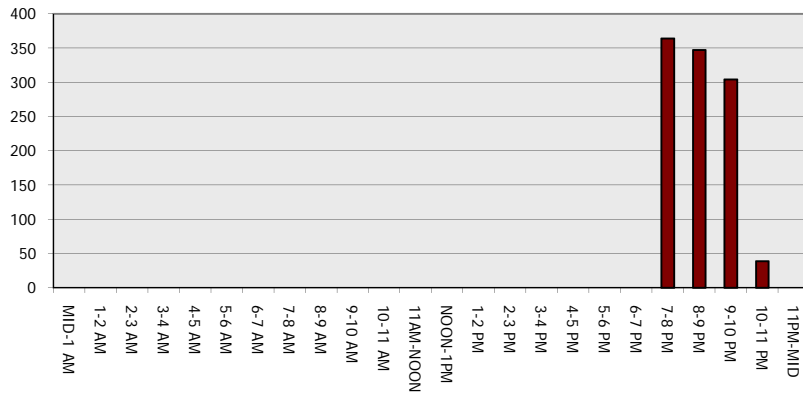
Main Route - Traffic Demand (Vehicles Per Hour)



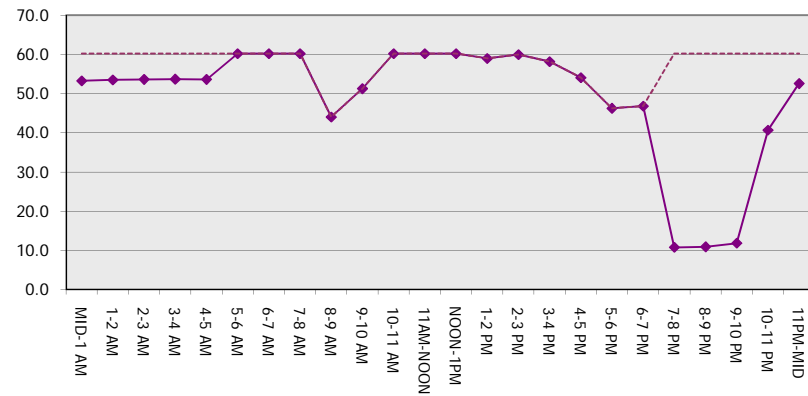
Main Route Average Delay Per Vehicle (Minutes)



Main Route - Average Queue Length (Vehicles)



Main Route - Average Speed (MPH)



USH 12/14: GAMMON RD TO VERONA RD (DANE COUNTY) NIGHTTIME CLOSURE NO DIVERSION ROUTE (MAX QUEUE METHOD)	OCTOBER
	Analyzed for 2009 Construction Season

SUMMARY OF TRAFFIC MODEL OUTPUT

MON-THUR EASTBOUND DIRECTION

TIME OF DAY	FLOWS AND CAPACITY IN VEH/HR							AVERAGE SPEEDS IN MPH		
	MAIN ROUTE		SITE CAPA CITY	FLOW		AV.DEL PER VEH (MINS)	AVERAGE QUEUE (VEH)	MAIN ROUTE		SITE
	DEMAND FLOW	PCT HEAVY		MAIN ROUTE	'DIVER TED'			WITHOUT WORK ZONE	WITH WORK ZONE	
MID-1 AM	421	0.0	1500	421	0	0.38	0	60.2	53.0	43.8
1-2 AM	196	0.0	1500	196	0	0.35	0	60.2	53.5	44.7
2-3 AM	130	0.0	1500	130	0	0.34	0	60.2	53.6	45.0
3-4 AM	96	0.0	1500	96	0	0.34	0	60.2	53.7	45.1
4-5 AM	103	0.0	1500	103	0	0.34	0	60.2	53.7	45.1
5-6 AM	201	0.0	OFF	201	0	0.00	0	60.2	60.2	60.2
6-7 AM	708	0.0	OFF	708	0	0.00	0	60.2	60.2	60.2
7-8 AM	1959	0.0	OFF	1959	0	0.00	0	60.2	60.2	60.2
8-9 AM	3661	0.0	OFF	3661	0	0.00	0	49.0	49.0	49.0
9-10 AM	3039	0.0	OFF	3039	0	0.00	0	55.4	55.4	55.4
10-11 AM	2080	0.0	OFF	2080	0	0.00	0	60.2	60.2	60.2
11AM-NOON	2063	0.0	OFF	2063	0	0.00	0	60.2	60.2	60.2
NOON-1PM	2513	0.0	OFF	2513	0	0.00	0	60.2	60.2	60.2
1-2 PM	2650	0.0	OFF	2650	0	0.00	0	59.4	59.4	59.4
2-3 PM	2549	0.0	OFF	2549	0	0.00	0	60.2	60.2	60.2
3-4 PM	2791	0.0	OFF	2791	0	0.00	0	57.9	57.9	57.9
4-5 PM	3445	0.0	OFF	3445	0	0.00	0	51.2	51.2	51.2
5-6 PM	4178	0.0	OFF	4178	0	0.00	0	43.7	43.7	43.7
6-7 PM	3738	0.0	OFF	3738	0	0.00	0	48.2	48.2	48.2
7-8 PM	2497	0.0	1499	1787	710	13.63+	352	60.2	10.9	34.5
8-9 PM	1758	0.0	1499	1600	158	15.26+	388	60.2	10.2	30.8
9-10 PM	1428	0.0	1499	1428	0	14.62+	370	60.2	10.4	30.8
10-11 PM	1125	0.0	1499	1125	0	4.38	153	60.2	23.4	35.6
11PM-MID	714	0.0	1500	714	0	0.42	0	60.2	52.4	42.7

"OFF" INDICATES NO ROAD WORK (ALL LANES OPEN TO TRAFFIC)

+ INDICATES QUEUEING EXCEEDS USER-SPECIFIED MAXIMUM LIMIT

BREAKDOWN DURATION (MINS)	0
RANGE OF QUEUE DELAY - MIN (VEH-H) MAX	0.0
AV BREAKDOWNS PER DAY	0.00
AV QUEUE DELAY/DAY (VEH-H)	0.0
AV TOTAL DELAY/DAY (VEH-H)	0.0

BREAKDOWN DURATION (MINS)	0
RANGE OF QUEUE DELAY - MIN (VEH-H) MAX	0
AV BREAKDOWNS PER DAY	0
AV QUEUE DELAY/DAY (VEH-H)	0
AV TOTAL DELAY/DAY (VEH-H)	0

MAIN ROUTE WITHOUT WORKS	0.0196
MAIN ROUTE WITH WORKS	0.0188
'DIVERSION'	0.0009

PIA: Personal Injury Accidents

ROAD USER COSTS PER DAY	\$19,861
CONGESTED HOURS PER DAY*	3

*Delays Exceeding User-Specified Maximum

**USH 12/14: GAMMON RD TO VERONA RD (DANE COUNTY)
NIGHTTIME CLOSURE
NO DIVERSION ROUTE (MAX QUEUE METHOD)**

OCTOBER

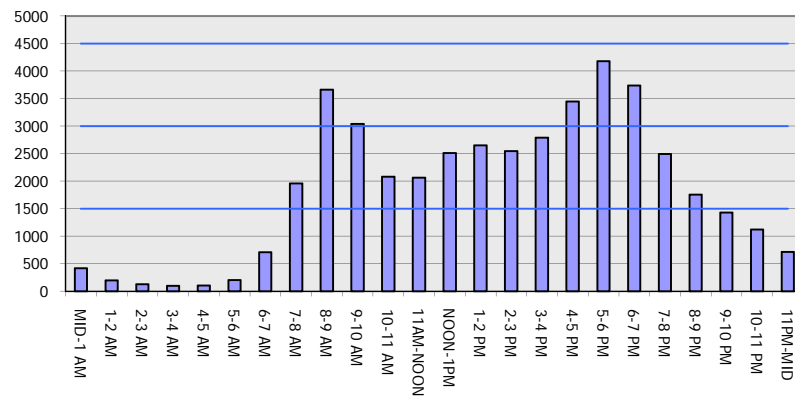
Analyzed for 2009
Construction Season

GRAPHICAL REPRESENTATION OF TRAFFIC MODEL INPUT AND OUTPUT

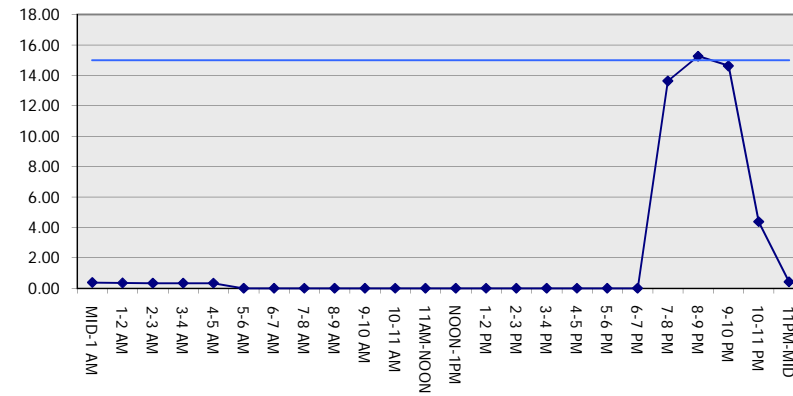
MON-THUR

EASTBOUND DIRECTION

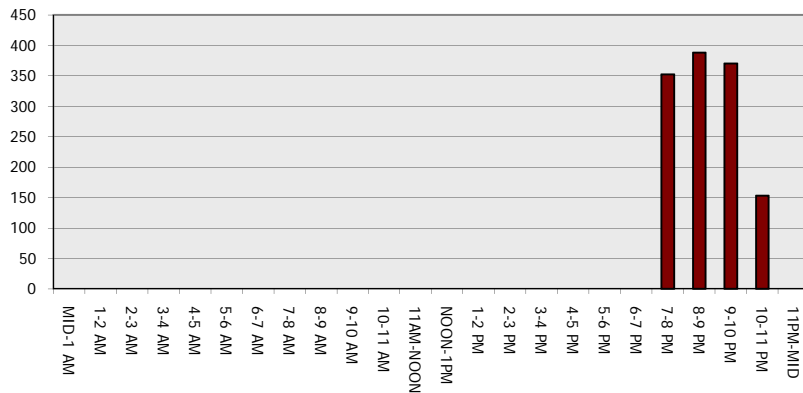
Main Route - Traffic Demand (Vehicles Per Hour)



Main Route Average Delay Per Vehicle (Minutes)



Main Route - Average Queue Length (Vehicles)



Main Route - Average Speed (MPH)

