

USH 12/14: GAMMON RD TO VERONA RD (DANE COUNTY) NIGHTTIME CLOSURE NO DIVERSION ROUTE (MAX QUEUE METHOD)	OCTOBER
	Analyzed for 2009 Construction Season

SUMMARY OF TRAFFIC MODEL OUTPUT

FRIDAY WESTBOUND DIRECTION

TIME OF DAY	FLOWS AND CAPACITY IN VEH/HR						AVERAGE SPEEDS IN MPH			
	MAIN ROUTE		SITE CAPA CITY	FLOW		AV.DEL PER VEH (MINS)	AVERAGE QUEUE (VEH)	MAIN ROUTE		SITE
	DEMAND FLOW	PCT HEAVY		MAIN ROUTE	'DIVER TED'			WITHOUT WORK ZONE	WITH WORK ZONE	
MID-1 AM	397	0.0	1500	397	0	0.38	0	60.2	53.0	43.9
1-2 AM	230	0.0	1500	230	0	0.36	0	60.2	53.4	44.6
2-3 AM	160	0.0	1500	160	0	0.35	0	60.2	53.5	44.8
3-4 AM	105	0.0	1500	105	0	0.34	0	60.2	53.7	45.1
4-5 AM	128	0.0	1500	128	0	0.34	0	60.2	53.6	45.0
5-6 AM	216	0.0	OFF	216	0	0.00	0	60.2	60.2	60.2
6-7 AM	661	0.0	OFF	661	0	0.00	0	60.2	60.2	60.2
7-8 AM	2111	0.0	OFF	2111	0	0.00	0	60.2	60.2	60.2
8-9 AM	3991	0.0	OFF	3991	0	0.00	0	45.6	45.6	45.6
9-10 AM	3276	0.0	OFF	3276	0	0.00	0	52.9	52.9	52.9
10-11 AM	2409	0.0	OFF	2409	0	0.00	0	60.2	60.2	60.2
11AM-NOON	2473	0.0	OFF	2473	0	0.00	0	60.2	60.2	60.2
NOON-1PM	2795	0.0	OFF	2795	0	0.00	0	57.9	57.9	57.9
1-2 PM	3037	0.0	OFF	3037	0	0.00	0	55.4	55.4	55.4
2-3 PM	3000	0.0	OFF	3000	0	0.00	0	55.8	55.8	55.8
3-4 PM	3243	0.0	OFF	3243	0	0.00	0	53.3	53.3	53.3
4-5 PM	3576	0.0	OFF	3576	0	0.00	0	49.9	49.9	49.9
5-6 PM	4057	0.0	OFF	4057	0	0.00	0	45.0	45.0	45.0
6-7 PM	3890	0.0	OFF	3890	0	0.00	0	46.6	46.6	46.6
7-8 PM	2729	0.0	1499	1618	1111	14.99+	392	58.6	10.3	36.2
8-9 PM	1945	0.0	1499	1799	146	12.95+	340	60.2	11.3	30.8
9-10 PM	1503	0.0	1500	1463	40	15.94+	405	60.2	9.9	30.8
10-11 PM	1328	0.0	1499	1328	0	12.26	310	60.2	11.6	30.8
11PM-MID	952	0.0	1500	952	0	1.54	49	60.2	38.8	39.9

"OFF" INDICATES NO ROAD WORK (ALL LANES OPEN TO TRAFFIC)

+ INDICATES QUEUEING EXCEEDS USER-SPECIFIED MAXIMUM LIMIT

----- SITE BREAKDOWN DELAYS -----	
BREAKDOWN DURATION (MINS)	0
RANGE OF QUEUE DELAY - MIN (VEH-H) MAX	0.0
AV BREAKDOWNS PER DAY	0.00
AV QUEUE DELAY/DAY (VEH-H)	0.0
AV TOTAL DELAY/DAY (VEH-H)	0.0

----- SITE ACCIDENT DELAYS -----	
BREAKDOWN DURATION (MINS)	0
RANGE OF QUEUE DELAY - MIN (VEH-H) MAX	0
AV BREAKDOWNS PER DAY	0
AV QUEUE DELAY/DAY (VEH-H)	0
AV TOTAL DELAY/DAY (VEH-H)	0

AVERAGE ACCIDENT NUMBERS (PIA/DAY)	
MAIN ROUTE WITHOUT WORKS	0.0215
MAIN ROUTE WITH WORKS	0.0204
'DIVERSION'	0.0013
PIA: Personal Injury Accidents	
IMPACTS ON ROAD USERS	
ROAD USER COSTS PER DAY	\$25,593
CONGESTED HOURS PER DAY*	3

*Delays Exceeding User-Specified Maximum

**USH 12/14: GAMMON RD TO VERONA RD (DANE COUNTY)
NIGHTTIME CLOSURE
NO DIVERSION ROUTE (MAX QUEUE METHOD)**

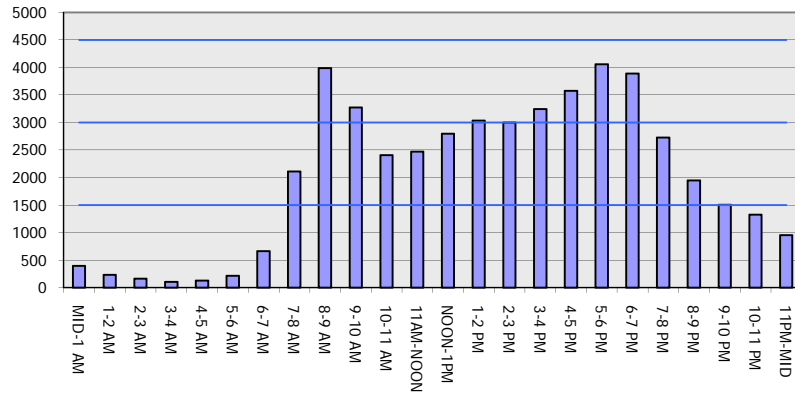
OCTOBER

Analyzed for 2009
Construction Season

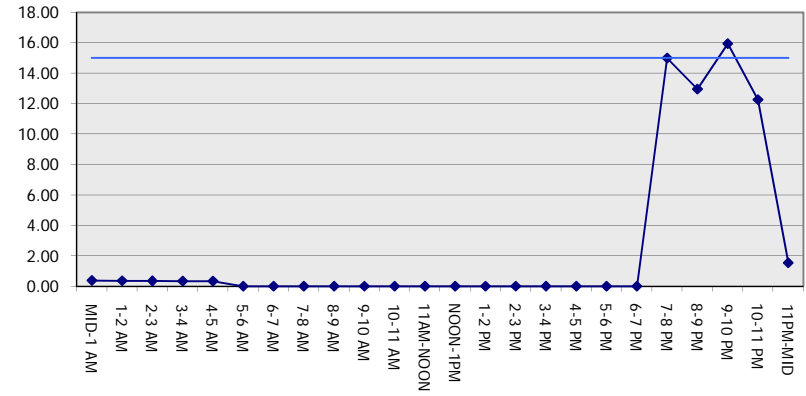
GRAPHICAL REPRESENTATION OF TRAFFIC MODEL INPUT AND OUTPUT

FRIDAY WESTBOUND DIRECTION

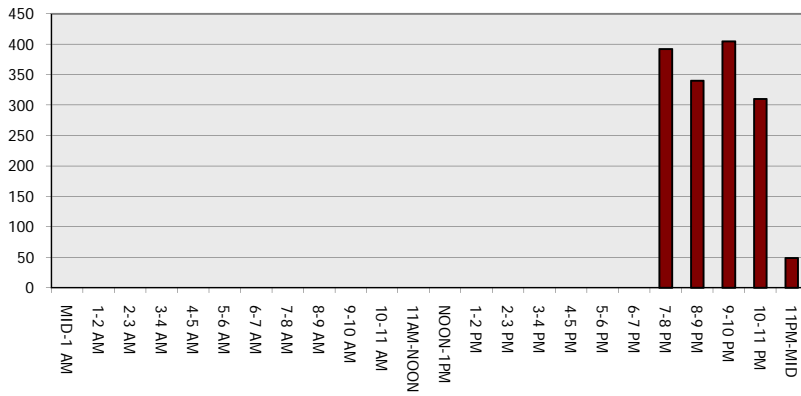
Main Route - Traffic Demand (Vehicles Per Hour)



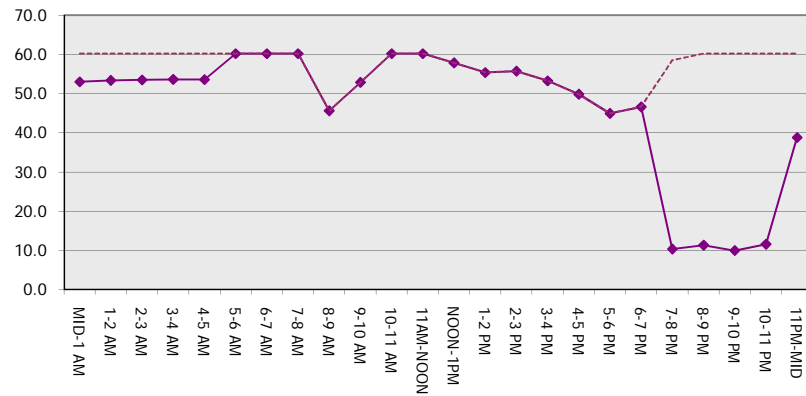
Main Route Average Delay Per Vehicle (Minutes)



Main Route - Average Queue Length (Vehicles)



Main Route - Average Speed (MPH)



USH 12/14: GAMMON RD TO VERONA RD (DANE COUNTY) NIGHTTIME CLOSURE NO DIVERSION ROUTE (MAX QUEUE METHOD)	OCTOBER
	Analyzed for 2009 Construction Season

SUMMARY OF TRAFFIC MODEL OUTPUT

FRIDAY EASTBOUND DIRECTION

TIME OF DAY	FLOWS AND CAPACITY IN VEH/HR						AVERAGE SPEEDS IN MPH			
	MAIN ROUTE		SITE CAPA CITY	FLOW		AV.DEL PER VEH (MINS)	AVERAGE QUEUE (VEH)	MAIN ROUTE		SITE
	DEMAND FLOW	PCT HEAVY		MAIN ROUTE	'DIVER TED'			WITHOUT WORK ZONE	WITH WORK ZONE	
MID-1 AM	561	0.0	1500	561	0	0.40	0	60.2	52.7	43.3
1-2 AM	280	0.0	1500	280	0	0.36	0	60.2	53.3	44.3
2-3 AM	165	0.0	1500	165	0	0.35	0	60.2	53.5	44.8
3-4 AM	113	0.0	1500	113	0	0.34	0	60.2	53.7	45.0
4-5 AM	122	0.0	1500	122	0	0.34	0	60.2	53.7	45.0
5-6 AM	197	0.0	OFF	197	0	0.00	0	60.2	60.2	60.2
6-7 AM	658	0.0	OFF	658	0	0.00	0	60.2	60.2	60.2
7-8 AM	1832	0.0	OFF	1832	0	0.00	0	60.2	60.2	60.2
8-9 AM	3333	0.0	OFF	3333	0	0.00	0	52.4	52.4	52.4
9-10 AM	2932	0.0	OFF	2932	0	0.00	0	56.4	56.4	56.4
10-11 AM	2222	0.0	OFF	2222	0	0.00	0	60.2	60.2	60.2
11AM-NOON	2346	0.0	OFF	2346	0	0.00	0	60.2	60.2	60.2
NOON-1PM	2790	0.0	OFF	2790	0	0.00	0	57.9	57.9	57.9
1-2 PM	3059	0.0	OFF	3059	0	0.00	0	55.1	55.1	55.1
2-3 PM	3043	0.0	OFF	3043	0	0.00	0	55.3	55.3	55.3
3-4 PM	3179	0.0	OFF	3179	0	0.00	0	53.9	53.9	53.9
4-5 PM	3646	0.0	OFF	3646	0	0.00	0	49.1	49.1	49.1
5-6 PM	4056	0.0	OFF	4056	0	0.00	0	45.0	45.0	45.0
6-7 PM	3493	0.0	OFF	3493	0	0.00	0	50.7	50.7	50.7
7-8 PM	2610	0.0	1499	1750	860	13.90+	361	59.7	10.8	35.4
8-9 PM	1908	0.0	1499	1640	268	15.09+	385	60.2	10.2	30.8
9-10 PM	1483	0.0	1499	1483	0	15.64+	397	60.2	10.1	30.8
10-11 PM	1366	0.0	1500	1366	0	12.64	319	60.2	11.2	30.8
11PM-MID	1029	0.0	1499	1029	0	2.05	74	60.2	34.7	38.4

"OFF" INDICATES NO ROAD WORK (ALL LANES OPEN TO TRAFFIC)

+ INDICATES QUEUEING EXCEEDS USER-SPECIFIED MAXIMUM LIMIT

----- SITE BREAKDOWN DELAYS -----	
BREAKDOWN DURATION (MINS)	0
RANGE OF QUEUE DELAY - MIN (VEH-H) MAX	0.0
AV BREAKDOWNS PER DAY	0.00
AV QUEUE DELAY/DAY (VEH-H)	0.0
AV TOTAL DELAY/DAY (VEH-H)	0.0

----- SITE ACCIDENT DELAYS -----	
BREAKDOWN DURATION (MINS)	0
RANGE OF QUEUE DELAY - MIN (VEH-H) MAX	0
AV BREAKDOWNS PER DAY	0
AV QUEUE DELAY/DAY (VEH-H)	0
AV TOTAL DELAY/DAY (VEH-H)	0

AVERAGE ACCIDENT NUMBERS (PIA/DAY)	
MAIN ROUTE WITHOUT WORKS	0.0207
MAIN ROUTE WITH WORKS	0.0196
'DIVERSION'	0.0012

PIA: Personal Injury Accidents

ECONOMIC IMPACT ON ROAD USERS	
ROAD USER COSTS PER DAY	\$25,577
CONGESTED HOURS PER DAY*	3

*Delays Exceeding User-Specified Maximum

**USH 12/14: GAMMON RD TO VERONA RD (DANE COUNTY)
NIGHTTIME CLOSURE
NO DIVERSION ROUTE (MAX QUEUE METHOD)**

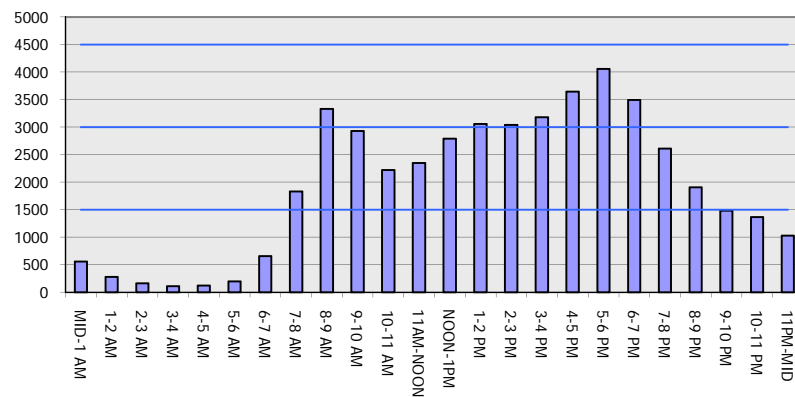
OCTOBER

Analyzed for 2009
Construction Season

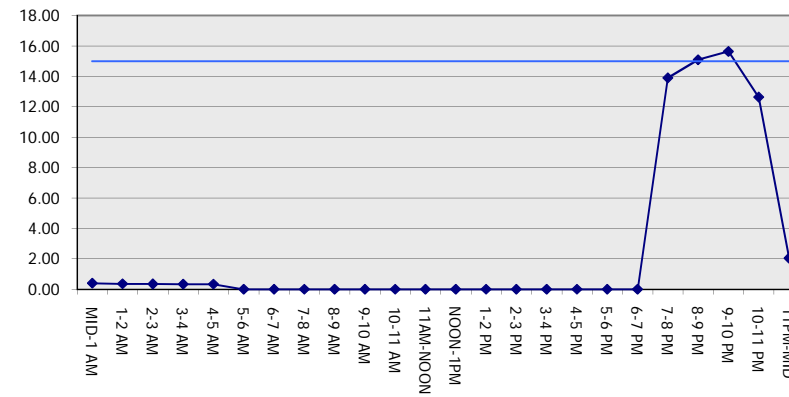
GRAPHICAL REPRESENTATION OF TRAFFIC MODEL INPUT AND OUTPUT

FRIDAY EASTBOUND DIRECTION

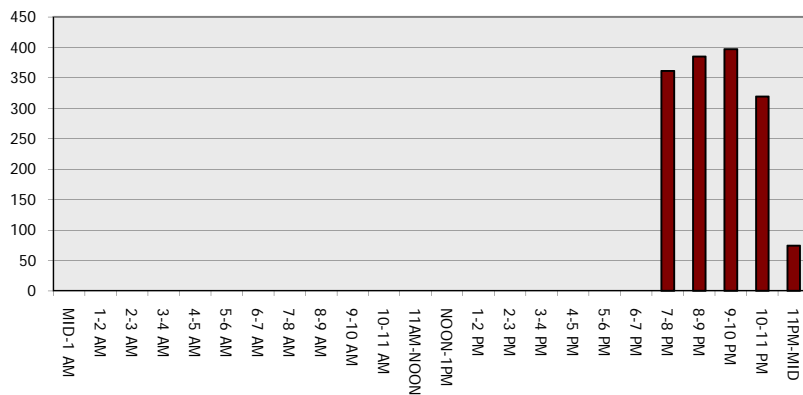
Main Route - Traffic Demand (Vehicles Per Hour)



Main Route Average Delay Per Vehicle (Minutes)



Main Route - Average Queue Length (Vehicles)



Main Route - Average Speed (MPH)

