

<b>USH 12/14: GAMMON RD TO VERONA RD (DANE COUNTY)</b> <b>NIGHTTIME CLOSURE</b> <b>NO DIVERSION ROUTE (MAX QUEUE METHOD)</b>	<b>AUGUST</b>
	Analyzed for 2009 Construction Season

**SUMMARY OF TRAFFIC MODEL OUTPUT**

SUNDAY WESTBOUND DIRECTION

TIME OF DAY	FLOWS AND CAPACITY IN VEH/HR						AVERAGE SPEEDS IN MPH				
	MAIN ROUTE		SITE CAPA CITY	FLOW		AV.DEL PER VEH (MINS)	AVERAGE QUEUE (VEH)	MAIN ROUTE		SITE	
	DEMAND FLOW	PCT HEAVY		MAIN ROUTE	'DIVER TED'			WITHOUT WORK ZONE	WITH WORK ZONE		
MID-1 AM	603	0.0	1500	603	0	0.40	0	60.2	52.7	43.1	
1-2 AM	393	0.0	1500	393	0	0.38	0	60.2	53.1	43.9	
2-3 AM	250	0.0	1500	250	0	0.36	0	60.2	53.3	44.5	
3-4 AM	201	0.0	1500	201	0	0.35	0	60.2	53.5	44.6	
4-5 AM	102	0.0	1500	102	0	0.34	0	60.2	53.7	45.1	
5-6 AM	85	0.0	1500	85	0	0.34	0	60.2	53.7	45.1	
6-7 AM	110	0.0	1500	110	0	0.34	0	60.2	53.7	45.0	
7-8 AM	279	0.0	1500	279	0	0.36	0	60.2	53.3	44.3	
8-9 AM	490	0.0	1500	490	0	0.39	0	60.2	52.8	43.5	
9-10 AM	859	0.0	OFF	859	0	0.00	0	60.2	60.2	60.2	
10-11 AM	1134	0.0	OFF	1134	0	0.00	0	60.2	60.2	60.2	
11AM-NOON	1581	0.0	OFF	1581	0	0.00	0	60.2	60.2	60.2	
NOON-1PM	2026	0.0	OFF	2026	0	0.00	0	60.2	60.2	60.2	
1-2 PM	2192	0.0	OFF	2192	0	0.00	0	60.2	60.2	60.2	
2-3 PM	2206	0.0	OFF	2206	0	0.00	0	60.2	60.2	60.2	
3-4 PM	2147	0.0	OFF	2147	0	0.00	0	60.2	60.2	60.2	
4-5 PM	2205	0.0	OFF	2205	0	0.00	0	60.2	60.2	60.2	
5-6 PM	2085	0.0	OFF	2085	0	0.00	0	60.2	60.2	60.2	
6-7 PM	1748	0.0	OFF	1748	0	0.00	0	60.2	60.2	60.2	
7-8 PM	1472	0.0	1499	1472	0	1.15	6	60.2	42.6	31.7	
8-9 PM	1217	0.0	1500	1217	0	0.60	0	60.2	49.6	37.9	
9-10 PM	1081	0.0	1500	1081	0	0.46	0	60.2	51.7	41.4	
10-11 PM	888	0.0	1500	888	0	0.44	0	60.2	52.0	42.0	
11PM-MID	537	0.0	1500	537	0	0.39	0	60.2	52.8	43.3	

"OFF" INDICATES NO ROAD WORK (ALL LANES OPEN TO TRAFFIC)

*----- SITE BREAKDOWN DELAYS -----*	
BREAKDOWN DURATION (MINS)	0
RANGE OF QUEUE DELAY - MIN (VEH-H) MAX	0.0
AV BREAKDOWNS PER DAY	0.00
AV QUEUE DELAY/DAY (VEH-H)	0.0
AV TOTAL DELAY/DAY (VEH-H)	0.0

*----- SITE ACCIDENT DELAYS -----*	
BREAKDOWN DURATION (MINS)	0
RANGE OF QUEUE DELAY - MIN (VEH-H) MAX	0
AV BREAKDOWNS PER DAY	0
AV QUEUE DELAY/DAY (VEH-H)	0
AV TOTAL DELAY/DAY (VEH-H)	0

AVERAGE ACCIDENT NUMBERS (PIA/DAY)	
MAIN ROUTE WITHOUT WORKS	0.0115
MAIN ROUTE WITH WORKS	0.0110
'DIVERSION'	0.0000
PIA: Personal Injury Accidents	
IMPACTS ON ROAD USERS	
ROAD USER COSTS PER DAY	\$1,240
CONGESTED HOURS PER DAY*	0

\*Delays Exceeding User-Specified Maximum

**USH 12/14: GAMMON RD TO VERONA RD (DANE COUNTY)  
NIGHTTIME CLOSURE  
NO DIVERSION ROUTE (MAX QUEUE METHOD)**

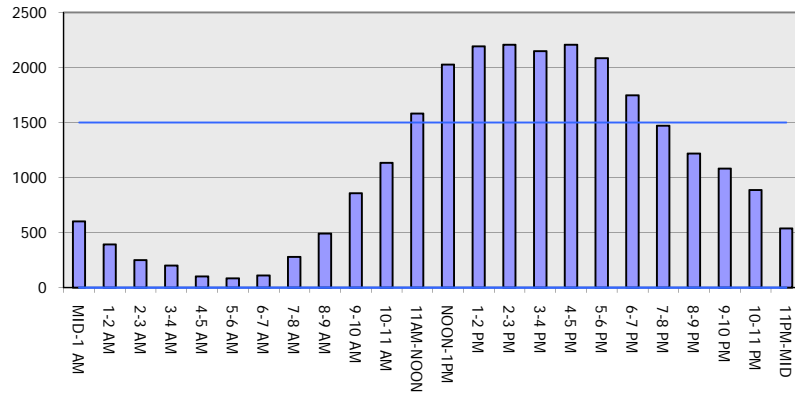
**AUGUST**

Analyzed for 2009  
Construction Season

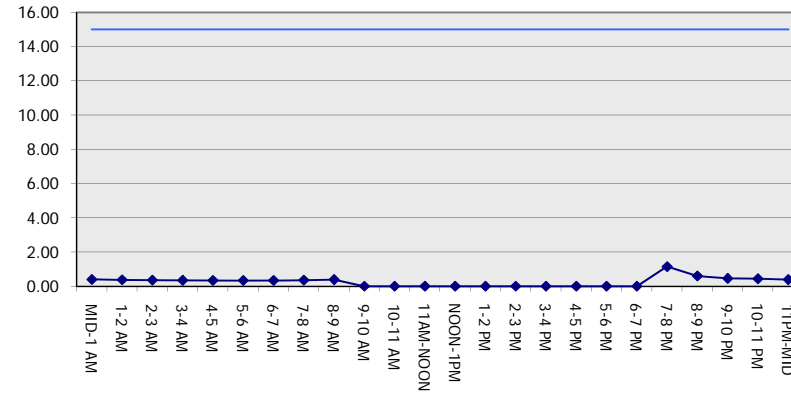
**GRAPHICAL REPRESENTATION OF TRAFFIC MODEL INPUT AND OUTPUT**

**SUNDAY WESTBOUND DIRECTION**

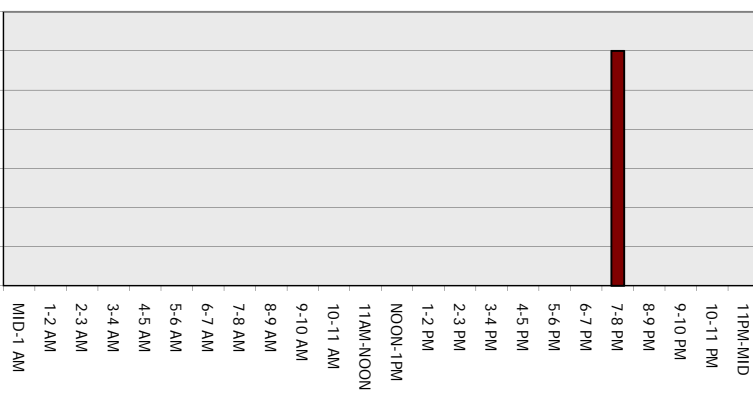
**Main Route - Traffic Demand (Vehicles Per Hour)**



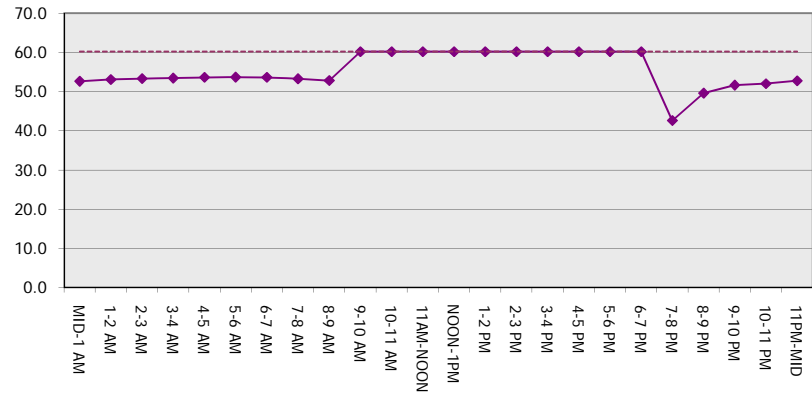
**Main Route Average Delay Per Vehicle (Minutes)**



**Main Route - Average Queue Length (Vehicles)**



**Main Route - Average Speed (MPH)**



<b>USH 12/14: GAMMON RD TO VERONA RD (DANE COUNTY)</b> <b>NIGHTTIME CLOSURE</b> <b>NO DIVERSION ROUTE (MAX QUEUE METHOD)</b>	<b>AUGUST</b>
	Analyzed for 2009 Construction Season

**SUMMARY OF TRAFFIC MODEL OUTPUT**

SUNDAY EASTBOUND DIRECTION

TIME OF DAY	FLOWS AND CAPACITY IN VEH/HR						AVERAGE SPEEDS IN MPH			
	MAIN ROUTE		SITE CAPA CITY	FLOW		AV.DEL PER VEH (MINS)	AVERAGE QUEUE (VEH)	MAIN ROUTE		SITE
	DEMAND FLOW	PCT HEAVY		MAIN ROUTE	'DIVER TED'			WITHOUT WORK ZONE	WITH WORK ZONE	
MID-1 AM	779	0.0	1500	779	0	0.42	0	60.2	52.3	42.5
1-2 AM	444	0.0	1500	444	0	0.38	0	60.2	53.0	43.7
2-3 AM	234	0.0	1500	234	0	0.36	0	60.2	53.4	44.5
3-4 AM	231	0.0	1500	231	0	0.36	0	60.2	53.4	44.6
4-5 AM	115	0.0	1500	115	0	0.34	0	60.2	53.7	45.0
5-6 AM	95	0.0	1500	95	0	0.34	0	60.2	53.7	45.1
6-7 AM	133	0.0	1500	133	0	0.34	0	60.2	53.6	45.0
7-8 AM	312	0.0	1500	312	0	0.37	0	60.2	53.2	44.2
8-9 AM	465	0.0	1500	465	0	0.39	0	60.2	52.9	43.7
9-10 AM	797	0.0	OFF	797	0	0.00	0	60.2	60.2	60.2
10-11 AM	1239	0.0	OFF	1239	0	0.00	0	60.2	60.2	60.2
11AM-NOON	1726	0.0	OFF	1726	0	0.00	0	60.2	60.2	60.2
NOON-1PM	2059	0.0	OFF	2059	0	0.00	0	60.2	60.2	60.2
1-2 PM	2261	0.0	OFF	2261	0	0.00	0	60.2	60.2	60.2
2-3 PM	2303	0.0	OFF	2303	0	0.00	0	60.2	60.2	60.2
3-4 PM	2371	0.0	OFF	2371	0	0.00	0	60.2	60.2	60.2
4-5 PM	2494	0.0	OFF	2494	0	0.00	0	60.2	60.2	60.2
5-6 PM	2421	0.0	OFF	2421	0	0.00	0	60.2	60.2	60.2
6-7 PM	2272	0.0	OFF	2272	0	0.00	0	60.2	60.2	60.2
7-8 PM	1962	0.0	1499	1962	0	8.87+	250	60.2	14.9	30.8
8-9 PM	1662	0.0	1499	1451	211	16.05+	408	60.2	9.9	30.8
9-10 PM	1261	0.0	1499	1261	0	12.17+	314	60.2	11.7	31.1
10-11 PM	1000	0.0	1500	1000	0	1.27	36	60.2	41.4	40.2
11PM-MID	619	0.0	1500	619	0	0.40	0	60.2	52.6	43.0

"OFF" INDICATES NO ROAD WORK (ALL LANES OPEN TO TRAFFIC)

+ INDICATES QUEUEING EXCEEDS USER-SPECIFIED MAXIMUM LIMIT

BREAKDOWN DURATION (MINS)	0
RANGE OF QUEUE DELAY - MIN (VEH-H) MAX	0.0
AV BREAKDOWNS PER DAY	0.00
AV QUEUE DELAY/DAY (VEH-H)	0.0
AV TOTAL DELAY/DAY (VEH-H)	0.0

BREAKDOWN DURATION (MINS)	0
RANGE OF QUEUE DELAY - MIN (VEH-H) MAX	0
AV BREAKDOWNS PER DAY	0
AV QUEUE DELAY/DAY (VEH-H)	0
AV TOTAL DELAY/DAY (VEH-H)	0

MAIN ROUTE WITHOUT WORKS	0.0130
MAIN ROUTE WITH WORKS	0.0124
'DIVERSION'	0.0002

PIA: Personal Injury Accidents

ROAD USER COSTS PER DAY	\$17,222
CONGESTED HOURS PER DAY*	3

\*Delays Exceeding User-Specified Maximum

**USH 12/14: GAMMON RD TO VERONA RD (DANE COUNTY)  
NIGHTTIME CLOSURE  
NO DIVERSION ROUTE (MAX QUEUE METHOD)**

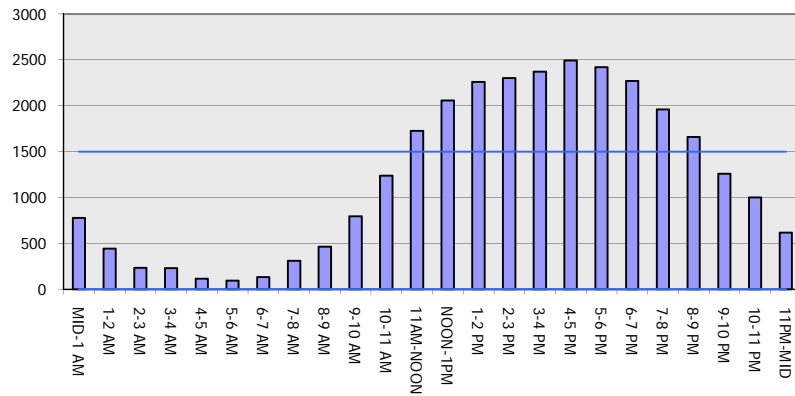
**AUGUST**

Analyzed for 2009  
Construction Season

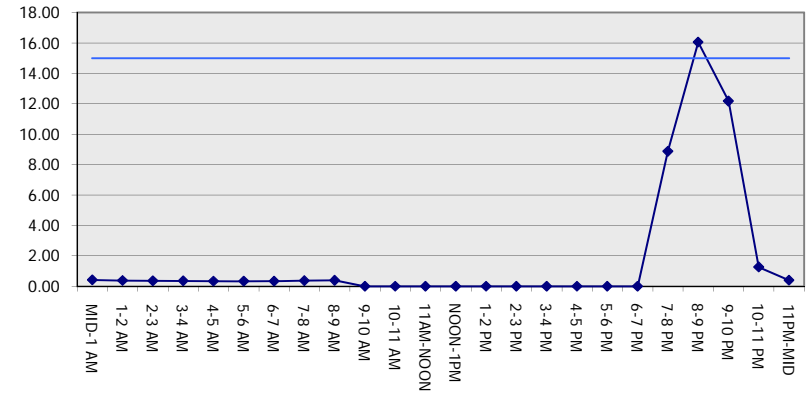
**GRAPHICAL REPRESENTATION OF TRAFFIC MODEL INPUT AND OUTPUT**

**SUNDAY EASTBOUND DIRECTION**

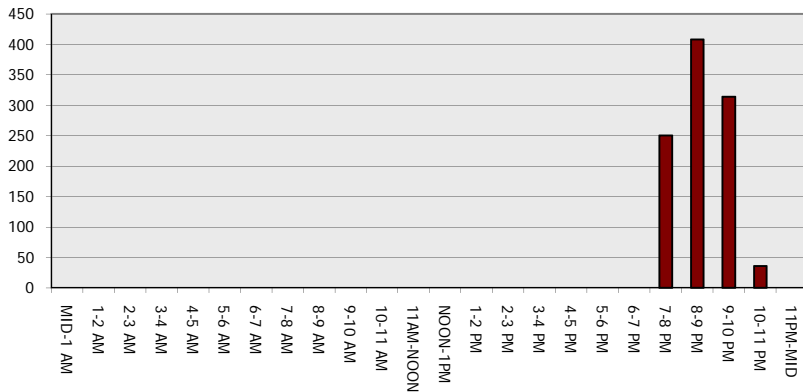
**Main Route - Traffic Demand (Vehicles Per Hour)**



**Main Route Average Delay Per Vehicle (Minutes)**



**Main Route - Average Queue Length (Vehicles)**



**Main Route - Average Speed (MPH)**

