

USH 12/14: GAMMON RD TO VERONA RD (DANE COUNTY) NIGHTTIME CLOSURE NO DIVERSION ROUTE (MAX QUEUE METHOD)	AUGUST
	Analyzed for 2009 Construction Season

SUMMARY OF TRAFFIC MODEL OUTPUT

SATURDAY WESTBOUND DIRECTION

TIME OF DAY	FLOWS AND CAPACITY IN VEH/HR						AVERAGE SPEEDS IN MPH				
	MAIN ROUTE		SITE CAPA CITY	FLOW		AV.DEL PER VEH (MINS)	AVERAGE QUEUE (VEH)	MAIN ROUTE		SITE	
	DEMAND FLOW	PCT HEAVY		MAIN ROUTE	'DIVER TED'			WITHOUT WORK ZONE	WITH WORK ZONE		
MID-1 AM	618	0.0	1500	618	0	0.40	0	60.2	52.6	43.0	
1-2 AM	373	0.0	1500	373	0	0.37	0	60.2	53.1	44.0	
2-3 AM	248	0.0	1500	248	0	0.36	0	60.2	53.3	44.5	
3-4 AM	209	0.0	1500	209	0	0.35	0	60.2	53.5	44.6	
4-5 AM	146	0.0	1500	146	0	0.35	0	60.2	53.6	44.9	
5-6 AM	133	0.0	1500	133	0	0.34	0	60.2	53.6	45.0	
6-7 AM	242	0.0	1500	242	0	0.36	0	60.2	53.4	44.5	
7-8 AM	555	0.0	1500	555	0	0.40	0	60.2	52.7	43.3	
8-9 AM	928	0.0	OFF	928	0	0.00	0	60.2	60.2	60.2	
9-10 AM	1467	0.0	OFF	1467	0	0.00	0	60.2	60.2	60.2	
10-11 AM	1777	0.0	OFF	1777	0	0.00	0	60.2	60.2	60.2	
11AM-NOON	2219	0.0	OFF	2219	0	0.00	0	60.2	60.2	60.2	
NOON-1PM	2593	0.0	OFF	2593	0	0.00	0	59.9	59.9	59.9	
1-2 PM	2599	0.0	OFF	2599	0	0.00	0	59.9	59.9	59.9	
2-3 PM	2616	0.0	OFF	2616	0	0.00	0	59.7	59.7	59.7	
3-4 PM	2453	0.0	OFF	2453	0	0.00	0	60.2	60.2	60.2	
4-5 PM	2511	0.0	OFF	2511	0	0.00	0	60.2	60.2	60.2	
5-6 PM	2490	0.0	OFF	2490	0	0.00	0	60.2	60.2	60.2	
6-7 PM	2160	0.0	1499	1870	290	10.96+	298	60.2	12.9	30.8	
7-8 PM	1878	0.0	1500	1514	364	16.18+	412	60.2	9.9	30.8	
8-9 PM	1426	0.0	1500	1426	0	14.47+	366	60.2	10.4	30.8	
9-10 PM	1259	0.0	1499	1259	0	7.72	201	60.2	16.0	31.9	
10-11 PM	1064	0.0	1500	1064	0	0.63	6	60.2	49.1	41.1	
11PM-MID	846	0.0	1500	846	0	0.43	0	60.2	52.2	42.2	

"OFF" INDICATES NO ROAD WORK (ALL LANES OPEN TO TRAFFIC)

+ INDICATES QUEUEING EXCEEDS USER-SPECIFIED MAXIMUM LIMIT

----- SITE BREAKDOWN DELAYS -----	
BREAKDOWN DURATION (MINS)	0
RANGE OF QUEUE DELAY - MIN (VEH-H) MAX	0.0
AV BREAKDOWNS PER DAY	0.00
AV QUEUE DELAY/DAY (VEH-H)	0.0
AV TOTAL DELAY/DAY (VEH-H)	0.0

----- SITE ACCIDENT DELAYS -----	
BREAKDOWN DURATION (MINS)	0
RANGE OF QUEUE DELAY - MIN (VEH-H) MAX	0
AV BREAKDOWNS PER DAY	0
AV QUEUE DELAY/DAY (VEH-H)	0
AV TOTAL DELAY/DAY (VEH-H)	0

AVERAGE ACCIDENT NUMBERS (PIA/DAY)	
MAIN ROUTE WITHOUT WORKS	0.0146
MAIN ROUTE WITH WORKS	0.0136
'DIVERSION'	0.0007
<small>PIA: Personal Injury Accidents</small>	
IMPACTS ON ROAD USERS	
ROAD USER COSTS PER DAY	\$23,452
CONGESTED HOURS PER DAY*	3

*Delays Exceeding User-Specified Maximum

**USH 12/14: GAMMON RD TO VERONA RD (DANE COUNTY)
NIGHTTIME CLOSURE
NO DIVERSION ROUTE (MAX QUEUE METHOD)**

AUGUST

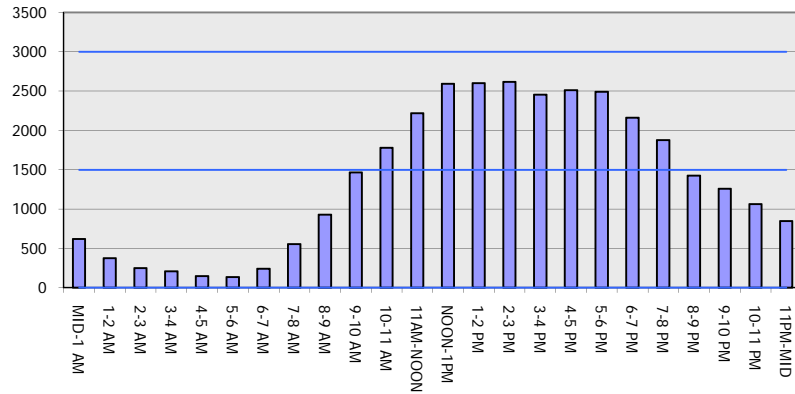
Analyzed for 2009
Construction Season

GRAPHICAL REPRESENTATION OF TRAFFIC MODEL INPUT AND OUTPUT

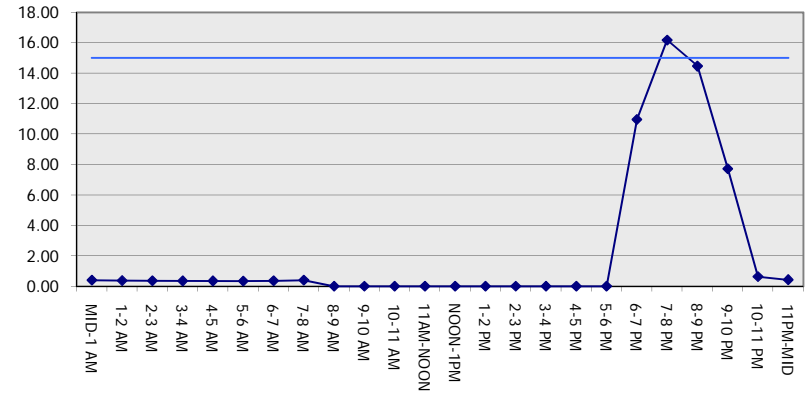
SATURDAY

WESTBOUND DIRECTION

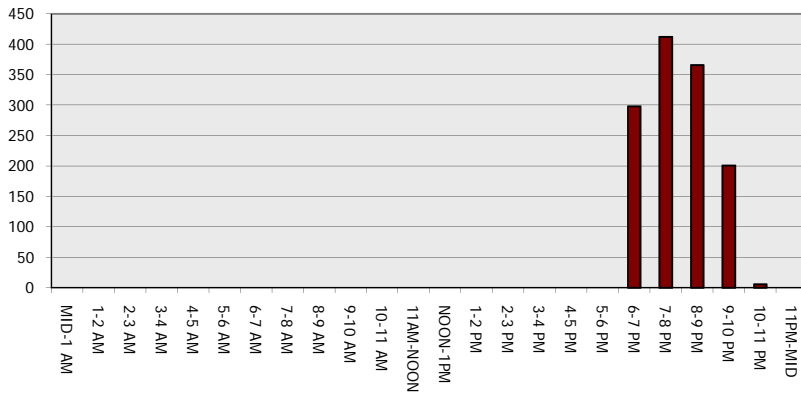
Main Route - Traffic Demand (Vehicles Per Hour)



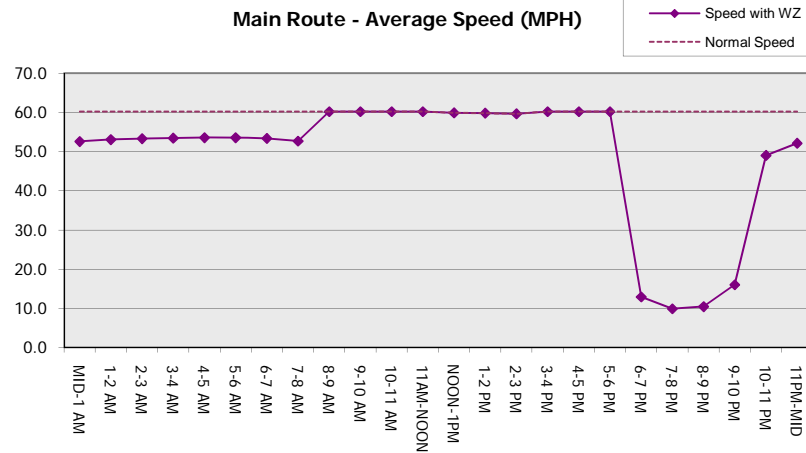
Main Route Average Delay Per Vehicle (Minutes)



Main Route - Average Queue Length (Vehicles)



Main Route - Average Speed (MPH)



USH 12/14: GAMMON RD TO VERONA RD (DANE COUNTY) NIGHTTIME CLOSURE NO DIVERSION ROUTE (MAX QUEUE METHOD)	AUGUST
	Analyzed for 2009 Construction Season

SUMMARY OF TRAFFIC MODEL OUTPUT

SATURDAY EASTBOUND DIRECTION

TIME OF DAY	FLOWS AND CAPACITY IN VEH/HR						AVERAGE SPEEDS IN MPH			
	MAIN ROUTE		SITE CAPA CITY	FLOW		AV.DEL PER VEH (MINS)	AVERAGE QUEUE (VEH)	MAIN ROUTE		SITE
	DEMAND FLOW	PCT HEAVY		MAIN ROUTE	'DIVER TED'			WITHOUT WORK ZONE	WITH WORK ZONE	
MID-1 AM	822	0.0	1500	822	0	0.43	0	60.2	52.2	42.3
1-2 AM	446	0.0	1500	446	0	0.38	0	60.2	53.0	43.7
2-3 AM	250	0.0	1500	250	0	0.36	0	60.2	53.3	44.5
3-4 AM	203	0.0	1500	203	0	0.35	0	60.2	53.5	44.6
4-5 AM	130	0.0	1500	130	0	0.34	0	60.2	53.6	45.0
5-6 AM	133	0.0	1500	133	0	0.34	0	60.2	53.6	45.0
6-7 AM	220	0.0	1500	220	0	0.36	0	60.2	53.4	44.6
7-8 AM	532	0.0	1500	532	0	0.39	0	60.2	52.8	43.4
8-9 AM	934	0.0	OFF	934	0	0.00	0	60.2	60.2	60.2
9-10 AM	1257	0.0	OFF	1257	0	0.00	0	60.2	60.2	60.2
10-11 AM	1724	0.0	OFF	1724	0	0.00	0	60.2	60.2	60.2
11AM-NOON	2005	0.0	OFF	2005	0	0.00	0	60.2	60.2	60.2
NOON-1PM	2268	0.0	OFF	2268	0	0.00	0	60.2	60.2	60.2
1-2 PM	2408	0.0	OFF	2408	0	0.00	0	60.2	60.2	60.2
2-3 PM	2433	0.0	OFF	2433	0	0.00	0	60.2	60.2	60.2
3-4 PM	2399	0.0	OFF	2399	0	0.00	0	60.2	60.2	60.2
4-5 PM	2318	0.0	OFF	2318	0	0.00	0	60.2	60.2	60.2
5-6 PM	2255	0.0	OFF	2255	0	0.00	0	60.2	60.2	60.2
6-7 PM	2081	0.0	1499	1899	182	9.97+	277	60.2	13.8	30.8
7-8 PM	1841	0.0	1499	1501	339	16.23+	413	60.2	9.9	30.8
8-9 PM	1516	0.0	1500	1493	23	15.95+	405	60.2	9.9	30.8
9-10 PM	1463	0.0	1500	1463	0	15.07+	382	60.2	10.2	30.8
10-11 PM	1290	0.0	1499	1290	0	10.52	268	60.2	12.8	31.1
11PM-MID	911	0.0	1500	911	0	0.88	20	60.2	45.8	41.9

"OFF" INDICATES NO ROAD WORK (ALL LANES OPEN TO TRAFFIC)

+ INDICATES QUEUEING EXCEEDS USER-SPECIFIED MAXIMUM LIMIT

BREAKDOWN DURATION (MINS)	0
RANGE OF QUEUE DELAY - MIN (VEH-H) MAX	0.0
AV BREAKDOWNS PER DAY	0.00
AV QUEUE DELAY/DAY (VEH-H)	0.0
AV TOTAL DELAY/DAY (VEH-H)	0.0

BREAKDOWN DURATION (MINS)	0
RANGE OF QUEUE DELAY - MIN (VEH-H) MAX	0
AV BREAKDOWNS PER DAY	0
AV QUEUE DELAY/DAY (VEH-H)	0
AV TOTAL DELAY/DAY (VEH-H)	0

MAIN ROUTE WITHOUT WORKS	0.0142
MAIN ROUTE WITH WORKS	0.0132
'DIVERSION'	0.0006

PIA: Personal Injury Accidents

ROAD USER COSTS PER DAY	\$30,478
CONGESTED HOURS PER DAY*	4

*Delays Exceeding User-Specified Maximum

**USH 12/14: GAMMON RD TO VERONA RD (DANE COUNTY)
NIGHTTIME CLOSURE
NO DIVERSION ROUTE (MAX QUEUE METHOD)**

AUGUST
Analyzed for 2009
Construction Season

GRAPHICAL REPRESENTATION OF TRAFFIC MODEL INPUT AND OUTPUT
SATURDAY EASTBOUND DIRECTION

