

USH 12/14: GAMMON RD TO VERONA RD (DANE COUNTY) NIGHTTIME CLOSURE NO DIVERSION ROUTE (MAX QUEUE METHOD)	AUGUST
	Analyzed for 2009 Construction Season

SUMMARY OF TRAFFIC MODEL OUTPUT

MON-THUR WESTBOUND DIRECTION

TIME OF DAY	FLOWS AND CAPACITY IN VEH/HR						AVERAGE SPEEDS IN MPH			
	MAIN ROUTE		SITE CAPA CITY	FLOW		AV.DEL PER VEH (MINS)	AVERAGE QUEUE (VEH)	MAIN ROUTE		SITE
	DEMAND FLOW	PCT HEAVY		MAIN ROUTE	'DIVER TED'			WITHOUT WORK ZONE	WITH WORK ZONE	
MID-1 AM	350	0.0	1500	350	0	0.37	0	60.2	53.2	44.1
1-2 AM	199	0.0	1500	199	0	0.35	0	60.2	53.5	44.7
2-3 AM	129	0.0	1500	129	0	0.34	0	60.2	53.6	45.0
3-4 AM	104	0.0	1500	104	0	0.34	0	60.2	53.7	45.1
4-5 AM	89	0.0	1500	89	0	0.34	0	60.2	53.7	45.1
5-6 AM	216	0.0	OFF	216	0	0.00	0	60.2	60.2	60.2
6-7 AM	695	0.0	OFF	695	0	0.00	0	60.2	60.2	60.2
7-8 AM	2229	0.0	OFF	2229	0	0.00	0	60.2	60.2	60.2
8-9 AM	4085	0.0	OFF	4085	0	0.00	0	44.6	44.6	44.6
9-10 AM	3191	0.0	OFF	3191	0	0.00	0	53.8	53.8	53.8
10-11 AM	2313	0.0	OFF	2313	0	0.00	0	60.2	60.2	60.2
11AM-NOON	2281	0.0	OFF	2281	0	0.00	0	60.2	60.2	60.2
NOON-1PM	2578	0.0	OFF	2578	0	0.00	0	60.1	60.1	60.1
1-2 PM	2838	0.0	OFF	2838	0	0.00	0	57.4	57.4	57.4
2-3 PM	2775	0.0	OFF	2775	0	0.00	0	58.1	58.1	58.1
3-4 PM	2905	0.0	OFF	2905	0	0.00	0	56.8	56.8	56.8
4-5 PM	3221	0.0	OFF	3221	0	0.00	0	53.5	53.5	53.5
5-6 PM	3933	0.0	OFF	3933	0	0.00	0	46.2	46.2	46.2
6-7 PM	3927	0.0	OFF	3927	0	0.00	0	46.3	46.3	46.3
7-8 PM	2634	0.0	1499	1677	957	14.39+	376	59.5	10.6	35.8
8-9 PM	1823	0.0	1499	1734	89	13.64+	353	60.2	10.9	30.8
9-10 PM	1482	0.0	1500	1444	38	15.63+	397	60.2	10.1	30.8
10-11 PM	1070	0.0	1499	1070	0	4.56	170	60.2	23.0	36.2
11PM-MID	655	0.0	1500	655	0	0.41	0	60.2	52.5	42.9

"OFF" INDICATES NO ROAD WORK (ALL LANES OPEN TO TRAFFIC)

+ INDICATES QUEUEING EXCEEDS USER-SPECIFIED MAXIMUM LIMIT

----- SITE BREAKDOWN DELAYS -----	
BREAKDOWN DURATION (MINS)	0
RANGE OF QUEUE DELAY - MIN (VEH-H) MAX	0.0
AV BREAKDOWNS PER DAY	0.00
AV QUEUE DELAY/DAY (VEH-H)	0.0
AV TOTAL DELAY/DAY (VEH-H)	0.0

----- SITE ACCIDENT DELAYS -----	
BREAKDOWN DURATION (MINS)	0
RANGE OF QUEUE DELAY - MIN (VEH-H) MAX	0
AV BREAKDOWNS PER DAY	0
AV QUEUE DELAY/DAY (VEH-H)	0
AV TOTAL DELAY/DAY (VEH-H)	0

AVERAGE ACCIDENT NUMBERS (PIA/DAY)	
MAIN ROUTE WITHOUT WORKS	0.0204
MAIN ROUTE WITH WORKS	0.0194
'DIVERSION'	0.0011
PIA: Personal Injury Accidents	
IMPACTS ON ROAD USERS	
ROAD USER COSTS PER DAY	\$20,946
CONGESTED HOURS PER DAY*	3

*Delays Exceeding User-Specified Maximum

**USH 12/14: GAMMON RD TO VERONA RD (DANE COUNTY)
NIGHTTIME CLOSURE
NO DIVERSION ROUTE (MAX QUEUE METHOD)**

AUGUST

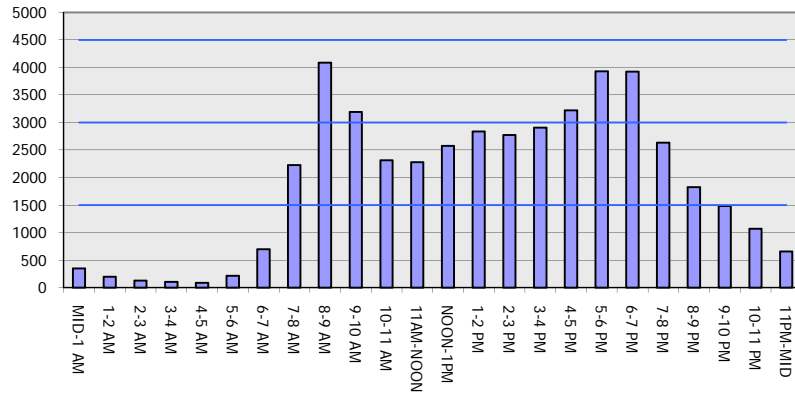
Analyzed for 2009
Construction Season

GRAPHICAL REPRESENTATION OF TRAFFIC MODEL INPUT AND OUTPUT

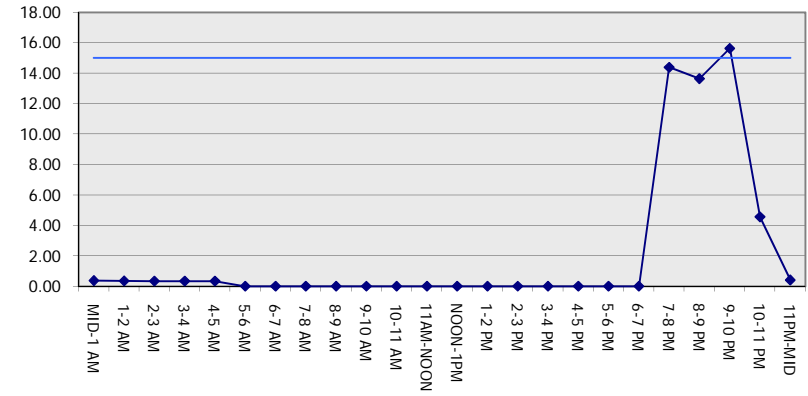
MON-THUR

WESTBOUND DIRECTION

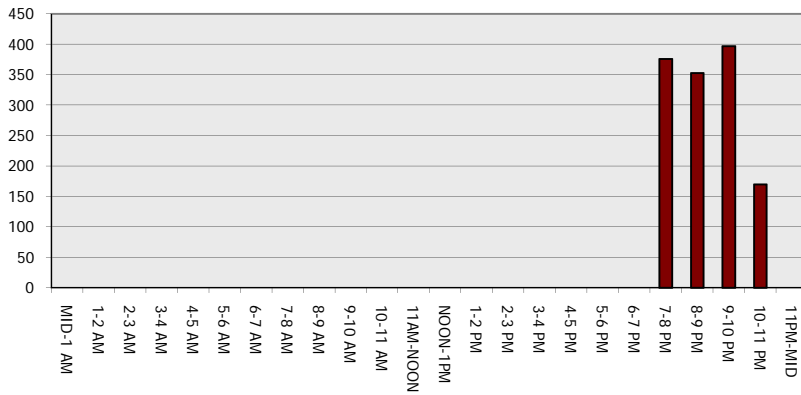
Main Route - Traffic Demand (Vehicles Per Hour)



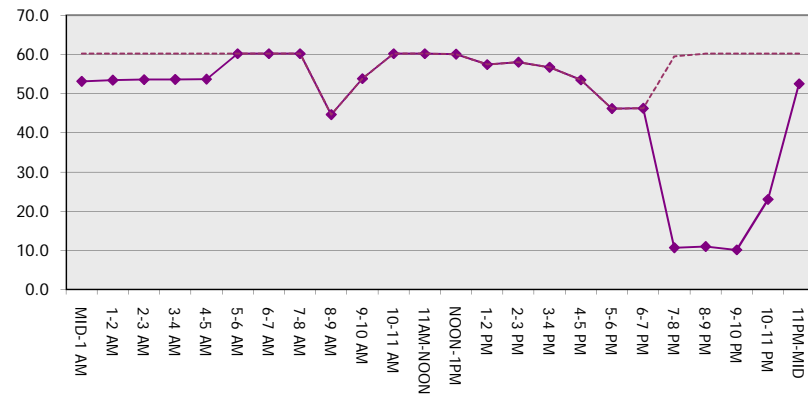
Main Route Average Delay Per Vehicle (Minutes)



Main Route - Average Queue Length (Vehicles)



Main Route - Average Speed (MPH)



USH 12/14: GAMMON RD TO VERONA RD (DANE COUNTY) NIGHTTIME CLOSURE NO DIVERSION ROUTE (MAX QUEUE METHOD)	AUGUST
	Analyzed for 2009 Construction Season

SUMMARY OF TRAFFIC MODEL OUTPUT

MON-THUR EASTBOUND DIRECTION

TIME OF DAY	FLOWS AND CAPACITY IN VEH/HR							AVERAGE SPEEDS IN MPH			
	MAIN ROUTE		SITE CAPA CITY	FLOW		AV.DEL PER VEH (MINS)	AVERAGE QUEUE (VEH)	MAIN ROUTE		SITE	
	DEMAND FLOW	PCT HEAVY		MAIN ROUTE	'DIVER TED'			WITHOUT WORK ZONE	WITH WORK ZONE		
MID-1 AM	512	0.0	1500	512	0	0.39	0	60.2	52.8	43.5	
1-2 AM	246	0.0	1500	246	0	0.36	0	60.2	53.3	44.5	
2-3 AM	158	0.0	1500	158	0	0.35	0	60.2	53.5	44.8	
3-4 AM	97	0.0	1500	97	0	0.34	0	60.2	53.7	45.1	
4-5 AM	106	0.0	1500	106	0	0.34	0	60.2	53.7	45.1	
5-6 AM	197	0.0	OFF	197	0	0.00	0	60.2	60.2	60.2	
6-7 AM	707	0.0	OFF	707	0	0.00	0	60.2	60.2	60.2	
7-8 AM	1907	0.0	OFF	1907	0	0.00	0	60.2	60.2	60.2	
8-9 AM	3366	0.0	OFF	3366	0	0.00	0	52.0	52.0	52.0	
9-10 AM	2882	0.0	OFF	2882	0	0.00	0	57.0	57.0	57.0	
10-11 AM	2141	0.0	OFF	2141	0	0.00	0	60.2	60.2	60.2	
11AM-NOON	2187	0.0	OFF	2187	0	0.00	0	60.2	60.2	60.2	
NOON-1PM	2619	0.0	OFF	2619	0	0.00	0	59.7	59.7	59.7	
1-2 PM	2823	0.0	OFF	2823	0	0.00	0	57.6	57.6	57.6	
2-3 PM	2718	0.0	OFF	2718	0	0.00	0	58.7	58.7	58.7	
3-4 PM	2885	0.0	OFF	2885	0	0.00	0	56.9	56.9	56.9	
4-5 PM	3422	0.0	OFF	3422	0	0.00	0	51.4	51.4	51.4	
5-6 PM	4062	0.0	OFF	4062	0	0.00	0	44.9	44.9	44.9	
6-7 PM	3626	0.0	OFF	3626	0	0.00	0	49.4	49.4	49.4	
7-8 PM	2441	0.0	1499	1840	602	13.31+	342	60.2	11.0	33.2	
8-9 PM	1840	0.0	1499	1550	290	16.02+	407	60.2	9.9	30.8	
9-10 PM	1665	0.0	1500	1521	144	16.12+	410	60.2	9.9	30.8	
10-11 PM	1273	0.0	1499	1273	0	12.58+	324	60.2	11.4	31.1	
11PM-MID	812	0.0	1500	812	0	1.00	28	60.2	44.4	42.2	

"OFF" INDICATES NO ROAD WORK (ALL LANES OPEN TO TRAFFIC)

+ INDICATES QUEUEING EXCEEDS USER-SPECIFIED MAXIMUM LIMIT

----- SITE BREAKDOWN DELAYS -----	
BREAKDOWN DURATION (MINS)	0
RANGE OF QUEUE DELAY - MIN (VEH-H) MAX	0.0
AV BREAKDOWNS PER DAY	0.00
AV QUEUE DELAY/DAY (VEH-H)	0.0
AV TOTAL DELAY/DAY (VEH-H)	0.0

----- SITE ACCIDENT DELAYS -----	
BREAKDOWN DURATION (MINS)	0
RANGE OF QUEUE DELAY - MIN (VEH-H) MAX	0
AV BREAKDOWNS PER DAY	0
AV QUEUE DELAY/DAY (VEH-H)	0
AV TOTAL DELAY/DAY (VEH-H)	0

AVERAGE ACCIDENT NUMBERS (PIA/DAY)	
MAIN ROUTE WITHOUT WORKS	0.0199
MAIN ROUTE WITH WORKS	0.0189
'DIVERSION'	0.0011

PIA: Personal Injury Accidents

ECONOMIC IMPACT ON ROAD USERS	
ROAD USER COSTS PER DAY	\$24,306
CONGESTED HOURS PER DAY*	4

*Delays Exceeding User-Specified Maximum

**USH 12/14: GAMMON RD TO VERONA RD (DANE COUNTY)
NIGHTTIME CLOSURE
NO DIVERSION ROUTE (MAX QUEUE METHOD)**

AUGUST
Analyzed for 2009
Construction Season

**GRAPHICAL REPRESENTATION OF TRAFFIC MODEL INPUT AND OUTPUT
MON-THUR EASTBOUND DIRECTION**

