

<b>USH 12/14: OLD SAUK RD TO GAMMON RD (DANE COUNTY)</b> <b>NIGHTTIME CLOSURE</b> <b>NO DIVERSION ROUTE (MAX QUEUE METHOD)</b>	<b>OCTOBER</b>
	Analyzed for 2009 Construction Season

**SUMMARY OF TRAFFIC MODEL OUTPUT**

MON-THUR      WESTBOUND DIRECTION

TIME OF DAY	FLOWS AND CAPACITY IN VEH/HR						AVERAGE SPEEDS IN MPH			
	MAIN ROUTE		SITE CAPA CITY	FLOW		AV.DEL PER VEH (MINS)	AVERAGE QUEUE (VEH)	MAIN ROUTE		SITE
	DEMAND FLOW	PCT HEAVY		MAIN ROUTE	'DIVER TED'			WITHOUT WORK ZONE	WITH WORK ZONE	
MID-1 AM	224	0.0	1500	224	0	0.36	0	60.2	51.8	44.6
1-2 AM	132	0.0	1500	132	0	0.34	0	60.2	52.0	45.0
2-3 AM	81	0.0	1500	81	0	0.34	0	60.2	52.2	45.1
3-4 AM	63	0.0	1500	63	0	0.34	0	60.2	52.2	45.3
4-5 AM	77	0.0	1500	77	0	0.34	0	60.2	52.2	45.2
5-6 AM	168	0.0	OFF	168	0	0.00	0	60.2	60.2	60.2
6-7 AM	516	0.0	OFF	516	0	0.00	0	60.2	60.2	60.2
7-8 AM	1718	0.0	OFF	1718	0	0.00	0	60.2	60.2	60.2
8-9 AM	3144	0.0	OFF	3144	0	0.00	0	54.3	54.3	54.3
9-10 AM	2605	0.0	OFF	2605	0	0.00	0	59.8	59.8	59.8
10-11 AM	1731	0.0	OFF	1731	0	0.00	0	60.2	60.2	60.2
11AM-NOON	1632	0.0	OFF	1632	0	0.00	0	60.2	60.2	60.2
NOON-1PM	1836	0.0	OFF	1836	0	0.00	0	60.2	60.2	60.2
1-2 PM	2038	0.0	OFF	2038	0	0.00	0	60.2	60.2	60.2
2-3 PM	1962	0.0	OFF	1962	0	0.00	0	60.2	60.2	60.2
3-4 PM	2096	0.0	OFF	2096	0	0.00	0	60.2	60.2	60.2
4-5 PM	2400	0.0	OFF	2400	0	0.00	0	60.2	60.2	60.2
5-6 PM	2979	0.0	OFF	2979	0	0.00	0	56.0	56.0	56.0
6-7 PM	2940	0.0	OFF	2940	0	0.00	0	56.4	56.4	56.4
7-8 PM	1934	0.0	1499	1934	0	10.00+	269	60.2	12.0	30.8
8-9 PM	1262	0.0	1499	1262	0	13.40+	344	60.2	10.0	31.2
9-10 PM	980	0.0	1500	980	0	1.28	42	60.2	38.1	40.5
10-11 PM	762	0.0	1500	762	0	0.42	0	60.2	50.5	42.5
11PM-MID	461	0.0	1500	461	0	0.39	0	60.2	51.2	43.7

"OFF" INDICATES NO ROAD WORK (ALL LANES OPEN TO TRAFFIC)

+ INDICATES QUEUEING EXCEEDS USER-SPECIFIED MAXIMUM LIMIT

*----- SITE BREAKDOWN DELAYS -----*	
BREAKDOWN DURATION (MINS)	0
RANGE OF QUEUE DELAY - MIN (VEH-H) MAX	0.0
AV BREAKDOWNS PER DAY	0.00
AV QUEUE DELAY/DAY (VEH-H)	0.0
AV TOTAL DELAY/DAY (VEH-H)	0.0

*----- SITE ACCIDENT DELAYS -----*	
BREAKDOWN DURATION (MINS)	0
RANGE OF QUEUE DELAY - MIN (VEH-H) MAX	0
AV BREAKDOWNS PER DAY	0
AV QUEUE DELAY/DAY (VEH-H)	0
AV TOTAL DELAY/DAY (VEH-H)	0

AVERAGE ACCIDENT NUMBERS (PIA/DAY)	
MAIN ROUTE WITHOUT WORKS	0.0118
MAIN ROUTE WITH WORKS	0.0114
'DIVERSION'	0.0000
<small>PIA: Personal Injury Accidents</small>	
IMPACTS ON ROAD USERS	
ROAD USER COSTS PER DAY	\$9,297
CONGESTED HOURS PER DAY*	2

\*Delays Exceeding User-Specified Maximum

**USH 12/14: OLD SAUK RD TO GAMMON RD (DANE COUNTY)  
NIGHTTIME CLOSURE  
NO DIVERSION ROUTE (MAX QUEUE METHOD)**

**OCTOBER**

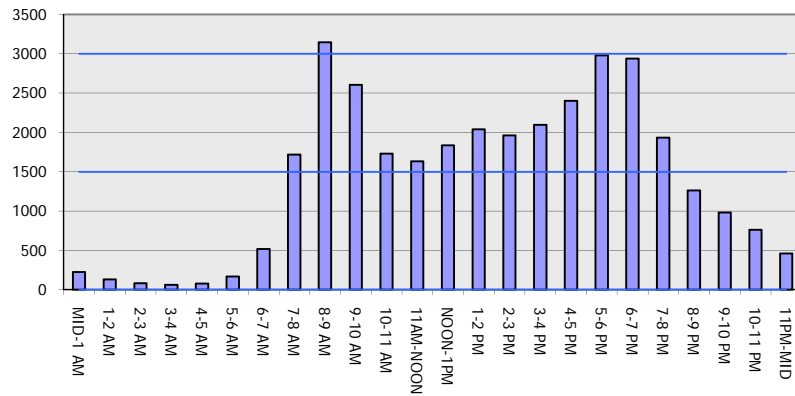
Analyzed for 2009  
Construction Season

**GRAPHICAL REPRESENTATION OF TRAFFIC MODEL INPUT AND OUTPUT**

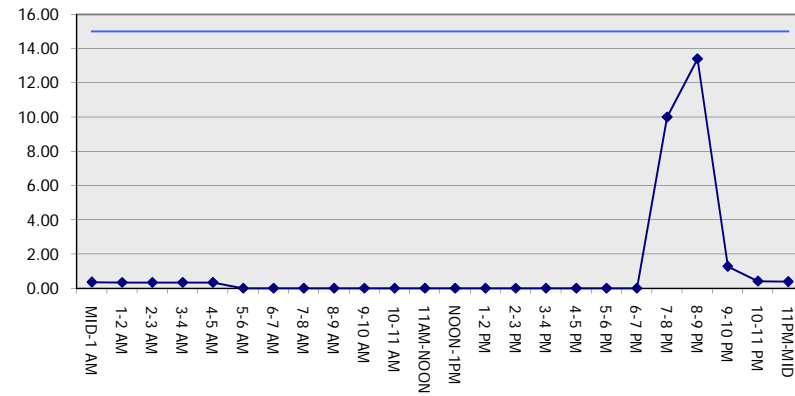
**MON-THUR**

**WESTBOUND DIRECTION**

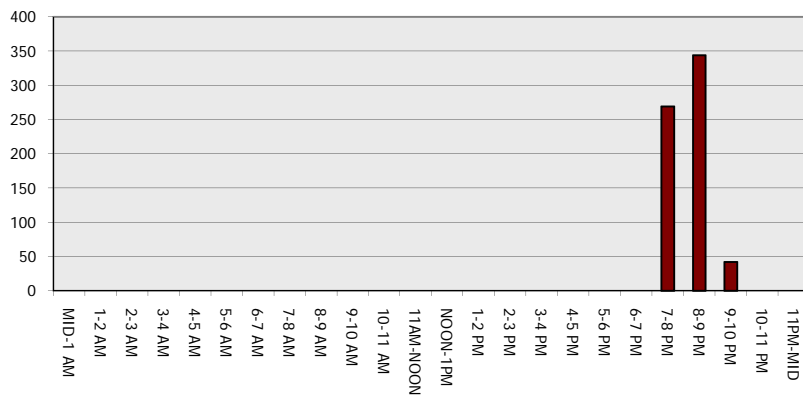
**Main Route - Traffic Demand (Vehicles Per Hour)**



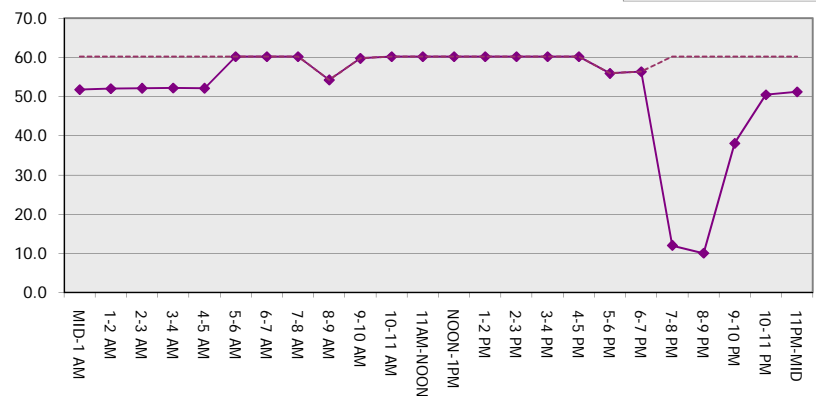
**Main Route Average Delay Per Vehicle (Minutes)**



**Main Route - Average Queue Length (Vehicles)**



**Main Route - Average Speed (MPH)**



<b>USH 12/14: OLD SAUK RD TO GAMMON RD (DANE COUNTY)</b> <b>NIGHTTIME CLOSURE</b> <b>NO DIVERSION ROUTE (MAX QUEUE METHOD)</b>	<b>OCTOBER</b>
	Analyzed for 2009 Construction Season

**SUMMARY OF TRAFFIC MODEL OUTPUT**

MON-THUR                      EASTBOUND DIRECTION

TIME OF DAY	FLOWS AND CAPACITY IN VEH/HR						AVERAGE SPEEDS IN MPH			
	MAIN ROUTE		SITE CAPA CITY	FLOW		AV.DEL PER VEH (MINS)	AVERAGE QUEUE (VEH)	MAIN ROUTE		SITE
	DEMAND FLOW	PCT HEAVY		MAIN ROUTE	'DIVER TED'			WITHOUT WORK ZONE	WITH WORK ZONE	
MID-1 AM	319	0.0	1500	319	0	0.37	0	60.2	51.5	44.2
1-2 AM	149	0.0	1500	149	0	0.35	0	60.2	52.0	44.9
2-3 AM	99	0.0	1500	99	0	0.34	0	60.2	52.1	45.1
3-4 AM	73	0.0	1500	73	0	0.34	0	60.2	52.2	45.2
4-5 AM	78	0.0	1500	78	0	0.34	0	60.2	52.2	45.2
5-6 AM	152	0.0	OFF	152	0	0.00	0	60.2	60.2	60.2
6-7 AM	536	0.0	OFF	536	0	0.00	0	60.2	60.2	60.2
7-8 AM	1486	0.0	OFF	1486	0	0.00	0	60.2	60.2	60.2
8-9 AM	2775	0.0	OFF	2775	0	0.00	0	58.1	58.1	58.1
9-10 AM	2305	0.0	OFF	2305	0	0.00	0	60.2	60.2	60.2
10-11 AM	1579	0.0	OFF	1579	0	0.00	0	60.2	60.2	60.2
11AM-NOON	1566	0.0	OFF	1566	0	0.00	0	60.2	60.2	60.2
NOON-1PM	1907	0.0	OFF	1907	0	0.00	0	60.2	60.2	60.2
1-2 PM	2011	0.0	OFF	2011	0	0.00	0	60.2	60.2	60.2
2-3 PM	1934	0.0	OFF	1934	0	0.00	0	60.2	60.2	60.2
3-4 PM	2118	0.0	OFF	2118	0	0.00	0	60.2	60.2	60.2
4-5 PM	2614	0.0	OFF	2614	0	0.00	0	59.7	59.7	59.7
5-6 PM	3170	0.0	OFF	3170	0	0.00	0	54.0	54.0	54.0
6-7 PM	2837	0.0	OFF	2837	0	0.00	0	57.4	57.4	57.4
7-8 PM	1895	0.0	1499	1895	0	9.12	244	60.2	12.7	30.8
8-9 PM	1333	0.0	1499	1333	0	13.27+	336	60.2	10.0	30.8
9-10 PM	1085	0.0	1499	1085	0	1.93	72	60.2	32.0	38.1
10-11 PM	855	0.0	1500	855	0	0.43	0	60.2	50.3	42.2
11PM-MID	542	0.0	1500	542	0	0.40	0	60.2	51.0	43.3

"OFF" INDICATES NO ROAD WORK (ALL LANES OPEN TO TRAFFIC)

+ INDICATES QUEUEING EXCEEDS USER-SPECIFIED MAXIMUM LIMIT

BREAKDOWN DURATION (MINS)	0
RANGE OF QUEUE DELAY - MIN (VEH-H) MAX	0.0
AV BREAKDOWNS PER DAY	0.00
AV QUEUE DELAY/DAY (VEH-H)	0.0
AV TOTAL DELAY/DAY (VEH-H)	0.0

BREAKDOWN DURATION (MINS)	0
RANGE OF QUEUE DELAY - MIN (VEH-H) MAX	0
AV BREAKDOWNS PER DAY	0
AV QUEUE DELAY/DAY (VEH-H)	0
AV TOTAL DELAY/DAY (VEH-H)	0

MAIN ROUTE WITHOUT WORKS	0.0117
MAIN ROUTE WITH WORKS	0.0113
'DIVERSION'	0.0000

PIA: Personal Injury Accidents

ROAD USER COSTS PER DAY	\$9,224
CONGESTED HOURS PER DAY*	1

\*Delays Exceeding User-Specified Maximum

**USH 12/14: OLD SAUK RD TO GAMMON RD (DANE COUNTY)  
NIGHTTIME CLOSURE  
NO DIVERSION ROUTE (MAX QUEUE METHOD)**

**OCTOBER**

Analyzed for 2009  
Construction Season

**GRAPHICAL REPRESENTATION OF TRAFFIC MODEL INPUT AND OUTPUT**

**MON-THUR EASTBOUND DIRECTION**

