

USH 12/14: OLD SAUK RD TO GAMMON RD (DANE COUNTY) NIGHTTIME CLOSURE NO DIVERSION ROUTE (MAX QUEUE METHOD)	AUGUST
	Analyzed for 2009 Construction Season

SUMMARY OF TRAFFIC MODEL OUTPUT

SATURDAY WESTBOUND DIRECTION

TIME OF DAY	FLOWS AND CAPACITY IN VEH/HR						AVERAGE SPEEDS IN MPH				
	MAIN ROUTE		SITE CAPA CITY	FLOW		AV.DEL PER VEH (MINS)	AVERAGE QUEUE (VEH)	MAIN ROUTE		SITE	
	DEMAND FLOW	PCT HEAVY		MAIN ROUTE	'DIVER TED'			WITHOUT WORK ZONE	WITH WORK ZONE		
MID-1 AM	469	0.0	1500	469	0	0.39	0	60.2	51.2	43.6	
1-2 AM	282	0.0	1500	282	0	0.36	0	60.2	51.7	44.3	
2-3 AM	188	0.0	1500	188	0	0.35	0	60.2	51.9	44.7	
3-4 AM	160	0.0	1500	160	0	0.35	0	60.2	52.0	44.8	
4-5 AM	111	0.0	1500	111	0	0.34	0	60.2	52.1	45.0	
5-6 AM	101	0.0	1500	101	0	0.34	0	60.2	52.1	45.1	
6-7 AM	183	0.0	1500	183	0	0.35	0	60.2	51.9	44.8	
7-8 AM	421	0.0	1500	421	0	0.38	0	60.2	51.3	43.8	
8-9 AM	704	0.0	OFF	704	0	0.00	0	60.2	60.2	60.2	
9-10 AM	1114	0.0	OFF	1114	0	0.00	0	60.2	60.2	60.2	
10-11 AM	1348	0.0	OFF	1348	0	0.00	0	60.2	60.2	60.2	
11AM-NOON	1684	0.0	OFF	1684	0	0.00	0	60.2	60.2	60.2	
NOON-1PM	1968	0.0	OFF	1968	0	0.00	0	60.2	60.2	60.2	
1-2 PM	1972	0.0	OFF	1972	0	0.00	0	60.2	60.2	60.2	
2-3 PM	1986	0.0	OFF	1986	0	0.00	0	60.2	60.2	60.2	
3-4 PM	1861	0.0	OFF	1861	0	0.00	0	60.2	60.2	60.2	
4-5 PM	1905	0.0	OFF	1905	0	0.00	0	60.2	60.2	60.2	
5-6 PM	1890	0.0	OFF	1890	0	0.00	0	60.2	60.2	60.2	
6-7 PM	1639	0.0	1499	1639	0	3.80	83	60.2	22.0	30.8	
7-8 PM	1426	0.0	1499	1426	0	5.27	119	60.2	17.7	31.0	
8-9 PM	1083	0.0	1500	1083	0	0.63	5	60.2	46.8	40.7	
9-10 PM	955	0.0	1500	955	0	0.45	0	60.2	50.1	41.9	
10-11 PM	807	0.0	1500	807	0	0.43	0	60.2	50.4	42.4	
11PM-MID	641	0.0	1500	641	0	0.41	0	60.2	50.8	43.0	

"OFF" INDICATES NO ROAD WORK (ALL LANES OPEN TO TRAFFIC)

----- SITE BREAKDOWN DELAYS -----	
BREAKDOWN DURATION (MINS)	0
RANGE OF QUEUE DELAY - MIN (VEH-H) MAX	0.0
AV BREAKDOWNS PER DAY	0.00
AV QUEUE DELAY/DAY (VEH-H)	0.0
AV TOTAL DELAY/DAY (VEH-H)	0.0

----- SITE ACCIDENT DELAYS -----	
BREAKDOWN DURATION (MINS)	0
RANGE OF QUEUE DELAY - MIN (VEH-H) MAX	0
AV BREAKDOWNS PER DAY	0
AV QUEUE DELAY/DAY (VEH-H)	0
AV TOTAL DELAY/DAY (VEH-H)	0

AVERAGE ACCIDENT NUMBERS (PIA/DAY)	
MAIN ROUTE WITHOUT WORKS	0.0087
MAIN ROUTE WITH WORKS	0.0082
'DIVERSION'	0.0000
PIA: Personal Injury Accidents	
IMPACTS ON ROAD USERS	
ROAD USER COSTS PER DAY	\$4,454
CONGESTED HOURS PER DAY*	0

*Delays Exceeding User-Specified Maximum

USH 12/14: OLD SAUK RD TO GAMMON RD (DANE COUNTY)
NIGHTTIME CLOSURE
NO DIVERSION ROUTE (MAX QUEUE METHOD)

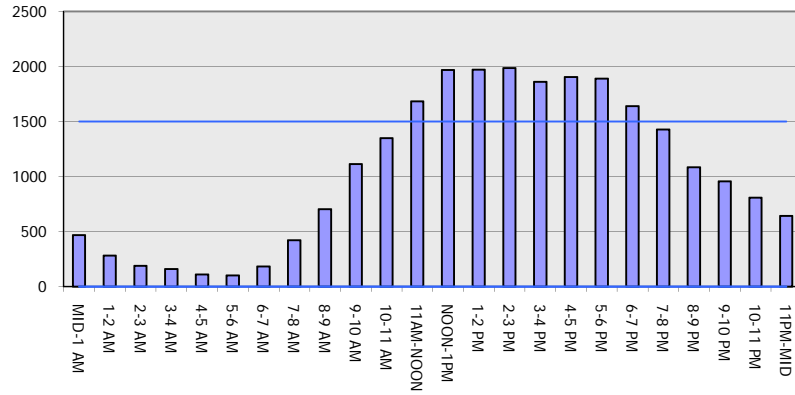
AUGUST

Analyzed for 2009
 Construction Season

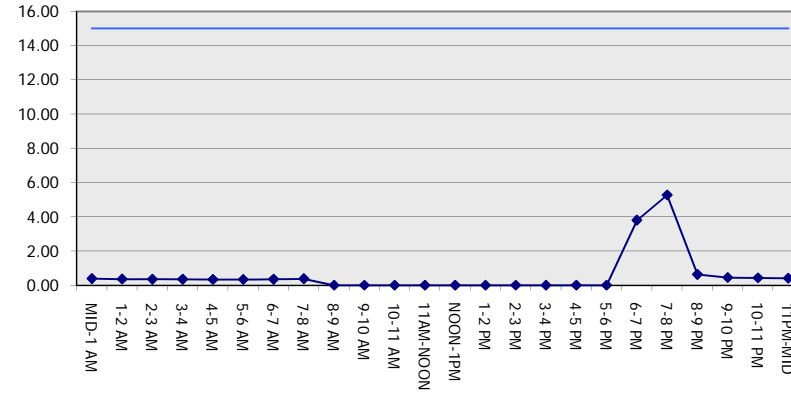
GRAPHICAL REPRESENTATION OF TRAFFIC MODEL INPUT AND OUTPUT

SATURDAY WESTBOUND DIRECTION

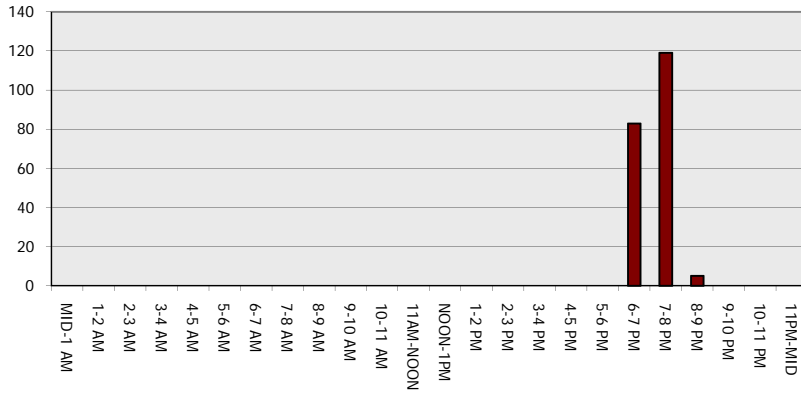
Main Route - Traffic Demand (Vehicles Per Hour)



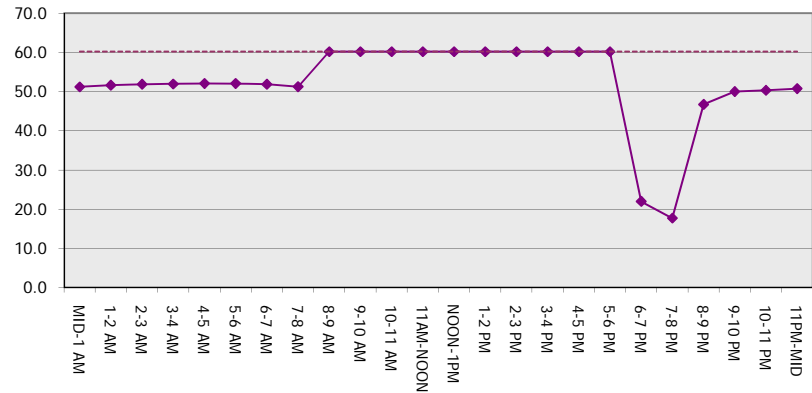
Main Route Average Delay Per Vehicle (Minutes)



Main Route - Average Queue Length (Vehicles)



Main Route - Average Speed (MPH)



USH 12/14: OLD SAUK RD TO GAMMON RD (DANE COUNTY) NIGHTTIME CLOSURE NO DIVERSION ROUTE (MAX QUEUE METHOD)	AUGUST
	Analyzed for 2009 Construction Season

SUMMARY OF TRAFFIC MODEL OUTPUT

SATURDAY EASTBOUND DIRECTION

TIME OF DAY	FLOWS AND CAPACITY IN VEH/HR							AVERAGE SPEEDS IN MPH		
	MAIN ROUTE		SITE CAPA CITY	FLOW		AV.DEL PER VEH (MINS)	AVERAGE QUEUE (VEH)	MAIN ROUTE		SITE
	DEMAND FLOW	PCT HEAVY		MAIN ROUTE	'DIVER TED'			WITHOUT WORK ZONE	WITH WORK ZONE	
MID-1 AM	625	0.0	1500	625	0	0.41	0	60.2	50.8	43.0
1-2 AM	339	0.0	1500	339	0	0.37	0	60.2	51.5	44.2
2-3 AM	190	0.0	1500	190	0	0.35	0	60.2	51.9	44.7
3-4 AM	154	0.0	1500	154	0	0.35	0	60.2	52.0	44.8
4-5 AM	99	0.0	1500	99	0	0.34	0	60.2	52.1	45.1
5-6 AM	101	0.0	1500	101	0	0.34	0	60.2	52.1	45.1
6-7 AM	167	0.0	1500	167	0	0.35	0	60.2	52.0	44.8
7-8 AM	404	0.0	1500	404	0	0.38	0	60.2	51.4	43.9
8-9 AM	709	0.0	OFF	709	0	0.00	0	60.2	60.2	60.2
9-10 AM	954	0.0	OFF	954	0	0.00	0	60.2	60.2	60.2
10-11 AM	1309	0.0	OFF	1309	0	0.00	0	60.2	60.2	60.2
11AM-NOON	1521	0.0	OFF	1521	0	0.00	0	60.2	60.2	60.2
NOON-1PM	1721	0.0	OFF	1721	0	0.00	0	60.2	60.2	60.2
1-2 PM	1827	0.0	OFF	1827	0	0.00	0	60.2	60.2	60.2
2-3 PM	1846	0.0	OFF	1846	0	0.00	0	60.2	60.2	60.2
3-4 PM	1821	0.0	OFF	1821	0	0.00	0	60.2	60.2	60.2
4-5 PM	1759	0.0	OFF	1759	0	0.00	0	60.2	60.2	60.2
5-6 PM	1711	0.0	OFF	1711	0	0.00	0	60.2	60.2	60.2
6-7 PM	1579	0.0	1499	1579	0	2.69	49	60.2	27.1	30.8
7-8 PM	1397	0.0	1499	1397	0	2.21	42	60.2	30.0	32.2
8-9 PM	1151	0.0	1500	1151	0	0.51	0	60.2	48.9	40.1
9-10 PM	1111	0.0	1500	1111	0	0.47	0	60.2	49.7	41.3
10-11 PM	979	0.0	1500	979	0	0.45	0	60.2	50.0	41.7
11PM-MID	692	0.0	1500	692	0	0.41	0	60.2	50.7	42.8

"OFF" INDICATES NO ROAD WORK (ALL LANES OPEN TO TRAFFIC)

----- SITE BREAKDOWN DELAYS -----	
BREAKDOWN DURATION (MINS)	0
RANGE OF QUEUE DELAY - MIN (VEH-H) MAX	0.0
AV BREAKDOWNS PER DAY	0.00
AV QUEUE DELAY/DAY (VEH-H)	0.0
AV TOTAL DELAY/DAY (VEH-H)	0.0

----- SITE ACCIDENT DELAYS -----	
BREAKDOWN DURATION (MINS)	0
RANGE OF QUEUE DELAY - MIN (VEH-H) MAX	0
AV BREAKDOWNS PER DAY	0
AV QUEUE DELAY/DAY (VEH-H)	0
AV TOTAL DELAY/DAY (VEH-H)	0

AVERAGE ACCIDENT NUMBERS (PIA/DAY)	
MAIN ROUTE WITHOUT WORKS	0.0085
MAIN ROUTE WITH WORKS	0.0079
'DIVERSION'	0.0000

PIA: Personal Injury Accidents

ECONOMIC IMPACT ON ROAD USERS	
ROAD USER COSTS PER DAY	\$2,741
CONGESTED HOURS PER DAY*	0

*Delays Exceeding User-Specified Maximum

**USH 12/14: OLD SAUK RD TO GAMMON RD (DANE COUNTY)
NIGHTTIME CLOSURE
NO DIVERSION ROUTE (MAX QUEUE METHOD)**

AUGUST
Analyzed for 2009
Construction Season

GRAPHICAL REPRESENTATION OF TRAFFIC MODEL INPUT AND OUTPUT
SATURDAY EASTBOUND DIRECTION

