

USH 12/14: OLD SAUK RD TO GAMMON RD (DANE COUNTY) NIGHTTIME CLOSURE NO DIVERSION ROUTE (MAX QUEUE METHOD)	AUGUST
	Analyzed for 2009 Construction Season

SUMMARY OF TRAFFIC MODEL OUTPUT

MON-THUR WESTBOUND DIRECTION

TIME OF DAY	FLOWS AND CAPACITY IN VEH/HR						AVERAGE SPEEDS IN MPH			
	MAIN ROUTE		SITE CAPA CITY	FLOW		AV.DEL PER VEH (MINS)	AVERAGE QUEUE (VEH)	MAIN ROUTE		SITE
	DEMAND FLOW	PCT HEAVY		MAIN ROUTE	'DIVER TED'			WITHOUT WORK ZONE	WITH WORK ZONE	
MID-1 AM	265	0.0	1500	265	0	0.36	0	60.2	51.7	44.4
1-2 AM	151	0.0	1500	151	0	0.35	0	60.2	52.0	44.9
2-3 AM	97	0.0	1500	97	0	0.34	0	60.2	52.1	45.1
3-4 AM	78	0.0	1500	78	0	0.34	0	60.2	52.2	45.2
4-5 AM	67	0.0	1500	67	0	0.34	0	60.2	52.2	45.2
5-6 AM	163	0.0	OFF	163	0	0.00	0	60.2	60.2	60.2
6-7 AM	527	0.0	OFF	527	0	0.00	0	60.2	60.2	60.2
7-8 AM	1691	0.0	OFF	1691	0	0.00	0	60.2	60.2	60.2
8-9 AM	3097	0.0	OFF	3097	0	0.00	0	54.8	54.8	54.8
9-10 AM	2419	0.0	OFF	2419	0	0.00	0	60.2	60.2	60.2
10-11 AM	1755	0.0	OFF	1755	0	0.00	0	60.2	60.2	60.2
11AM-NOON	1731	0.0	OFF	1731	0	0.00	0	60.2	60.2	60.2
NOON-1PM	1957	0.0	OFF	1957	0	0.00	0	60.2	60.2	60.2
1-2 PM	2152	0.0	OFF	2152	0	0.00	0	60.2	60.2	60.2
2-3 PM	2106	0.0	OFF	2106	0	0.00	0	60.2	60.2	60.2
3-4 PM	2205	0.0	OFF	2205	0	0.00	0	60.2	60.2	60.2
4-5 PM	2443	0.0	OFF	2443	0	0.00	0	60.2	60.2	60.2
5-6 PM	2983	0.0	OFF	2983	0	0.00	0	56.0	56.0	56.0
6-7 PM	2977	0.0	OFF	2977	0	0.00	0	56.0	56.0	56.0
7-8 PM	1998	0.0	1499	1931	67	10.74+	289	60.2	11.4	30.8
8-9 PM	1381	0.0	1499	1371	11	15.28+	389	60.2	9.3	30.8
9-10 PM	1122	0.0	1499	1122	0	3.65	136	60.2	22.9	36.0
10-11 PM	811	0.0	1500	811	0	0.43	0	60.2	50.4	42.4
11PM-MID	496	0.0	1500	496	0	0.39	0	60.2	51.1	43.5

"OFF" INDICATES NO ROAD WORK (ALL LANES OPEN TO TRAFFIC)

+ INDICATES QUEUEING EXCEEDS USER-SPECIFIED MAXIMUM LIMIT

----- SITE BREAKDOWN DELAYS -----	
BREAKDOWN DURATION (MINS)	0
RANGE OF QUEUE DELAY - MIN (VEH-H) MAX	0.0
AV BREAKDOWNS PER DAY	0.00
AV QUEUE DELAY/DAY (VEH-H)	0.0
AV TOTAL DELAY/DAY (VEH-H)	0.0

----- SITE ACCIDENT DELAYS -----	
BREAKDOWN DURATION (MINS)	0
RANGE OF QUEUE DELAY - MIN (VEH-H) MAX	0
AV BREAKDOWNS PER DAY	0
AV QUEUE DELAY/DAY (VEH-H)	0
AV TOTAL DELAY/DAY (VEH-H)	0

AVERAGE ACCIDENT NUMBERS (PIA/DAY)	
MAIN ROUTE WITHOUT WORKS	0.0121
MAIN ROUTE WITH WORKS	0.0117
'DIVERSION'	0.0001
PIA: Personal Injury Accidents	
IMPACTS ON ROAD USERS	
ROAD USER COSTS PER DAY	\$11,538
CONGESTED HOURS PER DAY*	2

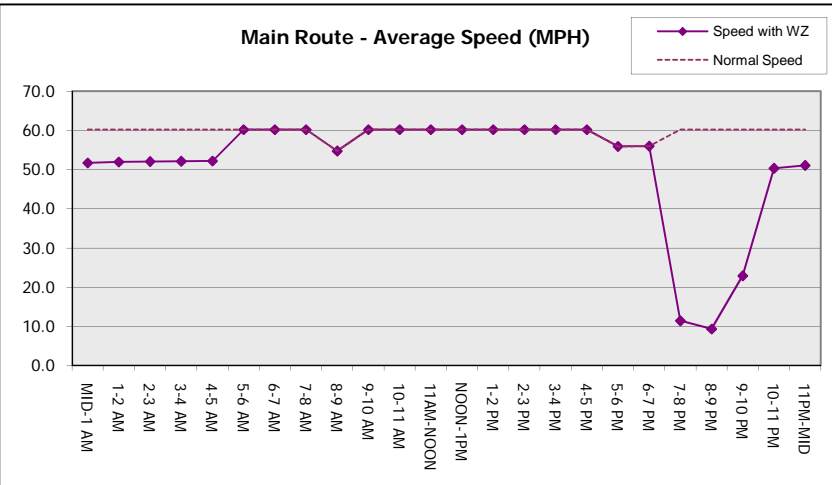
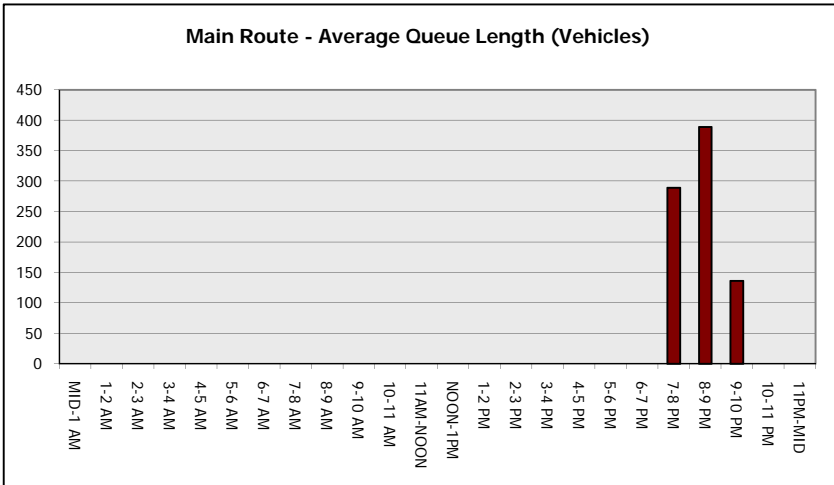
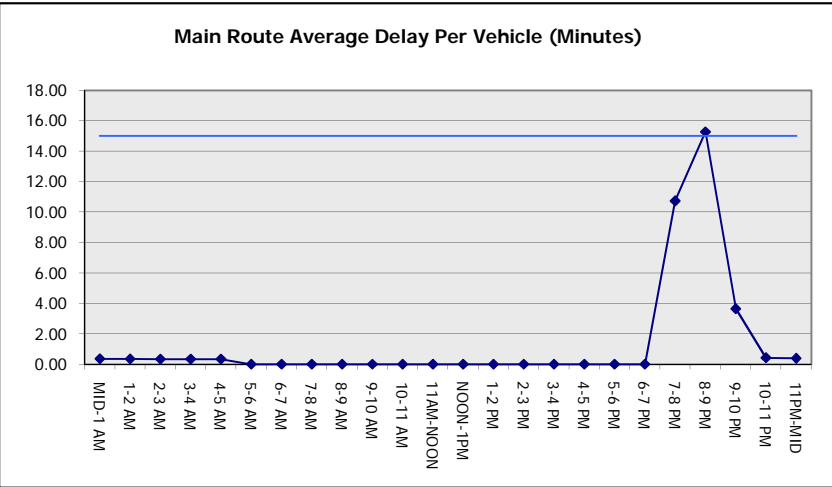
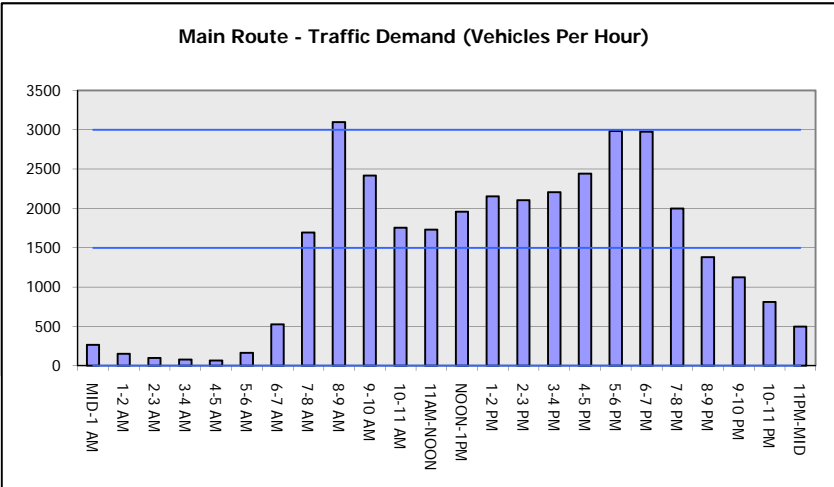
*Delays Exceeding User-Specified Maximum

USH 12/14: OLD SAUK RD TO GAMMON RD (DANE COUNTY)
NIGHTTIME CLOSURE
NO DIVERSION ROUTE (MAX QUEUE METHOD)

AUGUST
 Analyzed for 2009
 Construction Season

GRAPHICAL REPRESENTATION OF TRAFFIC MODEL INPUT AND OUTPUT

MON-THUR WESTBOUND DIRECTION



USH 12/14: OLD SAUK RD TO GAMMON RD (DANE COUNTY) NIGHTTIME CLOSURE NO DIVERSION ROUTE (MAX QUEUE METHOD)	AUGUST
	Analyzed for 2009 Construction Season

SUMMARY OF TRAFFIC MODEL OUTPUT

MON-THUR EASTBOUND DIRECTION

TIME OF DAY	FLOWS AND CAPACITY IN VEH/HR						AVERAGE SPEEDS IN MPH			
	MAIN ROUTE		SITE CAPA CITY	FLOW		AV.DEL PER VEH (MINS)	AVERAGE QUEUE (VEH)	MAIN ROUTE		SITE
	DEMAND FLOW	PCT HEAVY		MAIN ROUTE	'DIVER TED'			WITHOUT WORK ZONE	WITH WORK ZONE	
MID-1 AM	386	0.0	1500	386	0	0.38	0	60.2	51.4	44.0
1-2 AM	185	0.0	1500	185	0	0.35	0	60.2	51.9	44.7
2-3 AM	119	0.0	1500	119	0	0.34	0	60.2	52.1	45.0
3-4 AM	73	0.0	1500	73	0	0.34	0	60.2	52.2	45.2
4-5 AM	80	0.0	1500	80	0	0.34	0	60.2	52.2	45.1
5-6 AM	149	0.0	OFF	149	0	0.00	0	60.2	60.2	60.2
6-7 AM	536	0.0	OFF	536	0	0.00	0	60.2	60.2	60.2
7-8 AM	1446	0.0	OFF	1446	0	0.00	0	60.2	60.2	60.2
8-9 AM	2553	0.0	OFF	2553	0	0.00	0	60.2	60.2	60.2
9-10 AM	2185	0.0	OFF	2185	0	0.00	0	60.2	60.2	60.2
10-11 AM	1624	0.0	OFF	1624	0	0.00	0	60.2	60.2	60.2
11AM-NOON	1659	0.0	OFF	1659	0	0.00	0	60.2	60.2	60.2
NOON-1PM	1988	0.0	OFF	1988	0	0.00	0	60.2	60.2	60.2
1-2 PM	2143	0.0	OFF	2143	0	0.00	0	60.2	60.2	60.2
2-3 PM	2062	0.0	OFF	2062	0	0.00	0	60.2	60.2	60.2
3-4 PM	2189	0.0	OFF	2189	0	0.00	0	60.2	60.2	60.2
4-5 PM	2596	0.0	OFF	2596	0	0.00	0	59.9	59.9	59.9
5-6 PM	3081	0.0	OFF	3081	0	0.00	0	55.0	55.0	55.0
6-7 PM	2751	0.0	OFF	2751	0	0.00	0	58.3	58.3	58.3
7-8 PM	1851	0.0	1499	1851	0	8.22	217	60.2	13.5	30.8
8-9 PM	1394	0.0	1499	1394	0	12.58	316	60.2	10.2	30.8
9-10 PM	1263	0.0	1499	1263	0	5.24	139	60.2	17.9	32.6
10-11 PM	966	0.0	1500	966	0	0.45	0	60.2	50.0	41.8
11PM-MID	617	0.0	1500	617	0	0.40	0	60.2	50.9	43.0

"OFF" INDICATES NO ROAD WORK (ALL LANES OPEN TO TRAFFIC)

----- SITE BREAKDOWN DELAYS -----	
BREAKDOWN DURATION (MINS)	0
RANGE OF QUEUE DELAY - MIN (VEH-H) MAX	0.0
AV BREAKDOWNS PER DAY	0.00
AV QUEUE DELAY/DAY (VEH-H)	0.0
AV TOTAL DELAY/DAY (VEH-H)	0.0

----- SITE ACCIDENT DELAYS -----	
BREAKDOWN DURATION (MINS)	0
RANGE OF QUEUE DELAY - MIN (VEH-H) MAX	0
AV BREAKDOWNS PER DAY	0
AV QUEUE DELAY/DAY (VEH-H)	0
AV TOTAL DELAY/DAY (VEH-H)	0

AVERAGE ACCIDENT NUMBERS (PIA/DAY)	
MAIN ROUTE WITHOUT WORKS	0.0119
MAIN ROUTE WITH WORKS	0.0114
'DIVERSION'	0.0000

PIA: Personal Injury Accidents

ECONOMIC IMPACT ON ROAD USERS	
ROAD USER COSTS PER DAY	\$9,817
CONGESTED HOURS PER DAY*	0

*Delays Exceeding User-Specified Maximum

**USH 12/14: OLD SAUK RD TO GAMMON RD (DANE COUNTY)
NIGHTTIME CLOSURE
NO DIVERSION ROUTE (MAX QUEUE METHOD)**

AUGUST

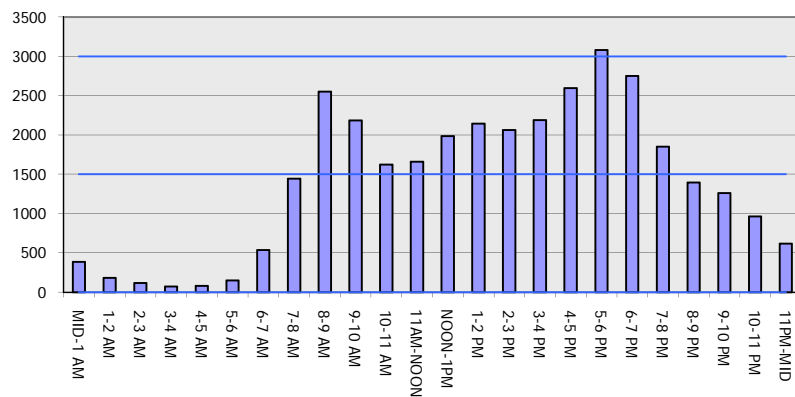
Analyzed for 2009
Construction Season

GRAPHICAL REPRESENTATION OF TRAFFIC MODEL INPUT AND OUTPUT

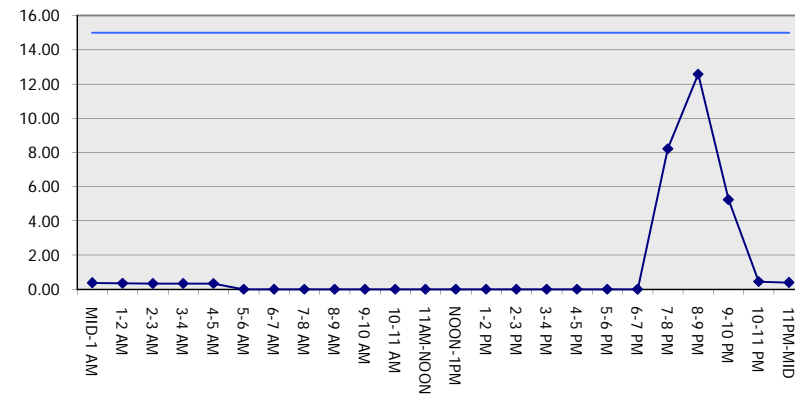
MON-THUR

EASTBOUND DIRECTION

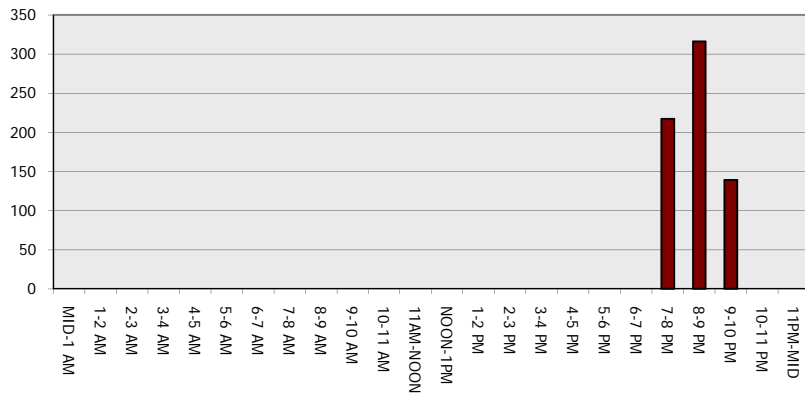
Main Route - Traffic Demand (Vehicles Per Hour)



Main Route Average Delay Per Vehicle (Minutes)



Main Route - Average Queue Length (Vehicles)



Main Route - Average Speed (MPH)

