

USH 12/14: OLD SAUK RD TO GAMMON RD (DANE COUNTY) NIGHTTIME CLOSURE NO DIVERSION ROUTE (MAX QUEUE METHOD)	AUGUST
	Analyzed for 2009 Construction Season

SUMMARY OF TRAFFIC MODEL OUTPUT

FRIDAY WESTBOUND DIRECTION

TIME OF DAY	FLOWS AND CAPACITY IN VEH/HR						AVERAGE SPEEDS IN MPH				
	MAIN ROUTE		SITE CAPA CITY	FLOW		AV.DEL PER VEH (MINS)	AVERAGE QUEUE (VEH)	MAIN ROUTE		SITE	
	DEMAND FLOW	PCT HEAVY		MAIN ROUTE	'DIVER TED'			WITHOUT WORK ZONE	WITH WORK ZONE		
MID-1 AM	311	0.0	1500	311	0	0.37	0	60.2	51.6	44.2	
1-2 AM	201	0.0	1500	201	0	0.35	0	60.2	51.9	44.6	
2-3 AM	136	0.0	1500	136	0	0.35	0	60.2	52.0	45.0	
3-4 AM	99	0.0	1500	99	0	0.34	0	60.2	52.1	45.1	
4-5 AM	80	0.0	1500	80	0	0.34	0	60.2	52.2	45.1	
5-6 AM	161	0.0	OFF	161	0	0.00	0	60.2	60.2	60.2	
6-7 AM	525	0.0	OFF	525	0	0.00	0	60.2	60.2	60.2	
7-8 AM	1563	0.0	OFF	1563	0	0.00	0	60.2	60.2	60.2	
8-9 AM	2842	0.0	OFF	2842	0	0.00	0	57.4	57.4	57.4	
9-10 AM	2292	0.0	OFF	2292	0	0.00	0	60.2	60.2	60.2	
10-11 AM	1806	0.0	OFF	1806	0	0.00	0	60.2	60.2	60.2	
11AM-NOON	1897	0.0	OFF	1897	0	0.00	0	60.2	60.2	60.2	
NOON-1PM	2164	0.0	OFF	2164	0	0.00	0	60.2	60.2	60.2	
1-2 PM	2404	0.0	OFF	2404	0	0.00	0	60.2	60.2	60.2	
2-3 PM	2384	0.0	OFF	2384	0	0.00	0	60.2	60.2	60.2	
3-4 PM	2565	0.0	OFF	2565	0	0.00	0	60.2	60.2	60.2	
4-5 PM	2732	0.0	OFF	2732	0	0.00	0	58.5	58.5	58.5	
5-6 PM	2938	0.0	OFF	2938	0	0.00	0	56.4	56.4	56.4	
6-7 PM	2760	0.0	OFF	2760	0	0.00	0	58.2	58.2	58.2	
7-8 PM	2043	0.0	1499	1911	132	10.80+	292	60.2	11.4	30.8	
8-9 PM	1532	0.0	1499	1462	69	16.03+	408	60.2	9.1	30.8	
9-10 PM	1168	0.0	1499	1168	0	8.08	224	60.2	13.7	33.2	
10-11 PM	992	0.0	1500	992	0	0.50	1	60.2	48.9	41.7	
11PM-MID	707	0.0	1500	707	0	0.42	0	60.2	50.6	42.7	

"OFF" INDICATES NO ROAD WORK (ALL LANES OPEN TO TRAFFIC)

+ INDICATES QUEUEING EXCEEDS USER-SPECIFIED MAXIMUM LIMIT

----- SITE BREAKDOWN DELAYS -----	
BREAKDOWN DURATION (MINS)	0
RANGE OF QUEUE DELAY - MIN (VEH-H) MAX	0.0
AV BREAKDOWNS PER DAY	0.00
AV QUEUE DELAY/DAY (VEH-H)	0.0
AV TOTAL DELAY/DAY (VEH-H)	0.0

----- SITE ACCIDENT DELAYS -----	
BREAKDOWN DURATION (MINS)	0
RANGE OF QUEUE DELAY - MIN (VEH-H) MAX	0
AV BREAKDOWNS PER DAY	0
AV QUEUE DELAY/DAY (VEH-H)	0
AV TOTAL DELAY/DAY (VEH-H)	0

AVERAGE ACCIDENT NUMBERS (PIA/DAY)	
MAIN ROUTE WITHOUT WORKS	0.0127
MAIN ROUTE WITH WORKS	0.0122
'DIVERSION'	0.0002
PIA: Personal Injury Accidents	
IMPACTS ON ROAD USERS	
ROAD USER COSTS PER DAY	\$14,262
CONGESTED HOURS PER DAY*	2

*Delays Exceeding User-Specified Maximum

USH 12/14: OLD SAUK RD TO GAMMON RD (DANE COUNTY)
NIGHTTIME CLOSURE
NO DIVERSION ROUTE (MAX QUEUE METHOD)

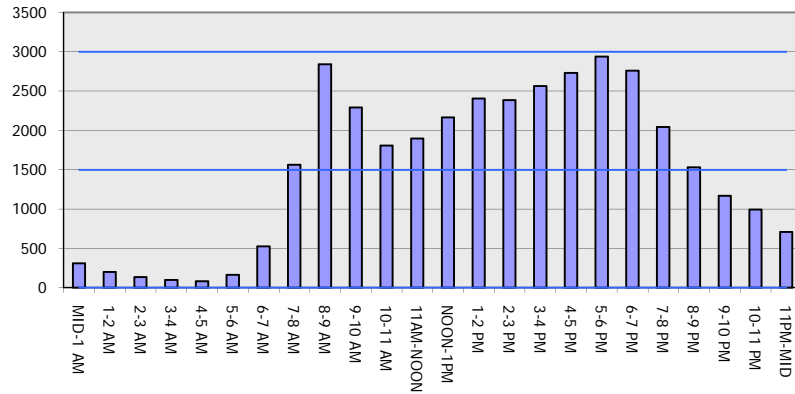
AUGUST

Analyzed for 2009
 Construction Season

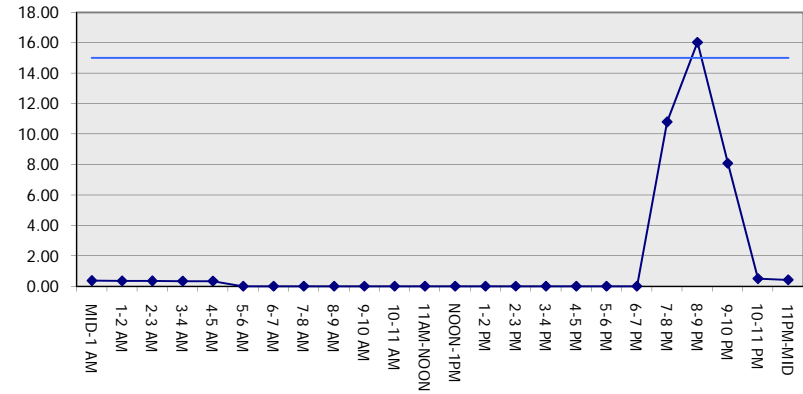
GRAPHICAL REPRESENTATION OF TRAFFIC MODEL INPUT AND OUTPUT

FRIDAY WESTBOUND DIRECTION

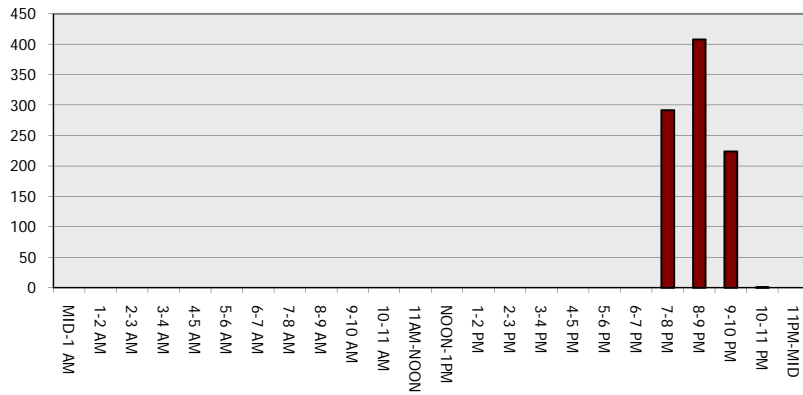
Main Route - Traffic Demand (Vehicles Per Hour)



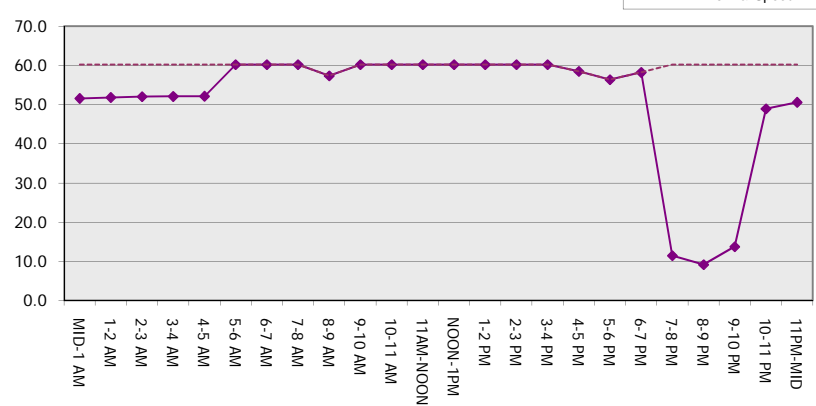
Main Route Average Delay Per Vehicle (Minutes)



Main Route - Average Queue Length (Vehicles)



Main Route - Average Speed (MPH)



USH 12/14: OLD SAUK RD TO GAMMON RD (DANE COUNTY) NIGHTTIME CLOSURE NO DIVERSION ROUTE (MAX QUEUE METHOD)	AUGUST
	Analyzed for 2009 Construction Season

SUMMARY OF TRAFFIC MODEL OUTPUT

FRIDAY EASTBOUND DIRECTION

TIME OF DAY	FLOWS AND CAPACITY IN VEH/HR						AVERAGE SPEEDS IN MPH			
	MAIN ROUTE		SITE CAPA CITY	FLOW		AV.DEL PER VEH (MINS)	AVERAGE QUEUE (VEH)	MAIN ROUTE		SITE
	DEMAND FLOW	PCT HEAVY		MAIN ROUTE	'DIVER TED'			WITHOUT WORK ZONE	WITH WORK ZONE	
MID-1 AM	548	0.0	1500	548	0	0.40	0	60.2	51.0	43.3
1-2 AM	242	0.0	1500	242	0	0.36	0	60.2	51.8	44.5
2-3 AM	146	0.0	1500	146	0	0.35	0	60.2	52.0	44.9
3-4 AM	98	0.0	1500	98	0	0.34	0	60.2	52.1	45.1
4-5 AM	97	0.0	1500	97	0	0.34	0	60.2	52.1	45.1
5-6 AM	147	0.0	OFF	147	0	0.00	0	60.2	60.2	60.2
6-7 AM	493	0.0	OFF	493	0	0.00	0	60.2	60.2	60.2
7-8 AM	1370	0.0	OFF	1370	0	0.00	0	60.2	60.2	60.2
8-9 AM	2353	0.0	OFF	2353	0	0.00	0	60.2	60.2	60.2
9-10 AM	2042	0.0	OFF	2042	0	0.00	0	60.2	60.2	60.2
10-11 AM	1688	0.0	OFF	1688	0	0.00	0	60.2	60.2	60.2
11AM-NOON	1792	0.0	OFF	1792	0	0.00	0	60.2	60.2	60.2
NOON-1PM	2191	0.0	OFF	2191	0	0.00	0	60.2	60.2	60.2
1-2 PM	2387	0.0	OFF	2387	0	0.00	0	60.2	60.2	60.2
2-3 PM	2340	0.0	OFF	2340	0	0.00	0	60.2	60.2	60.2
3-4 PM	2414	0.0	OFF	2414	0	0.00	0	60.2	60.2	60.2
4-5 PM	2704	0.0	OFF	2704	0	0.00	0	58.8	58.8	58.8
5-6 PM	2760	0.0	OFF	2760	0	0.00	0	58.2	58.2	58.2
6-7 PM	2423	0.0	OFF	2423	0	0.00	0	60.2	60.2	60.2
7-8 PM	1814	0.0	1499	1814	0	7.20	189	60.2	14.6	30.8
8-9 PM	1394	0.0	1499	1394	0	11.22	279	60.2	10.9	30.8
9-10 PM	1210	0.0	1499	1210	0	2.55	82	60.2	27.8	35.3
10-11 PM	1078	0.0	1500	1078	0	0.46	0	60.2	49.7	41.4
11PM-MID	795	0.0	1500	795	0	0.43	0	60.2	50.4	42.4

"OFF" INDICATES NO ROAD WORK (ALL LANES OPEN TO TRAFFIC)

BREAKDOWN DURATION (MINS)	0
RANGE OF QUEUE DELAY - MIN (VEH-H) MAX	0.0
AV BREAKDOWNS PER DAY	0.00
AV QUEUE DELAY/DAY (VEH-H)	0.0
AV TOTAL DELAY/DAY (VEH-H)	0.0

BREAKDOWN DURATION (MINS)	0
RANGE OF QUEUE DELAY - MIN (VEH-H) MAX	0
AV BREAKDOWNS PER DAY	0
AV QUEUE DELAY/DAY (VEH-H)	0
AV TOTAL DELAY/DAY (VEH-H)	0

MAIN ROUTE WITHOUT WORKS	0.0121
MAIN ROUTE WITH WORKS	0.0116
'DIVERSION'	0.0000

PIA: Personal Injury Accidents

ROAD USER COSTS PER DAY	\$8,248
CONGESTED HOURS PER DAY*	0

*Delays Exceeding User-Specified Maximum

**USH 12/14: OLD SAUK RD TO GAMMON RD (DANE COUNTY)
NIGHTTIME CLOSURE
NO DIVERSION ROUTE (MAX QUEUE METHOD)**

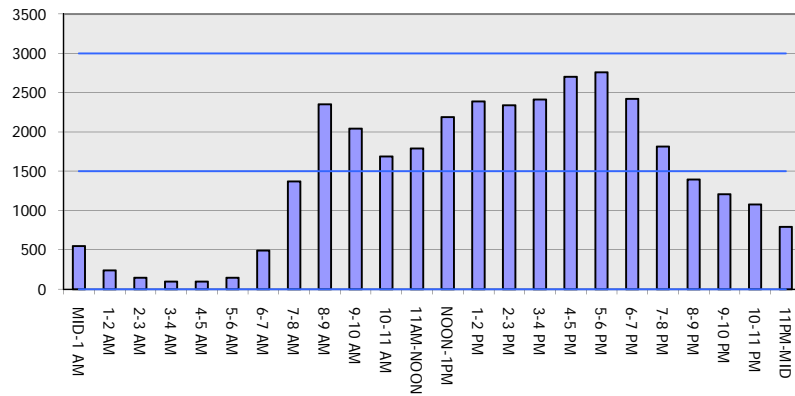
AUGUST

Analyzed for 2009
Construction Season

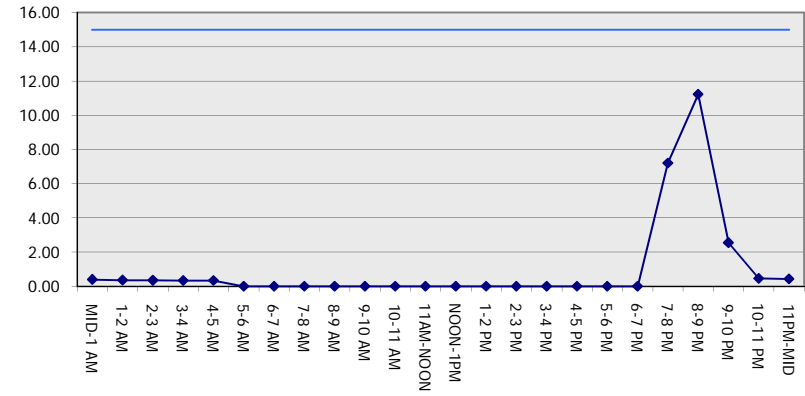
GRAPHICAL REPRESENTATION OF TRAFFIC MODEL INPUT AND OUTPUT

FRIDAY EASTBOUND DIRECTION

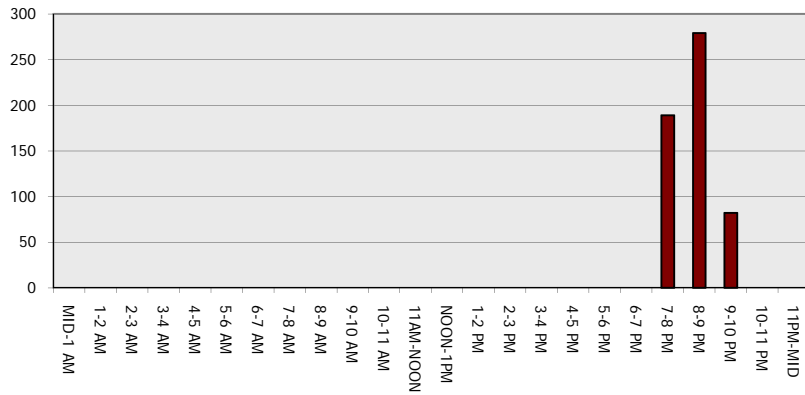
Main Route - Traffic Demand (Vehicles Per Hour)



Main Route Average Delay Per Vehicle (Minutes)



Main Route - Average Queue Length (Vehicles)



Main Route - Average Speed (MPH)

