

USH 12/14: OLD SAUK RD TO GAMMON RD (DANE COUNTY) NIGHTTIME CLOSURE NO DIVERSION ROUTE (MAX QUEUE METHOD)	MAY
	Analyzed for 2009 Construction Season

SUMMARY OF TRAFFIC MODEL OUTPUT

SUNDAY WESTBOUND DIRECTION

TIME OF DAY	FLOWS AND CAPACITY IN VEH/HR						AVERAGE SPEEDS IN MPH			
	MAIN ROUTE		SITE CAPA CITY	FLOW		AV.DEL PER VEH (MINS)	AVERAGE QUEUE (VEH)	MAIN ROUTE		SITE
	DEMAND FLOW	PCT HEAVY		MAIN ROUTE	'DIVER TED'			WITHOUT WORK ZONE	WITH WORK ZONE	
MID-1 AM	429	0.0	1500	429	0	0.38	0	60.2	51.3	43.8
1-2 AM	254	0.0	1500	254	0	0.36	0	60.2	51.7	44.5
2-3 AM	168	0.0	1500	168	0	0.35	0	60.2	52.0	44.8
3-4 AM	161	0.0	1500	161	0	0.35	0	60.2	52.0	44.8
4-5 AM	89	0.0	1500	89	0	0.34	0	60.2	52.2	45.1
5-6 AM	73	0.0	1500	73	0	0.34	0	60.2	52.2	45.2
6-7 AM	109	0.0	1500	109	0	0.34	0	60.2	52.1	45.0
7-8 AM	197	0.0	1500	197	0	0.35	0	60.2	51.9	44.7
8-9 AM	411	0.0	1500	411	0	0.38	0	60.2	51.4	43.8
9-10 AM	645	0.0	OFF	645	0	0.00	0	60.2	60.2	60.2
10-11 AM	912	0.0	OFF	912	0	0.00	0	60.2	60.2	60.2
11AM-NOON	1316	0.0	OFF	1316	0	0.00	0	60.2	60.2	60.2
NOON-1PM	1475	0.0	OFF	1475	0	0.00	0	60.2	60.2	60.2
1-2 PM	1687	0.0	OFF	1687	0	0.00	0	60.2	60.2	60.2
2-3 PM	1514	0.0	OFF	1514	0	0.00	0	60.2	60.2	60.2
3-4 PM	1537	0.0	OFF	1537	0	0.00	0	60.2	60.2	60.2
4-5 PM	1639	0.0	OFF	1639	0	0.00	0	60.2	60.2	60.2
5-6 PM	1486	0.0	OFF	1486	0	0.00	0	60.2	60.2	60.2
6-7 PM	1316	0.0	OFF	1316	0	0.00	0	60.2	60.2	60.2
7-8 PM	1116	0.0	1500	1116	0	0.47	0	60.2	49.7	41.3
8-9 PM	859	0.0	1500	859	0	0.43	0	60.2	50.2	42.2
9-10 PM	711	0.0	1500	711	0	0.42	0	60.2	50.6	42.7
10-11 PM	513	0.0	1500	513	0	0.39	0	60.2	51.1	43.5
11PM-MID	378	0.0	1500	378	0	0.38	0	60.2	51.4	44.0

"OFF" INDICATES NO ROAD WORK (ALL LANES OPEN TO TRAFFIC)

----- SITE BREAKDOWN DELAYS -----	
BREAKDOWN DURATION (MINS)	0
RANGE OF QUEUE DELAY - MIN (VEH-H) MAX	0.0
AV BREAKDOWNS PER DAY	0.00
AV QUEUE DELAY/DAY (VEH-H)	0.0
AV TOTAL DELAY/DAY (VEH-H)	0.0

----- SITE ACCIDENT DELAYS -----	
BREAKDOWN DURATION (MINS)	0
RANGE OF QUEUE DELAY - MIN (VEH-H) MAX	0
AV BREAKDOWNS PER DAY	0
AV QUEUE DELAY/DAY (VEH-H)	0
AV TOTAL DELAY/DAY (VEH-H)	0

AVERAGE ACCIDENT NUMBERS (PIA/DAY)	
MAIN ROUTE WITHOUT WORKS	0.0066
MAIN ROUTE WITH WORKS	0.0063
'DIVERSION'	0.0000
PIA: Personal Injury Accidents	
IMPACTS ON ROAD USERS	
ROAD USER COSTS PER DAY	\$537
CONGESTED HOURS PER DAY*	0

*Delays Exceeding User-Specified Maximum

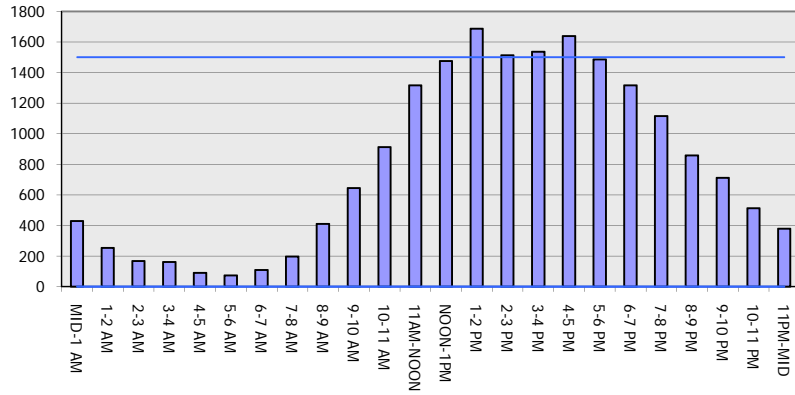
USH 12/14: OLD SAUK RD TO GAMMON RD (DANE COUNTY)
NIGHTTIME CLOSURE
NO DIVERSION ROUTE (MAX QUEUE METHOD)

MAY
 Analyzed for 2009
 Construction Season

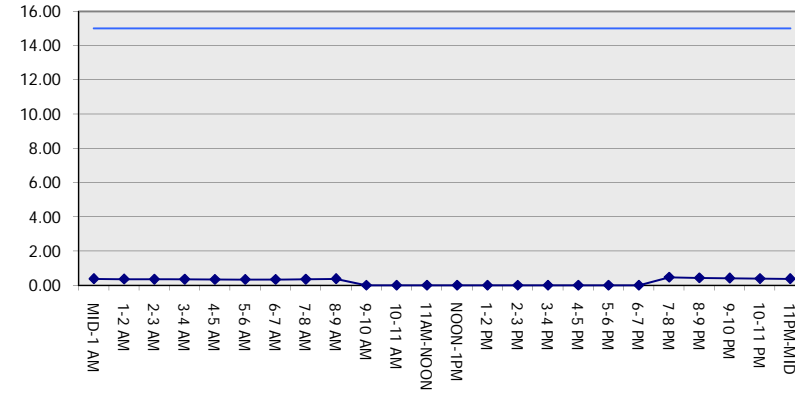
GRAPHICAL REPRESENTATION OF TRAFFIC MODEL INPUT AND OUTPUT

SUNDAY WESTBOUND DIRECTION

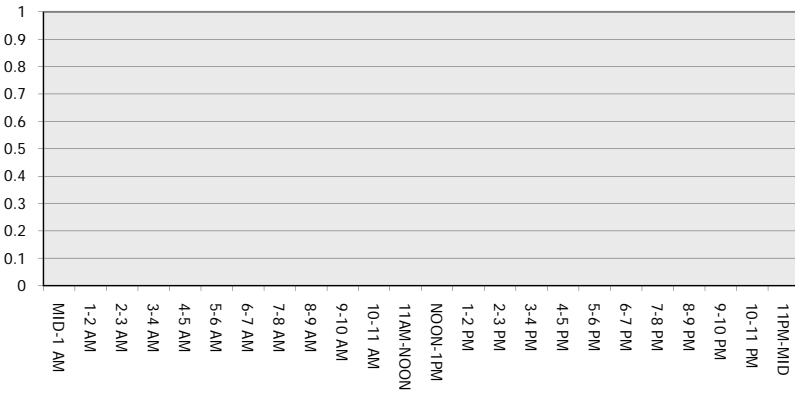
Main Route - Traffic Demand (Vehicles Per Hour)



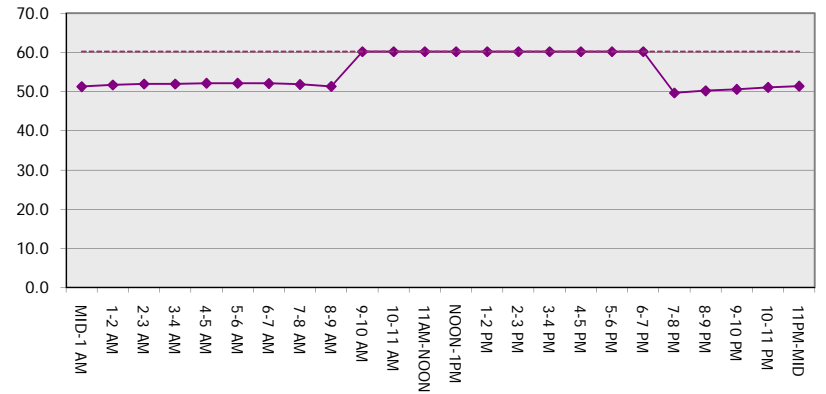
Main Route Average Delay Per Vehicle (Minutes)



Main Route - Average Queue Length (Vehicles)



Main Route - Average Speed (MPH)



USH 12/14: OLD SAUK RD TO GAMMON RD (DANE COUNTY) NIGHTTIME CLOSURE NO DIVERSION ROUTE (MAX QUEUE METHOD)	MAY
	Analyzed for 2009 Construction Season

SUMMARY OF TRAFFIC MODEL OUTPUT

SUNDAY EASTBOUND DIRECTION

TIME OF DAY	FLOWS AND CAPACITY IN VEH/HR						AVERAGE SPEEDS IN MPH			
	MAIN ROUTE		SITE CAPA CITY	FLOW		AV.DEL PER VEH (MINS)	AVERAGE QUEUE (VEH)	MAIN ROUTE		SITE
	DEMAND FLOW	PCT HEAVY		MAIN ROUTE	'DIVER TED'			WITHOUT WORK ZONE	WITH WORK ZONE	
MID-1 AM	509	0.0	1500	509	0	0.39	0	60.2	51.1	43.5
1-2 AM	317	0.0	1500	317	0	0.37	0	60.2	51.6	44.2
2-3 AM	179	0.0	1500	179	0	0.35	0	60.2	51.9	44.8
3-4 AM	128	0.0	1500	128	0	0.34	0	60.2	52.0	45.0
4-5 AM	84	0.0	1500	84	0	0.34	0	60.2	52.2	45.1
5-6 AM	64	0.0	1500	64	0	0.34	0	60.2	52.2	45.2
6-7 AM	123	0.0	1500	123	0	0.34	0	60.2	52.0	45.0
7-8 AM	283	0.0	1500	283	0	0.36	0	60.2	51.7	44.3
8-9 AM	378	0.0	1500	378	0	0.38	0	60.2	51.4	44.0
9-10 AM	630	0.0	OFF	630	0	0.00	0	60.2	60.2	60.2
10-11 AM	962	0.0	OFF	962	0	0.00	0	60.2	60.2	60.2
11AM-NOON	1281	0.0	OFF	1281	0	0.00	0	60.2	60.2	60.2
NOON-1PM	1456	0.0	OFF	1456	0	0.00	0	60.2	60.2	60.2
1-2 PM	1695	0.0	OFF	1695	0	0.00	0	60.2	60.2	60.2
2-3 PM	1653	0.0	OFF	1653	0	0.00	0	60.2	60.2	60.2
3-4 PM	1614	0.0	OFF	1614	0	0.00	0	60.2	60.2	60.2
4-5 PM	1707	0.0	OFF	1707	0	0.00	0	60.2	60.2	60.2
5-6 PM	1546	0.0	OFF	1546	0	0.00	0	60.2	60.2	60.2
6-7 PM	1421	0.0	OFF	1421	0	0.00	0	60.2	60.2	60.2
7-8 PM	1152	0.0	1500	1152	0	0.51	0	60.2	48.8	40.1
8-9 PM	947	0.0	1500	947	0	0.45	0	60.2	50.1	41.9
9-10 PM	813	0.0	1500	813	0	0.43	0	60.2	50.4	42.4
10-11 PM	599	0.0	1500	599	0	0.40	0	60.2	50.9	43.2
11PM-MID	414	0.0	1500	414	0	0.38	0	60.2	51.4	43.8

"OFF" INDICATES NO ROAD WORK (ALL LANES OPEN TO TRAFFIC)

----- SITE BREAKDOWN DELAYS -----	
BREAKDOWN DURATION (MINS)	0
RANGE OF QUEUE DELAY - MIN (VEH-H) MAX	0.0
AV BREAKDOWNS PER DAY	0.00
AV QUEUE DELAY/DAY (VEH-H)	0.0
AV TOTAL DELAY/DAY (VEH-H)	0.0

----- SITE ACCIDENT DELAYS -----	
BREAKDOWN DURATION (MINS)	0
RANGE OF QUEUE DELAY - MIN (VEH-H) MAX	0
AV BREAKDOWNS PER DAY	0
AV QUEUE DELAY/DAY (VEH-H)	0
AV TOTAL DELAY/DAY (VEH-H)	0

AVERAGE ACCIDENT NUMBERS (PIA/DAY)	
MAIN ROUTE WITHOUT WORKS	0.0070
MAIN ROUTE WITH WORKS	0.0066
'DIVERSION'	0.0000

PIA: Personal Injury Accidents

ECONOMIC IMPACT ON ROAD USERS	
ROAD USER COSTS PER DAY	\$609
CONGESTED HOURS PER DAY*	0

*Delays Exceeding User-Specified Maximum

**USH 12/14: OLD SAUK RD TO GAMMON RD (DANE COUNTY)
NIGHTTIME CLOSURE
NO DIVERSION ROUTE (MAX QUEUE METHOD)**

MAY
Analyzed for 2009
Construction Season

GRAPHICAL REPRESENTATION OF TRAFFIC MODEL INPUT AND OUTPUT
SUNDAY EASTBOUND DIRECTION

