

IH 39/90: BELTLINE TO STH 73 (DANE COUNTY) NIGHTTIME CLOSURE DIVERSION ROUTE: STH 73 - USH 12	AUGUST
	Analyzed for 2009 Construction Season

SUMMARY OF TRAFFIC MODEL OUTPUT

SUNDAY WESTBOUND DIRECTION

TIME OF DAY	FLOWS AND CAPACITY IN VEH/HR							AVERAGE SPEEDS IN MPH							
	MAIN ROUTE		ALTERNATE ROUTE		SITE CAPA CITY	FLOW MAIN ROUTE	FLOW DIVER -TING	TOTAL DIVN FLOW	AV.DEL PER VEH (MINS)	AVERAGE QUEUE (VEH)	MAIN ROUTE		ALTERNATE ROUTE		
	DEMAND FLOW	PCT HEAVY	NORMAL FLOW	PCT HEAVY							WITHOUT WORK ZN	WITH WORK ZN	SITE	WITHOUT WORK ZN	WITH WORK ZN
MID-1 AM	374	0.0	67	0.0	1500	374	0	67	0.46	0	65.7	63.9	44.0	38.9	38.9
1-2 AM	242	0.0	43	0.0	1500	242	0	43	0.45	0	66.0	64.1	44.5	39.2	39.2
2-3 AM	224	0.0	40	0.0	1500	224	0	40	0.44	0	66.0	64.2	44.6	39.2	39.2
3-4 AM	175	0.0	31	0.0	1500	175	0	31	0.44	0	66.1	64.3	44.8	39.4	39.4
4-5 AM	200	0.0	36	0.0	1500	200	0	36	0.44	0	66.0	64.3	44.7	39.3	39.3
5-6 AM	284	0.0	50	0.0	1500	284	0	50	0.45	0	65.8	64.1	44.3	39.1	39.1
6-7 AM	447	0.0	80	0.0	1500	447	0	80	0.47	0	65.6	63.7	43.7	38.8	38.8
7-8 AM	785	0.0	140	0.0	1500	785	0	140	0.50	0	64.9	63.0	42.5	38.0	38.0
8-9 AM	1232	0.0	221	0.0	1499	1232	0	221	0.69	0	64.1	61.5	37.6	37.0	37.0
9-10 AM	1834	0.0	329	0.0	OFF	1834	0	329	0.00	0	63.0	63.0	63.0	35.6	35.6
10-11 AM	2314	0.0	414	0.0	OFF	2314	0	414	0.00	0	62.1	62.1	62.1	34.6	34.6
11A-NOON	2582	0.0	463	0.0	OFF	2582	0	463	0.00	0	60.1	60.1	60.1	34.0	34.0
NOON-1PM	2732	0.0	490	0.0	OFF	2732	0	490	0.00	0	58.5	58.5	58.5	33.7	33.7
1-2 PM	2714	0.0	487	0.0	OFF	2714	0	487	0.00	0	58.7	58.7	58.7	33.7	33.7
2-3 PM	2664	0.0	477	0.0	OFF	2664	0	477	0.00	0	59.2	59.2	59.2	33.8	33.8
3-4 PM	2371	0.0	425	0.0	OFF	2371	0	425	0.00	0	62.0	62.0	62.0	34.5	34.5
4-5 PM	2249	0.0	403	0.0	OFF	2249	0	403	0.00	0	62.2	62.2	62.2	34.7	34.7
5-6 PM	1949	0.0	350	0.0	OFF	1949	0	350	0.00	0	62.8	62.8	62.8	35.4	35.4
6-7 PM	1678	0.0	300	0.0	OFF	1678	0	300	0.00	0	63.3	63.3	63.3	36.0	36.0
7-8 PM	1677	0.0	300	0.0	1499	1677	0	300	4.48	97	63.3	50.1	30.8	36.0	36.0
8-9 PM	1384	0.0	248	0.0	1499	1384	0	248	6.11	139	63.8	46.8	31.3	36.6	36.6
9-10 PM	1050	0.0	188	0.0	1500	1049	0	188	0.71	5	64.5	61.8	41.2	37.4	37.4
10-11 PM	811	0.0	145	0.0	1500	811	0	145	0.50	0	64.9	63.0	42.4	37.9	37.9
11PM-MID	600	0.0	108	0.0	1500	600	0	108	0.48	0	65.3	63.4	43.2	38.4	38.4

"OFF" INDICATES NO ROAD WORK (ALL LANES OPEN TO TRAFFIC)

----- SITE BREAKDOWN DELAYS -----	
BREAKDOWN DURATION (MINS)	0
RANGE OF QUEUE DELAY - MIN	0.0
(VEH-H) MAX	0.0
RANGE OF DIVN DELAY - MIN	0.0
(VEH-H) MAX	0.0
AV BREAKDOWNS PER DAY	0.00
AV QUEUE DELAY/DAY (VEH-H)	0.0
AV DIVN DELAY/DAY (VEH-H)	0.0
AV TOTAL DELAY/DAY (VEH-H)	0.0

----- SITE ACCIDENT DELAYS -----	
ACCIDENT DURATION (MINS)	0
RANGE OF QUEUE DELAY - MIN	0.0
(VEH-H) MAX	0.0
RANGE OF DIVN DELAY - MIN	0.0
(VEH-H) MAX	0.0
AV ACCIDENTS PER DAY	0.00
AV QUEUE DELAY/DAY (VEH-H)	0.0
AV DIVN DELAY/DAY (VEH-H)	0.0
AV TOTAL DELAY/DAY (VEH-H)	0.0

AVERAGE ACCIDENT NUMBERS (PIA/DAY)	
MAIN ROUTE WITHOUT WORKS	0.0928
MAIN ROUTE WITH WORKS	0.0922
DIVERSION	0.1522

PIA: Personal Injury Accidents

IMPACTS ON ROAD USERS	
ROAD USER COSTS PER DAY (DOLLARS)	\$5,666
CONGESTED HOURS PER DAY*	0

*Delays Exceeding 15 Minutes

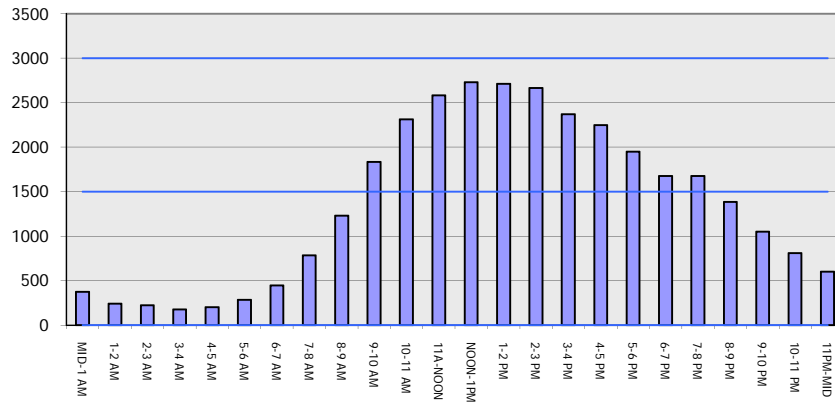
**IH 39/90: BELTLINE TO STH 73 (DANE COUNTY)
 NIGHTTIME CLOSURE
 DIVERSION ROUTE: STH 73 - USH 12**

AUGUST
 Analyzed for 2009
 Construction Season

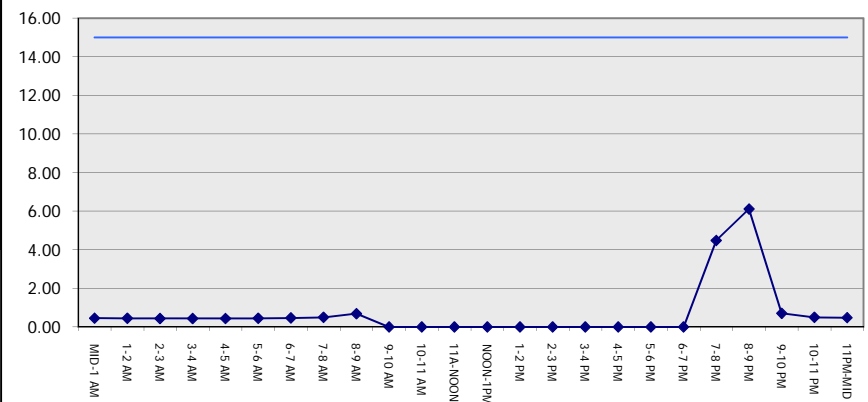
GRAPHICAL REPRESENTATION OF TRAFFIC MODEL INPUT AND OUTPUT

SUNDAY WESTBOUND DIRECTION

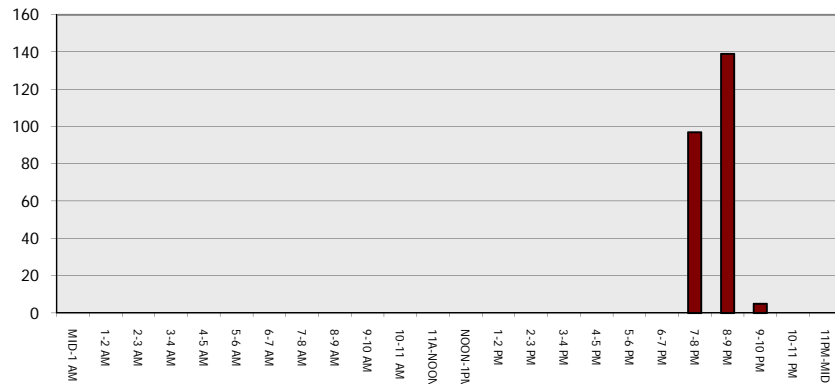
Main Route - Traffic Demand (Vehicles Per Hour)



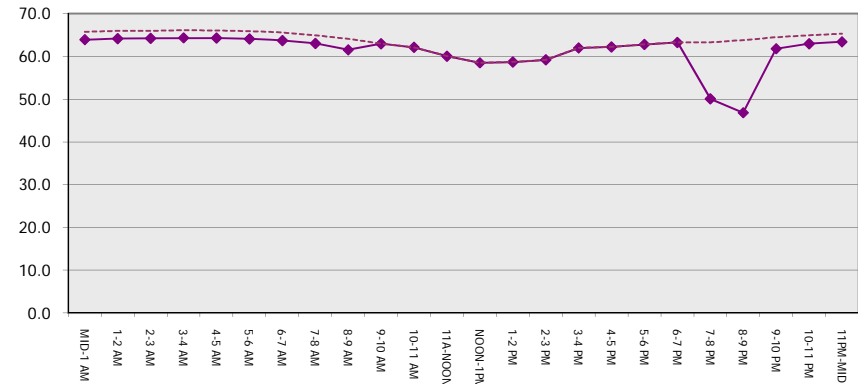
Main Route Average Delay Per Vehicle (Minutes)



Main Route - Average Queue Length (Vehicles)



Main Route - Average Speed (MPH)



IH 39/90: BELTLINE TO STH 73 (DANE COUNTY) NIGHTTIME CLOSURE DIVERSION ROUTE: STH 73 - USH 12	AUGUST
	Analyzed for 2009 Construction Season

SUMMARY OF TRAFFIC MODEL OUTPUT	
SUNDAY	EASTBOUND DIRECTION

TIME OF DAY	FLOWS AND CAPACITY IN VEH/HR								AVERAGE SPEEDS IN MPH						
	MAIN		DIVERSION		SITE CAPA CITY	FLOW MAIN ROUTE	FLOW DIVER -TING	TOTAL DIVN FLOW	AV.DEL PER VEH (MINS)	AVERAGE QUEUE (VEH)	MAIN ROUTE		SITE	ALTERNATE ROUTE	
	DEMAND FLOW	PCT HEAVY	NORMAL FLOW	PCT HEAVY							WITHOUT WORK ZN	WITH WORK ZN		WITHOUT WORK ZN	WITH WORK ZN
MID-1 AM	452	0.0	81	0.0	1500	452	0	81	0.47	0	65.5	63.7	43.7	38.8	38.8
1-2 AM	361	0.0	65	0.0	1500	361	0	65	0.46	0	65.7	63.9	44.0	38.9	38.9
2-3 AM	312	0.0	55	0.0	1500	312	0	55	0.45	0	65.8	64.0	44.2	39.1	39.1
3-4 AM	244	0.0	44	0.0	1500	244	0	44	0.45	0	66.0	64.1	44.5	39.2	39.2
4-5 AM	219	0.0	39	0.0	1500	219	0	39	0.44	0	66.0	64.2	44.6	39.2	39.2
5-6 AM	252	0.0	45	0.0	1500	252	0	45	0.45	0	65.9	64.1	44.5	39.2	39.2
6-7 AM	459	0.0	83	0.0	1500	459	0	83	0.47	0	65.5	63.7	43.7	38.7	38.7
7-8 AM	769	0.0	138	0.0	1500	769	0	138	0.50	0	65.0	63.0	42.5	38.0	38.0
8-9 AM	1226	0.0	220	0.0	1499	1226	0	220	0.69	0	64.1	61.5	37.6	37.0	37.0
9-10 AM	1914	0.0	343	0.0	OFF	1914	0	343	0.00	0	62.8	62.8	62.8	35.5	35.5
10-11 AM	2756	0.0	494	0.0	OFF	2756	0	494	0.00	0	58.2	58.2	58.2	33.6	33.6
11A-NOON	3354	0.0	601	0.0	OFF	3354	0	601	0.00	0	52.2	52.2	52.2	32.3	32.3
NOON-1PM	3536	0.0	633	0.0	OFF	3536	0	633	0.00	0	50.3	50.3	50.3	31.9	31.9
1-2 PM	3683	0.0	659	0.0	OFF	3683	0	659	0.00	0	48.7	48.7	48.7	31.5	31.5
2-3 PM	3744	0.0	671	0.0	OFF	3744	0	671	0.00	0	48.1	48.1	48.1	31.4	31.4
3-4 PM	3854	0.0	691	0.0	OFF	3854	0	691	0.00	0	47.0	47.0	47.0	31.2	31.2
4-5 PM	3552	0.0	636	0.0	OFF	3552	0	636	0.00	0	50.1	50.1	50.1	31.9	31.9
5-6 PM	3543	0.0	634	0.0	OFF	3543	0	634	0.00	0	50.2	50.2	50.2	31.9	31.9
6-7 PM	3330	0.0	596	0.0	OFF	3330	0	596	0.00	0	52.4	52.4	52.4	32.4	32.4
7-8 PM	2909	0.0	521	0.0	1499	2585	324	845	21.55	652	56.7	26.5	30.8	33.3	29.2
8-9 PM	2399	0.0	430	0.0	1499	1453	946	1376+	41.43	1102	61.9	18.3	30.8	34.4	22.7
9-10 PM	1698	0.0	305	0.0	1499	1051	648	952	30.71	815	63.2	22.5	30.8	36.0	27.9
10-11 PM	1032	0.0	185	0.0	1499	1005	27	212	13.47	363	64.5	35.6	34.3	37.4	37.1
11PM-MID	717	0.0	129	0.0	1500	717	0	129	0.70	6	65.0	62.4	42.7	38.1	38.1

"OFF" INDICATES NO ROAD WORK (ALL LANES OPEN TO TRAFFIC)

+ INDICATES DIVERSION FLOW EXCEEDS USER-SPECIFIED WARNING LIMIT

----- SITE BREAKDOWN DELAYS -----	
BREAKDOWN DURATION (MINS)	0
RANGE OF QUEUE DELAY - MIN	0.0
(VEH-H) MAX	0.0
RANGE OF DIVN DELAY - MIN	0.0
(VEH-H) MAX	0.0
AV BREAKDOWNS PER DAY	0.00
AV QUEUE DELAY/DAY (VEH-H)	0.0
AV DIVN DELAY/DAY (VEH-H)	0.0
AV TOTAL DELAY/DAY (VEH-H)	0.0

----- SITE ACCIDENT DELAYS -----	
ACCIDENT DURATION (MINS)	0
RANGE OF QUEUE DELAY - MIN	0.0
(VEH-H) MAX	0.0
RANGE OF DIVN DELAY - MIN	0.0
(VEH-H) MAX	0.0
AV ACCIDENTS PER DAY	0.00
AV QUEUE DELAY/DAY (VEH-H)	0.0
AV DIVN DELAY/DAY (VEH-H)	0.0
AV TOTAL DELAY/DAY (VEH-H)	0.0

AVERAGE ACCIDENT NUMBERS (PIA/DAY)	
MAIN ROUTE WITHOUT WORKS	0.1319
MAIN ROUTE WITH WORKS	0.1257
DIVERSION	0.2671

PIA: Personal Injury Accidents

IMPACTS ON ROAD USERS	
ROAD USER COSTS PER DAY (DOLLARS)	\$66,982
CONGESTED HOURS PER DAY*	3

*Delays Exceeding 15 Minutes

**IH 39/90: BELTLINE TO STH 73 (DANE COUNTY)
NIGHTTIME CLOSURE
DIVERSION ROUTE: STH 73 - USH 12**

AUGUST
Analyzed for 2009
Construction Season

GRAPHICAL REPRESENTATION OF TRAFFIC MODEL INPUT AND OUTPUT
SUNDAY EASTBOUND DIRECTION

