

<b>USH 151: CTH PD TO CTH PB (DANE COUNTY)</b> <b>NIGHTTIME CLOSURE</b> <b>NO DIVERSION ROUTE (MAX QUEUE METHOD)</b>	<b>OCTOBER</b>
	Analyzed for 2009 Construction Season

**SUMMARY OF TRAFFIC MODEL OUTPUT**

FRIDAY WESTBOUND DIRECTION

TIME OF DAY	FLOWS AND CAPACITY IN VEH/HR						AVERAGE SPEEDS IN MPH				
	MAIN ROUTE		SITE CAPA CITY	FLOW		AV.DEL PER VEH (MINS)	AVERAGE QUEUE (VEH)	MAIN ROUTE		SITE	
	DEMAND FLOW	PCT HEAVY		MAIN ROUTE	'DIVER TED'			WITHOUT WORK ZONE	WITH WORK ZONE		
MID-1 AM	95	0.0	1500	95	0	0.43	0	66.2	54.4	45.1	
1-2 AM	80	0.0	1500	80	0	0.43	0	66.3	54.5	45.1	
2-3 AM	78	0.0	1500	78	0	0.43	0	66.3	54.5	45.2	
3-4 AM	112	0.0	1500	112	0	0.43	0	66.2	54.3	45.0	
4-5 AM	271	0.0	1500	271	0	0.45	0	65.9	53.8	44.4	
5-6 AM	573	0.0	OFF	573	0	0.00	0	65.3	65.3	65.3	
6-7 AM	969	0.0	OFF	969	0	0.00	0	64.6	64.6	64.6	
7-8 AM	1054	0.0	OFF	1054	0	0.00	0	64.4	64.4	64.4	
8-9 AM	846	0.0	OFF	846	0	0.00	0	64.8	64.8	64.8	
9-10 AM	893	0.0	OFF	893	0	0.00	0	64.7	64.7	64.7	
10-11 AM	1039	0.0	OFF	1039	0	0.00	0	64.5	64.5	64.5	
11AM-NOON	1168	0.0	OFF	1168	0	0.00	0	64.2	64.2	64.2	
NOON-1PM	1261	0.0	OFF	1261	0	0.00	0	64.0	64.0	64.0	
1-2 PM	1612	0.0	OFF	1612	0	0.00	0	63.4	63.4	63.4	
2-3 PM	1753	0.0	OFF	1753	0	0.00	0	63.1	63.1	63.1	
3-4 PM	1873	0.0	OFF	1873	0	0.00	0	62.9	62.9	62.9	
4-5 PM	1769	0.0	OFF	1769	0	0.00	0	63.1	63.1	63.1	
5-6 PM	1407	0.0	OFF	1407	0	0.00	0	63.8	63.8	63.8	
6-7 PM	941	0.0	OFF	941	0	0.00	0	64.6	64.6	64.6	
7-8 PM	745	0.0	1500	745	0	0.49	0	65.0	52.3	42.6	
8-9 PM	698	0.0	1500	698	0	0.49	0	65.1	52.4	42.8	
9-10 PM	513	0.0	1500	513	0	0.47	0	65.5	53.0	43.5	
10-11 PM	344	0.0	1500	344	0	0.46	0	65.8	53.6	44.1	
11PM-MID	195	0.0	1500	195	0	0.44	0	66.0	54.1	44.7	

"OFF" INDICATES NO ROAD WORK (ALL LANES OPEN TO TRAFFIC)

*----- SITE BREAKDOWN DELAYS -----*	
BREAKDOWN DURATION (MINS)	0
RANGE OF QUEUE DELAY - MIN (VEH-H) MAX	0.0
AV BREAKDOWNS PER DAY	0.00
AV QUEUE DELAY/DAY (VEH-H)	0.0
AV TOTAL DELAY/DAY (VEH-H)	0.0

*----- SITE ACCIDENT DELAYS -----*	
BREAKDOWN DURATION (MINS)	0
RANGE OF QUEUE DELAY - MIN (VEH-H) MAX	0
AV BREAKDOWNS PER DAY	0
AV QUEUE DELAY/DAY (VEH-H)	0
AV TOTAL DELAY/DAY (VEH-H)	0

AVERAGE ACCIDENT NUMBERS (PIA/DAY)	
MAIN ROUTE WITHOUT WORKS	0.0071
MAIN ROUTE WITH WORKS	0.0069
'DIVERSION'	0.0000
<small>PIA: Personal Injury Accidents</small>	
IMPACTS ON ROAD USERS	
ROAD USER COSTS PER DAY	\$304
CONGESTED HOURS PER DAY*	0

\*Delays Exceeding User-Specified Maximum

**USH 151: CTH PD TO CTH PB (DANE COUNTY)  
NIGHTTIME CLOSURE  
NO DIVERSION ROUTE (MAX QUEUE METHOD)**

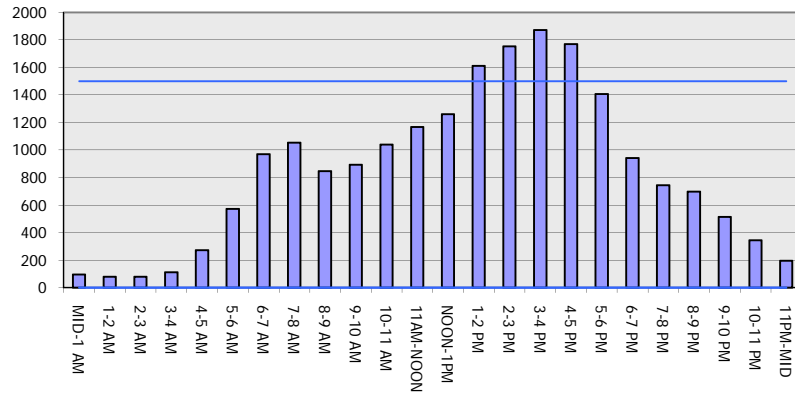
**OCTOBER**

Analyzed for 2009  
Construction Season

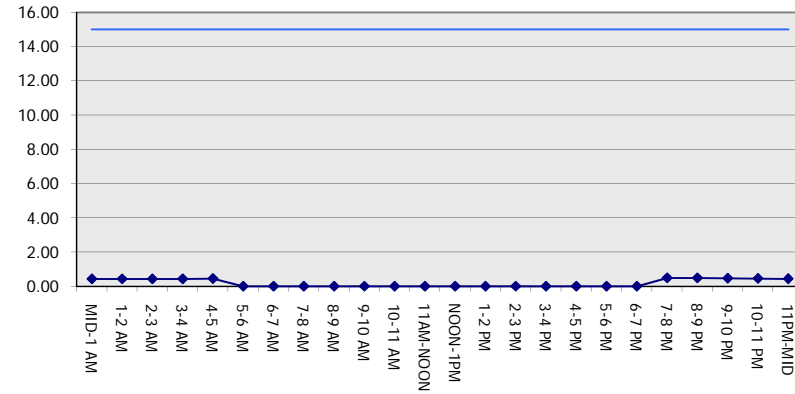
**GRAPHICAL REPRESENTATION OF TRAFFIC MODEL INPUT AND OUTPUT**

**FRIDAY WESTBOUND DIRECTION**

**Main Route - Traffic Demand (Vehicles Per Hour)**



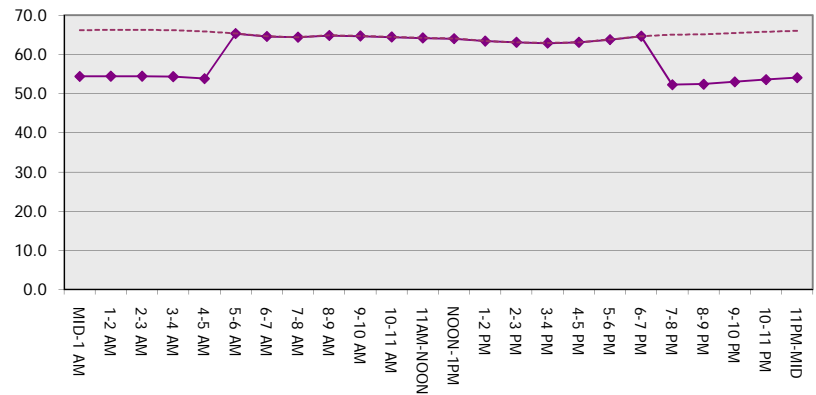
**Main Route Average Delay Per Vehicle (Minutes)**



**Main Route - Average Queue Length (Vehicles)**



**Main Route - Average Speed (MPH)**



<b>USH 151: CTH PD TO CTH PB (DANE COUNTY)                  NIGHTTIME CLOSURE                  NO DIVERSION ROUTE (MAX QUEUE METHOD)</b>	<b>OCTOBER</b>
	Analyzed for 2009 Construction Season

**SUMMARY OF TRAFFIC MODEL OUTPUT**

FRIDAY EASTBOUND DIRECTION

TIME OF DAY	FLOWS AND CAPACITY IN VEH/HR							AVERAGE SPEEDS IN MPH		
	MAIN ROUTE		SITE CAPA CITY	FLOW		AV.DEL PER VEH (MINS)	AVERAGE QUEUE (VEH)	MAIN ROUTE		SITE
	DEMAND FLOW	PCT HEAVY		MAIN ROUTE	'DIVER TED'			WITHOUT WORK ZONE	WITH WORK ZONE	
MID-1 AM	68	0.0	1500	68	0	0.43	0	66.3	54.5	45.2
1-2 AM	62	0.0	1500	62	0	0.43	0	66.3	54.5	45.3
2-3 AM	104	0.0	1500	104	0	0.43	0	66.2	54.4	45.1
3-4 AM	222	0.0	1500	222	0	0.44	0	66.0	54.0	44.6
4-5 AM	751	0.0	1500	751	0	0.50	0	65.0	52.2	42.5
5-6 AM	1538	0.0	OFF	1538	0	0.00	0	63.5	63.5	63.5
6-7 AM	1724	0.0	OFF	1724	0	0.00	0	63.2	63.2	63.2
7-8 AM	1473	0.0	OFF	1473	0	0.00	0	63.7	63.7	63.7
8-9 AM	1096	0.0	OFF	1096	0	0.00	0	64.3	64.3	64.3
9-10 AM	1065	0.0	OFF	1065	0	0.00	0	64.4	64.4	64.4
10-11 AM	1132	0.0	OFF	1132	0	0.00	0	64.3	64.3	64.3
11AM-NOON	1123	0.0	OFF	1123	0	0.00	0	64.3	64.3	64.3
NOON-1PM	1188	0.0	OFF	1188	0	0.00	0	64.1	64.1	64.1
1-2 PM	1224	0.0	OFF	1224	0	0.00	0	64.1	64.1	64.1
2-3 PM	1330	0.0	OFF	1330	0	0.00	0	63.9	63.9	63.9
3-4 PM	1343	0.0	OFF	1343	0	0.00	0	63.9	63.9	63.9
4-5 PM	1398	0.0	OFF	1398	0	0.00	0	63.8	63.8	63.8
5-6 PM	1126	0.0	OFF	1126	0	0.00	0	64.3	64.3	64.3
6-7 PM	715	0.0	OFF	715	0	0.00	0	65.1	65.1	65.1
7-8 PM	513	0.0	1500	513	0	0.47	0	65.5	53.0	43.5
8-9 PM	472	0.0	1500	472	0	0.47	0	65.5	53.2	43.6
9-10 PM	376	0.0	1500	376	0	0.46	0	65.7	53.5	44.0
10-11 PM	218	0.0	1500	218	0	0.44	0	66.0	54.0	44.6
11PM-MID	135	0.0	1500	135	0	0.44	0	66.1	54.3	45.0

"OFF" INDICATES NO ROAD WORK (ALL LANES OPEN TO TRAFFIC)

*----- SITE BREAKDOWN DELAYS -----*	
BREAKDOWN DURATION (MINS)	0
RANGE OF QUEUE DELAY - MIN (VEH-H) MAX	0.0
AV BREAKDOWNS PER DAY	0.00
AV QUEUE DELAY/DAY (VEH-H)	0.0
AV TOTAL DELAY/DAY (VEH-H)	0.0

*----- SITE ACCIDENT DELAYS -----*	
BREAKDOWN DURATION (MINS)	0
RANGE OF QUEUE DELAY - MIN (VEH-H) MAX	0
AV BREAKDOWNS PER DAY	0
AV QUEUE DELAY/DAY (VEH-H)	0
AV TOTAL DELAY/DAY (VEH-H)	0

AVERAGE ACCIDENT NUMBERS (PIA/DAY)	
MAIN ROUTE WITHOUT WORKS	0.0071
MAIN ROUTE WITH WORKS	0.0069
'DIVERSION'	0.0000

PIA: Personal Injury Accidents

ECONOMIC IMPACT ON ROAD USERS	
ROAD USER COSTS PER DAY	\$282
CONGESTED HOURS PER DAY*	0

\*Delays Exceeding User-Specified Maximum

**USH 151: CTH PD TO CTH PB (DANE COUNTY)  
NIGHTTIME CLOSURE  
NO DIVERSION ROUTE (MAX QUEUE METHOD)**

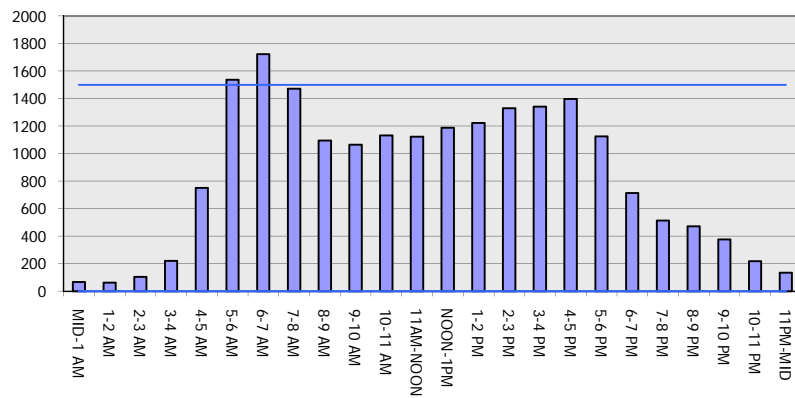
**OCTOBER**

Analyzed for 2009  
Construction Season

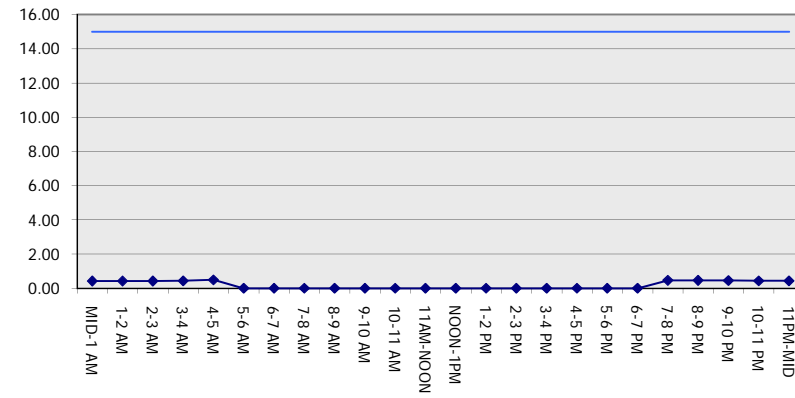
**GRAPHICAL REPRESENTATION OF TRAFFIC MODEL INPUT AND OUTPUT**

**FRIDAY EASTBOUND DIRECTION**

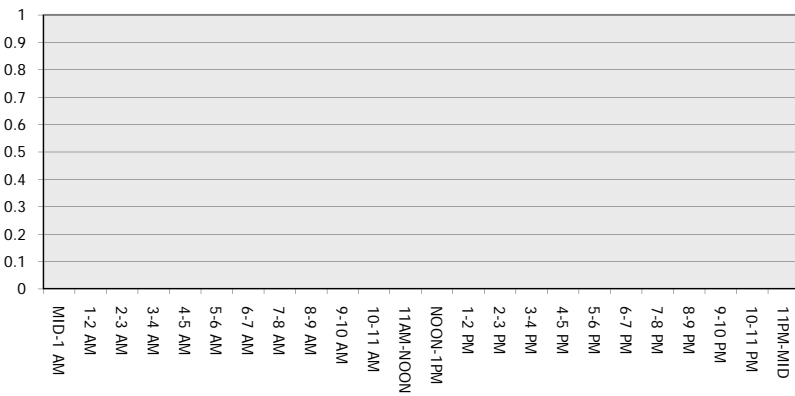
**Main Route - Traffic Demand (Vehicles Per Hour)**



**Main Route Average Delay Per Vehicle (Minutes)**



**Main Route - Average Queue Length (Vehicles)**



**Main Route - Average Speed (MPH)**

