

<b>IH 90: USH 14/61 TO USH 53</b> <b>OFF-PEAK DAY CLOSURE</b> <b>DIVERSION ROUTE: USH 53 TO USH 14/61</b>	<b>AUGUST</b>
	Analyzed for 2009 Construction Season

**SUMMARY OF TRAFFIC MODEL OUTPUT**

FRIDAY WESTBOUND DIRECTION

TIME OF DAY	FLOWS AND CAPACITY IN VEH/HR								AVERAGE SPEEDS IN MPH						
	MAIN ROUTE		ALTERNATE ROUTE		SITE CAPA CITY	FLOW MAIN ROUTE	FLOW DIVER -TING	TOTAL DIVN FLOW	AV.DEL PER VEH (MINS)	AVERAGE QUEUE (VEH)	MAIN ROUTE		ALTERNATE ROUTE		
	DEMAND FLOW	PCT HEAVY	NORMAL FLOW	PCT HEAVY							WITHOUT WORK ZN	WITH WORK ZN	SITE	WITHOUT WORK ZN	WITH WORK ZN
MID-1 AM	256	0.0	234	7.0	OFF	256	0	234	0.00	0	65.9	65.9	65.9	14.7	14.7
1-2 AM	194	0.0	177	7.0	OFF	194	0	177	0.00	0	66.0	66.0	66.0	16.6	16.6
2-3 AM	192	0.0	176	7.0	OFF	192	0	176	0.00	0	66.0	66.0	66.0	16.6	16.6
3-4 AM	184	0.0	169	7.0	OFF	184	0	169	0.00	0	66.0	66.0	66.0	16.8	16.8
4-5 AM	239	0.0	219	7.0	OFF	239	0	219	0.00	0	66.0	66.0	66.0	15.2	15.2
5-6 AM	355	0.0	324	7.0	OFF	355	0	324	0.00	0	65.7	65.7	65.7	11.8	11.8
6-7 AM	499	0.0	456	7.0	OFF	499	0	456	0.00	0	65.5	65.5	65.5	8.9	8.9
7-8 AM	725	0.0	664	7.0	OFF	725	0	664	0.00	0	65.0	65.0	65.0	7.3	7.3
8-9 AM	896	0.0	820	7.0	OFF	896	0	820+	0.00	0	64.7	64.7	64.7	6.1	6.1
9-10 AM	1141	0.0	1044	7.0	1500	1141	0	1044+	0.56	0	64.3	54.8	40.4	5.6	5.6
10-11 AM	1296	0.0	1185	7.0	1500	1296	0	1185+	0.76	0	64.0	51.9	35.6	5.6	5.6
11A-NOON	1391	0.0	1273	7.0	1500	1391	0	1273+	0.88	0	63.8	50.3	33.2	5.6	5.6
NOON-1PM	1454	0.0	1330	7.0	1499	1454	0	1330+	0.96	0	63.7	49.2	31.7	5.6	5.6
1-2 PM	1529	0.0	1398	7.0	1499	1529	0	1398+	1.30	7	63.5	45.6	30.8	5.6	5.6
2-3 PM	1664	0.0	1522	7.0	1500	1664	0	1522+	4.57	104	63.3	26.6	30.8	5.6	5.6
3-4 PM	1750	0.0	1601	7.0	1500	1750	0	1601+	12.24	314	63.1	13.5	30.8	5.6	5.6
4-5 PM	1782	0.0	1630	7.0	OFF	1782	0	1630+	0.71	44	63.1	52.0	52.0	5.6	5.6
5-6 PM	1523	0.0	1394	7.0	OFF	1523	0	1394+	0.00	0	63.5	63.5	63.5	5.6	5.6
6-7 PM	1305	0.0	1194	7.0	OFF	1305	0	1194+	0.00	0	64.0	64.0	64.0	5.6	5.6
7-8 PM	1234	0.0	1129	7.0	OFF	1234	0	1129+	0.00	0	64.1	64.1	64.1	5.6	5.6
8-9 PM	996	0.0	911	7.0	OFF	996	0	911+	0.00	0	64.5	64.5	64.5	5.6	5.6
9-10 PM	748	0.0	684	7.0	OFF	748	0	684	0.00	0	65.0	65.0	65.0	7.1	7.1
10-11 PM	537	0.0	491	7.0	OFF	537	0	491	0.00	0	65.4	65.4	65.4	8.6	8.6
11PM-MID	404	0.0	369	7.0	OFF	404	0	369	0.00	0	65.6	65.6	65.6	10.3	10.3

"OFF" INDICATES NO ROAD WORK (ALL LANES OPEN TO TRAFFIC)

+ INDICATES DIVERSION FLOW EXCEEDS USER-SPECIFIED WARNING LIMIT

*----- SITE BREAKDOWN DELAYS -----*	
BREAKDOWN DURATION (MINS)	0
RANGE OF QUEUE DELAY - MIN	0.0
(VEH-H) MAX	0.0
RANGE OF DIVN DELAY - MIN	0.0
(VEH-H) MAX	0.0
AV BREAKDOWNS PER DAY	0.00
AV QUEUE DELAY/DAY (VEH-H)	0.0
AV DIVN DELAY/DAY (VEH-H)	0.0
AV TOTAL DELAY/DAY (VEH-H)	0.0

*----- SITE ACCIDENT DELAYS -----*	
ACCIDENT DURATION (MINS)	0
RANGE OF QUEUE DELAY - MIN	0.0
(VEH-H) MAX	0.0
RANGE OF DIVN DELAY - MIN	0.0
(VEH-H) MAX	0.0
AV ACCIDENTS PER DAY	0.00
AV QUEUE DELAY/DAY (VEH-H)	0.0
AV DIVN DELAY/DAY (VEH-H)	0.0
AV TOTAL DELAY/DAY (VEH-H)	0.0

AVERAGE ACCIDENT NUMBERS (PIA/DAY)	
MAIN ROUTE WITHOUT WORKS	0.0124
MAIN ROUTE WITH WORKS	0.0117
DIVERSION	0.2255

PIA: Personal Injury Accidents

IMPACTS ON ROAD USERS	
ROAD USER COSTS PER DAY ( DOLLARS)	\$6,539
CONGESTED HOURS PER DAY*	0

\*Delays Exceeding 15 Minutes

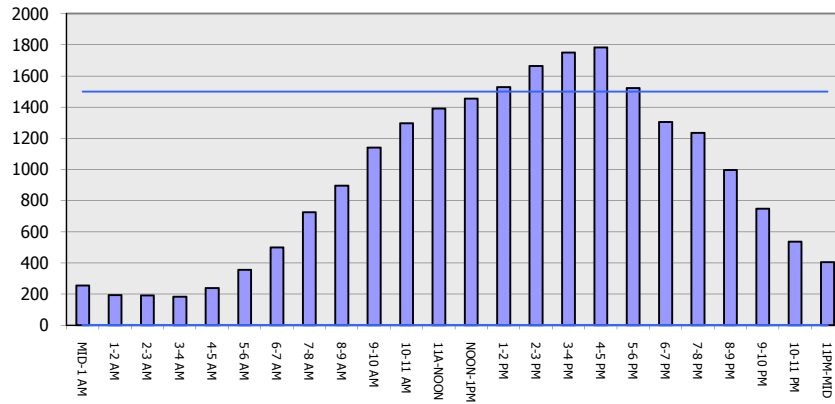
**IH 90: USH 14/61 TO USH 53  
OFF-PEAK DAY CLOSURE  
DIVERSION ROUTE: USH 53 TO USH 14/61**

**AUGUST**  
Analyzed for 2009  
Construction Season

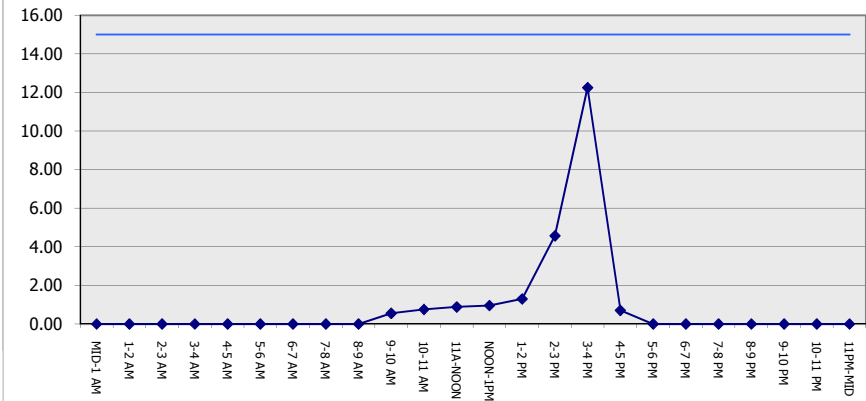
**GRAPHICAL REPRESENTATION OF TRAFFIC MODEL INPUT AND OUTPUT**

**FRIDAY WESTBOUND DIRECTION**

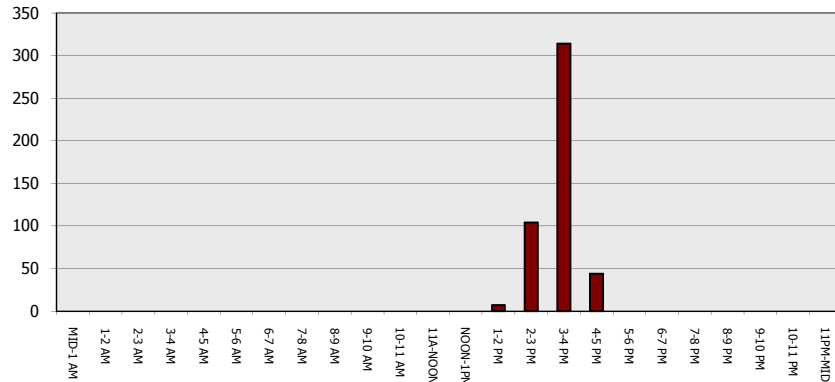
**Main Route - Traffic Demand (Vehicles Per Hour)**



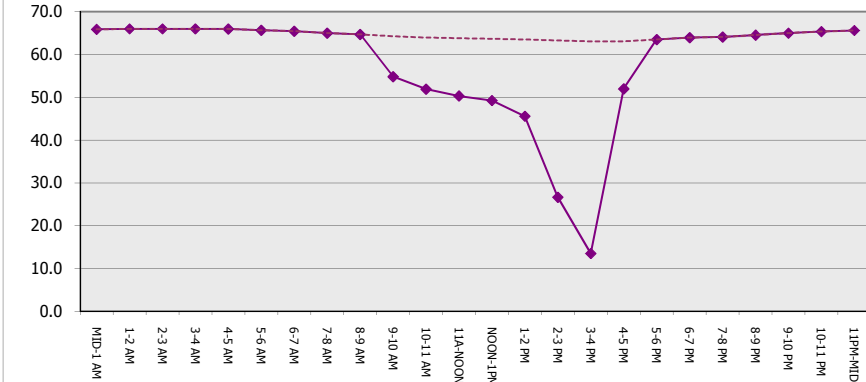
**Main Route Average Delay Per Vehicle (Minutes)**



**Main Route - Average Queue Length (Vehicles)**



**Main Route - Average Speed (MPH)**



<b>IH 90: USH 14/61 TO USH 53</b> <b>OFF-PEAK DAY CLOSURE</b> <b>DIVERSION ROUTE: USH 53 TO USH 14/61</b>	<b>AUGUST</b>
	Analyzed for 2009 Construction Season

**SUMMARY OF TRAFFIC MODEL OUTPUT**

FRIDAY EASTBOUND DIRECTION

TIME OF DAY	FLOWS AND CAPACITY IN VEH/HR								TOTAL DIVN FLOW	AV.DEL PER VEH (MINS)	AVERAGE QUEUE (VEH)	AVERAGE SPEEDS IN MPH				
	MAIN		DIVERSION		SITE CAPA CITY	FLOW MAIN ROUTE	FLOW DIVER -TING	MAIN ROUTE				SITE	ALTERNATE ROUTE			
	DEMAND FLOW	PCT HEAVY	NORMAL FLOW	PCT HEAVY				WITHOUT WORK ZN					WITH WORK ZN	WITHOUT WORK ZN	WITH WORK ZN	
MID-1 AM	198	0.0	181	7.0	OFF	198	0	181	0.00	0	66.0	66.0	66.0	16.5	16.5	
1-2 AM	150	0.0	137	7.0	OFF	150	0	137	0.00	0	66.1	66.1	66.1	17.9	17.9	
2-3 AM	178	0.0	162	7.0	OFF	178	0	162	0.00	0	66.1	66.1	66.1	17.1	17.1	
3-4 AM	215	0.0	197	7.0	OFF	215	0	197	0.00	0	66.0	66.0	66.0	16.0	16.0	
4-5 AM	241	0.0	221	7.0	OFF	241	0	221	0.00	0	66.0	66.0	66.0	15.2	15.2	
5-6 AM	389	0.0	356	7.0	OFF	389	0	356	0.00	0	65.6	65.6	65.6	10.7	10.7	
6-7 AM	612	0.0	560	7.0	OFF	612	0	560	0.00	0	65.3	65.3	65.3	8.1	8.1	
7-8 AM	821	0.0	750	7.0	OFF	821	0	750+	0.00	0	64.8	64.8	64.8	6.6	6.6	
8-9 AM	917	0.0	839	7.0	OFF	917	0	839+	0.00	0	64.6	64.6	64.6	5.9	5.9	
9-10 AM	1132	0.0	1036	7.0	1500	1132	0	1036+	0.55	0	64.3	55.0	40.7	5.6	5.6	
10-11 AM	1313	0.0	1201	7.0	1500	1313	0	1201+	0.78	0	64.0	51.6	35.1	5.6	5.6	
11A-NOON	1419	0.0	1298	7.0	1499	1419	0	1298+	0.92	0	63.7	49.8	32.5	5.6	5.6	
NOON-1PM	1473	0.0	1347	7.0	1499	1473	0	1347+	1.00	0	63.7	48.9	31.4	5.6	5.6	
1-2 PM	1650	0.0	1509	7.0	1500	1650	0	1509+	3.20	66	63.3	32.2	30.8	5.6	5.6	
2-3 PM	1753	0.0	1603	7.0	1500	1753	0	1603+	10.67	273	63.1	15.0	30.8	5.6	5.6	
3-4 PM	1777	0.0	1626	7.0	1500	1777	0	1626+	20.92	542	63.1	9.6	30.8	5.6	5.8	
4-5 PM	1739	0.0	1590	7.0	OFF	1739	0	1590+	1.62	102	63.2	42.5	42.5	5.6	5.6	
5-6 PM	1654	0.0	1514	7.0	OFF	1654	0	1514+	0.00	0	63.3	63.3	63.3	5.6	5.6	
6-7 PM	1425	0.0	1304	7.0	OFF	1425	0	1304+	0.00	0	63.7	63.7	63.7	5.6	5.6	
7-8 PM	1091	0.0	998	7.0	OFF	1091	0	998+	0.00	0	64.3	64.3	64.3	5.6	5.6	
8-9 PM	845	0.0	773	7.0	OFF	845	0	773+	0.00	0	64.8	64.8	64.8	6.4	6.4	
9-10 PM	631	0.0	577	7.0	OFF	631	0	577	0.00	0	65.2	65.2	65.2	7.9	7.9	
10-11 PM	489	0.0	448	7.0	OFF	489	0	448	0.00	0	65.5	65.5	65.5	8.9	8.9	
11PM-MID	328	0.0	299	7.0	OFF	328	0	299	0.00	0	65.8	65.8	65.8	12.6	12.6	

"OFF" INDICATES NO ROAD WORK (ALL LANES OPEN TO TRAFFIC)

+ INDICATES DIVERSION FLOW EXCEEDS USER-SPECIFIED WARNING LIMIT

*----- SITE BREAKDOWN DELAYS -----*	
BREAKDOWN DURATION (MINS)	0
RANGE OF QUEUE DELAY - MIN	0.0
(VEH-H) MAX	0.0
RANGE OF DIVN DELAY - MIN	0.0
(VEH-H) MAX	0.0
AV BREAKDOWNS PER DAY	0.00
AV QUEUE DELAY/DAY (VEH-H)	0.0
AV DIVN DELAY/DAY (VEH-H)	0.0
AV TOTAL DELAY/DAY (VEH-H)	0.0

*----- SITE ACCIDENT DELAYS -----*	
ACCIDENT DURATION (MINS)	0
RANGE OF QUEUE DELAY - MIN	0.0
(VEH-H) MAX	0.0
RANGE OF DIVN DELAY - MIN	0.0
(VEH-H) MAX	0.0
AV ACCIDENTS PER DAY	0.00
AV QUEUE DELAY/DAY (VEH-H)	0.0
AV DIVN DELAY/DAY (VEH-H)	0.0
AV TOTAL DELAY/DAY (VEH-H)	0.0

AVERAGE ACCIDENT NUMBERS (PIA/DAY)	
MAIN ROUTE WITHOUT WORKS	0.0125
MAIN ROUTE WITH WORKS	0.0118
DIVERSION	0.2270

PIA: Personal Injury Accidents

IMPACTS ON ROAD USERS	
ROAD USER COSTS PER DAY ( DOLLARS)	\$12,247
CONGESTED HOURS PER DAY*	1

\*Delays Exceeding 15 Minutes

**IH 90: USH 14/61 TO USH 53**  
**OFF-PEAK DAY CLOSURE**  
**DIVERSION ROUTE: USH 53 TO USH 14/61**

**AUGUST**  
 Analyzed for 2009  
 Construction Season

**GRAPHICAL REPRESENTATION OF TRAFFIC MODEL INPUT AND OUTPUT**  
**FRIDAY EASTBOUND DIRECTION**

