

USH 12/14: USH 14 TO OLD SAUK RD (DANE COUNTY) OFF-PEAK DAY CLOSURE NO DIVERSION ROUTE (MAX QUEUE METHOD)	OCTOBER
	Analyzed for 2009 Construction Season

SUMMARY OF TRAFFIC MODEL OUTPUT

MON-THUR WESTBOUND DIRECTION

TIME OF DAY	FLOWS AND CAPACITY IN VEH/HR						AVERAGE SPEEDS IN MPH				
	MAIN ROUTE		SITE CAPA CITY	FLOW		AV.DEL PER VEH (MINS)	AVERAGE QUEUE (VEH)	MAIN ROUTE		SITE	
	DEMAND FLOW	PCT HEAVY		MAIN ROUTE	'DIVER TED'			WITHOUT WORK ZONE	WITH WORK ZONE		
MID-1 AM	96	0.0	OFF	96	0	0.00	0	60.2	60.2	60.2	
1-2 AM	62	0.0	OFF	62	0	0.00	0	60.2	60.2	60.2	
2-3 AM	49	0.0	OFF	49	0	0.00	0	60.2	60.2	60.2	
3-4 AM	64	0.0	OFF	64	0	0.00	0	60.2	60.2	60.2	
4-5 AM	153	0.0	OFF	153	0	0.00	0	60.2	60.2	60.2	
5-6 AM	426	0.0	OFF	426	0	0.00	0	60.2	60.2	60.2	
6-7 AM	1190	0.0	OFF	1190	0	0.00	0	60.2	60.2	60.2	
7-8 AM	2060	0.0	OFF	2060	0	0.00	0	60.2	60.2	60.2	
8-9 AM	1560	0.0	OFF	1560	0	0.00	0	60.2	60.2	60.2	
9-10 AM	1186	0.0	OFF	1186	0	0.00	0	60.2	60.2	60.2	
10-11 AM	1226	0.0	1499	1226	0	0.61	0	60.2	43.6	37.7	
11AM-NOON	1482	0.0	1499	1482	0	1.04	3	60.2	36.4	31.4	
NOON-1PM	1583	0.0	1500	1583	0	2.76	52	60.2	22.0	30.8	
1-2 PM	1574	0.0	1499	1574	0	5.55	125	60.2	14.1	30.8	
2-3 PM	1836	0.0	1500	1823	14	12.12+	314	60.2	9.5	30.8	
3-4 PM	2285	0.0	OFF	2285	0	1.12	70	60.2	35.3	35.3	
4-5 PM	3051	0.0	OFF	3051	0	0.00	0	55.3	55.3	55.3	
5-6 PM	2954	0.0	OFF	2954	0	0.00	0	56.3	56.3	56.3	
6-7 PM	1799	0.0	OFF	1799	0	0.00	0	60.2	60.2	60.2	
7-8 PM	1183	0.0	OFF	1183	0	0.00	0	60.2	60.2	60.2	
8-9 PM	893	0.0	OFF	893	0	0.00	0	60.2	60.2	60.2	
9-10 PM	691	0.0	OFF	691	0	0.00	0	60.2	60.2	60.2	
10-11 PM	376	0.0	OFF	376	0	0.00	0	60.2	60.2	60.2	
11PM-MID	208	0.0	OFF	208	0	0.00	0	60.2	60.2	60.2	

"OFF" INDICATES NO ROAD WORK (ALL LANES OPEN TO TRAFFIC)

+ INDICATES QUEUEING EXCEEDS USER-SPECIFIED MAXIMUM LIMIT

----- SITE BREAKDOWN DELAYS -----	
BREAKDOWN DURATION (MINS)	0
RANGE OF QUEUE DELAY - MIN (VEH-H) MAX	0.0
AV BREAKDOWNS PER DAY	0.00
AV QUEUE DELAY/DAY (VEH-H)	0.0
AV TOTAL DELAY/DAY (VEH-H)	0.0

----- SITE ACCIDENT DELAYS -----	
BREAKDOWN DURATION (MINS)	0
RANGE OF QUEUE DELAY - MIN (VEH-H) MAX	0
AV BREAKDOWNS PER DAY	0
AV QUEUE DELAY/DAY (VEH-H)	0
AV TOTAL DELAY/DAY (VEH-H)	0

AVERAGE ACCIDENT NUMBERS (PIA/DAY)	
MAIN ROUTE WITHOUT WORKS	0.0071
MAIN ROUTE WITH WORKS	0.0066
'DIVERSION'	0.0000
<small>PIA: Personal Injury Accidents</small>	
IMPACTS ON ROAD USERS	
ROAD USER COSTS PER DAY	\$7,645
CONGESTED HOURS PER DAY*	1

*Delays Exceeding User-Specified Maximum

**USH 12/14: USH 14 TO OLD SAUK RD (DANE COUNTY)
OFF-PEAK DAY CLOSURE
NO DIVERSION ROUTE (MAX QUEUE METHOD)**

OCTOBER

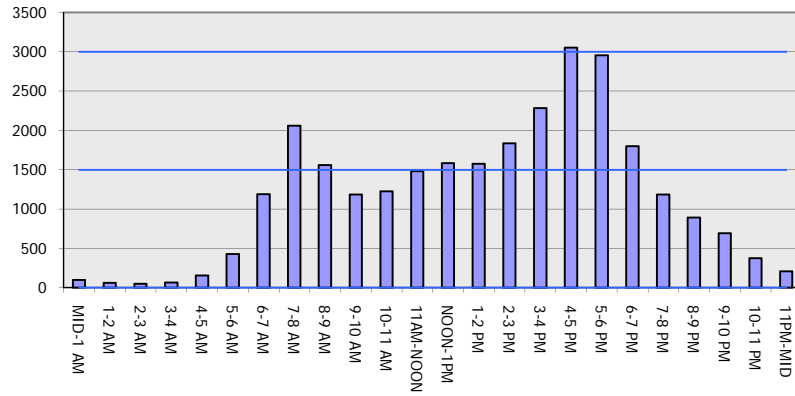
Analyzed for 2009
Construction Season

GRAPHICAL REPRESENTATION OF TRAFFIC MODEL INPUT AND OUTPUT

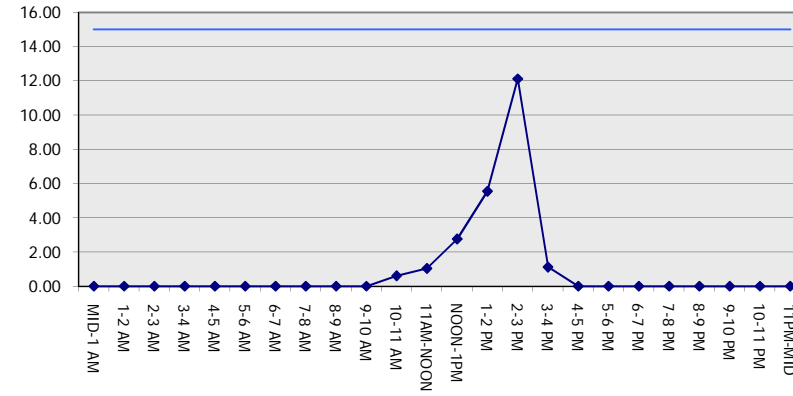
MON-THUR

WESTBOUND DIRECTION

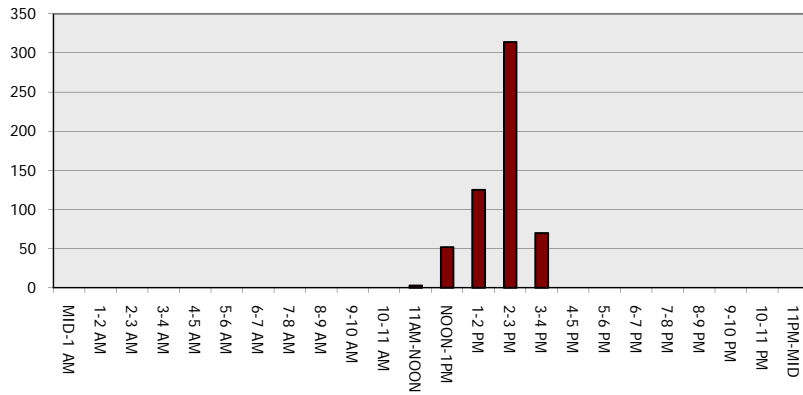
Main Route - Traffic Demand (Vehicles Per Hour)



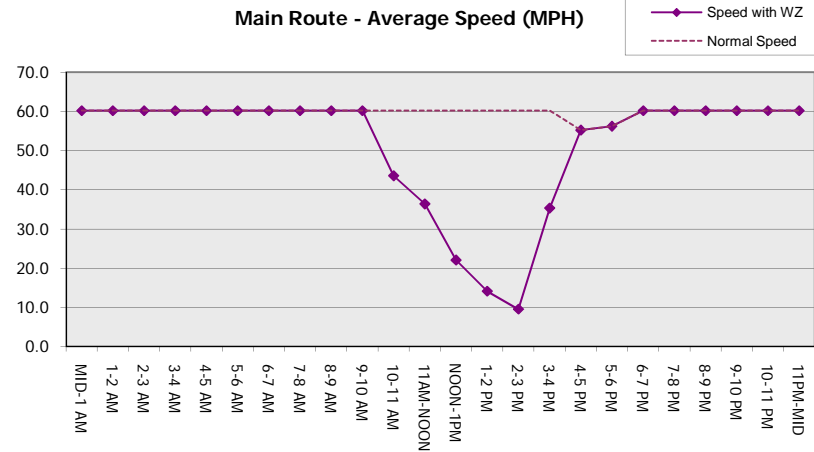
Main Route Average Delay Per Vehicle (Minutes)



Main Route - Average Queue Length (Vehicles)



Main Route - Average Speed (MPH)



USH 12/14: USH 14 TO OLD SAUK RD (DANE COUNTY) OFF-PEAK DAY CLOSURE NO DIVERSION ROUTE (MAX QUEUE METHOD)	OCTOBER
	Analyzed for 2009 Construction Season

SUMMARY OF TRAFFIC MODEL OUTPUT

MON-THUR EASTBOUND DIRECTION

TIME OF DAY	FLOWS AND CAPACITY IN VEH/HR							AVERAGE SPEEDS IN MPH		
	MAIN ROUTE		SITE CAPA CITY	FLOW		AV.DEL PER VEH (MINS)	AVERAGE QUEUE (VEH)	MAIN ROUTE		SITE
	DEMAND FLOW	PCT HEAVY		MAIN ROUTE	'DIVER TED'			WITHOUT WORK ZONE	WITH WORK ZONE	
MID-1 AM	113	0.0	OFF	113	0	0.00	0	60.2	60.2	60.2
1-2 AM	77	0.0	OFF	77	0	0.00	0	60.2	60.2	60.2
2-3 AM	63	0.0	OFF	63	0	0.00	0	60.2	60.2	60.2
3-4 AM	82	0.0	OFF	82	0	0.00	0	60.2	60.2	60.2
4-5 AM	165	0.0	OFF	165	0	0.00	0	60.2	60.2	60.2
5-6 AM	558	0.0	OFF	558	0	0.00	0	60.2	60.2	60.2
6-7 AM	1687	0.0	OFF	1687	0	0.00	0	60.2	60.2	60.2
7-8 AM	3040	0.0	OFF	3040	0	0.00	0	55.3	55.3	55.3
8-9 AM	2450	0.0	OFF	2450	0	0.00	0	60.2	60.2	60.2
9-10 AM	1479	0.0	OFF	1479	0	0.00	0	60.2	60.2	60.2
10-11 AM	1402	0.0	1499	1402	0	0.84	0	60.2	39.4	32.9
11AM-NOON	1533	0.0	1499	1533	0	1.31	10	60.2	33.0	30.8
NOON-1PM	1602	0.0	1500	1602	0	3.92	84	60.2	17.6	30.8
1-2 PM	1513	0.0	1499	1513	0	6.16	140	60.2	13.2	30.8
2-3 PM	1610	0.0	1500	1610	0	7.72	185	60.2	11.8	30.8
3-4 PM	2064	0.0	OFF	2064	0	0.26	17	60.2	51.9	51.9
4-5 PM	2208	0.0	OFF	2208	0	0.00	0	60.2	60.2	60.2
5-6 PM	2042	0.0	OFF	2042	0	0.00	0	60.2	60.2	60.2
6-7 PM	1488	0.0	OFF	1488	0	0.00	0	60.2	60.2	60.2
7-8 PM	1038	0.0	OFF	1038	0	0.00	0	60.2	60.2	60.2
8-9 PM	786	0.0	OFF	786	0	0.00	0	60.2	60.2	60.2
9-10 PM	635	0.0	OFF	635	0	0.00	0	60.2	60.2	60.2
10-11 PM	400	0.0	OFF	400	0	0.00	0	60.2	60.2	60.2
11PM-MID	258	0.0	OFF	258	0	0.00	0	60.2	60.2	60.2

"OFF" INDICATES NO ROAD WORK (ALL LANES OPEN TO TRAFFIC)

----- SITE BREAKDOWN DELAYS -----	
BREAKDOWN DURATION (MINS)	0
RANGE OF QUEUE DELAY - MIN (VEH-H) MAX	0.0
AV BREAKDOWNS PER DAY	0.00
AV QUEUE DELAY/DAY (VEH-H)	0.0
AV TOTAL DELAY/DAY (VEH-H)	0.0

----- SITE ACCIDENT DELAYS -----	
BREAKDOWN DURATION (MINS)	0
RANGE OF QUEUE DELAY - MIN (VEH-H) MAX	0
AV BREAKDOWNS PER DAY	0
AV QUEUE DELAY/DAY (VEH-H)	0
AV TOTAL DELAY/DAY (VEH-H)	0

AVERAGE ACCIDENT NUMBERS (PIA/DAY)	
MAIN ROUTE WITHOUT WORKS	0.0072
MAIN ROUTE WITH WORKS	0.0067
'DIVERSION'	0.0000

PIA: Personal Injury Accidents

ECONOMIC IMPACT ON ROAD USERS	
ROAD USER COSTS PER DAY	\$6,037
CONGESTED HOURS PER DAY*	0

*Delays Exceeding User-Specified Maximum

**USH 12/14: USH 14 TO OLD SAUK RD (DANE COUNTY)
OFF-PEAK DAY CLOSURE
NO DIVERSION ROUTE (MAX QUEUE METHOD)**

OCTOBER

Analyzed for 2009
Construction Season

GRAPHICAL REPRESENTATION OF TRAFFIC MODEL INPUT AND OUTPUT

MON-THUR EASTBOUND DIRECTION

