

**USH 12/14: USH 14 TO OLD SAUK RD (DANE COUNTY)
OFF-PEAK DAY CLOSURE
NO DIVERSION ROUTE (MAX QUEUE METHOD)**

OCTOBER
Analyzed for 2009
Construction Season

SUMMARY OF TRAFFIC MODEL OUTPUT
FRIDAY WESTBOUND DIRECTION

TIME OF DAY	FLOWS AND CAPACITY IN VEH/HR						AVERAGE SPEEDS IN MPH				
	MAIN ROUTE		SITE CAPA CITY	FLOW		AV.DEL PER VEH (MINS)	AVERAGE QUEUE (VEH)	MAIN ROUTE		SITE	
	DEMAND FLOW	PCT HEAVY		MAIN ROUTE	'DIVER TED'			WITHOUT WORK ZONE	WITH WORK ZONE		
MID-1 AM	125	0.0	OFF	125	0	0.00	0	60.2	60.2	60.2	
1-2 AM	94	0.0	OFF	94	0	0.00	0	60.2	60.2	60.2	
2-3 AM	68	0.0	OFF	68	0	0.00	0	60.2	60.2	60.2	
3-4 AM	79	0.0	OFF	79	0	0.00	0	60.2	60.2	60.2	
4-5 AM	148	0.0	OFF	148	0	0.00	0	60.2	60.2	60.2	
5-6 AM	410	0.0	OFF	410	0	0.00	0	60.2	60.2	60.2	
6-7 AM	1144	0.0	OFF	1144	0	0.00	0	60.2	60.2	60.2	
7-8 AM	1955	0.0	OFF	1955	0	0.00	0	60.2	60.2	60.2	
8-9 AM	1535	0.0	OFF	1535	0	0.00	0	60.2	60.2	60.2	
9-10 AM	1308	0.0	OFF	1308	0	0.00	0	60.2	60.2	60.2	
10-11 AM	1450	0.0	1499	1450	0	0.93	0	60.2	38.0	32.0	
11AM-NOON	1763	0.0	1500	1763	0	4.66	120	60.2	16.3	30.8	
NOON-1PM	1918	0.0	1500	1695	222	15.67+	401	60.2	8.4	30.8	
1-2 PM	1927	0.0	1499	1494	432	17.08+	436	60.2	8.1	30.8	
2-3 PM	2184	0.0	1499	1496	688	17.12+	437	60.2	8.1	30.8	
3-4 PM	2584	0.0	OFF	2584	0	1.22	72	60.1	34.0	34.0	
4-5 PM	3131	0.0	OFF	3131	0	0.00	0	54.4	54.4	54.4	
5-6 PM	2938	0.0	OFF	2938	0	0.00	0	56.4	56.4	56.4	
6-7 PM	1903	0.0	OFF	1903	0	0.00	0	60.2	60.2	60.2	
7-8 PM	1332	0.0	OFF	1332	0	0.00	0	60.2	60.2	60.2	
8-9 PM	1052	0.0	OFF	1052	0	0.00	0	60.2	60.2	60.2	
9-10 PM	908	0.0	OFF	908	0	0.00	0	60.2	60.2	60.2	
10-11 PM	640	0.0	OFF	640	0	0.00	0	60.2	60.2	60.2	
11PM-MID	423	0.0	OFF	423	0	0.00	0	60.2	60.2	60.2	

"OFF" INDICATES NO ROAD WORK (ALL LANES OPEN TO TRAFFIC)

+ INDICATES QUEUEING EXCEEDS USER-SPECIFIED MAXIMUM LIMIT

----- SITE BREAKDOWN DELAYS -----	
BREAKDOWN DURATION (MINS)	0
RANGE OF QUEUE DELAY - MIN (VEH-H) MAX	0.0
AV BREAKDOWNS PER DAY	0.00
AV QUEUE DELAY/DAY (VEH-H)	0.0
AV TOTAL DELAY/DAY (VEH-H)	0.0

----- SITE ACCIDENT DELAYS -----	
BREAKDOWN DURATION (MINS)	0
RANGE OF QUEUE DELAY - MIN (VEH-H) MAX	0
AV BREAKDOWNS PER DAY	0
AV QUEUE DELAY/DAY (VEH-H)	0
AV TOTAL DELAY/DAY (VEH-H)	0

AVERAGE ACCIDENT NUMBERS (PIA/DAY)	
MAIN ROUTE WITHOUT WORKS	0.0079
MAIN ROUTE WITH WORKS	0.0070
'DIVERSION'	0.0008
PIA: Personal Injury Accidents	
IMPACTS ON ROAD USERS	
ROAD USER COSTS PER DAY	\$24,281
CONGESTED HOURS PER DAY*	3

*Delays Exceeding User-Specified Maximum

**USH 12/14: USH 14 TO OLD SAUK RD (DANE COUNTY)
OFF-PEAK DAY CLOSURE
NO DIVERSION ROUTE (MAX QUEUE METHOD)**

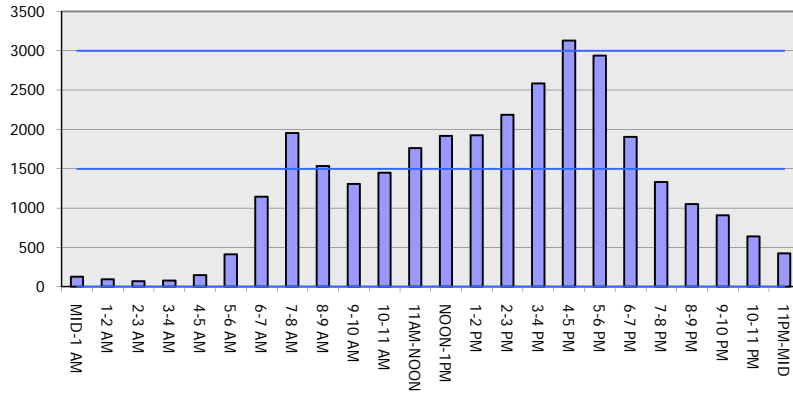
OCTOBER

Analyzed for 2009
Construction Season

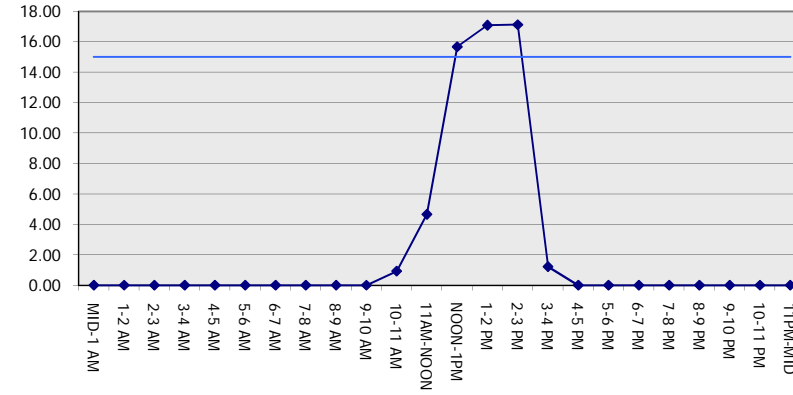
GRAPHICAL REPRESENTATION OF TRAFFIC MODEL INPUT AND OUTPUT

FRIDAY WESTBOUND DIRECTION

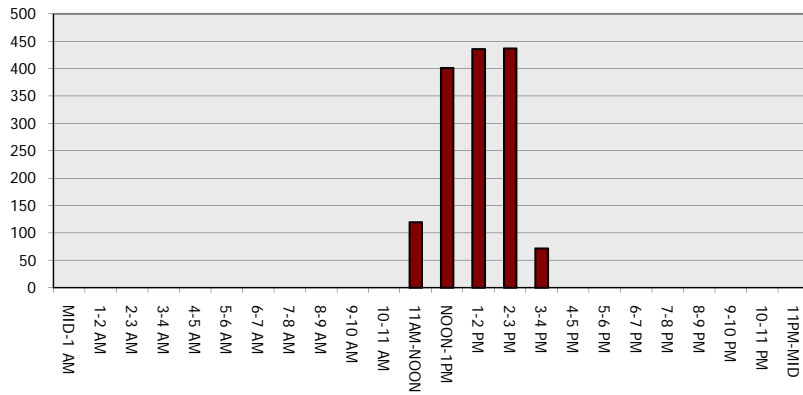
Main Route - Traffic Demand (Vehicles Per Hour)



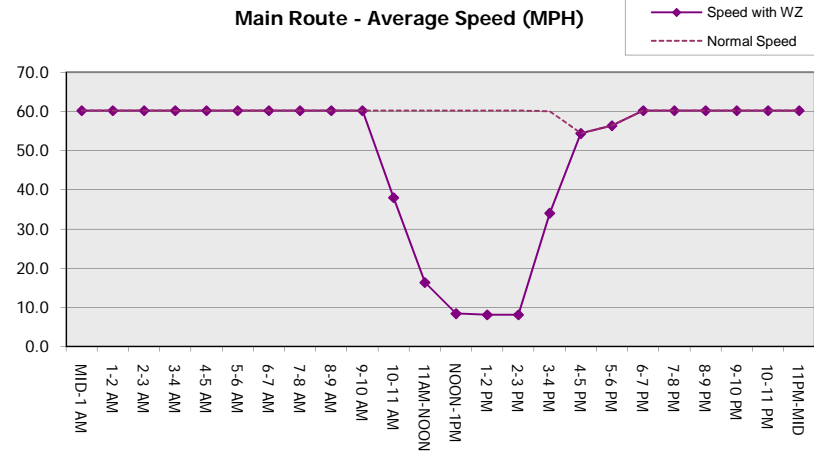
Main Route Average Delay Per Vehicle (Minutes)



Main Route - Average Queue Length (Vehicles)



Main Route - Average Speed (MPH)



USH 12/14: USH 14 TO OLD SAUK RD (DANE COUNTY) OFF-PEAK DAY CLOSURE NO DIVERSION ROUTE (MAX QUEUE METHOD)	OCTOBER
	Analyzed for 2009 Construction Season

SUMMARY OF TRAFFIC MODEL OUTPUT

FRIDAY EASTBOUND DIRECTION

TIME OF DAY	FLOWS AND CAPACITY IN VEH/HR						AVERAGE SPEEDS IN MPH			
	MAIN ROUTE		SITE CAPA CITY	FLOW		AV.DEL PER VEH (MINS)	AVERAGE QUEUE (VEH)	MAIN ROUTE		SITE
	DEMAND FLOW	PCT HEAVY		MAIN ROUTE	'DIVER TED'			WITHOUT WORK ZONE	WITH WORK ZONE	
MID-1 AM	165	0.0	OFF	165	0	0.00	0	60.2	60.2	60.2
1-2 AM	104	0.0	OFF	104	0	0.00	0	60.2	60.2	60.2
2-3 AM	78	0.0	OFF	78	0	0.00	0	60.2	60.2	60.2
3-4 AM	81	0.0	OFF	81	0	0.00	0	60.2	60.2	60.2
4-5 AM	167	0.0	OFF	167	0	0.00	0	60.2	60.2	60.2
5-6 AM	524	0.0	OFF	524	0	0.00	0	60.2	60.2	60.2
6-7 AM	1592	0.0	OFF	1592	0	0.00	0	60.2	60.2	60.2
7-8 AM	2755	0.0	OFF	2755	0	0.00	0	58.3	58.3	58.3
8-9 AM	2281	0.0	OFF	2281	0	0.00	0	60.2	60.2	60.2
9-10 AM	1582	0.0	OFF	1582	0	0.00	0	60.2	60.2	60.2
10-11 AM	1604	0.0	1499	1604	0	2.46	46	60.2	23.7	30.8
11AM-NOON	1759	0.0	1500	1759	0	8.89	225	60.2	11.1	30.8
NOON-1PM	1854	0.0	1499	1566	288	16.78+	428	60.2	8.1	30.8
1-2 PM	1864	0.0	1500	1502	363	17.07+	436	60.2	8.1	30.8
2-3 PM	1801	0.0	1500	1501	300	17.07+	436	60.2	8.1	30.8
3-4 PM	2174	0.0	OFF	2174	0	0.78	50	60.2	40.5	40.5
4-5 PM	2179	0.0	OFF	2179	0	0.00	0	60.2	60.2	60.2
5-6 PM	2059	0.0	OFF	2059	0	0.00	0	60.2	60.2	60.2
6-7 PM	1666	0.0	OFF	1666	0	0.00	0	60.2	60.2	60.2
7-8 PM	1192	0.0	OFF	1192	0	0.00	0	60.2	60.2	60.2
8-9 PM	857	0.0	OFF	857	0	0.00	0	60.2	60.2	60.2
9-10 PM	772	0.0	OFF	772	0	0.00	0	60.2	60.2	60.2
10-11 PM	581	0.0	OFF	581	0	0.00	0	60.2	60.2	60.2
11PM-MID	423	0.0	OFF	423	0	0.00	0	60.2	60.2	60.2

"OFF" INDICATES NO ROAD WORK (ALL LANES OPEN TO TRAFFIC)

+ INDICATES QUEUEING EXCEEDS USER-SPECIFIED MAXIMUM LIMIT

----- SITE BREAKDOWN DELAYS -----	
BREAKDOWN DURATION (MINS)	0
RANGE OF QUEUE DELAY - MIN	0.0
(VEH-H) MAX	0.0
AV BREAKDOWNS PER DAY	0.00
AV QUEUE DELAY/DAY (VEH-H)	0.0
AV TOTAL DELAY/DAY (VEH-H)	0.0

----- SITE ACCIDENT DELAYS -----	
BREAKDOWN DURATION (MINS)	0
RANGE OF QUEUE DELAY - MIN	0
(VEH-H) MAX	0
AV BREAKDOWNS PER DAY	0
AV QUEUE DELAY/DAY (VEH-H)	0
AV TOTAL DELAY/DAY (VEH-H)	0

AVERAGE ACCIDENT NUMBERS (PIA/DAY)	
MAIN ROUTE WITHOUT WORKS	0.0077
MAIN ROUTE WITH WORKS	0.0069
'DIVERSION'	0.0006

PIA: Personal Injury Accidents

ECONOMIC IMPACT ON ROAD USERS	
ROAD USER COSTS PER DAY	\$24,683
CONGESTED HOURS PER DAY*	3

*Delays Exceeding User-Specified Maximum

**USH 12/14: USH 14 TO OLD SAUK RD (DANE COUNTY)
OFF-PEAK DAY CLOSURE
NO DIVERSION ROUTE (MAX QUEUE METHOD)**

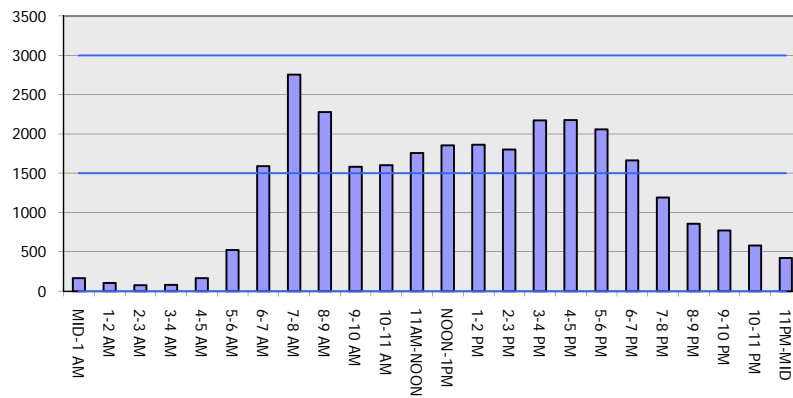
OCTOBER

Analyzed for 2009
Construction Season

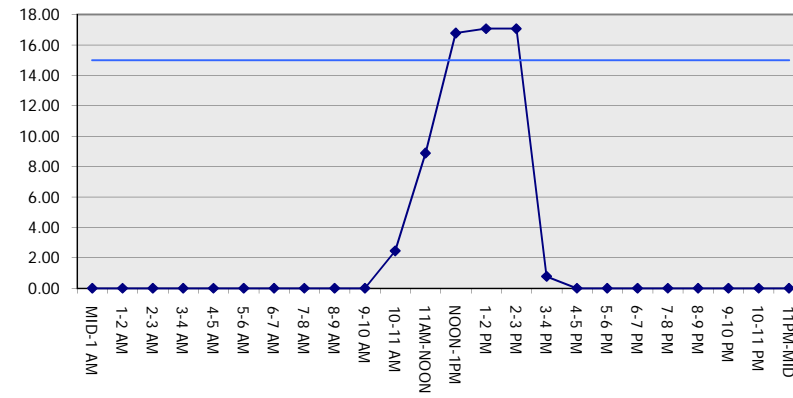
GRAPHICAL REPRESENTATION OF TRAFFIC MODEL INPUT AND OUTPUT

FRIDAY EASTBOUND DIRECTION

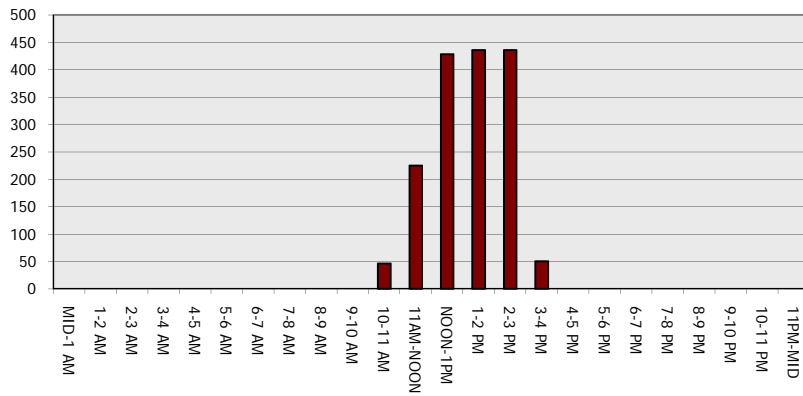
Main Route - Traffic Demand (Vehicles Per Hour)



Main Route Average Delay Per Vehicle (Minutes)



Main Route - Average Queue Length (Vehicles)



Main Route - Average Speed (MPH)

