

USH 151: IH 39 TO STH 19 (DANE COUNTY) OFF-PEAK DAY 2 LANE CLOSURE NO DIVERSION ROUTE (MAX QUEUE SEGMENT)	OCTOBER
	Analyzed for 2009 Construction Season

SUMMARY OF TRAFFIC MODEL OUTPUT

SUNDAY SOUTHBOUND DIRECTION

TIME OF DAY	FLOWS AND CAPACITY IN VEH/HR						AVERAGE SPEEDS IN MPH				
	MAIN ROUTE		SITE CAPA CITY	FLOW		AV.DEL PER VEH (MINS)	AVERAGE QUEUE (VEH)	MAIN ROUTE		SITE	
	DEMAND FLOW	PCT HEAVY		MAIN ROUTE	'DIVER TED'			WITHOUT WORK ZONE	WITH WORK ZONE		
MID-1 AM	202	0.0	OFF	202	0	0.00	0	70.2	70.2	70.2	
1-2 AM	225	0.0	OFF	225	0	0.00	0	70.2	70.2	70.2	
2-3 AM	162	0.0	OFF	162	0	0.00	0	70.2	70.2	70.2	
3-4 AM	205	0.0	OFF	205	0	0.00	0	70.2	70.2	70.2	
4-5 AM	171	0.0	OFF	171	0	0.00	0	70.2	70.2	70.2	
5-6 AM	168	0.0	OFF	168	0	0.00	0	70.2	70.2	70.2	
6-7 AM	204	0.0	OFF	204	0	0.00	0	70.2	70.2	70.2	
7-8 AM	282	0.0	OFF	282	0	0.00	0	70.2	70.2	70.2	
8-9 AM	375	0.0	OFF	375	0	0.00	0	70.2	70.2	70.2	
9-10 AM	541	0.0	1500	541	0	0.54	0	70.0	61.8	43.3	
10-11 AM	710	0.0	1500	710	0	0.56	0	69.9	61.4	42.7	
11AM-NOON	818	0.0	1500	818	0	0.57	0	69.7	61.1	42.4	
NOON-1PM	804	0.0	1500	804	0	0.57	0	69.7	61.2	42.4	
1-2 PM	772	0.0	1500	772	0	0.56	0	69.8	61.2	42.5	
2-3 PM	739	0.0	1500	739	0	0.56	0	69.8	61.3	42.6	
3-4 PM	801	0.0	1500	801	0	0.57	0	69.7	61.2	42.4	
4-5 PM	803	0.0	1500	803	0	0.57	0	69.7	61.2	42.4	
5-6 PM	776	0.0	1500	776	0	0.56	0	69.7	61.2	42.5	
6-7 PM	692	0.0	1500	692	0	0.55	0	69.9	61.4	42.8	
7-8 PM	503	0.0	OFF	503	0	0.00	0	70.1	70.1	70.1	
8-9 PM	533	0.0	OFF	533	0	0.00	0	70.0	70.0	70.0	
9-10 PM	501	0.0	OFF	501	0	0.00	0	70.1	70.1	70.1	
10-11 PM	330	0.0	OFF	330	0	0.00	0	70.2	70.2	70.2	
11PM-MID	298	0.0	OFF	298	0	0.00	0	70.2	70.2	70.2	

"OFF" INDICATES NO ROAD WORK (ALL LANES OPEN TO TRAFFIC)

----- SITE BREAKDOWN DELAYS -----	
BREAKDOWN DURATION (MINS)	0
RANGE OF QUEUE DELAY - MIN (VEH-H) MAX	0.0
AV BREAKDOWNS PER DAY	0.00
AV QUEUE DELAY/DAY (VEH-H)	0.0
AV TOTAL DELAY/DAY (VEH-H)	0.0

----- SITE ACCIDENT DELAYS -----	
BREAKDOWN DURATION (MINS)	0
RANGE OF QUEUE DELAY - MIN (VEH-H) MAX	0
AV BREAKDOWNS PER DAY	0
AV QUEUE DELAY/DAY (VEH-H)	0
AV TOTAL DELAY/DAY (VEH-H)	0

AVERAGE ACCIDENT NUMBERS (PIA/DAY)	
MAIN ROUTE WITHOUT WORKS	0.0087
MAIN ROUTE WITH WORKS	0.0082
'DIVERSION'	0.0000
<small>PIA: Personal Injury Accidents</small>	
IMPACTS ON ROAD USERS	
ROAD USER COSTS PER DAY	\$1,144
CONGESTED HOURS PER DAY*	0

*Delays Exceeding User-Specified Maximum

**USH 151: IH 39 TO STH 19 (DANE COUNTY)
OFF-PEAK DAY 2 LANE CLOSURE
NO DIVERSION ROUTE (MAX QUEUE SEGMENT)**

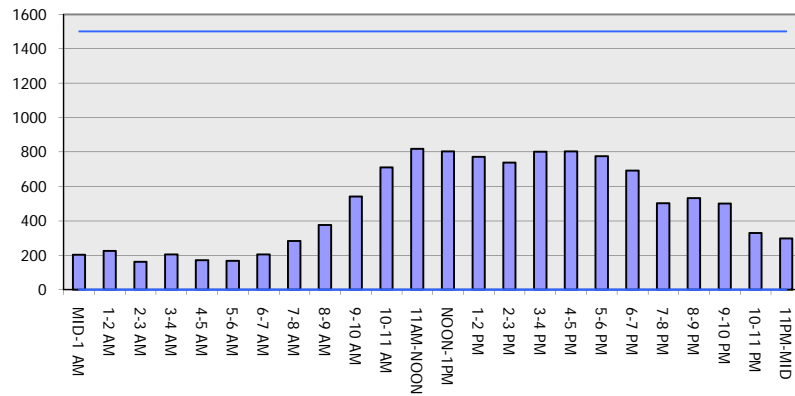
OCTOBER

Analyzed for 2009
Construction Season

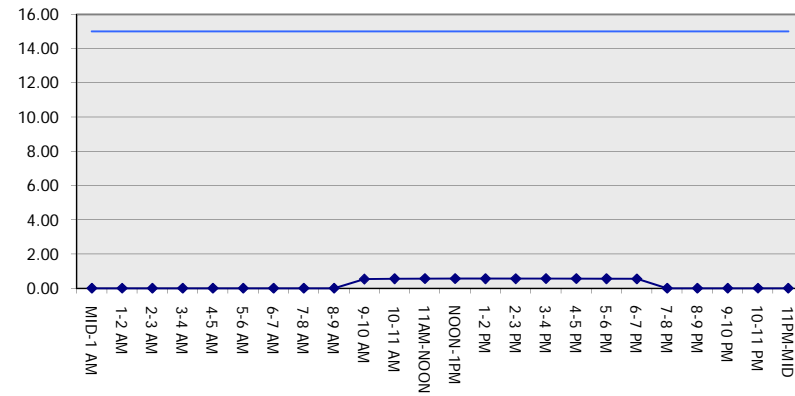
GRAPHICAL REPRESENTATION OF TRAFFIC MODEL INPUT AND OUTPUT

SUNDAY SOUTHBOUND DIRECTION

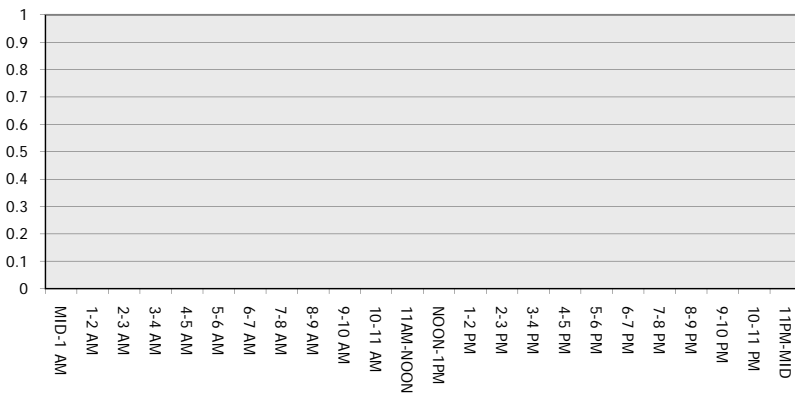
Main Route - Traffic Demand (Vehicles Per Hour)



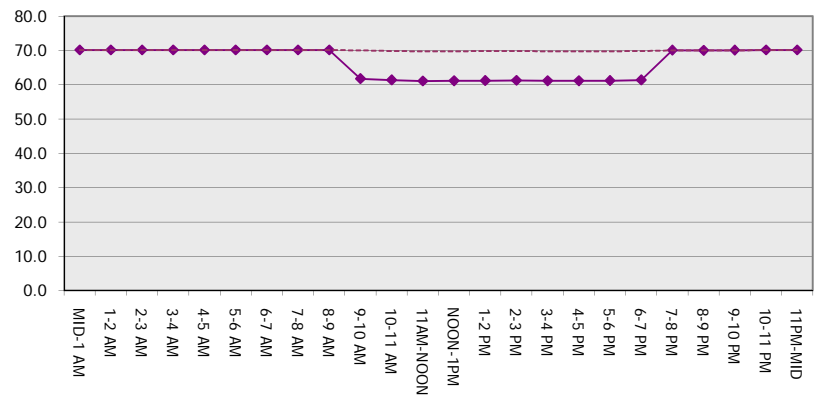
Main Route Average Delay Per Vehicle (Minutes)



Main Route - Average Queue Length (Vehicles)



Main Route - Average Speed (MPH)



USH 151: IH 39 TO STH 19 (DANE COUNTY) OFF-PEAK DAY 2 LANE CLOSURE NO DIVERSION ROUTE (MAX QUEUE SEGMENT)	OCTOBER
	Analyzed for 2009 Construction Season

SUMMARY OF TRAFFIC MODEL OUTPUT

SUNDAY NORTHBOUND DIRECTION

TIME OF DAY	FLOWS AND CAPACITY IN VEH/HR							AVERAGE SPEEDS IN MPH			
	MAIN ROUTE		SITE CAPA CITY	FLOW		AV.DEL PER VEH (MINS)	AVERAGE QUEUE (VEH)	MAIN ROUTE		SITE	
	DEMAND FLOW	PCT HEAVY		MAIN ROUTE	'DIVER TED'			WITHOUT WORK ZONE	WITH WORK ZONE		
MID-1 AM	395	0.0	OFF	395	0	0.00	0	70.2	70.2	70.2	
1-2 AM	289	0.0	OFF	289	0	0.00	0	70.2	70.2	70.2	
2-3 AM	263	0.0	OFF	263	0	0.00	0	70.2	70.2	70.2	
3-4 AM	172	0.0	OFF	172	0	0.00	0	70.2	70.2	70.2	
4-5 AM	133	0.0	OFF	133	0	0.00	0	70.2	70.2	70.2	
5-6 AM	131	0.0	OFF	131	0	0.00	0	70.2	70.2	70.2	
6-7 AM	214	0.0	OFF	214	0	0.00	0	70.2	70.2	70.2	
7-8 AM	414	0.0	OFF	414	0	0.00	0	70.2	70.2	70.2	
8-9 AM	559	0.0	OFF	559	0	0.00	0	70.0	70.0	70.0	
9-10 AM	831	0.0	1500	831	0	0.57	0	69.7	61.1	42.3	
10-11 AM	1185	0.0	1499	1185	0	0.69	0	69.2	59.2	38.9	
11AM-NOON	1490	0.0	1499	1490	0	1.24	5	68.9	52.8	31.4	
NOON-1PM	1596	0.0	1500	1596	0	3.41	63	68.7	37.5	30.8	
1-2 PM	1638	0.0	1500	1638	0	7.92	183	68.7	23.4	30.8	
2-3 PM	1657	0.0	1500	1657	0	13.67+	333	68.7	15.8	30.8	
3-4 PM	1612	0.0	1499	1500	112	16.37+	399	68.7	13.8	30.8	
4-5 PM	1720	0.0	1500	1500	220	16.36+	400	68.6	13.8	30.8	
5-6 PM	1646	0.0	1500	1500	146	16.37+	400	68.7	13.8	30.8	
6-7 PM	1413	0.0	1499	1396	17	15.17+	369	69.0	14.7	30.8	
7-8 PM	1112	0.0	OFF	1112	0	0.12	9	69.4	67.4	67.4	
8-9 PM	822	0.0	OFF	822	0	0.00	0	69.7	69.7	69.7	
9-10 PM	642	0.0	OFF	642	0	0.00	0	69.9	69.9	69.9	
10-11 PM	448	0.0	OFF	448	0	0.00	0	70.2	70.2	70.2	
11PM-MID	285	0.0	OFF	285	0	0.00	0	70.2	70.2	70.2	

"OFF" INDICATES NO ROAD WORK (ALL LANES OPEN TO TRAFFIC)

+ INDICATES QUEUEING EXCEEDS USER-SPECIFIED MAXIMUM LIMIT

----- SITE BREAKDOWN DELAYS -----	
BREAKDOWN DURATION (MINS)	0
RANGE OF QUEUE DELAY - MIN	0.0
(VEH-H) MAX	0.0
AV BREAKDOWNS PER DAY	0.00
AV QUEUE DELAY/DAY (VEH-H)	0.0
AV TOTAL DELAY/DAY (VEH-H)	0.0

----- SITE ACCIDENT DELAYS -----	
BREAKDOWN DURATION (MINS)	0
RANGE OF QUEUE DELAY - MIN	0
(VEH-H) MAX	0
AV BREAKDOWNS PER DAY	0
AV QUEUE DELAY/DAY (VEH-H)	0
AV TOTAL DELAY/DAY (VEH-H)	0

AVERAGE ACCIDENT NUMBERS (PIA/DAY)	
MAIN ROUTE WITHOUT WORKS	0.0154
MAIN ROUTE WITH WORKS	0.0141
'DIVERSION'	0.0009

PIA: Personal Injury Accidents

ECONOMIC IMPACT ON ROAD USERS	
ROAD USER COSTS PER DAY	\$40,205
CONGESTED HOURS PER DAY*	5

*Delays Exceeding User-Specified Maximum

**USH 151: IH 39 TO STH 19 (DANE COUNTY)
OFF-PEAK DAY 2 LANE CLOSURE
NO DIVERSION ROUTE (MAX QUEUE SEGMENT)**

OCTOBER

Analyzed for 2009
Construction Season

GRAPHICAL REPRESENTATION OF TRAFFIC MODEL INPUT AND OUTPUT
SUNDAY NORTHBOUND DIRECTION

