

USH 151: IH 39 TO STH 19 (DANE COUNTY) OFF-PEAK DAY 2 LANE CLOSURE NO DIVERSION ROUTE (MAX QUEUE SEGMENT)	OCTOBER
	Analyzed for 2009 Construction Season

SUMMARY OF TRAFFIC MODEL OUTPUT

SATURDAY SOUTHBOUND DIRECTION

TIME OF DAY	FLOWS AND CAPACITY IN VEH/HR						AVERAGE SPEEDS IN MPH			
	MAIN ROUTE		SITE CAPA CITY	FLOW		AV.DEL PER VEH (MINS)	AVERAGE QUEUE (VEH)	MAIN ROUTE		SITE
	DEMAND FLOW	PCT HEAVY		MAIN ROUTE	'DIVER TED'			WITHOUT WORK ZONE	WITH WORK ZONE	
MID-1 AM	249	0.0	OFF	249	0	0.00	0	70.2	70.2	70.2
1-2 AM	209	0.0	OFF	209	0	0.00	0	70.2	70.2	70.2
2-3 AM	234	0.0	OFF	234	0	0.00	0	70.2	70.2	70.2
3-4 AM	194	0.0	OFF	194	0	0.00	0	70.2	70.2	70.2
4-5 AM	234	0.0	OFF	234	0	0.00	0	70.2	70.2	70.2
5-6 AM	275	0.0	OFF	275	0	0.00	0	70.2	70.2	70.2
6-7 AM	358	0.0	OFF	358	0	0.00	0	70.2	70.2	70.2
7-8 AM	615	0.0	OFF	615	0	0.00	0	70.0	70.0	70.0
8-9 AM	798	0.0	1500	798	0	0.57	0	69.7	61.2	42.4
9-10 AM	1181	0.0	1500	1181	0	0.68	0	69.2	59.3	39.1
10-11 AM	1466	0.0	1500	1466	0	1.05	0	68.9	54.8	31.5
11AM-NOON	1443	0.0	1500	1443	0	1.02	0	68.9	55.1	32.0
NOON-1PM	1280	0.0	1500	1280	0	0.81	0	69.1	57.7	36.1
1-2 PM	1164	0.0	1500	1164	0	0.66	0	69.3	59.6	39.6
2-3 PM	1002	0.0	1500	1002	0	0.59	0	69.5	60.7	41.7
3-4 PM	945	0.0	1500	945	0	0.58	0	69.6	60.9	41.9
4-5 PM	929	0.0	1500	929	0	0.58	0	69.6	60.9	41.9
5-6 PM	877	0.0	1500	877	0	0.57	0	69.6	61.0	42.1
6-7 PM	947	0.0	OFF	947	0	0.00	0	69.6	69.6	69.6
7-8 PM	705	0.0	OFF	705	0	0.00	0	69.9	69.9	69.9
8-9 PM	594	0.0	OFF	594	0	0.00	0	70.0	70.0	70.0
9-10 PM	554	0.0	OFF	554	0	0.00	0	70.0	70.0	70.0
10-11 PM	467	0.0	OFF	467	0	0.00	0	70.2	70.2	70.2
11PM-MID	311	0.0	OFF	311	0	0.00	0	70.2	70.2	70.2

"OFF" INDICATES NO ROAD WORK (ALL LANES OPEN TO TRAFFIC)

----- SITE BREAKDOWN DELAYS -----	
BREAKDOWN DURATION (MINS)	0
RANGE OF QUEUE DELAY - MIN (VEH-H) MAX	0.0
AV BREAKDOWNS PER DAY	0.00
AV QUEUE DELAY/DAY (VEH-H)	0.0
AV TOTAL DELAY/DAY (VEH-H)	0.0

----- SITE ACCIDENT DELAYS -----	
BREAKDOWN DURATION (MINS)	0
RANGE OF QUEUE DELAY - MIN (VEH-H) MAX	0
AV BREAKDOWNS PER DAY	0
AV QUEUE DELAY/DAY (VEH-H)	0
AV TOTAL DELAY/DAY (VEH-H)	0

AVERAGE ACCIDENT NUMBERS (PIA/DAY)	
MAIN ROUTE WITHOUT WORKS	0.0127
MAIN ROUTE WITH WORKS	0.0120
'DIVERSION'	0.0000
PIA: Personal Injury Accidents	
IMPACTS ON ROAD USERS	
ROAD USER COSTS PER DAY	\$2,225
CONGESTED HOURS PER DAY*	0

*Delays Exceeding User-Specified Maximum

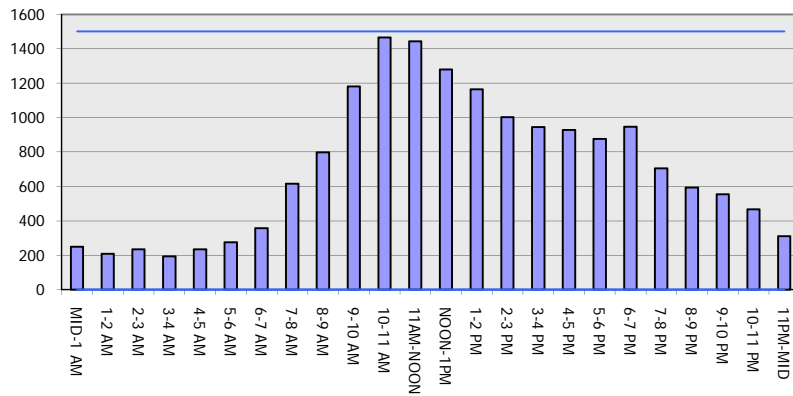
**USH 151: IH 39 TO STH 19 (DANE COUNTY)
OFF-PEAK DAY 2 LANE CLOSURE
NO DIVERSION ROUTE (MAX QUEUE SEGMENT)**

OCTOBER

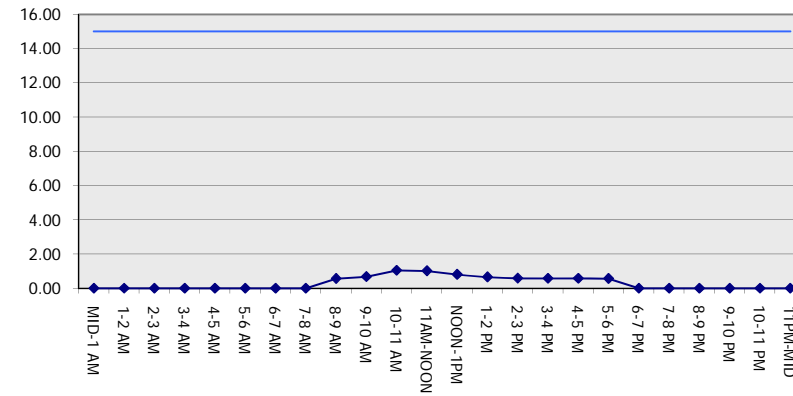
Analyzed for 2009
Construction Season

GRAPHICAL REPRESENTATION OF TRAFFIC MODEL INPUT AND OUTPUT
SATURDAY SOUTHBOUND DIRECTION

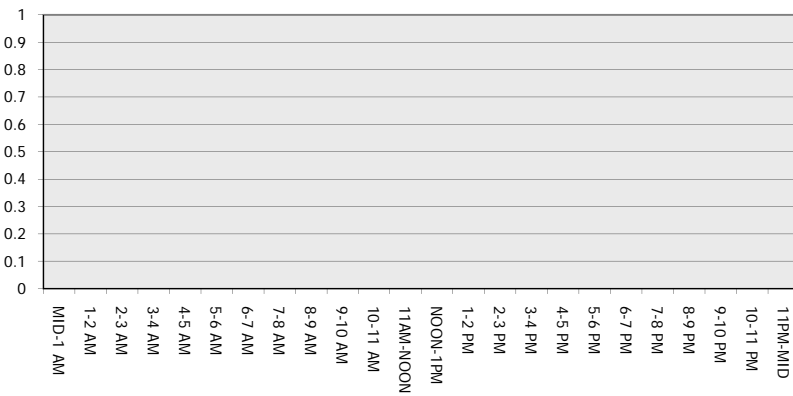
Main Route - Traffic Demand (Vehicles Per Hour)



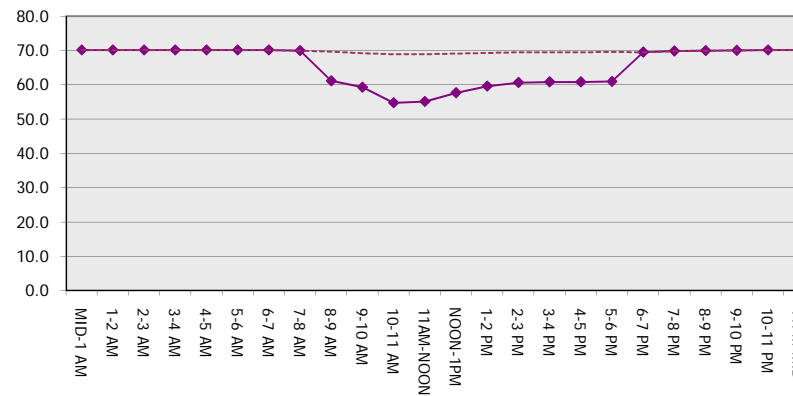
Main Route Average Delay Per Vehicle (Minutes)



Main Route - Average Queue Length (Vehicles)



Main Route - Average Speed (MPH)



USH 151: IH 39 TO STH 19 (DANE COUNTY) OFF-PEAK DAY 2 LANE CLOSURE NO DIVERSION ROUTE (MAX QUEUE SEGMENT)	OCTOBER
	Analyzed for 2009 Construction Season

SUMMARY OF TRAFFIC MODEL OUTPUT

SATURDAY NORTHBOUND DIRECTION

TIME OF DAY	FLOWS AND CAPACITY IN VEH/HR							AVERAGE SPEEDS IN MPH		
	MAIN ROUTE		SITE CAPA CITY	FLOW		AV.DEL PER VEH (MINS)	AVERAGE QUEUE (VEH)	MAIN ROUTE		SITE
	DEMAND FLOW	PCT HEAVY		MAIN ROUTE	'DIVER TED'			WITHOUT WORK ZONE	WITH WORK ZONE	
MID-1 AM	359	0.0	OFF	359	0	0.00	0	70.2	70.2	70.2
1-2 AM	238	0.0	OFF	238	0	0.00	0	70.2	70.2	70.2
2-3 AM	224	0.0	OFF	224	0	0.00	0	70.2	70.2	70.2
3-4 AM	137	0.0	OFF	137	0	0.00	0	70.2	70.2	70.2
4-5 AM	107	0.0	OFF	107	0	0.00	0	70.2	70.2	70.2
5-6 AM	157	0.0	OFF	157	0	0.00	0	70.2	70.2	70.2
6-7 AM	268	0.0	OFF	268	0	0.00	0	70.2	70.2	70.2
7-8 AM	501	0.0	OFF	501	0	0.00	0	70.1	70.1	70.1
8-9 AM	720	0.0	1500	720	0	0.56	0	69.9	61.4	42.7
9-10 AM	1003	0.0	1500	1003	0	0.59	0	69.5	60.7	41.7
10-11 AM	1343	0.0	1499	1343	0	0.89	0	69.1	56.7	34.5
11AM-NOON	1628	0.0	1499	1628	0	2.85	51	68.7	40.6	30.8
NOON-1PM	1742	0.0	1500	1742	0	10.06	246	68.6	19.9	30.8
1-2 PM	1715	0.0	1499	1512	203	16.31+	398	68.6	13.8	30.8
2-3 PM	1870	0.0	1500	1500	370	16.35+	400	68.4	13.8	30.8
3-4 PM	2070	0.0	1500	1500	570	16.33+	400	68.2	13.8	30.8
4-5 PM	2157	0.0	1500	1500	657	16.33+	400	68.1	13.8	30.8
5-6 PM	1973	0.0	1500	1500	473	16.34+	400	68.3	13.8	30.8
6-7 PM	1640	0.0	OFF	1640	0	0.20	16	68.7	65.6	65.6
7-8 PM	1361	0.0	OFF	1361	0	0.00	0	69.1	69.1	69.1
8-9 PM	1238	0.0	OFF	1238	0	0.00	0	69.2	69.2	69.2
9-10 PM	1086	0.0	OFF	1086	0	0.00	0	69.4	69.4	69.4
10-11 PM	781	0.0	OFF	781	0	0.00	0	69.7	69.7	69.7
11PM-MID	600	0.0	OFF	600	0	0.00	0	70.0	70.0	70.0

"OFF" INDICATES NO ROAD WORK (ALL LANES OPEN TO TRAFFIC)

+ INDICATES QUEUEING EXCEEDS USER-SPECIFIED MAXIMUM LIMIT

----- SITE BREAKDOWN DELAYS -----	
BREAKDOWN DURATION (MINS)	0
RANGE OF QUEUE DELAY - MIN (VEH-H) MAX	0.0
AV BREAKDOWNS PER DAY	0.00
AV QUEUE DELAY/DAY (VEH-H)	0.0
AV TOTAL DELAY/DAY (VEH-H)	0.0

----- SITE ACCIDENT DELAYS -----	
BREAKDOWN DURATION (MINS)	0
RANGE OF QUEUE DELAY - MIN (VEH-H) MAX	0
AV BREAKDOWNS PER DAY	0
AV QUEUE DELAY/DAY (VEH-H)	0
AV TOTAL DELAY/DAY (VEH-H)	0

AVERAGE ACCIDENT NUMBERS (PIA/DAY)	
MAIN ROUTE WITHOUT WORKS	0.0186
MAIN ROUTE WITH WORKS	0.0160
'DIVERSION'	0.0039

PIA: Personal Injury Accidents

ECONOMIC IMPACT ON ROAD USERS	
ROAD USER COSTS PER DAY	\$49,747
CONGESTED HOURS PER DAY*	5

*Delays Exceeding User-Specified Maximum

**USH 151: IH 39 TO STH 19 (DANE COUNTY)
 OFF-PEAK DAY 2 LANE CLOSURE
 NO DIVERSION ROUTE (MAX QUEUE SEGMENT)**

OCTOBER

Analyzed for 2009
 Construction Season

GRAPHICAL REPRESENTATION OF TRAFFIC MODEL INPUT AND OUTPUT
SATURDAY NORTHBOUND DIRECTION

