

USH 151: IH 39 TO STH 19 (DANE COUNTY) OFF-PEAK DAY 2 LANE CLOSURE NO DIVERSION ROUTE (MAX QUEUE SEGMENT)	OCTOBER
	Analyzed for 2009 Construction Season

SUMMARY OF TRAFFIC MODEL OUTPUT

MON-THUR SOUTHBOUND DIRECTION

TIME OF DAY	FLOWS AND CAPACITY IN VEH/HR						AVERAGE SPEEDS IN MPH				
	MAIN ROUTE		SITE CAPA CITY	FLOW		AV.DEL PER VEH (MINS)	AVERAGE QUEUE (VEH)	MAIN ROUTE		SITE	
	DEMAND FLOW	PCT HEAVY		MAIN ROUTE	'DIVER TED'			WITHOUT WORK ZONE	WITH WORK ZONE		
MID-1 AM	162	0.0	OFF	162	0	0.00	0	70.2	70.2	70.2	
1-2 AM	226	0.0	OFF	226	0	0.00	0	70.2	70.2	70.2	
2-3 AM	200	0.0	OFF	200	0	0.00	0	70.2	70.2	70.2	
3-4 AM	217	0.0	OFF	217	0	0.00	0	70.2	70.2	70.2	
4-5 AM	297	0.0	OFF	297	0	0.00	0	70.2	70.2	70.2	
5-6 AM	564	0.0	OFF	564	0	0.00	0	70.0	70.0	70.0	
6-7 AM	1242	0.0	OFF	1242	0	0.00	0	69.2	69.2	69.2	
7-8 AM	1678	0.0	OFF	1678	0	0.00	0	68.6	68.6	68.6	
8-9 AM	1218	0.0	OFF	1218	0	0.00	0	69.2	69.2	69.2	
9-10 AM	937	0.0	OFF	937	0	0.00	0	69.6	69.6	69.6	
10-11 AM	908	0.0	1500	908	0	0.58	0	69.6	60.9	42.0	
11AM-NOON	901	0.0	1500	901	0	0.58	0	69.6	60.9	42.0	
NOON-1PM	914	0.0	1500	914	0	0.58	0	69.6	60.9	42.0	
1-2 PM	763	0.0	1500	763	0	0.56	0	69.8	61.3	42.5	
2-3 PM	823	0.0	1500	823	0	0.57	0	69.7	61.1	42.3	
3-4 PM	976	0.0	OFF	976	0	0.00	0	69.5	69.5	69.5	
4-5 PM	987	0.0	OFF	987	0	0.00	0	69.5	69.5	69.5	
5-6 PM	952	0.0	OFF	952	0	0.00	0	69.6	69.6	69.6	
6-7 PM	783	0.0	OFF	783	0	0.00	0	69.7	69.7	69.7	
7-8 PM	578	0.0	OFF	578	0	0.00	0	70.0	70.0	70.0	
8-9 PM	424	0.0	OFF	424	0	0.00	0	70.2	70.2	70.2	
9-10 PM	392	0.0	OFF	392	0	0.00	0	70.2	70.2	70.2	
10-11 PM	262	0.0	OFF	262	0	0.00	0	70.2	70.2	70.2	
11PM-MID	200	0.0	OFF	200	0	0.00	0	70.2	70.2	70.2	

"OFF" INDICATES NO ROAD WORK (ALL LANES OPEN TO TRAFFIC)

----- SITE BREAKDOWN DELAYS -----	
BREAKDOWN DURATION (MINS)	0
RANGE OF QUEUE DELAY - MIN (VEH-H) MAX	0.0
AV BREAKDOWNS PER DAY	0.00
AV QUEUE DELAY/DAY (VEH-H)	0.0
AV TOTAL DELAY/DAY (VEH-H)	0.0

----- SITE ACCIDENT DELAYS -----	
BREAKDOWN DURATION (MINS)	0
RANGE OF QUEUE DELAY - MIN (VEH-H) MAX	0
AV BREAKDOWNS PER DAY	0
AV QUEUE DELAY/DAY (VEH-H)	0
AV TOTAL DELAY/DAY (VEH-H)	0

AVERAGE ACCIDENT NUMBERS (PIA/DAY)	
MAIN ROUTE WITHOUT WORKS	0.0124
MAIN ROUTE WITH WORKS	0.0121
'DIVERSION'	0.0000
<small>PIA: Personal Injury Accidents</small>	
IMPACTS ON ROAD USERS	
ROAD USER COSTS PER DAY	\$487
CONGESTED HOURS PER DAY*	0

*Delays Exceeding User-Specified Maximum

**USH 151: IH 39 TO STH 19 (DANE COUNTY)
OFF-PEAK DAY 2 LANE CLOSURE
NO DIVERSION ROUTE (MAX QUEUE SEGMENT)**

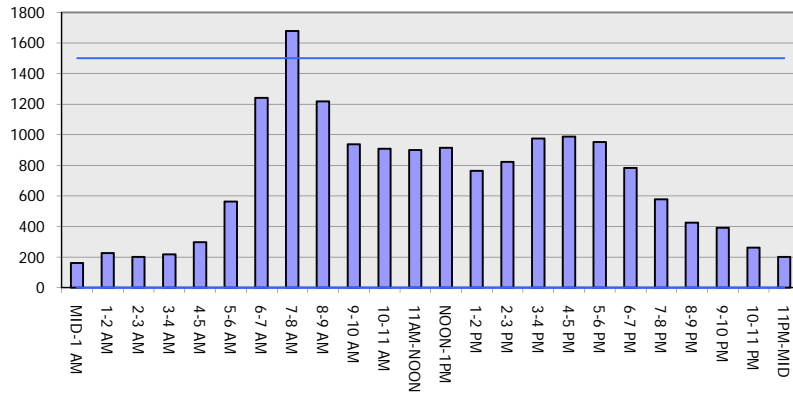
OCTOBER

Analyzed for 2009
Construction Season

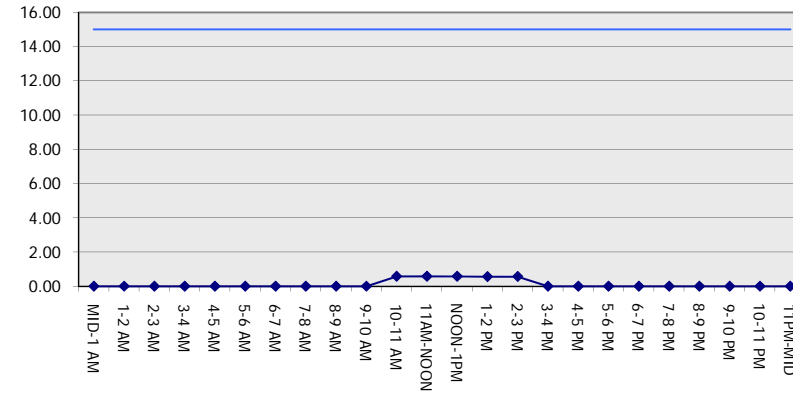
GRAPHICAL REPRESENTATION OF TRAFFIC MODEL INPUT AND OUTPUT

MON-THUR SOUTHBOUND DIRECTION

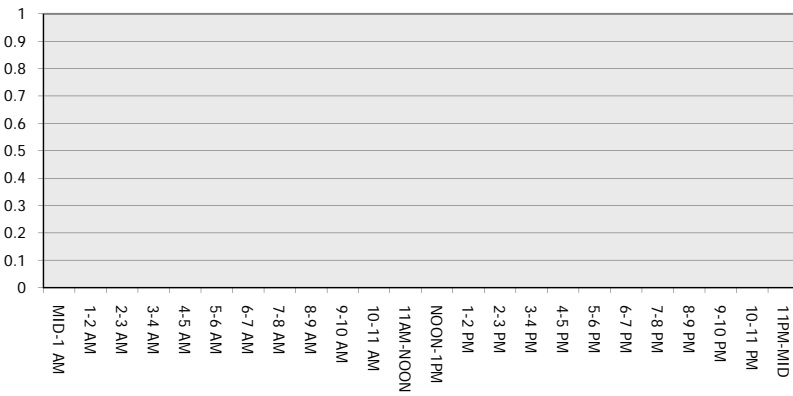
Main Route - Traffic Demand (Vehicles Per Hour)



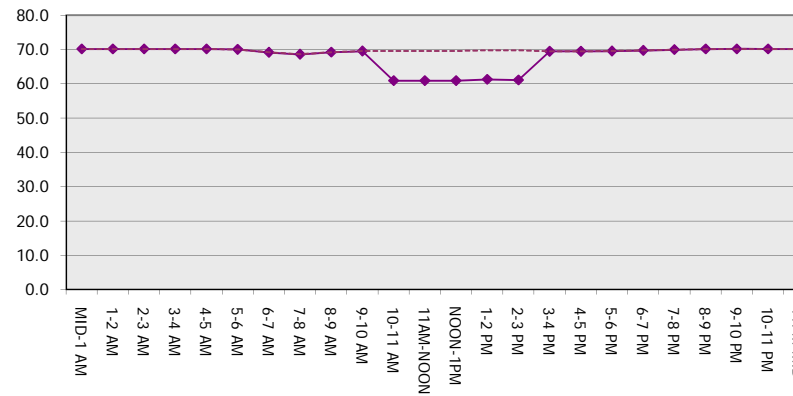
Main Route Average Delay Per Vehicle (Minutes)



Main Route - Average Queue Length (Vehicles)



Main Route - Average Speed (MPH)



USH 151: IH 39 TO STH 19 (DANE COUNTY) OFF-PEAK DAY 2 LANE CLOSURE NO DIVERSION ROUTE (MAX QUEUE SEGMENT)	OCTOBER
	Analyzed for 2009 Construction Season

SUMMARY OF TRAFFIC MODEL OUTPUT

MON-THUR NORTHBOUND DIRECTION

TIME OF DAY	FLOWS AND CAPACITY IN VEH/HR						AVERAGE SPEEDS IN MPH			
	MAIN ROUTE		SITE CAPA CITY	FLOW		AV.DEL PER VEH (MINS)	AVERAGE QUEUE (VEH)	MAIN ROUTE		SITE
	DEMAND FLOW	PCT HEAVY		MAIN ROUTE	'DIVER TED'			WITHOUT WORK ZONE	WITH WORK ZONE	
MID-1 AM	202	0.0	OFF	202	0	0.00	0	70.2	70.2	70.2
1-2 AM	125	0.0	OFF	125	0	0.00	0	70.2	70.2	70.2
2-3 AM	98	0.0	OFF	98	0	0.00	0	70.2	70.2	70.2
3-4 AM	90	0.0	OFF	90	0	0.00	0	70.2	70.2	70.2
4-5 AM	126	0.0	OFF	126	0	0.00	0	70.2	70.2	70.2
5-6 AM	333	0.0	OFF	333	0	0.00	0	70.2	70.2	70.2
6-7 AM	776	0.0	OFF	776	0	0.00	0	69.7	69.7	69.7
7-8 AM	1200	0.0	OFF	1200	0	0.00	0	69.2	69.2	69.2
8-9 AM	985	0.0	OFF	985	0	0.00	0	69.5	69.5	69.5
9-10 AM	952	0.0	OFF	952	0	0.00	0	69.6	69.6	69.6
10-11 AM	1080	0.0	1500	1080	0	0.60	0	69.4	60.5	41.4
11AM-NOON	1350	0.0	1499	1350	0	0.90	0	69.1	56.6	34.3
NOON-1PM	1594	0.0	1499	1594	0	2.45	38	68.7	43.0	30.8
1-2 PM	1606	0.0	1499	1606	0	6.20	136	68.7	27.3	30.8
2-3 PM	1915	0.0	1500	1653	262	13.61+	338	68.4	15.9	30.8
3-4 PM	2479	0.0	OFF	2479	0	0.20	17	67.6	64.5	64.5
4-5 PM	3159	0.0	OFF	3159	0	0.00	0	66.8	66.8	66.8
5-6 PM	2999	0.0	OFF	2999	0	0.00	0	67.0	67.0	67.0
6-7 PM	1884	0.0	OFF	1884	0	0.00	0	68.4	68.4	68.4
7-8 PM	1382	0.0	OFF	1382	0	0.00	0	69.0	69.0	69.0
8-9 PM	1178	0.0	OFF	1178	0	0.00	0	69.2	69.2	69.2
9-10 PM	1010	0.0	OFF	1010	0	0.00	0	69.5	69.5	69.5
10-11 PM	596	0.0	OFF	596	0	0.00	0	70.0	70.0	70.0
11PM-MID	379	0.0	OFF	379	0	0.00	0	70.2	70.2	70.2

"OFF" INDICATES NO ROAD WORK (ALL LANES OPEN TO TRAFFIC)

+ INDICATES QUEUEING EXCEEDS USER-SPECIFIED MAXIMUM LIMIT

----- SITE BREAKDOWN DELAYS -----	
BREAKDOWN DURATION (MINS)	0
RANGE OF QUEUE DELAY - MIN (VEH-H) MAX	0.0
AV BREAKDOWNS PER DAY	0.00
AV QUEUE DELAY/DAY (VEH-H)	0.0
AV TOTAL DELAY/DAY (VEH-H)	0.0

----- SITE ACCIDENT DELAYS -----	
BREAKDOWN DURATION (MINS)	0
RANGE OF QUEUE DELAY - MIN (VEH-H) MAX	0
AV BREAKDOWNS PER DAY	0
AV QUEUE DELAY/DAY (VEH-H)	0
AV TOTAL DELAY/DAY (VEH-H)	0

AVERAGE ACCIDENT NUMBERS (PIA/DAY)	
MAIN ROUTE WITHOUT WORKS	0.0206
MAIN ROUTE WITH WORKS	0.0199
'DIVERSION'	0.0005

PIA: Personal Injury Accidents

ECONOMIC IMPACT ON ROAD USERS	
ROAD USER COSTS PER DAY	\$8,326
CONGESTED HOURS PER DAY*	1

*Delays Exceeding User-Specified Maximum

**USH 151: IH 39 TO STH 19 (DANE COUNTY)
OFF-PEAK DAY 2 LANE CLOSURE
NO DIVERSION ROUTE (MAX QUEUE SEGMENT)**

OCTOBER

Analyzed for 2009
Construction Season

**GRAPHICAL REPRESENTATION OF TRAFFIC MODEL INPUT AND OUTPUT
MON-THUR NORTHBOUND DIRECTION**

