

USH 151: IH 39 TO STH 19 (DANE COUNTY) OFF-PEAK DAY 2 LANE CLOSURE NO DIVERSION ROUTE (MAX QUEUE SEGMENT)	OCTOBER Analyzed for 2009 Construction Season
--	--

SUMMARY OF TRAFFIC MODEL OUTPUT

FRIDAY SOUTHBOUND DIRECTION

TIME OF DAY	FLOWS AND CAPACITY IN VEH/HR						AVERAGE SPEEDS IN MPH				
	MAIN ROUTE		SITE CAPA CITY	FLOW		AV.DEL PER VEH (MINS)	AVERAGE QUEUE (VEH)	MAIN ROUTE		SITE	
	DEMAND FLOW	PCT HEAVY		MAIN ROUTE	'DIVER TED'			WITHOUT WORK ZONE	WITH WORK ZONE		
MID-1 AM	155	0.0	OFF	155	0	0.00	0	70.2	70.2	70.2	
1-2 AM	168	0.0	OFF	168	0	0.00	0	70.2	70.2	70.2	
2-3 AM	134	0.0	OFF	134	0	0.00	0	70.2	70.2	70.2	
3-4 AM	209	0.0	OFF	209	0	0.00	0	70.2	70.2	70.2	
4-5 AM	317	0.0	OFF	317	0	0.00	0	70.2	70.2	70.2	
5-6 AM	699	0.0	OFF	699	0	0.00	0	69.9	69.9	69.9	
6-7 AM	1562	0.0	OFF	1562	0	0.00	0	68.8	68.8	68.8	
7-8 AM	2316	0.0	OFF	2316	0	0.00	0	67.9	67.9	67.9	
8-9 AM	1604	0.0	OFF	1604	0	0.00	0	68.7	68.7	68.7	
9-10 AM	1143	0.0	OFF	1143	0	0.00	0	69.3	69.3	69.3	
10-11 AM	1138	0.0	1500	1138	0	0.63	0	69.3	60.1	40.6	
11AM-NOON	1202	0.0	1500	1202	0	0.71	0	69.2	58.9	38.4	
NOON-1PM	1204	0.0	1500	1204	0	0.71	0	69.2	58.9	38.3	
1-2 PM	1187	0.0	1500	1187	0	0.69	0	69.2	59.2	38.9	
2-3 PM	1176	0.0	1500	1176	0	0.68	0	69.2	59.4	39.2	
3-4 PM	1272	0.0	OFF	1272	0	0.00	0	69.2	69.2	69.2	
4-5 PM	1413	0.0	OFF	1413	0	0.00	0	69.0	69.0	69.0	
5-6 PM	1352	0.0	OFF	1352	0	0.00	0	69.1	69.1	69.1	
6-7 PM	1174	0.0	OFF	1174	0	0.00	0	69.3	69.3	69.3	
7-8 PM	758	0.0	OFF	758	0	0.00	0	69.8	69.8	69.8	
8-9 PM	547	0.0	OFF	547	0	0.00	0	70.0	70.0	70.0	
9-10 PM	442	0.0	OFF	442	0	0.00	0	70.2	70.2	70.2	
10-11 PM	317	0.0	OFF	317	0	0.00	0	70.2	70.2	70.2	
11PM-MID	275	0.0	OFF	275	0	0.00	0	70.2	70.2	70.2	

"OFF" INDICATES NO ROAD WORK (ALL LANES OPEN TO TRAFFIC)

----- SITE BREAKDOWN DELAYS -----	
BREAKDOWN DURATION (MINS)	0
RANGE OF QUEUE DELAY - MIN (VEH-H) MAX	0.0
AV BREAKDOWNS PER DAY	0.00
AV QUEUE DELAY/DAY (VEH-H)	0.0
AV TOTAL DELAY/DAY (VEH-H)	0.0

----- SITE ACCIDENT DELAYS -----	
BREAKDOWN DURATION (MINS)	0
RANGE OF QUEUE DELAY - MIN (VEH-H) MAX	0
AV BREAKDOWNS PER DAY	0
AV QUEUE DELAY/DAY (VEH-H)	0
AV TOTAL DELAY/DAY (VEH-H)	0

AVERAGE ACCIDENT NUMBERS (PIA/DAY)	
MAIN ROUTE WITHOUT WORKS	0.0163
MAIN ROUTE WITH WORKS	0.0159
'DIVERSION'	0.0000
<small>PIA: Personal Injury Accidents</small>	
IMPACTS ON ROAD USERS	
ROAD USER COSTS PER DAY	\$878
CONGESTED HOURS PER DAY*	0

*Delays Exceeding User-Specified Maximum

**USH 151: IH 39 TO STH 19 (DANE COUNTY)
OFF-PEAK DAY 2 LANE CLOSURE
NO DIVERSION ROUTE (MAX QUEUE SEGMENT)**

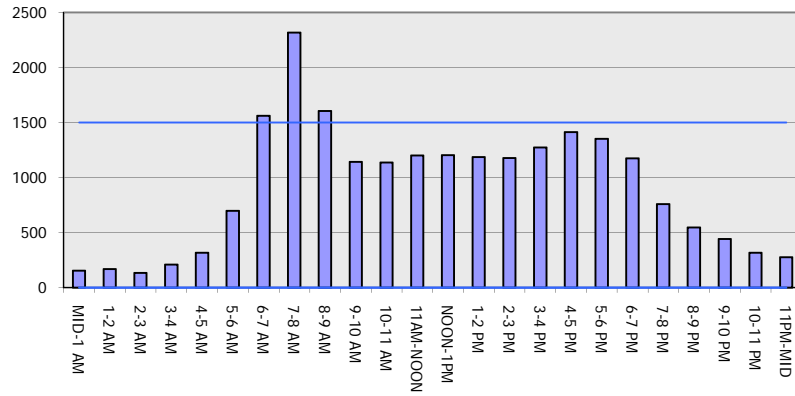
OCTOBER

Analyzed for 2009
Construction Season

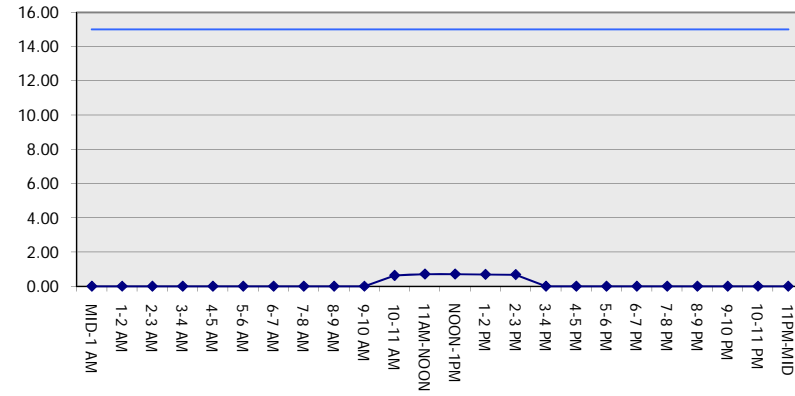
GRAPHICAL REPRESENTATION OF TRAFFIC MODEL INPUT AND OUTPUT

FRIDAY SOUTHBOUND DIRECTION

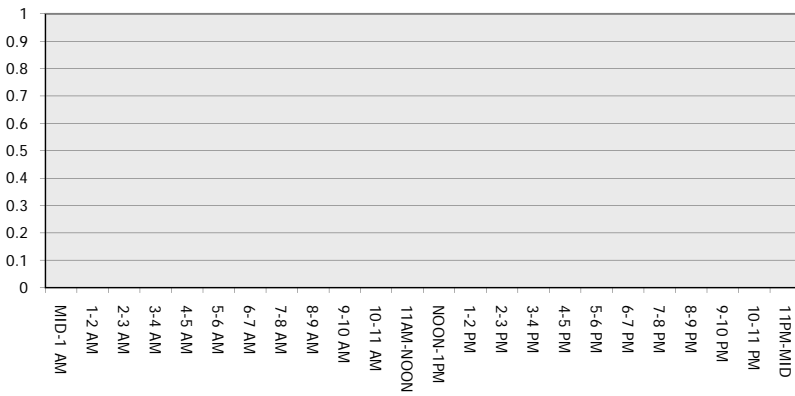
Main Route - Traffic Demand (Vehicles Per Hour)



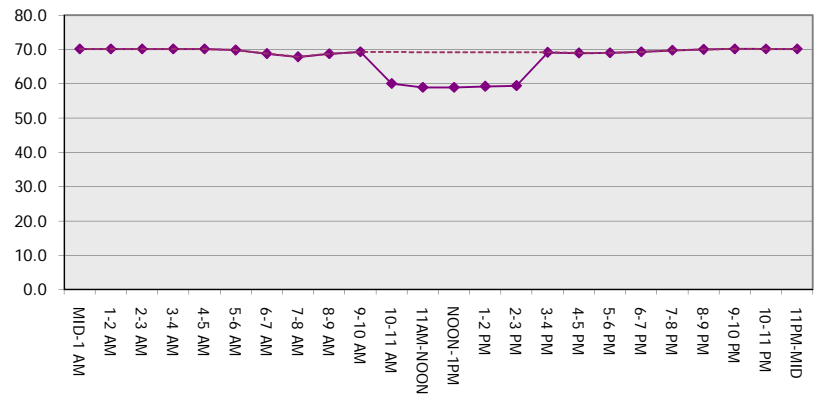
Main Route Average Delay Per Vehicle (Minutes)



Main Route - Average Queue Length (Vehicles)



Main Route - Average Speed (MPH)



USH 151: IH 39 TO STH 19 (DANE COUNTY) OFF-PEAK DAY 2 LANE CLOSURE NO DIVERSION ROUTE (MAX QUEUE SEGMENT)	OCTOBER Analyzed for 2009 Construction Season
--	--

SUMMARY OF TRAFFIC MODEL OUTPUT

FRIDAY NORTHBOUND DIRECTION

TIME OF DAY	FLOWS AND CAPACITY IN VEH/HR						AVERAGE SPEEDS IN MPH			
	MAIN ROUTE		SITE CAPA CITY	FLOW		AV.DEL PER VEH (MINS)	AVERAGE QUEUE (VEH)	MAIN ROUTE		SITE
	DEMAND FLOW	PCT HEAVY		MAIN ROUTE	'DIVER TED'			WITHOUT WORK ZONE	WITH WORK ZONE	
MID-1 AM	252	0.0	OFF	252	0	0.00	0	70.2	70.2	70.2
1-2 AM	182	0.0	OFF	182	0	0.00	0	70.2	70.2	70.2
2-3 AM	147	0.0	OFF	147	0	0.00	0	70.2	70.2	70.2
3-4 AM	101	0.0	OFF	101	0	0.00	0	70.2	70.2	70.2
4-5 AM	135	0.0	OFF	135	0	0.00	0	70.2	70.2	70.2
5-6 AM	310	0.0	OFF	310	0	0.00	0	70.2	70.2	70.2
6-7 AM	736	0.0	OFF	736	0	0.00	0	69.8	69.8	69.8
7-8 AM	1200	0.0	OFF	1200	0	0.00	0	69.2	69.2	69.2
8-9 AM	1011	0.0	OFF	1011	0	0.00	0	69.5	69.5	69.5
9-10 AM	1072	0.0	OFF	1072	0	0.00	0	69.4	69.4	69.4
10-11 AM	1263	0.0	1499	1263	0	0.79	0	69.2	57.9	36.6
11AM-NOON	1644	0.0	1499	1644	0	2.77	51	68.7	41.0	30.8
NOON-1PM	1937	0.0	1500	1709	228	12.59+	318	68.3	16.8	30.8
1-2 PM	2075	0.0	1499	1500	575	16.33+	399	68.2	13.8	30.8
2-3 PM	2444	0.0	1500	1500	944	16.31+	400	67.7	13.8	30.8
3-4 PM	2838	0.0	OFF	2838	0	0.23	19	67.2	63.8	63.8
4-5 PM	3175	0.0	OFF	3175	0	0.00	0	66.8	66.8	66.8
5-6 PM	3036	0.0	OFF	3036	0	0.00	0	66.9	66.9	66.9
6-7 PM	2130	0.0	OFF	2130	0	0.00	0	68.1	68.1	68.1
7-8 PM	1549	0.0	OFF	1549	0	0.00	0	68.8	68.8	68.8
8-9 PM	1375	0.0	OFF	1375	0	0.00	0	69.0	69.0	69.0
9-10 PM	1141	0.0	OFF	1141	0	0.00	0	69.3	69.3	69.3
10-11 PM	841	0.0	OFF	841	0	0.00	0	69.7	69.7	69.7
11PM-MID	631	0.0	OFF	631	0	0.00	0	69.9	69.9	69.9

"OFF" INDICATES NO ROAD WORK (ALL LANES OPEN TO TRAFFIC)

+ INDICATES QUEUEING EXCEEDS USER-SPECIFIED MAXIMUM LIMIT

----- SITE BREAKDOWN DELAYS -----	
BREAKDOWN DURATION (MINS)	0
RANGE OF QUEUE DELAY - MIN (VEH-H) MAX	0.0
AV BREAKDOWNS PER DAY	0.00
AV QUEUE DELAY/DAY (VEH-H)	0.0
AV TOTAL DELAY/DAY (VEH-H)	0.0

----- SITE ACCIDENT DELAYS -----	
BREAKDOWN DURATION (MINS)	0
RANGE OF QUEUE DELAY - MIN (VEH-H) MAX	0
AV BREAKDOWNS PER DAY	0
AV QUEUE DELAY/DAY (VEH-H)	0
AV TOTAL DELAY/DAY (VEH-H)	0

AVERAGE ACCIDENT NUMBERS (PIA/DAY)	
MAIN ROUTE WITHOUT WORKS	0.0233
MAIN ROUTE WITH WORKS	0.0215
'DIVERSION'	0.0030

PIA: Personal Injury Accidents

ECONOMIC IMPACT ON ROAD USERS	
ROAD USER COSTS PER DAY	\$22,642
CONGESTED HOURS PER DAY*	3

*Delays Exceeding User-Specified Maximum

**USH 151: IH 39 TO STH 19 (DANE COUNTY)
 OFF-PEAK DAY 2 LANE CLOSURE
 NO DIVERSION ROUTE (MAX QUEUE SEGMENT)**

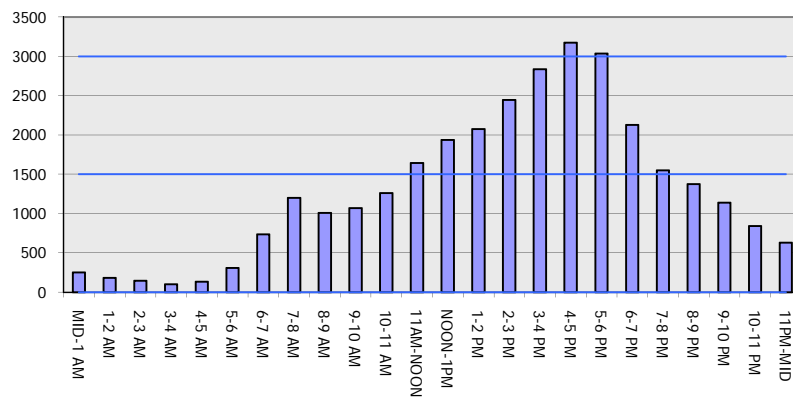
OCTOBER

Analyzed for 2009
 Construction Season

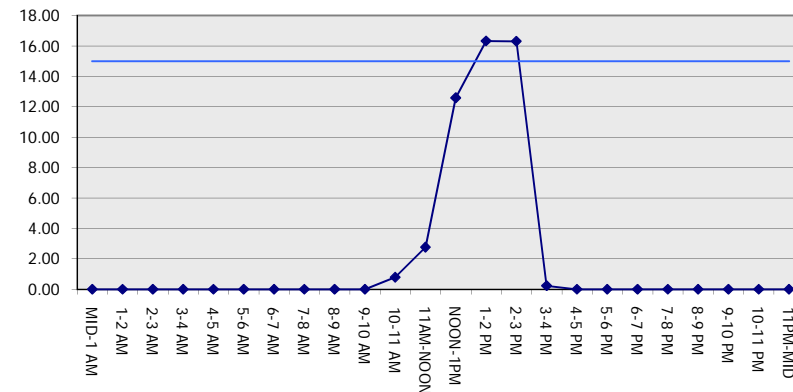
GRAPHICAL REPRESENTATION OF TRAFFIC MODEL INPUT AND OUTPUT

FRIDAY NORTHBOUND DIRECTION

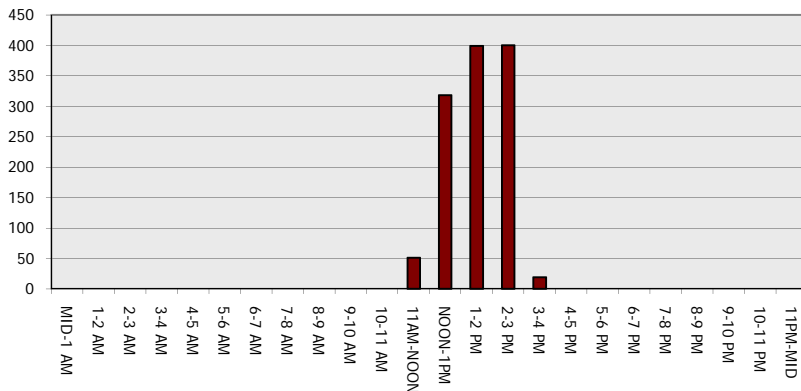
Main Route - Traffic Demand (Vehicles Per Hour)



Main Route Average Delay Per Vehicle (Minutes)



Main Route - Average Queue Length (Vehicles)



Main Route - Average Speed (MPH)

