

<b>USH 12/18: USH 51 TO IH 39/90 (DANE COUNTY)</b> <b>OFF-PEAK DAY CLOSURE</b> <b>DIVERSION ROUTE: IH 39/90 - STH 30 - USH 51</b>	<b>AUGUST</b>
	Analyzed for 2009 Construction Season

**SUMMARY OF TRAFFIC MODEL OUTPUT**

**FRIDAY WESTBOUND DIRECTION**

TIME OF DAY	FLOWS AND CAPACITY IN VEH/HR								AVERAGE SPEEDS IN MPH						
	MAIN ROUTE		ALTERNATE ROUTE		SITE CAPA CITY	FLOW MAIN ROUTE	FLOW DIVER -TING	TOTAL DIVN FLOW	AV.DEL PER VEH (MINS)	AVERAGE QUEUE (VEH)	MAIN ROUTE		ALTERNATE ROUTE		
	DEMAND FLOW	PCT HEAVY	NORMAL FLOW	PCT HEAVY							WITHOUT WORK ZN	WITH WORK ZN	SITE	WITHOUT WORK ZN	WITH WORK ZN
MID-1 AM	426	0.0	253	0.0	OFF	426	0	253	0.00	0	70.2	70.2	70.2	38.4	38.4
1-2 AM	263	0.0	156	0.0	OFF	263	0	156	0.00	0	70.2	70.2	70.2	38.9	38.9
2-3 AM	178	0.0	106	0.0	OFF	178	0	106	0.00	0	70.2	70.2	70.2	39.2	39.2
3-4 AM	180	0.0	107	0.0	OFF	180	0	107	0.00	0	70.2	70.2	70.2	39.2	39.2
4-5 AM	302	0.0	179	0.0	OFF	302	0	179	0.00	0	70.2	70.2	70.2	38.8	38.8
5-6 AM	1104	0.0	655	0.0	OFF	1104	0	655	0.00	0	69.4	69.4	69.4	36.4	36.4
6-7 AM	2887	0.0	1715	0.0	OFF	2887	0	1715+	0.00	0	67.1	67.1	67.1	30.9	30.9
7-8 AM	3913	0.0	2324	0.0	OFF	3913	0	2324+	0.00	0	64.1	64.1	64.1	27.8	27.8
8-9 AM	3068	0.0	1822	0.0	OFF	3068	0	1822+	0.00	0	66.9	66.9	66.9	30.4	30.4
9-10 AM	2481	0.0	1473	0.0	OFF	2481	0	1473+	0.00	0	67.6	67.6	67.6	32.2	32.2
10-11 AM	2390	0.0	1420	0.0	3000	2390	0	1420+	0.33	0	67.8	53.5	49.6	32.4	32.4
11A-NOON	2614	0.0	1552	0.0	3000	2614	0	1552+	0.48	0	67.5	48.8	44.2	31.8	31.8
NOON-1PM	2735	0.0	1624	0.0	3000	2735	0	1624+	0.56	0	67.3	46.6	41.8	31.4	31.4
1-2 PM	2797	0.0	1661	0.0	3000	2797	0	1661+	0.60	0	67.3	45.5	40.6	31.2	31.2
2-3 PM	2914	0.0	1731	0.0	2999	2914	0	1731+	0.67	0	67.1	43.7	38.6	30.9	30.9
3-4 PM	3059	0.0	1817	0.0	OFF	3059	0	1817+	0.00	0	66.9	66.9	66.9	30.4	30.4
4-5 PM	3096	0.0	1838	0.0	OFF	3096	0	1838+	0.00	0	66.9	66.9	66.9	30.3	30.3
5-6 PM	2967	0.0	1762	0.0	OFF	2967	0	1762+	0.00	0	67.1	67.1	67.1	30.7	30.7
6-7 PM	2419	0.0	1437	0.0	OFF	2419	0	1437+	0.00	0	67.8	67.8	67.8	32.4	32.4
7-8 PM	1864	0.0	1107	0.0	OFF	1864	0	1107	0.00	0	68.4	68.4	68.4	34.0	34.0
8-9 PM	1580	0.0	939	0.0	OFF	1580	0	939	0.00	0	68.7	68.7	68.7	34.9	34.9
9-10 PM	1415	0.0	840	0.0	OFF	1415	0	840	0.00	0	69.0	69.0	69.0	35.4	35.4
10-11 PM	1075	0.0	638	0.0	OFF	1075	0	638	0.00	0	69.4	69.4	69.4	36.5	36.5
11PM-MID	785	0.0	466	0.0	OFF	785	0	466	0.00	0	69.7	69.7	69.7	37.3	37.3

"OFF" INDICATES NO ROAD WORK (ALL LANES OPEN TO TRAFFIC)

+ INDICATES DIVERSION FLOW EXCEEDS USER-SPECIFIED WARNING LIMIT

*----- SITE BREAKDOWN DELAYS -----*	
BREAKDOWN DURATION (MINS)	0
RANGE OF QUEUE DELAY - MIN	0.0
(VEH-H) MAX	0.0
RANGE OF DIVN DELAY - MIN	0.0
(VEH-H) MAX	0.0
AV BREAKDOWNS PER DAY	0.00
AV QUEUE DELAY/DAY (VEH-H)	0.0
AV DIVN DELAY/DAY (VEH-H)	0.0
AV TOTAL DELAY/DAY (VEH-H)	0.0

*----- SITE ACCIDENT DELAYS -----*	
ACCIDENT DURATION (MINS)	0
RANGE OF QUEUE DELAY - MIN	0.0
(VEH-H) MAX	0.0
RANGE OF DIVN DELAY - MIN	0.0
(VEH-H) MAX	0.0
AV ACCIDENTS PER DAY	0.00
AV QUEUE DELAY/DAY (VEH-H)	0.0
AV DIVN DELAY/DAY (VEH-H)	0.0
AV TOTAL DELAY/DAY (VEH-H)	0.0

AVERAGE ACCIDENT NUMBERS (PIA/DAY)	
MAIN ROUTE WITHOUT WORKS	0.0103
MAIN ROUTE WITH WORKS	0.0095
DIVERSION	0.0426

PIA: Personal Injury Accidents

IMPACTS ON ROAD USERS	
ROAD USER COSTS PER DAY ( DOLLARS)	\$1,267
CONGESTED HOURS PER DAY*	0

\*Delays Exceeding 15 Minutes

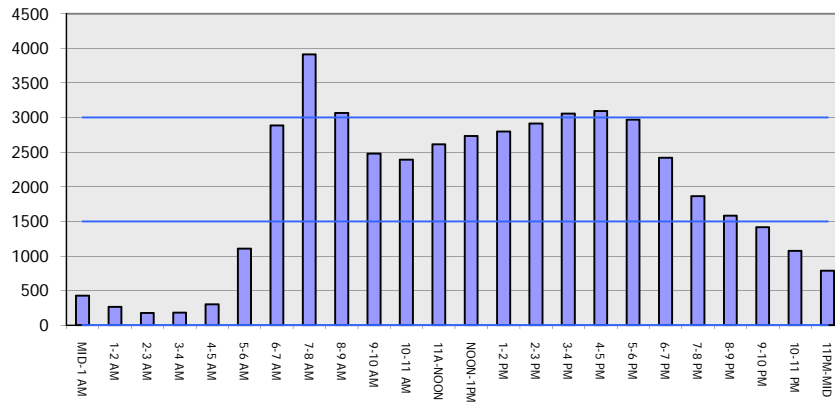
**USH 12/18: USH 51 TO IH 39/90 (DANE COUNTY)**  
**OFF-PEAK DAY CLOSURE**  
**DIVERSION ROUTE: IH 39/90 - STH 30 - USH 51**

**AUGUST**  
 Analyzed for 2009  
 Construction Season

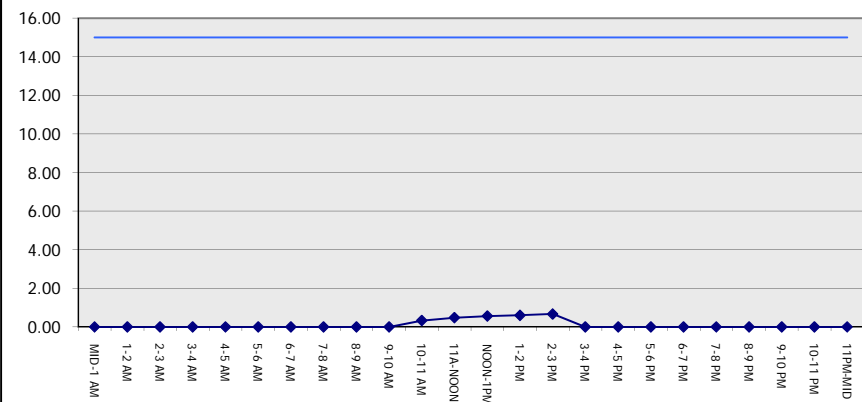
**GRAPHICAL REPRESENTATION OF TRAFFIC MODEL INPUT AND OUTPUT**

**FRIDAY WESTBOUND DIRECTION**

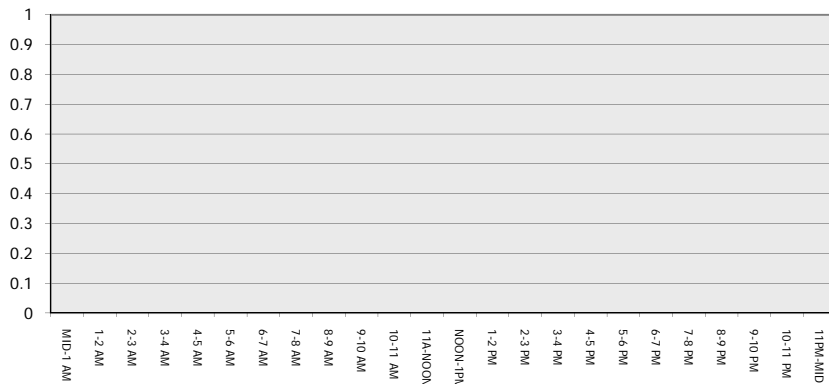
**Main Route - Traffic Demand (Vehicles Per Hour)**



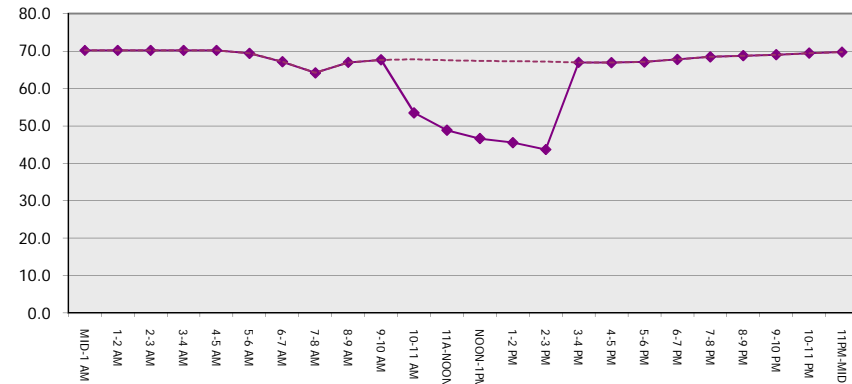
**Main Route Average Delay Per Vehicle (Minutes)**



**Main Route - Average Queue Length (Vehicles)**



**Main Route - Average Speed (MPH)**



<b>USH 12/18: USH 51 TO IH 39/90 (DANE COUNTY)</b> <b>OFF-PEAK DAY CLOSURE</b> <b>DIVERSION ROUTE: IH 39/90 - STH 30 - USH 51</b>	<b>AUGUST</b>
	Analyzed for 2009 Construction Season

**SUMMARY OF TRAFFIC MODEL OUTPUT**

FRIDAY EASTBOUND DIRECTION

TIME OF DAY	FLOWS AND CAPACITY IN VEH/HR								AVERAGE SPEEDS IN MPH						
	MAIN		DIVERSION		SITE CAPA CITY	FLOW MAIN ROUTE	FLOW DIVER -TING	TOTAL DIVN FLOW	AV.DEL PER VEH (MINS)	AVERAGE QUEUE (VEH)	MAIN ROUTE		SITE	ALTERNATE ROUTE	
	DEMAND FLOW	PCT HEAVY	NORMAL FLOW	PCT HEAVY							WITHOUT WORK ZN	WITH WORK ZN		WITHOUT WORK ZN	WITH WORK ZN
MID-1 AM	328	0.0	195	0.0	OFF	328	0	195	0.00	0	70.2	70.2	70.2	38.8	38.8
1-2 AM	230	0.0	136	0.0	OFF	230	0	136	0.00	0	70.2	70.2	70.2	39.1	39.1
2-3 AM	204	0.0	121	0.0	OFF	204	0	121	0.00	0	70.2	70.2	70.2	39.1	39.1
3-4 AM	181	0.0	108	0.0	OFF	181	0	108	0.00	0	70.2	70.2	70.2	39.2	39.2
4-5 AM	314	0.0	186	0.0	OFF	314	0	186	0.00	0	70.2	70.2	70.2	38.8	38.8
5-6 AM	796	0.0	473	0.0	OFF	796	0	473	0.00	0	69.7	69.7	69.7	37.3	37.3
6-7 AM	1869	0.0	1110	0.0	OFF	1869	0	1110	0.00	0	68.4	68.4	68.4	34.0	34.0
7-8 AM	2692	0.0	1599	0.0	OFF	2692	0	1599+	0.00	0	67.4	67.4	67.4	31.5	31.5
8-9 AM	2345	0.0	1393	0.0	OFF	2345	0	1393+	0.00	0	67.8	67.8	67.8	32.6	32.6
9-10 AM	2205	0.0	1309	0.0	OFF	2205	0	1309+	0.00	0	68.0	68.0	68.0	33.0	33.0
10-11 AM	2400	0.0	1425	0.0	3000	2400	0	1425+	0.34	0	67.8	53.3	49.3	32.4	32.4
11A-NOON	2743	0.0	1629	0.0	2999	2743	0	1629+	0.56	0	67.3	46.5	41.7	31.4	31.4
NOON-1PM	3116	0.0	1851	0.0	2999	3116	0	1851+	1.43	44	66.9	31.2	37.3	30.2	30.2
1-2 PM	3177	0.0	1887	0.0	2999	3177	0	1887+	4.12	192	66.8	17.3	37.3	30.1	30.2
2-3 PM	3509	0.0	2083	0.0	3000	3509	0	2083+	9.84	519	66.4	11.5	37.3	29.0	29.9
3-4 PM	4069	0.0	2416	0.0	OFF	4069	0	2416+	1.79	166	63.0	26.9	26.9	27.3	27.3
4-5 PM	4084	0.0	2426	0.0	OFF	4084	0	2426+	0.00	0	63.0	63.0	63.0	27.3	27.3
5-6 PM	3617	0.0	2148	0.0	OFF	3617	0	2148+	0.00	0	66.1	66.1	66.1	28.7	28.7
6-7 PM	2486	0.0	1476	0.0	OFF	2486	0	1476+	0.00	0	67.6	67.6	67.6	32.2	32.2
7-8 PM	1780	0.0	1057	0.0	OFF	1780	0	1057	0.00	0	68.5	68.5	68.5	34.3	34.3
8-9 PM	1524	0.0	905	0.0	OFF	1524	0	905	0.00	0	68.9	68.9	68.9	35.1	35.1
9-10 PM	1355	0.0	805	0.0	OFF	1355	0	805	0.00	0	69.1	69.1	69.1	35.6	35.6
10-11 PM	1092	0.0	649	0.0	OFF	1092	0	649	0.00	0	69.4	69.4	69.4	36.4	36.4
11PM-MID	752	0.0	447	0.0	OFF	752	0	447	0.00	0	69.8	69.8	69.8	37.4	37.4

"OFF" INDICATES NO ROAD WORK (ALL LANES OPEN TO TRAFFIC)

+ INDICATES DIVERSION FLOW EXCEEDS USER-SPECIFIED WARNING LIMIT

*----- SITE BREAKDOWN DELAYS -----*	
BREAKDOWN DURATION (MINS)	0
RANGE OF QUEUE DELAY - MIN	0.0
(VEH-H) MAX	0.0
RANGE OF DIVN DELAY - MIN	0.0
(VEH-H) MAX	0.0
AV BREAKDOWNS PER DAY	0.00
AV QUEUE DELAY/DAY (VEH-H)	0.0
AV DIVN DELAY/DAY (VEH-H)	0.0
AV TOTAL DELAY/DAY (VEH-H)	0.0

*----- SITE ACCIDENT DELAYS -----*	
ACCIDENT DURATION (MINS)	0
RANGE OF QUEUE DELAY - MIN	0.0
(VEH-H) MAX	0.0
RANGE OF DIVN DELAY - MIN	0.0
(VEH-H) MAX	0.0
AV ACCIDENTS PER DAY	0.00
AV QUEUE DELAY/DAY (VEH-H)	0.0
AV DIVN DELAY/DAY (VEH-H)	0.0
AV TOTAL DELAY/DAY (VEH-H)	0.0

AVERAGE ACCIDENT NUMBERS (PIA/DAY)	
MAIN ROUTE WITHOUT WORKS	0.0104
MAIN ROUTE WITH WORKS	0.0094
DIVERSION	0.0430

PIA: Personal Injury Accidents

IMPACTS ON ROAD USERS	
ROAD USER COSTS PER DAY ( DOLLARS)	\$10,854
CONGESTED HOURS PER DAY*	0

\*Delays Exceeding 15 Minutes

**USH 12/18: USH 51 TO IH 39/90 (DANE COUNTY)**  
**OFF-PEAK DAY CLOSURE**  
**DIVERSION ROUTE: IH 39/90 - STH 30 - USH 51**

**AUGUST**  
 Analyzed for 2009  
 Construction Season

**GRAPHICAL REPRESENTATION OF TRAFFIC MODEL INPUT AND OUTPUT**  
**FRIDAY EASTBOUND DIRECTION**

