

USH 12/14: GAMMON RD TO VERONA RD (DANE COUNTY) OFF-PEAK DAY CLOSURE NO DIVERSION ROUTE (MAX QUEUE METHOD)	OCTOBER
	Analyzed for 2009 Construction Season

SUMMARY OF TRAFFIC MODEL OUTPUT

MON-THUR WESTBOUND DIRECTION

TIME OF DAY	FLOWS AND CAPACITY IN VEH/HR						AVERAGE SPEEDS IN MPH				
	MAIN ROUTE		SITE CAPA CITY	FLOW		AV.DEL PER VEH (MINS)	AVERAGE QUEUE (VEH)	MAIN ROUTE		SITE	
	DEMAND FLOW	PCT HEAVY		MAIN ROUTE	'DIVER TED'			WITHOUT WORK ZONE	WITH WORK ZONE		
MID-1 AM	295	0.0	OFF	295	0	0.00	0	60.2	60.2	60.2	
1-2 AM	174	0.0	OFF	174	0	0.00	0	60.2	60.2	60.2	
2-3 AM	107	0.0	OFF	107	0	0.00	0	60.2	60.2	60.2	
3-4 AM	83	0.0	OFF	83	0	0.00	0	60.2	60.2	60.2	
4-5 AM	101	0.0	OFF	101	0	0.00	0	60.2	60.2	60.2	
5-6 AM	221	0.0	OFF	221	0	0.00	0	60.2	60.2	60.2	
6-7 AM	680	0.0	OFF	680	0	0.00	0	60.2	60.2	60.2	
7-8 AM	2264	0.0	OFF	2264	0	0.00	0	60.2	60.2	60.2	
8-9 AM	4145	0.0	OFF	4145	0	0.00	0	44.0	44.0	44.0	
9-10 AM	3436	0.0	OFF	3436	0	0.00	0	51.3	51.3	51.3	
10-11 AM	2283	0.0	1499	1969	314	12.42+	324	60.2	11.7	30.8	
11AM-NOON	2151	0.0	1499	1495	656	16.24+	413	60.2	9.9	30.8	
NOON-1PM	2421	0.0	1499	1490	931	16.29+	414	60.2	9.9	30.8	
1-2 PM	2685	0.0	1499	1482	1203	16.28+	416	59.0	9.8	30.8	
2-3 PM	2586	0.0	1499	1493	1093	16.28+	415	60.0	9.9	30.8	
3-4 PM	2761	0.0	OFF	2761	0	1.36	74	58.2	39.6	39.6	
4-5 PM	3164	0.0	OFF	3164	0	0.00	0	54.1	54.1	54.1	
5-6 PM	3926	0.0	OFF	3926	0	0.00	0	46.3	46.3	46.3	
6-7 PM	3876	0.0	OFF	3876	0	0.00	0	46.8	46.8	46.8	
7-8 PM	2550	0.0	OFF	2550	0	0.00	0	60.2	60.2	60.2	
8-9 PM	1663	0.0	OFF	1663	0	0.00	0	60.2	60.2	60.2	
9-10 PM	1290	0.0	OFF	1290	0	0.00	0	60.2	60.2	60.2	
10-11 PM	1005	0.0	OFF	1005	0	0.00	0	60.2	60.2	60.2	
11PM-MID	607	0.0	OFF	607	0	0.00	0	60.2	60.2	60.2	

"OFF" INDICATES NO ROAD WORK (ALL LANES OPEN TO TRAFFIC)

+ INDICATES QUEUEING EXCEEDS USER-SPECIFIED MAXIMUM LIMIT

----- SITE BREAKDOWN DELAYS -----	
BREAKDOWN DURATION (MINS)	0
RANGE OF QUEUE DELAY - MIN (VEH-H) MAX	0.0
AV BREAKDOWNS PER DAY	0.00
AV QUEUE DELAY/DAY (VEH-H)	0.0
AV TOTAL DELAY/DAY (VEH-H)	0.0

----- SITE ACCIDENT DELAYS -----	
BREAKDOWN DURATION (MINS)	0
RANGE OF QUEUE DELAY - MIN (VEH-H) MAX	0
AV BREAKDOWNS PER DAY	0
AV QUEUE DELAY/DAY (VEH-H)	0
AV TOTAL DELAY/DAY (VEH-H)	0

AVERAGE ACCIDENT NUMBERS (PIA/DAY)	
MAIN ROUTE WITHOUT WORKS	0.0198
MAIN ROUTE WITH WORKS	0.0174
'DIVERSION'	0.0043
<small>PIA: Personal Injury Accidents</small>	
IMPACTS ON ROAD USERS	
ROAD USER COSTS PER DAY	\$41,501
CONGESTED HOURS PER DAY*	5

*Delays Exceeding User-Specified Maximum

**USH 12/14: GAMMON RD TO VERONA RD (DANE COUNTY)
OFF-PEAK DAY CLOSURE
NO DIVERSION ROUTE (MAX QUEUE METHOD)**

OCTOBER

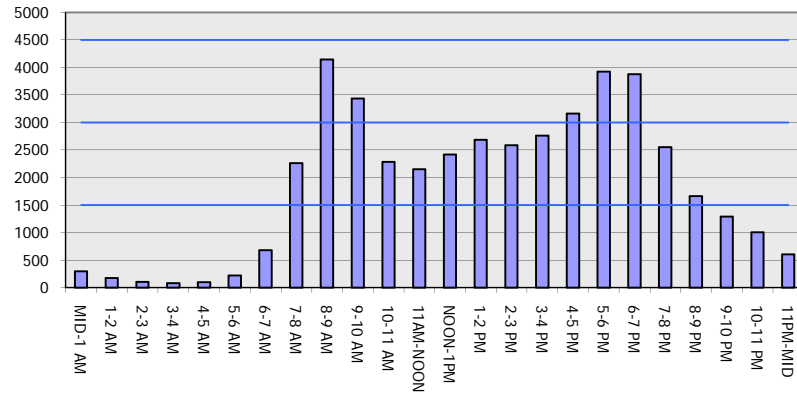
Analyzed for 2009
Construction Season

GRAPHICAL REPRESENTATION OF TRAFFIC MODEL INPUT AND OUTPUT

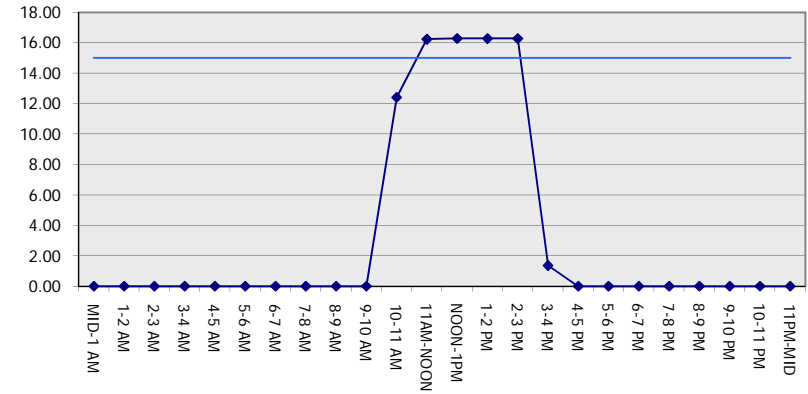
MON-THUR

WESTBOUND DIRECTION

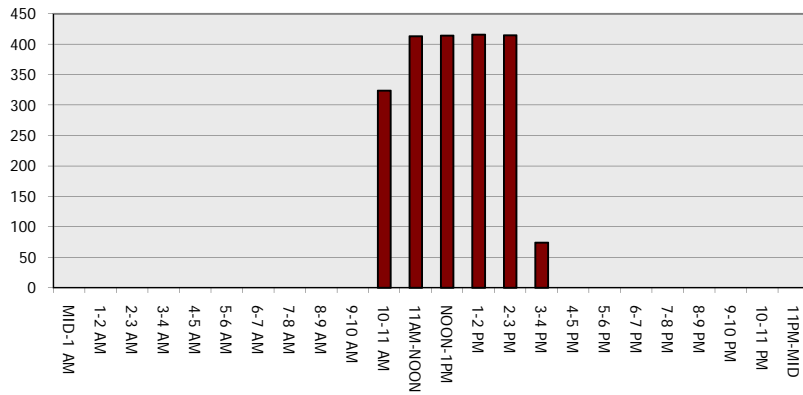
Main Route - Traffic Demand (Vehicles Per Hour)



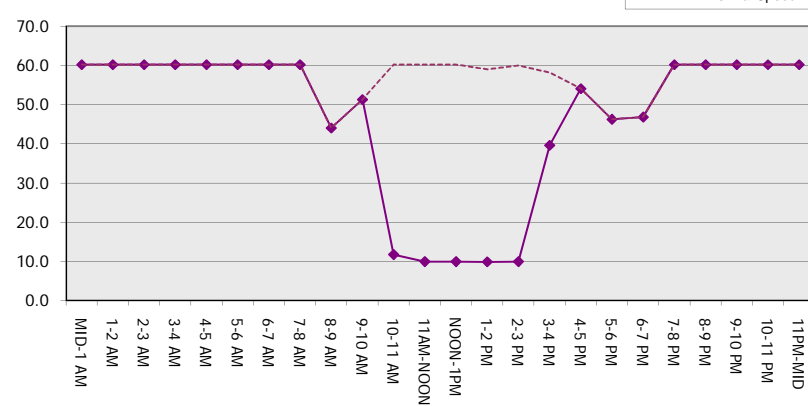
Main Route Average Delay Per Vehicle (Minutes)



Main Route - Average Queue Length (Vehicles)



Main Route - Average Speed (MPH)



**USH 12/14: GAMMON RD TO VERONA RD (DANE COUNTY)
OFF-PEAK DAY CLOSURE
NO DIVERSION ROUTE (MAX QUEUE METHOD)**

OCTOBER
Analyzed for 2009
Construction Season

SUMMARY OF TRAFFIC MODEL OUTPUT
MON-THUR EASTBOUND DIRECTION

TIME OF DAY	FLOWS AND CAPACITY IN VEH/HR						AVERAGE SPEEDS IN MPH			
	MAIN ROUTE		SITE CAPA CITY	FLOW		AV.DEL PER VEH (MINS)	AVERAGE QUEUE (VEH)	MAIN ROUTE		SITE
	DEMAND FLOW	PCT HEAVY		MAIN ROUTE	'DIVER TED'			WITHOUT WORK ZONE	WITH WORK ZONE	
MID-1 AM	421	0.0	OFF	421	0	0.00	0	60.2	60.2	60.2
1-2 AM	196	0.0	OFF	196	0	0.00	0	60.2	60.2	60.2
2-3 AM	130	0.0	OFF	130	0	0.00	0	60.2	60.2	60.2
3-4 AM	96	0.0	OFF	96	0	0.00	0	60.2	60.2	60.2
4-5 AM	103	0.0	OFF	103	0	0.00	0	60.2	60.2	60.2
5-6 AM	201	0.0	OFF	201	0	0.00	0	60.2	60.2	60.2
6-7 AM	708	0.0	OFF	708	0	0.00	0	60.2	60.2	60.2
7-8 AM	1959	0.0	OFF	1959	0	0.00	0	60.2	60.2	60.2
8-9 AM	3661	0.0	OFF	3661	0	0.00	0	49.0	49.0	49.0
9-10 AM	3039	0.0	OFF	3039	0	0.00	0	55.4	55.4	55.4
10-11 AM	2080	0.0	1499	1869	211	10.66+	292	60.2	13.2	30.8
11AM-NOON	2063	0.0	1499	1504	560	16.24+	413	60.2	9.9	30.8
NOON-1PM	2513	0.0	1500	1513	1001	16.30+	415	60.2	9.9	30.8
1-2 PM	2650	0.0	1500	1513	1137	16.27+	415	59.4	9.9	30.8
2-3 PM	2549	0.0	1500	1504	1045	16.27+	414	60.2	9.9	30.8
3-4 PM	2791	0.0	OFF	2791	0	1.23	67	57.9	40.7	40.7
4-5 PM	3445	0.0	OFF	3445	0	0.00	0	51.2	51.2	51.2
5-6 PM	4178	0.0	OFF	4178	0	0.00	0	43.7	43.7	43.7
6-7 PM	3738	0.0	OFF	3738	0	0.00	0	48.2	48.2	48.2
7-8 PM	2497	0.0	OFF	2497	0	0.00	0	60.2	60.2	60.2
8-9 PM	1758	0.0	OFF	1758	0	0.00	0	60.2	60.2	60.2
9-10 PM	1428	0.0	OFF	1428	0	0.00	0	60.2	60.2	60.2
10-11 PM	1125	0.0	OFF	1125	0	0.00	0	60.2	60.2	60.2
11PM-MID	714	0.0	OFF	714	0	0.00	0	60.2	60.2	60.2

"OFF" INDICATES NO ROAD WORK (ALL LANES OPEN TO TRAFFIC)

+ INDICATES QUEUEING EXCEEDS USER-SPECIFIED MAXIMUM LIMIT

----- SITE BREAKDOWN DELAYS -----	
BREAKDOWN DURATION (MINS)	0
RANGE OF QUEUE DELAY - MIN (VEH-H) MAX	0.0
AV BREAKDOWNS PER DAY	0.00
AV QUEUE DELAY/DAY (VEH-H)	0.0
AV TOTAL DELAY/DAY (VEH-H)	0.0

----- SITE ACCIDENT DELAYS -----	
BREAKDOWN DURATION (MINS)	0
RANGE OF QUEUE DELAY - MIN (VEH-H) MAX	0
AV BREAKDOWNS PER DAY	0
AV QUEUE DELAY/DAY (VEH-H)	0
AV TOTAL DELAY/DAY (VEH-H)	0

AVERAGE ACCIDENT NUMBERS (PIA/DAY)	
MAIN ROUTE WITHOUT WORKS	0.0196
MAIN ROUTE WITH WORKS	0.0174
'DIVERSION'	0.0041

PIA: Personal Injury Accidents

ECONOMIC IMPACT ON ROAD USERS	
ROAD USER COSTS PER DAY	\$39,854
CONGESTED HOURS PER DAY*	5

*Delays Exceeding User-Specified Maximum

**USH 12/14: GAMMON RD TO VERONA RD (DANE COUNTY)
OFF-PEAK DAY CLOSURE
NO DIVERSION ROUTE (MAX QUEUE METHOD)**

OCTOBER

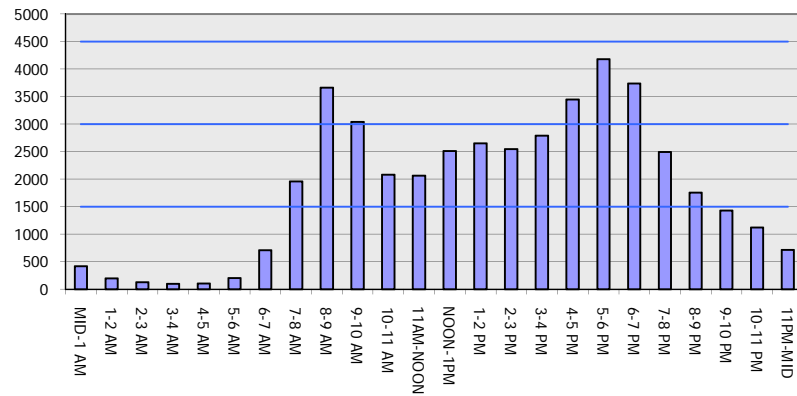
Analyzed for 2009
Construction Season

GRAPHICAL REPRESENTATION OF TRAFFIC MODEL INPUT AND OUTPUT

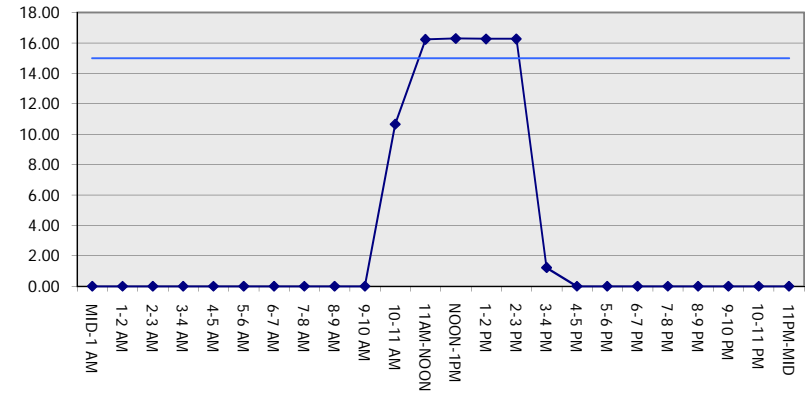
MON-THUR

EASTBOUND DIRECTION

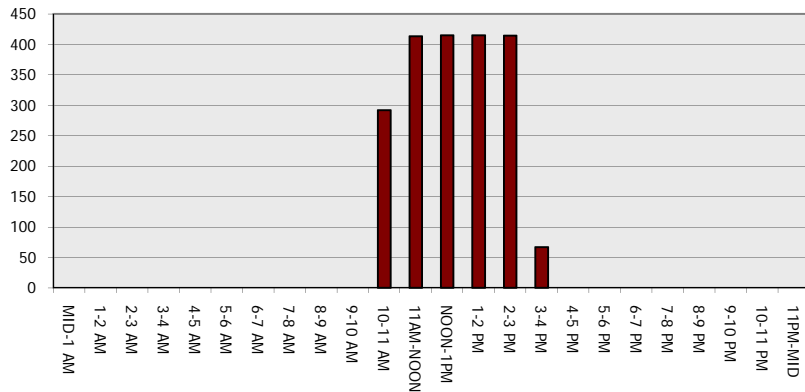
Main Route - Traffic Demand (Vehicles Per Hour)



Main Route Average Delay Per Vehicle (Minutes)



Main Route - Average Queue Length (Vehicles)



Main Route - Average Speed (MPH)

