

USH 12/14: GAMMON RD TO VERONA RD (DANE COUNTY) OFF-PEAK DAY CLOSURE NO DIVERSION ROUTE (MAX QUEUE METHOD)	OCTOBER
	Analyzed for 2009 Construction Season

SUMMARY OF TRAFFIC MODEL OUTPUT

FRIDAY WESTBOUND DIRECTION

TIME OF DAY	FLOWS AND CAPACITY IN VEH/HR						AVERAGE SPEEDS IN MPH				
	MAIN ROUTE		SITE CAPA CITY	FLOW		AV.DEL PER VEH (MINS)	AVERAGE QUEUE (VEH)	MAIN ROUTE		SITE	
	DEMAND FLOW	PCT HEAVY		MAIN ROUTE	'DIVER TED'			WITHOUT WORK ZONE	WITH WORK ZONE		
MID-1 AM	397	0.0	OFF	397	0	0.00	0	60.2	60.2	60.2	
1-2 AM	230	0.0	OFF	230	0	0.00	0	60.2	60.2	60.2	
2-3 AM	160	0.0	OFF	160	0	0.00	0	60.2	60.2	60.2	
3-4 AM	105	0.0	OFF	105	0	0.00	0	60.2	60.2	60.2	
4-5 AM	128	0.0	OFF	128	0	0.00	0	60.2	60.2	60.2	
5-6 AM	216	0.0	OFF	216	0	0.00	0	60.2	60.2	60.2	
6-7 AM	661	0.0	OFF	661	0	0.00	0	60.2	60.2	60.2	
7-8 AM	2111	0.0	OFF	2111	0	0.00	0	60.2	60.2	60.2	
8-9 AM	3991	0.0	OFF	3991	0	0.00	0	45.6	45.6	45.6	
9-10 AM	3276	0.0	OFF	3276	0	0.00	0	52.9	52.9	52.9	
10-11 AM	2409	0.0	1499	1962	446	12.79+	331	60.2	11.4	30.9	
11AM-NOON	2473	0.0	1499	1489	984	16.30+	415	60.2	9.9	30.8	
NOON-1PM	2795	0.0	1499	1481	1314	16.26+	417	57.9	9.8	30.8	
1-2 PM	3037	0.0	1499	1493	1544	16.22+	420	55.4	9.8	30.8	
2-3 PM	3000	0.0	1499	1497	1503	16.22+	420	55.8	9.8	30.8	
3-4 PM	3243	0.0	OFF	3243	0	2.04	117	53.3	32.4	32.4	
4-5 PM	3576	0.0	OFF	3576	0	0.00	0	49.9	49.9	49.9	
5-6 PM	4057	0.0	OFF	4057	0	0.00	0	45.0	45.0	45.0	
6-7 PM	3890	0.0	OFF	3890	0	0.00	0	46.6	46.6	46.6	
7-8 PM	2729	0.0	OFF	2729	0	0.00	0	58.6	58.6	58.6	
8-9 PM	1945	0.0	OFF	1945	0	0.00	0	60.2	60.2	60.2	
9-10 PM	1503	0.0	OFF	1503	0	0.00	0	60.2	60.2	60.2	
10-11 PM	1328	0.0	OFF	1328	0	0.00	0	60.2	60.2	60.2	
11PM-MID	952	0.0	OFF	952	0	0.00	0	60.2	60.2	60.2	

"OFF" INDICATES NO ROAD WORK (ALL LANES OPEN TO TRAFFIC)

+ INDICATES QUEUEING EXCEEDS USER-SPECIFIED MAXIMUM LIMIT

----- SITE BREAKDOWN DELAYS -----	
BREAKDOWN DURATION (MINS)	0
RANGE OF QUEUE DELAY - MIN (VEH-H) MAX	0.0
AV BREAKDOWNS PER DAY	0.00
AV QUEUE DELAY/DAY (VEH-H)	0.0
AV TOTAL DELAY/DAY (VEH-H)	0.0

----- SITE ACCIDENT DELAYS -----	
BREAKDOWN DURATION (MINS)	0
RANGE OF QUEUE DELAY - MIN (VEH-H) MAX	0
AV BREAKDOWNS PER DAY	0
AV QUEUE DELAY/DAY (VEH-H)	0
AV TOTAL DELAY/DAY (VEH-H)	0

AVERAGE ACCIDENT NUMBERS (PIA/DAY)	
MAIN ROUTE WITHOUT WORKS	0.0215
MAIN ROUTE WITH WORKS	0.0184
'DIVERSION'	0.0060
PIA: Personal Injury Accidents	
IMPACTS ON ROAD USERS	
ROAD USER COSTS PER DAY	\$48,099
CONGESTED HOURS PER DAY*	5

*Delays Exceeding User-Specified Maximum

**USH 12/14: GAMMON RD TO VERONA RD (DANE COUNTY)
OFF-PEAK DAY CLOSURE
NO DIVERSION ROUTE (MAX QUEUE METHOD)**

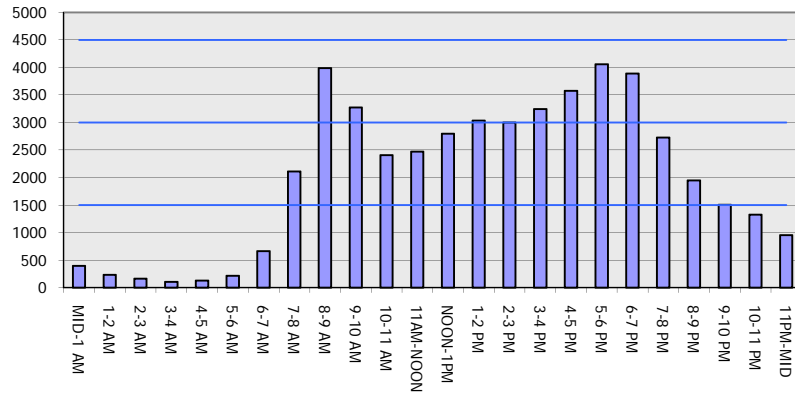
OCTOBER

Analyzed for 2009
Construction Season

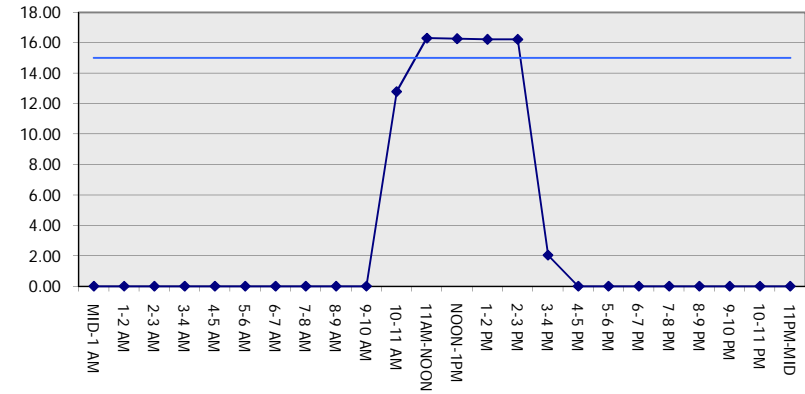
GRAPHICAL REPRESENTATION OF TRAFFIC MODEL INPUT AND OUTPUT

FRIDAY WESTBOUND DIRECTION

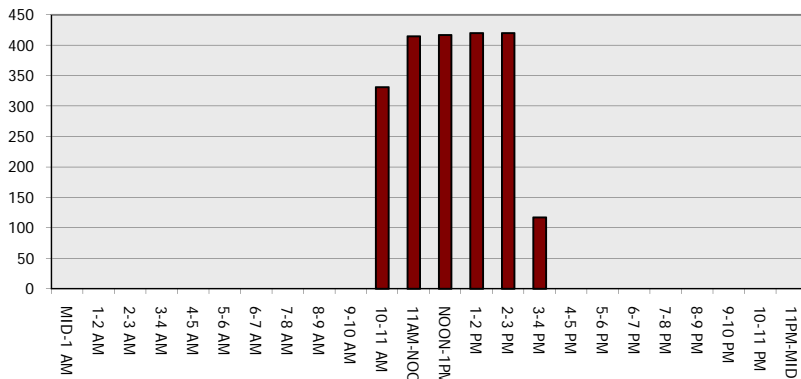
Main Route - Traffic Demand (Vehicles Per Hour)



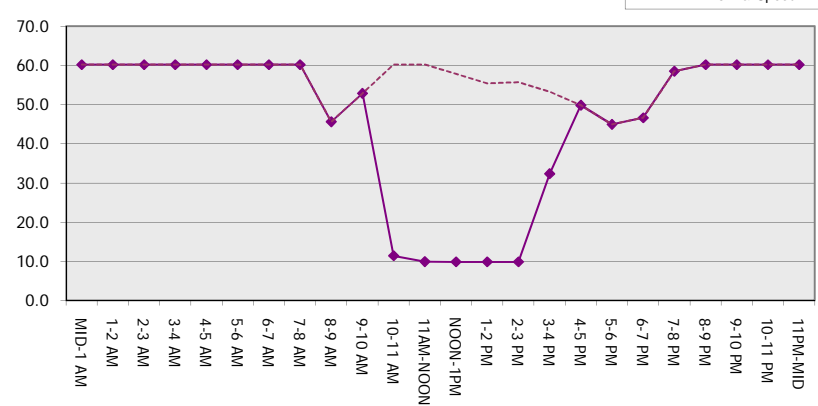
Main Route Average Delay Per Vehicle (Minutes)



Main Route - Average Queue Length (Vehicles)



Main Route - Average Speed (MPH)



USH 12/14: GAMMON RD TO VERONA RD (DANE COUNTY) OFF-PEAK DAY CLOSURE NO DIVERSION ROUTE (MAX QUEUE METHOD)	OCTOBER
	Analyzed for 2009 Construction Season

SUMMARY OF TRAFFIC MODEL OUTPUT

FRIDAY EASTBOUND DIRECTION

TIME OF DAY	FLOWS AND CAPACITY IN VEH/HR						AVERAGE SPEEDS IN MPH			
	MAIN ROUTE		SITE CAPA CITY	FLOW		AV.DEL PER VEH (MINS)	AVERAGE QUEUE (VEH)	MAIN ROUTE		SITE
	DEMAND FLOW	PCT HEAVY		MAIN ROUTE	'DIVER TED'			WITHOUT WORK ZONE	WITH WORK ZONE	
MID-1 AM	561	0.0	OFF	561	0	0.00	0	60.2	60.2	60.2
1-2 AM	280	0.0	OFF	280	0	0.00	0	60.2	60.2	60.2
2-3 AM	165	0.0	OFF	165	0	0.00	0	60.2	60.2	60.2
3-4 AM	113	0.0	OFF	113	0	0.00	0	60.2	60.2	60.2
4-5 AM	122	0.0	OFF	122	0	0.00	0	60.2	60.2	60.2
5-6 AM	197	0.0	OFF	197	0	0.00	0	60.2	60.2	60.2
6-7 AM	658	0.0	OFF	658	0	0.00	0	60.2	60.2	60.2
7-8 AM	1832	0.0	OFF	1832	0	0.00	0	60.2	60.2	60.2
8-9 AM	3333	0.0	OFF	3333	0	0.00	0	52.4	52.4	52.4
9-10 AM	2932	0.0	OFF	2932	0	0.00	0	56.4	56.4	56.4
10-11 AM	2222	0.0	1499	1898	324	11.40+	306	60.2	12.5	30.8
11AM-NOON	2346	0.0	1500	1501	845	16.25+	414	60.2	9.9	30.8
NOON-1PM	2790	0.0	1500	1511	1279	16.23+	416	57.9	9.8	30.8
1-2 PM	3059	0.0	1500	1507	1552	16.21+	420	55.1	9.8	30.8
2-3 PM	3043	0.0	1500	1502	1541	16.22+	420	55.3	9.8	30.8
3-4 PM	3179	0.0	OFF	3179	0	1.88	107	53.9	33.7	33.7
4-5 PM	3646	0.0	OFF	3646	0	0.00	0	49.1	49.1	49.1
5-6 PM	4056	0.0	OFF	4056	0	0.00	0	45.0	45.0	45.0
6-7 PM	3493	0.0	OFF	3493	0	0.00	0	50.7	50.7	50.7
7-8 PM	2610	0.0	OFF	2610	0	0.00	0	59.7	59.7	59.7
8-9 PM	1908	0.0	OFF	1908	0	0.00	0	60.2	60.2	60.2
9-10 PM	1483	0.0	OFF	1483	0	0.00	0	60.2	60.2	60.2
10-11 PM	1366	0.0	OFF	1366	0	0.00	0	60.2	60.2	60.2
11PM-MID	1029	0.0	OFF	1029	0	0.00	0	60.2	60.2	60.2

"OFF" INDICATES NO ROAD WORK (ALL LANES OPEN TO TRAFFIC)

+ INDICATES QUEUEING EXCEEDS USER-SPECIFIED MAXIMUM LIMIT

----- SITE BREAKDOWN DELAYS -----	
BREAKDOWN DURATION (MINS)	0
RANGE OF QUEUE DELAY - MIN (VEH-H) MAX	0.0
AV BREAKDOWNS PER DAY	0.00
AV QUEUE DELAY/DAY (VEH-H)	0.0
AV TOTAL DELAY/DAY (VEH-H)	0.0

----- SITE ACCIDENT DELAYS -----	
BREAKDOWN DURATION (MINS)	0
RANGE OF QUEUE DELAY - MIN (VEH-H) MAX	0
AV BREAKDOWNS PER DAY	0
AV QUEUE DELAY/DAY (VEH-H)	0
AV TOTAL DELAY/DAY (VEH-H)	0

AVERAGE ACCIDENT NUMBERS (PIA/DAY)	
MAIN ROUTE WITHOUT WORKS	0.0207
MAIN ROUTE WITH WORKS	0.0177
'DIVERSION'	0.0057

PIA: Personal Injury Accidents

ECONOMIC IMPACT ON ROAD USERS	
ROAD USER COSTS PER DAY	\$46,479
CONGESTED HOURS PER DAY*	5

*Delays Exceeding User-Specified Maximum

**USH 12/14: GAMMON RD TO VERONA RD (DANE COUNTY)
OFF-PEAK DAY CLOSURE
NO DIVERSION ROUTE (MAX QUEUE METHOD)**

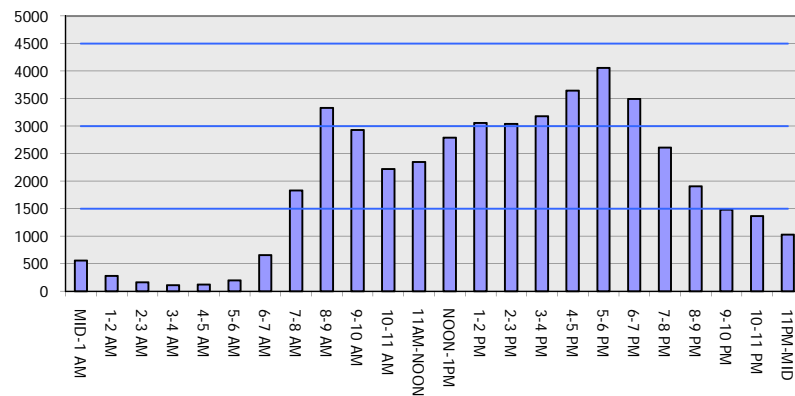
OCTOBER

Analyzed for 2009
Construction Season

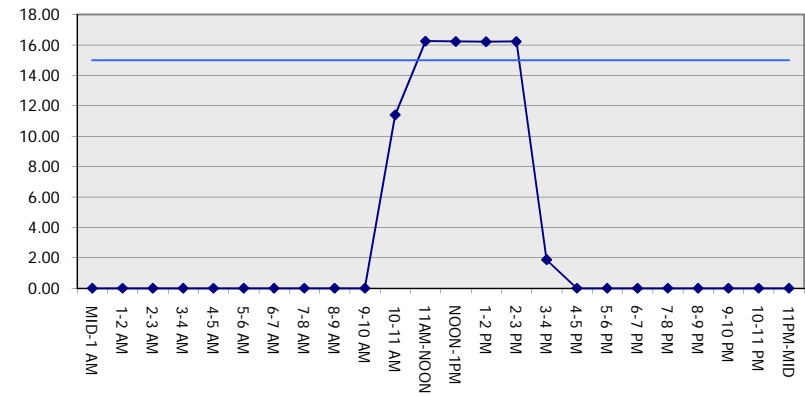
GRAPHICAL REPRESENTATION OF TRAFFIC MODEL INPUT AND OUTPUT

FRIDAY EASTBOUND DIRECTION

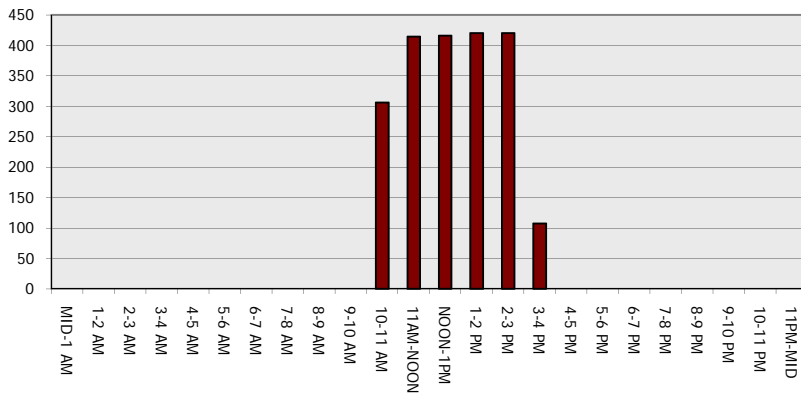
Main Route - Traffic Demand (Vehicles Per Hour)



Main Route Average Delay Per Vehicle (Minutes)



Main Route - Average Queue Length (Vehicles)



Main Route - Average Speed (MPH)

