

USH 12/14: GAMMON RD TO VERONA RD (DANE COUNTY) OFF-PEAK DAY CLOSURE NO DIVERSION ROUTE (MAX QUEUE METHOD)	AUGUST
	Analyzed for 2009 Construction Season

SUMMARY OF TRAFFIC MODEL OUTPUT

FRIDAY WESTBOUND DIRECTION

TIME OF DAY	FLOWS AND CAPACITY IN VEH/HR						AVERAGE SPEEDS IN MPH				
	MAIN ROUTE		SITE CAPA CITY	FLOW		AV.DEL PER VEH (MINS)	AVERAGE QUEUE (VEH)	MAIN ROUTE		SITE	
	DEMAND FLOW	PCT HEAVY		MAIN ROUTE	'DIVER TED'			WITHOUT WORK ZONE	WITH WORK ZONE		
MID-1 AM	409	0.0	OFF	409	0	0.00	0	60.2	60.2	60.2	
1-2 AM	264	0.0	OFF	264	0	0.00	0	60.2	60.2	60.2	
2-3 AM	179	0.0	OFF	179	0	0.00	0	60.2	60.2	60.2	
3-4 AM	130	0.0	OFF	130	0	0.00	0	60.2	60.2	60.2	
4-5 AM	106	0.0	OFF	106	0	0.00	0	60.2	60.2	60.2	
5-6 AM	212	0.0	OFF	212	0	0.00	0	60.2	60.2	60.2	
6-7 AM	692	0.0	OFF	692	0	0.00	0	60.2	60.2	60.2	
7-8 AM	2059	0.0	OFF	2059	0	0.00	0	60.2	60.2	60.2	
8-9 AM	3745	0.0	OFF	3745	0	0.00	0	48.1	48.1	48.1	
9-10 AM	3020	0.0	OFF	3020	0	0.00	0	55.6	55.6	55.6	
10-11 AM	2380	0.0	1499	1968	411	12.44+	325	60.2	11.7	30.8	
11AM-NOON	2500	0.0	1499	1486	1014	16.32+	415	60.2	9.9	30.8	
NOON-1PM	2851	0.0	1499	1479	1372	16.25+	418	57.3	9.8	30.8	
1-2 PM	3167	0.0	1499	1496	1671	16.19+	422	54.0	9.7	30.8	
2-3 PM	3141	0.0	1499	1497	1645	16.20+	422	54.3	9.7	30.8	
3-4 PM	3380	0.0	OFF	3380	0	2.49	146	51.9	29.3	29.3	
4-5 PM	3600	0.0	OFF	3600	0	0.00	0	49.6	49.6	49.6	
5-6 PM	3871	0.0	OFF	3871	0	0.00	0	46.8	46.8	46.8	
6-7 PM	3637	0.0	OFF	3637	0	0.00	0	49.2	49.2	49.2	
7-8 PM	2692	0.0	OFF	2692	0	0.00	0	58.9	58.9	58.9	
8-9 PM	2017	0.0	OFF	2017	0	0.00	0	60.2	60.2	60.2	
9-10 PM	1539	0.0	OFF	1539	0	0.00	0	60.2	60.2	60.2	
10-11 PM	1307	0.0	OFF	1307	0	0.00	0	60.2	60.2	60.2	
11PM-MID	932	0.0	OFF	932	0	0.00	0	60.2	60.2	60.2	

"OFF" INDICATES NO ROAD WORK (ALL LANES OPEN TO TRAFFIC)

+ INDICATES QUEUEING EXCEEDS USER-SPECIFIED MAXIMUM LIMIT

----- SITE BREAKDOWN DELAYS -----	
BREAKDOWN DURATION (MINS)	0
RANGE OF QUEUE DELAY - MIN	0.0
(VEH-H) MAX	0.0
AV BREAKDOWNS PER DAY	0.00
AV QUEUE DELAY/DAY (VEH-H)	0.0
AV TOTAL DELAY/DAY (VEH-H)	0.0

----- SITE ACCIDENT DELAYS -----	
BREAKDOWN DURATION (MINS)	0
RANGE OF QUEUE DELAY - MIN	0
(VEH-H) MAX	0
AV BREAKDOWNS PER DAY	0
AV QUEUE DELAY/DAY (VEH-H)	0
AV TOTAL DELAY/DAY (VEH-H)	0

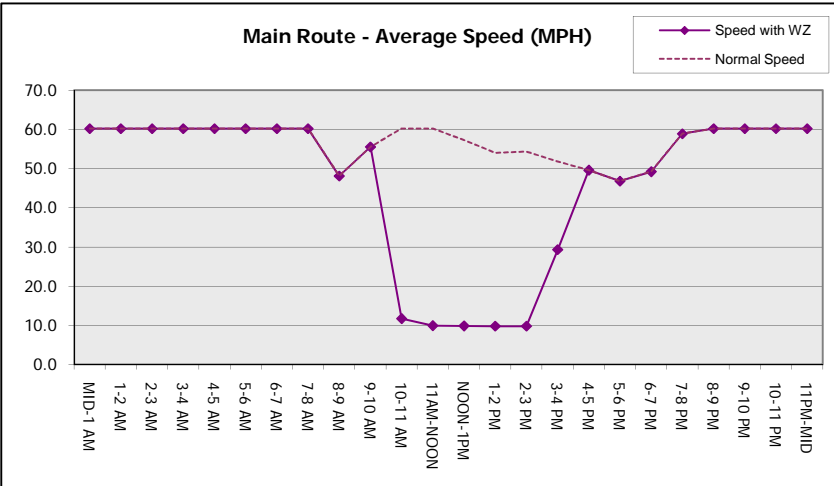
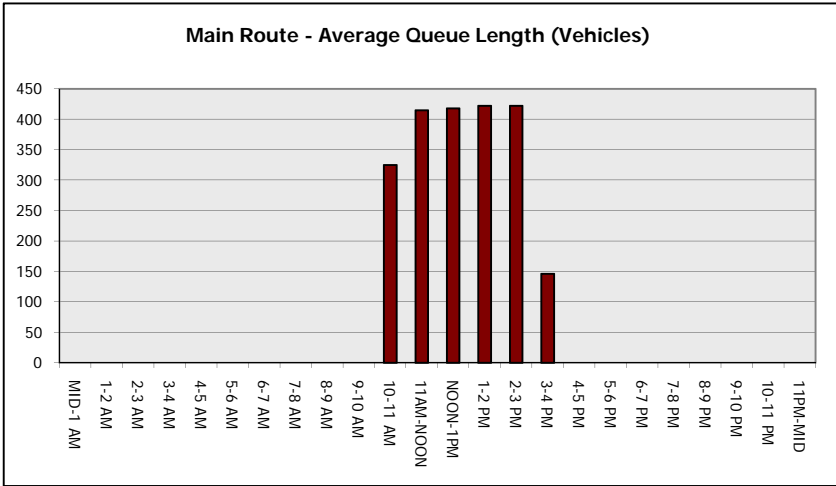
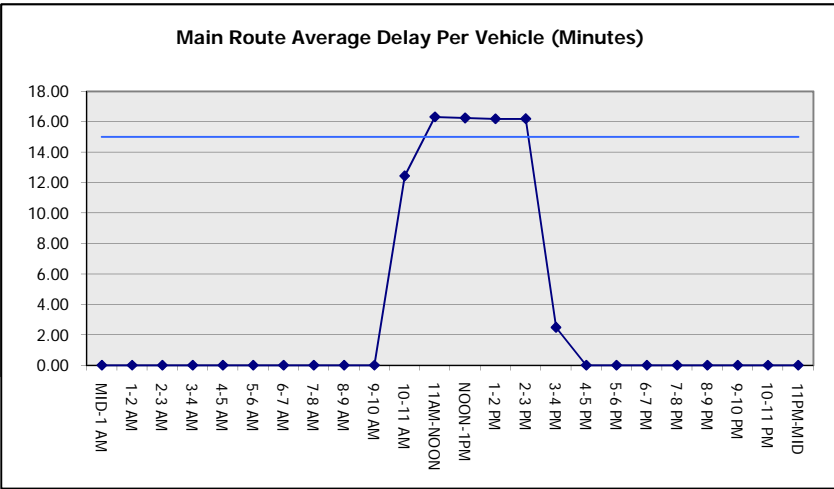
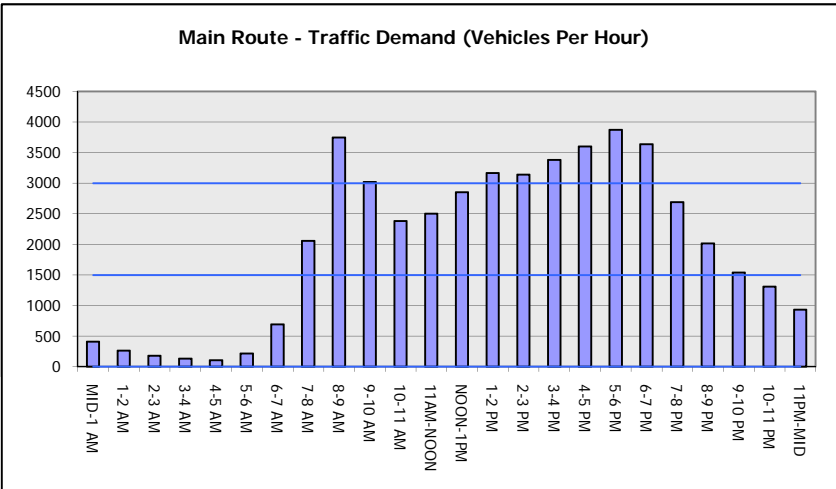
AVERAGE ACCIDENT NUMBERS (PIA/DAY)	
MAIN ROUTE WITHOUT WORKS	0.0213
MAIN ROUTE WITH WORKS	0.0181
'DIVERSION'	0.0063
<small>PIA: Personal Injury Accidents</small>	
IMPACTS ON ROAD USERS	
ROAD USER COSTS PER DAY	\$49,393
CONGESTED HOURS PER DAY*	5

*Delays Exceeding User-Specified Maximum

**USH 12/14: GAMMON RD TO VERONA RD (DANE COUNTY)
OFF-PEAK DAY CLOSURE
NO DIVERSION ROUTE (MAX QUEUE METHOD)**

AUGUST
Analyzed for 2009
Construction Season

GRAPHICAL REPRESENTATION OF TRAFFIC MODEL INPUT AND OUTPUT
FRIDAY WESTBOUND DIRECTION



USH 12/14: GAMMON RD TO VERONA RD (DANE COUNTY) OFF-PEAK DAY CLOSURE NO DIVERSION ROUTE (MAX QUEUE METHOD)	AUGUST
	Analyzed for 2009 Construction Season

SUMMARY OF TRAFFIC MODEL OUTPUT

FRIDAY EASTBOUND DIRECTION

TIME OF DAY	FLOWS AND CAPACITY IN VEH/HR						AVERAGE SPEEDS IN MPH			
	MAIN ROUTE		SITE CAPA CITY	FLOW		AV.DEL PER VEH (MINS)	AVERAGE QUEUE (VEH)	MAIN ROUTE		SITE
	DEMAND FLOW	PCT HEAVY		MAIN ROUTE	'DIVER TED'			WITHOUT WORK ZONE	WITH WORK ZONE	
MID-1 AM	721	0.0	OFF	721	0	0.00	0	60.2	60.2	60.2
1-2 AM	318	0.0	OFF	318	0	0.00	0	60.2	60.2	60.2
2-3 AM	193	0.0	OFF	193	0	0.00	0	60.2	60.2	60.2
3-4 AM	129	0.0	OFF	129	0	0.00	0	60.2	60.2	60.2
4-5 AM	127	0.0	OFF	127	0	0.00	0	60.2	60.2	60.2
5-6 AM	194	0.0	OFF	194	0	0.00	0	60.2	60.2	60.2
6-7 AM	650	0.0	OFF	650	0	0.00	0	60.2	60.2	60.2
7-8 AM	1805	0.0	OFF	1805	0	0.00	0	60.2	60.2	60.2
8-9 AM	3102	0.0	OFF	3102	0	0.00	0	54.7	54.7	54.7
9-10 AM	2691	0.0	OFF	2691	0	0.00	0	58.9	58.9	58.9
10-11 AM	2225	0.0	1499	1884	340	11.18+	302	60.2	12.7	30.8
11AM-NOON	2362	0.0	1500	1504	858	16.26+	414	60.2	9.9	30.8
NOON-1PM	2887	0.0	1500	1519	1368	16.22+	418	56.9	9.8	30.8
1-2 PM	3146	0.0	1500	1506	1639	16.18+	421	54.3	9.8	30.8
2-3 PM	3083	0.0	1500	1505	1577	16.21+	421	54.9	9.8	30.8
3-4 PM	3180	0.0	OFF	3180	0	1.87	106	53.9	33.7	33.7
4-5 PM	3564	0.0	OFF	3564	0	0.00	0	50.0	50.0	50.0
5-6 PM	3636	0.0	OFF	3636	0	0.00	0	49.2	49.2	49.2
6-7 PM	3193	0.0	OFF	3193	0	0.00	0	53.8	53.8	53.8
7-8 PM	2390	0.0	OFF	2390	0	0.00	0	60.2	60.2	60.2
8-9 PM	1835	0.0	OFF	1835	0	0.00	0	60.2	60.2	60.2
9-10 PM	1594	0.0	OFF	1594	0	0.00	0	60.2	60.2	60.2
10-11 PM	1420	0.0	OFF	1420	0	0.00	0	60.2	60.2	60.2
11PM-MID	1046	0.0	OFF	1046	0	0.00	0	60.2	60.2	60.2

"OFF" INDICATES NO ROAD WORK (ALL LANES OPEN TO TRAFFIC)

+ INDICATES QUEUEING EXCEEDS USER-SPECIFIED MAXIMUM LIMIT

----- SITE BREAKDOWN DELAYS -----	
BREAKDOWN DURATION (MINS)	0
RANGE OF QUEUE DELAY - MIN	0.0
(VEH-H) MAX	0.0
AV BREAKDOWNS PER DAY	0.00
AV QUEUE DELAY/DAY (VEH-H)	0.0
AV TOTAL DELAY/DAY (VEH-H)	0.0

----- SITE ACCIDENT DELAYS -----	
BREAKDOWN DURATION (MINS)	0
RANGE OF QUEUE DELAY - MIN	0
(VEH-H) MAX	0
AV BREAKDOWNS PER DAY	0
AV QUEUE DELAY/DAY (VEH-H)	0
AV TOTAL DELAY/DAY (VEH-H)	0

AVERAGE ACCIDENT NUMBERS (PIA/DAY)	
MAIN ROUTE WITHOUT WORKS	0.0203
MAIN ROUTE WITH WORKS	0.0172
'DIVERSION'	0.0060

PIA: Personal Injury Accidents

ECONOMIC IMPACT ON ROAD USERS	
ROAD USER COSTS PER DAY	\$47,139
CONGESTED HOURS PER DAY*	5

*Delays Exceeding User-Specified Maximum

**USH 12/14: GAMMON RD TO VERONA RD (DANE COUNTY)
OFF-PEAK DAY CLOSURE
NO DIVERSION ROUTE (MAX QUEUE METHOD)**

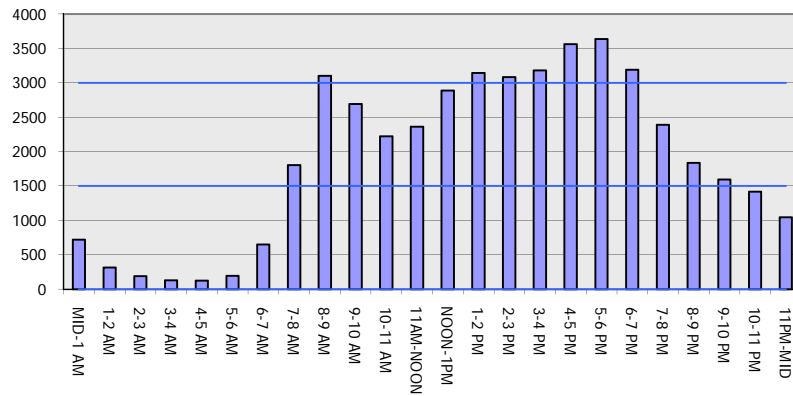
AUGUST

Analyzed for 2009
Construction Season

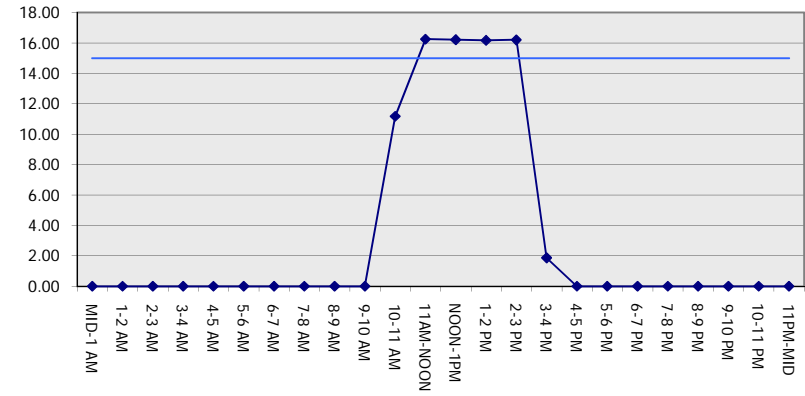
GRAPHICAL REPRESENTATION OF TRAFFIC MODEL INPUT AND OUTPUT

FRIDAY EASTBOUND DIRECTION

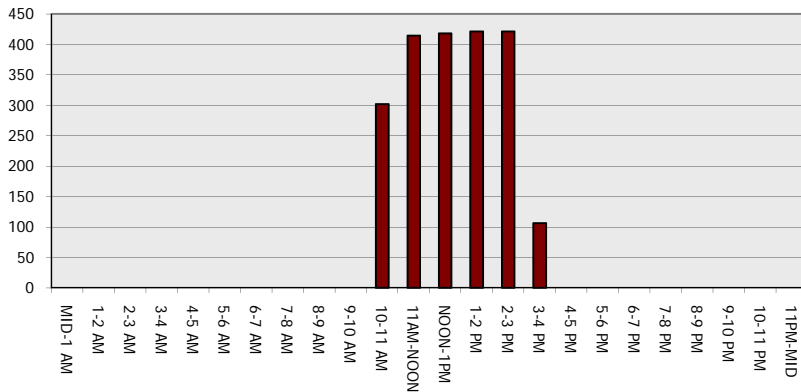
Main Route - Traffic Demand (Vehicles Per Hour)



Main Route Average Delay Per Vehicle (Minutes)



Main Route - Average Queue Length (Vehicles)



Main Route - Average Speed (MPH)

