

<b>USH 151: CTH PD TO CTH PB (DANE COUNTY)</b> <b>OFF-PEAK DAY CLOSURE</b> <b>NO DIVERSION ROUTE (MAX QUEUE METHOD)</b>	<b>OCTOBER</b>
	Analyzed for 2009 Construction Season

**SUMMARY OF TRAFFIC MODEL OUTPUT**

FRIDAY WESTBOUND DIRECTION

TIME OF DAY	FLOWS AND CAPACITY IN VEH/HR						AVERAGE SPEEDS IN MPH				
	MAIN ROUTE		SITE CAPA CITY	FLOW		AV.DEL PER VEH (MINS)	AVERAGE QUEUE (VEH)	MAIN ROUTE		SITE	
	DEMAND FLOW	PCT HEAVY		MAIN ROUTE	'DIVER TED'			WITHOUT WORK ZONE	WITH WORK ZONE		
MID-1 AM	95	0.0	OFF	95	0	0.00	0	66.2	66.2	66.2	
1-2 AM	80	0.0	OFF	80	0	0.00	0	66.3	66.3	66.3	
2-3 AM	78	0.0	OFF	78	0	0.00	0	66.3	66.3	66.3	
3-4 AM	112	0.0	OFF	112	0	0.00	0	66.2	66.2	66.2	
4-5 AM	271	0.0	OFF	271	0	0.00	0	65.9	65.9	65.9	
5-6 AM	573	0.0	OFF	573	0	0.00	0	65.3	65.3	65.3	
6-7 AM	969	0.0	OFF	969	0	0.00	0	64.6	64.6	64.6	
7-8 AM	1054	0.0	OFF	1054	0	0.00	0	64.4	64.4	64.4	
8-9 AM	846	0.0	OFF	846	0	0.00	0	64.8	64.8	64.8	
9-10 AM	893	0.0	OFF	893	0	0.00	0	64.7	64.7	64.7	
10-11 AM	1039	0.0	1500	1039	0	0.52	0	64.5	51.4	41.5	
11AM-NOON	1168	0.0	1500	1168	0	0.60	0	64.2	49.8	39.5	
NOON-1PM	1261	0.0	1499	1261	0	0.71	0	64.0	47.6	36.7	
1-2 PM	1612	0.0	1499	1612	0	2.28	40	63.4	30.2	30.8	
2-3 PM	1753	0.0	1500	1753	0	9.10	230	63.1	12.5	30.8	
3-4 PM	1873	0.0	OFF	1873	0	0.49	31	62.9	50.9	50.9	
4-5 PM	1769	0.0	OFF	1769	0	0.00	0	63.1	63.1	63.1	
5-6 PM	1407	0.0	OFF	1407	0	0.00	0	63.8	63.8	63.8	
6-7 PM	941	0.0	OFF	941	0	0.00	0	64.6	64.6	64.6	
7-8 PM	745	0.0	OFF	745	0	0.00	0	65.0	65.0	65.0	
8-9 PM	698	0.0	OFF	698	0	0.00	0	65.1	65.1	65.1	
9-10 PM	513	0.0	OFF	513	0	0.00	0	65.5	65.5	65.5	
10-11 PM	344	0.0	OFF	344	0	0.00	0	65.8	65.8	65.8	
11PM-MID	195	0.0	OFF	195	0	0.00	0	66.0	66.0	66.0	

**"OFF" INDICATES NO ROAD WORK (ALL LANES OPEN TO TRAFFIC)**

*----- SITE BREAKDOWN DELAYS -----*	
BREAKDOWN DURATION (MINS)	0
RANGE OF QUEUE DELAY - MIN (VEH-H) MAX	0.0
AV BREAKDOWNS PER DAY	0.00
AV QUEUE DELAY/DAY (VEH-H)	0.0
AV TOTAL DELAY/DAY (VEH-H)	0.0

*----- SITE ACCIDENT DELAYS -----*	
BREAKDOWN DURATION (MINS)	0
RANGE OF QUEUE DELAY - MIN (VEH-H) MAX	0
AV BREAKDOWNS PER DAY	0
AV QUEUE DELAY/DAY (VEH-H)	0
AV TOTAL DELAY/DAY (VEH-H)	0

AVERAGE ACCIDENT NUMBERS (PIA/DAY)	
MAIN ROUTE WITHOUT WORKS	0.0071
MAIN ROUTE WITH WORKS	0.0067
'DIVERSION'	0.0000
PIA: Personal Injury Accidents	
IMPACTS ON ROAD USERS	
ROAD USER COSTS PER DAY	\$4,290
CONGESTED HOURS PER DAY*	0

\*Delays Exceeding User-Specified Maximum

**USH 151: CTH PD TO CTH PB (DANE COUNTY)  
OFF-PEAK DAY CLOSURE  
NO DIVERSION ROUTE (MAX QUEUE METHOD)**

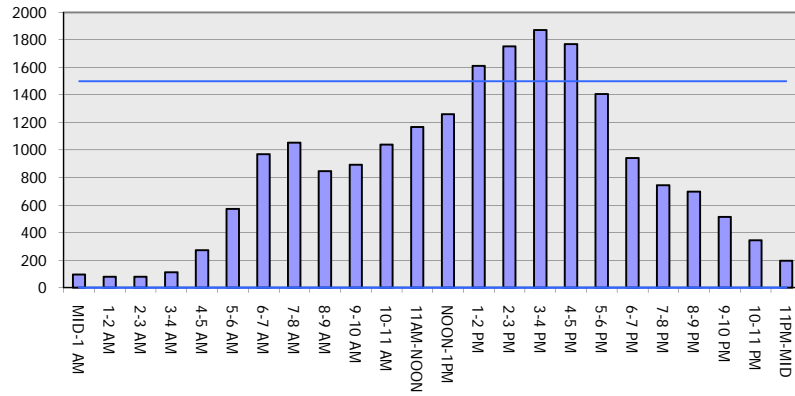
**OCTOBER**

Analyzed for 2009  
Construction Season

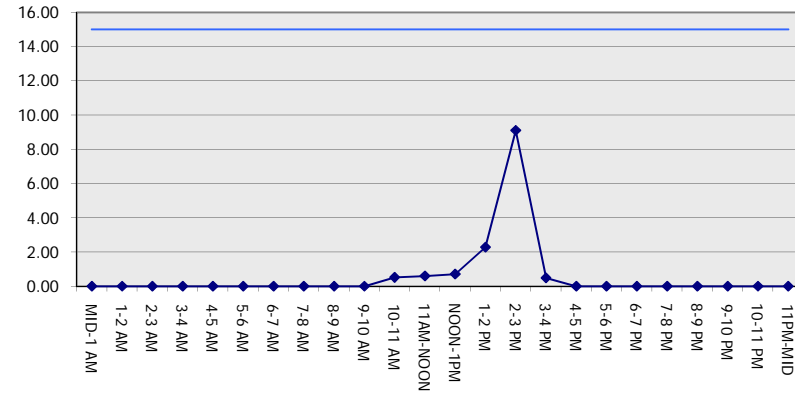
**GRAPHICAL REPRESENTATION OF TRAFFIC MODEL INPUT AND OUTPUT**

**FRIDAY WESTBOUND DIRECTION**

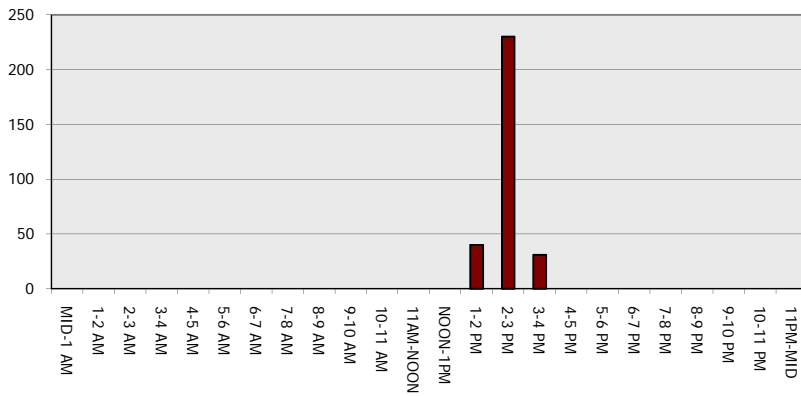
**Main Route - Traffic Demand (Vehicles Per Hour)**



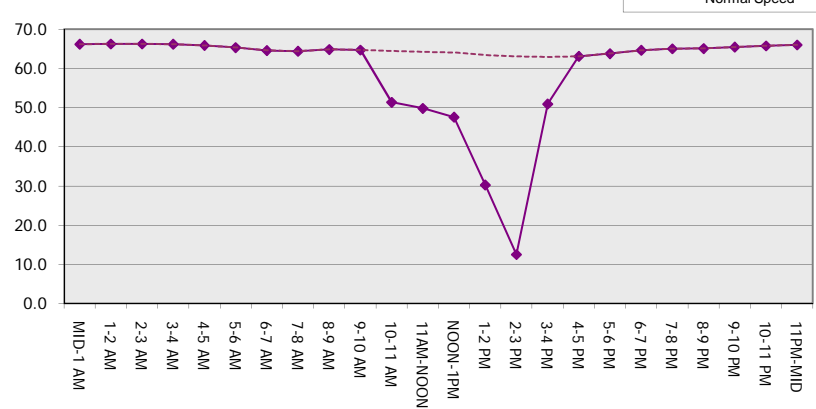
**Main Route Average Delay Per Vehicle (Minutes)**



**Main Route - Average Queue Length (Vehicles)**



**Main Route - Average Speed (MPH)**



<b>USH 151: CTH PD TO CTH PB (DANE COUNTY)                  OFF-PEAK DAY CLOSURE                  NO DIVERSION ROUTE (MAX QUEUE METHOD)</b>	<b>OCTOBER</b>
	Analyzed for 2009 Construction Season

**SUMMARY OF TRAFFIC MODEL OUTPUT**

FRIDAY EASTBOUND DIRECTION

TIME OF DAY	FLOWS AND CAPACITY IN VEH/HR						AVERAGE SPEEDS IN MPH			
	MAIN ROUTE		SITE CAPA CITY	FLOW		AV.DEL PER VEH (MINS)	AVERAGE QUEUE (VEH)	MAIN ROUTE		SITE
	DEMAND FLOW	PCT HEAVY		MAIN ROUTE	'DIVER TED'			WITHOUT WORK ZONE	WITH WORK ZONE	
MID-1 AM	68	0.0	OFF	68	0	0.00	0	66.3	66.3	66.3
1-2 AM	62	0.0	OFF	62	0	0.00	0	66.3	66.3	66.3
2-3 AM	104	0.0	OFF	104	0	0.00	0	66.2	66.2	66.2
3-4 AM	222	0.0	OFF	222	0	0.00	0	66.0	66.0	66.0
4-5 AM	751	0.0	OFF	751	0	0.00	0	65.0	65.0	65.0
5-6 AM	1538	0.0	OFF	1538	0	0.00	0	63.5	63.5	63.5
6-7 AM	1724	0.0	OFF	1724	0	0.00	0	63.2	63.2	63.2
7-8 AM	1473	0.0	OFF	1473	0	0.00	0	63.7	63.7	63.7
8-9 AM	1096	0.0	OFF	1096	0	0.00	0	64.3	64.3	64.3
9-10 AM	1065	0.0	OFF	1065	0	0.00	0	64.4	64.4	64.4
10-11 AM	1132	0.0	1500	1132	0	0.55	0	64.3	50.7	40.7
11AM-NOON	1123	0.0	1500	1123	0	0.54	0	64.3	51.0	41.1
NOON-1PM	1188	0.0	1500	1188	0	0.62	0	64.1	49.3	38.9
1-2 PM	1224	0.0	1500	1224	0	0.67	0	64.1	48.4	37.7
2-3 PM	1330	0.0	1500	1330	0	0.80	0	63.9	46.0	34.7
3-4 PM	1343	0.0	OFF	1343	0	0.00	0	63.9	63.9	63.9
4-5 PM	1398	0.0	OFF	1398	0	0.00	0	63.8	63.8	63.8
5-6 PM	1126	0.0	OFF	1126	0	0.00	0	64.3	64.3	64.3
6-7 PM	715	0.0	OFF	715	0	0.00	0	65.1	65.1	65.1
7-8 PM	513	0.0	OFF	513	0	0.00	0	65.5	65.5	65.5
8-9 PM	472	0.0	OFF	472	0	0.00	0	65.5	65.5	65.5
9-10 PM	376	0.0	OFF	376	0	0.00	0	65.7	65.7	65.7
10-11 PM	218	0.0	OFF	218	0	0.00	0	66.0	66.0	66.0
11PM-MID	135	0.0	OFF	135	0	0.00	0	66.1	66.1	66.1

"OFF" INDICATES NO ROAD WORK (ALL LANES OPEN TO TRAFFIC)

*----- SITE BREAKDOWN DELAYS -----*	
BREAKDOWN DURATION (MINS)	0
RANGE OF QUEUE DELAY - MIN (VEH-H) MAX	0.0
AV BREAKDOWNS PER DAY	0.00
AV QUEUE DELAY/DAY (VEH-H)	0.0
AV TOTAL DELAY/DAY (VEH-H)	0.0

*----- SITE ACCIDENT DELAYS -----*	
BREAKDOWN DURATION (MINS)	0
RANGE OF QUEUE DELAY - MIN (VEH-H) MAX	0
AV BREAKDOWNS PER DAY	0
AV QUEUE DELAY/DAY (VEH-H)	0
AV TOTAL DELAY/DAY (VEH-H)	0

AVERAGE ACCIDENT NUMBERS (PIA/DAY)	
MAIN ROUTE WITHOUT WORKS	0.0071
MAIN ROUTE WITH WORKS	0.0067
'DIVERSION'	0.0000

PIA: Personal Injury Accidents

ECONOMIC IMPACT ON ROAD USERS	
ROAD USER COSTS PER DAY	\$728
CONGESTED HOURS PER DAY*	0

\*Delays Exceeding User-Specified Maximum

**USH 151: CTH PD TO CTH PB (DANE COUNTY)  
OFF-PEAK DAY CLOSURE  
NO DIVERSION ROUTE (MAX QUEUE METHOD)**

**OCTOBER**

Analyzed for 2009  
Construction Season

**GRAPHICAL REPRESENTATION OF TRAFFIC MODEL INPUT AND OUTPUT  
FRIDAY EASTBOUND DIRECTION**

