

IH 39/90: STH 11 TO STATE LINE (ROCK COUNTY) CONTINUOUS (24 HOUR) CLOSURE DIVERSION ROUTE: IH 43 - STH 140 - USH 14 - STH 11	MAY
	Analyzed for 2009 Construction Season

SUMMARY OF TRAFFIC MODEL OUTPUT

MON-THUR WESTBOUND DIRECTION

TIME OF DAY	FLOWS AND CAPACITY IN VEH/HR								AVERAGE SPEEDS IN MPH						
	MAIN ROUTE		ALTERNATE ROUTE		SITE CAPA CITY	FLOW MAIN ROUTE	FLOW DIVER -TING	TOTAL DIVN FLOW	AV.DEL PER VEH (MINS)	AVERAGE QUEUE (VEH)	MAIN ROUTE		ALTERNATE ROUTE		
	DEMAND FLOW	PCT HEAVY	NORMAL FLOW	PCT HEAVY							WITHOUT WORK ZN	WITH WORK ZN	SITE	WITHOUT WORK ZN	WITH WORK ZN
MID-1 AM	323	0.0	47	0.0	1500	323	0	47	0.45	0	65.8	62.7	44.2	39.2	39.2
1-2 AM	276	0.0	40	0.0	1500	276	0	40	0.45	0	65.9	62.8	44.4	39.2	39.2
2-3 AM	294	0.0	43	0.0	1500	294	0	43	0.45	0	65.8	62.7	44.3	39.2	39.2
3-4 AM	302	0.0	44	0.0	1500	302	0	44	0.45	0	65.8	62.7	44.3	39.2	39.2
4-5 AM	460	0.0	67	0.0	1500	460	0	67	0.47	0	65.5	62.3	43.7	38.9	38.9
5-6 AM	955	0.0	139	0.0	1500	955	0	139	0.51	0	64.6	61.2	41.9	38.0	38.0
6-7 AM	1308	0.0	190	0.0	1500	1308	0	190	0.78	0	64.0	59.1	35.3	37.4	37.4
7-8 AM	1279	0.0	185	0.0	1500	1279	0	185	0.74	0	64.0	59.3	36.1	37.4	37.4
8-9 AM	1181	0.0	172	0.0	1500	1181	0	172	0.61	0	64.2	60.2	39.1	37.6	37.6
9-10 AM	1202	0.0	175	0.0	1500	1202	0	175	0.64	0	64.1	60.1	38.4	37.6	37.6
10-11 AM	1317	0.0	191	0.0	1500	1317	0	191	0.79	0	64.0	59.0	35.0	37.4	37.4
11A-NOON	1348	0.0	196	0.0	1500	1348	0	196	0.83	0	63.9	58.7	34.3	37.3	37.3
NOON-1PM	1341	0.0	195	0.0	1500	1341	0	195	0.82	0	63.9	58.7	34.4	37.3	37.3
1-2 PM	1401	0.0	204	0.0	1500	1401	0	204	0.90	0	63.8	58.2	33.0	37.2	37.2
2-3 PM	1416	0.0	206	0.0	1500	1416	0	206	0.92	0	63.8	58.1	32.6	37.2	37.2
3-4 PM	1451	0.0	211	0.0	1500	1451	0	211	0.96	0	63.7	57.8	31.8	37.1	37.1
4-5 PM	1372	0.0	200	0.0	1500	1372	0	200	0.86	0	63.8	58.5	33.7	37.3	37.3
5-6 PM	1208	0.0	175	0.0	1500	1208	0	175	0.65	0	64.1	60.0	38.2	37.6	37.6
6-7 PM	998	0.0	145	0.0	1500	998	0	145	0.52	0	64.5	61.1	41.7	37.9	37.9
7-8 PM	933	0.0	136	0.0	1500	933	0	136	0.51	0	64.6	61.2	41.9	38.1	38.1
8-9 PM	873	0.0	127	0.0	1500	873	0	127	0.51	0	64.8	61.4	42.1	38.2	38.2
9-10 PM	720	0.0	105	0.0	1500	720	0	105	0.49	0	65.0	61.7	42.7	38.4	38.4
10-11 PM	565	0.0	82	0.0	1500	565	0	82	0.48	0	65.3	62.1	43.3	38.8	38.8
11PM-MID	368	0.0	54	0.0	1500	368	0	54	0.46	0	65.7	62.5	44.0	39.1	39.1

----- SITE BREAKDOWN DELAYS -----	
BREAKDOWN DURATION (MINS)	0
RANGE OF QUEUE DELAY - MIN	0.0
(VEH-H) MAX	0.0
RANGE OF DIVN DELAY - MIN	0.0
(VEH-H) MAX	0.0
AV BREAKDOWNS PER DAY	0.00
AV QUEUE DELAY/DAY (VEH-H)	0.0
AV DIVN DELAY/DAY (VEH-H)	0.0
AV TOTAL DELAY/DAY (VEH-H)	0.0

----- SITE ACCIDENT DELAYS -----	
ACCIDENT DURATION (MINS)	0
RANGE OF QUEUE DELAY - MIN	0.0
(VEH-H) MAX	0.0
RANGE OF DIVN DELAY - MIN	0.0
(VEH-H) MAX	0.0
AV ACCIDENTS PER DAY	0.00
AV QUEUE DELAY/DAY (VEH-H)	0.0
AV DIVN DELAY/DAY (VEH-H)	0.0
AV TOTAL DELAY/DAY (VEH-H)	0.0

AVERAGE ACCIDENT NUMBERS (PIA/DAY)	
MAIN ROUTE WITHOUT WORKS	0.0364
MAIN ROUTE WITH WORKS	0.0349
DIVERSION	0.0743

PIA: Personal Injury Accidents

IMPACTS ON ROAD USERS	
ROAD USER COSTS PER DAY (DOLLARS)	\$3,477
CONGESTED HOURS PER DAY*	0

*Delays Exceeding 15 Minutes

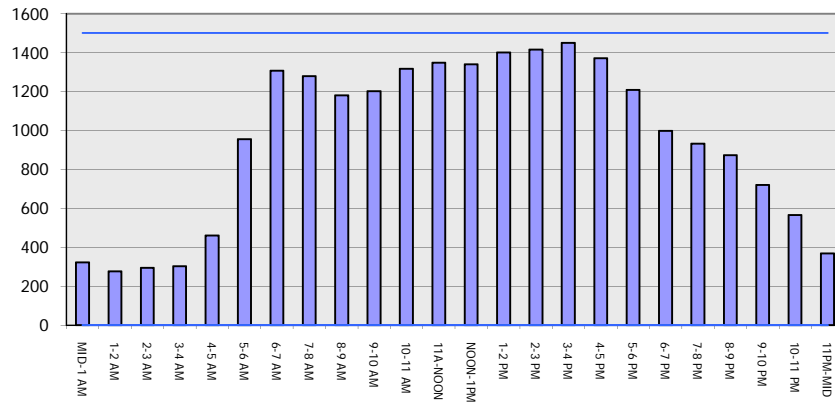
**IH 39/90: STH 11 TO STATE LINE (ROCK COUNTY)
 CONTINUOUS (24 HOUR) CLOSURE
 DIVERSION ROUTE: IH 43 - STH 140 - USH 14 - STH 11**

MAY
 Analyzed for 2009
 Construction Season

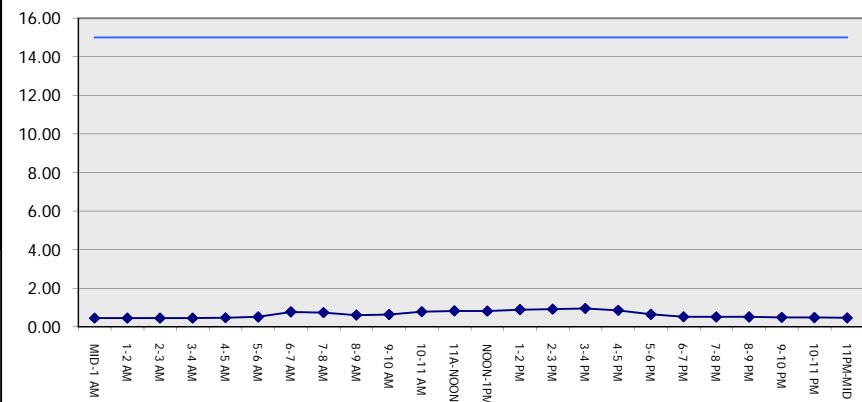
GRAPHICAL REPRESENTATION OF TRAFFIC MODEL INPUT AND OUTPUT

MON-THUR WESTBOUND DIRECTION

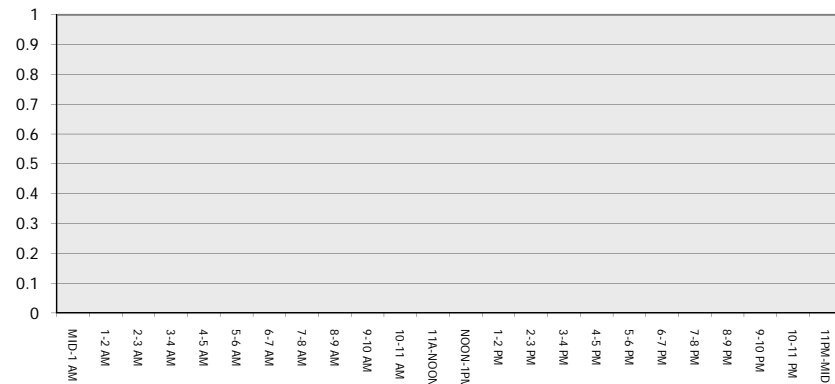
Main Route - Traffic Demand (Vehicles Per Hour)



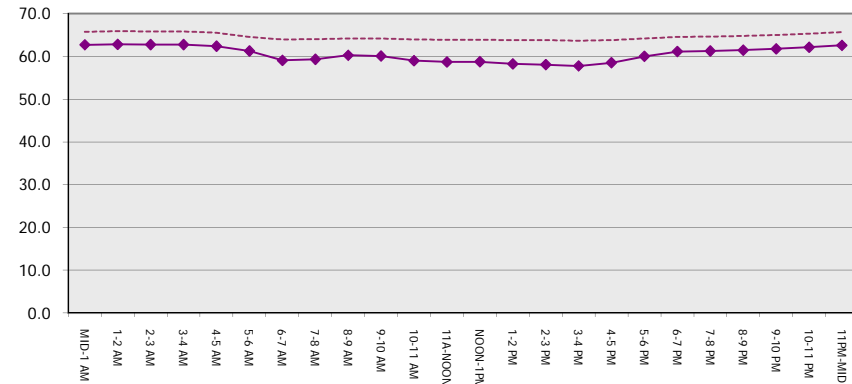
Main Route Average Delay Per Vehicle (Minutes)



Main Route - Average Queue Length (Vehicles)



Main Route - Average Speed (MPH)



IH 39/90: STH 11 TO STATE LINE (ROCK COUNTY) CONTINUOUS (24 HOUR) CLOSURE DIVERSION ROUTE: IH 43 - STH 140 - USH 14 - STH 11	MAY
	Analyzed for 2009 Construction Season

SUMMARY OF TRAFFIC MODEL OUTPUT

MON-THUR EASTBOUND DIRECTION

TIME OF DAY	FLOWS AND CAPACITY IN VEH/HR							AVERAGE SPEEDS IN MPH			AVERAGE SPEEDS IN MPH				
	MAIN		DIVERSION		SITE CAPA CITY	FLOW MAIN ROUTE	FLOW DIVER -TING	TOTAL DIVN FLOW	AV.DEL PER VEH (MINS)	AVERAGE QUEUE (VEH)	MAIN ROUTE		ALTERNATE ROUTE		
	DEMAND FLOW	PCT HEAVY	NORMAL FLOW	PCT HEAVY							WITHOUT WORK ZN	WITH WORK ZN	SITE	WITHOUT WORK ZN	WITH WORK ZN
MID-1 AM	311	0.0	45	0.0	1500	311	0	45	0.45	0	65.8	62.7	44.2	39.2	39.2
1-2 AM	265	0.0	38	0.0	1500	265	0	38	0.45	0	65.9	62.8	44.4	39.2	39.2
2-3 AM	286	0.0	41	0.0	1500	286	0	41	0.45	0	65.8	62.7	44.3	39.2	39.2
3-4 AM	330	0.0	48	0.0	1500	330	0	48	0.45	0	65.8	62.7	44.2	39.1	39.1
4-5 AM	423	0.0	62	0.0	1500	423	0	62	0.46	0	65.6	62.4	43.8	39.0	39.0
5-6 AM	582	0.0	84	0.0	1500	582	0	84	0.48	0	65.3	62.0	43.2	38.7	38.7
6-7 AM	858	0.0	125	0.0	1500	858	0	125	0.51	0	64.8	61.4	42.2	38.2	38.2
7-8 AM	1088	0.0	157	0.0	1500	1088	0	157	0.53	0	64.3	60.9	41.4	37.8	37.8
8-9 AM	1160	0.0	169	0.0	1500	1160	0	169	0.59	0	64.2	60.4	39.7	37.6	37.6
9-10 AM	1228	0.0	178	0.0	1500	1228	0	178	0.67	0	64.1	59.8	37.6	37.5	37.5
10-11 AM	1329	0.0	194	0.0	1500	1329	0	194	0.80	0	63.9	58.9	34.7	37.3	37.3
11A-NOON	1411	0.0	205	0.0	1500	1411	0	205	0.91	0	63.8	58.1	32.7	37.2	37.2
NOON-1PM	1466	0.0	213	0.0	1499	1466	0	213	0.98	0	63.7	57.6	31.5	37.1	37.1
1-2 PM	1509	0.0	219	0.0	1499	1509	0	219	1.13	3	63.6	56.8	30.9	37.0	37.0
2-3 PM	1589	0.0	231	0.0	1500	1589	0	231	2.87	51	63.4	48.6	30.8	36.9	36.9
3-4 PM	1673	0.0	243	0.0	1500	1673	0	243	7.67	184	63.3	35.0	30.8	36.7	36.7
4-5 PM	1696	0.0	246	0.0	1500	1696	0	246	14.71	374	63.2	24.8	30.8	36.7	36.7
5-6 PM	1603	0.0	233	0.0	1499	1592	11	243	20.71	532	63.4	19.9	30.8	36.8	36.7
6-7 PM	1311	0.0	190	0.0	1499	1311	0	190	18.92	485	64.0	21.2	30.8	37.4	37.4
7-8 PM	1064	0.0	154	0.0	1499	1064	0	154	5.85	172	64.4	39.6	36.2	37.8	37.8
8-9 PM	936	0.0	136	0.0	1500	936	0	136	0.51	0	64.6	61.2	41.9	38.1	38.1
9-10 PM	797	0.0	115	0.0	1500	797	0	115	0.50	0	64.9	61.5	42.4	38.3	38.3
10-11 PM	597	0.0	86	0.0	1500	597	0	86	0.48	0	65.3	62.0	43.2	38.7	38.7
11PM-MID	392	0.0	57	0.0	1500	392	0	57	0.46	0	65.6	62.5	43.9	39.1	39.1

----- SITE BREAKDOWN DELAYS -----	
BREAKDOWN DURATION (MINS)	0
RANGE OF QUEUE DELAY - MIN	0.0
(VEH-H) MAX	0.0
RANGE OF DIVN DELAY - MIN	0.0
(VEH-H) MAX	0.0
AV BREAKDOWNS PER DAY	0.00
AV QUEUE DELAY/DAY (VEH-H)	0.0
AV DIVN DELAY/DAY (VEH-H)	0.0
AV TOTAL DELAY/DAY (VEH-H)	0.0

----- SITE ACCIDENT DELAYS -----	
ACCIDENT DURATION (MINS)	0
RANGE OF QUEUE DELAY - MIN	0.0
(VEH-H) MAX	0.0
RANGE OF DIVN DELAY - MIN	0.0
(VEH-H) MAX	0.0
AV ACCIDENTS PER DAY	0.00
AV QUEUE DELAY/DAY (VEH-H)	0.0
AV DIVN DELAY/DAY (VEH-H)	0.0
AV TOTAL DELAY/DAY (VEH-H)	0.0

AVERAGE ACCIDENT NUMBERS (PIA/DAY)	
MAIN ROUTE WITHOUT WORKS	0.0380
MAIN ROUTE WITH WORKS	0.0364
DIVERSION	0.0777

PIA: Personal Injury Accidents

IMPACTS ON ROAD USERS	
ROAD USER COSTS PER DAY (DOLLARS)	\$25,231
CONGESTED HOURS PER DAY*	2

*Delays Exceeding 15 Minutes

IH 39/90: STH 11 TO STATE LINE (ROCK COUNTY)
CONTINUOUS (24 HOUR) CLOSURE
DIVERSION ROUTE: IH 43 - STH 140 - USH 14 - STH 11

MAY
 Analyzed for 2009
 Construction Season

GRAPHICAL REPRESENTATION OF TRAFFIC MODEL INPUT AND OUTPUT
MON-THUR EASTBOUND DIRECTION

