

IH 94: USH 12 TO IH 90/94 (MONROE COUNTY) CONTINUOUS (24 HOUR) CLOSURE DIVERSION ROUTE: IH 90, USH 12	MAY
	Analyzed for 2009 Construction Season

SUMMARY OF TRAFFIC MODEL OUTPUT

SUNDAY WESTBOUND DIRECTION

TIME OF DAY	FLOWS AND CAPACITY IN VEH/HR								AVERAGE SPEEDS IN MPH						
	MAIN ROUTE		ALTERNATE ROUTE		SITE CAPA CITY	FLOW MAIN ROUTE	FLOW DIVER -TING	TOTAL DIVN FLOW	AV.DEL PER VEH (MINS)	AVERAGE QUEUE (VEH)	MAIN ROUTE		SITE	ALTERNATE ROUTE	
	DEMAND FLOW	PCT HEAVY	NORMAL FLOW	PCT HEAVY							WITHOUT WORK ZN	WITH WORK ZN		WITHOUT WORK ZN	WITH WORK ZN
MID-1 AM	218	0.0	133	0.0	1500	218	0	133	0.44	0	66.0	58.6	44.6	28.3	28.3
1-2 AM	137	0.0	84	0.0	1500	137	0	84	0.44	0	66.1	58.9	45.0	28.8	28.8
2-3 AM	89	0.0	55	0.0	1500	89	0	55	0.43	0	66.2	59.0	45.1	29.2	29.2
3-4 AM	83	0.0	51	0.0	1500	83	0	51	0.43	0	66.3	59.1	45.1	29.2	29.2
4-5 AM	77	0.0	48	0.0	1500	77	0	48	0.43	0	66.3	59.1	45.2	29.2	29.2
5-6 AM	75	0.0	46	0.0	1500	75	0	46	0.43	0	66.3	59.1	45.2	29.2	29.2
6-7 AM	93	0.0	57	0.0	1500	93	0	57	0.43	0	66.2	59.0	45.1	29.1	29.1
7-8 AM	162	0.0	99	0.0	1500	162	0	99	0.44	0	66.1	58.8	44.8	28.6	28.6
8-9 AM	281	0.0	171	0.0	1500	281	0	171	0.45	0	65.9	58.4	44.3	27.8	27.8
9-10 AM	418	0.0	255	0.0	1500	418	0	255	0.46	0	65.6	58.1	43.8	26.8	26.8
10-11 AM	624	0.0	380	0.0	1500	624	0	380	0.48	0	65.2	57.5	43.0	25.3	25.3
11A-NOON	844	0.0	514	0.0	1500	844	0	514	0.50	0	64.8	56.9	42.2	23.8	23.8
NOON-1PM	1051	0.0	641	0.0	1500	1051	0	641	0.52	0	64.4	56.3	41.5	22.3	22.3
1-2 PM	1233	0.0	752	0.0	1500	1233	0	752	0.68	0	64.1	54.0	37.4	21.0	21.0
2-3 PM	1336	0.0	815	0.0	1500	1336	0	815	0.81	0	63.9	52.3	34.5	20.2	20.2
3-4 PM	1420	0.0	867	0.0	1500	1420	0	867	0.92	0	63.7	50.9	32.5	19.7	19.7
4-5 PM	1472	0.0	897	0.0	1500	1472	0	897	0.99	0	63.7	50.2	31.4	19.4	19.4
5-6 PM	1406	0.0	857	0.0	1500	1406	0	857	0.90	0	63.8	51.2	32.9	19.7	19.7
6-7 PM	1292	0.0	787	0.0	1500	1292	0	787	0.76	0	64.0	53.0	35.7	20.6	20.6
7-8 PM	1146	0.0	699	0.0	1500	1146	0	699	0.57	0	64.3	55.6	40.2	21.6	21.6
8-9 PM	1058	0.0	645	0.0	1500	1058	0	645	0.52	0	64.4	56.3	41.5	22.2	22.2
9-10 PM	825	0.0	502	0.0	1500	825	0	502	0.50	0	64.8	56.9	42.3	23.9	23.9
10-11 PM	602	0.0	367	0.0	1500	602	0	367	0.48	0	65.3	57.6	43.1	25.5	25.5
11PM-MID	384	0.0	233	0.0	1500	384	0	233	0.46	0	65.6	58.2	44.0	27.1	27.1

----- SITE BREAKDOWN DELAYS -----	
BREAKDOWN DURATION (MINS)	0
RANGE OF QUEUE DELAY - MIN	0.0
(VEH-H) MAX	0.0
RANGE OF DIVN DELAY - MIN	0.0
(VEH-H) MAX	0.0
AV BREAKDOWNS PER DAY	0.00
AV QUEUE DELAY/DAY (VEH-H)	0.0
AV DIVN DELAY/DAY (VEH-H)	0.0
AV TOTAL DELAY/DAY (VEH-H)	0.0

----- SITE ACCIDENT DELAYS -----	
ACCIDENT DURATION (MINS)	0
RANGE OF QUEUE DELAY - MIN	0.0
(VEH-H) MAX	0.0
RANGE OF DIVN DELAY - MIN	0.0
(VEH-H) MAX	0.0
AV ACCIDENTS PER DAY	0.00
AV QUEUE DELAY/DAY (VEH-H)	0.0
AV DIVN DELAY/DAY (VEH-H)	0.0
AV TOTAL DELAY/DAY (VEH-H)	0.0

AVERAGE ACCIDENT NUMBERS (PIA/DAY)	
MAIN ROUTE WITHOUT WORKS	0.0101
MAIN ROUTE WITH WORKS	0.0091
DIVERSION	0.0795

PIA: Personal Injury Accidents

IMPACTS ON ROAD USERS	
ROAD USER COSTS PER DAY (DOLLARS)	\$2,881
CONGESTED HOURS PER DAY*	0

*Delays Exceeding 15 Minutes

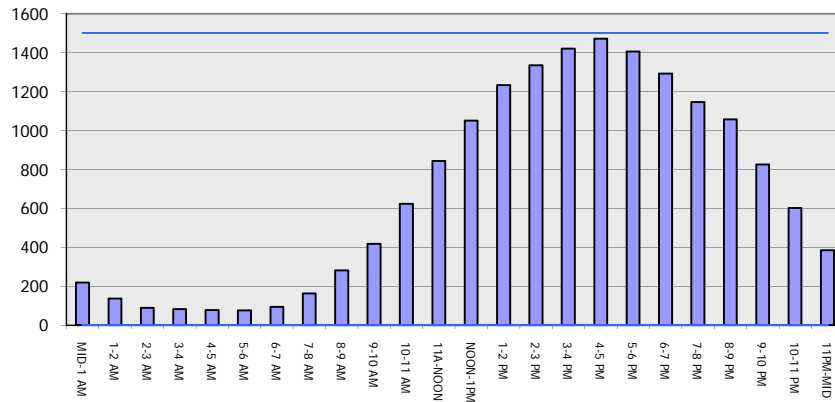
IH 94: USH 12 TO IH 90/94 (MONROE COUNTY)
CONTINUOUS (24 HOUR) CLOSURE
DIVERSION ROUTE: IH 90, USH 12

MAY
 Analyzed for 2009
 Construction Season

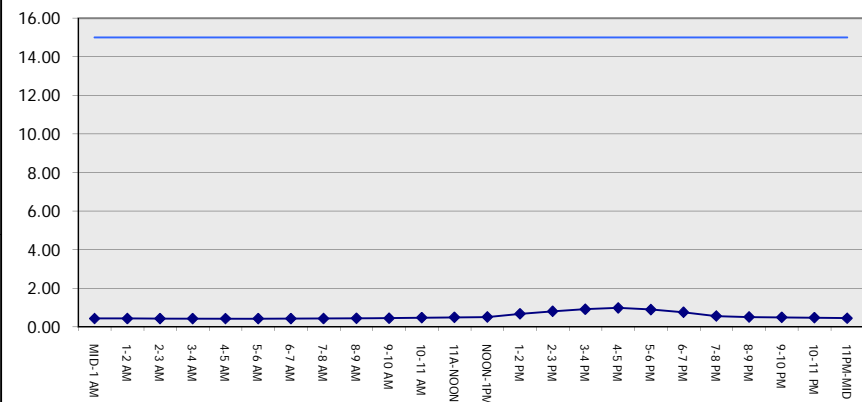
GRAPHICAL REPRESENTATION OF TRAFFIC MODEL INPUT AND OUTPUT

SUNDAY WESTBOUND DIRECTION

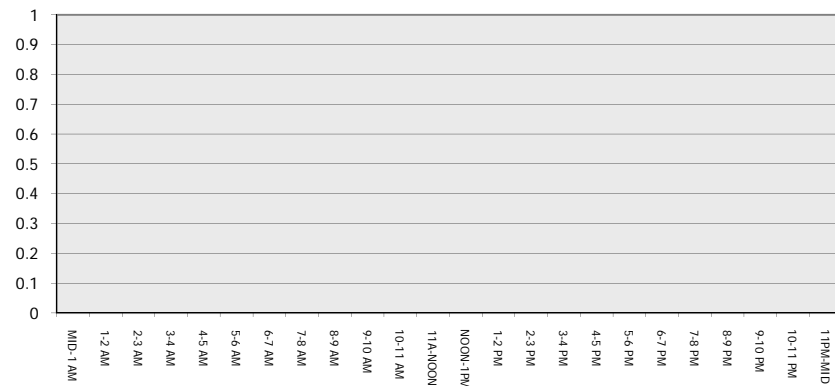
Main Route - Traffic Demand (Vehicles Per Hour)



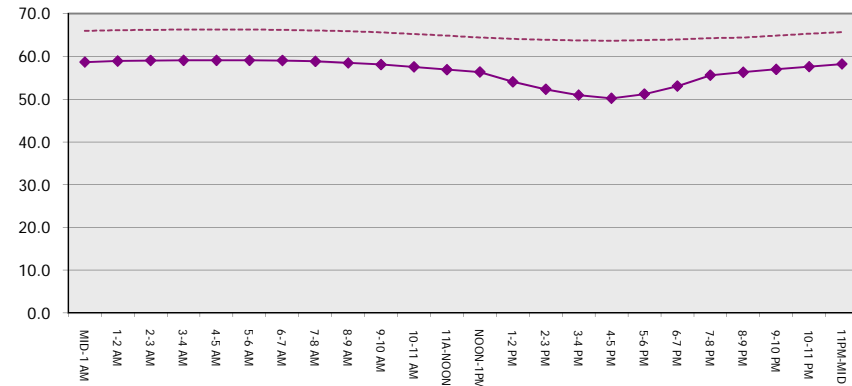
Main Route Average Delay Per Vehicle (Minutes)



Main Route - Average Queue Length (Vehicles)



Main Route - Average Speed (MPH)



IH 94: USH 12 TO IH 90/94 (MONROE COUNTY) CONTINUOUS (24 HOUR) CLOSURE DIVERSION ROUTE: IH 90, USH 12	MAY
	Analyzed for 2009 Construction Season

SUMMARY OF TRAFFIC MODEL OUTPUT

SUNDAY EASTBOUND DIRECTION

TIME OF DAY	FLOWS AND CAPACITY IN VEH/HR								AVERAGE SPEEDS IN MPH						
	MAIN		DIVERSION		SITE CAPA CITY	FLOW MAIN ROUTE	FLOW DIVER -TING	TOTAL DIVN FLOW	AV.DEL PER VEH (MINS)	AVERAGE QUEUE (VEH)	MAIN ROUTE		SITE	ALTERNATE ROUTE	
	DEMAND FLOW	PCT HEAVY	NORMAL FLOW	PCT HEAVY							WITHOUT WORK ZN	WITH WORK ZN		WITHOUT WORK ZN	WITH WORK ZN
MID-1 AM	197	0.0	120	0.0	1500	197	0	120	0.44	0	66.0	58.7	44.7	27.0	27.0
1-2 AM	134	0.0	82	0.0	1500	134	0	82	0.44	0	66.1	58.9	45.0	27.9	27.9
2-3 AM	101	0.0	62	0.0	1500	101	0	62	0.43	0	66.2	59.0	45.1	28.4	28.4
3-4 AM	79	0.0	48	0.0	1500	79	0	48	0.43	0	66.3	59.1	45.1	28.7	28.7
4-5 AM	76	0.0	47	0.0	1500	76	0	47	0.43	0	66.3	59.1	45.2	28.7	28.7
5-6 AM	72	0.0	44	0.0	1500	72	0	44	0.43	0	66.3	59.1	45.2	28.8	28.8
6-7 AM	88	0.0	54	0.0	1500	88	0	54	0.43	0	66.2	59.0	45.1	28.6	28.6
7-8 AM	165	0.0	100	0.0	1500	165	0	100	0.44	0	66.1	58.8	44.8	27.4	27.4
8-9 AM	274	0.0	167	0.0	1500	274	0	167	0.45	0	65.9	58.5	44.4	25.9	25.9
9-10 AM	449	0.0	274	0.0	1500	449	0	274	0.47	0	65.6	58.0	43.7	23.4	23.4
10-11 AM	658	0.0	402	0.0	1500	658	0	402	0.49	0	65.1	57.4	42.9	20.4	20.4
11A-NOON	881	0.0	537	0.0	1500	881	0	537	0.51	0	64.8	56.8	42.1	17.8	17.8
NOON-1PM	1043	0.0	636	0.0	1500	1043	0	636	0.52	0	64.5	56.3	41.5	16.0	16.0
1-2 PM	1142	0.0	696	0.0	1500	1142	0	696	0.56	0	64.3	55.6	40.4	14.9	14.9
2-3 PM	1218	0.0	742	0.0	1500	1218	0	742	0.66	0	64.1	54.3	37.9	14.1	14.1
3-4 PM	1270	0.0	774	0.0	1500	1270	0	774+	0.73	0	64.0	53.4	36.3	13.5	13.5
4-5 PM	1293	0.0	788	0.0	1500	1293	0	788+	0.76	0	64.0	53.0	35.7	13.3	13.3
5-6 PM	1233	0.0	751	0.0	1500	1233	0	751	0.68	0	64.1	54.0	37.4	13.9	13.9
6-7 PM	1085	0.0	661	0.0	1500	1085	0	661	0.53	0	64.3	56.2	41.4	15.6	15.6
7-8 PM	924	0.0	563	0.0	1500	924	0	563	0.51	0	64.6	56.6	41.9	17.3	17.3
8-9 PM	762	0.0	465	0.0	1500	762	0	465	0.50	0	65.0	57.1	42.5	19.1	19.1
9-10 PM	669	0.0	408	0.0	1500	669	0	408	0.49	0	65.1	57.4	42.8	20.2	20.2
10-11 PM	488	0.0	297	0.0	1500	488	0	297	0.47	0	65.5	57.9	43.5	22.9	22.9
11PM-MID	357	0.0	217	0.0	1500	357	0	217	0.46	0	65.7	58.2	44.0	24.7	24.7

+ INDICATES DIVERSION FLOW EXCEEDS USER-SPECIFIED WARNING LIMIT

----- SITE BREAKDOWN DELAYS -----	
BREAKDOWN DURATION (MINS)	0
RANGE OF QUEUE DELAY - MIN	0.0
(VEH-H) MAX	0.0
RANGE OF DIVN DELAY - MIN	0.0
(VEH-H) MAX	0.0
AV BREAKDOWNS PER DAY	0.00
AV QUEUE DELAY/DAY (VEH-H)	0.0
AV DIVN DELAY/DAY (VEH-H)	0.0
AV TOTAL DELAY/DAY (VEH-H)	0.0

----- SITE ACCIDENT DELAYS -----	
ACCIDENT DURATION (MINS)	0
RANGE OF QUEUE DELAY - MIN	0.0
(VEH-H) MAX	0.0
RANGE OF DIVN DELAY - MIN	0.0
(VEH-H) MAX	0.0
AV ACCIDENTS PER DAY	0.00
AV QUEUE DELAY/DAY (VEH-H)	0.0
AV DIVN DELAY/DAY (VEH-H)	0.0
AV TOTAL DELAY/DAY (VEH-H)	0.0

AVERAGE ACCIDENT NUMBERS (PIA/DAY)	
MAIN ROUTE WITHOUT WORKS	0.0091
MAIN ROUTE WITH WORKS	0.0081
DIVERSION	0.0713

PIA: Personal Injury Accidents

IMPACTS ON ROAD USERS	
ROAD USER COSTS PER DAY (DOLLARS)	\$2,195
CONGESTED HOURS PER DAY*	0

*Delays Exceeding 15 Minutes

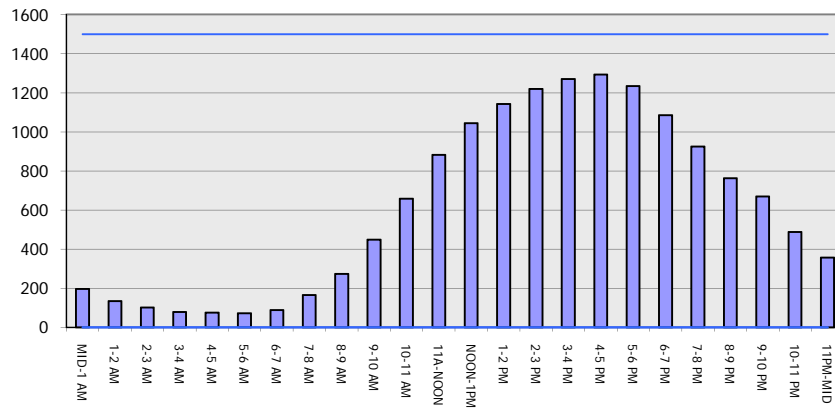
IH 94: USH 12 TO IH 90/94 (MONROE COUNTY)
CONTINUOUS (24 HOUR) CLOSURE
DIVERSION ROUTE: IH 90, USH 12

MAY
 Analyzed for 2009
 Construction Season

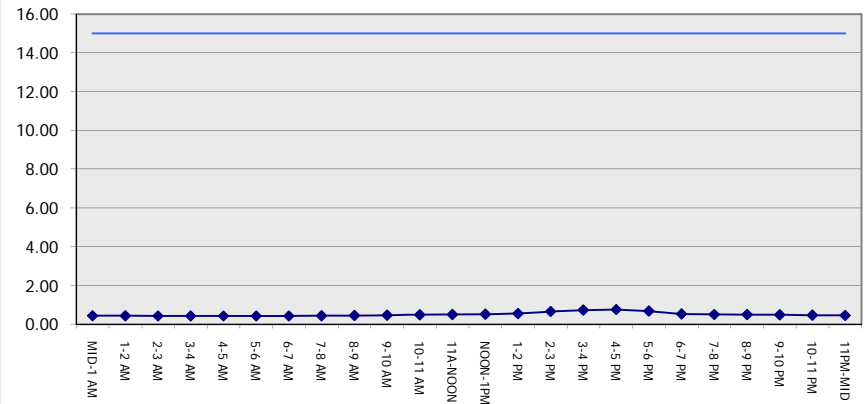
GRAPHICAL REPRESENTATION OF TRAFFIC MODEL INPUT AND OUTPUT

SUNDAY EASTBOUND DIRECTION

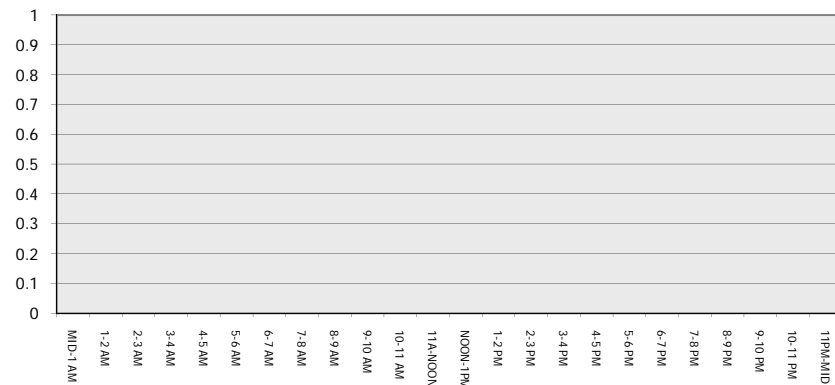
Main Route - Traffic Demand (Vehicles Per Hour)



Main Route Average Delay Per Vehicle (Minutes)



Main Route - Average Queue Length (Vehicles)



Main Route - Average Speed (MPH)

