

**IH 94: USH 12 TO IH 90/94 (MONROE COUNTY)
CONTINUOUS (24 HOUR) CLOSURE
DIVERSION ROUTE: IH 90, USH 12**

MAY
Analyzed for 2009
Construction Season

SUMMARY OF TRAFFIC MODEL OUTPUT
SATURDAY WESTBOUND DIRECTION

TIME OF DAY	FLOWS AND CAPACITY IN VEH/HR								AVERAGE SPEEDS IN MPH						
	MAIN ROUTE		ALTERNATE ROUTE		SITE CAPA CITY	FLOW MAIN ROUTE	FLOW DIVER -TING	TOTAL DIVN FLOW	AV.DEL PER VEH (MINS)	AVERAGE QUEUE (VEH)	MAIN ROUTE		ALTERNATE ROUTE		
	DEMAND FLOW	PCT HEAVY	NORMAL FLOW	PCT HEAVY							WITHOUT WORK ZN	WITH WORK ZN	SITE	WITHOUT WORK ZN	WITH WORK ZN
MID-1 AM	440	0.0	268	0.0	1500	440	0	268	0.47	0	65.6	58.0	43.7	26.6	26.6
1-2 AM	315	0.0	192	0.0	1500	315	0	192	0.45	0	65.8	58.4	44.2	27.6	27.6
2-3 AM	235	0.0	143	0.0	1500	235	0	143	0.45	0	66.0	58.6	44.5	28.1	28.1
3-4 AM	194	0.0	119	0.0	1500	194	0	119	0.44	0	66.0	58.7	44.7	28.4	28.4
4-5 AM	189	0.0	116	0.0	1500	189	0	116	0.44	0	66.0	58.7	44.7	28.4	28.4
5-6 AM	203	0.0	124	0.0	1500	203	0	124	0.44	0	66.0	58.7	44.6	28.4	28.4
6-7 AM	221	0.0	135	0.0	1500	221	0	135	0.44	0	66.0	58.6	44.6	28.2	28.2
7-8 AM	359	0.0	219	0.0	1500	359	0	219	0.46	0	65.7	58.2	44.0	27.3	27.3
8-9 AM	572	0.0	349	0.0	1500	572	0	349	0.48	0	65.3	57.6	43.2	25.7	25.7
9-10 AM	885	0.0	540	0.0	1500	885	0	540	0.51	0	64.7	56.8	42.1	23.5	23.5
10-11 AM	1111	0.0	677	0.0	1500	1111	0	677	0.53	0	64.3	56.1	41.3	21.9	21.9
11A-NOON	1234	0.0	752	0.0	1500	1234	0	752	0.68	0	64.1	54.0	37.4	21.0	21.0
NOON-1PM	1172	0.0	714	0.0	1500	1172	0	714	0.60	0	64.2	55.1	39.4	21.4	21.4
1-2 PM	1097	0.0	669	0.0	1500	1097	0	669	0.53	0	64.3	56.2	41.4	21.9	21.9
2-3 PM	994	0.0	606	0.0	1500	994	0	606	0.52	0	64.5	56.4	41.7	22.7	22.7
3-4 PM	987	0.0	602	0.0	1500	987	0	602	0.52	0	64.5	56.4	41.7	22.7	22.7
4-5 PM	911	0.0	555	0.0	1500	911	0	555	0.51	0	64.7	56.7	42.0	23.3	23.3
5-6 PM	835	0.0	509	0.0	1500	835	0	509	0.50	0	64.8	56.9	42.3	23.8	23.8
6-7 PM	721	0.0	439	0.0	1500	721	0	439	0.49	0	65.0	57.2	42.7	24.7	24.7
7-8 PM	657	0.0	401	0.0	1500	657	0	401	0.49	0	65.1	57.4	42.9	25.1	25.1
8-9 PM	556	0.0	339	0.0	1500	556	0	339	0.48	0	65.3	57.7	43.3	25.8	25.8
9-10 PM	458	0.0	279	0.0	1500	458	0	279	0.47	0	65.5	57.9	43.7	26.5	26.5
10-11 PM	358	0.0	218	0.0	1500	358	0	218	0.46	0	65.7	58.2	44.0	27.3	27.3
11PM-MID	265	0.0	161	0.0	1500	265	0	161	0.45	0	65.9	58.5	44.4	27.9	27.9

----- SITE BREAKDOWN DELAYS -----	
BREAKDOWN DURATION (MINS)	0
RANGE OF QUEUE DELAY - MIN (VEH-H) MAX	0.0
RANGE OF DIVN DELAY - MIN (VEH-H) MAX	0.0
AV BREAKDOWNS PER DAY	0.00
AV QUEUE DELAY/DAY (VEH-H)	0.0
AV DIVN DELAY/DAY (VEH-H)	0.0
AV TOTAL DELAY/DAY (VEH-H)	0.0

----- SITE ACCIDENT DELAYS -----	
ACCIDENT DURATION (MINS)	0
RANGE OF QUEUE DELAY - MIN (VEH-H) MAX	0.0
RANGE OF DIVN DELAY - MIN (VEH-H) MAX	0.0
AV ACCIDENTS PER DAY	0.00
AV QUEUE DELAY/DAY (VEH-H)	0.0
AV DIVN DELAY/DAY (VEH-H)	0.0
AV TOTAL DELAY/DAY (VEH-H)	0.0

AVERAGE ACCIDENT NUMBERS (PIA/DAY)	
MAIN ROUTE WITHOUT WORKS	0.0093
MAIN ROUTE WITH WORKS	0.0083
DIVERSION	0.0729

PIA: Personal Injury Accidents

IMPACTS ON ROAD USERS	
ROAD USER COSTS PER DAY (DOLLARS)	\$1,962
CONGESTED HOURS PER DAY*	0

*Delays Exceeding 15 Minutes

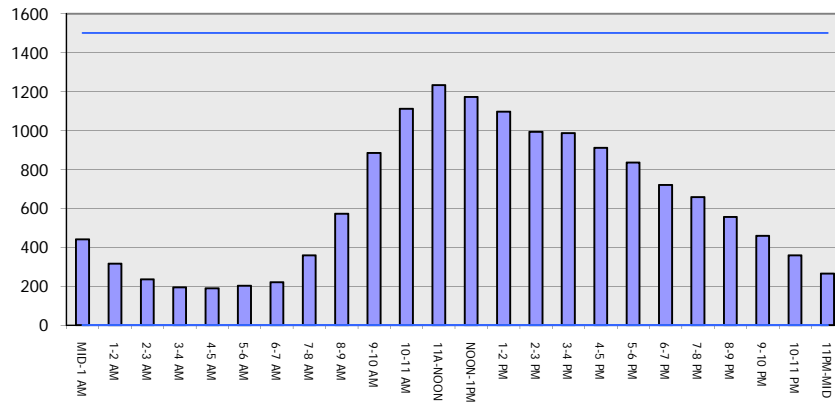
IH 94: USH 12 TO IH 90/94 (MONROE COUNTY)
CONTINUOUS (24 HOUR) CLOSURE
DIVERSION ROUTE: IH 90, USH 12

MAY
 Analyzed for 2009
 Construction Season

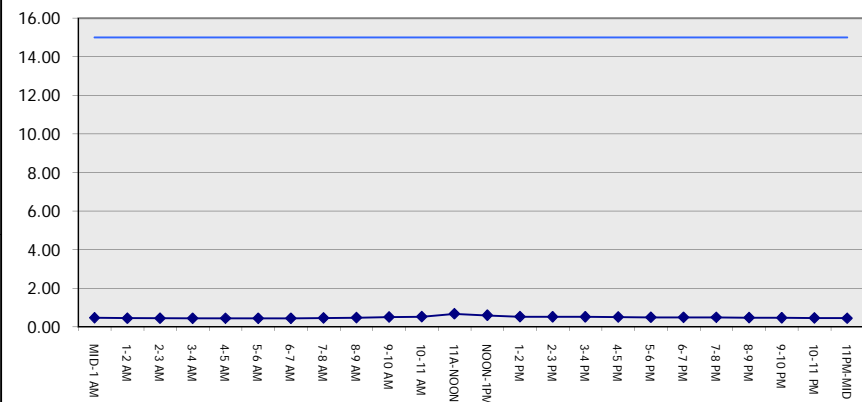
GRAPHICAL REPRESENTATION OF TRAFFIC MODEL INPUT AND OUTPUT

SATURDAY WESTBOUND DIRECTION

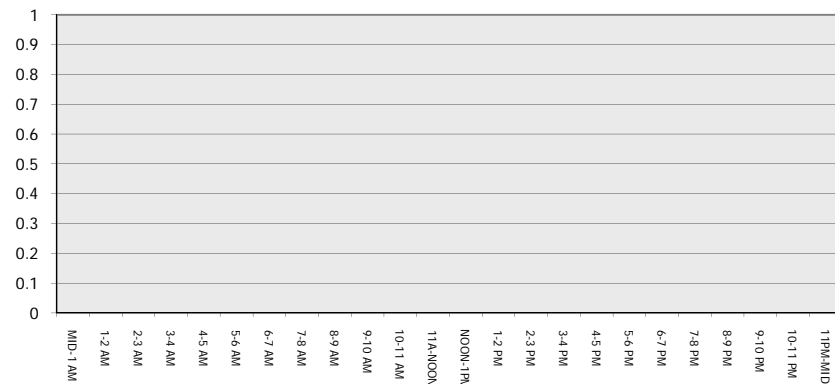
Main Route - Traffic Demand (Vehicles Per Hour)



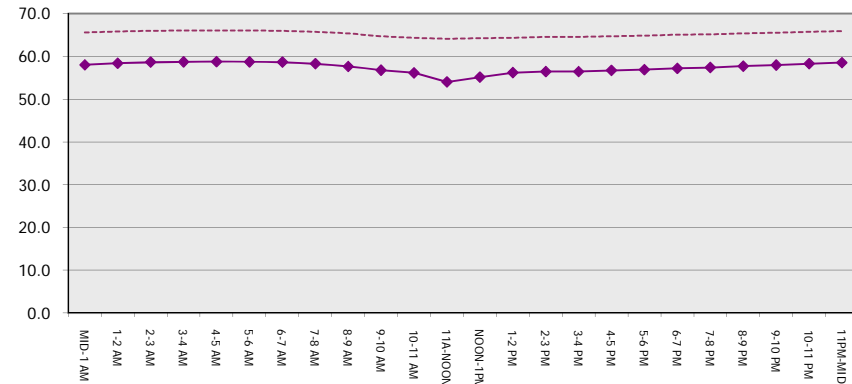
Main Route Average Delay Per Vehicle (Minutes)



Main Route - Average Queue Length (Vehicles)



Main Route - Average Speed (MPH)



IH 94: USH 12 TO IH 90/94 (MONROE COUNTY) CONTINUOUS (24 HOUR) CLOSURE DIVERSION ROUTE: IH 90, USH 12	MAY
	Analyzed for 2009 Construction Season

SUMMARY OF TRAFFIC MODEL OUTPUT

SATURDAY EASTBOUND DIRECTION

TIME OF DAY	FLOWS AND CAPACITY IN VEH/HR								AVERAGE SPEEDS IN MPH						
	MAIN		DIVERSION		SITE CAPA CITY	FLOW MAIN ROUTE	FLOW DIVER -TING	TOTAL DIVN FLOW	AV.DEL PER VEH (MINS)	AVERAGE QUEUE (VEH)	MAIN ROUTE		SITE	ALTERNATE ROUTE	
	DEMAND FLOW	PCT HEAVY	NORMAL FLOW	PCT HEAVY							WITHOUT WORK ZN	WITH WORK ZN		WITHOUT WORK ZN	WITH WORK ZN
MID-1 AM	317	0.0	193	0.0	1500	317	0	193	0.45	0	65.8	58.4	44.2	25.3	25.3
1-2 AM	241	0.0	147	0.0	1500	241	0	147	0.45	0	66.0	58.6	44.5	26.4	26.4
2-3 AM	196	0.0	120	0.0	1500	196	0	120	0.44	0	66.0	58.7	44.7	27.0	27.0
3-4 AM	165	0.0	100	0.0	1500	165	0	100	0.44	0	66.1	58.8	44.8	27.4	27.4
4-5 AM	124	0.0	75	0.0	1500	124	0	75	0.43	0	66.1	58.9	45.0	28.1	28.1
5-6 AM	136	0.0	83	0.0	1500	136	0	83	0.44	0	66.1	58.9	45.0	27.9	27.9
6-7 AM	156	0.0	95	0.0	1500	156	0	95	0.44	0	66.1	58.8	44.8	27.6	27.6
7-8 AM	270	0.0	164	0.0	1500	270	0	164	0.45	0	65.9	58.5	44.4	26.0	26.0
8-9 AM	443	0.0	270	0.0	1500	443	0	270	0.47	0	65.6	58.0	43.7	23.5	23.5
9-10 AM	616	0.0	375	0.0	1500	616	0	375	0.48	0	65.3	57.5	43.1	21.1	21.1
10-11 AM	854	0.0	521	0.0	1500	854	0	521	0.51	0	64.8	56.8	42.2	18.1	18.1
11A-NOON	989	0.0	603	0.0	1500	989	0	603	0.52	0	64.5	56.4	41.7	16.6	16.6
NOON-1PM	1028	0.0	626	0.0	1500	1028	0	626	0.52	0	64.5	56.4	41.6	16.2	16.2
1-2 PM	958	0.0	583	0.0	1500	958	0	583	0.52	0	64.6	56.6	41.9	17.0	17.0
2-3 PM	900	0.0	549	0.0	1500	900	0	549	0.51	0	64.7	56.7	42.0	17.6	17.6
3-4 PM	857	0.0	523	0.0	1500	857	0	523	0.51	0	64.8	56.8	42.2	18.1	18.1
4-5 PM	803	0.0	489	0.0	1500	803	0	489	0.50	0	64.9	57.0	42.4	18.7	18.7
5-6 PM	754	0.0	460	0.0	1500	754	0	460	0.50	0	65.0	57.1	42.5	19.3	19.3
6-7 PM	668	0.0	407	0.0	1500	668	0	407	0.49	0	65.1	57.4	42.8	20.3	20.3
7-8 PM	589	0.0	359	0.0	1500	589	0	359	0.48	0	65.3	57.6	43.2	21.4	21.4
8-9 PM	516	0.0	315	0.0	1500	516	0	315	0.47	0	65.5	57.8	43.5	22.5	22.5
9-10 PM	430	0.0	262	0.0	1500	430	0	262	0.46	0	65.6	58.1	43.8	23.7	23.7
10-11 PM	355	0.0	216	0.0	1500	355	0	216	0.46	0	65.7	58.2	44.1	24.8	24.8
11PM-MID	286	0.0	175	0.0	1500	286	0	175	0.45	0	65.8	58.4	44.3	25.7	25.7

----- SITE BREAKDOWN DELAYS -----	
BREAKDOWN DURATION (MINS)	0
RANGE OF QUEUE DELAY - MIN	0.0
(VEH-H) MAX	0.0
RANGE OF DIVN DELAY - MIN	0.0
(VEH-H) MAX	0.0
AV BREAKDOWNS PER DAY	0.00
AV QUEUE DELAY/DAY (VEH-H)	0.0
AV DIVN DELAY/DAY (VEH-H)	0.0
AV TOTAL DELAY/DAY (VEH-H)	0.0

----- SITE ACCIDENT DELAYS -----	
ACCIDENT DURATION (MINS)	0
RANGE OF QUEUE DELAY - MIN	0.0
(VEH-H) MAX	0.0
RANGE OF DIVN DELAY - MIN	0.0
(VEH-H) MAX	0.0
AV ACCIDENTS PER DAY	0.00
AV QUEUE DELAY/DAY (VEH-H)	0.0
AV DIVN DELAY/DAY (VEH-H)	0.0
AV TOTAL DELAY/DAY (VEH-H)	0.0

AVERAGE ACCIDENT NUMBERS (PIA/DAY)	
MAIN ROUTE WITHOUT WORKS	0.0079
MAIN ROUTE WITH WORKS	0.0070
DIVERSION	0.0616

PIA: Personal Injury Accidents

IMPACTS ON ROAD USERS	
ROAD USER COSTS PER DAY (DOLLARS)	\$1,570
CONGESTED HOURS PER DAY*	0

*Delays Exceeding 15 Minutes

IH 94: USH 12 TO IH 90/94 (MONROE COUNTY)
CONTINUOUS (24 HOUR) CLOSURE
DIVERSION ROUTE: IH 90, USH 12

MAY
 Analyzed for 2009
 Construction Season

GRAPHICAL REPRESENTATION OF TRAFFIC MODEL INPUT AND OUTPUT

SATURDAY EASTBOUND DIRECTION

