

IH 90: STH 16 TO IH 90 & IH 94 (MONROE AND LA CROSSE COUNTIES) CONTINUOUS (24 HOUR) CLOSURE DIVERSION ROUTE: STH 27 - STH 16 - STH 162	AUGUST
	Analyzed for 2009 Construction Season

SUMMARY OF TRAFFIC MODEL OUTPUT

SUNDAY WESTBOUND DIRECTION

TIME OF DAY	FLOWS AND CAPACITY IN VEH/HR							AVERAGE SPEEDS IN MPH							
	MAIN ROUTE		ALTERNATE ROUTE		SITE CAPA CITY	FLOW MAIN ROUTE	FLOW DIVER -TING	TOTAL DIVN FLOW	AV.DEL PER VEH (MINS)	AVERAGE QUEUE (VEH)	MAIN ROUTE		SITE	ALTERNATE ROUTE	
	DEMAND FLOW	PCT HEAVY	NORMAL FLOW	PCT HEAVY							WITHOUT WORK ZN	WITH WORK ZN		WITHOUT WORK ZN	WITH WORK ZN
MID-1 AM	140	0.0	27	0.0	1500	140	0	27	0.44	0	66.1	62.8	44.9	34.5	34.5
1-2 AM	94	0.0	19	0.0	1500	94	0	19	0.43	0	66.2	63.0	45.1	34.6	34.6
2-3 AM	74	0.0	15	0.0	1500	74	0	15	0.43	0	66.3	63.0	45.2	34.6	34.6
3-4 AM	66	0.0	13	0.0	1500	66	0	13	0.43	0	66.3	63.0	45.2	34.7	34.7
4-5 AM	60	0.0	12	0.0	1500	60	0	12	0.43	0	66.3	63.1	45.3	34.7	34.7
5-6 AM	68	0.0	14	0.0	1500	68	0	14	0.43	0	66.3	63.0	45.2	34.7	34.7
6-7 AM	89	0.0	18	0.0	1500	89	0	18	0.43	0	66.2	63.0	45.1	34.6	34.6
7-8 AM	201	0.0	39	0.0	1500	201	0	39	0.44	0	66.0	62.7	44.6	34.3	34.3
8-9 AM	301	0.0	59	0.0	1500	301	0	59	0.45	0	65.8	62.5	44.3	34.2	34.2
9-10 AM	474	0.0	92	0.0	1500	474	0	92	0.47	0	65.5	62.1	43.6	33.8	33.8
10-11 AM	738	0.0	143	0.0	1500	738	0	143	0.49	0	65.0	61.5	42.6	33.2	33.2
11A-NOON	990	0.0	193	0.0	1500	990	0	193	0.52	0	64.5	60.9	41.7	32.7	32.7
NOON-1PM	1028	0.0	200	0.0	1500	1028	0	200	0.52	0	64.5	60.8	41.6	32.6	32.6
1-2 PM	1098	0.0	213	0.0	1500	1098	0	213	0.53	0	64.3	60.7	41.4	32.4	32.4
2-3 PM	1155	0.0	225	0.0	1500	1155	0	225	0.58	0	64.2	60.2	39.9	32.3	32.3
3-4 PM	1198	0.0	233	0.0	1500	1198	0	233	0.63	0	64.1	59.8	38.5	32.2	32.2
4-5 PM	1183	0.0	230	0.0	1500	1183	0	230	0.61	0	64.2	59.9	39.0	32.2	32.2
5-6 PM	1057	0.0	206	0.0	1500	1057	0	206	0.52	0	64.4	60.7	41.5	32.5	32.5
6-7 PM	920	0.0	179	0.0	1500	920	0	179	0.51	0	64.6	61.0	42.0	32.8	32.8
7-8 PM	778	0.0	152	0.0	1500	778	0	152	0.50	0	65.0	61.4	42.5	33.1	33.1
8-9 PM	592	0.0	115	0.0	1500	592	0	115	0.48	0	65.3	61.8	43.2	33.5	33.5
9-10 PM	477	0.0	93	0.0	1500	477	0	93	0.47	0	65.5	62.1	43.6	33.8	33.8
10-11 PM	314	0.0	61	0.0	1500	314	0	61	0.45	0	65.8	62.5	44.2	34.1	34.1
11PM-MID	194	0.0	38	0.0	1500	194	0	38	0.44	0	66.0	62.7	44.7	34.3	34.3

----- SITE BREAKDOWN DELAYS -----	
BREAKDOWN DURATION (MINS)	0
RANGE OF QUEUE DELAY - MIN	0.0
(VEH-H) MAX	0.0
RANGE OF DIVN DELAY - MIN	0.0
(VEH-H) MAX	0.0
AV BREAKDOWNS PER DAY	0.00
AV QUEUE DELAY/DAY (VEH-H)	0.0
AV DIVN DELAY/DAY (VEH-H)	0.0
AV TOTAL DELAY/DAY (VEH-H)	0.0

----- SITE ACCIDENT DELAYS -----	
ACCIDENT DURATION (MINS)	0
RANGE OF QUEUE DELAY - MIN	0.0
(VEH-H) MAX	0.0
RANGE OF DIVN DELAY - MIN	0.0
(VEH-H) MAX	0.0
AV ACCIDENTS PER DAY	0.00
AV QUEUE DELAY/DAY (VEH-H)	0.0
AV DIVN DELAY/DAY (VEH-H)	0.0
AV TOTAL DELAY/DAY (VEH-H)	0.0

AVERAGE ACCIDENT NUMBERS (PIA/DAY)	
MAIN ROUTE WITHOUT WORKS	0.0197
MAIN ROUTE WITH WORKS	0.0188
DIVERSION	0.0383

PIA: Personal Injury Accidents

IMPACTS ON ROAD USERS	
ROAD USER COSTS PER DAY (DOLLARS)	\$1,807
CONGESTED HOURS PER DAY*	0

*Delays Exceeding 15 Minutes

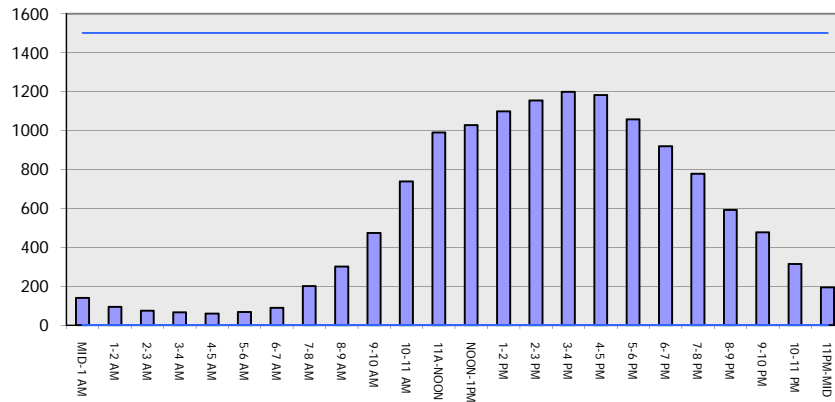
IH 90: STH 16 TO IH 90 & IH 94 (MONROE AND LA CROSSE COUNTIES)
CONTINUOUS (24 HOUR) CLOSURE
DIVERSION ROUTE: STH 27 - STH 16 - STH 162

AUGUST
 Analyzed for 2009
 Construction Season

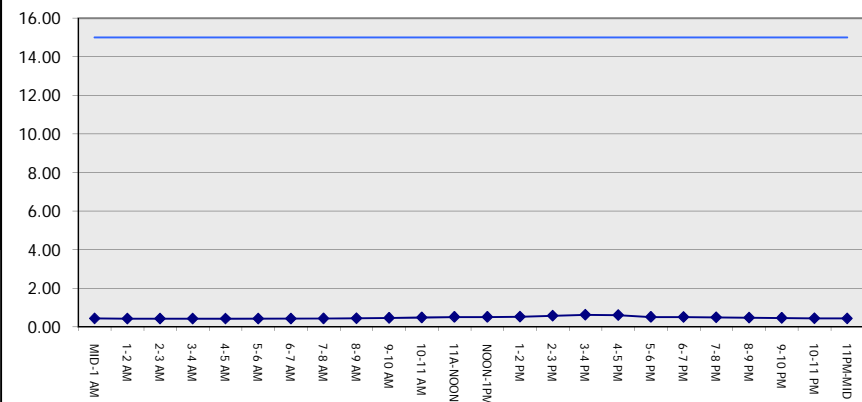
GRAPHICAL REPRESENTATION OF TRAFFIC MODEL INPUT AND OUTPUT

SUNDAY WESTBOUND DIRECTION

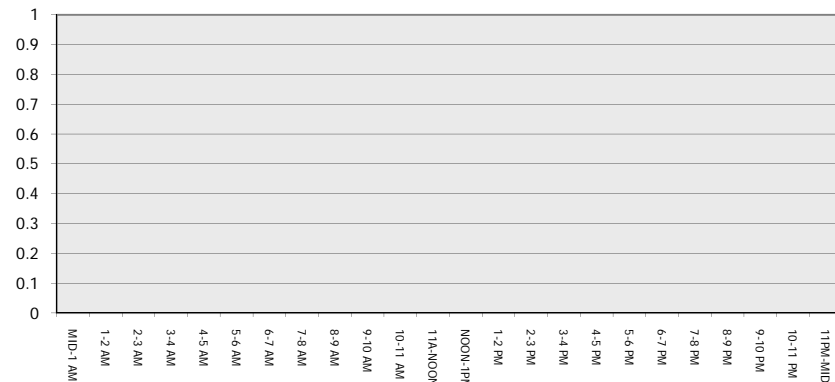
Main Route - Traffic Demand (Vehicles Per Hour)



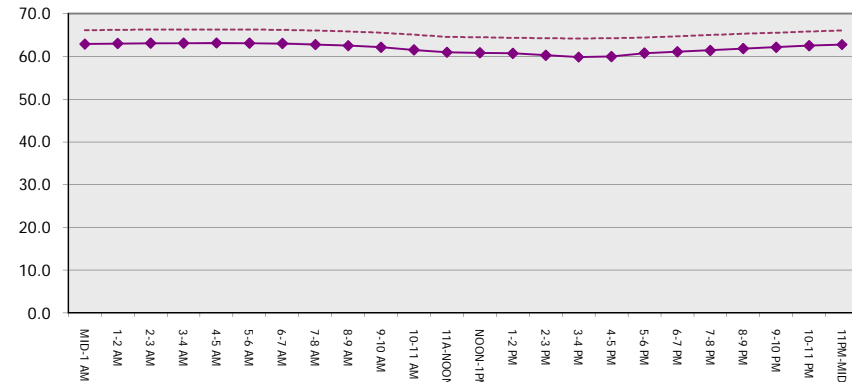
Main Route Average Delay Per Vehicle (Minutes)



Main Route - Average Queue Length (Vehicles)



Main Route - Average Speed (MPH)



IH 90: STH 16 TO IH 90 & IH 94 (MONROE AND LA CROSSE COUNTIES) CONTINUOUS (24 HOUR) CLOSURE DIVERSION ROUTE: STH 27 - STH 16 - STH 162	AUGUST
	Analyzed for 2009 Construction Season

SUMMARY OF TRAFFIC MODEL OUTPUT	
SUNDAY	EASTBOUND DIRECTION

TIME OF DAY	FLOWS AND CAPACITY IN VEH/HR								AVERAGE SPEEDS IN MPH						
	MAIN		DIVERSION		SITE CAPA CITY	FLOW MAIN ROUTE	FLOW DIVER -TING	TOTAL DIVN FLOW	AV.DEL PER VEH (MINS)	AVERAGE QUEUE (VEH)	MAIN ROUTE		SITE	ALTERNATE ROUTE	
	DEMAND FLOW	PCT HEAVY	NORMAL FLOW	PCT HEAVY							WITHOUT WORK ZN	WITH WORK ZN		WITHOUT WORK ZN	WITH WORK ZN
MID-1 AM	107	0.0	21	0.0	1500	107	0	21	0.43	0	66.2	63.0	45.1	34.5	34.5
1-2 AM	83	0.0	17	0.0	1500	83	0	17	0.43	0	66.3	63.0	45.1	34.6	34.6
2-3 AM	65	0.0	13	0.0	1500	65	0	13	0.43	0	66.3	63.0	45.2	34.7	34.7
3-4 AM	82	0.0	16	0.0	1500	82	0	16	0.43	0	66.3	63.0	45.1	34.6	34.6
4-5 AM	84	0.0	17	0.0	1500	84	0	17	0.43	0	66.2	63.0	45.1	34.6	34.6
5-6 AM	100	0.0	20	0.0	1500	100	0	20	0.43	0	66.2	63.0	45.1	34.5	34.5
6-7 AM	148	0.0	29	0.0	1500	148	0	29	0.44	0	66.1	62.8	44.9	34.5	34.5
7-8 AM	253	0.0	49	0.0	1500	253	0	49	0.45	0	65.9	62.6	44.5	34.2	34.2
8-9 AM	422	0.0	83	0.0	1500	422	0	83	0.46	0	65.6	62.2	43.8	33.8	33.8
9-10 AM	653	0.0	128	0.0	1500	653	0	128	0.49	0	65.1	61.7	42.9	33.3	33.3
10-11 AM	890	0.0	174	0.0	1500	890	0	174	0.51	0	64.7	61.1	42.0	32.9	32.9
11A-NOON	1036	0.0	202	0.0	1500	1036	0	202	0.52	0	64.5	60.8	41.5	32.5	32.5
NOON-1PM	1097	0.0	213	0.0	1500	1097	0	213	0.53	0	64.3	60.7	41.4	32.4	32.4
1-2 PM	1169	0.0	228	0.0	1500	1169	0	228	0.60	0	64.2	60.1	39.5	32.3	32.3
2-3 PM	1167	0.0	227	0.0	1500	1167	0	227	0.59	0	64.2	60.1	39.6	32.3	32.3
3-4 PM	1124	0.0	219	0.0	1500	1124	0	219	0.54	0	64.3	60.5	41.0	32.4	32.4
4-5 PM	1074	0.0	209	0.0	1500	1074	0	209	0.53	0	64.4	60.7	41.4	32.5	32.5
5-6 PM	935	0.0	182	0.0	1500	935	0	182	0.51	0	64.6	61.0	41.9	32.8	32.8
6-7 PM	817	0.0	159	0.0	1500	817	0	159	0.50	0	64.8	61.3	42.4	33.0	33.0
7-8 PM	622	0.0	121	0.0	1500	622	0	121	0.48	0	65.2	61.7	43.0	33.5	33.5
8-9 PM	505	0.0	98	0.0	1500	505	0	98	0.47	0	65.5	62.0	43.5	33.7	33.7
9-10 PM	366	0.0	71	0.0	1500	366	0	71	0.46	0	65.7	62.3	44.0	34.0	34.0
10-11 PM	221	0.0	43	0.0	1500	221	0	43	0.44	0	66.0	62.7	44.6	34.3	34.3
11PM-MID	184	0.0	36	0.0	1500	184	0	36	0.44	0	66.0	62.8	44.8	34.4	34.4

----- SITE BREAKDOWN DELAYS -----	
BREAKDOWN DURATION (MINS)	0
RANGE OF QUEUE DELAY - MIN	0.0
(VEH-H) MAX	0.0
RANGE OF DIVN DELAY - MIN	0.0
(VEH-H) MAX	0.0
AV BREAKDOWNS PER DAY	0.00
AV QUEUE DELAY/DAY (VEH-H)	0.0
AV DIVN DELAY/DAY (VEH-H)	0.0
AV TOTAL DELAY/DAY (VEH-H)	0.0

----- SITE ACCIDENT DELAYS -----	
ACCIDENT DURATION (MINS)	0
RANGE OF QUEUE DELAY - MIN	0.0
(VEH-H) MAX	0.0
RANGE OF DIVN DELAY - MIN	0.0
(VEH-H) MAX	0.0
AV ACCIDENTS PER DAY	0.00
AV QUEUE DELAY/DAY (VEH-H)	0.0
AV DIVN DELAY/DAY (VEH-H)	0.0
AV TOTAL DELAY/DAY (VEH-H)	0.0

AVERAGE ACCIDENT NUMBERS (PIA/DAY)	
MAIN ROUTE WITHOUT WORKS	0.0195
MAIN ROUTE WITH WORKS	0.0187
DIVERSION	0.0381

PIA: Personal Injury Accidents

IMPACTS ON ROAD USERS	
ROAD USER COSTS PER DAY (DOLLARS)	\$1,766
CONGESTED HOURS PER DAY*	0

*Delays Exceeding 15 Minutes

**IH 90: STH 16 TO IH 90 & IH 94 (MONROE AND LA CROSSE COUNTIES)
 CONTINUOUS (24 HOUR) CLOSURE
 DIVERSION ROUTE: STH 27 - STH 16 - STH 162**

AUGUST
 Analyzed for 2009
 Construction Season

GRAPHICAL REPRESENTATION OF TRAFFIC MODEL INPUT AND OUTPUT
SUNDAY EASTBOUND DIRECTION

