

**IH 90: STH 16 TO IH 90 & IH 94 (MONROE AND LA CROSSE COUNTIES)
CONTINUOUS (24 HOUR) CLOSURE
DIVERSION ROUTE: STH 27 - STH 16 - STH 162**

MAY
Analyzed for 2009
Construction Season

SUMMARY OF TRAFFIC MODEL OUTPUT
SUNDAY WESTBOUND DIRECTION

TIME OF DAY	FLOWS AND CAPACITY IN VEH/HR						AVERAGE SPEEDS IN MPH								
	MAIN ROUTE		ALTERNATE ROUTE		SITE CAPA CITY	FLOW MAIN ROUTE	FLOW DIVER -TING	TOTAL DIVN FLOW	AV.DEL PER VEH (MINS)	AVERAGE QUEUE (VEH)	MAIN ROUTE		ALTERNATE ROUTE		
	DEMAND FLOW	PCT HEAVY	NORMAL FLOW	PCT HEAVY							WITHOUT WORK ZN	WITH WORK ZN	SITE	WITHOUT WORK ZN	WITH WORK ZN
MID-1 AM	124	0.0	24	0.0	1500	124	0	24	0.43	0	66.1	62.9	45.0	34.5	34.5
1-2 AM	66	0.0	13	0.0	1500	66	0	13	0.43	0	66.3	63.0	45.2	34.7	34.7
2-3 AM	46	0.0	8	0.0	1500	46	0	8	0.43	0	66.3	63.1	45.3	34.7	34.7
3-4 AM	38	0.0	7	0.0	1500	38	0	7	0.43	0	66.3	63.1	45.3	34.7	34.7
4-5 AM	52	0.0	10	0.0	1500	52	0	10	0.43	0	66.3	63.1	45.3	34.7	34.7
5-6 AM	47	0.0	9	0.0	1500	47	0	9	0.43	0	66.3	63.1	45.3	34.7	34.7
6-7 AM	84	0.0	17	0.0	1500	84	0	17	0.43	0	66.2	63.0	45.1	34.6	34.6
7-8 AM	131	0.0	25	0.0	1500	131	0	25	0.44	0	66.1	62.9	45.0	34.5	34.5
8-9 AM	243	0.0	47	0.0	1500	243	0	47	0.45	0	66.0	62.7	44.5	34.3	34.3
9-10 AM	408	0.0	79	0.0	1500	408	0	79	0.46	0	65.6	62.2	43.8	33.9	33.9
10-11 AM	560	0.0	109	0.0	1500	560	0	109	0.48	0	65.3	61.9	43.3	33.6	33.6
11A-NOON	760	0.0	149	0.0	1500	760	0	149	0.50	0	65.0	61.4	42.5	33.2	33.2
NOON-1PM	763	0.0	149	0.0	1500	763	0	149	0.50	0	65.0	61.4	42.5	33.2	33.2
1-2 PM	794	0.0	155	0.0	1500	794	0	155	0.50	0	64.9	61.4	42.4	33.1	33.1
2-3 PM	841	0.0	164	0.0	1500	841	0	164	0.50	0	64.8	61.2	42.2	33.0	33.0
3-4 PM	876	0.0	170	0.0	1500	876	0	170	0.51	0	64.8	61.2	42.1	32.9	32.9
4-5 PM	902	0.0	176	0.0	1500	902	0	176	0.51	0	64.7	61.1	42.0	32.9	32.9
5-6 PM	819	0.0	159	0.0	1500	819	0	159	0.50	0	64.8	61.3	42.4	33.0	33.0
6-7 PM	735	0.0	143	0.0	1500	735	0	143	0.49	0	65.0	61.5	42.6	33.2	33.2
7-8 PM	690	0.0	134	0.0	1500	690	0	134	0.49	0	65.1	61.6	42.8	33.3	33.3
8-9 PM	530	0.0	104	0.0	1500	530	0	104	0.47	0	65.4	62.0	43.4	33.7	33.7
9-10 PM	365	0.0	71	0.0	1500	365	0	71	0.46	0	65.7	62.3	44.0	34.0	34.0
10-11 PM	258	0.0	50	0.0	1500	258	0	50	0.45	0	65.9	62.6	44.5	34.2	34.2
11PM-MID	172	0.0	33	0.0	1500	172	0	33	0.44	0	66.1	62.8	44.8	34.4	34.4

----- SITE BREAKDOWN DELAYS -----	
BREAKDOWN DURATION (MINS)	0
RANGE OF QUEUE DELAY - MIN (VEH-H) MAX	0.0
RANGE OF DIVN DELAY - MIN (VEH-H) MAX	0.0
AV BREAKDOWNS PER DAY	0.00
AV QUEUE DELAY/DAY (VEH-H)	0.0
AV DIVN DELAY/DAY (VEH-H)	0.0
AV TOTAL DELAY/DAY (VEH-H)	0.0

----- SITE ACCIDENT DELAYS -----	
ACCIDENT DURATION (MINS)	0
RANGE OF QUEUE DELAY - MIN (VEH-H) MAX	0.0
RANGE OF DIVN DELAY - MIN (VEH-H) MAX	0.0
AV ACCIDENTS PER DAY	0.00
AV QUEUE DELAY/DAY (VEH-H)	0.0
AV DIVN DELAY/DAY (VEH-H)	0.0
AV TOTAL DELAY/DAY (VEH-H)	0.0

AVERAGE ACCIDENT NUMBERS (PIA/DAY)	
MAIN ROUTE WITHOUT WORKS	0.0152
MAIN ROUTE WITH WORKS	0.0146
DIVERSION	0.0297

PIA: Personal Injury Accidents

IMPACTS ON ROAD USERS	
ROAD USER COSTS PER DAY (DOLLARS)	\$1,290
CONGESTED HOURS PER DAY*	0

*Delays Exceeding 15 Minutes

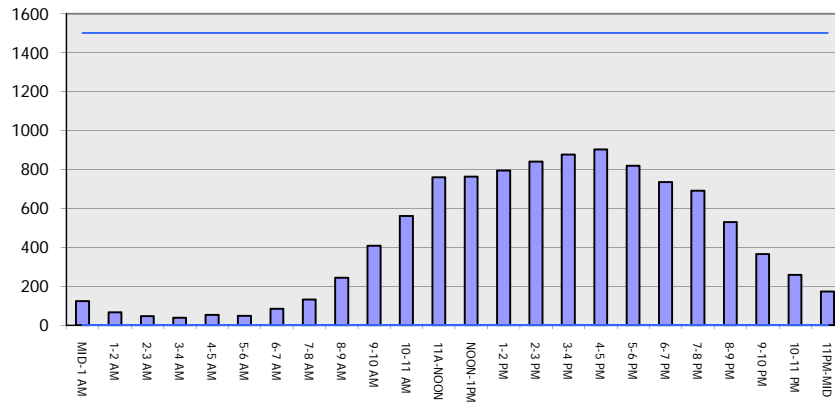
**IH 90: STH 16 TO IH 90 & IH 94 (MONROE AND LA CROSSE COUNTIES)
 CONTINUOUS (24 HOUR) CLOSURE
 DIVERSION ROUTE: STH 27 - STH 16 - STH 162**

MAY
 Analyzed for 2009
 Construction Season

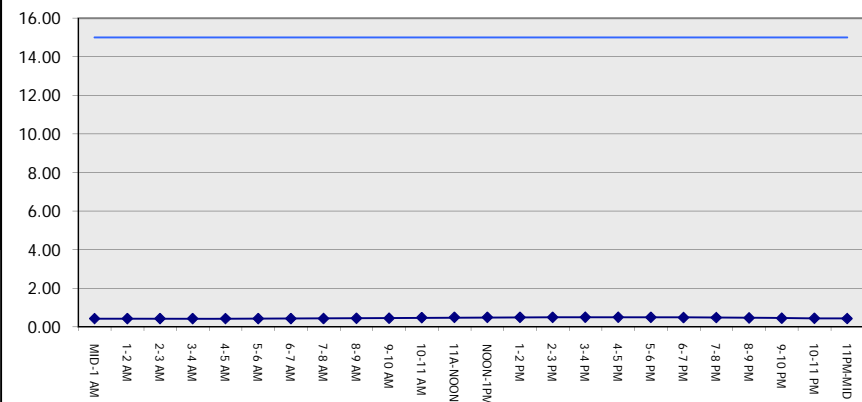
GRAPHICAL REPRESENTATION OF TRAFFIC MODEL INPUT AND OUTPUT

SUNDAY WESTBOUND DIRECTION

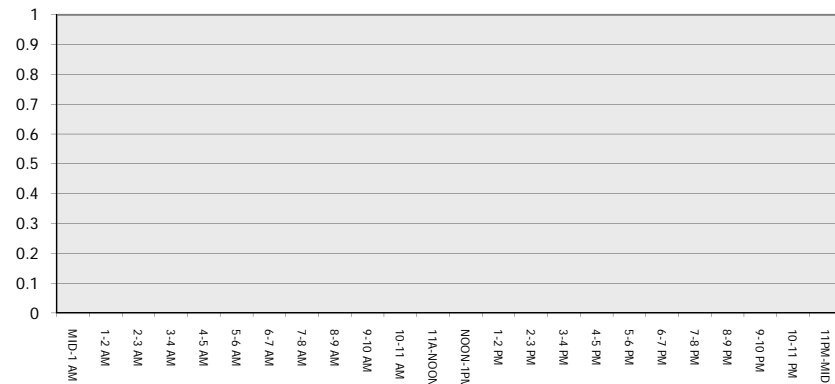
Main Route - Traffic Demand (Vehicles Per Hour)



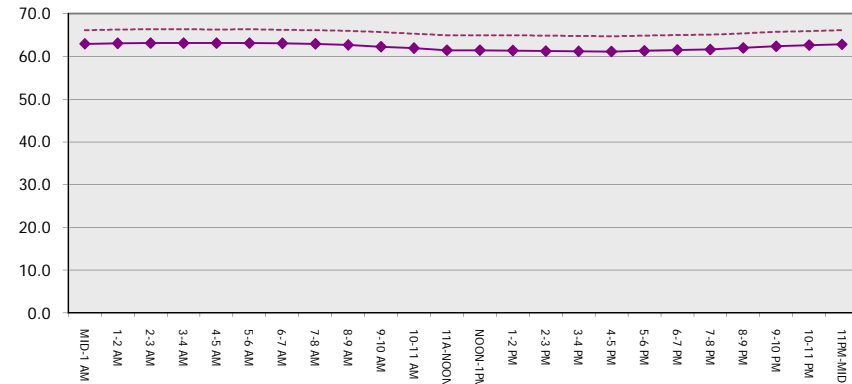
Main Route Average Delay Per Vehicle (Minutes)



Main Route - Average Queue Length (Vehicles)



Main Route - Average Speed (MPH)



IH 90: STH 16 TO IH 90 & IH 94 (MONROE AND LA CROSSE COUNTIES) CONTINUOUS (24 HOUR) CLOSURE DIVERSION ROUTE: STH 27 - STH 16 - STH 162	MAY
	Analyzed for 2009 Construction Season

SUMMARY OF TRAFFIC MODEL OUTPUT

SUNDAY EASTBOUND DIRECTION

TIME OF DAY	FLOWS AND CAPACITY IN VEH/HR								AVERAGE SPEEDS IN MPH						
	MAIN		DIVERSION		SITE CAPA CITY	FLOW MAIN ROUTE	FLOW DIVER -TING	TOTAL DIVN FLOW	AV.DEL PER VEH (MINS)	AVERAGE QUEUE (VEH)	MAIN ROUTE		SITE	ALTERNATE ROUTE	
	DEMAND FLOW	PCT HEAVY	NORMAL FLOW	PCT HEAVY							WITHOUT WORK ZN	WITH WORK ZN		WITHOUT WORK ZN	WITH WORK ZN
MID-1 AM	80	0.0	16	0.0	1500	80	0	16	0.43	0	66.3	63.0	45.1	34.6	34.6
1-2 AM	55	0.0	10	0.0	1500	55	0	10	0.43	0	66.3	63.1	45.3	34.7	34.7
2-3 AM	51	0.0	9	0.0	1500	51	0	9	0.43	0	66.3	63.1	45.3	34.7	34.7
3-4 AM	56	0.0	10	0.0	1500	56	0	10	0.43	0	66.3	63.1	45.3	34.7	34.7
4-5 AM	66	0.0	13	0.0	1500	66	0	13	0.43	0	66.3	63.0	45.2	34.7	34.7
5-6 AM	90	0.0	18	0.0	1500	90	0	18	0.43	0	66.2	63.0	45.1	34.6	34.6
6-7 AM	120	0.0	23	0.0	1500	120	0	23	0.43	0	66.1	62.9	45.0	34.5	34.5
7-8 AM	238	0.0	46	0.0	1500	238	0	46	0.45	0	66.0	62.7	44.5	34.3	34.3
8-9 AM	373	0.0	73	0.0	1500	373	0	73	0.46	0	65.7	62.3	44.0	34.0	34.0
9-10 AM	515	0.0	100	0.0	1500	515	0	100	0.47	0	65.5	62.0	43.5	33.7	33.7
10-11 AM	702	0.0	137	0.0	1500	702	0	137	0.49	0	65.1	61.5	42.7	33.3	33.3
11A-NOON	809	0.0	158	0.0	1500	809	0	158	0.50	0	64.9	61.3	42.4	33.0	33.0
NOON-1PM	832	0.0	162	0.0	1500	832	0	162	0.50	0	64.8	61.2	42.3	33.0	33.0
1-2 PM	846	0.0	165	0.0	1500	846	0	165	0.50	0	64.8	61.2	42.2	33.0	33.0
2-3 PM	916	0.0	179	0.0	1500	916	0	179	0.51	0	64.7	61.0	42.0	32.8	32.8
3-4 PM	948	0.0	184	0.0	1500	948	0	184	0.51	0	64.6	61.0	41.9	32.8	32.8
4-5 PM	888	0.0	173	0.0	1500	888	0	173	0.51	0	64.7	61.1	42.1	32.9	32.9
5-6 PM	786	0.0	153	0.0	1500	786	0	153	0.50	0	64.9	61.4	42.4	33.1	33.1
6-7 PM	648	0.0	127	0.0	1500	648	0	127	0.49	0	65.2	61.7	43.0	33.4	33.4
7-8 PM	530	0.0	104	0.0	1500	530	0	104	0.47	0	65.4	62.0	43.4	33.7	33.7
8-9 PM	404	0.0	78	0.0	1500	404	0	78	0.46	0	65.6	62.2	43.9	33.9	33.9
9-10 PM	288	0.0	56	0.0	1500	288	0	56	0.45	0	65.8	62.5	44.3	34.2	34.2
10-11 PM	185	0.0	36	0.0	1500	185	0	36	0.44	0	66.0	62.8	44.8	34.4	34.4
11PM-MID	121	0.0	23	0.0	1500	121	0	23	0.43	0	66.1	62.9	45.0	34.5	34.5

----- SITE BREAKDOWN DELAYS -----	
BREAKDOWN DURATION (MINS)	0
RANGE OF QUEUE DELAY - MIN	0.0
(VEH-H) MAX	0.0
RANGE OF DIVN DELAY - MIN	0.0
(VEH-H) MAX	0.0
AV BREAKDOWNS PER DAY	0.00
AV QUEUE DELAY/DAY (VEH-H)	0.0
AV DIVN DELAY/DAY (VEH-H)	0.0
AV TOTAL DELAY/DAY (VEH-H)	0.0

----- SITE ACCIDENT DELAYS -----	
ACCIDENT DURATION (MINS)	0
RANGE OF QUEUE DELAY - MIN	0.0
(VEH-H) MAX	0.0
RANGE OF DIVN DELAY - MIN	0.0
(VEH-H) MAX	0.0
AV ACCIDENTS PER DAY	0.00
AV QUEUE DELAY/DAY (VEH-H)	0.0
AV DIVN DELAY/DAY (VEH-H)	0.0
AV TOTAL DELAY/DAY (VEH-H)	0.0

AVERAGE ACCIDENT NUMBERS (PIA/DAY)	
MAIN ROUTE WITHOUT WORKS	0.0156
MAIN ROUTE WITH WORKS	0.0149
DIVERSION	0.0304

PIA: Personal Injury Accidents

IMPACTS ON ROAD USERS	
ROAD USER COSTS PER DAY (DOLLARS)	\$1,321
CONGESTED HOURS PER DAY*	0

*Delays Exceeding 15 Minutes

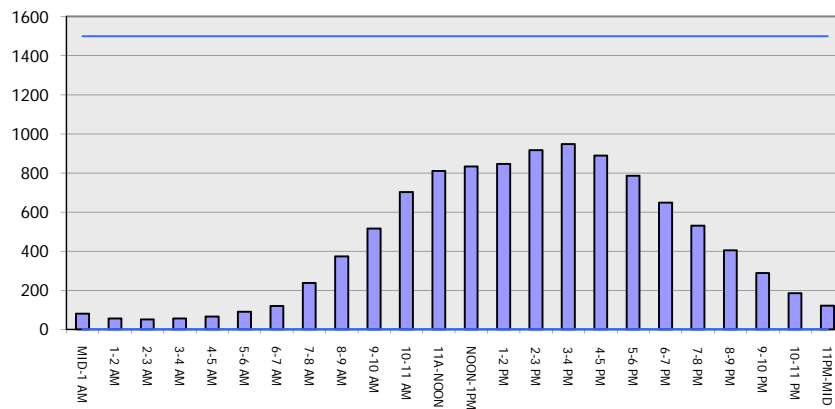
**IH 90: STH 16 TO IH 90 & IH 94 (MONROE AND LA CROSSE COUNTIES)
 CONTINUOUS (24 HOUR) CLOSURE
 DIVERSION ROUTE: STH 27 - STH 16 - STH 162**

MAY
 Analyzed for 2009
 Construction Season

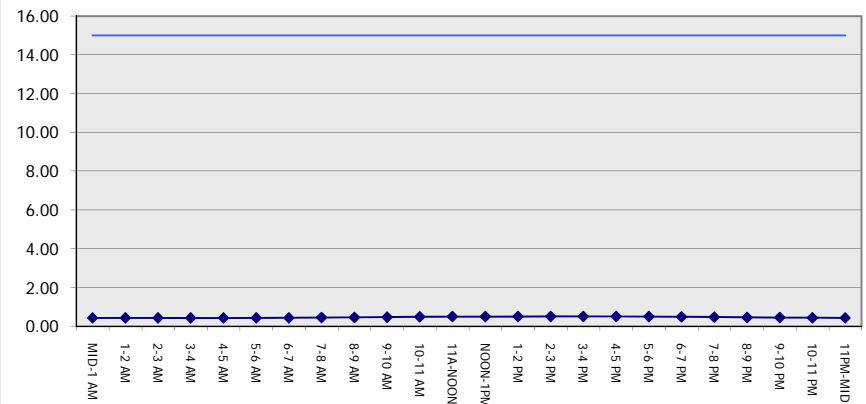
GRAPHICAL REPRESENTATION OF TRAFFIC MODEL INPUT AND OUTPUT

SUNDAY EASTBOUND DIRECTION

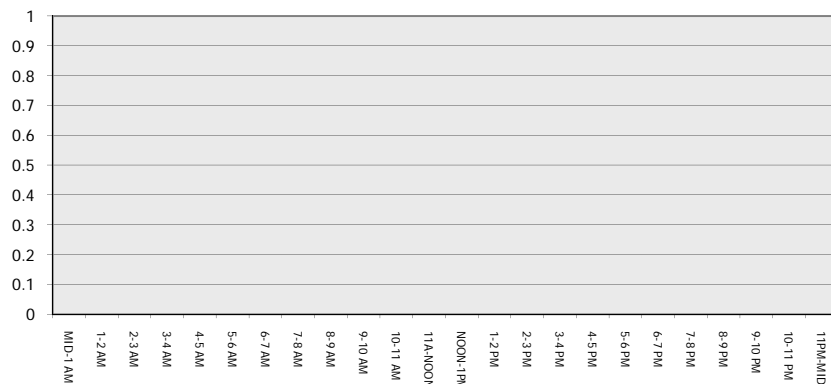
Main Route - Traffic Demand (Vehicles Per Hour)



Main Route Average Delay Per Vehicle (Minutes)



Main Route - Average Queue Length (Vehicles)



Main Route - Average Speed (MPH)

