

**USH 53: CTH OT TO IH 90 (LA CROSSE COUNTY)
CONTINUOUS (24 HOUR) CLOSURE
DIVERSION ROUTE: STH 157 - CTH S**

MAY
Analyzed for 2009
Construction Season

SUMMARY OF TRAFFIC MODEL OUTPUT
SUNDAY SOUTHBOUND DIRECTION

TIME OF DAY	FLOWS AND CAPACITY IN VEH/HR						AVERAGE SPEEDS IN MPH								
	MAIN ROUTE		ALTERNATE ROUTE		SITE CAPA CITY	FLOW MAIN ROUTE	FLOW DIVER -TING	TOTAL DIVN FLOW	AV.DEL PER VEH (MINS)	AVERAGE QUEUE (VEH)	MAIN ROUTE		ALTERNATE ROUTE		
	DEMAND FLOW	PCT HEAVY	NORMAL FLOW	PCT HEAVY							WITHOUT WORK ZN	WITH WORK ZN	SITE	WITHOUT WORK ZN	WITH WORK ZN
MID-1 AM	125	0.0	46	0.0	1500	125	0	46	0.43	0	66.1	46.1	45.0	19.5	19.5
1-2 AM	77	0.0	28	0.0	1500	77	0	28	0.43	0	66.3	46.3	45.2	19.6	19.6
2-3 AM	64	0.0	23	0.0	1500	64	0	23	0.43	0	66.3	46.3	45.2	19.7	19.7
3-4 AM	44	0.0	16	0.0	1500	44	0	16	0.43	0	66.3	46.4	45.3	19.7	19.7
4-5 AM	58	0.0	21	0.0	1500	58	0	21	0.43	0	66.3	46.3	45.3	19.7	19.7
5-6 AM	137	0.0	50	0.0	1500	137	0	50	0.44	0	66.1	46.0	45.0	19.5	19.5
6-7 AM	229	0.0	84	0.0	1500	229	0	84	0.44	0	66.0	45.6	44.6	19.2	19.2
7-8 AM	335	0.0	123	0.0	1500	335	0	123	0.45	0	65.8	45.2	44.2	18.9	18.9
8-9 AM	589	0.0	215	0.0	1500	589	0	215	0.48	0	65.3	44.3	43.2	18.2	18.2
9-10 AM	820	0.0	299	0.0	1500	820	0	299	0.50	0	64.8	43.4	42.3	17.5	17.5
10-11 AM	1059	0.0	388	0.0	1500	1059	0	388	0.52	0	64.4	42.6	41.5	16.8	16.8
11A-NOON	1176	0.0	430	0.0	1500	1176	0	430	0.61	0	64.2	40.4	39.2	16.5	16.5
NOON-1PM	1204	0.0	440	0.0	1500	1204	0	440	0.64	0	64.1	39.5	38.3	16.4	16.4
1-2 PM	1095	0.0	401	0.0	1500	1095	0	401	0.53	0	64.3	42.5	41.4	16.7	16.7
2-3 PM	1032	0.0	377	0.0	1500	1032	0	377	0.52	0	64.5	42.7	41.5	16.9	16.9
3-4 PM	988	0.0	361	0.0	1500	988	0	361	0.52	0	64.5	42.8	41.7	17.0	17.0
4-5 PM	1029	0.0	376	0.0	1500	1029	0	376	0.52	0	64.5	42.7	41.6	16.9	16.9
5-6 PM	893	0.0	327	0.0	1500	893	0	327	0.51	0	64.7	43.2	42.0	17.3	17.3
6-7 PM	723	0.0	264	0.0	1500	723	0	264	0.49	0	65.0	43.8	42.7	17.8	17.8
7-8 PM	556	0.0	203	0.0	1500	556	0	203	0.48	0	65.3	44.4	43.3	18.3	18.3
8-9 PM	468	0.0	170	0.0	1500	468	0	170	0.47	0	65.5	44.7	43.7	18.5	18.5
9-10 PM	331	0.0	121	0.0	1500	331	0	121	0.45	0	65.8	45.3	44.2	18.9	18.9
10-11 PM	231	0.0	84	0.0	1500	231	0	84	0.44	0	66.0	45.6	44.6	19.2	19.2
11PM-MID	98	0.0	36	0.0	1500	98	0	36	0.43	0	66.2	46.2	45.1	19.6	19.6

----- SITE BREAKDOWN DELAYS -----	
BREAKDOWN DURATION (MINS)	0
RANGE OF QUEUE DELAY - MIN (VEH-H) MAX	0.0
RANGE OF DIVN DELAY - MIN (VEH-H) MAX	0.0
AV BREAKDOWNS PER DAY	0.00
AV QUEUE DELAY/DAY (VEH-H)	0.0
AV DIVN DELAY/DAY (VEH-H)	0.0
AV TOTAL DELAY/DAY (VEH-H)	0.0

----- SITE ACCIDENT DELAYS -----	
ACCIDENT DURATION (MINS)	0
RANGE OF QUEUE DELAY - MIN (VEH-H) MAX	0.0
RANGE OF DIVN DELAY - MIN (VEH-H) MAX	0.0
AV ACCIDENTS PER DAY	0.00
AV QUEUE DELAY/DAY (VEH-H)	0.0
AV DIVN DELAY/DAY (VEH-H)	0.0
AV TOTAL DELAY/DAY (VEH-H)	0.0

AVERAGE ACCIDENT NUMBERS (PIA/DAY)	
MAIN ROUTE WITHOUT WORKS	0.0023
MAIN ROUTE WITH WORKS	0.0015
DIVERSION	0.0079

PIA: Personal Injury Accidents

IMPACTS ON ROAD USERS	
ROAD USER COSTS PER DAY (DOLLARS)	\$1,791
CONGESTED HOURS PER DAY*	0

*Delays Exceeding 15 Minutes

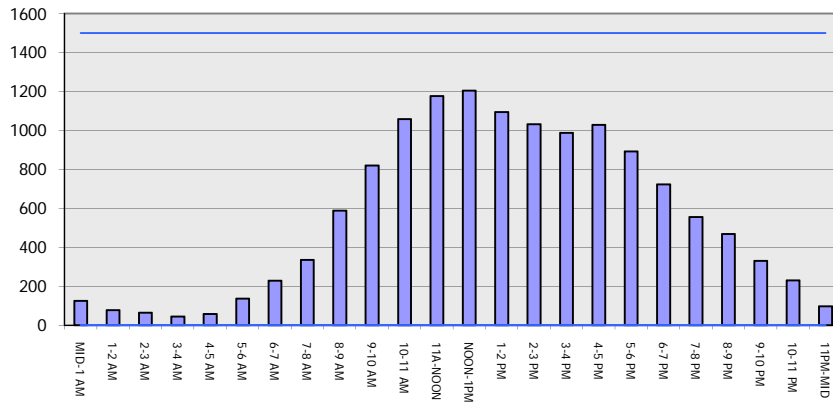
**USH 53: CTH OT TO IH 90 (LA CROSSE COUNTY)
CONTINUOUS (24 HOUR) CLOSURE
DIVERSION ROUTE: STH 157 - CTH S**

MAY
Analyzed for 2009
Construction Season

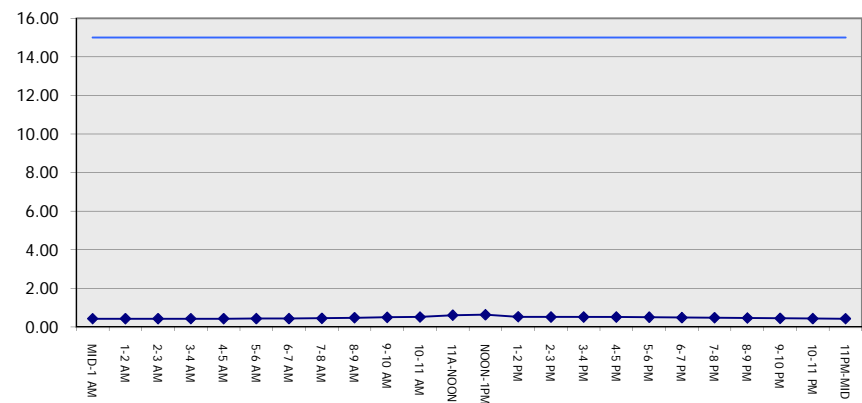
GRAPHICAL REPRESENTATION OF TRAFFIC MODEL INPUT AND OUTPUT

SUNDAY SOUTHBOUND DIRECTION

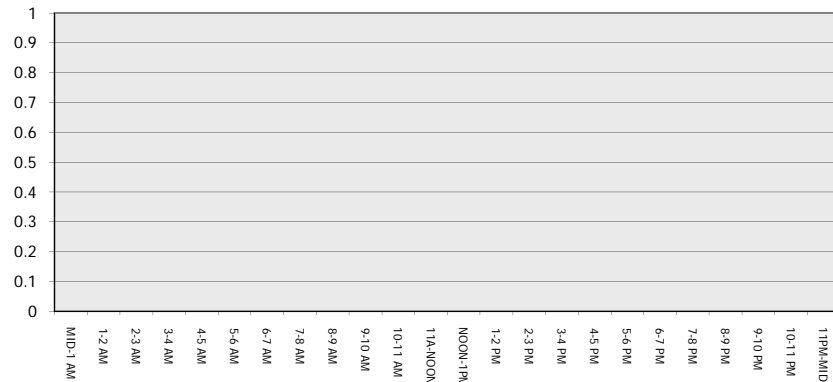
Main Route - Traffic Demand (Vehicles Per Hour)



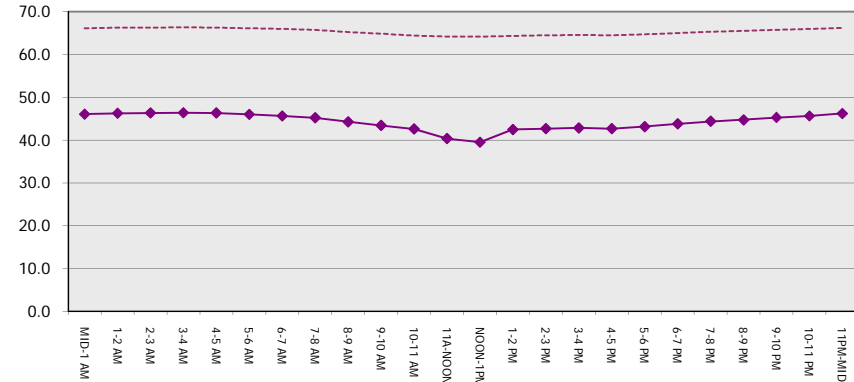
Main Route Average Delay Per Vehicle (Minutes)



Main Route - Average Queue Length (Vehicles)



Main Route - Average Speed (MPH)



USH 53: CTH OT TO IH 90 (LA CROSSE COUNTY) CONTINUOUS (24 HOUR) CLOSURE DIVERSION ROUTE: STH 157 - CTH S	MAY
	Analyzed for 2009 Construction Season

SUMMARY OF TRAFFIC MODEL OUTPUT

SUNDAY NORTHBOUND DIRECTION

TIME OF DAY	FLOWS AND CAPACITY IN VEH/HR								AVERAGE SPEEDS IN MPH						
	MAIN		DIVERSION		SITE CAPA CITY	FLOW MAIN ROUTE	FLOW DIVER -TING	TOTAL DIVN FLOW	AV.DEL PER VEH (MINS)	AVERAGE QUEUE (VEH)	MAIN ROUTE		SITE	ALTERNATE ROUTE	
	DEMAND FLOW	PCT HEAVY	NORMAL FLOW	PCT HEAVY							WITHOUT WORK ZN	WITH WORK ZN		WITHOUT WORK ZN	WITH WORK ZN
MID-1 AM	190	0.0	69	0.0	1500	190	0	69	0.44	0	66.0	45.8	44.7	19.3	19.3
1-2 AM	121	0.0	45	0.0	1500	121	0	45	0.43	0	66.1	46.1	45.0	19.5	19.5
2-3 AM	97	0.0	36	0.0	1500	97	0	36	0.43	0	66.2	46.2	45.1	19.6	19.6
3-4 AM	62	0.0	22	0.0	1500	62	0	22	0.43	0	66.3	46.3	45.3	19.7	19.7
4-5 AM	45	0.0	16	0.0	1500	45	0	16	0.43	0	66.3	46.4	45.3	19.7	19.7
5-6 AM	59	0.0	21	0.0	1500	59	0	21	0.43	0	66.3	46.3	45.3	19.7	19.7
6-7 AM	123	0.0	45	0.0	1500	123	0	45	0.43	0	66.1	46.1	45.0	19.5	19.5
7-8 AM	289	0.0	106	0.0	1500	289	0	106	0.45	0	65.8	45.4	44.3	19.1	19.1
8-9 AM	364	0.0	133	0.0	1500	364	0	133	0.46	0	65.7	45.1	44.0	18.8	18.8
9-10 AM	614	0.0	224	0.0	1500	614	0	224	0.48	0	65.3	44.2	43.1	18.1	18.1
10-11 AM	770	0.0	282	0.0	1500	770	0	282	0.50	0	65.0	43.6	42.5	17.6	17.6
11A-NOON	937	0.0	343	0.0	1500	937	0	343	0.51	0	64.6	43.0	41.9	17.2	17.2
NOON-1PM	1079	0.0	394	0.0	1500	1079	0	394	0.53	0	64.4	42.5	41.4	16.8	16.8
1-2 PM	1059	0.0	387	0.0	1500	1059	0	387	0.52	0	64.4	42.6	41.5	16.8	16.8
2-3 PM	1028	0.0	375	0.0	1500	1028	0	375	0.52	0	64.5	42.7	41.6	16.9	16.9
3-4 PM	1036	0.0	378	0.0	1500	1036	0	378	0.52	0	64.5	42.7	41.5	16.9	16.9
4-5 PM	1032	0.0	377	0.0	1500	1032	0	377	0.52	0	64.5	42.7	41.5	16.9	16.9
5-6 PM	965	0.0	353	0.0	1500	965	0	353	0.52	0	64.6	42.9	41.8	17.1	17.1
6-7 PM	865	0.0	317	0.0	1500	865	0	317	0.51	0	64.8	43.3	42.2	17.4	17.4
7-8 PM	717	0.0	262	0.0	1500	717	0	262	0.49	0	65.0	43.8	42.7	17.8	17.8
8-9 PM	573	0.0	210	0.0	1500	573	0	210	0.48	0	65.3	44.3	43.2	18.2	18.2
9-10 PM	413	0.0	151	0.0	1500	413	0	151	0.46	0	65.6	45.0	43.8	18.7	18.7
10-11 PM	271	0.0	99	0.0	1500	271	0	99	0.45	0	65.9	45.5	44.4	19.1	19.1
11PM-MID	154	0.0	57	0.0	1500	154	0	57	0.44	0	66.1	46.0	44.9	19.4	19.4

----- SITE BREAKDOWN DELAYS -----	
BREAKDOWN DURATION (MINS)	0
RANGE OF QUEUE DELAY - MIN	0.0
(VEH-H) MAX	0.0
RANGE OF DIVN DELAY - MIN	0.0
(VEH-H) MAX	0.0
AV BREAKDOWNS PER DAY	0.00
AV QUEUE DELAY/DAY (VEH-H)	0.0
AV DIVN DELAY/DAY (VEH-H)	0.0
AV TOTAL DELAY/DAY (VEH-H)	0.0

----- SITE ACCIDENT DELAYS -----	
ACCIDENT DURATION (MINS)	0
RANGE OF QUEUE DELAY - MIN	0.0
(VEH-H) MAX	0.0
RANGE OF DIVN DELAY - MIN	0.0
(VEH-H) MAX	0.0
AV ACCIDENTS PER DAY	0.00
AV QUEUE DELAY/DAY (VEH-H)	0.0
AV DIVN DELAY/DAY (VEH-H)	0.0
AV TOTAL DELAY/DAY (VEH-H)	0.0

AVERAGE ACCIDENT NUMBERS (PIA/DAY)	
MAIN ROUTE WITHOUT WORKS	0.0023
MAIN ROUTE WITH WORKS	0.0014
DIVERSION	0.0077

PIA: Personal Injury Accidents

IMPACTS ON ROAD USERS	
ROAD USER COSTS PER DAY (DOLLARS)	\$1,657
CONGESTED HOURS PER DAY*	0

*Delays Exceeding 15 Minutes

**USH 53: CTH OT TO IH 90 (LA CROSSE COUNTY)
 CONTINUOUS (24 HOUR) CLOSURE
 DIVERSION ROUTE: STH 157 - CTH S**

MAY
 Analyzed for 2009
 Construction Season

GRAPHICAL REPRESENTATION OF TRAFFIC MODEL INPUT AND OUTPUT
SUNDAY NORTHBOUND DIRECTION

