

<b>USH 53: CTH OT TO IH 90 (LA CROSSE COUNTY)</b> <b>CONTINUOUS (24 HOUR) CLOSURE</b> <b>DIVERSION ROUTE: STH 157 - CTH S</b>	<b>MAY</b>
	Analyzed for 2009 Construction Season

**SUMMARY OF TRAFFIC MODEL OUTPUT**

**SATURDAY SOUTHBOUND DIRECTION**

TIME OF DAY	FLOWS AND CAPACITY IN VEH/HR						AVERAGE SPEEDS IN MPH								
	MAIN ROUTE		ALTERNATE ROUTE		SITE CAPA CITY	FLOW MAIN ROUTE	FLOW DIVER -TING	TOTAL DIVN FLOW	AV.DEL PER VEH (MINS)	AVERAGE QUEUE (VEH)	MAIN ROUTE		ALTERNATE ROUTE		
	DEMAND FLOW	PCT HEAVY	NORMAL FLOW	PCT HEAVY							WITHOUT WORK ZN	WITH WORK ZN	SITE	WITHOUT WORK ZN	WITH WORK ZN
MID-1 AM	106	0.0	39	0.0	1500	106	0	39	0.43	0	66.2	46.1	45.1	19.6	19.6
1-2 AM	67	0.0	24	0.0	1500	67	0	24	0.43	0	66.3	46.3	45.2	19.7	19.7
2-3 AM	53	0.0	19	0.0	1500	53	0	19	0.43	0	66.3	46.4	45.3	19.7	19.7
3-4 AM	53	0.0	19	0.0	1500	53	0	19	0.43	0	66.3	46.4	45.3	19.7	19.7
4-5 AM	100	0.0	37	0.0	1500	100	0	37	0.43	0	66.2	46.1	45.1	19.6	19.6
5-6 AM	204	0.0	74	0.0	1500	204	0	74	0.44	0	66.0	45.8	44.6	19.3	19.3
6-7 AM	375	0.0	137	0.0	1500	375	0	137	0.46	0	65.7	45.1	44.0	18.8	18.8
7-8 AM	562	0.0	206	0.0	1500	562	0	206	0.48	0	65.3	44.4	43.3	18.3	18.3
8-9 AM	878	0.0	321	0.0	1500	878	0	321	0.51	0	64.8	43.2	42.1	17.3	17.3
9-10 AM	1097	0.0	401	0.0	1500	1097	0	401	0.53	0	64.3	42.5	41.4	16.7	16.7
10-11 AM	1167	0.0	426	0.0	1500	1167	0	426	0.59	0	64.2	40.7	39.6	16.5	16.5
11A-NOON	1332	0.0	487	0.0	1500	1332	0	487	0.81	0	63.9	35.8	34.7	16.0	16.0
NOON-1PM	1247	0.0	456	0.0	1500	1247	0	456	0.70	0	64.1	38.2	37.0	16.3	16.3
1-2 PM	1192	0.0	435	0.0	1500	1192	0	435	0.63	0	64.1	39.9	38.7	16.5	16.5
2-3 PM	1116	0.0	408	0.0	1500	1116	0	408	0.53	0	64.3	42.4	41.3	16.6	16.6
3-4 PM	1026	0.0	375	0.0	1500	1026	0	375	0.52	0	64.5	42.7	41.6	16.9	16.9
4-5 PM	1016	0.0	371	0.0	1500	1016	0	371	0.52	0	64.5	42.7	41.6	17.0	17.0
5-6 PM	940	0.0	343	0.0	1500	940	0	343	0.51	0	64.6	43.0	41.9	17.2	17.2
6-7 PM	922	0.0	337	0.0	1500	922	0	337	0.51	0	64.6	43.0	42.0	17.2	17.2
7-8 PM	708	0.0	259	0.0	1500	708	0	259	0.49	0	65.1	43.8	42.7	17.8	17.8
8-9 PM	546	0.0	200	0.0	1500	546	0	200	0.48	0	65.4	44.4	43.3	18.3	18.3
9-10 PM	480	0.0	176	0.0	1500	480	0	176	0.47	0	65.5	44.7	43.6	18.5	18.5
10-11 PM	336	0.0	123	0.0	1500	336	0	123	0.46	0	65.8	45.2	44.2	18.9	18.9
11PM-MID	214	0.0	78	0.0	1500	214	0	78	0.44	0	66.0	45.7	44.6	19.3	19.3

*----- SITE BREAKDOWN DELAYS -----*	
BREAKDOWN DURATION (MINS)	0
RANGE OF QUEUE DELAY - MIN (VEH-H) MAX	0.0
RANGE OF DIVN DELAY - MIN (VEH-H) MAX	0.0
AV BREAKDOWNS PER DAY	0.00
AV QUEUE DELAY/DAY (VEH-H)	0.0
AV DIVN DELAY/DAY (VEH-H)	0.0
AV TOTAL DELAY/DAY (VEH-H)	0.0

*----- SITE ACCIDENT DELAYS -----*	
ACCIDENT DURATION (MINS)	0
RANGE OF QUEUE DELAY - MIN (VEH-H) MAX	0.0
RANGE OF DIVN DELAY - MIN (VEH-H) MAX	0.0
AV ACCIDENTS PER DAY	0.00
AV QUEUE DELAY/DAY (VEH-H)	0.0
AV DIVN DELAY/DAY (VEH-H)	0.0
AV TOTAL DELAY/DAY (VEH-H)	0.0

AVERAGE ACCIDENT NUMBERS (PIA/DAY)	
MAIN ROUTE WITHOUT WORKS	0.0028
MAIN ROUTE WITH WORKS	0.0017
DIVERSION	0.0094

PIA: Personal Injury Accidents

IMPACTS ON ROAD USERS	
ROAD USER COSTS PER DAY ( DOLLARS)	\$2,250
CONGESTED HOURS PER DAY*	0

\*Delays Exceeding 15 Minutes

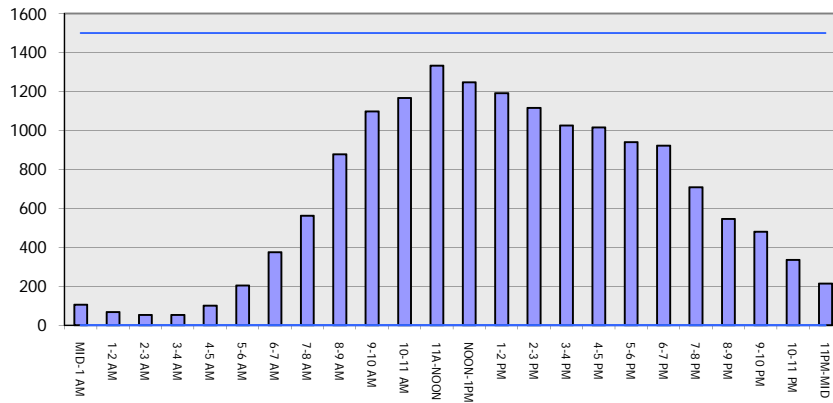
**USH 53: CTH OT TO IH 90 (LA CROSSE COUNTY)  
 CONTINUOUS (24 HOUR) CLOSURE  
 DIVERSION ROUTE: STH 157 - CTH S**

**MAY**  
 Analyzed for 2009  
 Construction Season

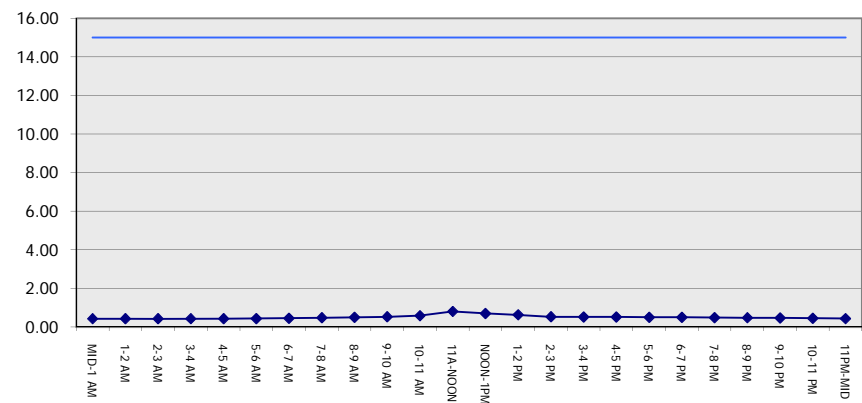
**GRAPHICAL REPRESENTATION OF TRAFFIC MODEL INPUT AND OUTPUT**

**SATURDAY SOUTHBOUND DIRECTION**

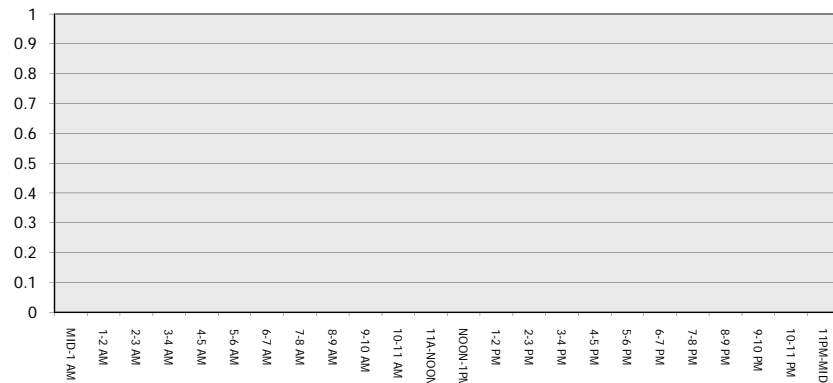
**Main Route - Traffic Demand (Vehicles Per Hour)**



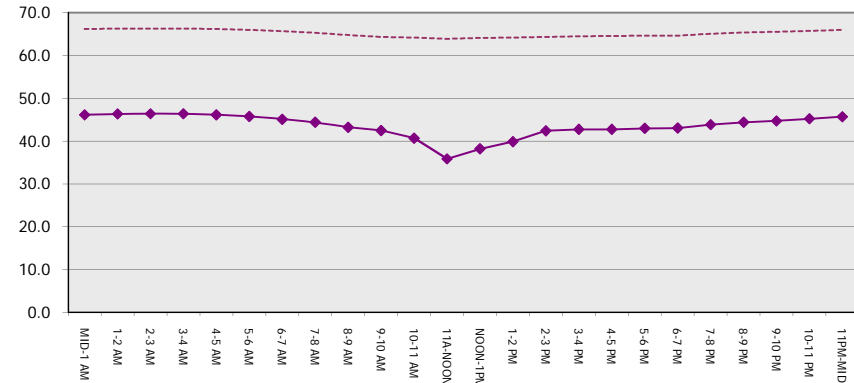
**Main Route Average Delay Per Vehicle (Minutes)**



**Main Route - Average Queue Length (Vehicles)**



**Main Route - Average Speed (MPH)**



<b>USH 53: CTH OT TO IH 90 (LA CROSSE COUNTY)</b> <b>CONTINUOUS (24 HOUR) CLOSURE</b> <b>DIVERSION ROUTE: STH 157 - CTH S</b>	<b>MAY</b>
	Analyzed for 2009 Construction Season

**SUMMARY OF TRAFFIC MODEL OUTPUT**

SATURDAY NORTHBOUND DIRECTION

TIME OF DAY	FLOWS AND CAPACITY IN VEH/HR								AVERAGE SPEEDS IN MPH						
	MAIN		DIVERSION		SITE CAPA CITY	FLOW MAIN ROUTE	FLOW DIVER -TING	TOTAL DIVN FLOW	AV.DEL PER VEH (MINS)	AVERAGE QUEUE (VEH)	MAIN ROUTE		SITE	ALTERNATE ROUTE	
	DEMAND FLOW	PCT HEAVY	NORMAL FLOW	PCT HEAVY							WITHOUT WORK ZN	WITH WORK ZN		WITHOUT WORK ZN	WITH WORK ZN
MID-1 AM	172	0.0	63	0.0	1500	172	0	63	0.44	0	66.1	45.9	44.8	19.4	19.4
1-2 AM	112	0.0	41	0.0	1500	112	0	41	0.43	0	66.2	46.1	45.0	19.6	19.6
2-3 AM	90	0.0	32	0.0	1500	90	0	32	0.43	0	66.2	46.2	45.1	19.6	19.6
3-4 AM	70	0.0	25	0.0	1500	70	0	25	0.43	0	66.3	46.3	45.2	19.7	19.7
4-5 AM	84	0.0	30	0.0	1500	84	0	30	0.43	0	66.2	46.3	45.1	19.6	19.6
5-6 AM	102	0.0	38	0.0	1500	102	0	38	0.43	0	66.2	46.1	45.1	19.6	19.6
6-7 AM	248	0.0	90	0.0	1500	248	0	90	0.45	0	66.0	45.6	44.5	19.2	19.2
7-8 AM	413	0.0	151	0.0	1500	413	0	151	0.46	0	65.6	45.0	43.8	18.7	18.7
8-9 AM	614	0.0	224	0.0	1500	614	0	224	0.48	0	65.3	44.2	43.1	18.1	18.1
9-10 AM	819	0.0	299	0.0	1500	819	0	299	0.50	0	64.8	43.4	42.4	17.5	17.5
10-11 AM	980	0.0	358	0.0	1500	980	0	358	0.52	0	64.6	42.8	41.7	17.1	17.1
11A-NOON	1120	0.0	410	0.0	1500	1120	0	410	0.53	0	64.3	42.3	41.2	16.6	16.6
NOON-1PM	1094	0.0	400	0.0	1500	1094	0	400	0.53	0	64.3	42.5	41.4	16.7	16.7
1-2 PM	1047	0.0	382	0.0	1500	1047	0	382	0.52	0	64.5	42.6	41.5	16.9	16.9
2-3 PM	1072	0.0	392	0.0	1500	1072	0	392	0.53	0	64.4	42.5	41.4	16.8	16.8
3-4 PM	1123	0.0	411	0.0	1500	1123	0	411	0.54	0	64.3	42.2	41.0	16.6	16.6
4-5 PM	1194	0.0	436	0.0	1500	1194	0	436	0.63	0	64.1	39.8	38.6	16.5	16.5
5-6 PM	1062	0.0	389	0.0	1500	1062	0	389	0.53	0	64.4	42.6	41.5	16.8	16.8
6-7 PM	901	0.0	330	0.0	1500	901	0	330	0.51	0	64.7	43.2	42.0	17.3	17.3
7-8 PM	756	0.0	276	0.0	1500	756	0	276	0.50	0	65.0	43.7	42.5	17.7	17.7
8-9 PM	690	0.0	253	0.0	1500	690	0	253	0.49	0	65.1	43.9	42.8	17.9	17.9
9-10 PM	580	0.0	212	0.0	1500	580	0	212	0.48	0	65.3	44.3	43.2	18.2	18.2
10-11 PM	441	0.0	161	0.0	1500	441	0	161	0.47	0	65.6	44.8	43.7	18.6	18.6
11PM-MID	303	0.0	111	0.0	1500	303	0	111	0.45	0	65.8	45.3	44.3	19.0	19.0

*----- SITE BREAKDOWN DELAYS -----*	
BREAKDOWN DURATION (MINS)	0
RANGE OF QUEUE DELAY - MIN	0.0
(VEH-H) MAX	0.0
RANGE OF DIVN DELAY - MIN	0.0
(VEH-H) MAX	0.0
AV BREAKDOWNS PER DAY	0.00
AV QUEUE DELAY/DAY (VEH-H)	0.0
AV DIVN DELAY/DAY (VEH-H)	0.0
AV TOTAL DELAY/DAY (VEH-H)	0.0

*----- SITE ACCIDENT DELAYS -----*	
ACCIDENT DURATION (MINS)	0
RANGE OF QUEUE DELAY - MIN	0.0
(VEH-H) MAX	0.0
RANGE OF DIVN DELAY - MIN	0.0
(VEH-H) MAX	0.0
AV ACCIDENTS PER DAY	0.00
AV QUEUE DELAY/DAY (VEH-H)	0.0
AV DIVN DELAY/DAY (VEH-H)	0.0
AV TOTAL DELAY/DAY (VEH-H)	0.0

AVERAGE ACCIDENT NUMBERS (PIA/DAY)	
MAIN ROUTE WITHOUT WORKS	0.0026
MAIN ROUTE WITH WORKS	0.0016
DIVERSION	0.0090

PIA: Personal Injury Accidents

IMPACTS ON ROAD USERS	
ROAD USER COSTS PER DAY ( DOLLARS)	\$1,992
CONGESTED HOURS PER DAY*	0

\*Delays Exceeding 15 Minutes

**USH 53: CTH OT TO IH 90 (LA CROSSE COUNTY)  
 CONTINUOUS (24 HOUR) CLOSURE  
 DIVERSION ROUTE: STH 157 - CTH S**

**MAY**  
 Analyzed for 2009  
 Construction Season

**GRAPHICAL REPRESENTATION OF TRAFFIC MODEL INPUT AND OUTPUT**  
**SATURDAY NORTHBOUND DIRECTION**

