

<b>IH 90: USH 53 TO STH 16 (LA CROSSE COUNTY)</b> <b>CONTINUOUS (24 HOUR) CLOSURE</b> <b>DIVERSION ROUTE: USH 53 - STH 157 - STH 35</b>	<b>OCTOBER</b>
	Analyzed for 2009 Construction Season

**SUMMARY OF TRAFFIC MODEL OUTPUT**

MON-THUR                      WESTBOUND DIRECTION

TIME OF DAY	FLOWS AND CAPACITY IN VEH/HR							AVERAGE SPEEDS IN MPH							
	MAIN ROUTE		ALTERNATE ROUTE		SITE CAPA CITY	FLOW MAIN ROUTE	FLOW DIVER -TING	TOTAL DIVN FLOW	AV.DEL PER VEH (MINS)	AVERAGE QUEUE (VEH)	MAIN ROUTE		ALTERNATE ROUTE		
	DEMAND FLOW	PCT HEAVY	NORMAL FLOW	PCT HEAVY							WITHOUT WORK ZN	WITH WORK ZN	SITE	WITHOUT WORK ZN	WITH WORK ZN
MID-1 AM	221	0.0	70	0.0	1500	221	0	70	0.44	0	66.0	49.7	44.6	38.6	38.6
1-2 AM	192	0.0	61	0.0	1500	192	0	61	0.44	0	66.0	49.9	44.7	38.8	38.8
2-3 AM	187	0.0	59	0.0	1500	187	0	59	0.44	0	66.0	49.9	44.7	38.8	38.8
3-4 AM	183	0.0	58	0.0	1500	183	0	58	0.44	0	66.1	49.9	44.8	38.8	38.8
4-5 AM	246	0.0	78	0.0	1500	246	0	78	0.45	0	66.0	49.7	44.5	38.5	38.5
5-6 AM	404	0.0	129	0.0	1500	404	0	129	0.46	0	65.6	49.1	43.9	37.6	37.6
6-7 AM	647	0.0	205	0.0	1500	647	0	205	0.49	0	65.2	48.2	43.0	36.5	36.5
7-8 AM	891	0.0	283	0.0	1500	891	0	283	0.51	0	64.7	47.4	42.0	35.1	35.1
8-9 AM	1046	0.0	333	0.0	1500	1046	0	333	0.52	0	64.5	46.8	41.5	34.3	34.3
9-10 AM	1096	0.0	348	0.0	1500	1096	0	348	0.53	0	64.3	46.7	41.4	34.2	34.2
10-11 AM	1068	0.0	339	0.0	1500	1068	0	339	0.53	0	64.4	46.8	41.4	34.3	34.3
11A-NOON	1104	0.0	351	0.0	1500	1104	0	351	0.53	0	64.3	46.6	41.3	34.1	34.1
NOON-1PM	1126	0.0	358	0.0	1500	1126	0	358	0.54	0	64.3	46.3	41.0	34.0	34.0
1-2 PM	1193	0.0	379	0.0	1500	1193	0	379	0.63	0	64.1	44.3	38.7	33.6	33.6
2-3 PM	1328	0.0	422	0.0	1500	1328	0	422	0.80	0	63.9	40.7	34.8	32.9	32.9
3-4 PM	1397	0.0	443	0.0	1499	1397	0	443	0.89	0	63.8	39.1	33.0	32.6	32.6
4-5 PM	1531	0.0	486	0.0	1499	1531	0	486	1.74	20	63.5	28.5	30.8	31.9	31.9
5-6 PM	1255	0.0	399	0.0	1500	1255	0	399	0.78	2	64.0	41.1	36.8	33.3	33.3
6-7 PM	1012	0.0	322	0.0	1500	1012	0	322	0.52	0	64.5	46.9	41.6	34.5	34.5
7-8 PM	761	0.0	241	0.0	1500	761	0	241	0.50	0	65.0	47.8	42.5	35.8	35.8
8-9 PM	597	0.0	190	0.0	1500	597	0	190	0.48	0	65.3	48.4	43.2	36.7	36.7
9-10 PM	479	0.0	152	0.0	1500	479	0	152	0.47	0	65.5	48.8	43.6	37.3	37.3
10-11 PM	376	0.0	120	0.0	1500	376	0	120	0.46	0	65.7	49.2	44.0	37.8	37.8
11PM-MID	294	0.0	93	0.0	1500	294	0	93	0.45	0	65.8	49.5	44.3	38.3	38.3

*----- SITE BREAKDOWN DELAYS -----*	
BREAKDOWN DURATION (MINS)	0
RANGE OF QUEUE DELAY - MIN	0.0
(VEH-H) MAX	0.0
RANGE OF DIVN DELAY - MIN	0.0
(VEH-H) MAX	0.0
AV BREAKDOWNS PER DAY	0.00
AV QUEUE DELAY/DAY (VEH-H)	0.0
AV DIVN DELAY/DAY (VEH-H)	0.0
AV TOTAL DELAY/DAY (VEH-H)	0.0

*----- SITE ACCIDENT DELAYS -----*	
ACCIDENT DURATION (MINS)	0
RANGE OF QUEUE DELAY - MIN	0.0
(VEH-H) MAX	0.0
RANGE OF DIVN DELAY - MIN	0.0
(VEH-H) MAX	0.0
AV ACCIDENTS PER DAY	0.00
AV QUEUE DELAY/DAY (VEH-H)	0.0
AV DIVN DELAY/DAY (VEH-H)	0.0
AV TOTAL DELAY/DAY (VEH-H)	0.0

AVERAGE ACCIDENT NUMBERS (PIA/DAY)	
MAIN ROUTE WITHOUT WORKS	0.0044
MAIN ROUTE WITH WORKS	0.0032
DIVERSION	0.0221

PIA: Personal Injury Accidents

IMPACTS ON ROAD USERS	
ROAD USER COSTS PER DAY ( DOLLARS)	\$2,615
CONGESTED HOURS PER DAY*	0

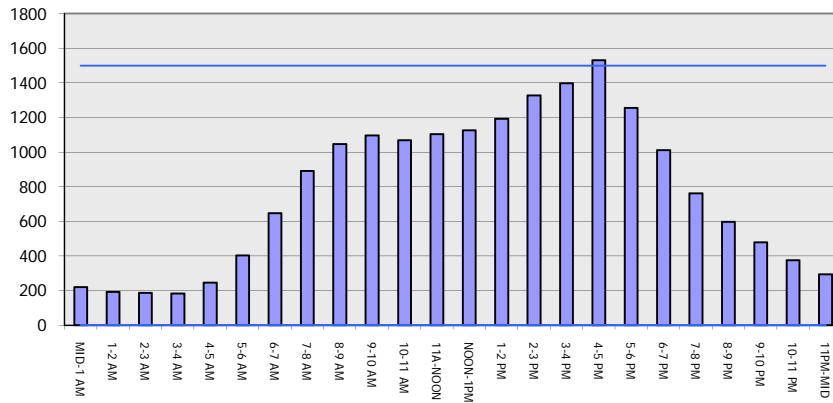
\*Delays Exceeding 15 Minutes

**IH 90: USH 53 TO STH 16 (LA CROSSE COUNTY)  
 CONTINUOUS (24 HOUR) CLOSURE  
 DIVERSION ROUTE: USH 53 - STH 157 - STH 35**

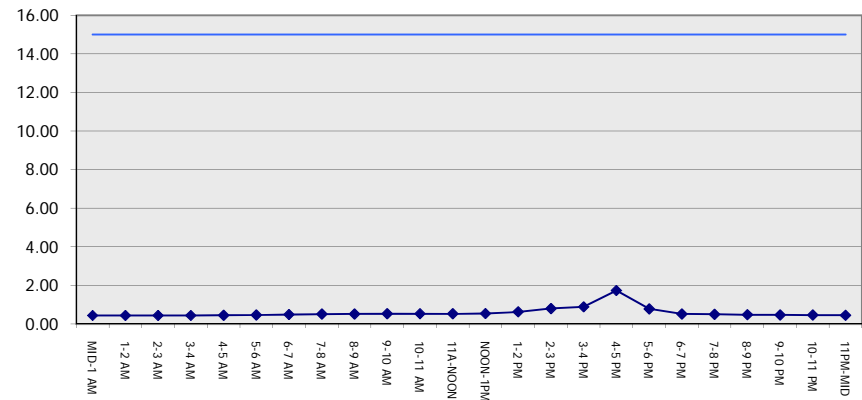
**OCTOBER**  
 Analyzed for 2009  
 Construction Season

**GRAPHICAL REPRESENTATION OF TRAFFIC MODEL INPUT AND OUTPUT**  
**MON-THUR WESTBOUND DIRECTION**

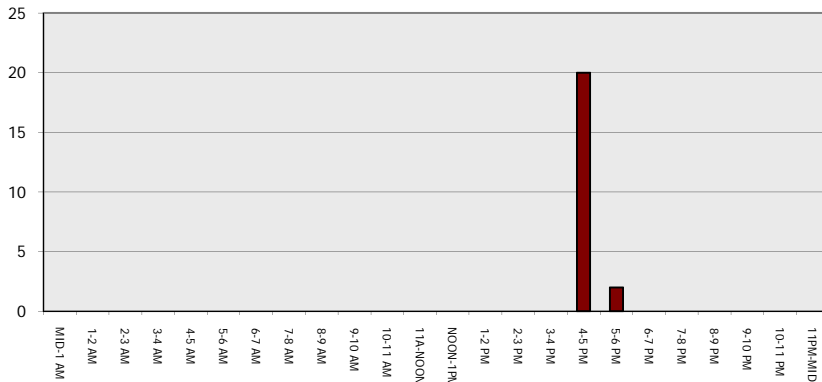
**Main Route - Traffic Demand (Vehicles Per Hour)**



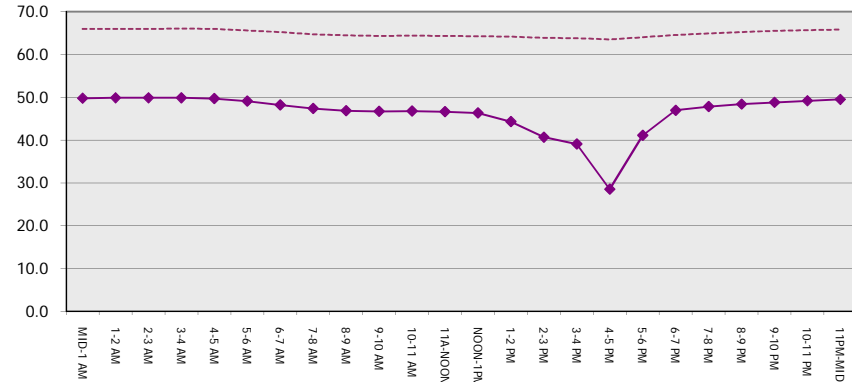
**Main Route Average Delay Per Vehicle (Minutes)**



**Main Route - Average Queue Length (Vehicles)**



**Main Route - Average Speed (MPH)**



<b>IH 90: USH 53 TO STH 16 (LA CROSSE COUNTY)</b> <b>CONTINUOUS (24 HOUR) CLOSURE</b> <b>DIVERSION ROUTE: USH 53 - STH 157 - STH 35</b>	<b>OCTOBER</b>
	Analyzed for 2009 Construction Season

**SUMMARY OF TRAFFIC MODEL OUTPUT**

MON-THUR                      EASTBOUND DIRECTION

TIME OF DAY	FLOWS AND CAPACITY IN VEH/HR								AVERAGE SPEEDS IN MPH						
	MAIN		DIVERSION		SITE CAPA CITY	FLOW MAIN ROUTE	FLOW DIVER -TING	TOTAL DIVN FLOW	AV.DEL PER VEH (MINS)	AVERAGE QUEUE (VEH)	MAIN ROUTE		SITE	ALTERNATE ROUTE	
	DEMAND FLOW	PCT HEAVY	NORMAL FLOW	PCT HEAVY							WITHOUT WORK ZN	WITH WORK ZN		WITHOUT WORK ZN	WITH WORK ZN
MID-1 AM	181	0.0	57	0.0	1500	181	0	57	0.44	0	66.1	49.9	44.8	38.8	38.8
1-2 AM	158	0.0	51	0.0	1500	158	0	51	0.44	0	66.1	50.0	44.8	38.9	38.9
2-3 AM	177	0.0	56	0.0	1500	177	0	56	0.44	0	66.1	49.9	44.8	38.8	38.8
3-4 AM	232	0.0	74	0.0	1500	232	0	74	0.45	0	66.0	49.7	44.5	38.6	38.6
4-5 AM	315	0.0	99	0.0	1500	315	0	99	0.45	0	65.8	49.4	44.2	38.1	38.1
5-6 AM	486	0.0	154	0.0	1500	486	0	154	0.47	0	65.5	48.7	43.5	37.3	37.3
6-7 AM	818	0.0	260	0.0	1500	818	0	260	0.50	0	64.8	47.6	42.4	35.5	35.5
7-8 AM	1052	0.0	334	0.0	1500	1052	0	334	0.52	0	64.4	46.8	41.5	34.3	34.3
8-9 AM	938	0.0	297	0.0	1500	938	0	297	0.51	0	64.6	47.2	41.9	35.0	35.0
9-10 AM	1005	0.0	320	0.0	1500	1005	0	320	0.52	0	64.5	46.9	41.7	34.6	34.6
10-11 AM	1052	0.0	334	0.0	1500	1052	0	334	0.52	0	64.4	46.8	41.5	34.3	34.3
11A-NOON	1053	0.0	334	0.0	1500	1053	0	334	0.52	0	64.4	46.8	41.5	34.3	34.3
NOON-1PM	1106	0.0	351	0.0	1500	1106	0	351	0.53	0	64.3	46.6	41.3	34.1	34.1
1-2 PM	1229	0.0	391	0.0	1500	1229	0	391	0.67	0	64.1	43.3	37.6	33.4	33.4
2-3 PM	1324	0.0	420	0.0	1500	1324	0	420	0.80	0	63.9	40.8	34.8	33.0	33.0
3-4 PM	1342	0.0	426	0.0	1500	1342	0	426	0.82	0	63.9	40.4	34.4	32.9	32.9
4-5 PM	1389	0.0	441	0.0	1500	1389	0	441	0.88	0	63.8	39.2	33.2	32.6	32.6
5-6 PM	1223	0.0	389	0.0	1500	1223	0	389	0.67	0	64.1	43.5	37.8	33.5	33.5
6-7 PM	946	0.0	300	0.0	1500	946	0	300	0.51	0	64.6	47.2	41.9	34.9	34.9
7-8 PM	732	0.0	232	0.0	1500	732	0	232	0.49	0	65.0	47.9	42.7	36.0	36.0
8-9 PM	599	0.0	190	0.0	1500	599	0	190	0.48	0	65.3	48.4	43.2	36.7	36.7
9-10 PM	509	0.0	161	0.0	1500	509	0	161	0.47	0	65.5	48.7	43.5	37.1	37.1
10-11 PM	379	0.0	121	0.0	1500	379	0	121	0.46	0	65.7	49.2	44.0	37.8	37.8
11PM-MID	292	0.0	93	0.0	1500	292	0	93	0.45	0	65.8	49.5	44.3	38.3	38.3

*----- SITE BREAKDOWN DELAYS -----*	
BREAKDOWN DURATION (MINS)	0
RANGE OF QUEUE DELAY - MIN	0.0
(VEH-H) MAX	0.0
RANGE OF DIVN DELAY - MIN	0.0
(VEH-H) MAX	0.0
AV BREAKDOWNS PER DAY	0.00
AV QUEUE DELAY/DAY (VEH-H)	0.0
AV DIVN DELAY/DAY (VEH-H)	0.0
AV TOTAL DELAY/DAY (VEH-H)	0.0

*----- SITE ACCIDENT DELAYS -----*	
ACCIDENT DURATION (MINS)	0
RANGE OF QUEUE DELAY - MIN	0.0
(VEH-H) MAX	0.0
RANGE OF DIVN DELAY - MIN	0.0
(VEH-H) MAX	0.0
AV ACCIDENTS PER DAY	0.00
AV QUEUE DELAY/DAY (VEH-H)	0.0
AV DIVN DELAY/DAY (VEH-H)	0.0
AV TOTAL DELAY/DAY (VEH-H)	0.0

AVERAGE ACCIDENT NUMBERS (PIA/DAY)	
MAIN ROUTE WITHOUT WORKS	0.0044
MAIN ROUTE WITH WORKS	0.0032
DIVERSION	0.0219

PIA: Personal Injury Accidents

IMPACTS ON ROAD USERS	
ROAD USER COSTS PER DAY ( DOLLARS)	\$2,269
CONGESTED HOURS PER DAY*	0

\*Delays Exceeding 15 Minutes

**IH 90: USH 53 TO STH 16 (LA CROSSE COUNTY)  
 CONTINUOUS (24 HOUR) CLOSURE  
 DIVERSION ROUTE: USH 53 - STH 157 - STH 35**

**OCTOBER**  
 Analyzed for 2009  
 Construction Season

**GRAPHICAL REPRESENTATION OF TRAFFIC MODEL INPUT AND OUTPUT**  
**MON-THUR EASTBOUND DIRECTION**

