

IH 90: USH 53 TO STH 16 (LA CROSSE COUNTY) CONTINUOUS (24 HOUR) CLOSURE DIVERSION ROUTE: USH 53 - STH 157 - STH 35	MAY
	Analyzed for 2009 Construction Season

SUMMARY OF TRAFFIC MODEL OUTPUT

SUNDAY WESTBOUND DIRECTION

TIME OF DAY	FLOWS AND CAPACITY IN VEH/HR						AVERAGE SPEEDS IN MPH								
	MAIN ROUTE		ALTERNATE ROUTE		SITE CAPA CITY	FLOW MAIN ROUTE	FLOW DIVER -TING	TOTAL DIVN FLOW	AV.DEL PER VEH (MINS)	AVERAGE QUEUE (VEH)	MAIN ROUTE		ALTERNATE ROUTE		
	DEMAND FLOW	PCT HEAVY	NORMAL FLOW	PCT HEAVY							WITHOUT WORK ZN	WITH WORK ZN	SITE	WITHOUT WORK ZN	WITH WORK ZN
MID-1 AM	224	0.0	71	0.0	1500	224	0	71	0.44	0	66.0	49.7	44.6	38.6	38.6
1-2 AM	121	0.0	39	0.0	1500	121	0	39	0.43	0	66.1	50.1	45.0	39.1	39.1
2-3 AM	83	0.0	26	0.0	1500	83	0	26	0.43	0	66.3	50.2	45.1	39.3	39.3
3-4 AM	68	0.0	21	0.0	1500	68	0	21	0.43	0	66.3	50.3	45.2	39.4	39.4
4-5 AM	93	0.0	29	0.0	1500	93	0	29	0.43	0	66.2	50.2	45.1	39.2	39.2
5-6 AM	85	0.0	27	0.0	1500	85	0	27	0.43	0	66.2	50.2	45.1	39.3	39.3
6-7 AM	153	0.0	49	0.0	1500	153	0	49	0.44	0	66.1	50.0	44.9	38.9	38.9
7-8 AM	237	0.0	75	0.0	1500	237	0	75	0.45	0	66.0	49.7	44.5	38.5	38.5
8-9 AM	442	0.0	141	0.0	1500	442	0	141	0.47	0	65.6	48.9	43.7	37.4	37.4
9-10 AM	743	0.0	236	0.0	1500	743	0	236	0.49	0	65.0	47.9	42.6	36.0	36.0
10-11 AM	1019	0.0	324	0.0	1500	1019	0	324	0.52	0	64.5	46.9	41.6	34.5	34.5
11A-NOON	1384	0.0	439	0.0	1500	1384	0	439	0.87	0	63.8	39.4	33.3	32.7	32.7
NOON-1PM	1388	0.0	441	0.0	1500	1388	0	441	0.88	0	63.8	39.2	33.3	32.6	32.6
1-2 PM	1447	0.0	460	0.0	1499	1447	0	460	0.96	0	63.7	37.9	31.9	32.4	32.4
2-3 PM	1532	0.0	486	0.0	1499	1532	0	486	1.42	11	63.5	31.7	30.8	31.9	31.9
3-4 PM	1594	0.0	506	0.0	1500	1590	4	510	3.66	74	63.4	17.9	30.8	31.5	31.6
4-5 PM	1642	0.0	521	0.0	1499	1489	153	674	5.28	114	63.3	14.2	30.8	31.3	29.2
5-6 PM	1491	0.0	474	0.0	1499	1462	29	503	4.48	93	63.6	15.6	30.8	32.1	31.8
6-7 PM	1338	0.0	425	0.0	1499	1338	0	425	1.38	20	63.9	32.2	33.7	32.9	32.9
7-8 PM	1256	0.0	399	0.0	1500	1256	0	399	0.71	0	64.0	42.5	36.8	33.3	33.3
8-9 PM	964	0.0	306	0.0	1500	964	0	306	0.52	0	64.6	47.1	41.8	34.8	34.8
9-10 PM	665	0.0	211	0.0	1500	665	0	211	0.49	0	65.1	48.1	42.9	36.3	36.3
10-11 PM	469	0.0	149	0.0	1500	469	0	149	0.47	0	65.5	48.8	43.7	37.3	37.3
11PM-MID	314	0.0	99	0.0	1500	314	0	99	0.45	0	65.8	49.4	44.2	38.1	38.1

----- SITE BREAKDOWN DELAYS -----	
BREAKDOWN DURATION (MINS)	0
RANGE OF QUEUE DELAY - MIN	0.0
(VEH-H) MAX	0.0
RANGE OF DIVN DELAY - MIN	0.0
(VEH-H) MAX	0.0
AV BREAKDOWNS PER DAY	0.00
AV QUEUE DELAY/DAY (VEH-H)	0.0
AV DIVN DELAY/DAY (VEH-H)	0.0
AV TOTAL DELAY/DAY (VEH-H)	0.0

----- SITE ACCIDENT DELAYS -----	
ACCIDENT DURATION (MINS)	0
RANGE OF QUEUE DELAY - MIN	0.0
(VEH-H) MAX	0.0
RANGE OF DIVN DELAY - MIN	0.0
(VEH-H) MAX	0.0
AV ACCIDENTS PER DAY	0.00
AV QUEUE DELAY/DAY (VEH-H)	0.0
AV DIVN DELAY/DAY (VEH-H)	0.0
AV TOTAL DELAY/DAY (VEH-H)	0.0

AVERAGE ACCIDENT NUMBERS (PIA/DAY)	
MAIN ROUTE WITHOUT WORKS	0.0045
MAIN ROUTE WITH WORKS	0.0032
DIVERSION	0.0229

PIA: Personal Injury Accidents

IMPACTS ON ROAD USERS	
ROAD USER COSTS PER DAY (DOLLARS)	\$9,371
CONGESTED HOURS PER DAY*	0

*Delays Exceeding 15 Minutes

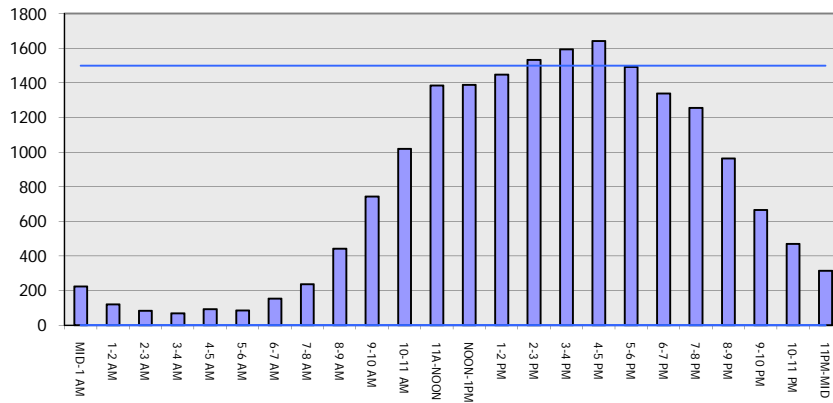
IH 90: USH 53 TO STH 16 (LA CROSSE COUNTY)
CONTINUOUS (24 HOUR) CLOSURE
DIVERSION ROUTE: USH 53 - STH 157 - STH 35

MAY
 Analyzed for 2009
 Construction Season

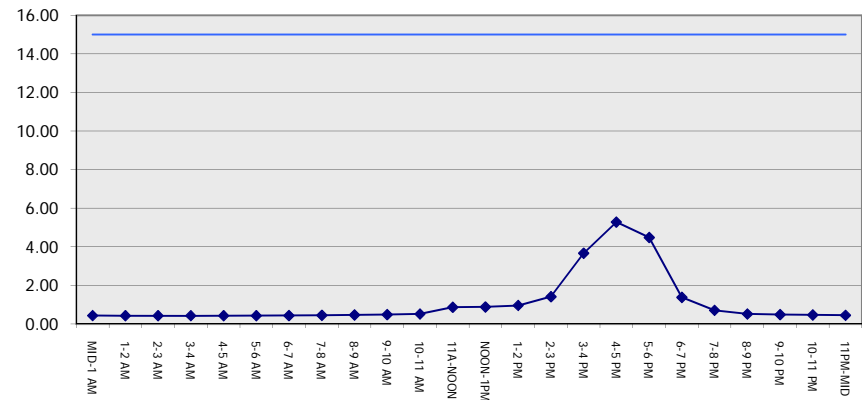
GRAPHICAL REPRESENTATION OF TRAFFIC MODEL INPUT AND OUTPUT

SUNDAY WESTBOUND DIRECTION

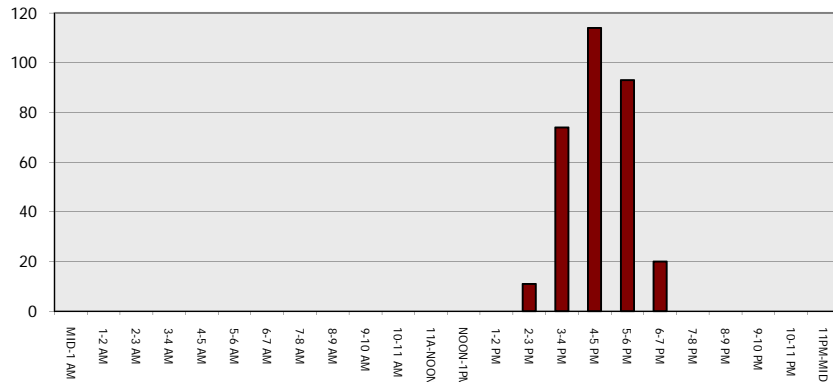
Main Route - Traffic Demand (Vehicles Per Hour)



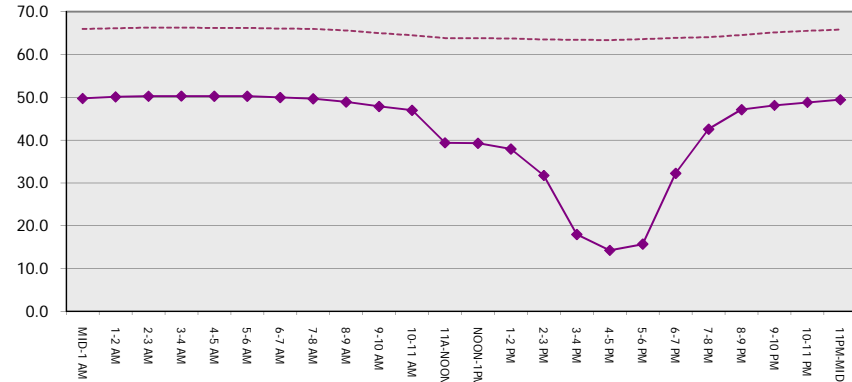
Main Route Average Delay Per Vehicle (Minutes)



Main Route - Average Queue Length (Vehicles)



Main Route - Average Speed (MPH)



IH 90: USH 53 TO STH 16 (LA CROSSE COUNTY) CONTINUOUS (24 HOUR) CLOSURE DIVERSION ROUTE: USH 53 - STH 157 - STH 35	MAY
	Analyzed for 2009 Construction Season

SUMMARY OF TRAFFIC MODEL OUTPUT

SUNDAY EASTBOUND DIRECTION

TIME OF DAY	FLOWS AND CAPACITY IN VEH/HR								AVERAGE SPEEDS IN MPH						
	MAIN		DIVERSION		SITE CAPA CITY	FLOW MAIN ROUTE	FLOW DIVER -TING	TOTAL DIVN FLOW	AV.DEL PER VEH (MINS)	AVERAGE QUEUE (VEH)	MAIN ROUTE		SITE	ALTERNATE ROUTE	
	DEMAND FLOW	PCT HEAVY	NORMAL FLOW	PCT HEAVY							WITHOUT WORK ZN	WITH WORK ZN		WITHOUT WORK ZN	WITH WORK ZN
MID-1 AM	146	0.0	47	0.0	1500	146	0	47	0.44	0	66.1	50.1	44.9	39.0	39.0
1-2 AM	99	0.0	31	0.0	1500	99	0	31	0.43	0	66.2	50.2	45.1	39.2	39.2
2-3 AM	92	0.0	29	0.0	1500	92	0	29	0.43	0	66.2	50.2	45.1	39.2	39.2
3-4 AM	101	0.0	32	0.0	1500	101	0	32	0.43	0	66.2	50.2	45.1	39.2	39.2
4-5 AM	121	0.0	39	0.0	1500	121	0	39	0.43	0	66.1	50.1	45.0	39.1	39.1
5-6 AM	165	0.0	53	0.0	1500	165	0	53	0.44	0	66.1	49.9	44.8	38.9	38.9
6-7 AM	217	0.0	69	0.0	1500	217	0	69	0.44	0	66.0	49.7	44.6	38.6	38.6
7-8 AM	434	0.0	138	0.0	1500	434	0	138	0.46	0	65.6	48.9	43.8	37.5	37.5
8-9 AM	681	0.0	216	0.0	1500	681	0	216	0.49	0	65.1	48.1	42.8	36.3	36.3
9-10 AM	939	0.0	298	0.0	1500	939	0	298	0.51	0	64.6	47.2	41.9	34.9	34.9
10-11 AM	1277	0.0	406	0.0	1499	1277	0	406	0.73	0	64.0	42.0	36.2	33.2	33.2
11A-NOON	1473	0.0	468	0.0	1499	1473	0	468	1.00	0	63.7	37.3	31.4	32.2	32.2
NOON-1PM	1515	0.0	481	0.0	1500	1515	0	481	1.27	6	63.6	33.5	30.8	32.0	32.0
1-2 PM	1541	0.0	489	0.0	1500	1541	0	489	2.17	32	63.5	25.0	30.8	31.9	31.9
2-3 PM	1667	0.0	530	0.0	1500	1562	105	635	4.98	108	63.3	14.7	30.8	31.2	29.8
3-4 PM	1726	0.0	548	0.0	1500	1505	221	769	5.66	125	63.2	13.7	30.8	30.9	27.8
4-5 PM	1616	0.0	513	0.0	1499	1480	137	650	5.19	112	63.4	14.3	30.8	31.5	29.6
5-6 PM	1433	0.0	454	0.0	1500	1428	5	459	3.87	79	63.7	17.3	31.2	32.4	32.4
6-7 PM	1181	0.0	375	0.0	1500	1181	0	375	0.66	1	64.2	43.5	39.1	33.7	33.7
7-8 PM	965	0.0	306	0.0	1500	965	0	306	0.52	0	64.6	47.1	41.8	34.8	34.8
8-9 PM	736	0.0	233	0.0	1500	736	0	233	0.49	0	65.0	47.9	42.6	36.0	36.0
9-10 PM	525	0.0	166	0.0	1500	525	0	166	0.47	0	65.4	48.6	43.4	37.1	37.1
10-11 PM	336	0.0	107	0.0	1500	336	0	107	0.46	0	65.8	49.3	44.2	38.0	38.0
11PM-MID	220	0.0	70	0.0	1500	220	0	70	0.44	0	66.0	49.7	44.6	38.6	38.6

----- SITE BREAKDOWN DELAYS -----	
BREAKDOWN DURATION (MINS)	0
RANGE OF QUEUE DELAY - MIN	0.0
(VEH-H) MAX	0.0
RANGE OF DIVN DELAY - MIN	0.0
(VEH-H) MAX	0.0
AV BREAKDOWNS PER DAY	0.00
AV QUEUE DELAY/DAY (VEH-H)	0.0
AV DIVN DELAY/DAY (VEH-H)	0.0
AV TOTAL DELAY/DAY (VEH-H)	0.0

----- SITE ACCIDENT DELAYS -----	
ACCIDENT DURATION (MINS)	0
RANGE OF QUEUE DELAY - MIN	0.0
(VEH-H) MAX	0.0
RANGE OF DIVN DELAY - MIN	0.0
(VEH-H) MAX	0.0
AV ACCIDENTS PER DAY	0.00
AV QUEUE DELAY/DAY (VEH-H)	0.0
AV DIVN DELAY/DAY (VEH-H)	0.0
AV TOTAL DELAY/DAY (VEH-H)	0.0

AVERAGE ACCIDENT NUMBERS (PIA/DAY)	
MAIN ROUTE WITHOUT WORKS	0.0046
MAIN ROUTE WITH WORKS	0.0032
DIVERSION	0.0245

PIA: Personal Injury Accidents

IMPACTS ON ROAD USERS	
ROAD USER COSTS PER DAY (DOLLARS)	\$12,403
CONGESTED HOURS PER DAY*	0

*Delays Exceeding 15 Minutes

IH 90: USH 53 TO STH 16 (LA CROSSE COUNTY)
CONTINUOUS (24 HOUR) CLOSURE
DIVERSION ROUTE: USH 53 - STH 157 - STH 35

MAY
 Analyzed for 2009
 Construction Season

GRAPHICAL REPRESENTATION OF TRAFFIC MODEL INPUT AND OUTPUT
SUNDAY EASTBOUND DIRECTION

