

<b>IH 90: USH 53 TO STH 16 (LA CROSSE COUNTY)</b> <b>CONTINUOUS (24 HOUR) CLOSURE</b> <b>DIVERSION ROUTE: USH 53 - STH 157 - STH 35</b>	<b>MAY</b>
	Analyzed for 2009 Construction Season

**SUMMARY OF TRAFFIC MODEL OUTPUT**

**SATURDAY WESTBOUND DIRECTION**

TIME OF DAY	FLOWS AND CAPACITY IN VEH/HR							AVERAGE SPEEDS IN MPH							
	MAIN ROUTE		ALTERNATE ROUTE		SITE CAPA CITY	FLOW MAIN ROUTE	FLOW DIVER -TING	TOTAL DIVN FLOW	AV.DEL PER VEH (MINS)	AVERAGE QUEUE (VEH)	MAIN ROUTE		ALTERNATE ROUTE		
	DEMAND FLOW	PCT HEAVY	NORMAL FLOW	PCT HEAVY							WITHOUT WORK ZN	WITH WORK ZN	SITE	WITHOUT WORK ZN	WITH WORK ZN
MID-1 AM	301	0.0	95	0.0	1500	301	0	95	0.45	0	65.8	49.4	44.3	38.2	38.2
1-2 AM	180	0.0	57	0.0	1500	180	0	57	0.44	0	66.1	49.9	44.8	38.8	38.8
2-3 AM	170	0.0	54	0.0	1500	170	0	54	0.44	0	66.1	49.9	44.8	38.9	38.9
3-4 AM	175	0.0	56	0.0	1500	175	0	56	0.44	0	66.1	49.9	44.8	38.8	38.8
4-5 AM	175	0.0	56	0.0	1500	175	0	56	0.44	0	66.1	49.9	44.8	38.8	38.8
5-6 AM	203	0.0	64	0.0	1500	203	0	64	0.44	0	66.0	49.8	44.6	38.7	38.7
6-7 AM	357	0.0	114	0.0	1500	357	0	114	0.46	0	65.7	49.2	44.0	37.9	37.9
7-8 AM	608	0.0	193	0.0	1500	608	0	193	0.48	0	65.3	48.3	43.1	36.6	36.6
8-9 AM	875	0.0	278	0.0	1500	875	0	278	0.51	0	64.8	47.4	42.1	35.3	35.3
9-10 AM	1363	0.0	432	0.0	1499	1363	0	432	0.84	0	63.8	39.9	34.0	32.8	32.8
10-11 AM	1581	0.0	502	0.0	1499	1581	0	502	2.10	33	63.5	25.5	30.8	31.6	31.6
11A-NOON	1591	0.0	505	0.0	1499	1522	69	575	4.88	104	63.4	14.9	30.8	31.6	30.7
NOON-1PM	1436	0.0	456	0.0	1499	1432	3	459	3.77	76	63.7	17.6	31.0	32.4	32.4
1-2 PM	1292	0.0	410	0.0	1500	1292	0	410	0.85	3	64.0	39.8	35.6	33.1	33.1
2-3 PM	1264	0.0	402	0.0	1500	1264	0	402	0.72	0	64.0	42.3	36.5	33.3	33.3
3-4 PM	1135	0.0	360	0.0	1500	1135	0	360	0.55	0	64.3	46.0	40.6	33.9	33.9
4-5 PM	1085	0.0	344	0.0	1500	1085	0	344	0.53	0	64.3	46.7	41.4	34.2	34.2
5-6 PM	898	0.0	285	0.0	1500	898	0	285	0.51	0	64.7	47.3	42.0	35.1	35.1
6-7 PM	828	0.0	263	0.0	1500	828	0	263	0.50	0	64.8	47.6	42.3	35.5	35.5
7-8 PM	683	0.0	217	0.0	1500	683	0	217	0.49	0	65.1	48.1	42.8	36.3	36.3
8-9 PM	585	0.0	186	0.0	1500	585	0	186	0.48	0	65.3	48.4	43.2	36.8	36.8
9-10 PM	495	0.0	157	0.0	1500	495	0	157	0.47	0	65.5	48.7	43.5	37.2	37.2
10-11 PM	369	0.0	118	0.0	1500	369	0	118	0.46	0	65.7	49.2	44.0	37.8	37.8
11PM-MID	293	0.0	93	0.0	1500	293	0	93	0.45	0	65.8	49.5	44.3	38.3	38.3

*----- SITE BREAKDOWN DELAYS -----*	
BREAKDOWN DURATION (MINS)	0
RANGE OF QUEUE DELAY - MIN	0.0
(VEH-H) MAX	0.0
RANGE OF DIVN DELAY - MIN	0.0
(VEH-H) MAX	0.0
AV BREAKDOWNS PER DAY	0.00
AV QUEUE DELAY/DAY (VEH-H)	0.0
AV DIVN DELAY/DAY (VEH-H)	0.0
AV TOTAL DELAY/DAY (VEH-H)	0.0

*----- SITE ACCIDENT DELAYS -----*	
ACCIDENT DURATION (MINS)	0
RANGE OF QUEUE DELAY - MIN	0.0
(VEH-H) MAX	0.0
RANGE OF DIVN DELAY - MIN	0.0
(VEH-H) MAX	0.0
AV ACCIDENTS PER DAY	0.00
AV QUEUE DELAY/DAY (VEH-H)	0.0
AV DIVN DELAY/DAY (VEH-H)	0.0
AV TOTAL DELAY/DAY (VEH-H)	0.0

AVERAGE ACCIDENT NUMBERS (PIA/DAY)	
MAIN ROUTE WITHOUT WORKS	0.0043
MAIN ROUTE WITH WORKS	0.0031
DIVERSION	0.0215

PIA: Personal Injury Accidents

IMPACTS ON ROAD USERS	
ROAD USER COSTS PER DAY ( DOLLARS)	\$6,613
CONGESTED HOURS PER DAY*	0

\*Delays Exceeding 15 Minutes

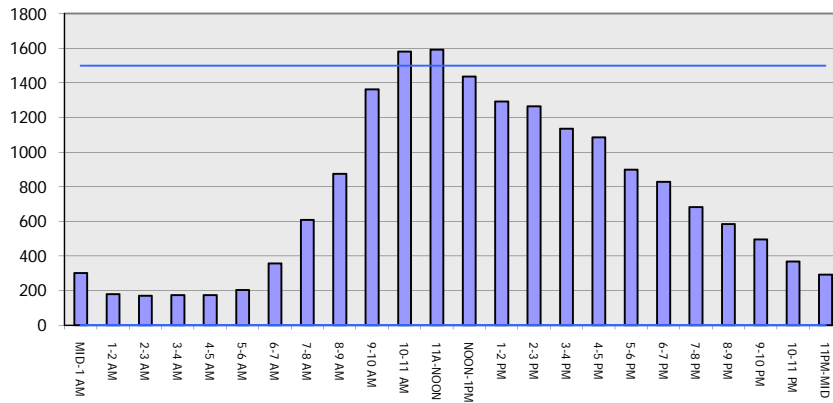
**IH 90: USH 53 TO STH 16 (LA CROSSE COUNTY)**  
**CONTINUOUS (24 HOUR) CLOSURE**  
**DIVERSION ROUTE: USH 53 - STH 157 - STH 35**

**MAY**  
 Analyzed for 2009  
 Construction Season

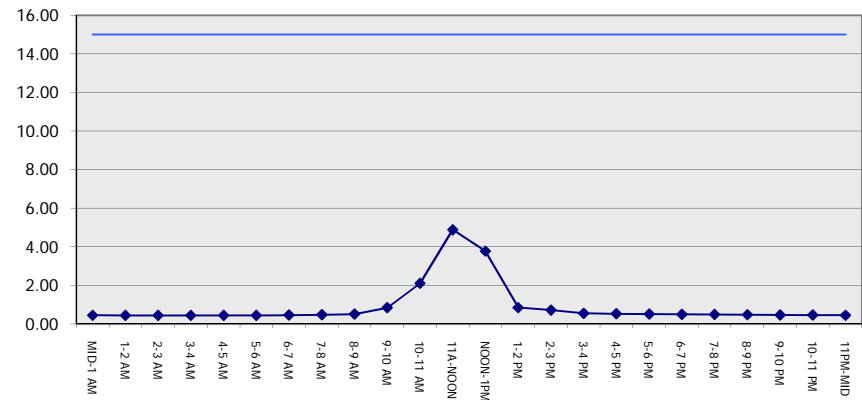
**GRAPHICAL REPRESENTATION OF TRAFFIC MODEL INPUT AND OUTPUT**

**SATURDAY WESTBOUND DIRECTION**

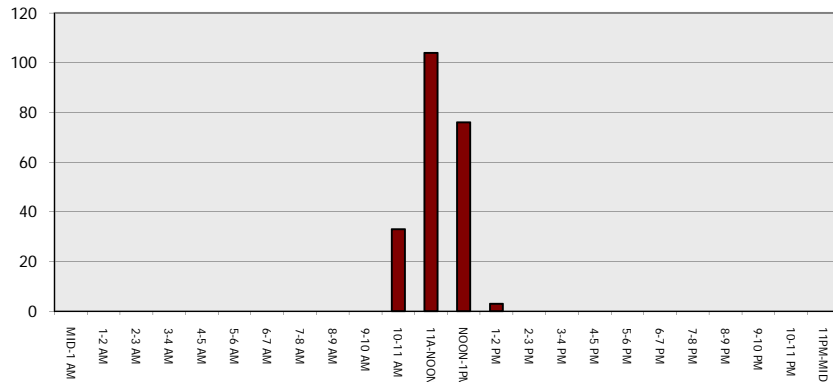
**Main Route - Traffic Demand (Vehicles Per Hour)**



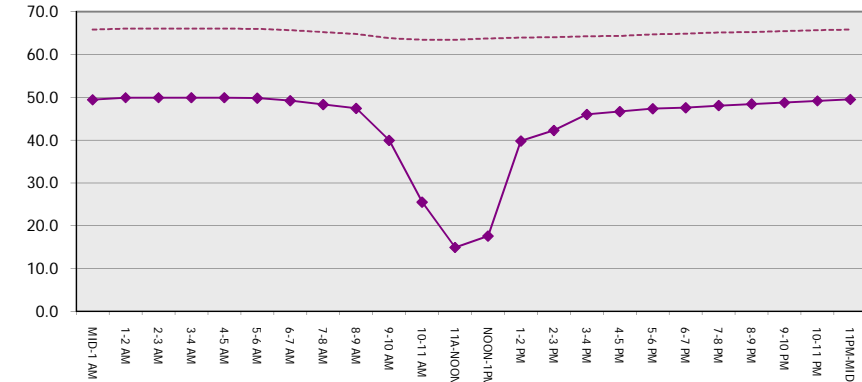
**Main Route Average Delay Per Vehicle (Minutes)**



**Main Route - Average Queue Length (Vehicles)**



**Main Route - Average Speed (MPH)**



<b>IH 90: USH 53 TO STH 16 (LA CROSSE COUNTY)</b> <b>CONTINUOUS (24 HOUR) CLOSURE</b> <b>DIVERSION ROUTE: USH 53 - STH 157 - STH 35</b>	<b>MAY</b>
	Analyzed for 2009 Construction Season

**SUMMARY OF TRAFFIC MODEL OUTPUT**

**SATURDAY EASTBOUND DIRECTION**

TIME OF DAY	FLOWS AND CAPACITY IN VEH/HR								AVERAGE SPEEDS IN MPH						
	MAIN		DIVERSION		SITE CAPA CITY	FLOW MAIN ROUTE	FLOW DIVER -TING	TOTAL DIVN FLOW	AV.DEL PER VEH (MINS)	AVERAGE QUEUE (VEH)	MAIN ROUTE		SITE	ALTERNATE ROUTE	
	DEMAND FLOW	PCT HEAVY	NORMAL FLOW	PCT HEAVY							WITHOUT WORK ZN	WITH WORK ZN		WITHOUT WORK ZN	WITH WORK ZN
MID-1 AM	236	0.0	75	0.0	1500	236	0	75	0.45	0	66.0	49.7	44.5	38.5	38.5
1-2 AM	179	0.0	57	0.0	1500	179	0	57	0.44	0	66.1	49.9	44.8	38.8	38.8
2-3 AM	147	0.0	47	0.0	1500	147	0	47	0.44	0	66.1	50.1	44.9	39.0	39.0
3-4 AM	163	0.0	52	0.0	1500	163	0	52	0.44	0	66.1	50.0	44.8	38.9	38.9
4-5 AM	179	0.0	57	0.0	1500	179	0	57	0.44	0	66.1	49.9	44.8	38.8	38.8
5-6 AM	268	0.0	85	0.0	1500	268	0	85	0.45	0	65.9	49.6	44.4	38.4	38.4
6-7 AM	430	0.0	137	0.0	1500	430	0	137	0.46	0	65.6	49.0	43.8	37.5	37.5
7-8 AM	651	0.0	207	0.0	1500	651	0	207	0.49	0	65.1	48.2	42.9	36.4	36.4
8-9 AM	979	0.0	310	0.0	1500	979	0	310	0.52	0	64.6	47.1	41.7	34.7	34.7
9-10 AM	1219	0.0	387	0.0	1500	1219	0	387	0.66	0	64.1	43.6	37.9	33.5	33.5
10-11 AM	1370	0.0	435	0.0	1500	1370	0	435	0.86	0	63.8	39.7	33.7	32.7	32.7
11A-NOON	1441	0.0	458	0.0	1500	1441	0	458	0.95	0	63.7	38.1	32.0	32.4	32.4
NOON-1PM	1365	0.0	433	0.0	1500	1365	0	433	0.85	0	63.8	39.8	33.8	32.7	32.7
1-2 PM	1372	0.0	435	0.0	1500	1372	0	435	0.86	0	63.8	39.6	33.7	32.7	32.7
2-3 PM	1279	0.0	406	0.0	1500	1279	0	406	0.74	0	64.0	41.9	36.1	33.2	33.2
3-4 PM	1271	0.0	404	0.0	1500	1271	0	404	0.73	0	64.0	42.1	36.3	33.2	33.2
4-5 PM	1237	0.0	393	0.0	1500	1237	0	393	0.68	0	64.1	43.0	37.3	33.4	33.4
5-6 PM	1066	0.0	339	0.0	1500	1066	0	339	0.53	0	64.4	46.8	41.4	34.3	34.3
6-7 PM	1027	0.0	327	0.0	1500	1027	0	327	0.52	0	64.5	46.9	41.6	34.5	34.5
7-8 PM	803	0.0	255	0.0	1500	803	0	255	0.50	0	64.9	47.7	42.4	35.6	35.6
8-9 PM	729	0.0	231	0.0	1500	729	0	231	0.49	0	65.0	47.9	42.7	36.0	36.0
9-10 PM	520	0.0	165	0.0	1500	520	0	165	0.47	0	65.4	48.7	43.4	37.1	37.1
10-11 PM	390	0.0	124	0.0	1500	390	0	124	0.46	0	65.6	49.1	43.9	37.8	37.8
11PM-MID	234	0.0	74	0.0	1500	234	0	74	0.45	0	66.0	49.7	44.5	38.6	38.6

*----- SITE BREAKDOWN DELAYS -----*	
BREAKDOWN DURATION (MINS)	0
RANGE OF QUEUE DELAY - MIN	0.0
(VEH-H) MAX	0.0
RANGE OF DIVN DELAY - MIN	0.0
(VEH-H) MAX	0.0
AV BREAKDOWNS PER DAY	0.00
AV QUEUE DELAY/DAY (VEH-H)	0.0
AV DIVN DELAY/DAY (VEH-H)	0.0
AV TOTAL DELAY/DAY (VEH-H)	0.0

*----- SITE ACCIDENT DELAYS -----*	
ACCIDENT DURATION (MINS)	0
RANGE OF QUEUE DELAY - MIN	0.0
(VEH-H) MAX	0.0
RANGE OF DIVN DELAY - MIN	0.0
(VEH-H) MAX	0.0
AV ACCIDENTS PER DAY	0.00
AV QUEUE DELAY/DAY (VEH-H)	0.0
AV DIVN DELAY/DAY (VEH-H)	0.0
AV TOTAL DELAY/DAY (VEH-H)	0.0

AVERAGE ACCIDENT NUMBERS (PIA/DAY)	
MAIN ROUTE WITHOUT WORKS	0.0044
MAIN ROUTE WITH WORKS	0.0032
DIVERSION	0.0219

PIA: Personal Injury Accidents

IMPACTS ON ROAD USERS	
ROAD USER COSTS PER DAY ( DOLLARS)	\$3,358
CONGESTED HOURS PER DAY*	0

\*Delays Exceeding 15 Minutes

**IH 90: USH 53 TO STH 16 (LA CROSSE COUNTY)**  
**CONTINUOUS (24 HOUR) CLOSURE**  
**DIVERSION ROUTE: USH 53 - STH 157 - STH 35**

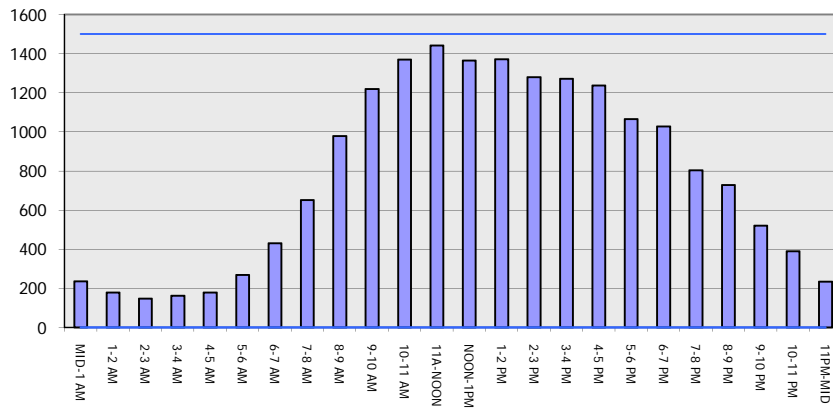
**MAY**

Analyzed for 2009  
 Construction Season

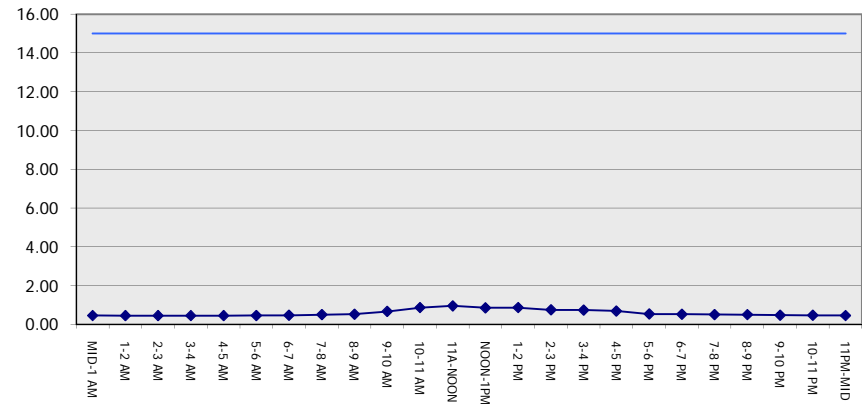
**GRAPHICAL REPRESENTATION OF TRAFFIC MODEL INPUT AND OUTPUT**

**SATURDAY EASTBOUND DIRECTION**

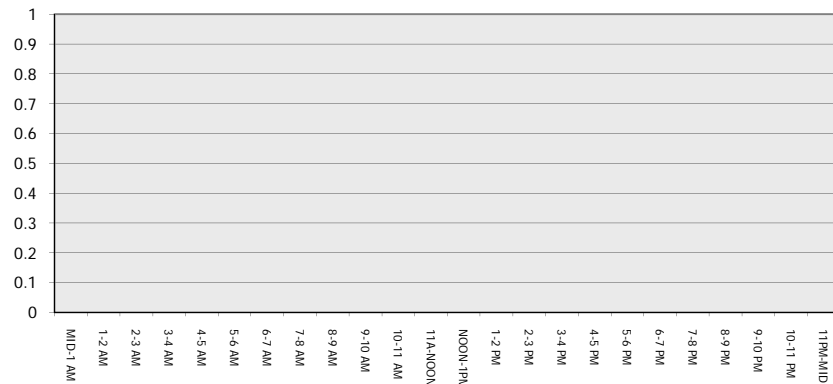
**Main Route - Traffic Demand (Vehicles Per Hour)**



**Main Route Average Delay Per Vehicle (Minutes)**



**Main Route - Average Queue Length (Vehicles)**



**Main Route - Average Speed (MPH)**

