

IH 90: USH 53 TO STH 16 (LA CROSSE COUNTY) CONTINUOUS (24 HOUR) CLOSURE DIVERSION ROUTE: USH 53 - STH 157 - STH 35	MAY
	Analyzed for 2009 Construction Season

SUMMARY OF TRAFFIC MODEL OUTPUT

MON-THUR WESTBOUND DIRECTION

TIME OF DAY	FLOWS AND CAPACITY IN VEH/HR							AVERAGE SPEEDS IN MPH							
	MAIN ROUTE		ALTERNATE ROUTE		SITE CAPA CITY	FLOW MAIN ROUTE	FLOW DIVER -TING	TOTAL DIVN FLOW	AV.DEL PER VEH (MINS)	AVERAGE QUEUE (VEH)	MAIN ROUTE		ALTERNATE ROUTE		
	DEMAND FLOW	PCT HEAVY	NORMAL FLOW	PCT HEAVY							WITHOUT WORK ZN	WITH WORK ZN	SITE	WITHOUT WORK ZN	WITH WORK ZN
MID-1 AM	223	0.0	71	0.0	1500	223	0	71	0.44	0	66.0	49.7	44.6	38.6	38.6
1-2 AM	153	0.0	49	0.0	1500	153	0	49	0.44	0	66.1	50.0	44.9	38.9	38.9
2-3 AM	145	0.0	47	0.0	1500	145	0	47	0.44	0	66.1	50.1	44.9	39.0	39.0
3-4 AM	167	0.0	53	0.0	1500	167	0	53	0.44	0	66.1	49.9	44.8	38.9	38.9
4-5 AM	243	0.0	77	0.0	1500	243	0	77	0.45	0	66.0	49.7	44.5	38.5	38.5
5-6 AM	413	0.0	131	0.0	1500	413	0	131	0.46	0	65.6	49.1	43.8	37.6	37.6
6-7 AM	609	0.0	194	0.0	1500	609	0	194	0.48	0	65.3	48.3	43.1	36.6	36.6
7-8 AM	828	0.0	263	0.0	1500	828	0	263	0.50	0	64.8	47.6	42.3	35.5	35.5
8-9 AM	953	0.0	302	0.0	1500	953	0	302	0.51	0	64.6	47.1	41.9	34.8	34.8
9-10 AM	1070	0.0	340	0.0	1500	1070	0	340	0.53	0	64.4	46.8	41.4	34.3	34.3
10-11 AM	1120	0.0	356	0.0	1500	1120	0	356	0.53	0	64.3	46.5	41.2	34.0	34.0
11A-NOON	1101	0.0	350	0.0	1500	1101	0	350	0.53	0	64.3	46.6	41.3	34.1	34.1
NOON-1PM	1115	0.0	354	0.0	1500	1115	0	354	0.53	0	64.3	46.6	41.3	34.0	34.0
1-2 PM	1208	0.0	383	0.0	1500	1208	0	383	0.65	0	64.1	43.8	38.2	33.5	33.5
2-3 PM	1342	0.0	426	0.0	1500	1342	0	426	0.82	0	63.9	40.4	34.4	32.9	32.9
3-4 PM	1456	0.0	463	0.0	1499	1456	0	463	0.97	0	63.7	37.8	31.7	32.3	32.3
4-5 PM	1513	0.0	481	0.0	1499	1513	0	481	1.50	12	63.6	30.9	30.8	32.0	32.0
5-6 PM	1251	0.0	398	0.0	1500	1251	0	398	0.71	0	64.0	42.4	36.9	33.3	33.3
6-7 PM	1006	0.0	320	0.0	1500	1006	0	320	0.52	0	64.5	46.9	41.7	34.6	34.6
7-8 PM	817	0.0	260	0.0	1500	817	0	260	0.50	0	64.8	47.6	42.4	35.5	35.5
8-9 PM	670	0.0	213	0.0	1500	670	0	213	0.49	0	65.1	48.1	42.8	36.3	36.3
9-10 PM	556	0.0	177	0.0	1500	556	0	177	0.48	0	65.3	48.5	43.3	36.9	36.9
10-11 PM	410	0.0	130	0.0	1500	410	0	130	0.46	0	65.6	49.1	43.8	37.6	37.6
11PM-MID	299	0.0	95	0.0	1500	299	0	95	0.45	0	65.8	49.4	44.3	38.2	38.2

----- SITE BREAKDOWN DELAYS -----	
BREAKDOWN DURATION (MINS)	0
RANGE OF QUEUE DELAY - MIN	0.0
(VEH-H) MAX	0.0
RANGE OF DIVN DELAY - MIN	0.0
(VEH-H) MAX	0.0
AV BREAKDOWNS PER DAY	0.00
AV QUEUE DELAY/DAY (VEH-H)	0.0
AV DIVN DELAY/DAY (VEH-H)	0.0
AV TOTAL DELAY/DAY (VEH-H)	0.0

----- SITE ACCIDENT DELAYS -----	
ACCIDENT DURATION (MINS)	0
RANGE OF QUEUE DELAY - MIN	0.0
(VEH-H) MAX	0.0
RANGE OF DIVN DELAY - MIN	0.0
(VEH-H) MAX	0.0
AV ACCIDENTS PER DAY	0.00
AV QUEUE DELAY/DAY (VEH-H)	0.0
AV DIVN DELAY/DAY (VEH-H)	0.0
AV TOTAL DELAY/DAY (VEH-H)	0.0

AVERAGE ACCIDENT NUMBERS (PIA/DAY)	
MAIN ROUTE WITHOUT WORKS	0.0044
MAIN ROUTE WITH WORKS	0.0032
DIVERSION	0.0221

PIA: Personal Injury Accidents

IMPACTS ON ROAD USERS	
ROAD USER COSTS PER DAY (DOLLARS)	\$2,552
CONGESTED HOURS PER DAY*	0

*Delays Exceeding 15 Minutes

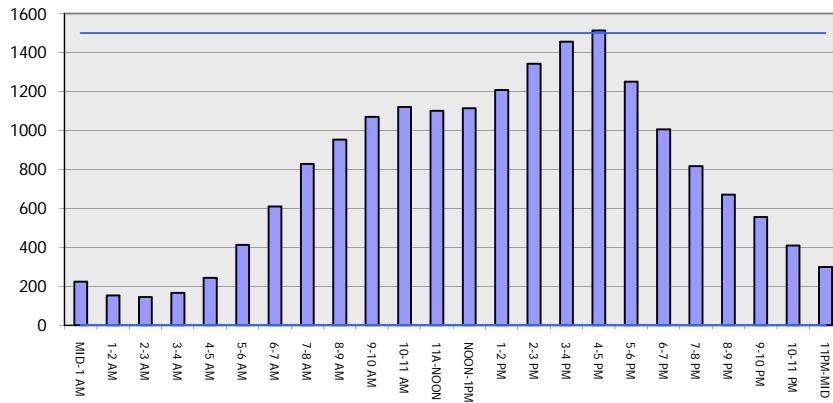
IH 90: USH 53 TO STH 16 (LA CROSSE COUNTY)
CONTINUOUS (24 HOUR) CLOSURE
DIVERSION ROUTE: USH 53 - STH 157 - STH 35

MAY
 Analyzed for 2009
 Construction Season

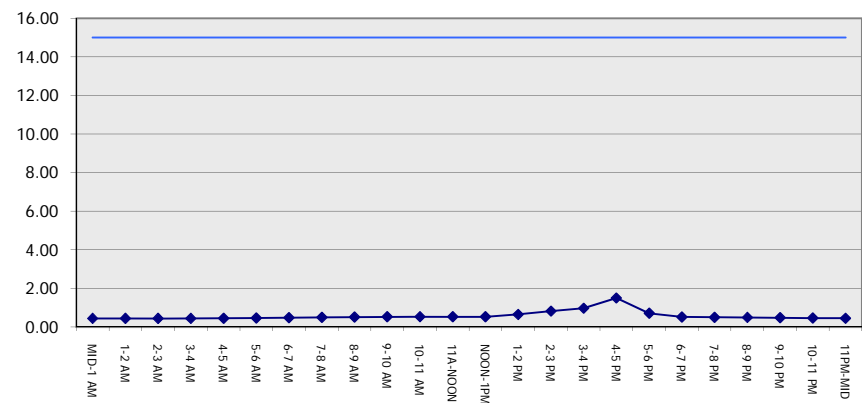
GRAPHICAL REPRESENTATION OF TRAFFIC MODEL INPUT AND OUTPUT

MON-THUR WESTBOUND DIRECTION

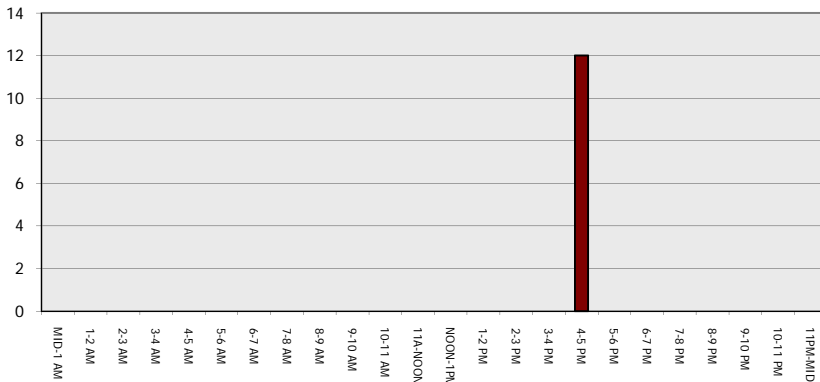
Main Route - Traffic Demand (Vehicles Per Hour)



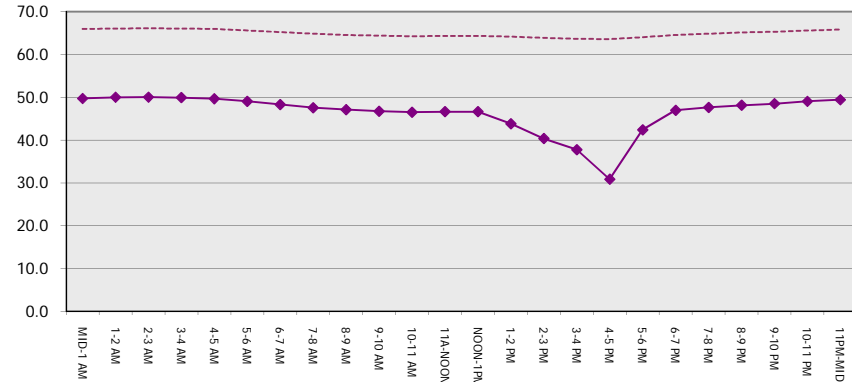
Main Route Average Delay Per Vehicle (Minutes)



Main Route - Average Queue Length (Vehicles)



Main Route - Average Speed (MPH)



IH 90: USH 53 TO STH 16 (LA CROSSE COUNTY) CONTINUOUS (24 HOUR) CLOSURE DIVERSION ROUTE: USH 53 - STH 157 - STH 35	MAY
	Analyzed for 2009 Construction Season

SUMMARY OF TRAFFIC MODEL OUTPUT

MON-THUR EASTBOUND DIRECTION

TIME OF DAY	FLOWS AND CAPACITY IN VEH/HR								AVERAGE SPEEDS IN MPH						
	MAIN		DIVERSION		SITE CAPA CITY	FLOW MAIN ROUTE	FLOW DIVER -TING	TOTAL DIVN FLOW	AV.DEL PER VEH (MINS)	AVERAGE QUEUE (VEH)	MAIN ROUTE		SITE	ALTERNATE ROUTE	
	DEMAND FLOW	PCT HEAVY	NORMAL FLOW	PCT HEAVY							WITHOUT WORK ZN	WITH WORK ZN		WITHOUT WORK ZN	WITH WORK ZN
MID-1 AM	190	0.0	60	0.0	1500	190	0	60	0.44	0	66.0	49.9	44.7	38.8	38.8
1-2 AM	156	0.0	50	0.0	1500	156	0	50	0.44	0	66.1	50.0	44.8	38.9	38.9
2-3 AM	163	0.0	52	0.0	1500	163	0	52	0.44	0	66.1	50.0	44.8	38.9	38.9
3-4 AM	222	0.0	71	0.0	1500	222	0	71	0.44	0	66.0	49.7	44.6	38.6	38.6
4-5 AM	289	0.0	92	0.0	1500	289	0	92	0.45	0	65.8	49.5	44.3	38.3	38.3
5-6 AM	502	0.0	159	0.0	1500	502	0	159	0.47	0	65.5	48.7	43.5	37.2	37.2
6-7 AM	773	0.0	246	0.0	1500	773	0	246	0.50	0	65.0	47.8	42.5	35.8	35.8
7-8 AM	991	0.0	314	0.0	1500	991	0	314	0.52	0	64.5	47.0	41.7	34.7	34.7
8-9 AM	924	0.0	293	0.0	1500	924	0	293	0.51	0	64.6	47.3	41.9	35.0	35.0
9-10 AM	962	0.0	305	0.0	1500	962	0	305	0.52	0	64.6	47.1	41.8	34.8	34.8
10-11 AM	1032	0.0	328	0.0	1500	1032	0	328	0.52	0	64.5	46.9	41.5	34.5	34.5
11A-NOON	1072	0.0	341	0.0	1500	1072	0	341	0.53	0	64.4	46.8	41.4	34.2	34.2
NOON-1PM	1107	0.0	352	0.0	1500	1107	0	352	0.53	0	64.3	46.6	41.3	34.0	34.0
1-2 PM	1213	0.0	384	0.0	1500	1213	0	384	0.65	0	64.1	43.7	38.1	33.5	33.5
2-3 PM	1283	0.0	407	0.0	1500	1283	0	407	0.74	0	64.0	41.9	36.0	33.2	33.2
3-4 PM	1317	0.0	418	0.0	1500	1317	0	418	0.79	0	63.9	41.0	35.0	33.0	33.0
4-5 PM	1324	0.0	421	0.0	1500	1324	0	421	0.80	0	63.9	40.8	34.8	33.0	33.0
5-6 PM	1182	0.0	375	0.0	1500	1182	0	375	0.61	0	64.2	44.6	39.1	33.7	33.7
6-7 PM	901	0.0	286	0.0	1500	901	0	286	0.51	0	64.7	47.3	42.0	35.1	35.1
7-8 PM	771	0.0	244	0.0	1500	771	0	244	0.50	0	65.0	47.8	42.5	35.8	35.8
8-9 PM	623	0.0	198	0.0	1500	623	0	198	0.48	0	65.2	48.3	43.0	36.6	36.6
9-10 PM	529	0.0	167	0.0	1500	529	0	167	0.47	0	65.4	48.6	43.4	37.0	37.0
10-11 PM	366	0.0	117	0.0	1500	366	0	117	0.46	0	65.7	49.2	44.0	37.9	37.9
11PM-MID	285	0.0	90	0.0	1500	285	0	90	0.45	0	65.8	49.5	44.3	38.3	38.3

----- SITE BREAKDOWN DELAYS -----	
BREAKDOWN DURATION (MINS)	0
RANGE OF QUEUE DELAY - MIN	0.0
(VEH-H) MAX	0.0
RANGE OF DIVN DELAY - MIN	0.0
(VEH-H) MAX	0.0
AV BREAKDOWNS PER DAY	0.00
AV QUEUE DELAY/DAY (VEH-H)	0.0
AV DIVN DELAY/DAY (VEH-H)	0.0
AV TOTAL DELAY/DAY (VEH-H)	0.0

----- SITE ACCIDENT DELAYS -----	
ACCIDENT DURATION (MINS)	0
RANGE OF QUEUE DELAY - MIN	0.0
(VEH-H) MAX	0.0
RANGE OF DIVN DELAY - MIN	0.0
(VEH-H) MAX	0.0
AV ACCIDENTS PER DAY	0.00
AV QUEUE DELAY/DAY (VEH-H)	0.0
AV DIVN DELAY/DAY (VEH-H)	0.0
AV TOTAL DELAY/DAY (VEH-H)	0.0

AVERAGE ACCIDENT NUMBERS (PIA/DAY)	
MAIN ROUTE WITHOUT WORKS	0.0043
MAIN ROUTE WITH WORKS	0.0031
DIVERSION	0.0215

PIA: Personal Injury Accidents

IMPACTS ON ROAD USERS	
ROAD USER COSTS PER DAY (DOLLARS)	\$2,155
CONGESTED HOURS PER DAY*	0

*Delays Exceeding 15 Minutes

**IH 90: USH 53 TO STH 16 (LA CROSSE COUNTY)
 CONTINUOUS (24 HOUR) CLOSURE
 DIVERSION ROUTE: USH 53 - STH 157 - STH 35**

MAY
 Analyzed for 2009
 Construction Season

GRAPHICAL REPRESENTATION OF TRAFFIC MODEL INPUT AND OUTPUT
MON-THUR EASTBOUND DIRECTION

