

**IH 90: USH 53 TO STH 16 (LA CROSSE COUNTY)
CONTINUOUS (24 HOUR) CLOSURE
DIVERSION ROUTE: USH 53 - STH 157 - STH 35**

MAY
Analyzed for 2009
Construction Season

SUMMARY OF TRAFFIC MODEL OUTPUT
FRIDAY WESTBOUND DIRECTION

TIME OF DAY	FLOWS AND CAPACITY IN VEH/HR							AVERAGE SPEEDS IN MPH							
	MAIN ROUTE		ALTERNATE ROUTE		SITE CAPA CITY	FLOW MAIN ROUTE	FLOW DIVER -TING	TOTAL DIVN FLOW	AV.DEL PER VEH (MINS)	AVERAGE QUEUE (VEH)	MAIN ROUTE		ALTERNATE ROUTE		
	DEMAND FLOW	PCT HEAVY	NORMAL FLOW	PCT HEAVY							WITHOUT WORK ZN	WITH WORK ZN	SITE	WITHOUT WORK ZN	WITH WORK ZN
MID-1 AM	281	0.0	89	0.0	1500	281	0	89	0.45	0	65.9	49.5	44.3	38.3	38.3
1-2 AM	203	0.0	64	0.0	1500	203	0	64	0.44	0	66.0	49.8	44.6	38.7	38.7
2-3 AM	206	0.0	65	0.0	1500	206	0	65	0.44	0	66.0	49.8	44.6	38.7	38.7
3-4 AM	205	0.0	65	0.0	1500	205	0	65	0.44	0	66.0	49.8	44.6	38.7	38.7
4-5 AM	283	0.0	90	0.0	1500	283	0	90	0.45	0	65.9	49.5	44.3	38.3	38.3
5-6 AM	428	0.0	136	0.0	1500	428	0	136	0.46	0	65.6	49.0	43.8	37.6	37.6
6-7 AM	618	0.0	196	0.0	1500	618	0	196	0.48	0	65.2	48.3	43.0	36.6	36.6
7-8 AM	906	0.0	288	0.0	1500	906	0	288	0.51	0	64.7	47.3	42.0	35.1	35.1
8-9 AM	1087	0.0	345	0.0	1500	1087	0	345	0.53	0	64.3	46.7	41.4	34.2	34.2
9-10 AM	1175	0.0	373	0.0	1500	1175	0	373	0.60	0	64.2	44.8	39.2	33.7	33.7
10-11 AM	1309	0.0	416	0.0	1499	1309	0	416	0.78	0	64.0	41.2	35.3	33.0	33.0
11A-NOON	1487	0.0	473	0.0	1499	1487	0	473	1.03	0	63.6	36.8	31.1	32.1	32.1
NOON-1PM	1455	0.0	462	0.0	1500	1455	0	462	0.97	0	63.7	37.8	31.7	32.3	32.3
1-2 PM	1562	0.0	496	0.0	1499	1562	0	496	1.65	19	63.5	29.2	30.8	31.7	31.7
2-3 PM	1806	0.0	573	0.0	1500	1587	219	792	5.69	128	63.0	13.7	30.8	30.5	27.4
3-4 PM	1992	0.0	632	0.0	1500	1535	457	1089	7.35	171	62.7	11.9	30.8	29.6	23.1
4-5 PM	1998	0.0	634	0.0	1499	1491	507	1141	7.70	180	62.7	11.6	30.8	29.5	22.4
5-6 PM	1848	0.0	586	0.0	1499	1462	385	972	6.65	152	63.0	12.5	30.8	30.3	24.8
6-7 PM	1639	0.0	520	0.0	1500	1467	172	692	5.35	117	63.3	14.1	30.8	31.4	28.9
7-8 PM	1403	0.0	445	0.0	1499	1399	4	450	3.25	67	63.8	19.5	31.7	32.5	32.5
8-9 PM	1142	0.0	363	0.0	1500	1142	0	363	0.59	0	64.3	45.2	39.7	33.9	33.9
9-10 PM	811	0.0	258	0.0	1500	811	0	258	0.50	0	64.9	47.6	42.4	35.6	35.6
10-11 PM	588	0.0	187	0.0	1500	588	0	187	0.48	0	65.3	48.4	43.2	36.7	36.7
11PM-MID	398	0.0	127	0.0	1500	398	0	127	0.46	0	65.6	49.1	43.9	37.7	37.7

----- SITE BREAKDOWN DELAYS -----

BREAKDOWN DURATION (MINS)	0
RANGE OF QUEUE DELAY - MIN (VEH-H) MAX	0.0
RANGE OF DIVN DELAY - MIN (VEH-H) MAX	0.0
AV BREAKDOWNS PER DAY	0.00
AV QUEUE DELAY/DAY (VEH-H)	0.0
AV DIVN DELAY/DAY (VEH-H)	0.0
AV TOTAL DELAY/DAY (VEH-H)	0.0

----- SITE ACCIDENT DELAYS -----

ACCIDENT DURATION (MINS)	0
RANGE OF QUEUE DELAY - MIN (VEH-H) MAX	0.0
RANGE OF DIVN DELAY - MIN (VEH-H) MAX	0.0
AV ACCIDENTS PER DAY	0.00
AV QUEUE DELAY/DAY (VEH-H)	0.0
AV DIVN DELAY/DAY (VEH-H)	0.0
AV TOTAL DELAY/DAY (VEH-H)	0.0

AVERAGE ACCIDENT NUMBERS (PIA/DAY)

MAIN ROUTE WITHOUT WORKS	0.0059
MAIN ROUTE WITH WORKS	0.0040
DIVERSION	0.0359

PIA: Personal Injury Accidents

IMPACTS ON ROAD USERS

ROAD USER COSTS PER DAY (DOLLARS)	\$19,414
CONGESTED HOURS PER DAY*	0

*Delays Exceeding 15 Minutes

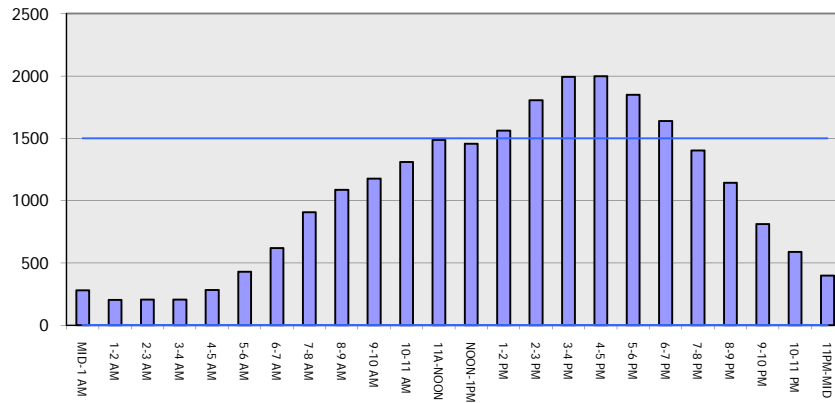
IH 90: USH 53 TO STH 16 (LA CROSSE COUNTY)
CONTINUOUS (24 HOUR) CLOSURE
DIVERSION ROUTE: USH 53 - STH 157 - STH 35

MAY
 Analyzed for 2009
 Construction Season

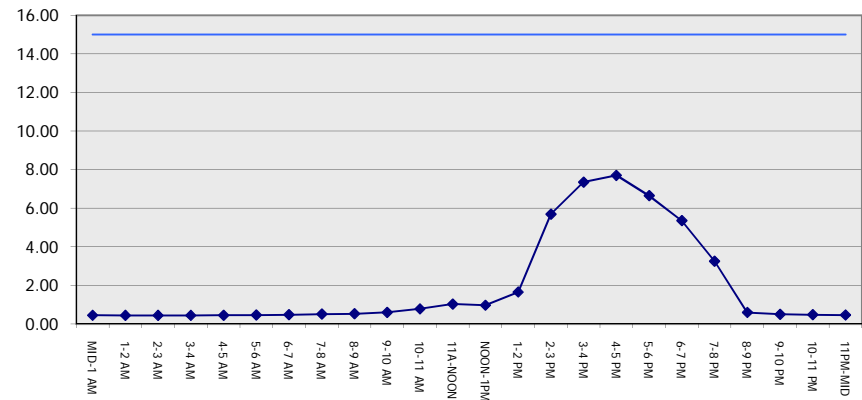
GRAPHICAL REPRESENTATION OF TRAFFIC MODEL INPUT AND OUTPUT

FRIDAY WESTBOUND DIRECTION

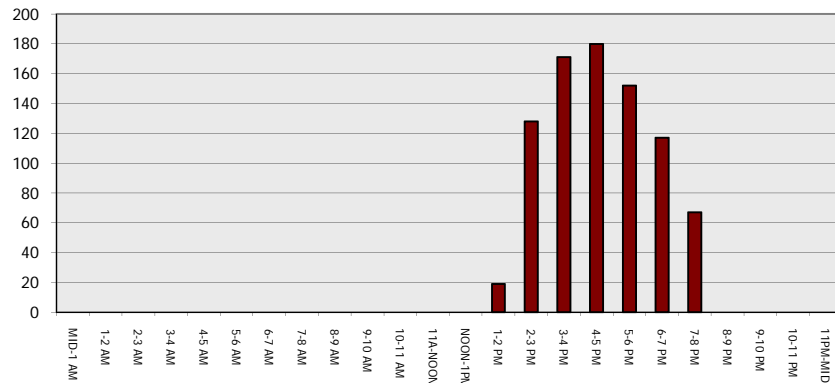
Main Route - Traffic Demand (Vehicles Per Hour)



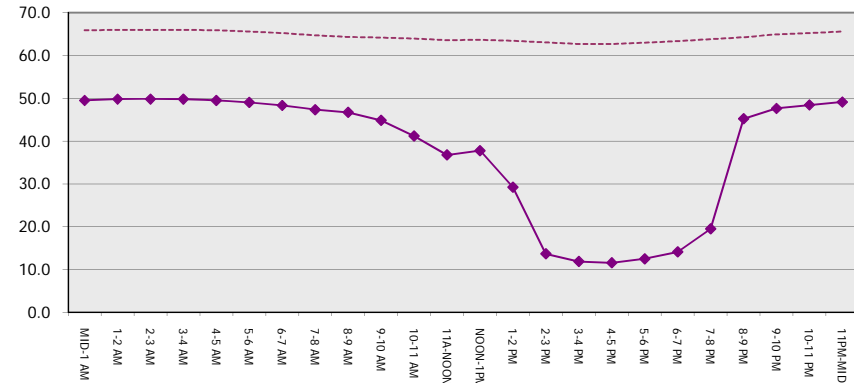
Main Route Average Delay Per Vehicle (Minutes)



Main Route - Average Queue Length (Vehicles)



Main Route - Average Speed (MPH)



IH 90: USH 53 TO STH 16 (LA CROSSE COUNTY) CONTINUOUS (24 HOUR) CLOSURE DIVERSION ROUTE: USH 53 - STH 157 - STH 35	MAY
	Analyzed for 2009 Construction Season

SUMMARY OF TRAFFIC MODEL OUTPUT

FRIDAY EASTBOUND DIRECTION

TIME OF DAY	FLOWS AND CAPACITY IN VEH/HR							AVERAGE SPEEDS IN MPH			AVERAGE SPEEDS IN MPH				
	MAIN		DIVERSION		SITE CAPA CITY	FLOW MAIN ROUTE	FLOW DIVER -TING	TOTAL DIVN FLOW	AV.DEL PER VEH (MINS)	AVERAGE QUEUE (VEH)	MAIN ROUTE		ALTERNATE ROUTE		
	DEMAND FLOW	PCT HEAVY	NORMAL FLOW	PCT HEAVY							WITHOUT WORK ZN	WITH WORK ZN	SITE	WITHOUT WORK ZN	WITH WORK ZN
MID-1 AM	217	0.0	69	0.0	1500	217	0	69	0.44	0	66.0	49.7	44.6	38.6	38.6
1-2 AM	191	0.0	61	0.0	1500	191	0	61	0.44	0	66.0	49.9	44.7	38.8	38.8
2-3 AM	204	0.0	65	0.0	1500	204	0	65	0.44	0	66.0	49.8	44.6	38.7	38.7
3-4 AM	239	0.0	76	0.0	1500	239	0	76	0.45	0	66.0	49.7	44.5	38.5	38.5
4-5 AM	302	0.0	96	0.0	1500	302	0	96	0.45	0	65.8	49.4	44.3	38.2	38.2
5-6 AM	461	0.0	146	0.0	1500	461	0	146	0.47	0	65.5	48.9	43.7	37.4	37.4
6-7 AM	780	0.0	248	0.0	1500	780	0	248	0.50	0	65.0	47.8	42.5	35.8	35.8
7-8 AM	964	0.0	306	0.0	1500	964	0	306	0.52	0	64.6	47.1	41.8	34.8	34.8
8-9 AM	982	0.0	311	0.0	1500	982	0	311	0.52	0	64.6	47.1	41.7	34.7	34.7
9-10 AM	1190	0.0	378	0.0	1500	1190	0	378	0.62	0	64.1	44.4	38.8	33.7	33.7
10-11 AM	1297	0.0	412	0.0	1500	1297	0	412	0.76	0	64.0	41.5	35.6	33.1	33.1
11A-NOON	1408	0.0	447	0.0	1499	1408	0	447	0.91	0	63.8	38.8	32.8	32.5	32.5
NOON-1PM	1498	0.0	476	0.0	1499	1498	0	476	1.17	5	63.6	34.8	31.2	32.0	32.0
1-2 PM	1757	0.0	558	0.0	1500	1622	136	694	4.63	103	63.1	15.5	30.8	30.7	28.8
2-3 PM	1931	0.0	613	0.0	1499	1528	403	1016	6.90	159	62.8	12.2	30.8	29.9	24.2
3-4 PM	1974	0.0	627	0.0	1499	1504	469	1096	7.40	172	62.7	11.8	30.8	29.6	23.0
4-5 PM	1954	0.0	621	0.0	1499	1492	462	1083	7.31	170	62.7	11.9	30.8	29.7	23.2
5-6 PM	1884	0.0	599	0.0	1500	1480	405	1003	6.83	157	62.8	12.4	30.8	30.1	24.3
6-7 PM	1664	0.0	529	0.0	1499	1458	206	735	5.52	122	63.3	13.8	30.8	31.2	28.3
7-8 PM	1269	0.0	403	0.0	1499	1267	2	405	1.53	34	64.0	30.7	35.4	33.2	33.2
8-9 PM	930	0.0	295	0.0	1500	930	0	295	0.51	0	64.6	47.3	41.9	35.0	35.0
9-10 PM	709	0.0	225	0.0	1500	709	0	225	0.49	0	65.1	48.0	42.7	36.1	36.1
10-11 PM	544	0.0	172	0.0	1500	544	0	172	0.48	0	65.4	48.6	43.3	36.9	36.9
11PM-MID	366	0.0	117	0.0	1500	366	0	117	0.46	0	65.7	49.2	44.0	37.9	37.9

----- SITE BREAKDOWN DELAYS -----	
BREAKDOWN DURATION (MINS)	0
RANGE OF QUEUE DELAY - MIN	0.0
(VEH-H) MAX	0.0
RANGE OF DIVN DELAY - MIN	0.0
(VEH-H) MAX	0.0
AV BREAKDOWNS PER DAY	0.00
AV QUEUE DELAY/DAY (VEH-H)	0.0
AV DIVN DELAY/DAY (VEH-H)	0.0
AV TOTAL DELAY/DAY (VEH-H)	0.0

----- SITE ACCIDENT DELAYS -----	
ACCIDENT DURATION (MINS)	0
RANGE OF QUEUE DELAY - MIN	0.0
(VEH-H) MAX	0.0
RANGE OF DIVN DELAY - MIN	0.0
(VEH-H) MAX	0.0
AV ACCIDENTS PER DAY	0.00
AV QUEUE DELAY/DAY (VEH-H)	0.0
AV DIVN DELAY/DAY (VEH-H)	0.0
AV TOTAL DELAY/DAY (VEH-H)	0.0

AVERAGE ACCIDENT NUMBERS (PIA/DAY)	
MAIN ROUTE WITHOUT WORKS	0.0059
MAIN ROUTE WITH WORKS	0.0039
DIVERSION	0.0370

PIA: Personal Injury Accidents

IMPACTS ON ROAD USERS	
ROAD USER COSTS PER DAY (DOLLARS)	\$20,861
CONGESTED HOURS PER DAY*	0

*Delays Exceeding 15 Minutes

**IH 90: USH 53 TO STH 16 (LA CROSSE COUNTY)
 CONTINUOUS (24 HOUR) CLOSURE
 DIVERSION ROUTE: USH 53 - STH 157 - STH 35**

MAY
 Analyzed for 2009
 Construction Season

GRAPHICAL REPRESENTATION OF TRAFFIC MODEL INPUT AND OUTPUT
FRIDAY EASTBOUND DIRECTION

