

<b>IH 90: USH 14/61 TO USH 53</b> <b>CONTINUOUS (24 HOUR) CLOSURE</b> <b>DIVERSION ROUTE: USH 53 TO USH 14/61</b>	<b>OCTOBER</b>
	Analyzed for 2009 Construction Season

**SUMMARY OF TRAFFIC MODEL OUTPUT**

SATURDAY WESTBOUND DIRECTION

TIME OF DAY	FLOWS AND CAPACITY IN VEH/HR							AVERAGE SPEEDS IN MPH							
	MAIN ROUTE		ALTERNATE ROUTE		SITE CAPA CITY	FLOW MAIN ROUTE	FLOW DIVER -TING	TOTAL DIVN FLOW	AV.DEL PER VEH (MINS)	AVERAGE QUEUE (VEH)	MAIN ROUTE		ALTERNATE ROUTE		
	DEMAND FLOW	PCT HEAVY	NORMAL FLOW	PCT HEAVY							WITHOUT WORK ZN	WITH WORK ZN	SITE	WITHOUT WORK ZN	WITH WORK ZN
MID-1 AM	204	0.0	176	7.0	1500	204	0	176	0.44	0	66.0	57.9	44.6	16.6	16.6
1-2 AM	177	0.0	151	7.0	1500	177	0	151	0.44	0	66.1	58.0	44.8	17.5	17.5
2-3 AM	165	0.0	142	7.0	1500	165	0	142	0.44	0	66.1	58.1	44.8	17.7	17.7
3-4 AM	150	0.0	129	7.0	1500	150	0	129	0.44	0	66.1	58.1	44.9	18.1	18.1
4-5 AM	150	0.0	129	7.0	1500	150	0	129	0.44	0	66.1	58.1	44.9	18.1	18.1
5-6 AM	185	0.0	159	7.0	1500	185	0	159	0.44	0	66.0	58.0	44.8	17.1	17.1
6-7 AM	301	0.0	259	7.0	1500	301	0	259	0.45	0	65.8	57.6	44.3	13.9	13.9
7-8 AM	461	0.0	396	7.0	1500	461	0	396	0.47	0	65.5	57.2	43.7	9.4	9.4
8-9 AM	700	0.0	602	7.0	1500	700	0	602	0.49	0	65.1	56.5	42.8	7.8	7.8
9-10 AM	947	0.0	813	7.0	1500	947	0	813+	0.51	0	64.6	55.8	41.9	6.1	6.1
10-11 AM	1261	0.0	1082	7.0	1500	1261	0	1082+	0.72	0	64.0	52.5	36.6	5.6	5.6
11A-NOON	1294	0.0	1111	7.0	1500	1294	0	1111+	0.76	0	64.0	52.0	35.6	5.6	5.6
NOON-1PM	1101	0.0	946	7.0	1500	1101	0	946+	0.53	0	64.3	55.3	41.4	5.6	5.6
1-2 PM	1014	0.0	869	7.0	1500	1014	0	869+	0.52	0	64.5	55.6	41.6	5.7	5.7
2-3 PM	1021	0.0	877	7.0	1500	1021	0	877+	0.52	0	64.5	55.6	41.6	5.6	5.6
3-4 PM	885	0.0	760	7.0	1500	885	0	760+	0.51	0	64.7	56.0	42.1	6.5	6.5
4-5 PM	976	0.0	838	7.0	1500	976	0	838+	0.52	0	64.6	55.7	41.7	5.9	5.9
5-6 PM	910	0.0	781	7.0	1500	910	0	781+	0.51	0	64.7	55.9	42.0	6.3	6.3
6-7 PM	792	0.0	680	7.0	1500	792	0	680	0.50	0	64.9	56.2	42.4	7.1	7.1
7-8 PM	656	0.0	564	7.0	1500	656	0	564	0.49	0	65.1	56.6	42.9	8.0	8.0
8-9 PM	570	0.0	490	7.0	1500	570	0	490	0.48	0	65.3	56.9	43.2	8.6	8.6
9-10 PM	434	0.0	372	7.0	1500	434	0	372	0.46	0	65.6	57.3	43.8	10.2	10.2
10-11 PM	298	0.0	256	7.0	1500	298	0	256	0.45	0	65.8	57.7	44.3	14.0	14.0
11PM-MID	217	0.0	187	7.0	1500	217	0	187	0.44	0	66.0	57.9	44.6	16.3	16.3

+ INDICATES DIVERSION FLOW EXCEEDS USER-SPECIFIED WARNING LIMIT

*----- SITE BREAKDOWN DELAYS -----*	
BREAKDOWN DURATION (MINS)	0
RANGE OF QUEUE DELAY - MIN (VEH-H) MAX	0.0
RANGE OF DIVN DELAY - MIN (VEH-H) MAX	0.0
AV BREAKDOWNS PER DAY	0.00
AV QUEUE DELAY/DAY (VEH-H)	0.0
AV DIVN DELAY/DAY (VEH-H)	0.0
AV TOTAL DELAY/DAY (VEH-H)	0.0

*----- SITE ACCIDENT DELAYS -----*	
ACCIDENT DURATION (MINS)	0
RANGE OF QUEUE DELAY - MIN (VEH-H) MAX	0.0
RANGE OF DIVN DELAY - MIN (VEH-H) MAX	0.0
AV ACCIDENTS PER DAY	0.00
AV QUEUE DELAY/DAY (VEH-H)	0.0
AV DIVN DELAY/DAY (VEH-H)	0.0
AV TOTAL DELAY/DAY (VEH-H)	0.0

AVERAGE ACCIDENT NUMBERS (PIA/DAY)	
MAIN ROUTE WITHOUT WORKS	0.0083
MAIN ROUTE WITH WORKS	0.0073
DIVERSION	0.1412

PIA: Personal Injury Accidents

IMPACTS ON ROAD USERS	
ROAD USER COSTS PER DAY ( DOLLARS)	\$2,031
CONGESTED HOURS PER DAY*	0

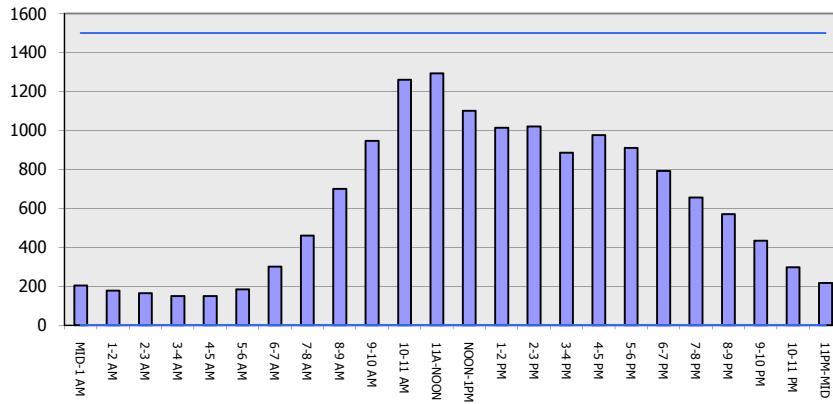
\*Delays Exceeding 15 Minutes

**IH 90: USH 14/61 TO USH 53  
 CONTINUOUS (24 HOUR) CLOSURE  
 DIVERSION ROUTE: USH 53 TO USH 14/61**

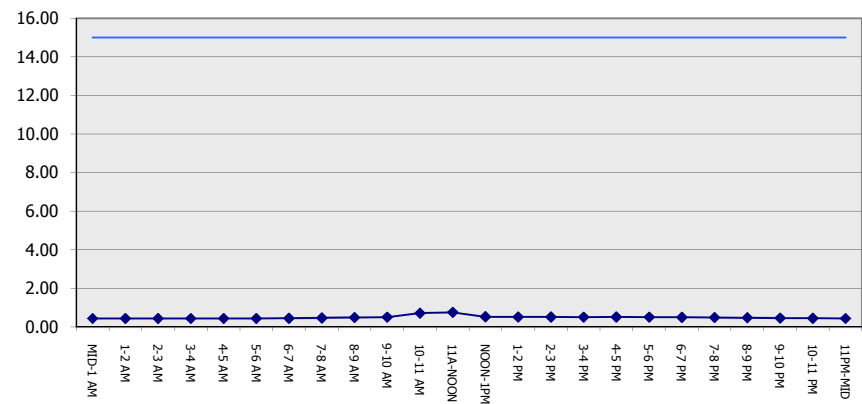
**OCTOBER**  
 Analyzed for 2009  
 Construction Season

**GRAPHICAL REPRESENTATION OF TRAFFIC MODEL INPUT AND OUTPUT**  
**SATURDAY WESTBOUND DIRECTION**

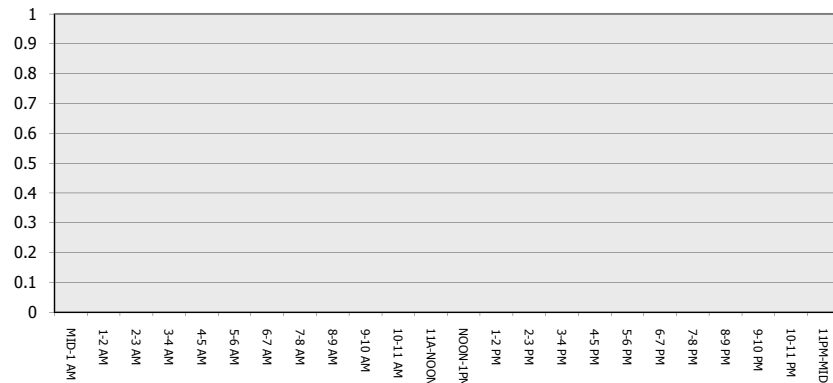
**Main Route - Traffic Demand (Vehicles Per Hour)**



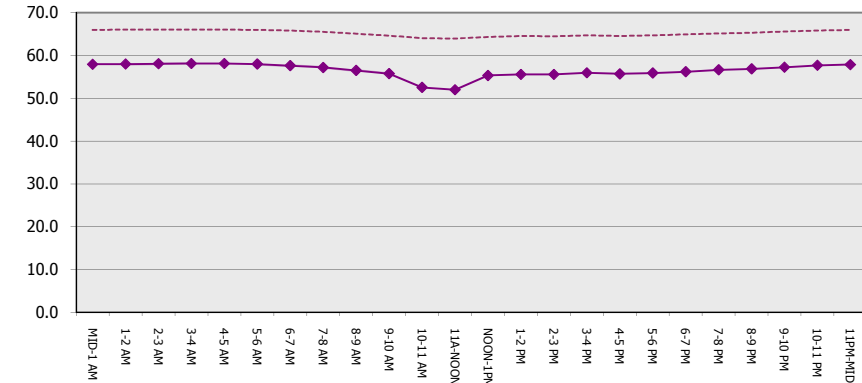
**Main Route Average Delay Per Vehicle (Minutes)**



**Main Route - Average Queue Length (Vehicles)**



**Main Route - Average Speed (MPH)**



<b>IH 90: USH 14/61 TO USH 53</b> <b>CONTINUOUS (24 HOUR) CLOSURE</b> <b>DIVERSION ROUTE: USH 53 TO USH 14/61</b>	<b>OCTOBER</b>
	Analyzed for 2009 Construction Season

**SUMMARY OF TRAFFIC MODEL OUTPUT**

SATURDAY EASTBOUND DIRECTION

TIME OF DAY	FLOWS AND CAPACITY IN VEH/HR								AVERAGE SPEEDS IN MPH						
	MAIN		DIVERSION		SITE CAPA CITY	FLOW MAIN ROUTE	FLOW DIVER -TING	TOTAL DIVN FLOW	AV.DEL PER VEH (MINS)	AVERAGE QUEUE (VEH)	MAIN ROUTE		SITE	ALTERNATE ROUTE	
	DEMAND FLOW	PCT HEAVY	NORMAL FLOW	PCT HEAVY							WITHOUT WORK ZN	WITH WORK ZN		WITHOUT WORK ZN	WITH WORK ZN
MID-1 AM	179	0.0	153	7.0	1500	179	0	153	0.44	0	66.1	58.0	44.8	17.4	17.4
1-2 AM	134	0.0	115	7.0	1500	134	0	115	0.44	0	66.1	58.1	45.0	18.6	18.6
2-3 AM	126	0.0	108	7.0	1500	126	0	108	0.43	0	66.1	58.2	45.0	18.9	18.9
3-4 AM	143	0.0	123	7.0	1500	143	0	123	0.44	0	66.1	58.1	44.9	18.4	18.4
4-5 AM	160	0.0	138	7.0	1500	160	0	138	0.44	0	66.1	58.1	44.8	17.9	17.9
5-6 AM	209	0.0	180	7.0	1500	209	0	180	0.44	0	66.0	57.9	44.6	16.5	16.5
6-7 AM	334	0.0	287	7.0	1500	334	0	287	0.45	0	65.8	57.6	44.2	13.0	13.0
7-8 AM	672	0.0	577	7.0	1500	672	0	577	0.49	0	65.1	56.6	42.8	7.9	7.9
8-9 AM	806	0.0	692	7.0	1500	806	0	692	0.50	0	64.9	56.2	42.4	7.1	7.1
9-10 AM	984	0.0	845	7.0	1500	984	0	845+	0.52	0	64.5	55.7	41.7	5.8	5.8
10-11 AM	1069	0.0	918	7.0	1500	1069	0	918+	0.53	0	64.4	55.5	41.4	5.6	5.6
11A-NOON	1030	0.0	884	7.0	1500	1030	0	884+	0.52	0	64.5	55.6	41.5	5.6	5.6
NOON-1PM	1038	0.0	891	7.0	1500	1038	0	891+	0.52	0	64.5	55.5	41.5	5.6	5.6
1-2 PM	1068	0.0	917	7.0	1500	1068	0	917+	0.53	0	64.4	55.5	41.4	5.6	5.6
2-3 PM	977	0.0	839	7.0	1500	977	0	839+	0.52	0	64.6	55.7	41.7	5.9	5.9
3-4 PM	1002	0.0	860	7.0	1500	1002	0	860+	0.52	0	64.5	55.6	41.7	5.7	5.7
4-5 PM	994	0.0	854	7.0	1500	994	0	854+	0.52	0	64.5	55.6	41.7	5.8	5.8
5-6 PM	921	0.0	790	7.0	1500	921	0	790+	0.51	0	64.6	55.9	42.0	6.3	6.3
6-7 PM	747	0.0	641	7.0	1500	747	0	641	0.49	0	65.0	56.3	42.6	7.5	7.5
7-8 PM	676	0.0	579	7.0	1500	676	0	579	0.49	0	65.1	56.6	42.8	7.9	7.9
8-9 PM	553	0.0	475	7.0	1500	553	0	475	0.48	0	65.3	56.9	43.3	8.8	8.8
9-10 PM	429	0.0	368	7.0	1500	429	0	368	0.46	0	65.6	57.3	43.8	10.4	10.4
10-11 PM	327	0.0	281	7.0	1500	327	0	281	0.45	0	65.8	57.6	44.2	13.2	13.2
11PM-MID	229	0.0	197	7.0	1500	229	0	197	0.44	0	66.0	57.9	44.6	16.0	16.0

+ INDICATES DIVERSION FLOW EXCEEDS USER-SPECIFIED WARNING LIMIT

*----- SITE BREAKDOWN DELAYS -----*	
BREAKDOWN DURATION (MINS)	0
RANGE OF QUEUE DELAY - MIN	0.0
(VEH-H) MAX	0.0
RANGE OF DIVN DELAY - MIN	0.0
(VEH-H) MAX	0.0
AV BREAKDOWNS PER DAY	0.00
AV QUEUE DELAY/DAY (VEH-H)	0.0
AV DIVN DELAY/DAY (VEH-H)	0.0
AV TOTAL DELAY/DAY (VEH-H)	0.0

*----- SITE ACCIDENT DELAYS -----*	
ACCIDENT DURATION (MINS)	0
RANGE OF QUEUE DELAY - MIN	0.0
(VEH-H) MAX	0.0
RANGE OF DIVN DELAY - MIN	0.0
(VEH-H) MAX	0.0
AV ACCIDENTS PER DAY	0.00
AV QUEUE DELAY/DAY (VEH-H)	0.0
AV DIVN DELAY/DAY (VEH-H)	0.0
AV TOTAL DELAY/DAY (VEH-H)	0.0

AVERAGE ACCIDENT NUMBERS (PIA/DAY)	
MAIN ROUTE WITHOUT WORKS	0.0082
MAIN ROUTE WITH WORKS	0.0073
DIVERSION	0.1406

PIA: Personal Injury Accidents

IMPACTS ON ROAD USERS	
ROAD USER COSTS PER DAY ( DOLLARS)	\$1,888
CONGESTED HOURS PER DAY*	0

\*Delays Exceeding 15 Minutes

**IH 90: USH 14/61 TO USH 53  
 CONTINUOUS (24 HOUR) CLOSURE  
 DIVERSION ROUTE: USH 53 TO USH 14/61**

**OCTOBER**  
 Analyzed for 2009  
 Construction Season

**GRAPHICAL REPRESENTATION OF TRAFFIC MODEL INPUT AND OUTPUT**  
**SATURDAY EASTBOUND DIRECTION**

