

<b>IH 90: USH 14/61 TO USH 53</b> <b>CONTINUOUS (24 HOUR) CLOSURE</b> <b>DIVERSION ROUTE: USH 53 TO USH 14/61</b>	<b>OCTOBER</b>
	Analyzed for 2009 Construction Season

**SUMMARY OF TRAFFIC MODEL OUTPUT**

MON-THUR                      WESTBOUND DIRECTION

TIME OF DAY	FLOWS AND CAPACITY IN VEH/HR								AVERAGE SPEEDS IN MPH						
	MAIN ROUTE		ALTERNATE ROUTE		SITE CAPA CITY	FLOW MAIN ROUTE	FLOW DIVER -TING	TOTAL DIVN FLOW	AV.DEL PER VEH (MINS)	AVERAGE QUEUE (VEH)	MAIN ROUTE		ALTERNATE ROUTE		
	DEMAND FLOW	PCT HEAVY	NORMAL FLOW	PCT HEAVY							WITHOUT WORK ZN	WITH WORK ZN	SITE	WITHOUT WORK ZN	WITH WORK ZN
MID-1 AM	178	0.0	153	7.0	1500	178	0	153	0.44	0	66.1	58.0	44.8	17.4	17.4
1-2 AM	154	0.0	132	7.0	1500	154	0	132	0.44	0	66.1	58.1	44.9	18.1	18.1
2-3 AM	150	0.0	129	7.0	1500	150	0	129	0.44	0	66.1	58.1	44.9	18.1	18.1
3-4 AM	147	0.0	126	7.0	1500	147	0	126	0.44	0	66.1	58.1	44.9	18.3	18.3
4-5 AM	197	0.0	169	7.0	1500	197	0	169	0.44	0	66.0	57.9	44.7	16.8	16.8
5-6 AM	325	0.0	279	7.0	1500	325	0	279	0.45	0	65.8	57.6	44.2	13.3	13.3
6-7 AM	519	0.0	446	7.0	1500	519	0	446	0.47	0	65.4	57.0	43.4	8.9	8.9
7-8 AM	715	0.0	614	7.0	1500	715	0	614	0.49	0	65.1	56.4	42.7	7.6	7.6
8-9 AM	840	0.0	721	7.0	1500	840	0	721+	0.50	0	64.8	56.1	42.2	6.8	6.8
9-10 AM	880	0.0	756	7.0	1500	880	0	756+	0.51	0	64.8	56.0	42.1	6.6	6.6
10-11 AM	857	0.0	737	7.0	1500	857	0	737+	0.51	0	64.8	56.0	42.2	6.7	6.7
11A-NOON	887	0.0	761	7.0	1500	887	0	761+	0.51	0	64.7	56.0	42.1	6.5	6.5
NOON-1PM	905	0.0	777	7.0	1500	905	0	777+	0.51	0	64.7	55.9	42.0	6.4	6.4
1-2 PM	959	0.0	823	7.0	1500	959	0	823+	0.52	0	64.6	55.8	41.8	6.0	6.0
2-3 PM	1067	0.0	916	7.0	1500	1067	0	916+	0.53	0	64.4	55.5	41.4	5.6	5.6
3-4 PM	1122	0.0	963	7.0	1500	1122	0	963+	0.54	0	64.3	55.2	41.1	5.6	5.6
4-5 PM	1230	0.0	1056	7.0	1500	1230	0	1056+	0.68	0	64.1	53.2	37.5	5.6	5.6
5-6 PM	1007	0.0	865	7.0	1500	1007	0	865+	0.52	0	64.5	55.6	41.7	5.7	5.7
6-7 PM	813	0.0	698	7.0	1500	813	0	698	0.50	0	64.9	56.1	42.4	7.0	7.0
7-8 PM	611	0.0	524	7.0	1500	611	0	524	0.48	0	65.3	56.8	43.1	8.3	8.3
8-9 PM	479	0.0	412	7.0	1500	479	0	412	0.47	0	65.5	57.1	43.6	9.3	9.3
9-10 PM	385	0.0	331	7.0	1500	385	0	331	0.46	0	65.6	57.4	44.0	11.6	11.6
10-11 PM	302	0.0	260	7.0	1500	302	0	260	0.45	0	65.8	57.6	44.3	13.9	13.9
11PM-MID	236	0.0	203	7.0	1500	236	0	203	0.45	0	66.0	57.8	44.5	15.7	15.7

+ INDICATES DIVERSION FLOW EXCEEDS USER-SPECIFIED WARNING LIMIT

*----- SITE BREAKDOWN DELAYS -----*	
BREAKDOWN DURATION (MINS)	0
RANGE OF QUEUE DELAY - MIN (VEH-H) MAX	0.0
RANGE OF DIVN DELAY - MIN (VEH-H) MAX	0.0
AV BREAKDOWNS PER DAY	0.00
AV QUEUE DELAY/DAY (VEH-H)	0.0
AV DIVN DELAY/DAY (VEH-H)	0.0
AV TOTAL DELAY/DAY (VEH-H)	0.0

*----- SITE ACCIDENT DELAYS -----*	
ACCIDENT DURATION (MINS)	0
RANGE OF QUEUE DELAY - MIN (VEH-H) MAX	0.0
RANGE OF DIVN DELAY - MIN (VEH-H) MAX	0.0
AV ACCIDENTS PER DAY	0.00
AV QUEUE DELAY/DAY (VEH-H)	0.0
AV DIVN DELAY/DAY (VEH-H)	0.0
AV TOTAL DELAY/DAY (VEH-H)	0.0

AVERAGE ACCIDENT NUMBERS (PIA/DAY)	
MAIN ROUTE WITHOUT WORKS	0.0083
MAIN ROUTE WITH WORKS	0.0073
DIVERSION	0.1421

PIA: Personal Injury Accidents

IMPACTS ON ROAD USERS	
ROAD USER COSTS PER DAY ( DOLLARS)	\$1,543
CONGESTED HOURS PER DAY*	0

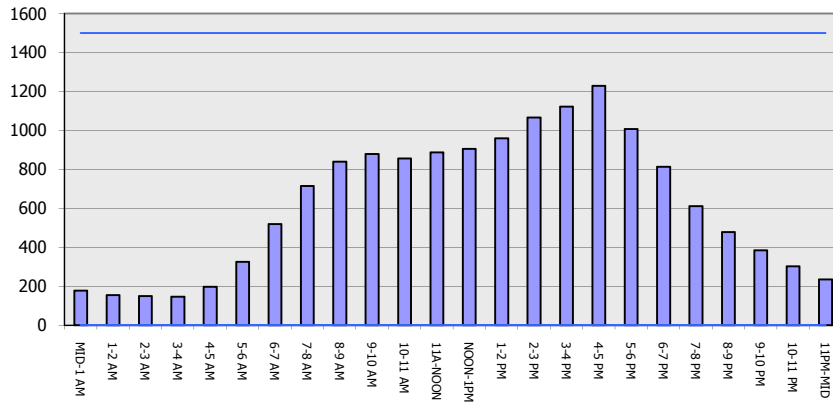
\*Delays Exceeding 15 Minutes

**IH 90: USH 14/61 TO USH 53  
 CONTINUOUS (24 HOUR) CLOSURE  
 DIVERSION ROUTE: USH 53 TO USH 14/61**

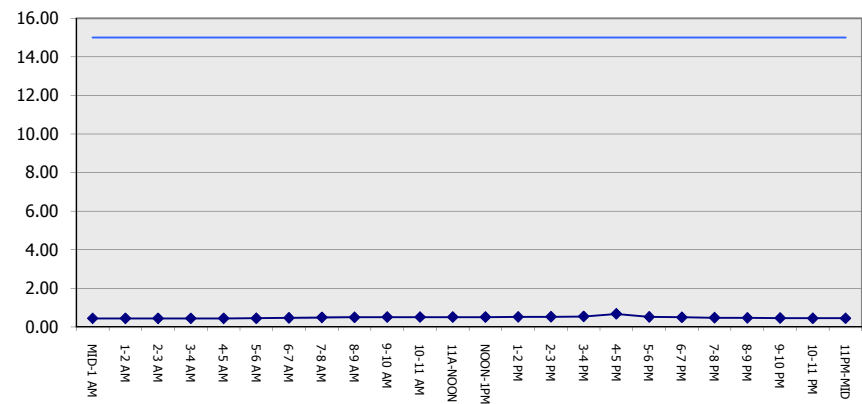
**OCTOBER**  
 Analyzed for 2009  
 Construction Season

**GRAPHICAL REPRESENTATION OF TRAFFIC MODEL INPUT AND OUTPUT**  
**MON-THUR WESTBOUND DIRECTION**

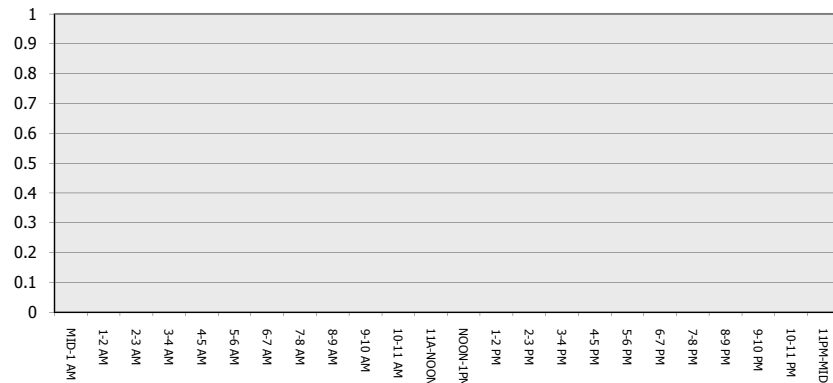
**Main Route - Traffic Demand (Vehicles Per Hour)**



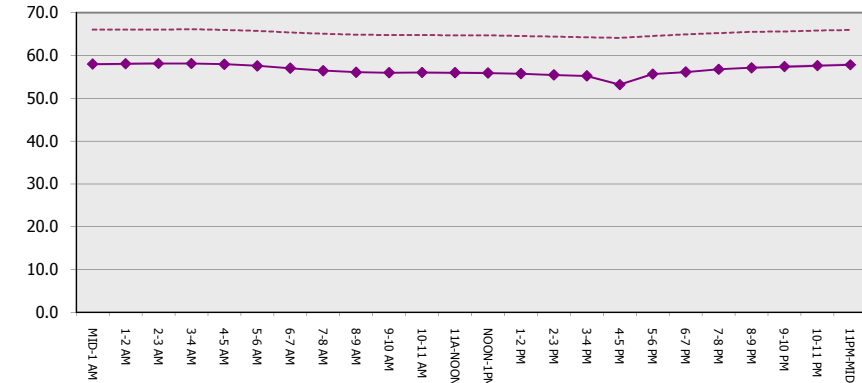
**Main Route Average Delay Per Vehicle (Minutes)**



**Main Route - Average Queue Length (Vehicles)**



**Main Route - Average Speed (MPH)**



<b>IH 90: USH 14/61 TO USH 53</b> <b>CONTINUOUS (24 HOUR) CLOSURE</b> <b>DIVERSION ROUTE: USH 53 TO USH 14/61</b>	<b>OCTOBER</b>
	Analyzed for 2009 Construction Season

**SUMMARY OF TRAFFIC MODEL OUTPUT**

MON-THUR EASTBOUND DIRECTION

TIME OF DAY	FLOWS AND CAPACITY IN VEH/HR								AVERAGE SPEEDS IN MPH						
	MAIN		DIVERSION		SITE CAPA CITY	FLOW MAIN ROUTE	FLOW DIVER -TING	TOTAL DIVN FLOW	AV.DEL PER VEH (MINS)	AVERAGE QUEUE (VEH)	MAIN ROUTE		SITE	ALTERNATE ROUTE	
	DEMAND FLOW	PCT HEAVY	NORMAL FLOW	PCT HEAVY							WITHOUT WORK ZN	WITH WORK ZN		WITHOUT WORK ZN	WITH WORK ZN
MID-1 AM	145	0.0	124	7.0	1500	145	0	124	0.44	0	66.1	58.1	44.9	18.3	18.3
1-2 AM	127	0.0	110	7.0	1500	127	0	110	0.43	0	66.1	58.2	45.0	18.8	18.8
2-3 AM	141	0.0	122	7.0	1500	141	0	122	0.44	0	66.1	58.1	44.9	18.4	18.4
3-4 AM	187	0.0	160	7.0	1500	187	0	160	0.44	0	66.0	58.0	44.7	17.1	17.1
4-5 AM	253	0.0	217	7.0	1500	253	0	217	0.45	0	65.9	57.8	44.5	15.3	15.3
5-6 AM	391	0.0	336	7.0	1500	391	0	336	0.46	0	65.6	57.4	43.9	11.4	11.4
6-7 AM	657	0.0	564	7.0	1500	657	0	564	0.49	0	65.1	56.6	42.9	8.0	8.0
7-8 AM	845	0.0	725	7.0	1500	845	0	725+	0.50	0	64.8	56.1	42.2	6.8	6.8
8-9 AM	753	0.0	646	7.0	1500	753	0	646	0.50	0	65.0	56.3	42.5	7.4	7.4
9-10 AM	808	0.0	693	7.0	1500	808	0	693	0.50	0	64.9	56.2	42.4	7.0	7.0
10-11 AM	845	0.0	725	7.0	1500	845	0	725+	0.50	0	64.8	56.1	42.2	6.8	6.8
11A-NOON	845	0.0	725	7.0	1500	845	0	725+	0.50	0	64.8	56.1	42.2	6.8	6.8
NOON-1PM	889	0.0	763	7.0	1500	889	0	763+	0.51	0	64.7	56.0	42.0	6.5	6.5
1-2 PM	986	0.0	847	7.0	1500	986	0	847+	0.52	0	64.5	55.7	41.7	5.8	5.8
2-3 PM	1063	0.0	913	7.0	1500	1063	0	913+	0.53	0	64.4	55.5	41.5	5.6	5.6
3-4 PM	1079	0.0	925	7.0	1500	1079	0	925+	0.53	0	64.4	55.4	41.4	5.6	5.6
4-5 PM	1116	0.0	958	7.0	1500	1116	0	958+	0.53	0	64.3	55.3	41.3	5.6	5.6
5-6 PM	982	0.0	843	7.0	1500	982	0	843+	0.52	0	64.6	55.7	41.7	5.9	5.9
6-7 PM	760	0.0	652	7.0	1500	760	0	652	0.50	0	65.0	56.3	42.5	7.3	7.3
7-8 PM	587	0.0	504	7.0	1500	587	0	504	0.48	0	65.3	56.8	43.2	8.5	8.5
8-9 PM	481	0.0	413	7.0	1500	481	0	413	0.47	0	65.5	57.1	43.6	9.2	9.2
9-10 PM	409	0.0	351	7.0	1500	409	0	351	0.46	0	65.6	57.3	43.8	10.9	10.9
10-11 PM	305	0.0	262	7.0	1500	305	0	262	0.45	0	65.8	57.6	44.3	13.8	13.8
11PM-MID	234	0.0	202	7.0	1500	234	0	202	0.45	0	66.0	57.9	44.5	15.8	15.8

+ INDICATES DIVERSION FLOW EXCEEDS USER-SPECIFIED WARNING LIMIT

*----- SITE BREAKDOWN DELAYS -----*	
BREAKDOWN DURATION (MINS)	0
RANGE OF QUEUE DELAY - MIN	0.0
(VEH-H) MAX	0.0
RANGE OF DIVN DELAY - MIN	0.0
(VEH-H) MAX	0.0
AV BREAKDOWNS PER DAY	0.00
AV QUEUE DELAY/DAY (VEH-H)	0.0
AV DIVN DELAY/DAY (VEH-H)	0.0
AV TOTAL DELAY/DAY (VEH-H)	0.0

*----- SITE ACCIDENT DELAYS -----*	
ACCIDENT DURATION (MINS)	0
RANGE OF QUEUE DELAY - MIN	0.0
(VEH-H) MAX	0.0
RANGE OF DIVN DELAY - MIN	0.0
(VEH-H) MAX	0.0
AV ACCIDENTS PER DAY	0.00
AV QUEUE DELAY/DAY (VEH-H)	0.0
AV DIVN DELAY/DAY (VEH-H)	0.0
AV TOTAL DELAY/DAY (VEH-H)	0.0

AVERAGE ACCIDENT NUMBERS (PIA/DAY)	
MAIN ROUTE WITHOUT WORKS	0.0083
MAIN ROUTE WITH WORKS	0.0073
DIVERSION	0.1413

PIA: Personal Injury Accidents

IMPACTS ON ROAD USERS	
ROAD USER COSTS PER DAY ( DOLLARS)	\$1,493
CONGESTED HOURS PER DAY*	0

\*Delays Exceeding 15 Minutes

**IH 90: USH 14/61 TO USH 53  
 CONTINUOUS (24 HOUR) CLOSURE  
 DIVERSION ROUTE: USH 53 TO USH 14/61**

**OCTOBER**  
 Analyzed for 2009  
 Construction Season

**GRAPHICAL REPRESENTATION OF TRAFFIC MODEL INPUT AND OUTPUT**  
**MON-THUR EASTBOUND DIRECTION**

